

Bluetooth Headset User Manual

Model: BlueTone™ BTHS106

Declaration:

Without written permission from original manufacturer, reproduction, transfer, distribution or storage of part or all of the contents in this document in any form is prohibited.

The company reserves rights to make any changes and improvements to the product described in this document without prior notice.

Notice :

Please make sure your mobile phone supports bluetooth profiles and network operator supports the functions described in this manual, otherwise the relative functions can not be realized on this Headset device.

Certification and Safety Approvals

This product has been tested and found to comply with Bluetooth BQB requirements, part 15 of FCC rules, R&TTE Directive (99/5/EC) or CE marked requirements.

Warning: Users should not make changes or modify the device in any way. Changes or modifications without expressly approved by the party responsible for compliance could void the user's authority to operate the device.

Safety

- Use the charger that comes with package.
- Check the laws and regulations on the use of mobile phones and headset equipment in the areas where you drive. Always give full attention to driving, pull off the road and park before making or answering a call if driving conditions require.
- Do not allow children to play with your Bluetooth headset since it contains small parts that could become detached and create a choking hazard
- This device contains a Li-polymer battery. Please keep it away from fire anytime (including discarding the device) or the battery may explode
- The headset, especially the embedded battery must be properly disposed or may be recycled, contact your local recycling centers for disposal methods.

Certification and Safety Approvals

This product has been tested and found to comply with part 15 of FCC rules, R&TTE Directive (99/5/EC) or CE marked requirements.

Warning: Users should not make changes or modify the device in any way. Changes or modifications without expressly approved by the party responsible for compliance could void the user's authority to operate the device.

This device complies with part 15 of the FCC Rules. Operation is subject to the following two conditions: (1) This device may not cause harmful interference, and (2) this device must accept any interference received, including interference that may cause undesired operation.

FEDERAL COMMUNICATIONS COMMISSION INTERFERENCE STATEMENT

This equipment has been tested and found to comply with the limits for a Class B digital device, pursuant to part 15 of the FCC Rules. These limits are designed to provide reasonable protection against harmful interference in a residential installation. This equipment generates, uses and can radiate radio frequency energy and, if not installed and used in accordance with the instructions, may cause harmful interference to radio communications. However, there is no guarantee that interference will not occur in a particular installation. If this equipment does cause harmful interference to radio or television reception, which can be determined by turning the equipment off and on, the user is encouraged to try to correct the interference by one or more of the following measures:

- Reorient or relocate the receiving antenna.
- Increase the separation between the equipment and receiver.
- Connect the equipment into an outlet on a circuit different from that to which the receiver is connected.
- Consult the dealer or an experienced radio/ TV technician for help.

CAUTION:

Any changes or modifications not expressly approved by the grantee of this device could void the user's authority to operate the equipment.

RF exposure warning ·

The equipment complies with FCC RF exposure limits set forth for an uncontrolled environment.

The equipment must not be co-located or operating in conjunction with any other antenna or transmitter.

1. INTRODUCTION	5
1.1 BLUETOOTH TECHNOLOGY	5
1.2 PRODUCT FEATURES	5
1.3 PACKAGE CONTENT	5
1.4 OVERVIEW	6
1.5 KEY PRESS DURATION DEFINITIONS	6
2. USING YOUR HEADSET.....	7
2.1 BATTERY CHARGING AND USAGE	7
2.1.1 Battery Charging	7
2.1.2 Battery Information	7
2.2 WEARING YOUR HEADSET.....	7
2.3 TURN ON/OFF HEADSET	8
2.4 PAIRING/CONNECTING YOUR HEADSET WITH BLUETOOTH EQUIPMENT.....	8
2.4.1 Pairing your Headset with Bluetooth Handset.....	8
2.4.2 Pairing your Headset with Other Bluetooth Equipment	9
2.4.3 Quit pairing with Bluetooth Equipment.....	9
2.4.4 Connecting/Disconnecting your Headset with Bluetooth Equipment.....	9
2.5 CALL FUNCTIONS	9
2.5.1 Call	9
2.5.2 Adjusting Headset Volume	10
2.5.3 Mute.....	10
2.5.4 Transferring Calls to/from Your Handset.....	10
2.5.5 Voice Dialing.....	10
2.5.6 Advanced Call Functions.....	10
3. QUICK USER GUIDE.....	11
4. IMPORTANT MESSAGES AND FREQUENTLY ASKED QUESTIONS.....	14
5. MAINTENANCE	15

1. Introduction

1.1 Bluetooth Technology

Bluetooth is an internationally standardized technology supporting short distance wireless communications. Any two Bluetooth-compatible equipments, such as mobile phone, PDA, PC, headset, mouse, keyboard, printer, etc. can wirelessly communicate with each other via Bluetooth connection. To ensure worldwide compatibility, Bluetooth operates on the globally available ISM (Industrial Scientific and Medical) frequency band. Within 2.4 GHz and 2.48 GHz, Bluetooth transmits data up to either 10 meters (CLASS II mode) or 100 meters (CLASS I mode) using 79 frequency hopping channels.

Though line-of-sight is not required, Bluetooth connections could subject to interferences from obstructions such as walls, human bodies, and other electronic devices. In addition, due to variations on product implementation, it is likely that Bluetooth equipments from different manufactures have interoperability issues. In that case, you may consult with manufactures to check product compatibility.

Note that, there could be some restrictions imposing on using Bluetooth devices in some countries. Please check with your local authorities.

1.2 Product Features

- Bluetooth v 1.2 compliant, interference-tolerable with WLAN devices
- Class II, operating range up to 10 meters
- Data rate up to 723 Kbps
- Compatible with all Bluetooth-enabled devices, such as cellular phone, PDA, and notebook
- Crystal clear voice quality without echoes
- Voice security ensured by using 128-bit encryption
- Support Voice Chat via an Online Messenger or VoIP software
- Low power consumption, up to 7 hours talking time and 300 hours standby time
- Stable, accurate and sensible search of devices in range
- Rechargeable Li-ion polymer battery
- Portable, stylish, lightweight, and mini-sized design
- Removable Ear-Hook fit either ear

1.3 Package Content

- | | |
|---------------------------------|---|
| ● BlueTone™ BTHS106 | 1 |
| ● Removable ear hook | 1 |
| ● 100-240V AC/DC travel charger | 1 |
| ● User Manual | 1 |

1.4 Overview



Figure 1 Headset Overview

1. **Charging Port:** for connecting to the travel (or car) charger to charge headset battery
2. **Button K1:** for turning on/off headset, pairing headset and receive/reject call
3. **Button K2:** for adjusting earphone volume up
4. **Button K3:** for adjusting earphone volume down
5. **Removable Ear hook:** for wearing the headset more comfortable and firmly
6. **Red/Blue LED Indicator:** for indicating headset status
7. **Earphone:** for playing caller's voice

1.5 Key Press Duration Definitions

- Short press (SP): press and release a button quickly.
- Long press (LP): press and hold a button for at least 3 seconds, then release.
- Very long press (VP): press and hold a button for at least 6 seconds, then release.

2. Using Your Headset

2.1 Battery Charging and Usage

2.1.1 Battery Charging

This device contains a rechargeable Li-Polymer battery. First-time charging time is about 4 hours. Later-on recharging time is around 2-3 hours. Detailed charging procedures as follows:

1. Connect the travel charger to the power outlet.
2. Referring to Figure 2, plug the mini USB connector of the charger to headset's charging port to start charging. Both the Red and Blue LEDs will be on during charging. Once the Red LED turns off, the battery is fully charged and you should disconnect the charger from the headset and the power outlet.

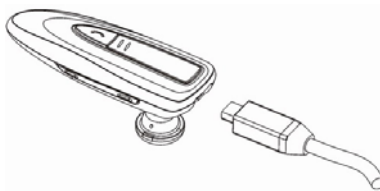


Figure 2 Battery Charging

2.1.2 Battery Information

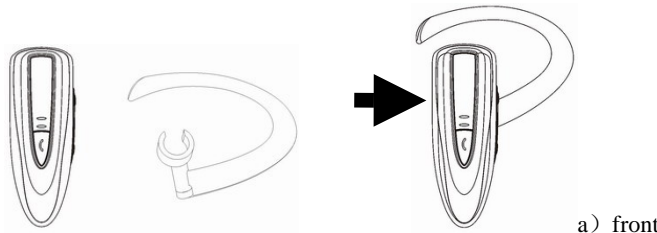
1. Once fully charged, the battery supports continuous talk time up to 7 hours and standby (i.e. the device is power on but no call in progress) time about 300 hours
2. When the battery is low, the headset beeps once every 20 seconds and the Red LED blinks once every 3 seconds, charge the battery as described above

Note that, over-charging will reduce battery life. If a fully charged battery is left unused, it will lose power over time. Extreme temperature (either too hot or too cold) will also affect its ability to charge, capacity, and life time.

2.2 Wearing your Headset

This device comes with a removable ear-hook and a necklace hook. You can:

1. Directly wear the headset over either your left or right ear
2. Properly installed the ear hook and then wear the headset over either your left or right ear (see Figure 3 below)



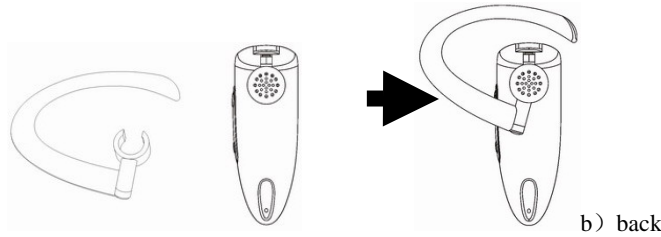


Figure 3: How to Use Ear Hook

Note: To get the best performance, you need to wear your headset and Bluetooth phone on the same side of your body and ensure there are no obstructions (including parts of your body) between them.

2.3 Turn On/Off Headset

Turn on the Headset: Long press K1, you will hear 2 high tones, and Blue LED gives 5 quick blinks following by 1 blink per 3 seconds. Red LED is off. This indicates the headset is power on.

Turn off the Headset: Long press K1, you will hear 2 low tones, and Red LED gives 5 quick blinks and then turns off. This indicates the headset is power off.

2.4 Pairing/Connecting your Headset with Bluetooth Equipment

2.4.1 Pairing your Headset with Bluetooth Handset

Before making and answering calls, you must pair your headset and phone. Pairing sets up a unique relationship between your headset and your handset. The handset will memorize the headset's unique ID (or passkey). This ensures that a unique and encrypted wireless link between your headset and handset will be used during calls.

Detailed operation procedures are as follows:

1. Place your headset close to your Bluetooth handset, ensure your headset is power off and your handset is power on
2. Press and hold K1 for at least 6 seconds until the Blue and Red LEDs flash alternatively. You will hear 2 high tone follows by 1 high tone to indicate that the headset has successfully entered the pairing mode
3. Following your phone user guide to active Bluetooth device search on the phone side, on your phone screen you will see a list of Bluetooth equipments found by the phone at the end of the searching process.
4. Select this Bluetooth headset "BTHS106" from the list and initiate pairing following handset's on-screen prompts.
5. Continue to follow on-screen prompts to enter passkey "0000" and confirm to pair the headset with your handset. Your headset ID is now stored in the handset's memory. When Blue LED either blinks 3 times every 3 seconds (with connection) or blinks once every 3 seconds (no connection), it indicates pairing is completed.

Note:

1. If pairing is successful, headset's Red LED is off. The Blue LED gives 3 quick blinks per 2 seconds. If pairing is failed, the Blue and Red LEDs alternate continuously (for about 2 minutes). You need to go back to above steps 3-5 to repeat the pairing process.

2. *Your headset will remain in the pairing mode for about 2 minutes. If pairing cannot be finished within 2 minutes, the headset will enter into the standby mode (without Bluetooth connection in this case). You need to repeat the above steps 2-5 to restart the pairing process.*

2.4.2 Pairing your Headset with Other Bluetooth Equipment

In addition to Bluetooth phone, your headset can also pair with other Bluetooth equipment for realizing short distance wireless communications. Similar pairing procedures described in the previous section 2.4.1 can be used. You can follow the user guide of the Bluetooth equipment to complete pairing operations on the equipment side.

This headset can be paired with up to 8 Bluetooth equipments (including mobile handsets). The corresponding 8 sets of pairing information are recorded in a table maintained by the headset. Each paired equipment can wirelessly communicate with the headset after setting up a Bluetooth connection. Please check section 2.4.4 on procedures to set up a Bluetooth connection.

2.4.3 Quit pairing with Bluetooth Equipment

When headset is in the pairing mode, short press K1, it will quit from pairing mode. At this time, Blue LED starts blinking once every 3 seconds.

2.4.4 Connecting/Disconnecting your Headset with Bluetooth Equipment

When the headset communicates with a Bluetooth equipment with Handsfree Profile, the Bluetooth connection between two equipments shall be established in advance. If two Bluetooth equipments have been paired recently, you can simply reconnect them.

Connecting your Headset with Bluetooth Handset:

Bluetooth connection can be set up by initiating request from the handset, detailed operations are as follows:

Place the headset close to the Bluetooth handset and then follow the handset user guide to find the headset and send connection request. If successful, Blue LED blinks 3 times every 3 seconds.

Disconnecting your Headset with Bluetooth Handset:

When headset is connected with Bluetooth handset, you can disconnect them as follows:

1. The Bluetooth connection could be unexpectedly dropped due to too far (>10m) distance or bad radio environment.
2. Refer to handset's manual to initiate the connection from the handset side.

After disconnecting, Blue LED blinks once every 3 seconds, Red LED is off.

2.5 Call Functions

2.5.1 Call

Before dialing, both your headset and handset must be powered on. And you also need to ensure your headset and handset have been linked with Bluetooth connection.

Answer Call: Short press K1.

Reject Call: Long press K1. You also can long or short press K2 and long or short press K3 to reject call.

End Call: Short press K1.

Redial: Long press K3.

2.5.2 Adjusting Headset Volume

In the talking mode, you can short press K2/K3 to increase/decrease your headset volume. You can repeat the above operation to headset volume to a desirable level.

2.5.3 Mute

You can mute or un-mute an ongoing call by long pressing K1 and K3 together. When you mute an ongoing call, you can hear 1 low tone every 20 seconds, and Blue LED gives 4 quick blinks per 3 seconds.

2.5.4 Transferring Calls to/from Your Handset

Transferring calls to your handset: Long press K1 and K2 together, Blue LED blinks once per 3 seconds.

Transferring calls from your handset: Long press K1 and K2 together, and Blue LED gives 4 quick blinks per 3 seconds.

2.5.5 Voice Dialing

If your mobile phone supports voice dialing, you can make a call via voice dialing from your headset:

Voice Dialing: Short press K1, you will hear key tone, and Blue LED gives 4 quick blinks per 3 seconds, Red LED is off, then follow your handset user guide to complete voice dialing.

Cancel Voice Dialing: Short press K1, you will hear key tone, and Blue LED gives 3 quick blinks per 3 seconds.

2.5.6 Advanced Call Functions

If your mobile phone has call waiting/conference functions, this Bluetooth Headset can support the function by following operations:

1. When you talk, at the same time a new call comes in:
 - 1) Very long press K2, to answer new call and hold active call.
 - 2) Very long press K3, to end active call and answer new call.
2. There are two calls in progress, one is active the other is hold:
 - 1) Very long press K2, to toggle hold call and active call.
 - 2) Very long press K3, to release active call and active hold call.
 - 3) Long press K2, to make conference.

3. Quick User Guide

You can follow the instructions listed in Table 1-6 below to operate your headset. (Please refer section 1.4 and 1.5 for details of key and key press duration definitions.)

Note: your handset can only talk to paired Bluetooth handsets. For handsets supporting HFP only, you also need to establish Bluetooth connection between your headset and your phone before making and answering calls.

Table 1: Power on/off

FUNCTION	CURRENT STATUS		OPERATION	HEADSET INDICATOR	
	HANDSET	HEADSET		AUDIO TONE	LED INDICATOR
Turn On		Power Off	Long press K1	2 high tones	Blue LED gives 5 quick blinks following by 1 blink per 3 seconds. Red LED is off.
Turn Off		Standby	Long press K1	2 low tones	Red LED gives 5 quick blinks and then turns off.

Table 2: Pairing/Connections

FUNCTION	CURRENT STATUS		OPERATION	HEADSET INDICATOR	
	HANDSET	HEADSET		AUDIO TONE	LED INDICATOR
Enter pairing mode		Power off	Very long press K1	2 high tone follows by 1 high tone	Red and Blue LEDs flash alternatively.
Quit from pairing mode		Pairing Mode	Short press K1	1 high tone	Stop alternative flashing. Blue LED starts blinking once every 3 seconds. Red LED is off.
Pair headset with handset	Power on	Pairing mode	Follows your handset user guide to complete pairing procedure. Passkey is "0000"		Stop alternative flashing, Blue LED either blinks 3 times every 3 seconds (with connection) or blinks once every 3 seconds (no connection). Red LED is off.
Connect (headset with handset)	Standby (disconnect-ed)	Standby (disconnect-ed)	Set up connection from the handset		If successful, Blue LED blinks 3 times every 3 seconds. Red LED is off.
Disconnect	Standby (connect)	Standby (connect)	Refer to handset's manual to initiate the disconnection from the handset side.		Blue LED blinks once every 3 seconds. Red LED is off.

Table 3: Call Functions

FUNCTION	CURRENT STATUS		OPERATION	HEADSET INDICATOR	
	HANDSET	HEADSET		AUDIO TONE	LED INDICATOR
Answer Call	Standby	Standby	Short press K1	Key Tone	Blue LED gives 4 quick blinks per 3 seconds. Red LED is off.
Reject Call	Standby	Standby	Long press K1 Long or Short press K3 Long or Short press K2	Key Tone	Blue LED blinks once per 3 seconds. Red LED is off.
End Call	Talk	Talk	Short press K1	Key Tone	Blue LED blinks once per 3 seconds. Red LED is off.
Redial	Standby	Standby	Long press K3	Key Tone	Blue LED gives 4 blinks per 3 seconds. Red LED is off.
Voice Dialing	Standby	Standby	Short press K1	Key Tone	Blue LED gives 4 quick blinks per 3 seconds. Red LED is off.
Cancel Voice Dialing	Voice Dialing	Voice Dialing	Short press K1	Key Tone	Blue LED gives 3 quick blinks per 3 seconds. Red LED is off.
Volume up	Talk	Talk	Short press K2		Blue LED gives 4 quick blinks per 3 seconds. Red LED is off.
Volume down	Talk	Talk	Short press K3		Blue LED gives 4 quick blinks per 3 seconds. Red LED is off.
Mute	Talk	Talk	Long press K1 and K3 Together	1 low tone every 20 seconds	Blue LED gives 4 quick blinks per 3 seconds. Red LED is off.
Unmute	Talk	Mute	Long press K1 and K3 Together		Blue LED gives 4 quick blinks per 3 seconds. Red LED is off.

Table 4: Transfer Functions

FUNCTION	CURRENT STATUS		OPERATION	HEADSET INDICATOR	
	HANDSET	HEADSET		AUDIO TONE	LED INDICATOR
Call Transfer (headset to handset)	Talk	Talk	Long press K1 and K2 together	Key Tone	Blue LED blinks once per 3 seconds. Red LED is off.
Call Transfer (handset to headset)	Talk	Talk	Long press K1 and K2 together	Key Tone	Blue LED gives 4 quick blinks per 3 seconds. Red LED is off.

Table 5: Low Power Indication

FUNCTION	CURRENT STATUS		OPERATION	HEADSET INDICATOR	
	HANDSET	HEADSET		AUDIO TONE	LED INDICATOR
Low Power Warning		Except power off		Beep every 20 seconds	Red LED blinks once every 3 seconds.

Table 6: Advanced Call Functions

FUNCTION	CURRENT STATUS		OPERATION	HEADSET INDICATOR	
	HANDSET	HEADSET		AUDIO TONE	LED INDICATOR
End Active Call Answer New Call	Talk	Conference Call	Very long press K3		Blue LED gives 4 quick blinks per 3 seconds. Red LED is off.
Toggle Held Call and Active Call	Talk	Conference Call	Very long press K2		Blue LED gives 4 quick blinks per 3 seconds. Red LED is off.
Answer New Call Hold Active Call	Talk	Conference Call	Very long press K2		Blue LED gives 4 quick blinks per 3 seconds. Red LED is off.
Release Call and Active Hold Call	Talk	Conference Call	Very long press K3		Blue LED gives 4 quick blinks per 3 seconds. Red LED is off.
Conference	Talk	Conference Call	Long press K2		Blue LED gives 4 quick blinks per 3 seconds. Red LED is off.

4. Important Messages and Frequently Asked Questions

1. Except handsets, what kind of devices can the headset communicate with:

Besides pairing with a handset for receiving and making phone calls, the headset can also communicate with PDA and computer that equipped with Bluetooth. For examples, when communicating with a computer (through a USB Dongle) users can chat and/or listen music over the internet.

2. Red LED blinking:

Low battery indicator; please recharge your battery as soon as possible.

3. Can't power up the device after charging more than 20 minutes:

For the first time, the device should be charged at least 40 minute prior tuning on, it is recommended that the battery should be fully charged before using the device.

4. Without charging indicator:

When the battery runs off or the headset has not been used for a while, the Red LED may take a while to light up after the charger connected.

5. Can't hear anything on headset: you should check the followings

- Headset is power on
- Headset has paired with a Bluetooth device
- Headset should connected with a Bluetooth device (except the handset only supports Headset Profile)
- Headset and Bluetooth device are within 10m
- Headset and Bluetooth device should have good single strength

6. Headset can not be found when a Bluetooth device tries to pair with it:

Your headset may not be in the pairing mode, please refer section 2.4.1 for details.

7. Do the paired headset or the paired Bluetooth device need to be repaired power off:

No. Please note that for the Bluetooth device supports handsfree profile, the headset and the handset must be connected first, refer section 2.4.4 for details.

8. Voice dialing does not work:

First check the handset supports voice dialing function; make sure you have recorded the voice tag. Please note that noisy environment will affect voice dialing.

9. Can't realize any functions

Connect the charger to the power outlet, plug the mini USB connector of the charger to headset's charging port to start charging for a few seconds. Then disconnect the charger from the headset and the power outlet, and turn on the headset to do anything which you want.

5. Maintenance

BlueTone™ BTHS106 is a well-designed communications device, careful maintenance and proper use will extend the product life and keep its elite performance in delivering voice. Following maintenance procedures may be helpful to you:

- Always turn off power and keep your headset in a safe place when it is not in use
- Keep the device dry, away from water, precipitation, humidity, moisture, and various liquids which may corrode electronic circuits. If your device gets wet, turn it off immediately and wait until the device gets dry completely before using it
- Keep the device away from dusty and dirty places. Otherwise, the mechanic and electronic parts could be damaged
- Do not store the device in high temperatures. Extreme high temperature could degrade performance, reduce battery lifetime, and warp or melt the certain plastics.
- Do not store the device in too cold place. Moisture could form inside the device when you take it to a warm place. This could damage the internal electronic circuits.
- Avoid dropping, knocking, and shaking the device. The mechanical parts and the internal electronic circuits could be broken.
- Avoid using harsh chemicals, cleaning solvents, and any other strong detergent to clean the device. You may use a clean and slightly damp cloth to clean the device
- Always take the device to the nearest authorized service facility for repairing if it is malfunctioning. Disassembling, modifying, and replacing components yourself could degrade product performance, cause damages, and terminate warranty