

SAR TEST REPORT

(Mobile)

REPORT NO.: SA980604L08

MODEL NO.: SC800 (refer to item 2.1 for more details)

RECEIVED: Jun. 07, 2009

TESTED: Jul. 28 ~ Jul. 29, 2009

ISSUED: Jul. 31, 2009

APPLICANT: Shin Chuan Computer Co., Ltd.

ADDRESS: 6F-2, 268, LianCheng Rd., ZhongHe City, Taipei
County 23553, Taiwan (R.O.C.)

ISSUED BY: Bureau Veritas Consumer Products Services (H.K.)
Ltd., Taoyuan Branch

LAB ADDRESS: No. 47, 14th Ling, Chia Pau Tsuen, Lin Kou Hsiang,
Taipei Hsien 244, Taiwan, R.O.C.

TEST LOCATION: No. 19, Hwa Ya 2nd Rd, Wen Hwa Tsuen, Kwei
Shan Hsiang, Taoyuan Hsien 333, Taiwan, R.O.C.

This test report consists of 47 pages in total except Appendix. It may be duplicated completely for legal use with the approval of the applicant. It should not be reproduced except in full, without the written approval of our laboratory. The client should not use it to claim product endorsement by TAF or any government agencies. The test results in the report only apply to the tested sample.



TABLE OF CONTENTS

1.	CERTIFICATION	3
2.	GENERAL INFORMATION.....	4
2.1	GENERAL DESCRIPTION OF EUT	4
2.2	GENERAL DESCRIPTION OF APPLIED STANDARDS	6
2.3	GENERAL INFORMATION OF THE SAR SYSTEM	7
2.4	GENERAL DESCRIPTION OF THE SPATIAL PEAK SAR EVALUATION	10
3.	DESCRIPTION OF SUPPORT UNITS	14
4.	DESCRIPTION OF TEST POSITION AND CONFIGURATIONS	15
4.1	DESCRIPTION OF ANTENNA LOCATION	15
4.2	DESCRIPTION OF ASSESSMENT POSITION	16
4.3	DESCRIPTION OF TEST POSITION.....	17
4.1.1	TOUCH/CHEEK TEST POSITION	18
4.1.2	TILT TEST POSITION	19
4.1.3	BODY-WORN CONFIGURATION	19
4.4	DESCRIPTION OF TEST MODE	20
4.5	SUMMARY OF TEST RESULTS	21
5.	TEST RESULTS	22
5.1	TEST PROCEDURES	22
5.2	MEASURED SAR RESULTS	24
5.3	SAR LIMITS.....	28
5.4	RECIPES FOR TISSUE SIMULATING LIQUIDS	29
5.5	TEST EQUIPMENT FOR TISSUE PROPERTY	34
6.	SYSTEM VALIDATION.....	35
6.1	TEST EQUIPMENT	35
6.2	TEST PROCEDURE	36
6.3	VALIDATION RESULTS	38
6.4	SYSTEM VALIDATION UNCERTAINTIES	39
7.	MEASUREMENT SAR PROCEDURE UNCERTAINTIES.....	40
7.1	PROBE CALIBRATION UNCERTAINTY	40
7.2	ISOTROPY UNCERTAINTY	41
7.3	BOUNDARY EFFECT UNCERTAINTY.....	41
7.4	PROBE LINEARITY UNCERTAINTY	42
7.5	READOUT ELECTRONICS UNCERTAINTY.....	42
7.6	RESPONSE TIME UNCERTAINTY	42
7.7	INTEGRATION TIME UNCERTAINTY.....	43
7.8	PROBE POSITIONER MECHANICAL TOLERANCE	44
7.9	PROBE POSITIONING	44
7.10	PHANTOM UNCERTAINTY	45
7.11	DASY4 UNCERTAINTY BUDGET	46
8.	INFORMATION ON THE TESTING LABORATORIES	47
APPENDIX A: TEST DATA		
APPENDIX B: ADT SAR MEASUREMENT SYSTEM		
APPENDIX C: PHOTOGRAPHS OF SYSTEM VALIDATION		
APPENDIX D: SYSTEM CERTIFICATE & CALIBRATION		
APPENDIX E: TEST CONFIGURATIONS		



A D T

1. CERTIFICATION

PRODUCT: Portable Data Terminal

MODEL: SC800 (refer to item 2.1 for more details)

BRAND: SCC

APPLICANT: Shin Chuan Computer Co., Ltd.

TESTED: Jul. 28 ~ Jul. 29, 2009

TEST SAMPLE: ENGINEERING SAMPLE

STANDARDS: FCC Part 2 (Section 2.1093)

FCC OET Bulletin 65, Supplement C (01-01)

RSS-102

The above equipment (model: SC820) have been tested by **Bureau Veritas Consumer Products Services (H.K.) Ltd., Taoyuan Branch**, and found compliance with the requirement of the above standards. The test record, data evaluation & Equipment Under Test (EUT) configurations represented herein are true and accurate accounts of the measurements of the sample's EMC characteristics under the conditions specified in this report.

PREPARED BY : Peggy Chen , **DATE:** Jul. 31, 2009
Peggy Chen / Specialist

TECHNICAL ACCEPTANCE : James Fan , **DATE:** Jul. 31, 2009
Responsible for RF James Fan / Senior Engineer

APPROVED BY : Gary Chang , **DATE:** Jul. 31, 2009
Gary Chang / Assistant Manager

2. GENERAL INFORMATION

2.1 GENERAL DESCRIPTION OF EUT

EUT	Portable Data Terminal	
MODEL NO.	SC800 (refer to Note for more details)	
FCC ID	TQ2-SC800PDT-BWG	
POWER SUPPLY	3.7Vdc from rechargeable lithium battery 12Vdc from power adapter	
CLASSIFICATION	Portable device, production unit	
MODULATION TYPE	GMSK / 8PSK	
OPERATING FREQUENCY	824MHz ~ 849MHz 1850MHz ~ 1910MHz	
CHANNEL FREQUENCIES UNDER TEST AND ITS CONDUCTED OUTPUT POWER	Refer to NOTE 6	
MAXIMUM SAR (1g)	0.388W/kg (GPRS850) 0.069W/kg (E-GPRS850) 0.084W/kg (GPRS1900) 0.069W/kg (E-GPRS1900)	
ANTENNA TYPE	EMbedded antenna	
MAX. ANTENNA GAIN	850MHz: -1dBi	1900MHz: -3dBi
DATA CABLE	Refer to NOTE 5	
I/O PORTS	Refer to user's manual	
ACCESSORY DEVICES	Refer to NOTE 5	

NOTE:

1. The applicant defined the normal working voltage of the battery is from 3.65Vdc to 4.2Vdc.
2. The EUT has two designs, see below table for more details.

MODEL NAME	DESCRIPTION
SC800	26-key button board
SC820	41-key button board

*** Model SC820 was the worst for final test.**

3. The EUT is a Portable Data Terminal. The functions of EUT listed as below:

	REFERENCE REPORT
GPRS/E-GPRS 850	SA980604L08
GPRS/E-GPRS 1900	
WLAN 802.11b/g	SA980604L08-1
BLUETOOTH	

4. The communicated functions of EUT listed as below:

		850MHz	1900MHz	With 802.11b/g WLAN + Bluetooth 2.0 w EDR
2G	GPRS	√	√	
	E-GPRS	√	√	

5. The EUT has following accessories.

NO.	PRODUCT	BRAND	MODEL	DESCRIPTION
1	Power Adapter	ENG	3A-161DN05	I/P: 100-240Vac, 50-60Hz, 0.6A O/P: 5Vdc, 2.6A AC 1.80m non-shielded cable without core DC 1.05m non-shielded cable with one core
2	Battery	ETI CA	-	Rating: 3.7Vdc, 2200mAh (Thin)
3				Rating: 3.7Vdc, 4000mAh (Thick)
4	USB cable	-	-	1.85m shielded USB cable with one core
5				1.00m shielded USB cable with one core (for Cradle use)
6	Cradle	-	SC800-SD	-
7	Earphone	-	-	-
8	SCAN Engine	OPTICON	MDI-1000	2D engine
9		OPTICON	VLM4122	1D engine
10		OPTICON	MDL-1000	1D engine
11		Symbol	SE950	1D engine

6. Channel frequencies under test and its conducted output power listed as below.

Channel (Frequency)	Time Slot 1		Time Slot 2		Time Slot 3		Time Slot 4	
	dBm	W	dBm	W	dBm	W	dBm	W
GPRS 850								
CH 128 (824.2 MHz)	33.0	1.995	31.2	1.318	29.1	0.813	27.0	0.501
CH 190 (836.6 MHz)	32.9	1.950	31.1	1.288	29.2	0.832	27.1	0.513
CH 251 (848.8 MHz)	32.8	1.905	31.1	1.288	29.2	0.832	27.1	0.513
E-GPRS 850								
CH 128 (824.2 MHz)	26.5	0.447	24.3	0.269	22.3	0.170	20.2	0.105
CH 190 (836.6 MHz)	26.3	0.427	24.2	0.263	22.1	0.162	20.1	0.102
CH 251 (848.8 MHz)	26.2	0.417	24.1	0.257	22.0	0.158	20.0	0.100
GPRS 1900								
CH 512 (1850.2 MHz)	29.3	0.851	27.3	0.537	25.3	0.339	23.3	0.214
CH 661 (1880.0 MHz)	29.3	0.851	27.3	0.537	25.4	0.347	23.3	0.214
CH 810 (1909.8 MHz)	29.4	0.871	27.4	0.550	25.5	0.355	23.5	0.224
E-GPRS 1900								
CH 512 (1850.2 MHz)	25.9	0.389	23.7	0.234	21.6	0.145	19.6	0.091
CH 661 (1880.0 MHz)	25.8	0.380	23.5	0.224	21.5	0.141	19.6	0.091
CH 810 (1909.8 MHz)	25.7	0.372	23.5	0.224	21.5	0.141	19.5	0.089

7. Hardware version: EPRV01.

8. Software version: EPRV01.

9. IMEI code: 35563400*****.

10. The above EUT information was declared by manufacturer and for more detailed features description, please refer to the manufacturer's specifications or User's Manual.

2.2 GENERAL DESCRIPTION OF APPLIED STANDARDS

According to the specifications of the manufacturer, this product must comply with the requirements of the following standards:

FCC 47 CFR Part 2 (2.1093)

FCC OET Bulletin 65, Supplement C (01- 01)

RSS-102

IEEE 1528-2003

All test items have been performed and recorded as per the above standards.

2.3 GENERAL INFORMATION OF THE SAR SYSTEM

DASY4 (software 4.7 Build 80) consists of high precision robot, probe alignment sensor, phantom, robot controller, controlled measurement server and near-field probe. The robot includes six axes that can move to the precision position of the DASY4 software defined. The DASY4 software can define the area that is detected by the probe. The robot is connected to controlled box. Controlled measurement server is connected to the controlled robot box. The DAE includes amplifier, signal multiplexing, AD converter, offset measurement and surface detection. It is connected to the Electro-optical coupler (ECO). The ECO performs the conversion from the optical into digital electric signal of the DAE and transfers data to the PC.

EX3DV3 ISOTROPIC E-FIELD PROBE

CONSTRUCTION	Symmetrical design with triangular core Built-in shielding against static charges PEEK enclosure material (resistant to organic solvents, e.g., DGBE)
FREQUENCY	10 MHz to > 6 GHz Linearity: ± 0.2 dB (30 MHz to 6 GHz)
DIRECTIVITY	± 0.3 dB in HSL (rotation around probe axis) ± 0.5 dB in tissue material (rotation normal to probe axis)
DYNAMIC RANGE	10 μ W/g to > 100 mW/g Linearity: ± 0.2 dB (noise: typically < 1 μ W/g)
DIMENSIONS	Overall length: 330 mm (Tip: 20 mm) Tip diameter: 2.5 mm (Body: 12 mm) Typical distance from probe tip to dipole centers: 1 mm
APPLICATION	High precision dosimetric measurements in any exposure scenario (e.g., very strong gradient fields). Only probe which enables compliance testing for frequencies up to 6 GHz with precision of better 30%.

NOTE

1. The Probe parameters have been calibrated by the SPEAG. Please reference "APPENDIX D" for the Calibration Certification Report.
2. For frequencies above 800MHz, calibration in a rectangular wave-guide is used, because wave-guide size is manageable.
3. For frequencies below 800MHz, temperature transfer calibration is used because the wave-guide size becomes relatively large.

TWIN SAM V4.0

CONSTRUCTION The shell corresponds to the specifications of the Specific Anthropomorphic Mannequin (SAM) phantom defined in IEEE 1528-2003, EN 62209-1 and IEC 62209. It enables the dosimetric evaluation of left and right hand phone usage as well as body mounted usage at the flat phantom region. A cover prevents evaporation of the liquid. Reference markings on the phantom allow the complete setup of all predefined phantom positions and measurement grids by manually teaching three points with the robot.

SHELL THICKNESS 2 ± 0.2 mm

FILLING VOLUME Approx. 25 liters

DIMENSIONS Height: 810 mm; Length: 1000 mm; Width: 500 mm

SYSTEM VALIDATION KITS:

CONSTRUCTION	Symmetrical dipole with 1/4 balun Enables measurement of feedpoint impedance with NWA Matched for use near flat phantoms filled with brain simulating solutions Includes distance holder and tripod adaptor
CALIBRATION	Calibrated SAR value for specified position and input power at the flat phantom in brain simulating solutions
FREQUENCY	835, 1900
RETURN LOSS	> 20 dB at specified validation position
POWER CAPABILITY	> 100 W ($f < 1\text{GHz}$); > 40 W ($f > 1\text{GHz}$)
OPTIONS	Dipoles for other frequencies or solutions and other calibration conditions upon request

DEVICE HOLDER FOR SAM TWIN PHANTOM

CONSTRUCTION

The device holder for the GSM900/DCS1800/PCS1900 GSM/GPRS/CDMA Mobile Phone device is designed to cope with different positions given in the standard. It has two scales for the device rotation (with respect to the body axis) and the device inclination (with respect to the line between the ear reference points). The rotation centers for both scales is the ear reference point (ERP). Thus the device needs no repositioning when changing the angles. The holder has been made out of low-loss POM material having the following dielectric parameters: relative permittivity $\epsilon = 3$ and loss tangent $\delta = 0.02$. The amount of dielectric material has been reduced in the closest vicinity of the device, since measurements have suggested that the influence of the clamp on the test results could thus be lowered. The device holder for the portable device makes up of the polyethylene foam. The dielectric parameters of material close to the dielectric parameters of the air.

DATA ACQUISITION ELECTRONICS

CONSTRUCTION

The data acquisition electronics (DAE3) consists of a highly sensitive electrometer grade preamplifier with auto-zeroing, a channel and gain-switching multiplex, a fast 16 bit AD converter and a command decoder and control logic unit. Transmission to the measurement server is accomplished through an optical downlink for data and status information as well as an optical uplink for commands and the clock. The mechanical probe is mounting device includes two different sensor systems for frontal and sideways probe contacts. They are used for mechanical surface detection and probe collision detection. The input impedance of the DAE3 box is 200M Ω ; the inputs are symmetrical and floating. Common mode rejection is above 80 dB.

2.4 GENERAL DESCRIPTION OF THE SPATIAL PEAK SAR EVALUATION

The DASY4 post-processing software (SEMCAD) automatically executes the following procedures to calculate the field units from the micro-volt readings at the probe connector. The parameters used in the evaluation are stored in the configuration modules of the software:

Probe parameters:	- Sensitivity	Norm _i , a _{i0} , a _{i1} , a _{i2}
	- Conversion factor	ConvF _i
	- Diode compression point	dcp _i
Device parameters:	- Frequency	F
	- Crest factor	Cf
Media parameters:	- Conductivity	σ
	- Density	ρ

The first step of the evaluation is a linearization of the filtered input signal to account for the compression characteristics of the detector diode. The compensation depends on the input signal, the diode type and the DC-transmission factor from the diode to the evaluation electronics. If the exciting field is pulsed, the crest factor of the signal must be known to correctly compensate for peak power. The formula for each channel can be given as:

$$V_i = U_i + U_i^2 \cdot \frac{cf}{dcp_i}$$

V _i	=compensated signal of channel i	(i = x, y, z)
U _i	=input signal of channel i	(i = x, y, z)
Cf	=crest factor of exciting field	(DASY parameter)
dcp _i	=diode compression point	(DASY parameter)

From the compensated input signals the primary field data for each channel can be evaluated:

$$\text{E-field probes: } E_i = \sqrt{\frac{V_i}{\text{Norm}_i \cdot \text{ConvF}}}$$

$$\text{H-field probes: } H_i = \sqrt{V_i} \cdot \frac{a_{i0} + a_{i1}f + a_{i2}f^2}{f}$$

V_i	=compensated signal of channel i (i = x, y, z)
Norm_i	=sensor sensitivity of channel i $\mu\text{V}/(\text{V/m})^2$ for (i = x, y, z) E-field Probes
ConvF	= sensitivity enhancement in solution
a_{ij}	= sensor sensitivity factors for H-field probes
F	= carrier frequency [GHz]
E_i	= electric field strength of channel i in V/m
H_i	= magnetic field strength of channel i in A/m

The RSS value of the field components gives the total field strength (Hermitian magnitude):

$$E_{\text{tot}} = \sqrt{E_x^2 + E_y^2 + E_z^2}$$

The primary field data are used to calculate the derived field units.

$$\text{SAR} = E_{\text{tot}}^2 \cdot \frac{\sigma}{\rho \cdot 1'000}$$

SAR	= local specific absorption rate in mW/g
E_{tot}	= total field strength in V/m
σ	= conductivity in [mho/m] or [Siemens/m]
ρ	= equivalent tissue density in g/cm ³

Note that the density is set to 1, to account for actual head tissue density rather than the density of the tissue simulating liquid. The entire evaluation of the spatial peak values is performed within the Post-processing engine (SEMCAD). The system always gives the maximum values for the 1 g and 10 g cubes. The algorithm to find the cube with highest averaged SAR is divided into the following stages:

1. The extraction of the measured data (grid and values) from the Zoom Scan
2. The calculation of the SAR value at every measurement point based on all stored data (A/D values and measurement parameters)
3. The generation of a high-resolution mesh within the measured volume
4. The interpolation of all measured values from the measurement grid to the high-resolution grid
5. The extrapolation of the entire 3-D field distribution to the phantom surface over the distance from sensor to surface
6. The calculation of the averaged SAR within masses of 1 g and 10 g.

The probe is calibrated at the center of the dipole sensors that is located 1 to 2.7mm away from the probe tip. During measurements, the probe stops shortly above the phantom surface, depending on the probe and the surface detecting system. Both distances are included as parameters in the probe configuration file. The software always knows exactly how far away the measured point is from the surface. As the probe cannot directly measure at the surface, the values between the deepest measured point and the surface must be extrapolated. The angle between the probe axis and the surface normal line is less than 30 degree.

In the Area Scan, the gradient of the interpolation function is evaluated to find all the extreme of the SAR distribution. The uncertainty on the locations of the extreme is less than 1/20 of the grid size. Only local maximum within -2 dB of the global maximum are searched and passed for the Cube Scan measurement. In the Cube Scan, the interpolation function is used to extrapolate the Peak SAR from the lowest measurement points to the inner phantom surface (the extrapolation distance). The uncertainty increases with the extrapolation distance. To keep the uncertainty within 1% for the 1 g and 10 g cubes, the extrapolation distance should not be larger than 5mm.

The maximum search is automatically performed after each area scan measurement. It is based on splines in two or three dimensions. The procedure can find the maximum for most SAR distributions even with relatively large grid spacing. After the area scanning measurement, the probe is automatically moved to a position at the interpolated maximum. The following scan can directly use this position for reference, e.g., for a finer resolution grid or the cube evaluations. The 1g and 10g peak evaluations are only available for the predefined cube 7 x 7 x 7 scans. The routines are verified and optimized for the grid dimensions used in these cube measurements. The measured volume of 30 x 30 x 30mm contains about 30g of tissue. The first procedure is an extrapolation (incl. boundary correction) to get the points between the lowest measured plane and the surface. The next step uses 3D interpolation to get all points within the measured volume in a 1mm grid (42875 points). In the last step, a 1g cube is placed numerically into the volume and its averaged SAR is calculated. This cube is then moved around until the highest averaged SAR is found. If the highest SAR is found at the edge of the measured volume, the system will issue a warning: higher SAR values might be found outside of the measured volume. In that case the cube measurement can be repeated, using the new interpolated maximum as the center.

3. DESCRIPTION OF SUPPORT UNITS

The EUT has been tested as an independent unit together with other necessary accessories or support units. The following support units or accessories were used to form a representative test configuration during the tests.

NO.	PRODUCT	BRAND	MODEL NO.	SERIAL NO.	DATE OF CALIBRATION	DUE DATE OF CALIBRATION
1	Universal Radio Communication Tester	R&S	CMU200	104958	Sep. 05, 2009	Sep. 04, 2010

NO.	SIGNAL CABLE DESCRIPTION OF THE ABOVE SUPPORT UNITS
1	NA

NOTE: All power cords of the above support units are non shielded (1.8m).

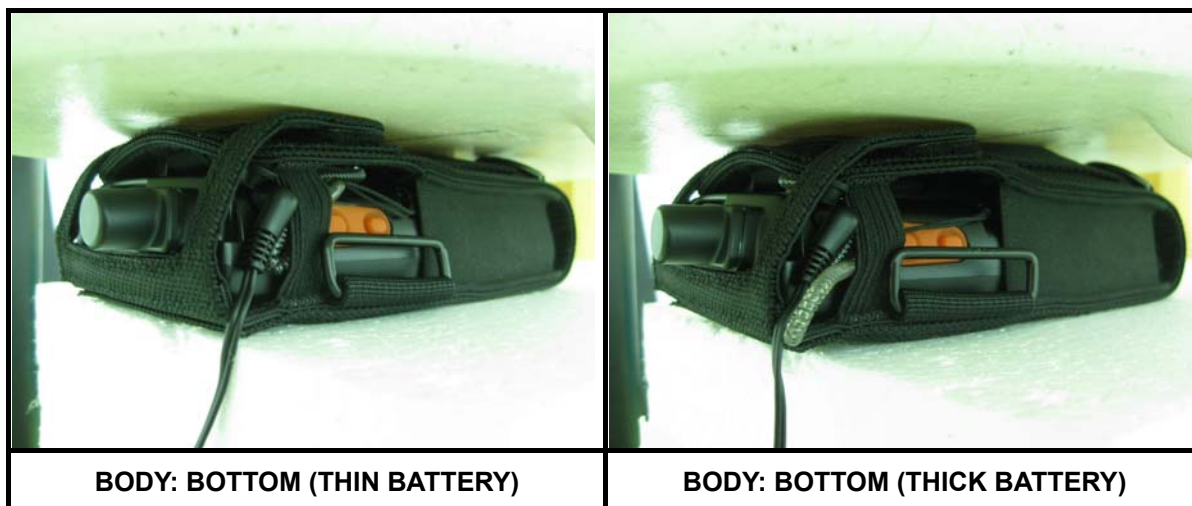
4. DESCRIPTION OF TEST POSITION AND CONFIGURATIONS

4.1 DESCRIPTION OF ANTENNA LOCATION



4.2 DESCRIPTION OF ASSESSMENT POSITION

The following test configurations have been applied in this test report:



4.3 DESCRIPTION OF TEST POSITION

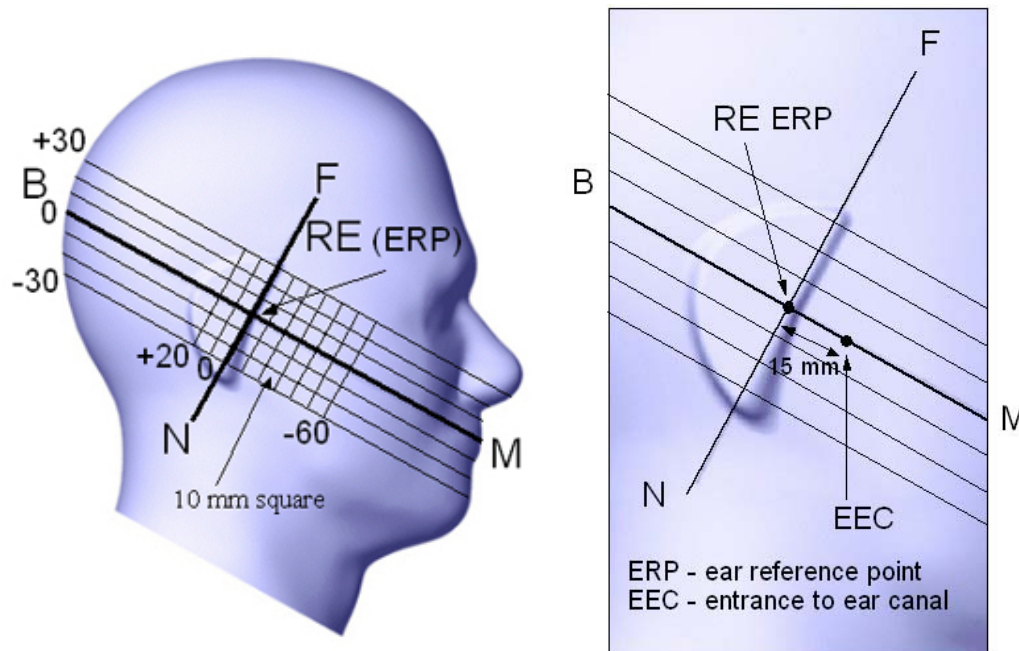


FIGURE 3.1

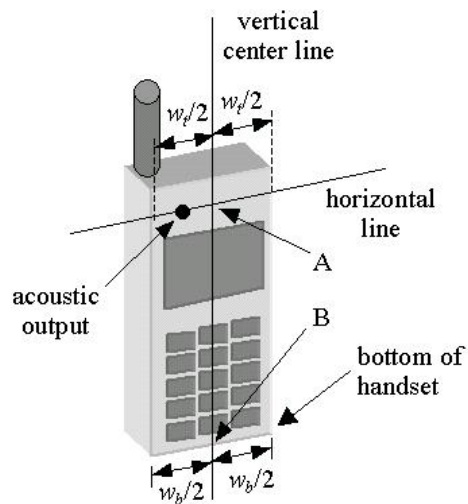


FIGURE 3.1a

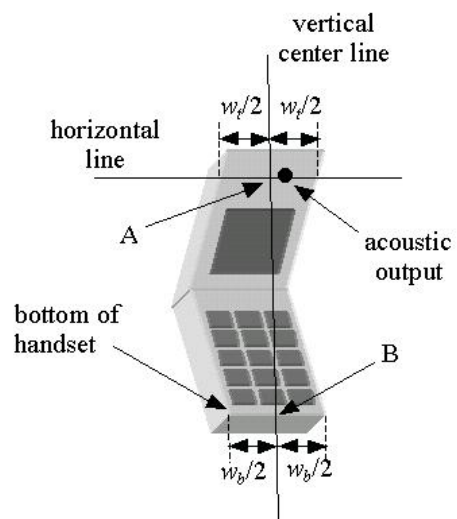
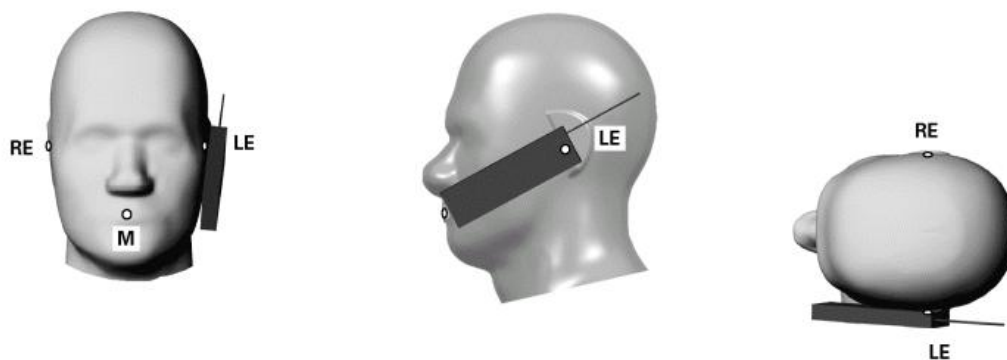


FIGURE 3.1b

4.1.1 TOUCH/CHEEK TEST POSITION

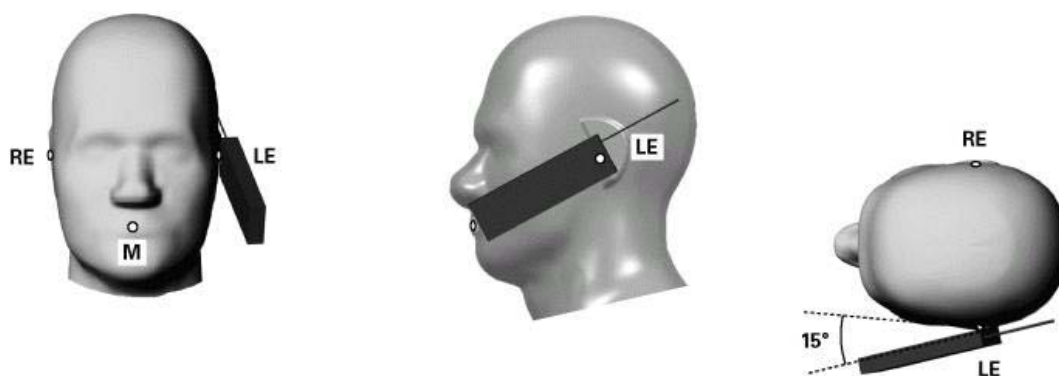
The head position in Figure 3.1, the ear reference points ERP are 15mm above entrance to ear canal along the B-M line. The line N-F (Neck-Front) is perpendicular to the B-M (Back Mouth) line. The handset device in Figure 3.1a and 3.1b. The vertical centerline pass through two points on the front side of handset: the midpoint of the width w_t of the handset at the level of the acoustic output (point A) and the midpoint of the width w_b of the bottom of the handset (point B). The vertical centerline is perpendicular to the horizontal line and pass through the center of the acoustic output. The point A touches the ERP and the vertical centerline of the handset is parallel to the B-M line. While maintaining the point A contact with the ear(ERP), rotate the handset about the line NF until any point on handset is in contact with the cheek of the phantom



TOUCH/CHEEK POSITION FIGURE

4.1.2 TILT TEST POSITION

Adjust the device in the cheek position. While maintaining a point of the handset contact in the ear, move the bottom of the handset away from the mouth by an angle of 15 degrees.



TILT POSITION FIGURE

4.1.3 BODY-WORN CONFIGURATION

The handset device attached the belt clip or the holster. The keypad face of the handset is against with the bottom of the flat phantom face and the bottom of the keypad face contact to the bottom of the flat phantom.

When multiple accessories that do not contain metallic components are supplied with the device, the device may be tested with only the accessory that dictates the closest spacing to the body. When multiple accessories that contain metallic components are supplied with the device, the device must be tested with each accessory that contains a unique metallic component. If multiple accessories share an identical metallic component (e.g., the same metallic belt-clip used with different holsters with no other metallic components), only accessory that dictates the closest spacing to the body must be tested.

4.4 DESCRIPTION OF TEST MODE

TEST MODE	COMMUNICATION MODE	MODULATION TYPE	ASSESSMENT POSTITION	TESTED CHANNEL	SCAN ENGINE MODEL	BATTERY
1	GPRS850 TS1	GMSK	Body / Bottom 0mm	190	VLM4122	Thin
2		GMSK			MDL-1000	
3		GMSK			MDI-1000	Thick
4		GMSK				
5		GMSK			SE950	Thin
6		GMSK				Thick
7	GPRS850 TS2	GMSK				Thin
8	GPRS850 TS3	GMSK				
9	GPRS850 TS4	GMSK				
10	E-GPRS850 TS1	8PSK				
11	E-GPRS850 TS2	8PSK				
12	E-GPRS850 TS3	8PSK				
13	E-GPRS850 TS4	8PSK				
14	GPRS1900 TS1	GMSK		661		
15	GPRS1900 TS2	GMSK				
16	GPRS1900 TS3	GMSK				
17	GPRS1900 TS4	GMSK				
18	E-GPRS1900 TS1	8PSK				
19	E-GPRS1900 TS2	8PSK				
20	E-GPRS1900 TS3	8PSK				
21	E-GPRS1900 TS4	8PSK				

4.5 SUMMARY OF TEST RESULTS

ITEM		1	2	3	4	5	6
PART OF ASSESSMENT		BODY POSITION					
COMMUNICATION MODE		GPRS850 TS1					
CHAN.	FREQ. (MHz)	MEASURED VALUE OF 1g SAR (W/kg)					
190	836.6 (Mid.)	0.296	0.270	0.255	0.246	0.307	0.287

ITEM		7	8	9
PART OF ASSESSMENT		BODY POSITION		
COMMUNICATION MODE		GPRS850 TS2	GPRS850 TS3	GPRS850 TS4
CHAN.	FREQ. (MHz)	MEASURED VALUE OF 1g SAR (W/kg)		
190	836.6 (Mid.)	0.388	0.255	0.265

ITEM		10	11	12	13
PART OF ASSESSMENT		BODY POSITION			
COMMUNICATION MODE		E-GPRS850 TS1	E-GPRS850 TS2	E-GPRS850 TS3	E-GPRS850 TS4
CHAN.	FREQ. (MHz)	MEASURED VALUE OF 1g SAR (W/kg)			
190	836.6 (Mid.)	0.055	0.069	0.063	0.052

ITEM		14	15	16	17
PART OF ASSESSMENT		BODY POSITION			
COMMUNICATION MODE		GPRS1900 TS1	GPRS1900 TS2	GPRS1900 TS3	GPRS1900 TS4
CHAN.	FREQ. (MHz)	MEASURED VALUE OF 1g SAR (W/kg)			
661	1880.0 (Mid.)	0.065	0.084	0.082	0.070

ITEM		18	19	20	21
PART OF ASSESSMENT		BODY POSITION			
COMMUNICATION MODE		E-GPRS1900 TS1	E-GPRS1900 TS2	E-GPRS1900 TS3	E-GPRS1900 TS4
CHAN.	FREQ. (MHz)	MEASURED VALUE OF 1g SAR (W/kg)			
661	1880.0 (Mid.)	0.024	0.047	0.069	0.059

NOTE: The worst value of each communication has been marked by boldface.

5. TEST RESULTS

5.1 TEST PROCEDURES

The EUT (Portable Data Terminal) makes a phone call to the communication simulator station. Establish the simulation communication configuration rather the actual communication. Then the EUT could continuous the transmission mode. Adjust the PCL of the base station could controlled the EUT to transmitted the maximum output power. The base station also could control the transmission channel. The SAR value was calculated via the 3D spline interpolation algorithm that has been implemented in the software of DASY4 SAR measurement system manufactured and calibrated by SPEAG. According to the IEEE 1528, the recommended procedure for assessing the peak spatial-average SAR value consists of the following steps:

- Power reference measurement
- Verification of the power reference measurement
- Area scan
- Zoom scan
- Power reference measurement

The area scan with 15mm x 15mm grid was performed for the highest spatial SAR location. Consist of 11 x 13 points while the scan size is the 150mm x 180mm. The zoom scan with 30mm x 30mm x 30mm volume was performed for SAR value averaged over 1g and 10g spatial volumes.

In the zoom scan, the distance between the measurement point at the probe sensor location (geometric center behind the probe tip) and the phantom surface is 4.0 mm and maintained at a constant distance of ± 1.0 mm during a zoom scan to determine peak SAR locations. The distance is 4mm between the first measurement point and the bottom surface of the phantom. The secondary measurement point to the bottom surface of the phantom is with 9mm separation distance. The cube size is 7 x 7 x 7 points consist of 343 points and the grid space is 5mm.

The measurement time is 0.5 s at each point of the zoom scan. The probe boundary effect compensation shall be applied during the SAR test. Because of the tip of the probe to the Phantom surface separated distances are longer than half a tip probe diameter.

In the area scan, the separation distance is 4mm between the each measurement point and the phantom surface. The scan size shall be included the transmission portion of the EUT. The measurement time is the same as the zoom scan. At last the reference power drift shall be less than $\pm 5\%$.

5.2 MEASURED SAR RESULTS

GPRS850 TS1/ GPRS850 TS2/ GPRS850 TS3/ GPRS850 TS4 BAND BODY POSITION

ENVIRONMENTAL CONDITION		Air Temperature : 23.3°C, Liquid Temperature : 22.4°C Humidity : 63%RH					
TESTED BY		Sam Onn			DATE		Jul. 28, 2009
CHAN.	FREQ. (MHz)	MODULATION TYPE	CONDUCTED POWER (W)		POWER DRIFT (%)	DEVICE TEST POSITION MODE	MEASURED 1g SAR (W/kg)
			BEGIN TEST	AFTER TEST			
190	836.6 (Mid.)	GMSK	1.950	1.923	-1.36	1	0.296
190	836.6 (Mid.)	GMSK	1.950	1.922	-1.46	2	0.270
190	836.6 (Mid.)	GMSK	1.950	1.920	-1.53	3	0.255
190	836.6 (Mid.)	GMSK	1.950	1.917	-1.69	4	0.246
190	836.6 (Mid.)	GMSK	1.950	1.916	-1.73	5	0.307
190	836.6 (Mid.)	GMSK	1.950	1.900	-2.56	6	0.287
190	836.6 (Mid.)	GMSK	1.288	1.264	-1.88	7	0.388
190	836.6 (Mid.)	GMSK	0.832	0.816	-1.94	8	0.255
190	836.6 (Mid.)	GMSK	0.513	0.502	-2.09	9	0.265

NOTE:

1. Test configuration of each mode is described in section 4.4.
2. In this testing, the limit for General Population Spatial Peak averaged over **1g, 1.6W/kg**, is applied.
3. Please see the Appendix A for the data.
4. The variation of the EUT conducted power measured before and after SAR testing should not over 5%.

**E-GPRS850 TS1/ E-GPRS850 TS2/ E-GPRS850 TS3/ E-GPRS850 TS4 BAND
BODY POSITION**

ENVIRONMENTAL CONDITION		Air Temperature : 23.3°C, Liquid Temperature : 22.4°C Humidity : 63%RH					
TESTED BY		Sam Onn			DATE		Jul. 28, 2009
CHAN.	FREQ. (MHz)	MODULATION TYPE	CONDUCTED POWER (W)		POWER DRIFT (%)	DEVICE TEST POSITION MODE	MEASURED 1g SAR (W/kg)
			BEGIN TEST	AFTER TEST			
190	836.6 (Mid.)	8PSK	0.427	0.417	-2.17	10	0.055
190	836.6 (Mid.)	8PSK	0.263	0.257	-2.24	11	0.069
190	836.6 (Mid.)	8PSK	0.162	0.158	-2.38	12	0.063
190	836.6 (Mid.)	8PSK	0.102	0.100	-2.45	13	0.052

NOTE:

1. Test configuration of each mode is described in section 4.4.
2. In this testing, the limit for General Population Spatial Peak averaged over **1g, 1.6W/kg**, is applied.
3. Please see the Appendix A for the data.
4. The variation of the EUT conducted power measured before and after SAR testing should not over 5%.

**GPRS1900 TS1/ GPRS1900 TS2/ GPRS1900 TS3/ GPRS1900 TS4 BAND
BODY POSITION**

ENVIRONMENTAL CONDITION		Air Temperature : 23.1°C, Liquid Temperature : 22.0°C Humidity : 60%RH					
TESTED BY		Sam Onn			DATE		Jul. 29, 2009
CHAN.	FREQ. (MHz)	MODULATION TYPE	CONDUCTED POWER (W)		POWER DRIFT (%)	DEVICE TEST POSITION MODE	MEASURED 1g SAR (W/kg)
			BEGIN TEST	AFTER TEST			
661	1880 (Mid.)	GMSK	0.851	0.836	-1.82	14	0.065
661	1880 (Mid.)	GMSK	0.537	0.527	-1.95	15	0.084
661	1880 (Mid.)	GMSK	0.347	0.340	-2.04	16	0.082
661	1880 (Mid.)	GMSK	0.214	0.209	-2.13	17	0.070

NOTE:

1. Test configuration of each mode is described in section 4.4.
2. In this testing, the limit for General Population Spatial Peak averaged over **1g, 1.6W/kg**, is applied.
3. Please see the Appendix A for the data.
4. The variation of the EUT conducted power measured before and after SAR testing should not over 5%.

E-GPRS1900 TS1/ E-GPRS1900 TS2/ E-GPRS1900 TS3/ E-GPRS1900 TS4 BAND BODY POSITION

ENVIRONMENTAL CONDITION		Air Temperature : 23.1°C, Liquid Temperature : 22.0°C Humidity : 60%RH					
TESTED BY		Sam Onn			DATE		Jul. 29, 2009
CHAN.	FREQ. (MHz)	MODULATION TYPE	CONDUCTED POWER (W)		POWER DRIFT (%)	DEVICE TEST POSITION MODE	MEASURED 1g SAR (W/kg)
			BEGIN TEST	AFTER TEST			
661	1880 (Mid.)	8PSK	0.380	0.372	-2.24	18	0.024
661	1880 (Mid.)	8PSK	0.224	0.219	-2.37	19	0.047
661	1880 (Mid.)	8PSK	0.141	0.138	-2.46	20	0.069
661	1880 (Mid.)	8PSK	0.091	0.089	-2.58	21	0.059

NOTE:

1. Test configuration of each mode is described in section 4.4.
2. In this testing, the limit for General Population Spatial Peak averaged over **1g, 1.6W/kg**, is applied.
3. Please see the Appendix A for the data.
4. The variation of the EUT conducted power measured before and after SAR testing should not over 5%.

5.3 SAR LIMITS

HUMAN EXPOSURE	SAR (W/kg)	
	(General Population / Uncontrolled Exposure Environment)	(Occupational / controlled Exposure Environment)
Spatial Average (whole body)	0.08	0.4
Spatial Peak (averaged over 1 g)	1.6	8.0
Spatial Peak (hands/wrists/feet/ankles averaged over 10 g)	4.0	20.0

NOTE:

1. This limits accord to 47 CFR 2.1093 – Safety Limit.
2. The EUT property been complied with the partial body exposure limit under the general population environment.

5.4 RECIPES FOR TISSUE SIMULATING LIQUIDS

For the measurement of the field distribution inside the SAM phantom, the phantom must be filled with 25 liters of tissue simulation liquid.

The following ingredients are used :

- **WATER-** Deionized water (pure H₂O), resistivity ≥ 16 M - as basis for the liquid
- **SUGAR-** Refined sugar in crystals, as available in food shops - to reduce relative permittivity
- **SALT-** Pure NaCl - to increase conductivity
- **CELLULOSE-** Hydroxyethyl-cellulose, medium viscosity (75-125 mPa.s, 2% in water, 20°C),
CAS # 54290 - to increase viscosity and to keep sugar in solution
- **PRESERVATIVE-** Preventol D-7 Bayer AG, D-51368 Leverkusen, CAS # 55965-84-9 - to prevent the spread of bacteria and molds
- **DGMBE-** Diethylenglycol-monobuthyl ether (DGMBE), Fluka Chemie GmbH, CAS # 112-34-5 - to reduce relative permittivity

THE RECIPES FOR 835MHz SIMULATING LIQUID TABLE

INGREDIENT	HEAD SIMULATING LIQUID 835MHz (HSL-835)	MUSCLE SIMULATING LIQUID 835MHz (MSL-835)
Water	40.28%	50.07%
Cellulose	02.41%	NA
Salt	01.38%	0.94%
Preventtol D-7	00.18%	0.09%
Sugar	57.97%	48.2%
Dielectric Parameters at 22°C	f = 835MHz $\epsilon = 41.5 \pm 5\%$ $\sigma = 0.97 \pm 5\%$ S/m	f = 835MHz $\epsilon = 55.0 \pm 5\%$ $\sigma = 1.05 \pm 5\%$ S/m

THE RECIPES FOR 1900MHz SIMULATING LIQUID TABLE

INGREDIENT	HEAD SIMULATING LIQUID 1900MHz (HSL-1900)	MUSCLE SIMULATING LIQUID 1900MHz (MSL-1900)
Water	55.24%	70.16%
DGMBE	44.45%	29.44%
Salt	0.306%	00.39%
Dielectric Parameters at 22°C	f= 1900MHz $\epsilon = 40.0 \pm 5\%$ $\sigma = 1.40 \pm 5\% \text{ S/m}$	f= 1900MHz $\epsilon = 53.3 \pm 5\%$ $\sigma = 1.52 \pm 5\% \text{ S/m}$

Testing the liquids using the Agilent Network Analyzer E8358A and Agilent Dielectric Probe Kit 85070D. The testing procedure is following as

1. Turn Network Analyzer on and allow at least 30 min. warm up.
2. Mount dielectric probe kit so that interconnecting cable to Network Analyzer will not be moved during measurements or calibration.
3. Pour de-ionized water and measure water temperature ($\pm 1^\circ$).
4. Set water temperature in Agilent-Software (Calibration Setup).
5. Perform calibration.
6. Validate calibration with dielectric material of known properties (e.g. polished ceramic slab with $>8\text{mm}$ thickness $\epsilon' = 10.0$, $\epsilon'' = 0.0$). If measured parameters do not fit within tolerance, repeat calibration (± 0.2 for ϵ' : ± 0.1 for ϵ'').
7. Conductivity can be calculated from ϵ'' by $\sigma = \omega \epsilon_0 \epsilon'' = \epsilon'' f [\text{GHz}] / 18$.
8. Measure liquid shortly after calibration. Repeat calibration every hour.
9. Stir the liquid to be measured. Take a sample ($\sim 50\text{ml}$) with a syringe from the center of the liquid container.
10. Pour the liquid into a small glass flask. Hold the syringe at the bottom of the flask to avoid air bubbles.
11. Put the dielectric probe in the glass flask. Check that there are no air bubbles in front of the opening in the dielectric probe kit.
12. Perform measurements.
13. Adjust medium parameters in DASY4 for the frequencies necessary for the measurements ('Setup Config', select medium (e.g. Brain 900 MHz) and press 'Option'-button.

Select the current medium for the frequency of the validation (e.g. Setup Medium Brain 900 MHz).

FOR GPRS850 & E-GPRS850 BAND SIMULATING LIQUID

LIQUID TYPE		MSL-835		
SIMULATING LIQUID TEMP.		22.4		
TEST DATE		Jul. 28, 2009		
TESTED BY		Sam Onn		
FREQ. (MHz)	LIQUID PARAMETER	STANDARD VALUE	MEASUREMENT VALUE	ERROR PERCENTAGE (%)
835.0	Permittivity (ϵ)	55.20	54.80	-0.72
836.6		55.20	54.80	-0.72
835.0	Conductivity (σ) S/m	0.97	1.00	3.09
836.6		0.97	1.00	3.09
Dielectric Parameters Required at 22°C		f= 835MHz ε= 55.0 ± 5% σ= 1.05 ± 5% S/m		

FOR GPRS1900 & E-GPRS1900 BAND SIMULATING LIQUID

LIQUID TYPE		MSL-1900		
SIMULATING LIQUID TEMP.		22.0		
TEST DATE		Jul. 29, 2009		
TESTED BY		Sam Onn		
FREQ. (MHz)	LIQUID PARAMETER	STANDARD VALUE	MEASUREMENT VALUE	ERROR PERCENTAGE (%)
1880	Permittivity	53.30	53.70	0.75
1900	(ϵ)	53.30	53.70	0.75
1880	Conductivity	1.52	1.54	1.32
1900	(σ) S/m	1.52	1.56	2.63
Dielectric Parameters Required at 22°C		f= 1900MHz $\epsilon= 53.3 \pm 5\%$ $\sigma= 1.52 \pm 5\%$ S/m		

5.5 TEST EQUIPMENT FOR TISSUE PROPERTY

ITEM	NAME	BRAND	TYPE	SERIES NO.	DATE OF CALIBRATION	DUE DATE OF CALIBRATION
1	Network Analyzer	Agilent	E8358A	US41480538	Nov. 27, 2008	Nov. 26, 2009
2	Dielectric Probe	Agilent	85070D	US01440176	NA	NA

NOTE:

1. Before starting, all test equipment shall be warmed up for 30min.
2. The tolerance ($k=1$) specified by Agilent for general dielectric measurements, deriving from inaccuracies in the calibration data, analyzer drift, and random errors, are usually $\pm 2.5\%$ and $\pm 5\%$ for measured permittivity and conductivity, respectively. However, the tolerances for the conductivity is smaller for material with large loss tangents, i.e., less than $\pm 2.5\%$ ($k=1$). It can be substantially smaller if more accurate methods are applied.

6. SYSTEM VALIDATION

The system validation was performed in the flat phantom with equipment listed in the following table. Since the SAR value is calculated from the measured electric field, dielectric constant and conductivity of the body tissue and the SAR is proportional to the square of the electric field. So, the SAR value will be also proportional to the RF power input to the system validation dipole under the same test environment. In our system validation test, 250mW RF input power was used.

6.1 TEST EQUIPMENT

ITEM	NAME	BRAND	TYPE	SERIES NO.	DATE OF CALIBRATION	DUE DATE OF CALIBRATION
1	SAM Phantom	S & P	QD000 P40 CA	TP-1150	NA	NA
2	Signal Generator	Agilent	E8257C	MY43320668	Dec. 28, 2008	Dec. 27, 2009
3	E-Field Probe	S & P	EX3DV3	3504	Jan. 22, 2009	Jan. 21, 2010
4	DAE	S & P	DAE	510	Jan. 22, 2009	Jan. 21, 2010
5	Robot Positioner	Staubli Unimation	NA	NA	NA	NA
6	Validation Dipole	S & P	D835V2	4d021	May 25, 2009	May 24, 2010
			D1900V2	5d022	Mar. 17, 2009	Mar. 16, 2010
7	Power Meter	Agilent	E4416A	GB41291763	Sep. 28, 2008	Sep. 29, 2009
8	Power Sensor	Agilent	E9327A	US40441181	Sep. 28, 2008	Sep. 29, 2009

NOTE: Before starting the measurement, all test equipment shall be warmed up for 30min.

6.2 TEST PROCEDURE

Before you start the system performance check, need only to tell the system with which components (probe, medium, and device) are performing the system performance check; the system will take care of all parameters. The dipole must be placed beneath the flat phantom section of the SAM Twin Phantom with the correct distance holder in place. The distance holder should touch the phantom surface with a light pressure at the reference marking (little cross) and be oriented parallel to the long side of the phantom. Accurate positioning is not necessary, since the system will search for the peak SAR location, except that the dipole arms should be parallel to the surface. The device holder for the EUT can be left in place but should be rotated away from the dipole.

1.The "Power Reference Measurement" and "Power Drift Measurement" jobs are located at the beginning and end of the batch process. They measure the field drift at one single point in the liquid over the complete procedure. The indicated drift is mainly the variation of the amplifier output power. If it is too high (above ± 0.1 dB), the system performance check should be repeated; some amplifiers have very high drift during warm-up. A stable amplifier gives drift results in the DASY system below ± 0.02 dB.

2.The "Surface Check" job tests the optical surface detection system of the DASY system by repeatedly detecting the surface with the optical and mechanical surface detector and comparing the results. The output gives the detecting heights of both systems, the difference between the two systems and the standard deviation of the detection repeatability. Air bubbles or refraction in the liquid due to separation of the sugar-water mixture gives poor repeatability (above ± 0.1 mm). In that case it is better to abort the system performance check and stir the liquid.

3. The "Area Scan" job measures the SAR above the dipole on a plane parallel to the surface. It is used to locate the approximate location of the peak SAR. The proposed scan uses large grid spacing for faster measurement; due to the symmetric field, the peak detection is reliable. If a finer graphic is desired, the grid spacing can be reduced. Grid spacing and orientation have no influence on the SAR result.

4. The "Zoom Scan" job measures the field in a volume around the peak SAR value assessed in the previous "Area Scan" job (for more information see the application note on SAR evaluation).

About the validation dipole positioning uncertainty, the constant and low loss dielectric spacer is used to establish the correct distance between the top surface of the dipole and the bottom surface of the phantom, the error component introduced by the uncertainty of the distance between the liquid (i.e., phantom shell) and the validation dipole in the DASY4 system is less than $\pm 0.1\text{mm}$.

$$SAR_{\text{tolerance}} [\%] = 100 \times \left(\frac{(a + d)^2}{a^2} - 1 \right)$$

As the closest distance is 10mm, the resulting tolerance $SAR_{\text{tolerance}} [\%]$ is $< 2\%$.

6.3 VALIDATION RESULTS

SYSTEM VALIDATION TEST OF SIMULATING LIQUID					
FREQUENCY (MHz)	REQUIRED SAR (mW/g)	MEASURED SAR (mW/g)	DEVIATION (%)	SEPARATION DISTANCE	TESTED DATE
MSL 835	2.54 (1g)	2.41	-5.12	15mm	Jul. 28, 2009
MSL 1900	10.20 (1g)	9.57	-6.18	10mm	Jul. 29, 2009
TESTED BY	Sam Onn				

NOTE: Please see Appendix for the photo of system validation test.

6.4 SYSTEM VALIDATION UNCERTAINTIES

In the table below, the system validation uncertainty with respect to the analytically assessed SAR value of a dipole source as given in the IEEE 1528 standard is given. This uncertainty is smaller than the expected uncertainty for mobile phone measurements due to the simplified setup and the symmetric field distribution.

Error Description	Tolerance (±%)	Probability Distribution	Divisor	(C _i)		Standard Uncertainty (±%)		(v _i)
				(1g)	(10g)	(1g)	(10g)	
Measurement System								
Probe Calibration	5.50	Normal	1	1	1	5.50	5.50	∞
Axial Isotropy	4.70	Rectangular	√3	0.7	0.7	1.90	1.90	∞
Hemispherical Isotropy	9.60	Rectangular	√3	0.7	0.7	3.88	3.88	∞
Boundary effects	1.00	Rectangular	√3	1	1	0.58	0.58	∞
Linearity	4.70	Rectangular	√3	1	1	2.71	2.71	∞
System Detection Limits	1.00	Rectangular	√3	1	1	0.58	0.58	∞
Readout Electronics	0.30	Normal	1	1	1	0.30	0.30	∞
Response Time	0.80	Rectangular	√3	1	1	0.46	0.46	∞
Integration Time	2.60	Rectangular	√3	1	1	1.50	1.50	∞
RF Ambient Noise	3.00	Rectangular	√3	1	1	1.73	1.73	∞
RF Ambient Reflections	3.00	Rectangular	√3	1	1	1.73	1.73	∞
Probe Positioner	0.40	Rectangular	√3	1	1	0.23	0.23	∞
Probe Positioning	2.90	Rectangular	√3	1	1	1.67	1.67	∞
Max. SAR Eval.	1.00	Rectangular	√3	1	1	0.58	0.58	∞
Dipole Related								
Dipole Axis to Liquid Distance	2.00	Rectangular	√3	1	1	1.15	1.15	145
Input Power Drift	5.00	Rectangular	√3	1	1	2.89	2.89	∞
Phantom and Tissue parameters								
Phantom Uncertainty	4.00	Rectangular	√3	1	1	2.31	2.31	∞
Liquid Conductivity (target)	5.00	Rectangular	√3	0.64	0.43	1.85	1.24	∞
Liquid Conductivity (measurement)	3.69	Normal	1	0.64	0.43	2.36	1.59	∞
Liquid Permittivity (target)	5.00	Rectangular	√3	0.6	0.49	1.73	1.41	∞
Liquid Permittivity (measurement)	2.16	Normal	1	0.6	0.49	1.30	1.06	∞
Combined Standard Uncertainty						9.87	9.53	
Coverage Factor for 95%						Kp=2		
Expanded Uncertainty (K=2)						19.73	19.06	

NOTE: About the system validation uncertainty assessment, please reference the section 7.

7. MEASUREMENT SAR PROCEDURE UNCERTAINTIES

The assessment of spatial peak SAR of the hand handheld devices is according to IEEE 1528. All testing situation shall be met below these requirements.

- The system is used by an experienced engineer who follows the manual and the guidelines taught during the training provided by SPEAG.
- The probe has been calibrated within the requested period and the stated uncertainty for the relevant frequency bands does not exceed 4.8% ($k=1$).
- The validation dipole has been calibrated within the requested period and the system performance check has been successful.
- The DAE unit has been calibrated within the within the requested period.
- The minimum distance between the probe sensor and inner phantom shell is selected to be between 4 and 5mm.
- The operational mode of the DUT is CW, CDMA, FDMA or TDMA (GSM, DCS, PCS, IS136 and PDC) and the measurement/integration time per point is >500 ms.
- The dielectric parameters of the liquid have been assessed using Agilent 85070D dielectric probe kit or a more accurate method.
- The dielectric parameters are within 5% of the target values.
- The DUT has been positioned as described in section 3.

7.1 PROBE CALIBRATION UNCERTAINTY

SPEAG conducts the probe calibration in compliance with international and national standards (e.g. IEEE 1528, EN 62209-1, IEC 62209, etc.) under ISO17025. The uncertainties are stated on the calibration certificate. For the most relevant frequency bands, these values do not exceed 4.8% ($k=1$). If evaluations of other bands are performed for which the uncertainty exceeds these values, the uncertainty tables given in the summary have to be revised accordingly.

7.2 ISOTROPY UNCERTAINTY

The axial isotropy tolerance accounts for probe rotation around its axis while the hemispherical isotropy error includes all probe orientations and field polarizations. These parameters are assessed by SPEAG during initial calibration. In 2001, SPEAG further tightened its quality controls and warrants that the maximal deviation from axial isotropy is ± 0.20 dB, while the maximum deviation of hemispherical isotropy is ± 0.40 dB, corresponding to $\pm 4.7\%$ and $\pm 9.6\%$, respectively. A weighting factor of c_p equal to 0.5 can be applied, since the axis of the probe deviates less than 30 degrees from the normal surface orientation.

7.3 BOUNDARY EFFECT UNCERTAINTY

The effect can be estimated according to the following error approximation formula

$$SAR_{tolerance} [\%] = SAR_{be} [\%] \times \frac{(d_{be} + d_{step})^2}{2d_{step}} \frac{e^{\frac{d_{be}}{\delta/2}}}{\delta/2}$$

$$d_{be} + d_{step} < 10mm$$

The parameter d_{be} is the distance in mm between the surface and the closest measurement point used in the averaging process; d_{step} is the separation distance in mm between the first and second measurement points; δ is the minimum penetration depth in mm within the head tissue equivalent liquids (i.e., $\delta = 13.95$ mm at 3GHz); SAR_{be} is the deviation between the measured SAR value at the distance d_{be} from the boundary and the wave-guide analytical value SAR_{ref} . DASY4 applies a boundary effect compensation algorithm according to IEEE 1528, which is possible since the axis of the probe never deviates more than 30 degrees from the normal surface orientation. $SAR_{be}[\%]$ is assessed during the calibration process and SPEAG warrants that the uncertainty at distances larger than 4mm is always less than 1%. In summary, the worst case boundary effect SAR tolerance[%] for scanning distances larger than 4mm is $< \pm 0.8\%$.

7.4 PROBE LINEARITY UNCERTAINTY

Field probe linearity uncertainty includes errors from the assessment and compensation of the diode compression effects for CW and pulsed signals with known duty cycles. This error is assessed using the procedure described in IEEE 1528. For SPEAG field probes, the measured difference between CW and pulsed signals, with pulse frequencies between 10 Hz and 1 kHz and duty cycles between 1 and 100, is $< \pm 0.20$ dB ($< \pm 4.7\%$).

7.5 READOUT ELECTRONICS UNCERTAINTY

All uncertainties related to the probe readout electronics (DAE unit), including the gain and linearity of the instrumentation amplifier, its loading effect on the probe, and accuracy of the signal conversion algorithm, have been assessed accordingly to IEEE 1528. The combination (root-sum-square RSS method) of these components results in an overall maximum error of $\pm 1.0\%$.

7.6 RESPONSE TIME UNCERTAINTY

The time response of the field probes is assessed by exposing the probe to a well-controlled electric field producing SAR larger than 2.0 W/kg at the tissue medium surface. The signal response time is evaluated as the time required by the system to reach 90% of the expected final value after an on/of switch of the power source. Analytically, it can be expressed as:

$$SAR_{tolerance} [\%] = 100 \times \left(\frac{T_m}{T_m + \tau e^{-T_m/\tau}} - 1 \right)$$

where T_m is 500 ms, i.e., the time between measurement samples, and τ the time constant. The response time τ of SPEAG's probes is < 5 ms. In the current implementation, DASY4 waits longer than 100 ms after having reached the grid point before starting a measurement, i.e., the response time uncertainty is negligible.

7.7 INTEGRATION TIME UNCERTAINTY

If the device under test does not emit a CW signal, the integration time applied to measure the electric field at a specific point may introduce additional uncertainties due to the discretization and can be assessed as follows

$$SAR_{tolerance} [\%] = 100 \times \sum_{allsub-frames} \frac{t_{frame}}{t_{integration}} \frac{slot_{idle}}{slot_{total}}$$

The tolerances for the different systems are given in Table 7.1, whereby the worst-case $SAR_{tolerance}$ is 2.6%.

System	$SAR_{tolerance} \%$
CW	0
CDMA*	0
WCDMA*	0
FDMA	0
IS-136	2.6
PDC	2.6
GSM/DCS/PCS	1.7
DECT	1.9
Worst-Case	2.6

TABLE 7.1

7.8 PROBE POSITIONER MECHANICAL TOLERANCE

The mechanical tolerance of the field probe positioner can introduce probe positioning uncertainties. The resulting SAR uncertainty is assessed by comparing the SAR obtained according to the specifications of the probe positioner with respect to the actual position defined by the geometric center of the probe sensors. The tolerance is determined as:

$$SAR_{tolerance} [\%] = 100 \times \frac{d_{ph}}{\delta/2}$$

The specified repeatability of the RX robot family used in DASY4 systems is $\pm 25 \mu\text{m}$. The absolute accuracy for short distance movements is better than $\pm 0.1\text{mm}$, i.e., the $SAR_{tolerance} [\%]$ is better than 1.5% (rectangular).

7.9 PROBE POSITIONING

The probe positioning procedures affect the tolerance of the separation distance between the probe tip and the phantom surface as:

$$SAR_{tolerance} [\%] = 100 \times \frac{d_{ph}}{\delta/2}$$

where d_{ph} is the maximum deviation of the distance between the probe tip and the phantom surface. The optical surface detection has a precision of better than 0.2 mm, resulting in an $SAR_{tolerance} [\%]$ of <2.9% (rectangular distribution). Since the mechanical detection provides better accuracy, 2.9% is a worst-case figure for DASY4 system.

7.10 PHANTOM UNCERTAINTY

The SAR measurement uncertainty due to SPEAG phantom shell production tolerances has been evaluated using

$$SAR_{tolerance} [\%] \cong 100 \times \frac{2d}{a}, \quad d \ll a$$

For a maximum deviation d of the inner and outer shell of the phantom from that specified in the CAD file of ± 0.2 mm, and a 10mm spacing a between source and tissue liquid, the calculated phantom uncertainty is $\pm 4.0\%$.

7.11 DASY4 UNCERTAINTY BUDGET

Error Description	Tolerance (±%)	Probability Distribution	Divisor	(C _i)		Standard Uncertainty (±%)		(v _i)
				(1g)	(10g)	(1g)	(10g)	
Measurement Equipment								
Probe Calibration	5.50	Normal	1	1	1	5.50	5.50	∞
Axial Isotropy	4.70	Rectangular	√3	0.7	0.7	1.90	1.90	∞
Hemispherical Isotropy	9.60	Rectangular	√3	0.7	0.7	3.88	3.88	∞
Boundary effects	1.00	Rectangular	√3	1	1	0.58	0.58	∞
Linearity	4.70	Rectangular	√3	1	1	2.71	2.71	∞
System Detection Limits	1.00	Rectangular	√3	1	1	0.58	0.58	∞
Readout Electronics	0.30	Normal	1	1	1	0.30	0.30	∞
Response Time	0.80	Rectangular	√3	1	1	0.46	0.46	∞
Integration Time	2.60	Rectangular	√3	1	1	1.50	1.50	∞
RF Ambient Noise	3.00	Rectangular	√3	1	1	1.73	1.73	∞
RF Ambient Reflections	3.00	Rectangular	√3	1	1	1.73	1.73	∞
Probe Positioner	0.40	Rectangular	√3	1	1	0.23	0.23	∞
Probe Positioning	2.90	Rectangular	√3	1	1	1.67	1.67	∞
Max. SAR Eval.	1.00	Rectangular	√3	1	1	0.58	0.58	∞
Test Sample Related								
Device Positioning	0.69	Normal	1	1	1	0.69	0.69	10
Device Holder	3.60	Normal	1	1	1	3.60	3.60	5
Power Drift	5.00	Rectangular	√3	1	1	2.89	2.89	∞
Phantom and Tissue parameters								
Phantom Uncertainty	4.00	Rectangular	√3	1	1	2.31	2.31	∞
Liquid Conductivity (target)	5.00	Rectangular	√3	0.64	0.43	1.85	1.24	∞
Liquid Conductivity (measurement)	3.69	Normal	1	0.64	0.43	2.36	1.59	∞
Liquid Permittivity (target)	5.00	Rectangular	√3	0.6	0.49	1.73	1.41	∞
Liquid Permittivity (measurement)	2.16	Normal	1	0.6	0.49	1.30	1.06	∞
Combined Standard Uncertainty						10.46	10.15	
Coverage Factor for 95%						Kp=2		
Expanded Uncertainty (K=2)						20.92	20.29	

TABLE 7.2

**A D T**

8. INFORMATION ON THE TESTING LABORATORIES

We, Bureau Veritas Consumer Products Services (H.K.) Ltd., Taoyuan Branch, were founded in 1988 to provide our best service in EMC, Radio, Telecom and Safety consultation. Our laboratories are accredited and approved by the following approval agencies according to ISO/IEC 17025.

USA	FCC, NVLAP
GERMANY	TUV Rheinland
JAPAN	VCCI
NORWAY	NEMKO
CANADA	INDUSTRY CANADA , CSA
R.O.C.	TAF, BSMI, NCC
NETHERLANDS	Telefication
SINGAPORE	GOST-ASIA (MOU)
RUSSIA	CERTIS (MOU)

Copies of accreditation certificates of our laboratories obtained from approval agencies can be downloaded from our web site:

www.adt.com.tw/index.5/phtml. If you have any comments, please feel free to contact us at the following:

Linko EMC/RF Lab:

Tel: 886-2-26052180

Fax: 886-2-26051924

Hsin Chu EMC/RF Lab:

Tel: 886-3-5935343

Fax: 886-3-5935342

Hwa Ya EMC/RF/Safety/Telecom Lab:

Tel: 886-3-3183232

Fax: 886-3-3185050

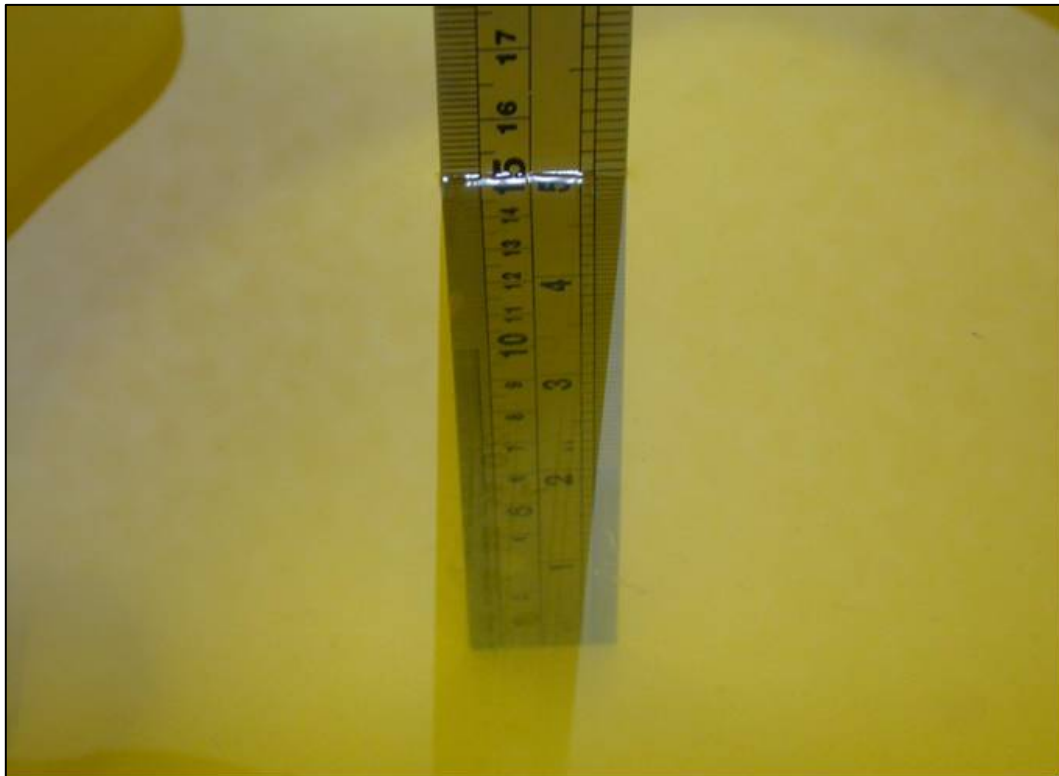
Web Site: www.adt.com.tw

The address and road map of all our labs can be found in our web site also.

APPENDIX A: TEST DATA

Liquid Level Photo

MSL 835MHz D=152mm



MSL 1900MHz D=150mm



Date/Time: 2009/7/28 10:15:28

Test Laboratory: Bureau Veritas ADT

M01-GPRS850 TS1-Ch190

DUT: Portable Data Terminal ; Type: VLM4122

Communication System: PCS 850 ; Frequency: 836.6 MHz ; Duty Cycle: 1:8.3

Medium: MSL835 Medium parameters used: $f = 836.6$ MHz; $\sigma = 1$ mho/m; $\epsilon_r = 54.8$; $\rho = 1000$ kg/m³

Phantom section: Flat Section ; DUT test position : Body ; Modulation Type: GMSK / UL 1 time slot

Separation Distance : 0 mm (The bottom side of the EUT with leather to the Phantom)

DASY4 Configuration:

- Probe: EX3DV3 - SN3504 ; ConvF(9.71, 9.71, 9.71) ; Calibrated: 2009/1/21
- Sensor-Surface: 3mm (Mechanical Surface Detection)
- Electronics: DAE3 Sn510 ; Calibrated: 2009/1/21
- Phantom: SAM 12 ; Type: SAM V4.0; Serial: TP 1202
- Measurement SW: DASY4, V4.7 Build 80 ; Postprocessing SW: SEMCAD, V1.8 Build 186

Mid Channel 190/Area Scan (8x14x1): Measurement grid: dx=15mm, dy=15mm

Maximum value of SAR (measured) = 0.329 mW/g

Mid Channel 190/Zoom Scan (7x7x7) (7x7x7)/Cube 0: Measurement grid: dx=5mm, dy=5mm, dz=5mm

Reference Value = 15.9 V/m

Peak SAR (extrapolated) = 0.384 W/kg

SAR(1 g) = 0.296 mW/g; SAR(10 g) = 0.220 mW/g

Maximum value of SAR (measured) = 0.328 mW/g

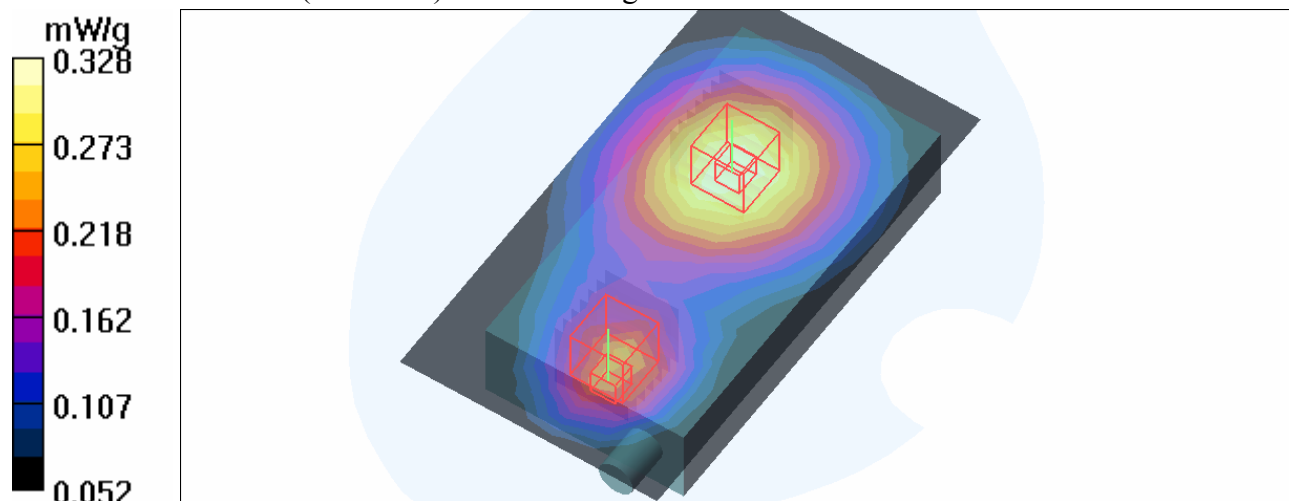
Mid Channel 190/Zoom Scan (7x7x7) (7x7x7)/Cube 1: Measurement grid: dx=5mm, dy=5mm, dz=5mm

Reference Value = 15.9 V/m

Peak SAR (extrapolated) = 0.404 W/kg

SAR(1 g) = 0.185 mW/g; SAR(10 g) = 0.126 mW/g

Maximum value of SAR (measured) = 0.237 mW/g



Date/Time: 2009/7/28 10:48:39

Test Laboratory: Bureau Veritas ADT

M02-GPRS850 TS1-Ch190

DUT: Portable Data Terminal ; Type: MDL-1000

Communication System: PCS 850 ; Frequency: 836.6 MHz ; Duty Cycle: 1:8.3

Medium: MSL835 Medium parameters used: $f = 836.6$ MHz; $\sigma = 1$ mho/m; $\epsilon_r = 54.8$; $\rho = 1000$ kg/m³

Phantom section: Flat Section ; DUT test position : Body ; Modulation Type: GMSK / UL 1 time slot

Separation Distance : 0 mm (The bottom side of the EUT with leather to the Phantom)

DASY4 Configuration:

- Probe: EX3DV3 - SN3504 ; ConvF(9.71, 9.71, 9.71) ; Calibrated: 2009/1/21
- Sensor-Surface: 3mm (Mechanical Surface Detection)
- Electronics: DAE3 Sn510 ; Calibrated: 2009/1/21
- Phantom: SAM 12 ; Type: SAM V4.0; Serial: TP 1202
- Measurement SW: DASY4, V4.7 Build 80 ; Postprocessing SW: SEMCAD, V1.8 Build 186

Mid Channel 190/Area Scan (8x14x1): Measurement grid: dx=15mm, dy=15mm

Maximum value of SAR (measured) = 0.300 mW/g

Mid Channel 190/Zoom Scan (7x7x7) (7x7x7)/Cube 0: Measurement grid: dx=5mm, dy=5mm, dz=5mm

Reference Value = 15.3 V/m

Peak SAR (extrapolated) = 0.388 W/kg

SAR(1 g) = 0.270 mW/g; SAR(10 g) = 0.185 mW/g

Maximum value of SAR (measured) = 0.310 mW/g

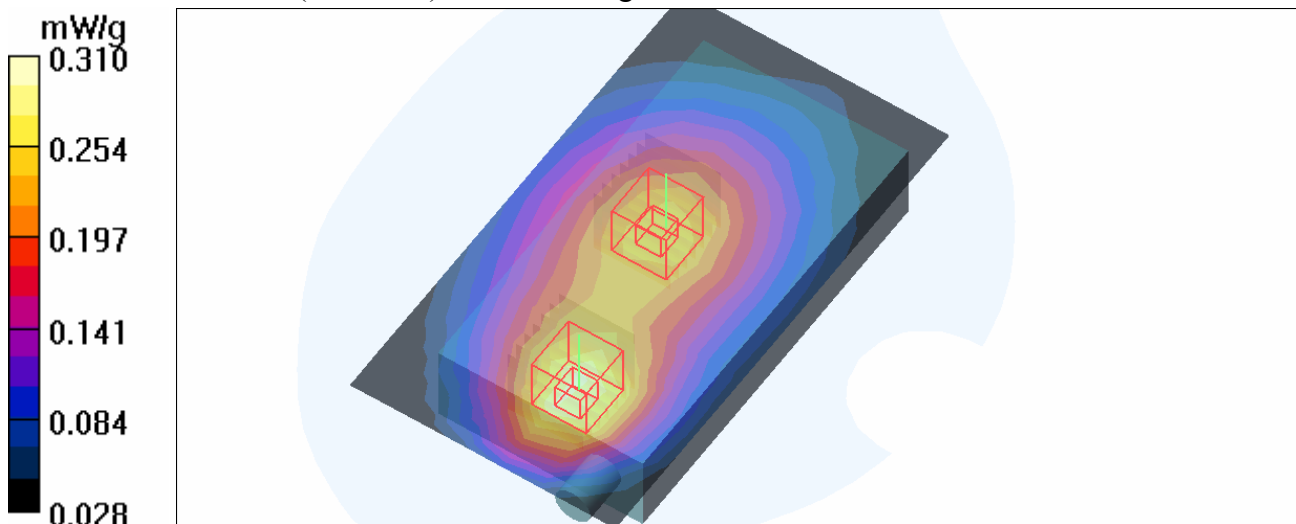
Mid Channel 190/Zoom Scan (7x7x7) (7x7x7)/Cube 1: Measurement grid: dx=5mm, dy=5mm, dz=5mm

Reference Value = 15.3 V/m

Peak SAR (extrapolated) = 0.292 W/kg

SAR(1 g) = 0.229 mW/g; SAR(10 g) = 0.173 mW/g

Maximum value of SAR (measured) = 0.251 mW/g



Date/Time: 2009/7/28 11:52:44

Test Laboratory: Bureau Veritas ADT

M03-GPRS850 TS1-Ch190

DUT: Portable Data Terminal ; Type: MDI-1000

Communication System: PCS 850 ; Frequency: 836.6 MHz ; Duty Cycle: 1:8.3

Medium: MSL835 Medium parameters used: $f = 836.6$ MHz; $\sigma = 1$ mho/m; $\epsilon_r = 54.8$; $\rho = 1000$ kg/m³

Phantom section: Flat Section ; DUT test position : Body ; Modulation Type: GMSK / UL 1 time slot

Separation Distance : 0 mm (The bottom side of the EUT with leather to the Phantom)

DASY4 Configuration:

- Probe: EX3DV3 - SN3504 ; ConvF(9.71, 9.71, 9.71) ; Calibrated: 2009/1/21
- Sensor-Surface: 3mm (Mechanical Surface Detection)
- Electronics: DAE3 Sn510 ; Calibrated: 2009/1/21
- Phantom: SAM 12 ; Type: SAM V4.0; Serial: TP 1202
- Measurement SW: DASY4, V4.7 Build 80 ; Postprocessing SW: SEMCAD, V1.8 Build 186

Mid Channel 190/Area Scan (8x14x1): Measurement grid: dx=15mm, dy=15mm

Maximum value of SAR (measured) = 0.277 mW/g

Mid Channel 190/Zoom Scan (7x7x7) (7x7x7)/Cube 0: Measurement grid: dx=5mm, dy=5mm, dz=5mm

Reference Value = 15.7 V/m

Peak SAR (extrapolated) = 0.331 W/kg

SAR(1 g) = 0.255 mW/g; SAR(10 g) = 0.189 mW/g

Maximum value of SAR (measured) = 0.283 mW/g

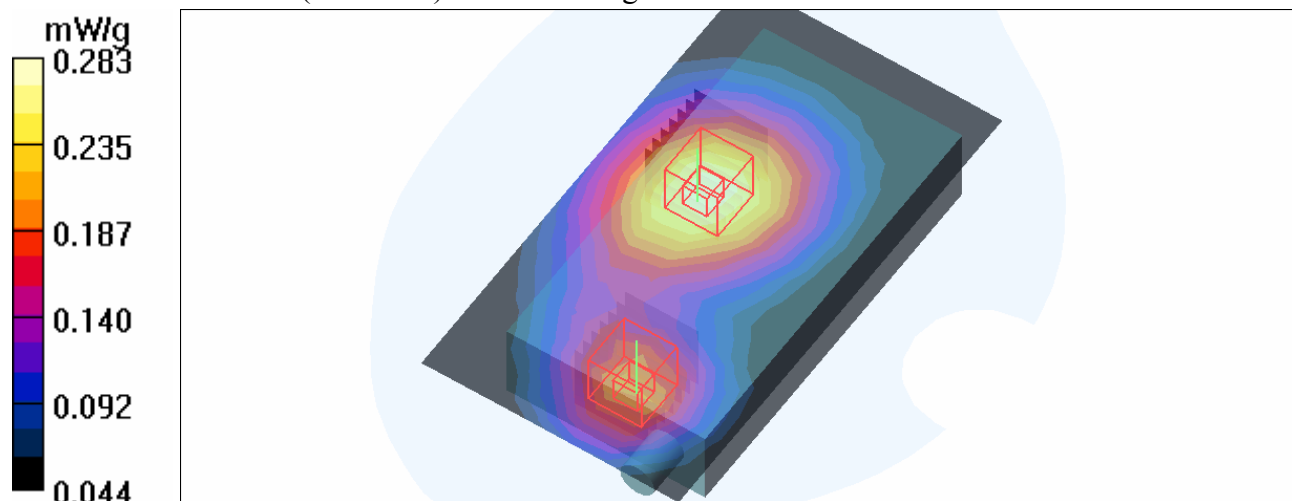
Mid Channel 190/Zoom Scan (7x7x7) (7x7x7)/Cube 1: Measurement grid: dx=5mm, dy=5mm, dz=5mm

Reference Value = 15.7 V/m

Peak SAR (extrapolated) = 0.256 W/kg

SAR(1 g) = 0.184 mW/g; SAR(10 g) = 0.128 mW/g

Maximum value of SAR (measured) = 0.209 mW/g



Date/Time: 2009/7/28 12:25:54

Test Laboratory: Bureau Veritas ADT

M04-GPRS850 TS1-Ch190 / Thick Bat

DUT: Portable Data Terminal ; Type: MDI-1000

Communication System: PCS 850 ; Frequency: 836.6 MHz ; Duty Cycle: 1:8.3

Medium: MSL835 Medium parameters used: $f = 836.6$ MHz; $\sigma = 1$ mho/m; $\epsilon_r = 54.8$; $\rho = 1000$ kg/m³

Phantom section: Flat Section ; DUT test position : Body ; Modulation Type: GMSK / UL 1 time slot

Separation Distance : 0 mm (The bottom side of the EUT with leather to the Phantom)

DASY4 Configuration:

- Probe: EX3DV3 - SN3504 ; ConvF(9.71, 9.71, 9.71) ; Calibrated: 2009/1/21
- Sensor-Surface: 3mm (Mechanical Surface Detection)
- Electronics: DAE3 Sn510 ; Calibrated: 2009/1/21
- Phantom: SAM 12 ; Type: SAM V4.0; Serial: TP 1202
- Measurement SW: DASY4, V4.7 Build 80 ; Postprocessing SW: SEMCAD, V1.8 Build 186

Mid Channel 190/Area Scan (8x14x1): Measurement grid: dx=15mm, dy=15mm

Maximum value of SAR (measured) = 0.268 mW/g

Mid Channel 190/Zoom Scan (7x7x7) (7x7x7)/Cube 0: Measurement grid: dx=5mm, dy=5mm, dz=5mm

Reference Value = 14.9 V/m

Peak SAR (extrapolated) = 0.319 W/kg

SAR(1 g) = 0.246 mW/g; SAR(10 g) = 0.182 mW/g

Maximum value of SAR (measured) = 0.274 mW/g

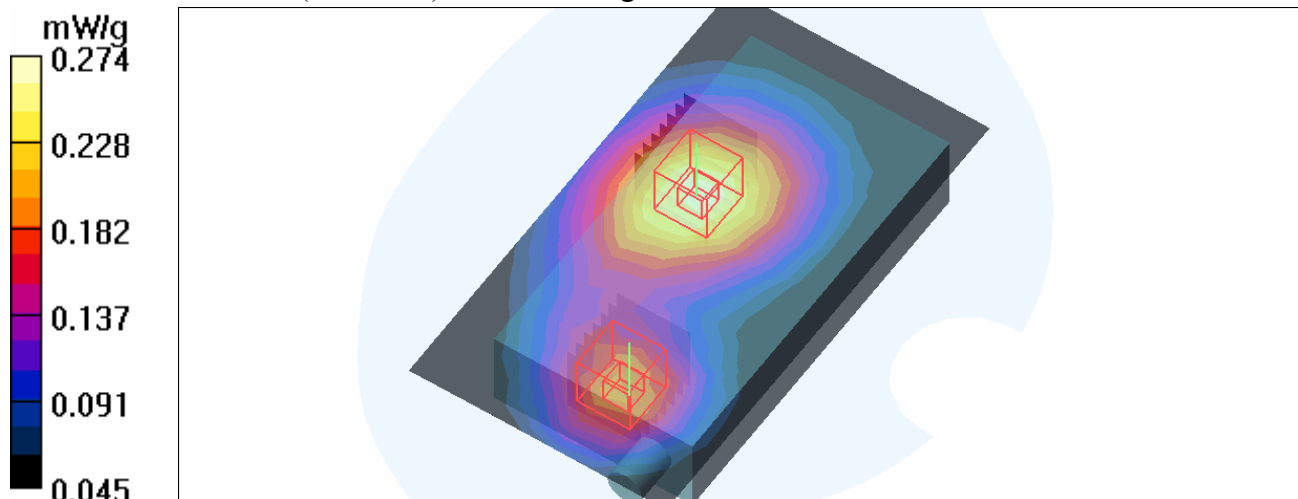
Mid Channel 190/Zoom Scan (7x7x7) (7x7x7)/Cube 1: Measurement grid: dx=5mm, dy=5mm, dz=5mm

Reference Value = 14.9 V/m

Peak SAR (extrapolated) = 0.256 W/kg

SAR(1 g) = 0.183 mW/g; SAR(10 g) = 0.127 mW/g

Maximum value of SAR (measured) = 0.208 mW/g



Date/Time: 2009/7/28 13:09:39

Test Laboratory: Bureau Veritas ADT

M05-GPRS850 TS1-Ch190

DUT: Portable Data Terminal ; Type: SE950

Communication System: PCS 850 ; Frequency: 836.6 MHz ; Duty Cycle: 1:8.3

Medium: MSL835 Medium parameters used: $f = 836.6$ MHz; $\sigma = 1$ mho/m; $\epsilon_r = 54.8$; $\rho = 1000$ kg/m³

Phantom section: Flat Section ; DUT test position : Body ; Modulation Type: GMSK / UL 1 time slot

Separation Distance : 0 mm (The bottom side of the EUT with leather to the Phantom)

DASY4 Configuration:

- Probe: EX3DV3 - SN3504 ; ConvF(9.71, 9.71, 9.71) ; Calibrated: 2009/1/21
- Sensor-Surface: 3mm (Mechanical Surface Detection)
- Electronics: DAE3 Sn510 ; Calibrated: 2009/1/21
- Phantom: SAM 12 ; Type: SAM V4.0; Serial: TP 1202
- Measurement SW: DASY4, V4.7 Build 80 ; Postprocessing SW: SEMCAD, V1.8 Build 186

Mid Channel 190/Area Scan (8x14x1): Measurement grid: dx=15mm, dy=15mm

Maximum value of SAR (measured) = 0.336 mW/g

Mid Channel 190/Zoom Scan (7x7x7) (7x7x7)/Cube 0: Measurement grid: dx=5mm, dy=5mm, dz=5mm

Reference Value = 17.0 V/m

Peak SAR (extrapolated) = 0.400 W/kg

SAR(1 g) = 0.307 mW/g; SAR(10 g) = 0.229 mW/g

Maximum value of SAR (measured) = 0.342 mW/g

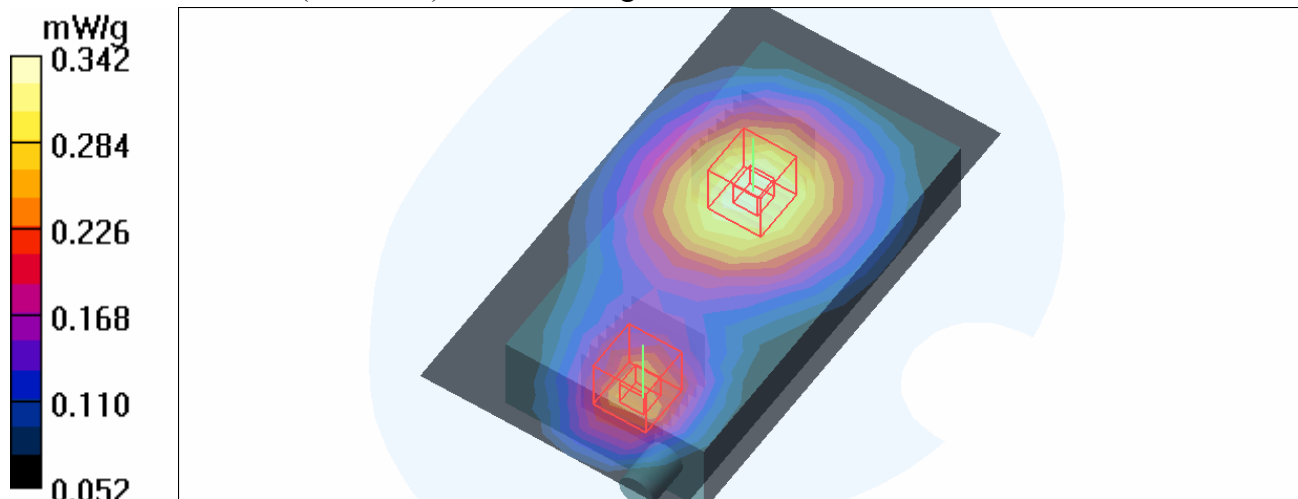
Mid Channel 190/Zoom Scan (7x7x7) (7x7x7)/Cube 1: Measurement grid: dx=5mm, dy=5mm, dz=5mm

Reference Value = 17.0 V/m

Peak SAR (extrapolated) = 0.322 W/kg

SAR(1 g) = 0.222 mW/g; SAR(10 g) = 0.150 mW/g

Maximum value of SAR (measured) = 0.256 mW/g



Date/Time: 2009/7/28 14:34:18

Test Laboratory: Bureau Veritas ADT

M06-GPRS850 TS1-Ch190 / Thick Bat

DUT: Portable Data Terminal ; Type: SE950

Communication System: PCS 850 ; Frequency: 836.6 MHz ; Duty Cycle: 1:8.3

Medium: MSL835 Medium parameters used: $f = 836.6$ MHz; $\sigma = 1$ mho/m; $\epsilon_r = 54.8$; $\rho = 1000$ kg/m³

Phantom section: Flat Section ; DUT test position : Body ; Modulation Type: GMSK / UL 1 time slot

Separation Distance : 0 mm (The bottom side of the EUT with leather to the Phantom)

DASY4 Configuration:

- Probe: EX3DV3 - SN3504 ; ConvF(9.71, 9.71, 9.71) ; Calibrated: 2009/1/21
- Sensor-Surface: 3mm (Mechanical Surface Detection)
- Electronics: DAE3 Sn510 ; Calibrated: 2009/1/21
- Phantom: SAM 12 ; Type: SAM V4.0; Serial: TP 1202
- Measurement SW: DASY4, V4.7 Build 80 ; Postprocessing SW: SEMCAD, V1.8 Build 186

Mid Channel 190/Area Scan (8x14x1): Measurement grid: dx=15mm, dy=15mm

Maximum value of SAR (measured) = 0.316 mW/g

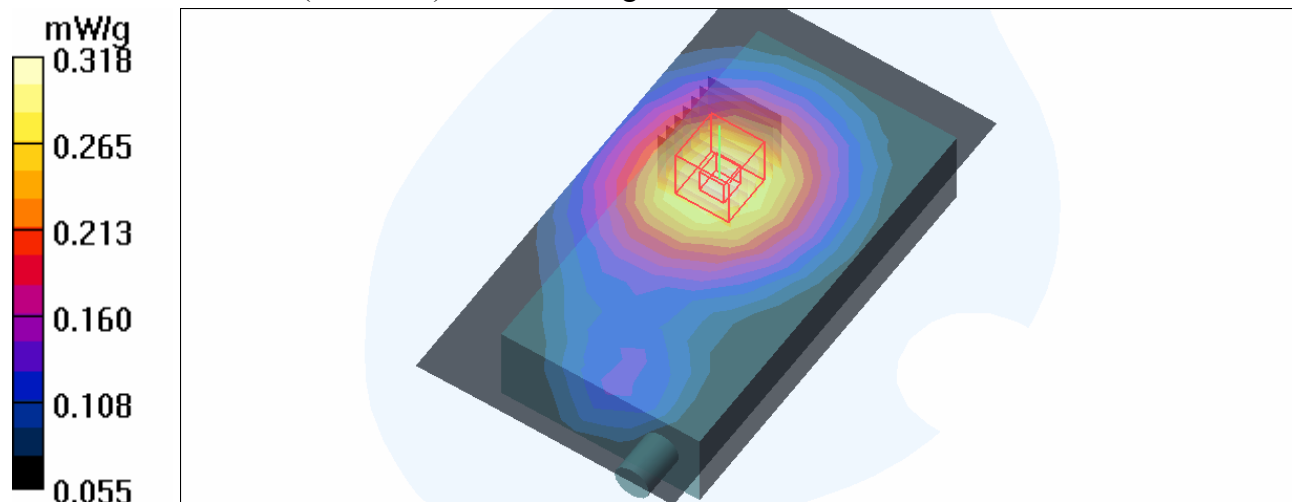
Mid Channel 190/Zoom Scan (7x7x7) (7x7x7)/Cube 0: Measurement grid: dx=5mm, dy=5mm, dz=5mm

Reference Value = 16.3 V/m

Peak SAR (extrapolated) = 0.369 W/kg

SAR(1 g) = 0.287 mW/g; SAR(10 g) = 0.209 mW/g

Maximum value of SAR (measured) = 0.318 mW/g



Date/Time: 2009/7/28 15:24:46

Test Laboratory: Bureau Veritas ADT

M07-GPRS850 TS2-Ch190

DUT: Portable Data Terminal ; Type: SE950

Communication System: PCS 850 ; Frequency: 836.6 MHz ; Duty Cycle: 1:4

Medium: MSL835 Medium parameters used: $f = 836.6$ MHz; $\sigma = 1$ mho/m; $\epsilon_r = 54.8$; $\rho = 1000$ kg/m³

Phantom section: Flat Section ; DUT test position : Body ; Modulation Type: GMSK / UL 2 time slots

Separation Distance : 0 mm (The bottom side of the EUT with leather to the Phantom)

DASY4 Configuration:

- Probe: EX3DV3 - SN3504 ; ConvF(9.71, 9.71, 9.71) ; Calibrated: 2009/1/21
- Sensor-Surface: 3mm (Mechanical Surface Detection)
- Electronics: DAE3 Sn510 ; Calibrated: 2009/1/21
- Phantom: SAM 12 ; Type: SAM V4.0; Serial: TP 1202
- Measurement SW: DASY4, V4.7 Build 80 ; Postprocessing SW: SEMCAD, V1.8 Build 186

Mid Channel 190/Area Scan (8x14x1): Measurement grid: dx=15mm, dy=15mm

Maximum value of SAR (measured) = 0.428 mW/g

Mid Channel 190/Zoom Scan (7x7x7) (7x7x7)/Cube 0: Measurement grid: dx=5mm, dy=5mm, dz=5mm

Reference Value = 18.7 V/m

Peak SAR (extrapolated) = 0.564 W/kg

SAR(1 g) = 0.388 mW/g; SAR(10 g) = 0.262 mW/g

Maximum value of SAR (measured) = 0.447 mW/g

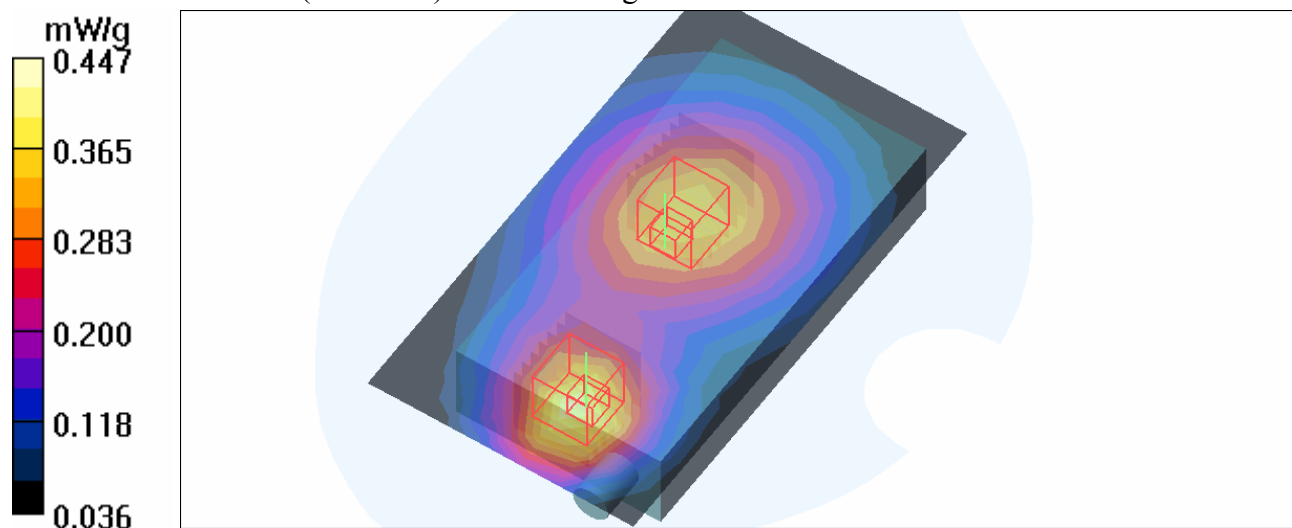
Mid Channel 190/Zoom Scan (7x7x7) (7x7x7)/Cube 1: Measurement grid: dx=5mm, dy=5mm, dz=5mm

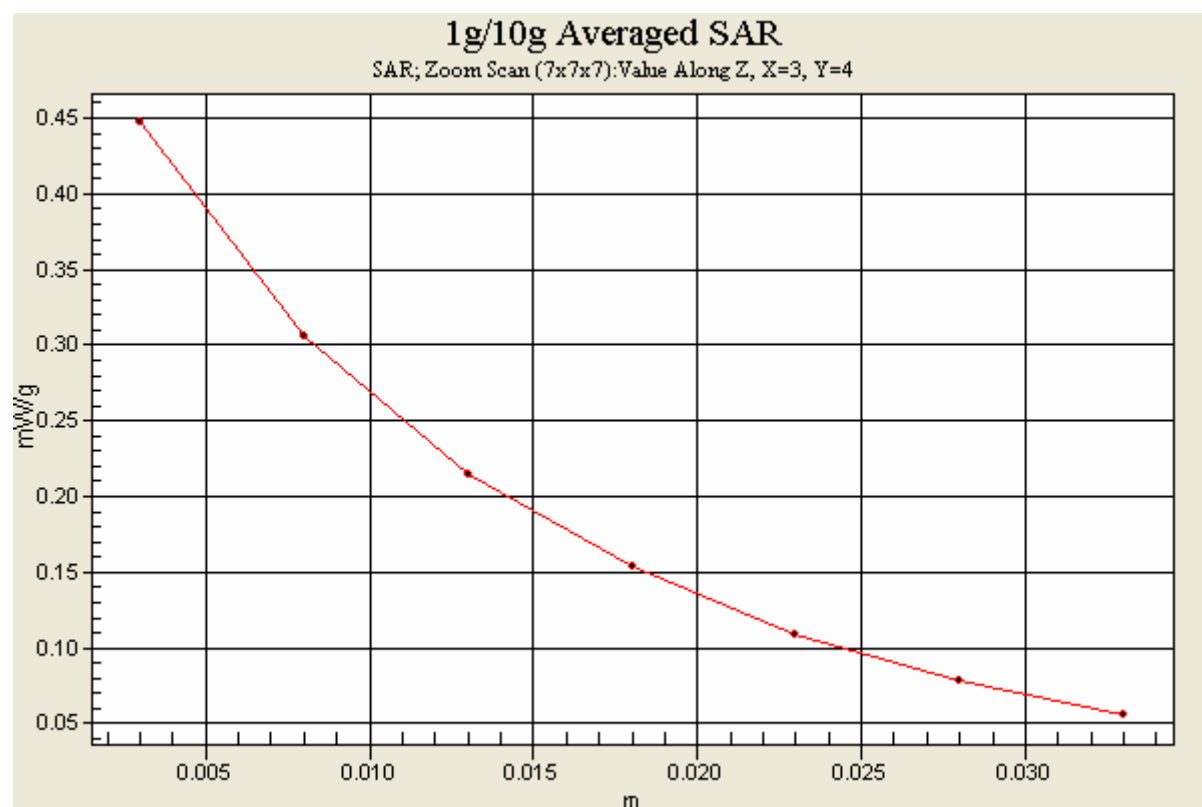
Reference Value = 18.7 V/m

Peak SAR (extrapolated) = 0.364 W/kg

SAR(1 g) = 0.279 mW/g; SAR(10 g) = 0.205 mW/g

Maximum value of SAR (measured) = 0.310 mW/g





Date/Time: 2009/7/28 16:06:37

Test Laboratory: Bureau Veritas ADT

M08-GPRS850 TS3-Ch190

DUT: Portable Data Terminal ; Type: SE950

Communication System: PCS 850 ; Frequency: 836.6 MHz ; Duty Cycle: 1:2.67

Medium: MSL835 Medium parameters used: $f = 836.6$ MHz; $\sigma = 1$ mho/m; $\epsilon_r = 54.8$; $\rho = 1000$ kg/m³

Phantom section: Flat Section ; DUT test position : Body ; Modulation Type: GMSK / UL 3 time slots

Separation Distance : 0 mm (The bottom side of the EUT with leather to the Phantom)

DASY4 Configuration:

- Probe: EX3DV3 - SN3504 ; ConvF(9.71, 9.71, 9.71) ; Calibrated: 2009/1/21
- Sensor-Surface: 3mm (Mechanical Surface Detection)
- Electronics: DAE3 Sn510 ; Calibrated: 2009/1/21
- Phantom: SAM 12 ; Type: SAM V4.0; Serial: TP 1202
- Measurement SW: DASY4, V4.7 Build 80 ; Postprocessing SW: SEMCAD, V1.8 Build 186

Mid Channel 190/Area Scan (8x14x1): Measurement grid: dx=15mm, dy=15mm

Maximum value of SAR (measured) = 0.361 mW/g

Mid Channel 190/Zoom Scan (7x7x7) (7x7x7)/Cube 0: Measurement grid: dx=5mm, dy=5mm, dz=5mm

Reference Value = 17.8 V/m

Peak SAR (extrapolated) = 0.361 W/kg

SAR(1 g) = 0.255 mW/g; SAR(10 g) = 0.177 mW/g

Maximum value of SAR (measured) = 0.290 mW/g

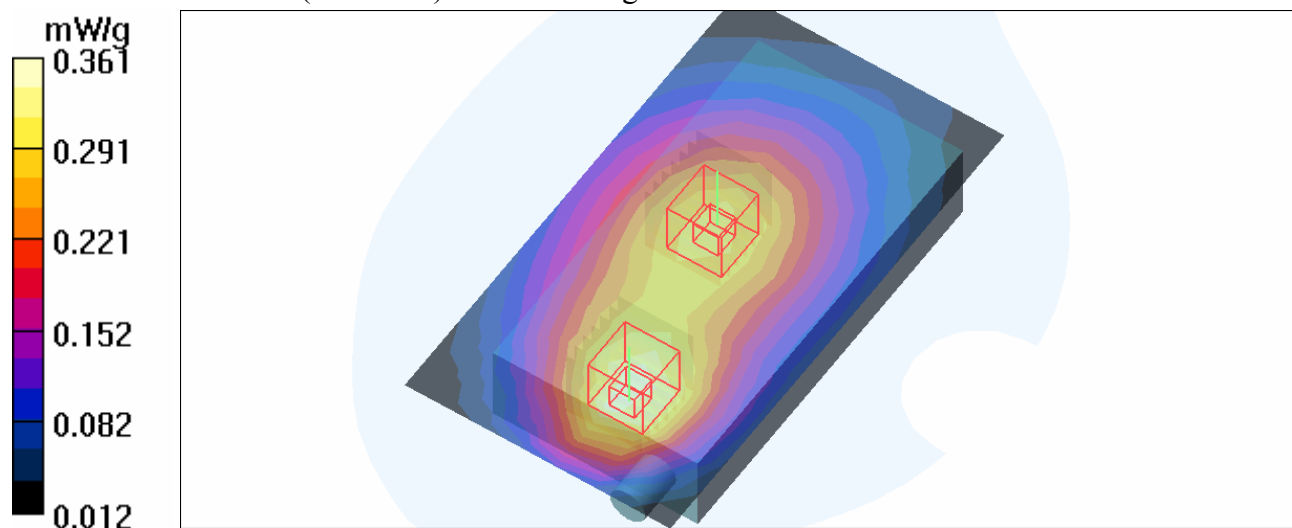
Mid Channel 190/Zoom Scan (7x7x7) (7x7x7)/Cube 1: Measurement grid: dx=5mm, dy=5mm, dz=5mm

Reference Value = 17.8 V/m

Peak SAR (extrapolated) = 0.279 W/kg

SAR(1 g) = 0.218 mW/g; SAR(10 g) = 0.167 mW/g

Maximum value of SAR (measured) = 0.241 mW/g



Date/Time: 2009/7/28 16:54:02

Test Laboratory: Bureau Veritas ADT

M09-GPRS850 TS4-Ch190

DUT: Portable Data Terminal ; Type: SE950

Communication System: PCS 850 ; Frequency: 836.6 MHz ; Duty Cycle: 1:2

Medium: MSL835 Medium parameters used: $f = 836.6$ MHz; $\sigma = 1$ mho/m; $\epsilon_r = 54.8$; $\rho = 1000$ kg/m³

Phantom section: Flat Section ; DUT test position : Body ; Modulation Type: GMSK / UL 4 time slots

Separation Distance : 0 mm (The bottom side of the EUT with leather to the Phantom)

DASY4 Configuration:

- Probe: EX3DV3 - SN3504 ; ConvF(9.71, 9.71, 9.71) ; Calibrated: 2009/1/21
- Sensor-Surface: 3mm (Mechanical Surface Detection)
- Electronics: DAE3 Sn510 ; Calibrated: 2009/1/21
- Phantom: SAM 12 ; Type: SAM V4.0; Serial: TP 1202
- Measurement SW: DASY4, V4.7 Build 80 ; Postprocessing SW: SEMCAD, V1.8 Build 186

Mid Channel 190/Area Scan (8x14x1): Measurement grid: dx=15mm, dy=15mm

Maximum value of SAR (measured) = 0.297 mW/g

Mid Channel 190/Zoom Scan (7x7x7) (7x7x7)/Cube 0: Measurement grid: dx=5mm, dy=5mm, dz=5mm

Reference Value = 16.2 V/m

Peak SAR (extrapolated) = 0.385 W/kg

SAR(1 g) = 0.265 mW/g; SAR(10 g) = 0.183 mW/g

Maximum value of SAR (measured) = 0.304 mW/g

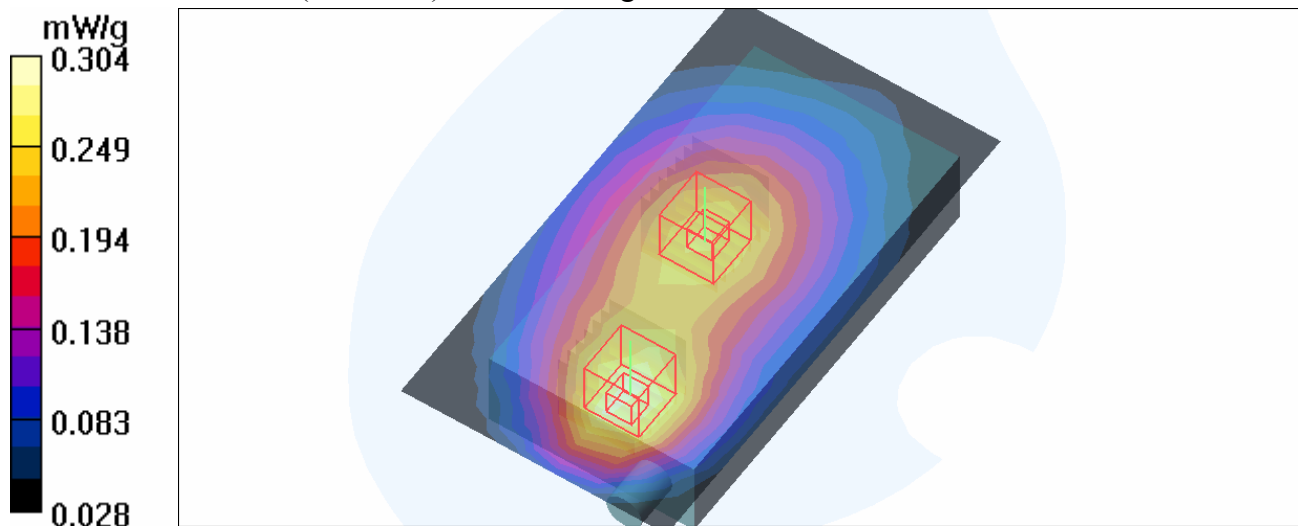
Mid Channel 190/Zoom Scan (7x7x7) (7x7x7)/Cube 1: Measurement grid: dx=5mm, dy=5mm, dz=5mm

Reference Value = 16.2 V/m

Peak SAR (extrapolated) = 0.294 W/kg

SAR(1 g) = 0.228 mW/g; SAR(10 g) = 0.172 mW/g

Maximum value of SAR (measured) = 0.252 mW/g



Date/Time: 2009/7/28 17:54:02

Test Laboratory: Bureau Veritas ADT

M10-E-GPRS850 TS1-Ch190

DUT: Portable Data Terminal ; Type: SE950

Communication System: PCS 850 ; Frequency: 836.6 MHz ; Duty Cycle: 1:8.3

Medium: MSL835 Medium parameters used: $f = 836.6$ MHz; $\sigma = 1$ mho/m; $\epsilon_r = 54.8$; $\rho = 1000$ kg/m³

Phantom section: Flat Section ; DUT test position : Body ; Modulation Type: 8PSK / UL 1 time slot

Separation Distance : 0 mm (The bottom side of the EUT with leather to the Phantom)

DASY4 Configuration:

- Probe: EX3DV3 - SN3504 ; ConvF(9.71, 9.71, 9.71) ; Calibrated: 2009/1/21
- Sensor-Surface: 3mm (Mechanical Surface Detection)
- Electronics: DAE3 Sn510 ; Calibrated: 2009/1/21
- Phantom: SAM 12 ; Type: SAM V4.0; Serial: TP 1202
- Measurement SW: DASY4, V4.7 Build 80 ; Postprocessing SW: SEMCAD, V1.8 Build 186

Mid Channel 190/Area Scan (8x14x1): Measurement grid: dx=15mm, dy=15mm

Maximum value of SAR (measured) = 0.061 mW/g

Mid Channel 190/Zoom Scan (7x7x7) (7x7x7)/Cube 0: Measurement grid: dx=5mm, dy=5mm, dz=5mm

Reference Value = 7.17 V/m

Peak SAR (extrapolated) = 0.078 W/kg

SAR(1 g) = 0.055 mW/g; SAR(10 g) = 0.038 mW/g

Maximum value of SAR (measured) = 0.062 mW/g

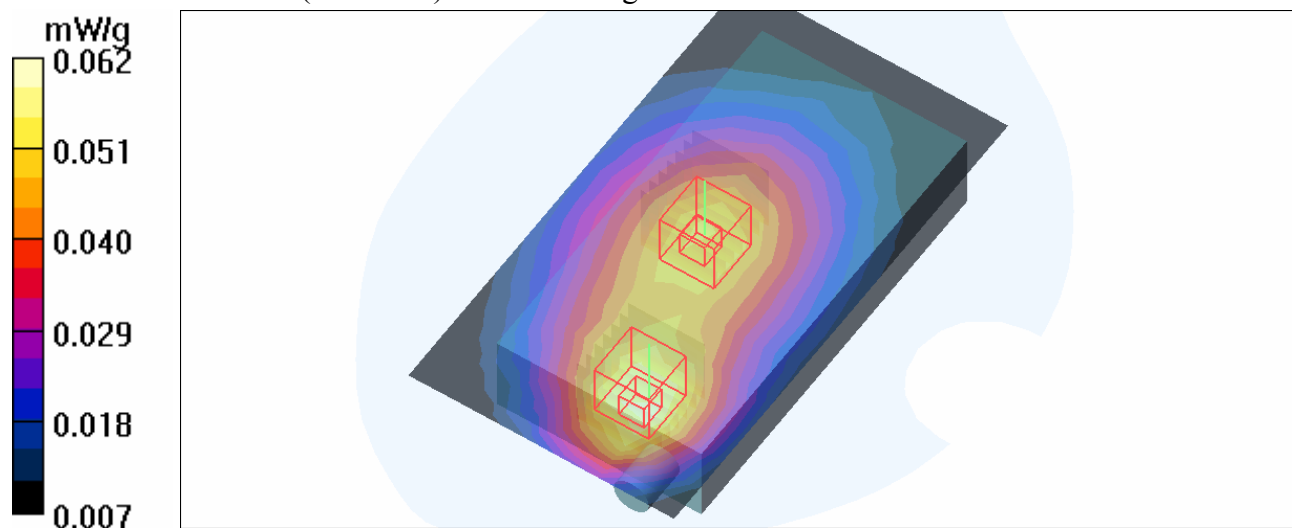
Mid Channel 190/Zoom Scan (7x7x7) (7x7x7)/Cube 1: Measurement grid: dx=5mm, dy=5mm, dz=5mm

Reference Value = 7.17 V/m

Peak SAR (extrapolated) = 0.062 W/kg

SAR(1 g) = 0.048 mW/g; SAR(10 g) = 0.037 mW/g

Maximum value of SAR (measured) = 0.053 mW/g



Date/Time: 2009/7/28 18:38:40

Test Laboratory: Bureau Veritas ADT

M11-E-GPRS850 TS2-Ch190

DUT: Portable Data Terminal ; Type: SE950

Communication System: PCS 850 ; Frequency: 836.6 MHz ; Duty Cycle: 1:4

Medium: MSL835 Medium parameters used: $f = 836.6$ MHz; $\sigma = 1$ mho/m; $\epsilon_r = 54.8$; $\rho = 1000$ kg/m³

Phantom section: Flat Section ; DUT test position : Body ; Modulation Type: 8PSK / UL 2 time slots

Separation Distance : 0 mm (The bottom side of the EUT with leather to the Phantom)

DASY4 Configuration:

- Probe: EX3DV3 - SN3504 ; ConvF(9.71, 9.71, 9.71) ; Calibrated: 2009/1/21
- Sensor-Surface: 3mm (Mechanical Surface Detection)
- Electronics: DAE3 Sn510 ; Calibrated: 2009/1/21
- Phantom: SAM 12 ; Type: SAM V4.0; Serial: TP 1202
- Measurement SW: DASY4, V4.7 Build 80 ; Postprocessing SW: SEMCAD, V1.8 Build 186

Mid Channel 190/Area Scan (8x14x1): Measurement grid: dx=15mm, dy=15mm

Maximum value of SAR (measured) = 0.077 mW/g

Mid Channel 190/Zoom Scan (7x7x7) (7x7x7)/Cube 0: Measurement grid: dx=5mm, dy=5mm, dz=5mm

Reference Value = 8.14 V/m

Peak SAR (extrapolated) = 0.100 W/kg

SAR(1 g) = 0.069 mW/g; SAR(10 g) = 0.048 mW/g

Maximum value of SAR (measured) = 0.079 mW/g

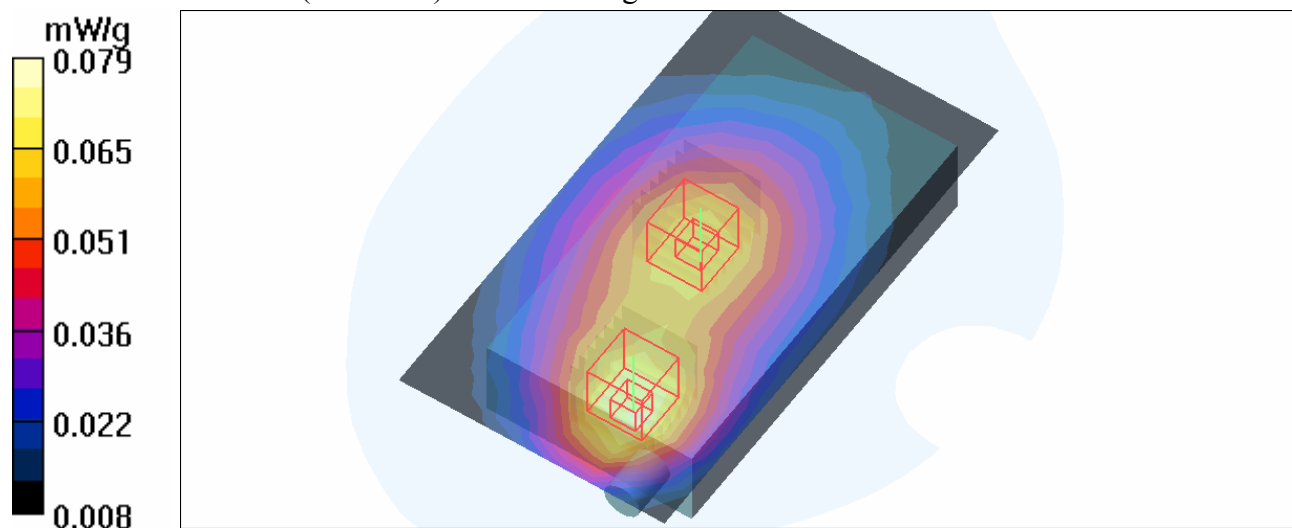
Mid Channel 190/Zoom Scan (7x7x7) (7x7x7)/Cube 1: Measurement grid: dx=5mm, dy=5mm, dz=5mm

Reference Value = 8.14 V/m

Peak SAR (extrapolated) = 0.077 W/kg

SAR(1 g) = 0.060 mW/g; SAR(10 g) = 0.046 mW/g

Maximum value of SAR (measured) = 0.066 mW/g



Date/Time: 2009/7/28 19:14:38

Test Laboratory: Bureau Veritas ADT

M12-E-GPRS850 TS3-Ch190

DUT: Portable Data Terminal ; Type: SE950

Communication System: PCS 850 ; Frequency: 836.6 MHz ; Duty Cycle: 1:2.67

Medium: MSL835 Medium parameters used: $f = 836.6$ MHz; $\sigma = 1$ mho/m; $\epsilon_r = 54.8$; $\rho = 1000$ kg/m³

Phantom section: Flat Section ; DUT test position : Body ; Modulation Type: 8PSK / UL 3 time slots

Separation Distance : 0 mm (The bottom side of the EUT with leather to the Phantom)

DASY4 Configuration:

- Probe: EX3DV3 - SN3504 ; ConvF(9.71, 9.71, 9.71) ; Calibrated: 2009/1/21
- Sensor-Surface: 3mm (Mechanical Surface Detection)
- Electronics: DAE3 Sn510 ; Calibrated: 2009/1/21
- Phantom: SAM 12 ; Type: SAM V4.0; Serial: TP 1202
- Measurement SW: DASY4, V4.7 Build 80 ; Postprocessing SW: SEMCAD, V1.8 Build 186

Mid Channel 190/Area Scan (8x14x1): Measurement grid: dx=15mm, dy=15mm

Maximum value of SAR (measured) = 0.070 mW/g

Mid Channel 190/Zoom Scan (7x7x7) (7x7x7)/Cube 0: Measurement grid: dx=5mm, dy=5mm, dz=5mm

Reference Value = 7.76 V/m

Peak SAR (extrapolated) = 0.092 W/kg

SAR(1 g) = 0.063 mW/g; SAR(10 g) = 0.043 mW/g

Maximum value of SAR (measured) = 0.072 mW/g

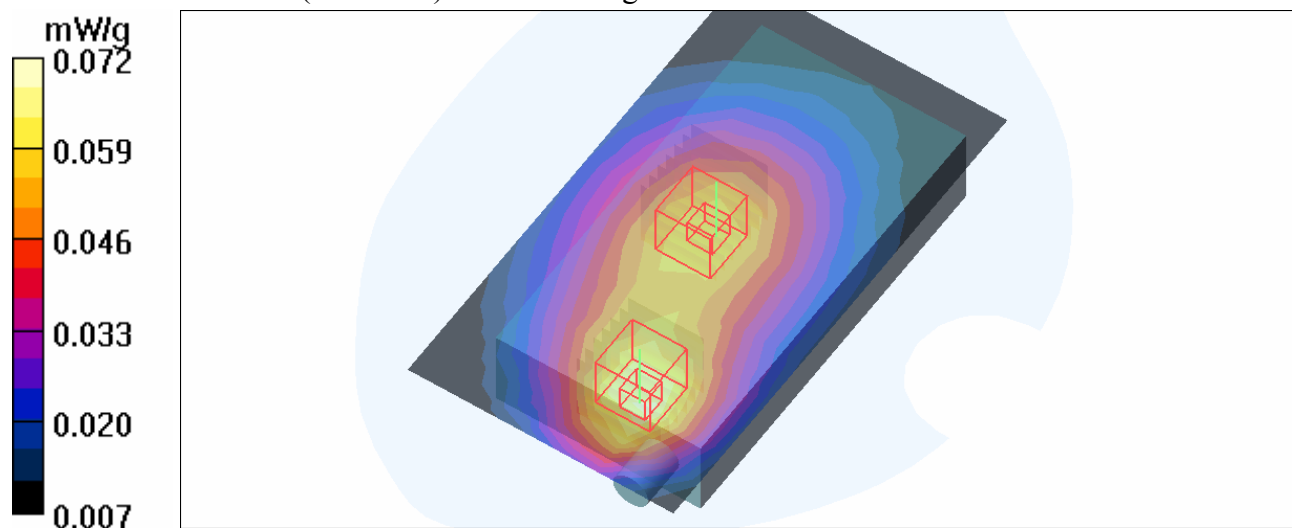
Mid Channel 190/Zoom Scan (7x7x7) (7x7x7)/Cube 1: Measurement grid: dx=5mm, dy=5mm, dz=5mm

Reference Value = 7.76 V/m

Peak SAR (extrapolated) = 0.070 W/kg

SAR(1 g) = 0.054 mW/g; SAR(10 g) = 0.041 mW/g

Maximum value of SAR (measured) = 0.060 mW/g



Date/Time: 2009/7/28 19:50:59

Test Laboratory: Bureau Veritas ADT

M13-E-GPRS850 TS4-Ch190

DUT: Portable Data Terminal ; Type: SE950

Communication System: PCS 850 ; Frequency: 836.6 MHz ; Duty Cycle: 1:2

Medium: MSL835 Medium parameters used: $f = 836.6$ MHz; $\sigma = 1$ mho/m; $\epsilon_r = 54.8$; $\rho = 1000$ kg/m³

Phantom section: Flat Section ; DUT test position : Body ; Modulation Type: 8PSK / UL 4 time slots

Separation Distance : 0 mm (The bottom side of the EUT with leather to the Phantom)

DASY4 Configuration:

- Probe: EX3DV3 - SN3504 ; ConvF(9.71, 9.71, 9.71) ; Calibrated: 2009/1/21
- Sensor-Surface: 3mm (Mechanical Surface Detection)
- Electronics: DAE3 Sn510 ; Calibrated: 2009/1/21
- Phantom: SAM 12 ; Type: SAM V4.0; Serial: TP 1202
- Measurement SW: DASY4, V4.7 Build 80 ; Postprocessing SW: SEMCAD, V1.8 Build 186

Mid Channel 190/Area Scan (8x14x1): Measurement grid: dx=15mm, dy=15mm

Maximum value of SAR (measured) = 0.056 mW/g

Mid Channel 190/Zoom Scan (7x7x7) (7x7x7)/Cube 0: Measurement grid: dx=5mm, dy=5mm, dz=5mm

Reference Value = 6.96 V/m

Peak SAR (extrapolated) = 0.075 W/kg

SAR(1 g) = 0.052 mW/g; SAR(10 g) = 0.036 mW/g

Maximum value of SAR (measured) = 0.059 mW/g

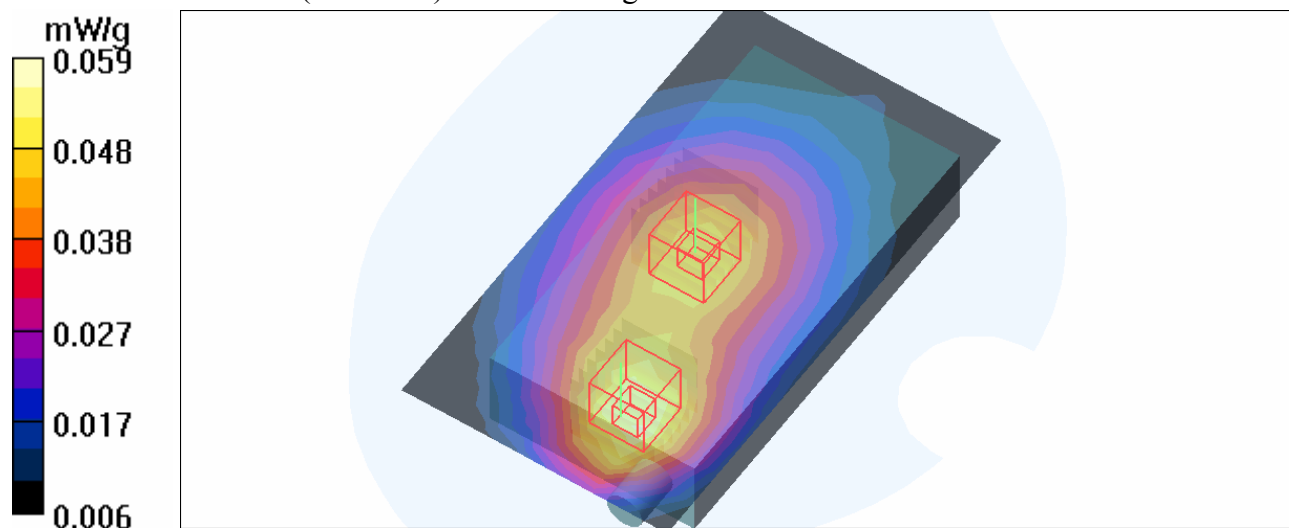
Mid Channel 190/Zoom Scan (7x7x7) (7x7x7)/Cube 1: Measurement grid: dx=5mm, dy=5mm, dz=5mm

Reference Value = 6.96 V/m

Peak SAR (extrapolated) = 0.058 W/kg

SAR(1 g) = 0.045 mW/g; SAR(10 g) = 0.034 mW/g

Maximum value of SAR (measured) = 0.050 mW/g



Date/Time: 2009/7/29 15:03:45

Test Laboratory: Bureau Veritas ADT

M14-GPRS1900 TS1-Ch661

DUT: Portable Data Terminal ; Type: SE950

Communication System: PCS 1900 ; Frequency: 1880 MHz ; Duty Cycle: 1:8.3

Medium: MSL1900 Medium parameters used: $f = 1880$ MHz; $\sigma = 1.54$ mho/m; $\epsilon_r = 53.7$; $\rho = 1000$ kg/m³

Phantom section: Flat Section ; DUT test position : Body ; Modulation Type: GMSK / UL 1 time slot

Separation Distance : 0 mm (The bottom side of the EUT with leather to the Phantom)

DASY4 Configuration:

- Probe: EX3DV3 - SN3504 ; ConvF(8.21, 8.21, 8.21) ; Calibrated: 2009/1/21
- Sensor-Surface: 3mm (Mechanical Surface Detection)
- Electronics: DAE3 Sn510 ; Calibrated: 2009/1/21
- Phantom: SAM 12 ; Type: SAM V4.0; Serial: TP 1202
- Measurement SW: DASY4, V4.7 Build 80 ; Postprocessing SW: SEMCAD, V1.8 Build 186

Mid Channel 661/Area Scan (8x14x1): Measurement grid: dx=15mm, dy=15mm

Maximum value of SAR (measured) = 0.077 mW/g

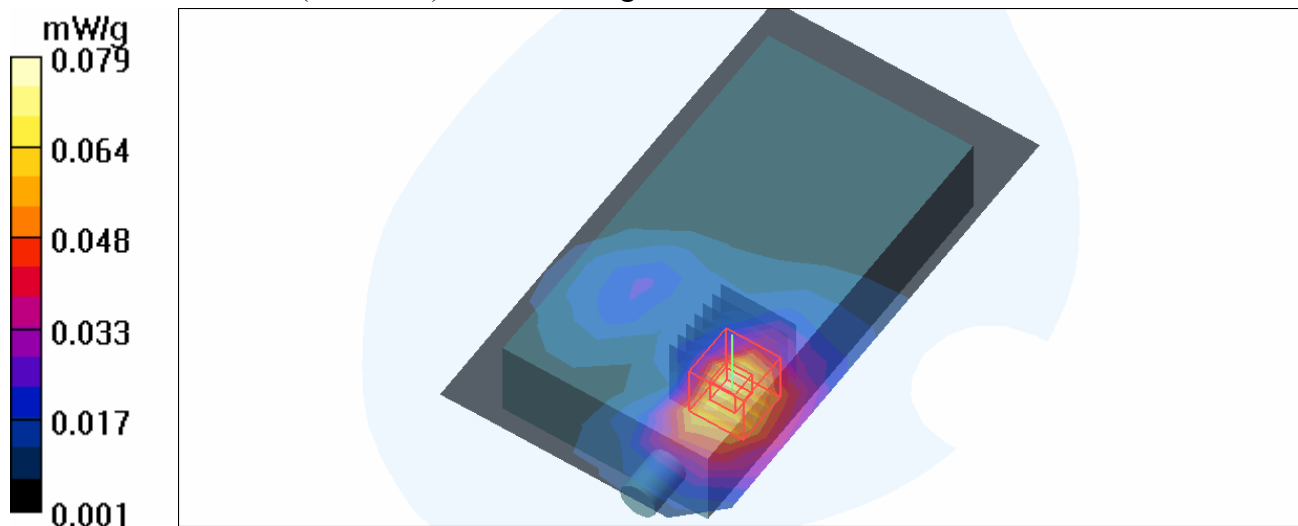
Mid Channel 661/Zoom Scan (7x7x7) (7x7x7)/Cube 0: Measurement grid: dx=5mm, dy=5mm, dz=5mm

Reference Value = 1.99 V/m

Peak SAR (extrapolated) = 0.107 W/kg

SAR(1 g) = 0.065 mW/g; SAR(10 g) = 0.039 mW/g

Maximum value of SAR (measured) = 0.079 mW/g



Date/Time: 2009/7/29 15:25:41

Test Laboratory: Bureau Veritas ADT

M15-GPRS1900 TS2-Ch661

DUT: Portable Data Terminal ; Type: SE950

Communication System: PCS 1900 ; Frequency: 1880 MHz ; Duty Cycle: 1:4

Medium: MSL1900 Medium parameters used: $f = 1880$ MHz; $\sigma = 1.54$ mho/m; $\epsilon_r = 53.7$; $\rho = 1000$ kg/m³

Phantom section: Flat Section ; DUT test position : Body ; Modulation Type: GMSK / UL 2 time slots

Separation Distance : 0 mm (The bottom side of the EUT with leather to the Phantom)

DASY4 Configuration:

- Probe: EX3DV3 - SN3504 ; ConvF(8.21, 8.21, 8.21) ; Calibrated: 2009/1/21
- Sensor-Surface: 3mm (Mechanical Surface Detection)
- Electronics: DAE3 Sn510 ; Calibrated: 2009/1/21
- Phantom: SAM 12 ; Type: SAM V4.0; Serial: TP 1202
- Measurement SW: DASY4, V4.7 Build 80 ; Postprocessing SW: SEMCAD, V1.8 Build 186

Mid Channel 661/Area Scan (8x14x1): Measurement grid: dx=15mm, dy=15mm

Maximum value of SAR (measured) = 0.100 mW/g

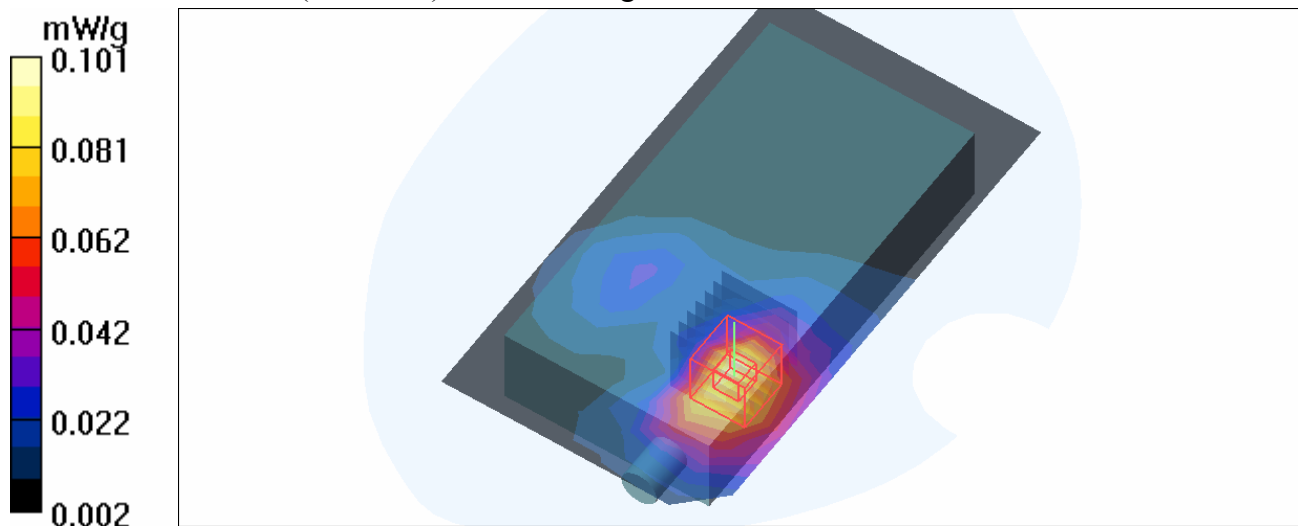
Mid Channel 661/Zoom Scan (7x7x7) (7x7x7)/Cube 0: Measurement grid: dx=5mm, dy=5mm, dz=5mm

Reference Value = 2.16 V/m

Peak SAR (extrapolated) = 0.136 W/kg

SAR(1 g) = 0.084 mW/g; SAR(10 g) = 0.050 mW/g

Maximum value of SAR (measured) = 0.101 mW/g



Date/Time: 2009/7/29 15:48:56

Test Laboratory: Bureau Veritas ADT

M16-GPRS1900 TS3-Ch661

DUT: Portable Data Terminal ; Type: SE950

Communication System: PCS 1900 ; Frequency: 1880 MHz ; Duty Cycle: 1:2.67

Medium: MSL1900 Medium parameters used: $f = 1880$ MHz; $\sigma = 1.54$ mho/m; $\epsilon_r = 53.7$; $\rho = 1000$ kg/m³

Phantom section: Flat Section ; DUT test position : Body ; Modulation Type: GMSK / UL 3 time slots

Separation Distance : 0 mm (The bottom side of the EUT with leather to the Phantom)

DASY4 Configuration:

- Probe: EX3DV3 - SN3504 ; ConvF(8.21, 8.21, 8.21) ; Calibrated: 2009/1/21
- Sensor-Surface: 3mm (Mechanical Surface Detection)
- Electronics: DAE3 Sn510 ; Calibrated: 2009/1/21
- Phantom: SAM 12 ; Type: SAM V4.0; Serial: TP 1202
- Measurement SW: DASY4, V4.7 Build 80 ; Postprocessing SW: SEMCAD, V1.8 Build 186

Mid Channel 661/Area Scan (8x14x1): Measurement grid: dx=15mm, dy=15mm

Maximum value of SAR (measured) = 0.095 mW/g

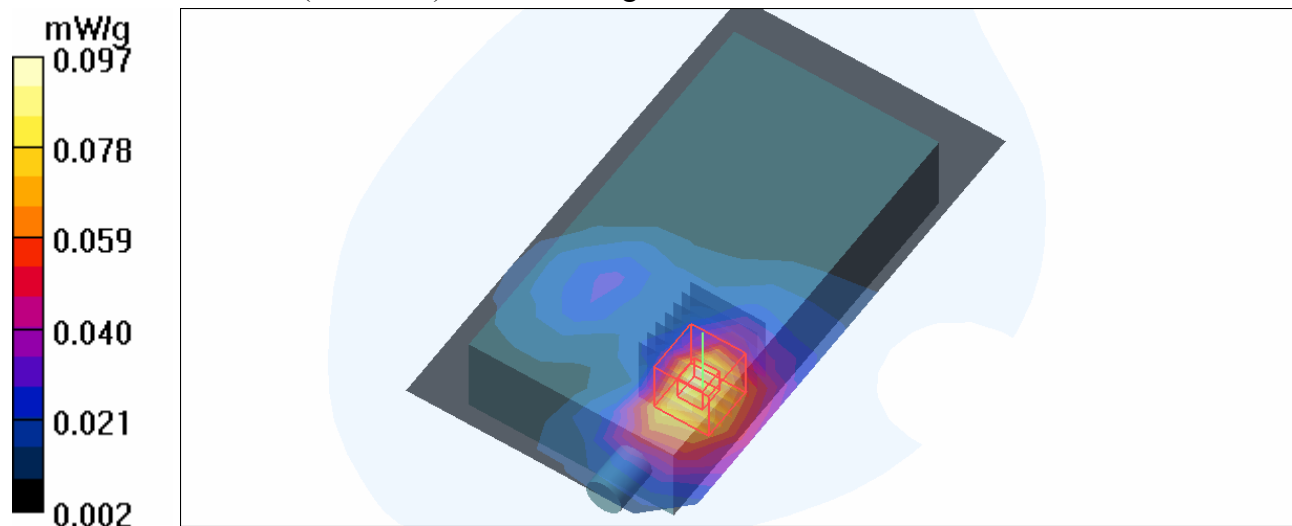
Mid Channel 661/Zoom Scan (7x7x7) (7x7x7)/Cube 0: Measurement grid: dx=5mm, dy=5mm, dz=5mm

Reference Value = 2.24 V/m

Peak SAR (extrapolated) = 0.134 W/kg

SAR(1 g) = 0.082 mW/g; SAR(10 g) = 0.048 mW/g

Maximum value of SAR (measured) = 0.097 mW/g



Date/Time: 2009/7/29 16:11:26

Test Laboratory: Bureau Veritas ADT

M17-GPRS1900 TS4-Ch661

DUT: Portable Data Terminal ; Type: SE950

Communication System: PCS 1900 ; Frequency: 1880 MHz ; Duty Cycle: 1:2

Medium: MSL1900 Medium parameters used: $f = 1880$ MHz; $\sigma = 1.54$ mho/m; $\epsilon_r = 53.7$; $\rho = 1000$ kg/m³

Phantom section: Flat Section ; DUT test position : Body ; Modulation Type: GMSK / UL 4 time slots

Separation Distance : 0 mm (The bottom side of the EUT with leather to the Phantom)

DASY4 Configuration:

- Probe: EX3DV3 - SN3504 ; ConvF(8.21, 8.21, 8.21) ; Calibrated: 2009/1/21
- Sensor-Surface: 3mm (Mechanical Surface Detection)
- Electronics: DAE3 Sn510 ; Calibrated: 2009/1/21
- Phantom: SAM 12 ; Type: SAM V4.0; Serial: TP 1202
- Measurement SW: DASY4, V4.7 Build 80 ; Postprocessing SW: SEMCAD, V1.8 Build 186

Mid Channel 661/Area Scan (8x14x1): Measurement grid: dx=15mm, dy=15mm

Maximum value of SAR (measured) = 0.081 mW/g

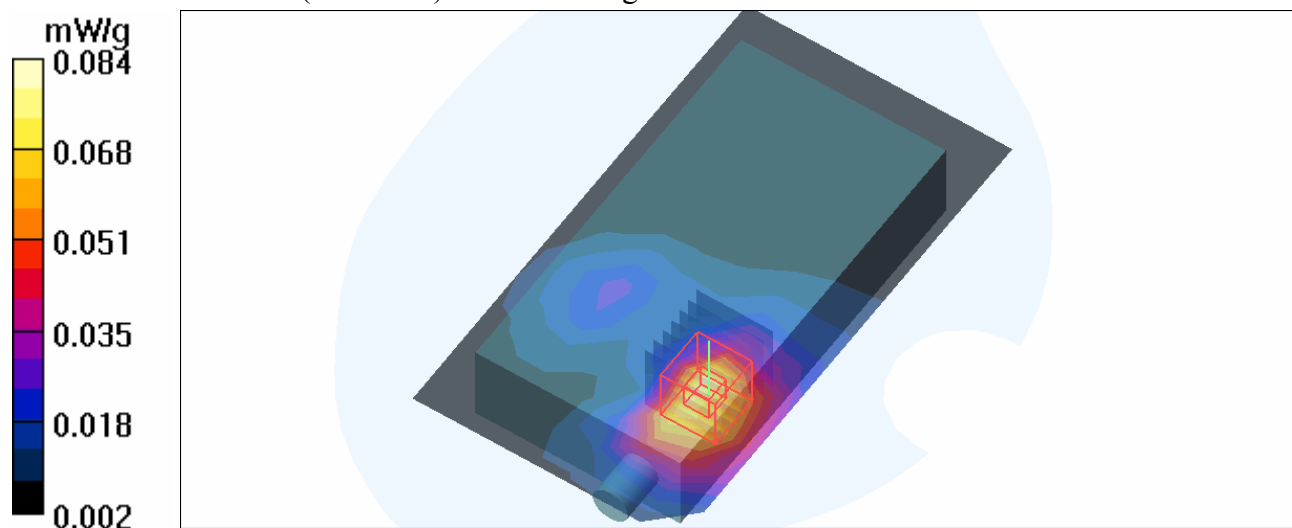
Mid Channel 661/Zoom Scan (7x7x7) (7x7x7)/Cube 0: Measurement grid: dx=5mm, dy=5mm, dz=5mm

Reference Value = 2.13 V/m

Peak SAR (extrapolated) = 0.113 W/kg

SAR(1 g) = 0.070 mW/g; SAR(10 g) = 0.042 mW/g

Maximum value of SAR (measured) = 0.084 mW/g



Date/Time: 2009/7/29 16:37:15

Test Laboratory: Bureau Veritas ADT

M18-E-GPRS1900 TS1-Ch661

DUT: Portable Data Terminal ; Type: SE950

Communication System: PCS 1900 ; Frequency: 1880 MHz ; Duty Cycle: 1:8.3

Medium: MSL1900 Medium parameters used: $f = 1880$ MHz; $\sigma = 1.54$ mho/m; $\epsilon_r = 53.7$; $\rho = 1000$ kg/m³

Phantom section: Flat Section ; DUT test position : Body ; Modulation Type: 8PSK / UL 1 time slot

Separation Distance : 0 mm (The bottom side of the EUT with leather to the Phantom)

DASY4 Configuration:

- Probe: EX3DV3 - SN3504 ; ConvF(8.21, 8.21, 8.21) ; Calibrated: 2009/1/21
- Sensor-Surface: 3mm (Mechanical Surface Detection)
- Electronics: DAE3 Sn510 ; Calibrated: 2009/1/21
- Phantom: SAM 12 ; Type: SAM V4.0; Serial: TP 1202
- Measurement SW: DASY4, V4.7 Build 80 ; Postprocessing SW: SEMCAD, V1.8 Build 186

Mid Channel 661/Area Scan (8x14x1): Measurement grid: dx=15mm, dy=15mm

Maximum value of SAR (measured) = 0.028 mW/g

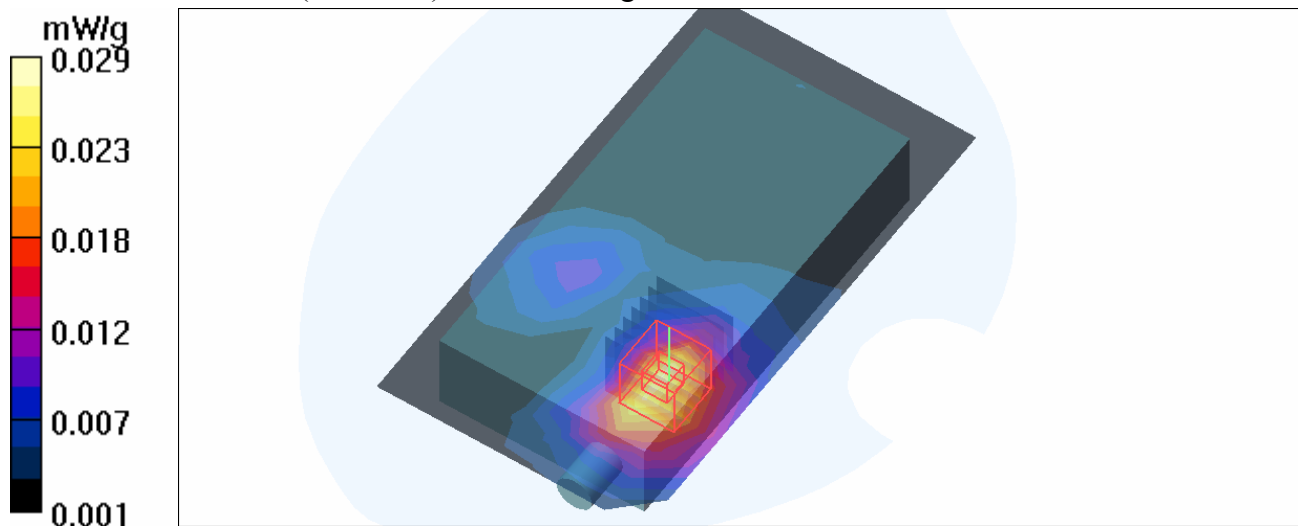
Mid Channel 661/Zoom Scan (7x7x7) (7x7x7)/Cube 0: Measurement grid: dx=5mm, dy=5mm, dz=5mm

Reference Value = 1.13 V/m

Peak SAR (extrapolated) = 0.040 W/kg

SAR(1 g) = 0.024 mW/g; SAR(10 g) = 0.014 mW/g

Maximum value of SAR (measured) = 0.029 mW/g



Date/Time: 2009/7/29 16:59:16

Test Laboratory: Bureau Veritas ADT

M19-E-GPRS1900 TS2-Ch661

DUT: Portable Data Terminal ; Type: SE950

Communication System: PCS 1900 ; Frequency: 1880 MHz ; Duty Cycle: 1:4

Medium: MSL1900 Medium parameters used: $f = 1880$ MHz; $\sigma = 1.54$ mho/m; $\epsilon_r = 53.7$; $\rho = 1000$ kg/m³

Phantom section: Flat Section ; DUT test position : Body ; Modulation Type: 8PSK / UL 2 time slots

Separation Distance : 0 mm (The bottom side of the EUT with leather to the Phantom)

DASY4 Configuration:

- Probe: EX3DV3 - SN3504 ; ConvF(8.21, 8.21, 8.21) ; Calibrated: 2009/1/21
- Sensor-Surface: 3mm (Mechanical Surface Detection)
- Electronics: DAE3 Sn510 ; Calibrated: 2009/1/21
- Phantom: SAM 12 ; Type: SAM V4.0; Serial: TP 1202
- Measurement SW: DASY4, V4.7 Build 80 ; Postprocessing SW: SEMCAD, V1.8 Build 186

Mid Channel 661/Area Scan (8x14x1): Measurement grid: dx=15mm, dy=15mm

Maximum value of SAR (measured) = 0.055 mW/g

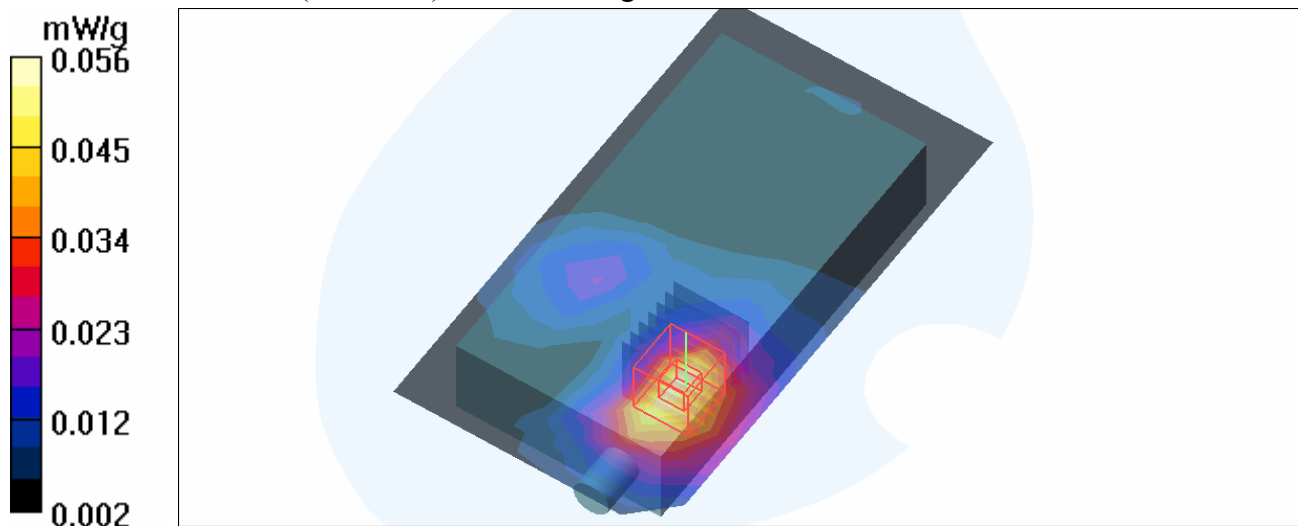
Mid Channel 661/Zoom Scan (7x7x7) (7x7x7)/Cube 0: Measurement grid: dx=5mm, dy=5mm, dz=5mm

Reference Value = 1.95 V/m

Peak SAR (extrapolated) = 0.075 W/kg

SAR(1 g) = 0.047 mW/g; SAR(10 g) = 0.028 mW/g

Maximum value of SAR (measured) = 0.056 mW/g



Date/Time: 2009/7/29 17:20:57

Test Laboratory: Bureau Veritas ADT

M20-E-GPRS1900 TS3-Ch661

DUT: Portable Data Terminal ; Type: SE950

Communication System: PCS 1900 ; Frequency: 1880 MHz ; Duty Cycle: 1:2.67

Medium: MSL1900 Medium parameters used: $f = 1880$ MHz; $\sigma = 1.54$ mho/m; $\epsilon_r = 53.7$; $\rho = 1000$ kg/m³

Phantom section: Flat Section ; DUT test position : Body ; Modulation Type: 8PSK / UL 3 time slots

Separation Distance : 0 mm (The bottom side of the EUT with leather to the Phantom)

DASY4 Configuration:

- Probe: EX3DV3 - SN3504 ; ConvF(8.21, 8.21, 8.21) ; Calibrated: 2009/1/21
- Sensor-Surface: 3mm (Mechanical Surface Detection)
- Electronics: DAE3 Sn510 ; Calibrated: 2009/1/21
- Phantom: SAM 12 ; Type: SAM V4.0; Serial: TP 1202
- Measurement SW: DASY4, V4.7 Build 80 ; Postprocessing SW: SEMCAD, V1.8 Build 186

Mid Channel 661/Area Scan (8x14x1): Measurement grid: dx=15mm, dy=15mm

Maximum value of SAR (measured) = 0.080 mW/g

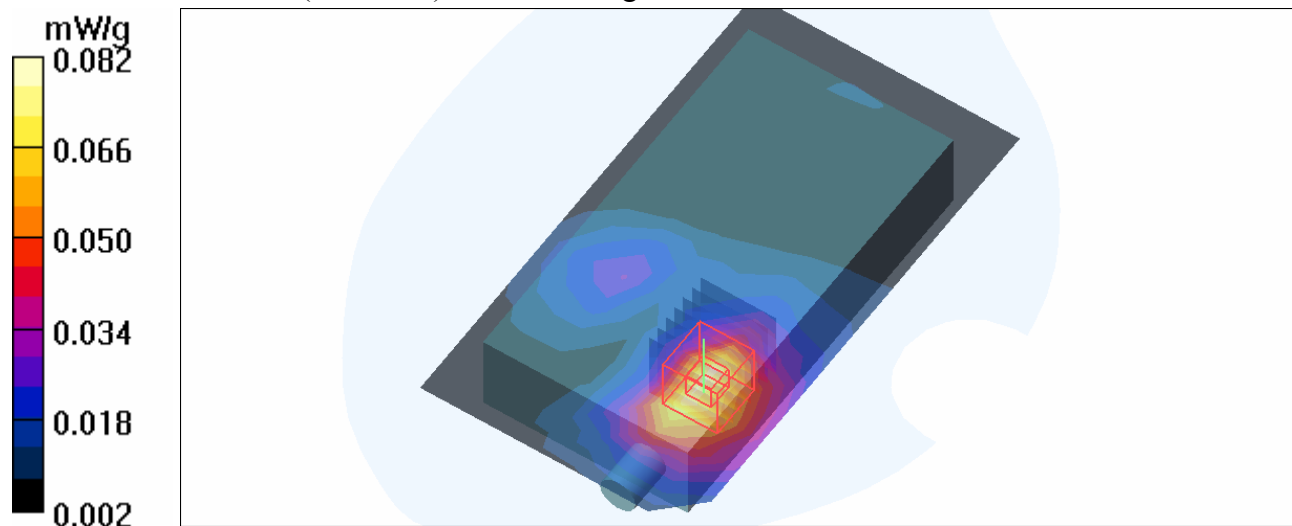
Mid Channel 661/Zoom Scan (7x7x7) (7x7x7)/Cube 0: Measurement grid: dx=5mm, dy=5mm, dz=5mm

Reference Value = 2.34 V/m

Peak SAR (extrapolated) = 0.113 W/kg

SAR(1 g) = 0.069 mW/g; SAR(10 g) = 0.041 mW/g

Maximum value of SAR (measured) = 0.082 mW/g



Date/Time: 2009/7/29 17:44:57

Test Laboratory: Bureau Veritas ADT

M21-E-GPRS1900 TS4-Ch661

DUT: Portable Data Terminal ; Type: SE950

Communication System: PCS 1900 ; Frequency: 1880 MHz ; Duty Cycle: 1:2

Medium: MSL1900 Medium parameters used: $f = 1880$ MHz; $\sigma = 1.54$ mho/m; $\epsilon_r = 53.7$; $\rho = 1000$ kg/m³

Phantom section: Flat Section ; DUT test position : Body ; Modulation Type: 8PSK / UL 2 time slots

Separation Distance : 0 mm (The bottom side of the EUT with leather to the Phantom)

DASY4 Configuration:

- Probe: EX3DV3 - SN3504 ; ConvF(8.21, 8.21, 8.21) ; Calibrated: 2009/1/21
- Sensor-Surface: 3mm (Mechanical Surface Detection)
- Electronics: DAE3 Sn510 ; Calibrated: 2009/1/21
- Phantom: SAM 12 ; Type: SAM V4.0; Serial: TP 1202
- Measurement SW: DASY4, V4.7 Build 80 ; Postprocessing SW: SEMCAD, V1.8 Build 186

Mid Channel 661/Area Scan (8x14x1): Measurement grid: dx=15mm, dy=15mm

Maximum value of SAR (measured) = 0.069 mW/g

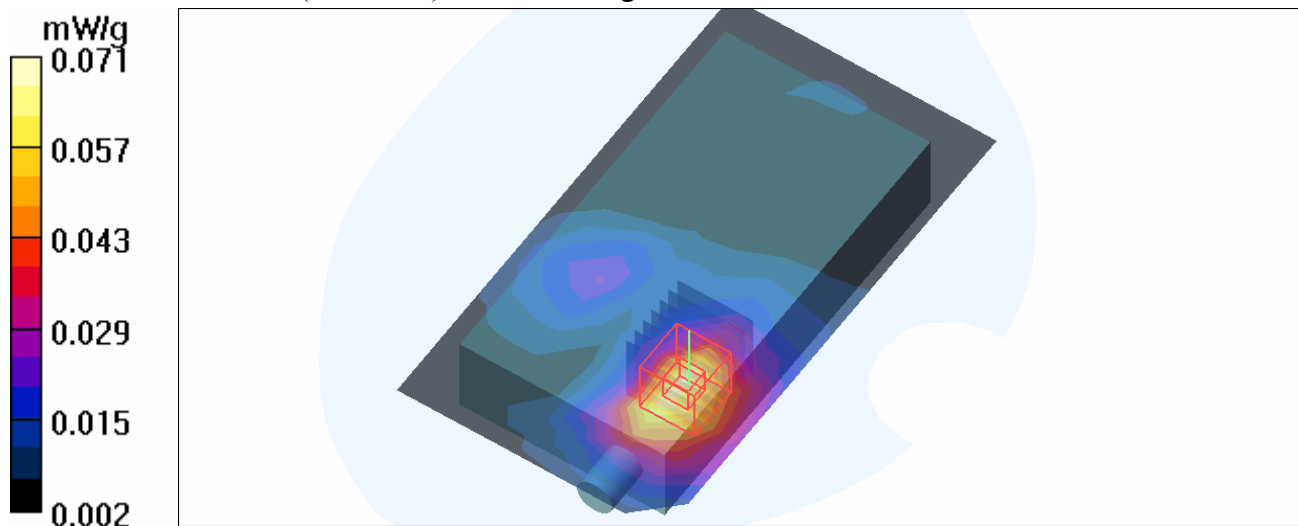
Mid Channel 661/Zoom Scan (7x7x7) (7x7x7)/Cube 0: Measurement grid: dx=5mm, dy=5mm, dz=5mm

Reference Value = 2.22 V/m

Peak SAR (extrapolated) = 0.096 W/kg

SAR(1 g) = 0.059 mW/g; SAR(10 g) = 0.036 mW/g

Maximum value of SAR (measured) = 0.071 mW/g



Date/Time: 2009/7/28 09:59:38

Test Laboratory: Bureau Veritas ADT

System Validation Check-MSL 835MHz

DUT: Dipole 850 MHz ; Type: D835V2 ; Serial: 4d021 ; Test Frequency: 835 MHz

Communication System: CW ; Frequency: 835 MHz; Duty Cycle: 1:1; Modulation type: CW
 Medium: MSL835; Medium parameters used: $f = 835 \text{ MHz}$; $\sigma = 1 \text{ mho/m}$; $\epsilon_r = 54.8$; $\rho = 1000 \text{ kg/m}^3$;
 Liquid level : 152 mm
 Phantom section: Flat Section ; Separation distance : 15 mm (The feetpoint of the dipole to the Phantom)
 Air temp. : 23.3 degrees ; Liquid temp. : 22.4 degrees

DASY4 Configuration:

- Probe: EX3DV3 - SN3504 ; ConvF(9.71, 9.71, 9.71) ; Calibrated: 2009/1/21
- Sensor-Surface: 3mm (Mechanical Surface Detection)
- Electronics: DAE3 Sn510; Calibrated: 2009/1/21
- Phantom: SAM 12; Type: SAM V4.0; Serial: TP 1202
- Measurement SW: DASY4, V4.7 Build 80; Postprocessing SW: SEMCAD, V1.8 Build 186

d=15mm, Pin=250mW/Area Scan (7x9x1): Measurement grid: dx=15mm, dy=15mm
 Maximum value of SAR (measured) = 2.63 mW/g

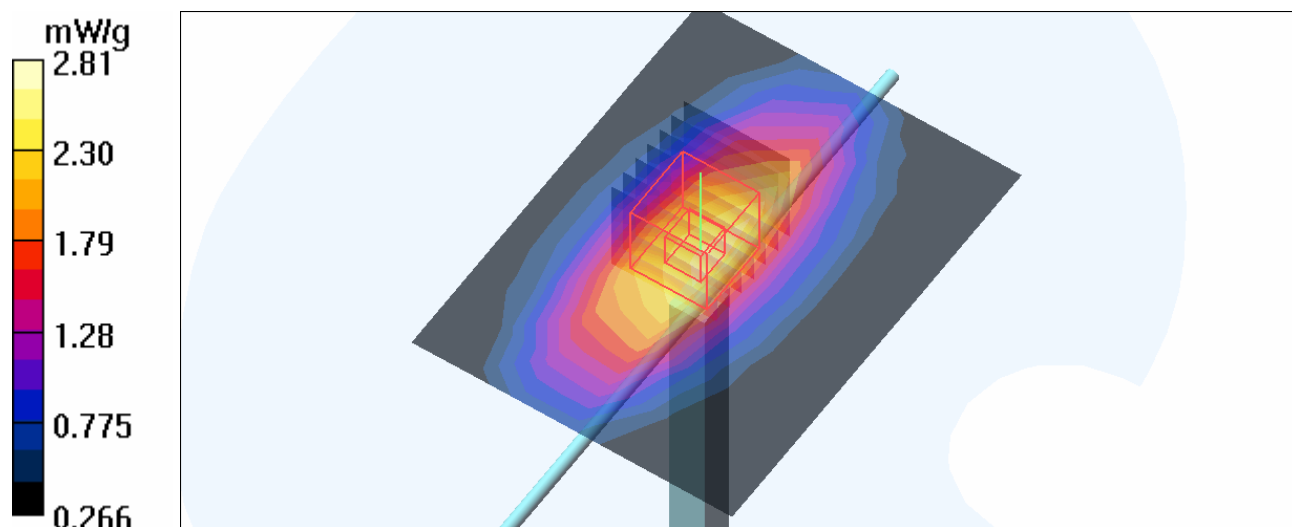
d=15mm, Pin=250mW/Zoom Scan (7x7x7) (7x7x7)/Cube 0: Measurement grid: dx=5mm, dy=5mm, dz=5mm

Reference Value = 52.3 V/m; Power Drift = -0.134 dB

Peak SAR (extrapolated) = 3.59 W/kg

SAR(1 g) = 2.41 mW/g; SAR(10 g) = 1.57 mW/g

Maximum value of SAR (measured) = 2.81 mW/g



Date/Time: 2009/7/29 11:18:53

Test Laboratory: Bureau Veritas ADT

System Validation Check-MSL 1900MHz

DUT: Dipole 1900 MHz ; Type: D1900V2 ; Serial: 5d022 ; Test Frequency: 1900 MHz

Communication System: CW ; Frequency: 1900 MHz; Duty Cycle: 1:1; Modulation type: CW
 Medium: MSL1900; Medium parameters used: $f = 1900$ MHz; $\sigma = 1.56$ mho/m; $\epsilon_r = 53.7$; $\rho = 1000$ kg/m³ ; Liquid level : 150 mm
 Phantom section: Flat Section ; Separation distance : 10 mm (The feetpoint of the dipole to the Phantom)
 Air temp. : 23.1 degrees ; Liquid temp. : 22.0 degrees

DASY4 Configuration:

- Probe: EX3DV3 - SN3504 ; ConvF(8.21, 8.21, 8.21) ; Calibrated: 2009/1/21
- Sensor-Surface: 3mm (Mechanical Surface Detection)
- Electronics: DAE3 Sn510; Calibrated: 2009/1/21
- Phantom: SAM 12; Type: SAM V4.0; Serial: TP 1202
- Measurement SW: DASY4, V4.7 Build 80; Postprocessing SW: SEMCAD, V1.8 Build 186

d=10mm, Pin=250mW/Area Scan (7x7x1): Measurement grid: dx=15mm, dy=15mm
 Maximum value of SAR (measured) = 12.1 mW/g

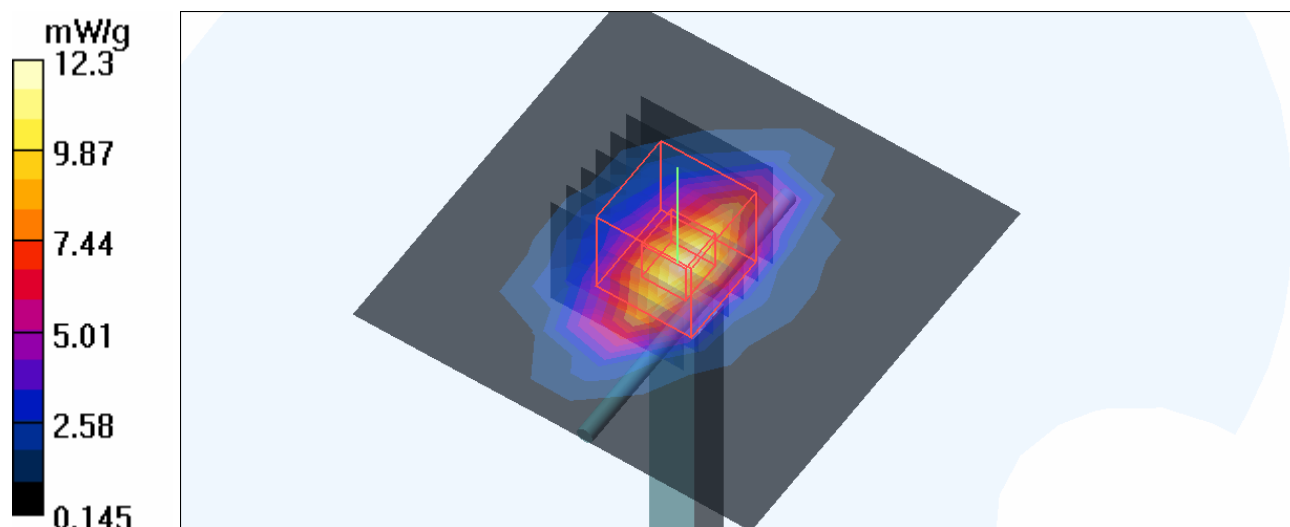
d=10mm, Pin=250mW/Zoom Scan (7x7x7) (7x7x7)/Cube 0: Measurement grid: dx=5mm, dy=5mm, dz=5mm

Reference Value = 89.4 V/m; Power Drift = -0.094 dB

Peak SAR (extrapolated) = 17.8 W/kg

SAR(1 g) = 9.57 mW/g; SAR(10 g) = 5.06 mW/g

Maximum value of SAR (measured) = 12.3 mW/g



APPENDIX B: ADT SAR MEASUREMENT SYSTEM



APPENDIX C: PHOTOGRAPHS OF SYSTEM VALIDATION

