

Annex A: Photographs of the Test Set-up

Photo 1: Radiated Emission



Photo 2: Radiated Emission

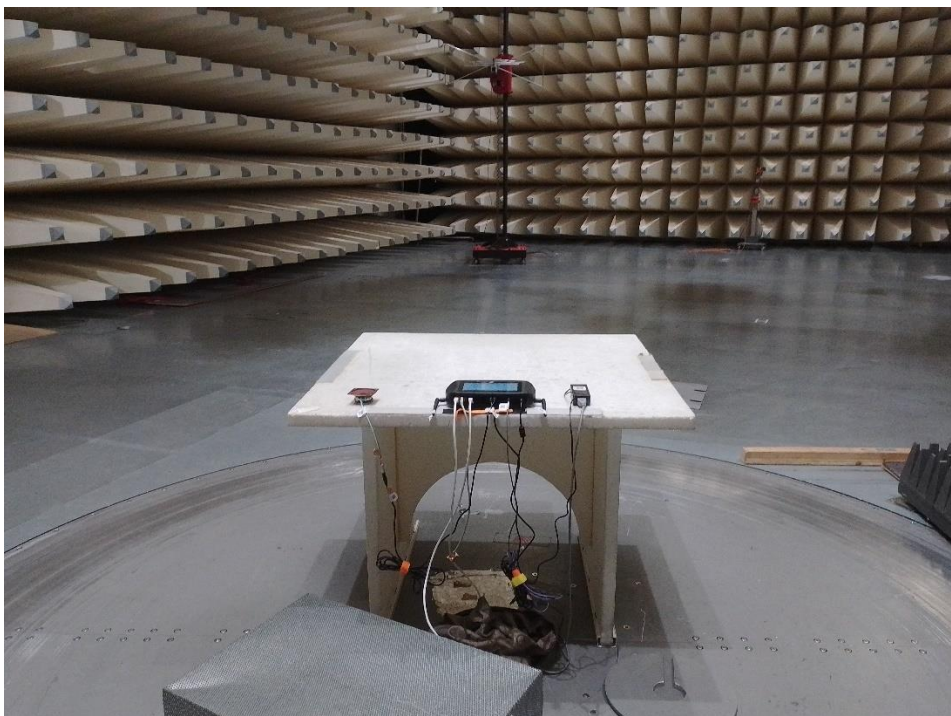
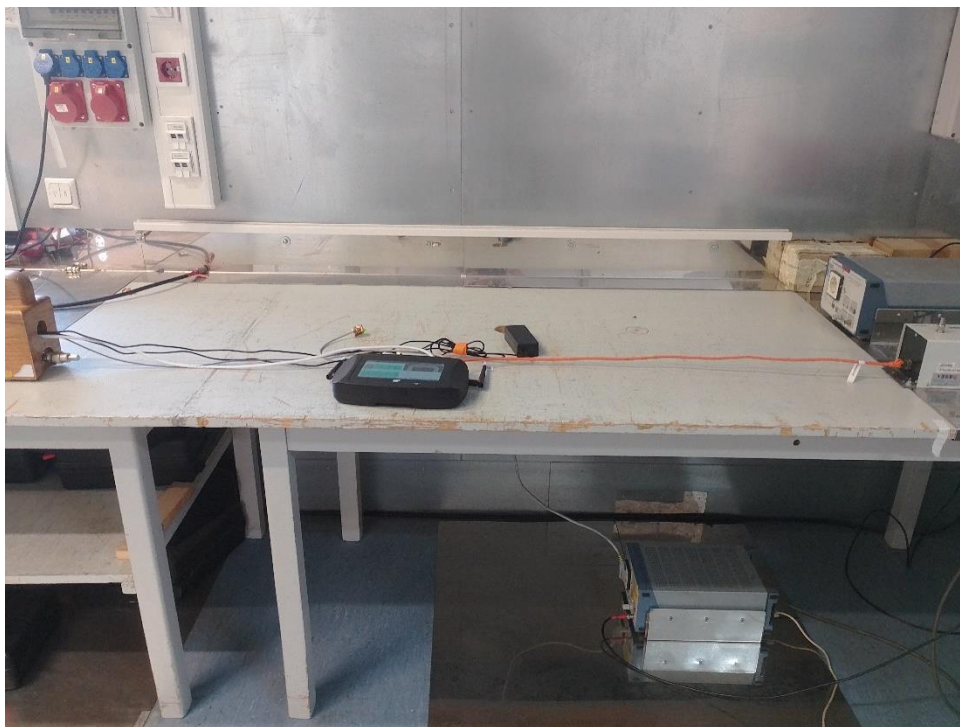


Photo 3: Conducted Emission



Annex B: External Photographs of the EUT

Photo 1:



Photo 2:



Mean Well Order No.: **GST60A24-P1J**
AC-DC SWITCHING ADAPTER
 REGULATED DC OUTPUT VOLTAGE (V) 24V (0.5% REG. @ 100% LOAD)
 MODEL NO. (W) 9-PIN 60W 24V 2.5A GST60A24
 INPUT VOLTAGE (V) 100V-240V 50/60Hz POWER CONSUMPTION (W) 60W
 OUTPUT CURRENT (A) 2.5A (0.5% REG. @ 100% LOAD)

The product is designed to be used in a safe and reliable manner. It is not intended for use in hazardous environments. The user should read the instructions carefully before using the product. The product is not to be used in a way that may cause fire, explosion, or other safety hazards. The user should follow the instructions for use and the safety warnings. The product is not to be used in a way that may cause damage to the product or other equipment. The user should follow the instructions for use and the safety warnings.

www.meanwell.com
 BS 136320 Part 1V
 IEC 60950-1 LPS

66.062

8/06 SC48234057

A close-up photograph of a black cable with a gold-colored SMA (SubMiniature version A) connector. The connector is a cylindrical metal piece with a central pin and a threaded outer shell. It is plugged into a matching gold-colored SMA port on a black plastic device. The background is a plain, light-colored surface.

Photo 5:



Annex C: Internal Photographs of the EUT

Photo 1:

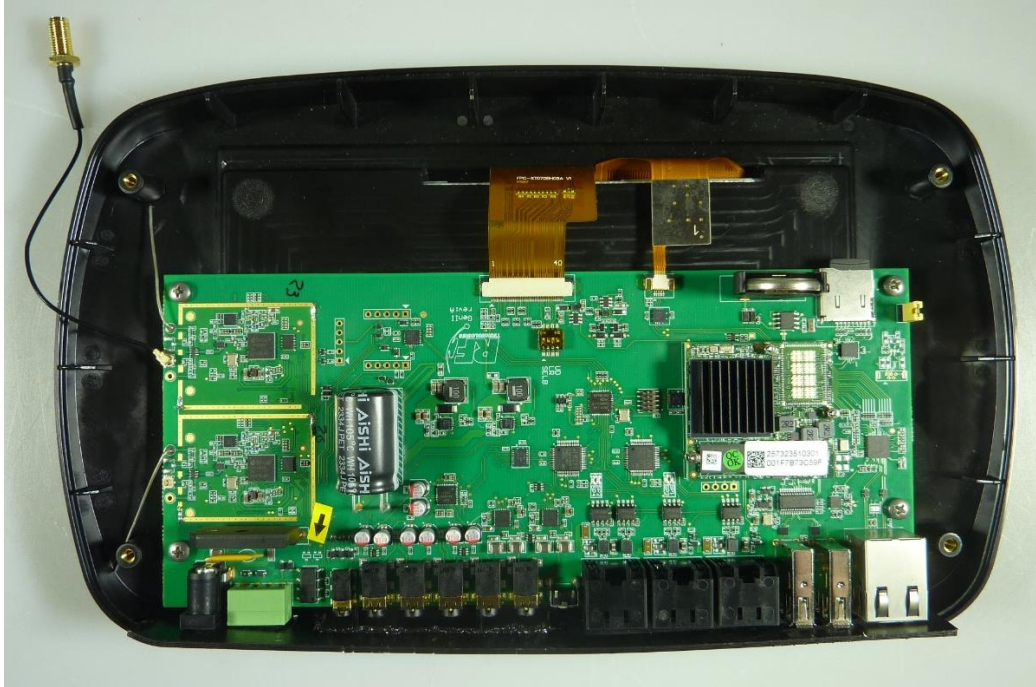


Photo 2:



Photo 3:

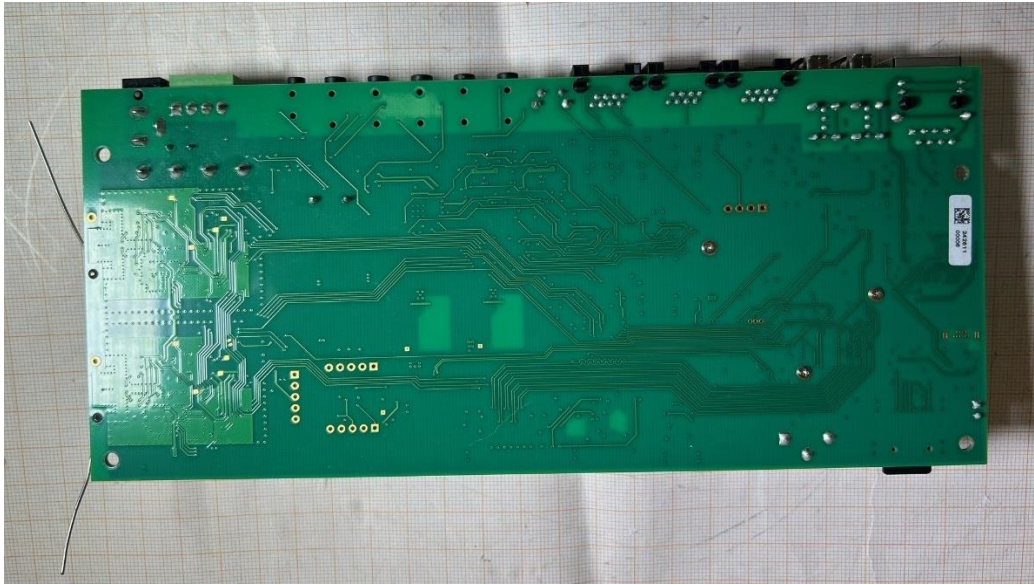


Photo 4:

