



1:24

2.4GHz



LOTUS T125

Use The Manual

## Caution

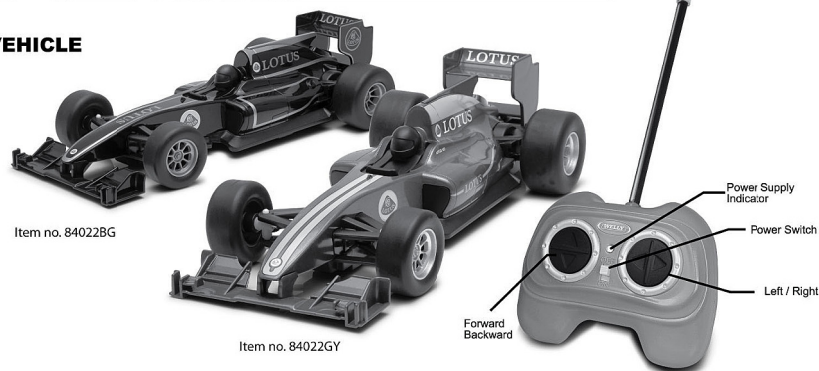
- Do not combine the use of new and old batteries.
- Do not combine the use of different types of batteries.
- Make sure the batteries are installed with the correct polarity in the battery compartment.
- Operate the vehicle on smooth surface. Do not operate through puddles of water, on sand, thick carpet or dusty environment that will damage the vehicle and electronic parts.
- Do not operate the vehicle with the same frequency of other player in the same area that will interfere the frequency and make the vehicle out of control.
- Do not store the transmitter and vehicle in a location of high temperature or high humidity. Do not store the product under direct sunlight.
- Do not attempt to disassemble or solder the transmitter and vehicle.
- Non-rechargeable batteries are not to be recharged.
- Rechargeable batteries are only to be charged under adult supervision.



## Content

SCALED  
RC MODEL

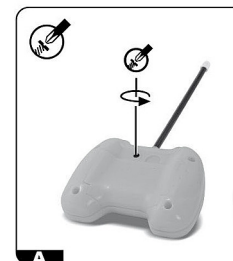
## VEHICLE



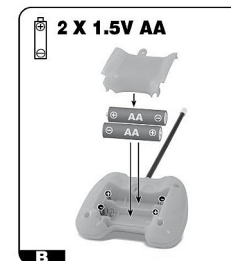
TRANSMITTER

## Operation

PLEASE KEEP THESE INSTRUCTIONS  
FOR FUTURE REFERENCE AS THEY  
CONTAIN IMPORTANT INFORMATION



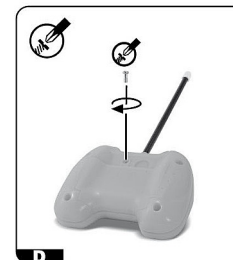
A



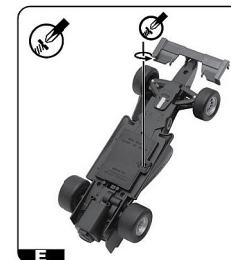
B



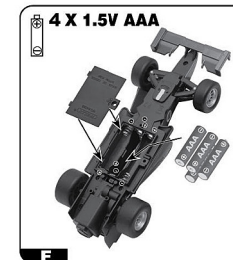
C



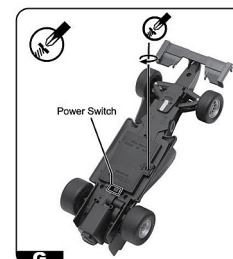
D



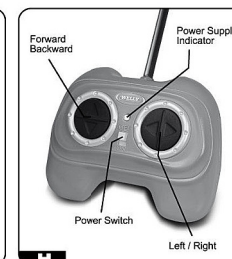
E



F

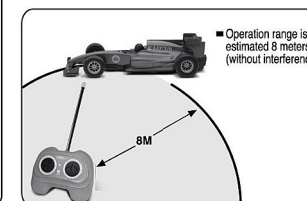


G



H

## Remarks



## Warning

- The supply terminals are not to be short-circuited.
- Avoid water damage to transmitter and vehicle. If they get wet, stop operating immediately and wait until they completely dry.
- Do not dispose batteries in fire that may cause explosion.
- If liquid leaking from the batteries stick to your skin or clothes, wash off immediately. If liquid get into your eyes, wash your eyes with distilled water and consult a physician immediately.
- Rechargeable batteries are to be removed from the toy before being charged.
- Exhausted batteries are to be removed from the toy.

CE  
RoHS

## WARNING:

CHOKING HAZARD - Small parts.  
Not for children under 3 years.

This device complies with part 15 of the FCC Rules. Operation is subject to the following two conditions:  
(1) This device may not cause harmful interference, and  
(2) this device must accept any interference received, including interference that may cause undesired operation.

Changes or modifications not expressly approved by the party responsible for compliance could void the user's authority to operate the equipment