

## 1) How does this device operate?

The FM transmitter is a FM stereo transmitting configuration, which radiates FM wave on the air by modulating the any required signal to the carrier signal. The transmission frequency is set 88.1MHz to 107.9MHz, frequency interval is 0.1MHz.

### Operating Instructions:

#### Turning on / off the FM Transmitter

This unit is designed to charge your iPod as it plays. When connected to your iPod and plugged into the cigarette lighter outlet in your car, it automatically turns on. When disconnected, it turns off. If there is no audio input signal for more than 1 minute after connected to your iPod, this unit enters the standby mode. In the standby mode, transmission stops and the LCD turns off. When there is an audio signal, it automatically “wakes up” to start transmitting music.

#### Setting up the Preset Memory

You can store two FM frequencies in the preset memory and easily call them up by pressing one of the preset buttons. The default frequency for Preset 1 is 90.1MHz, and 98.1MHz for Preset 2. To change the default-preset frequencies with other frequencies, follow the instructions below:

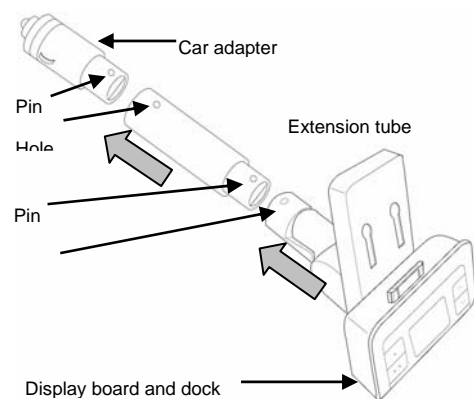
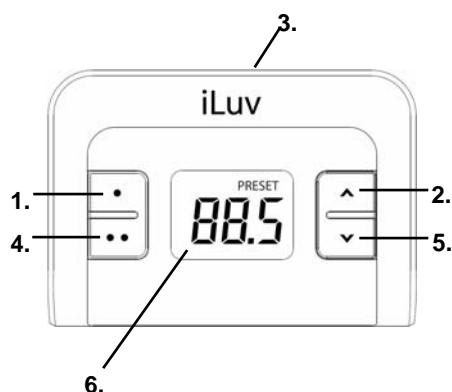
1. Connect the FM transmitter to your iPod and plug into the cigarette lighter in your car. The LCD screen turns on.
2. Turn on the radio in your car and find an unused frequency on the FM dial.
3. Select a frequency using the “^” (Frequency Up) and “v”(Frequency Down) buttons.
4. Press and hold “λ” (Preset 1) button until the selected frequency display blinks.
5. Select a frequency using the “^” (Frequency Up) and “v” (Frequency Down) buttons.
6. Press and hold “λλ” (Preset 2) button until the selected frequency display blinks.

#### Transmitting Your Favorite Songs to a Nearby FM Radio

1. Connect the FM transmitter to your iPod.
2. Play songs from your iPod.
3. Press one of the preset buttons.
4. Turn on your car radio.
5. Tune your FM radio to a FM frequency stored on the selected preset memory, and listen to your favorite music.

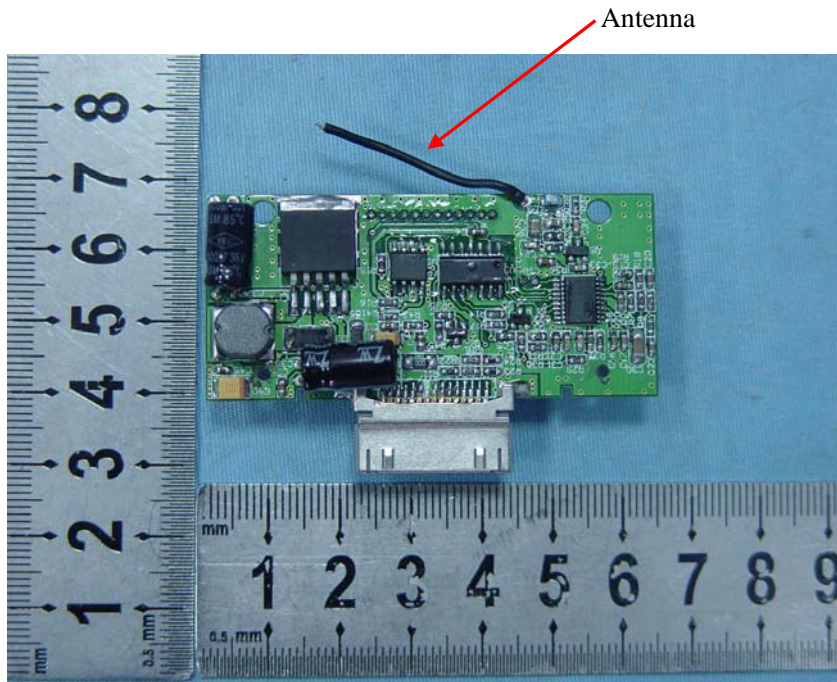
## 2) Provide information on the device and its antenna.

The transmitter configuration:



- |                              |                            |
|------------------------------|----------------------------|
| 1. • (Preset 1) button       | 2. ^ (Frequency up) button |
| 3. 30-pin connector          | 4. •• (Preset 2) button    |
| 5. v (Frequency down) button | 6. LCD screen              |

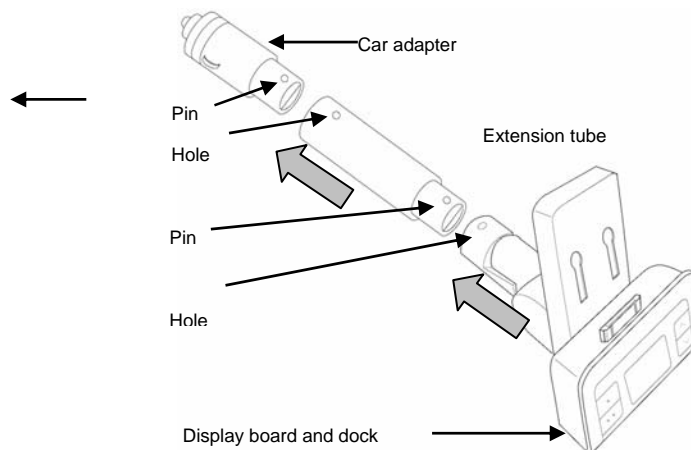
The transmitter utilizes a wire as dipole antenna.



### 3) How is it installed?

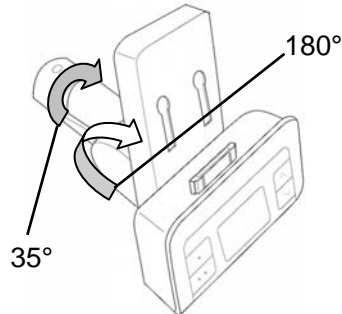
#### Connecting the extension tubes

There are 2 pcs tubes included with the i707. The longer one is the extension tube which can be used as needed. One end of the extension is smaller and has pins while the other is wider and has an opening with two holes on either side. To connect the extension tube with the car adapter and the display board and dock, find the pins and holes on each part. Align the pins on each tube with the holes on the connecting end and insert. The tubes will “click” together when a successful connection has been made.



### Adjusting the angle of FM transmitter

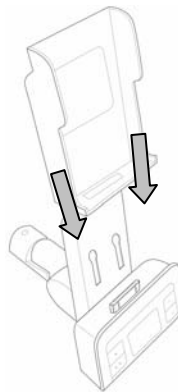
The display board and dock can be adjusted up or down 180 degrees. The connector, which connects the display board and the extension tube, can adjust 35 degrees to the left or right allowing you to adjust the i707 for easy operation while driving.



### Inserting the Dock Adapter

The i707 comes with dock adapters for your iPod. There are also dock adapters included with your iPod. Choose the correct adapter and follow the instructions below.

1. Align the hooks in the back of the dock adapter with the holes on the dock above the display board.
2. Carefully lower the dock adapter until it rests securely in the dock with the 30 pin connector fitting through the opening at the bottom of the adapter.



4) What test procedure was used?

ANSI C63.4, the test was performed in a semi-anechoic chamber.

5) If tested in a car, how was it configured/tested?

Not tested in a car, it was tested in a semi-anechoic chamber. The EUT has been additionally tested / verified and does work in a typical car.

6) Was the tuning range properly verified? The test lab should indicate in the report that the tuning controls were manually adjusted to verify maximum tuning range.

The FM transmitter is a FM stereo transmitting configuration, which radiates FM wave on the air by modulating the any required signal to the carrier signal. The transmission frequency is set from 88.1 to 107.9MHz, frequency interval is 0.1MHz.

We selected the low (88.1MHz) mid (98.1MHz) and High (107.9MHz) working frequency to measure the frequency. tune the knob to select the transmission frequency .

We have indicated the testing in the test report, see clause 6.

7) Was the bandwidth properly tested with maximum audio input?

The test was performed with the maximum audio input. And play typical audio signal (music song).

We have indicated the operating condition in the test report, see clause 5.3.