

2. Electronic pen

Pen lead(Operating button) : Operates for selecting and executing function contacting on the panel with pen-tip. Acts as left button of Mouse.

L & R button of Mouse : Locates on the grip of the pen and work with L/R button of Mouse when the pen contact on the panel.

3. Accessory

Panel : Acrylic panel for protecting LCD monitor.

Velcro tape : To fix the panel on the monitor.

Silicon fixture : Attach on the monitor.

4. Software

driver only in Windows98SE/ME.

, you can use EZ-Canvas just with installing

EZ-Canvas already, please shut down for installation of software.

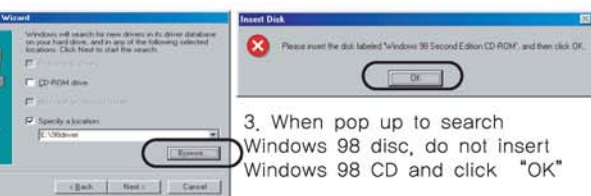
After inserting software CD, press "Next" button.

Following the window message

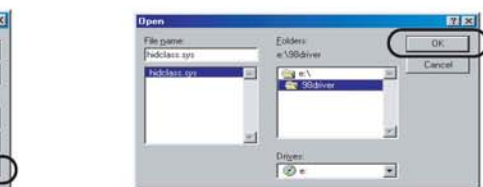
Windows 98 SE/ME

On computer, it will be execute 'Add New Hardware Wizard'

In window, assign 'Specify a location' to "CD > 98driver >



Click for 'hidclass.sys', assign "CD > 98driver > hidclass.sys"



1. Detach the one from the velcro on the back of panel, remove protection tape in glueing face of that velcro, and then attach the velcro to locate upper of monitor.



2. Cling the silicon fixture to the front of monitor before putting EZ-Canvas on.

3. Attach EZ-Canvas on the center of monitor.



4. Connect USB cable linked with left receiver to computer.

5. Keep your electronic pen clinging to magnetic right receiver when you don't use.

3 Setup EZ-Canvas

1. Set working area

1. Execute 'Set working Area...' in the icon menus on the EZ-Canvas being the right side of task bar after installing EZ-Canvas.

2. Setup working area by touching 5 points on the monitor screen. Working area setting will be completed and saved after finishing setup of 5 points with clicking in the center of each point. If you are failed, please re-set 'Set working area...' setting.

2. Detail adjustment of working area

1. Execute 'Tuning working area...' in the icon menus of EZ-Canvas on the task bar.

2. Adjust working area in detail by matching mouse cursor of Window with pen-tip point for up, down, left and right of monitor screen.

3. It will be saved when 4 positions of point setting is completed as following window instruction.

3. Adjustment of Mouse point position

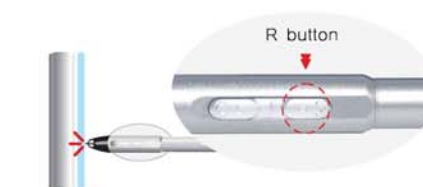
1. It is used whether to separate mouse cursor of window with pen-tip pointer, or move to the position checking by user comfortable.

2. Using the arrow keys of key-board, set the location of window mouse cursor.



2. Executing

Click twice quickly in position for desired



3. On

Click R screen

Application Software

► NAVIscrip

It is possible to input your handwriting and drawing directly on the screen such as Microsoft products, word processors, graphic programs.

► NAVIboard

You can use your data which is made from any software on the computer monitor screen. You can write on the fixed image or process and save it.

► PaintBox

You can draw a picture easily with pen in electronic sketching. You can save picture with e-mails.

Product Warranty

Product	EZ-Canvas NVS-858
Purchased date	

Customer	Name :
	Address :
	Telephone :
Sales Agency	Name :
	Address :
	Telephone :
	Customer support center :

FCC NOTICE

THIS DEVICE COMPLIES WITH PART 15 OF THE FCC RULES.
OPERATION IS SUBJECT TO THE FOLLOWING TWO CONDITION:
(1) THIS DEVICE MAY NOT CAUSE HARMFUL INTERFERENCE, AND
(2) THIS DEVICE MUST ACCEPT ANY INTERFERENCE RECEIVED,
INCLUDING INTERFERENCE THAT MAY CAUSE UNDERSIRED
OPERATION.

This equipment has been tested and found to comply with the limits for a Class B digital device, pursuant to part 15 of the FCC Rules. These limits are designed to provide reasonable protection against harmful interference in a residential installation. This equipment generates, uses and can radiate radio frequency energy and, if not installed and used in accordance with the instructions, may cause harmful interference to radio communication. However, there is no guarantee that interference will not occur in a particular installation. If this equipment does cause harmful interference to radio or television reception, which can be determined by turning the equipment off and on, the user is encouraged to try to correct the interference by one or more of the following measures :

- Reorient or relocate the receiving antenna.
- Increase the separation between the equipment and receiver.
- Connect the equipment into an outlet on a circuit different from that to which the receiver is connected.
- Consult the dealer or an experienced radio/TV technician for help.

NOTE : The manufacturer is not responsible for any radio or TV interference caused by unauthorized modifications to this equipment. Such modifications could void the user's authority to operate the equipment.