

DNP

DIGITAL PHOTO PRINTER  
DP-DS820DX

For Safe Operation  
Start-up Guide English

©2023 Dai Nippon Printing Co., Ltd.

2023100502

English

WARNING

To reduce the risk of fire or electric shock, do not expose this apparatus to rain or moisture. To avoid electrical shock, do not open the cabinet. Refer servicing to qualified personnel only. This apparatus must be grounded.

For pluggable equipment, the socket-outlet be installed near the equipment and shall be easily accessible.

To disconnect the main power, unplug the AC IN connector.

This unit has no power switch.

When installing the unit, incorporate a readily accessible disconnect device in the fixed wiring, or connect the power plug to an easily accessible socket-outlet near the unit. If a fault should occur during operation of the unit, operate the disconnect device to switch the power supply off, or disconnect the power plug.

For the Customer in USA

FCC CAUTION

Changes or modifications not expressly approved by the party responsible for compliance could void the user's authority to operate the equipment.

Note: This equipment has been tested and found to comply with the limits for a Class A digital device, pursuant to part 15 of the FCC Rules. These limits are designed to provide reasonable protection against harmful interference when the equipment is operated in a commercial environment. This equipment generates, uses, and can radiate radio frequency energy and, if not installed and used in accordance with the instruction manual, may cause harmful interference to radio communications. Operation of this equipment in a residential area is likely to cause harmful interference in which case the user will be required to correct the interference at his own expense.

Caution: Use shielded cables to connect this computers. Any changes or modifications not expressly approved by the grantee of this device could void the user's authority to operate the equipment.

FCC statement

This device complies with part 15 of the FCC Rules. Operation is subject to the following two conditions: (1) This device may not cause harmful interference, and (2) this device must accept any interference received, including interference that may cause undesired operation. The identification, by name, address and telephone number, of a responsible party located within the United States.

DNP Imagingcomm America Corporation

4524 Enterprise Drive NW

Concord, NC 28027

United States

Telephone (704) 784-8100

www.dnpimagingcomm.com

This transmitter must not be co-located or operated in conjunction with any other antenna or transmitter.

This equipment complies with FCC radiation exposure limits set forth for an uncontrolled environment and meets the FCC radio frequency (RF) Exposure Guidelines as this equipment has very low levels of RF energy.

Introduction

- Be sure to read this document before using the product. After reading, keep it in a safe place where it can be easily accessed as needed.
- The warnings listed here are to ensure proper use of the close up, to prevent physical injury to the customer or other persons, and to prevent property damage. Please follow these warnings.
- Please read the user guide for details on the printer and how to set it up.

For Safe Operation

Please read this document carefully before use.

Warnings and Cautions

The possible levels of injury or damage due to misuse are categorized below as Warnings and Cautions, according to the degree of danger involved.

Warning

- This unit has no power switch. When installing the unit, incorporate a readily accessible disconnect device in the fixed wiring, or connect the power plug to an easily accessible socket-outlet near the unit. If a fault should occur during operation of the unit, operate the disconnect device to switch the power supply off, or disconnect the power plug.
- Use the product only with the designated voltage and frequency. Improper connection may cause electric shock or fire.
- Avoid connecting too many devices to the outlet used for this product and using extension cords. The outlet may overheat and cause a fire.
- Do not damage, cut, bundle, or alter the power cord. Also, the cord may be damaged if heavy objects are placed on it, or if pulled or bent with excessive force, and it may cause a fire.
- Do not install the product in places with salinity or corrosive gases in the air. This may cause a fire.
- Do not block the vents of the product. Heat may build up in the product and cause a malfunction or fire.
- Do not stand on or place heavy objects on the product. Also, do not apply excessive force on the buttons, switches, terminals, etc. This may damage the product and cause injury to the user or other people.
- Be careful not to injure yourself or damage other things on the edges of the product.
- Do not use this product for applications involving human life (such as medical, space, aeronautic, or other applications that require extreme reliability).
- The DP-DS820DX weighs 22 kg (48.50 lbs.). When moving the product, have two people lift it by the handles in a way that avoids physical stress. Lifting recklessly or dropping the product may cause physical injury.
- Place the product as close to an outlet as possible to be able to easily unplug the power cord in case of problem.
- If there is dust on the plug, clean it off thoroughly. It may cause an electric shock or a short circuit.
- If metal objects or liquids have fallen into the product, or if there is smoke, a strange odor, or any other abnormality, immediately unplug the power cord, and then contact a service representative. Do not continue using the product if it is damaged or not operating properly. This may cause an electrical shock, a short circuit, a fire, or damage the product.
- Be sure to ground the product. Otherwise, a short circuit may occur, causing an electric shock or fire.
- Do not plug or unplug the cord with wet hands. This may cause an electric shock.

- Do not open the product, disassemble internal parts, or modify the product. It may cause an electric shock, fire, or injury, or a product malfunction. For internal check-ups, adjustments, or repair, please contact a service representative.

Caution

Details can be found in the user guide, so be sure to read the user guide before using the product.

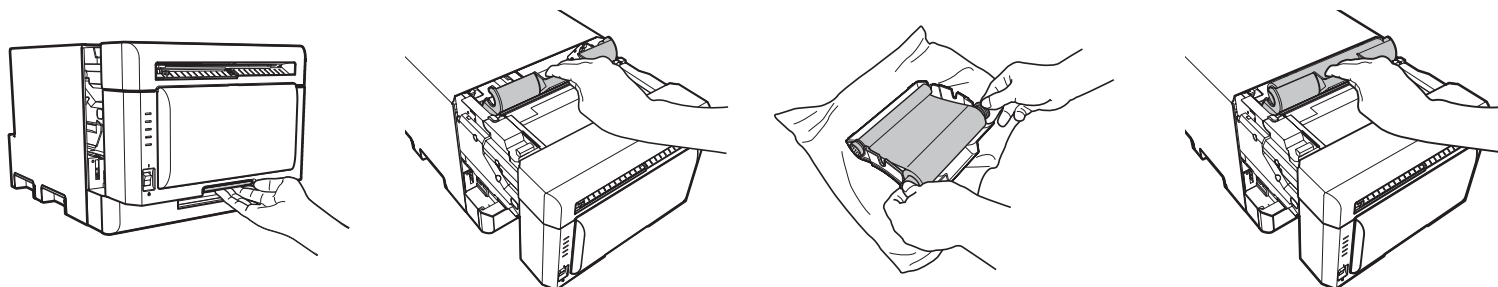
Caution for installation

Details can be found in the user guide, so be sure to read the user guide before using the product.

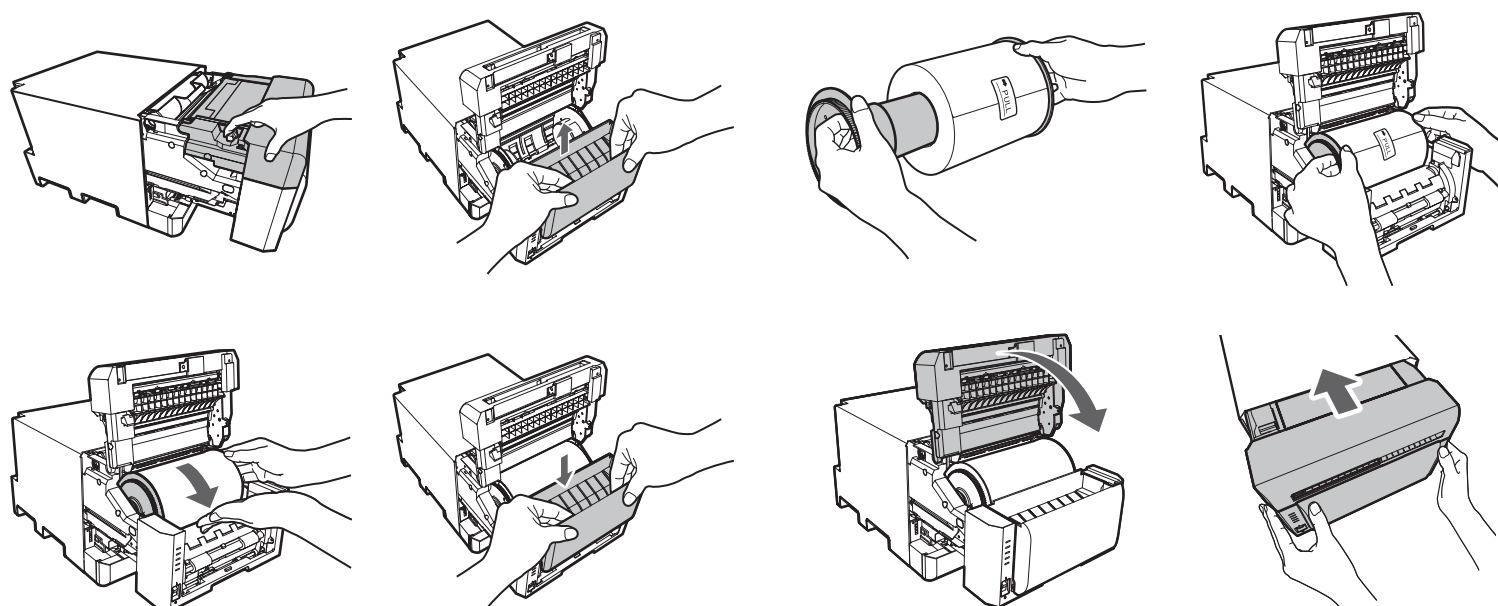
Specifications

Print method	Thermal dye sublimation transfer	Rated current	100 V 3.9 A 240 V 1.6 A
Dimensions	322 mm(W) × 459.8 mm(D) × 271.8 mm(H)	Operating environment	Temperature 5°C to 35°C in natural convection conditions Humidity 35% to 80% with no condensation
Weight	Approx. 22 kg (printer unit only)		
Rated voltage	AC100 V – 240 V 50 Hz/60 Hz		

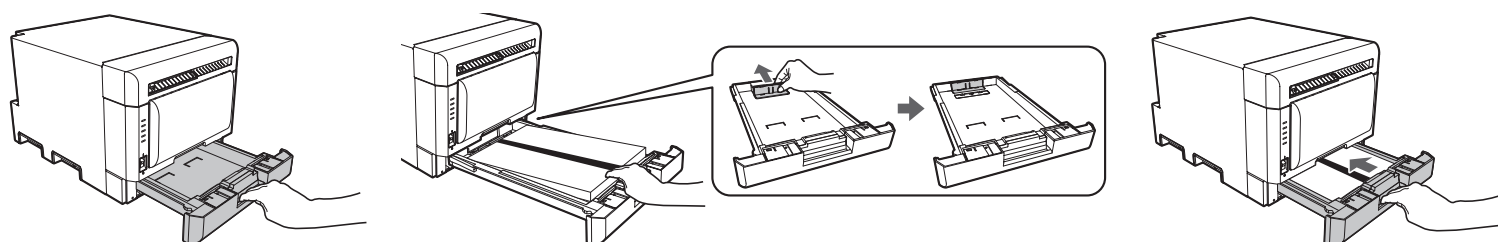
## Setting the ribbon



## Setting the roll paper



## Setting the sheet paper



- Replace the paper and ribbon in a set.
- Print operations cannot be carried out when the trash box is removed.
- For details, refer to the user guide.