

Spec Sheet

Model name: XP2 BLE Antenna
Product: XP2-MDPB, XP2-MAPB

page2 ----- ELECTRICAL SPECIFICATIONS

page3----- ANTENNA RADIATION PATTERN

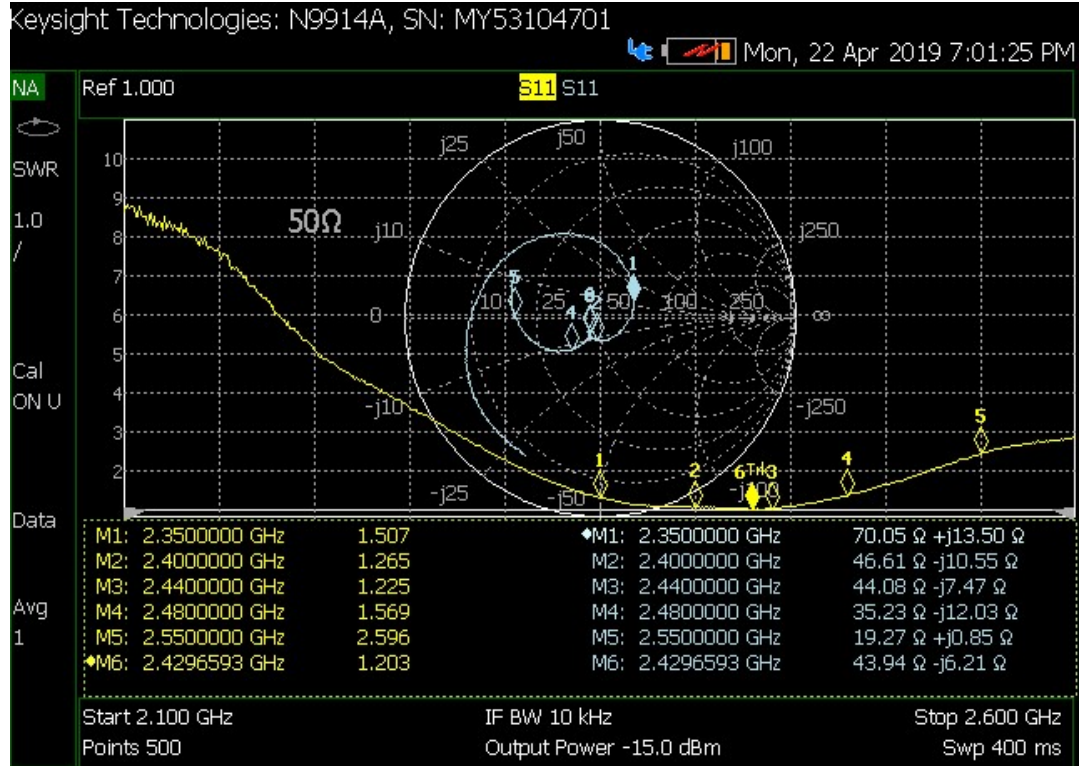
page4 ----- MECHANICAL SPECIFICATIONS

XP2-MDPB
BLE Antenna

Spec

Band	2.4GHz ISM
Frequency	2.4~2.483GHz
VSWR	≤ 1.7
Peak Gain	0.99~1.72 dBi
Avg Gain	-3.21 ~ -2.64 dBi
Directivity	Directional
Polarization	Linear
Imapedance	50 Ohms
TYPE	PCB(FR4) type PIFA

VSWR

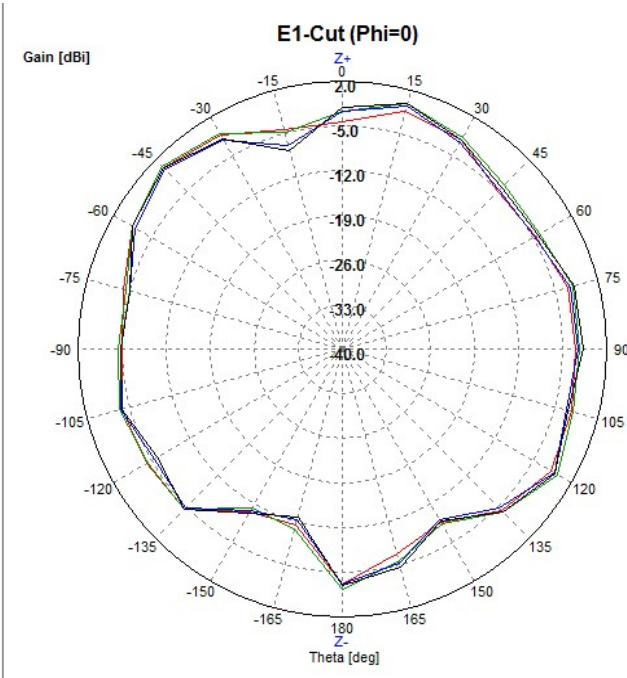


XP2-MDPB
BLE Antenna

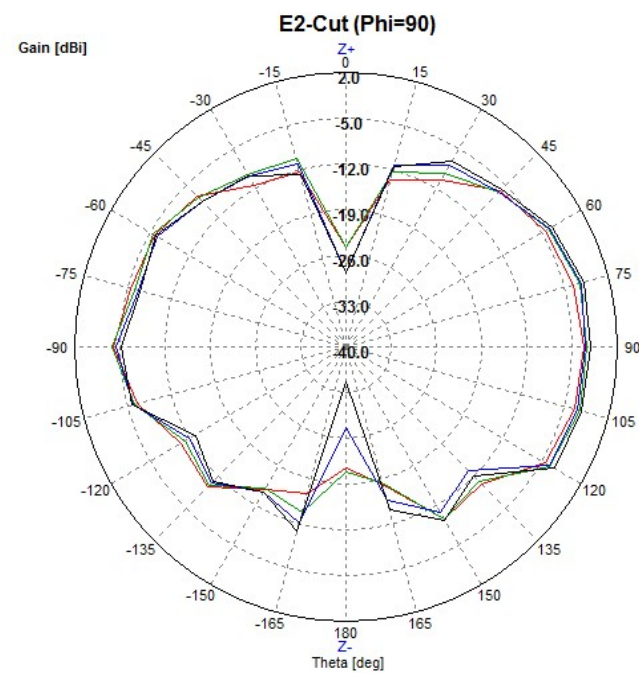
Radiation

No	Frequency	Peak Value		Minimum Value		Avg. Gain	Efficiency
	[MHz]	Value[dBi]	Degree	Value[dBi]	Degree	[dBi]	[%]
1	2.4	0.99	75/75	-14.51	90	-3.11	48.82
2	2.45	1.72	75/75	-15.43	60	-2.64	54.4
3	2.483	1.25	75/75	-16.68	60	-3.21	47.74
4	2.5	1.59	75/75	-18.5	60	-2.98	50.38

Pattern

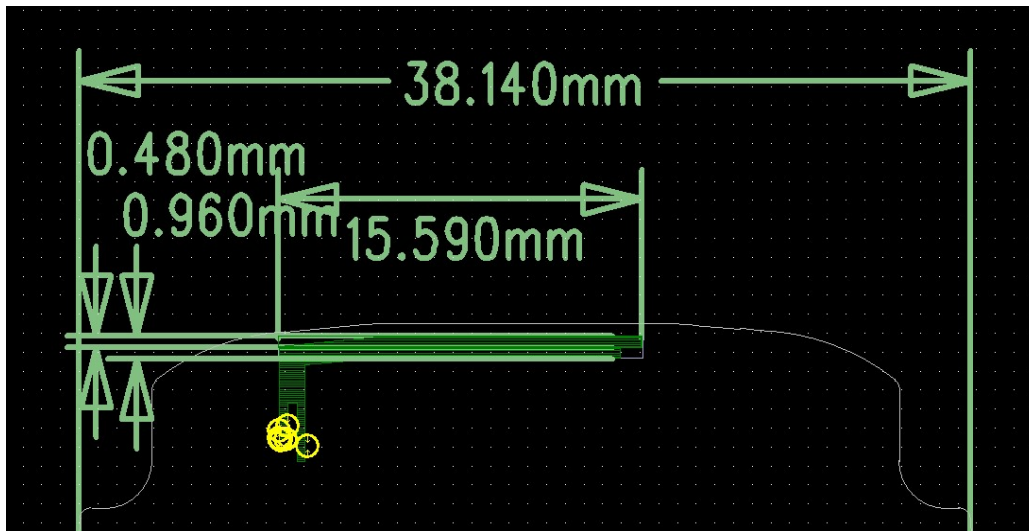


▲ Side View(left), ▼ Top View front at -90



Drawing

XP2-MDPB
BLE Antenna



Pictures