

## Appendix

### Photographs of Test Setup

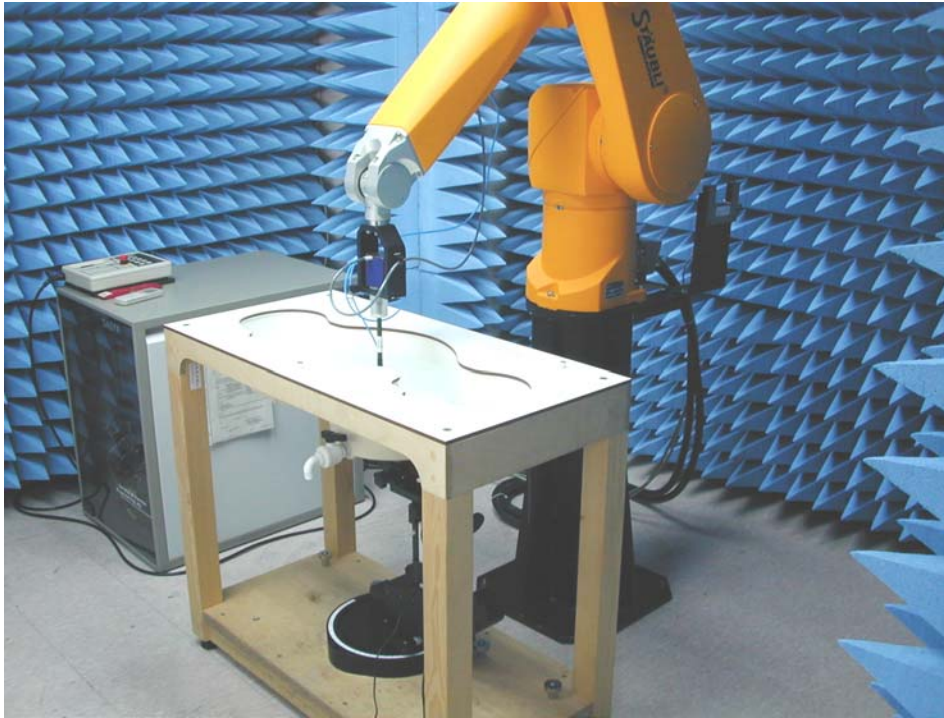


Fig.1 Photograph of the SAR measurement System

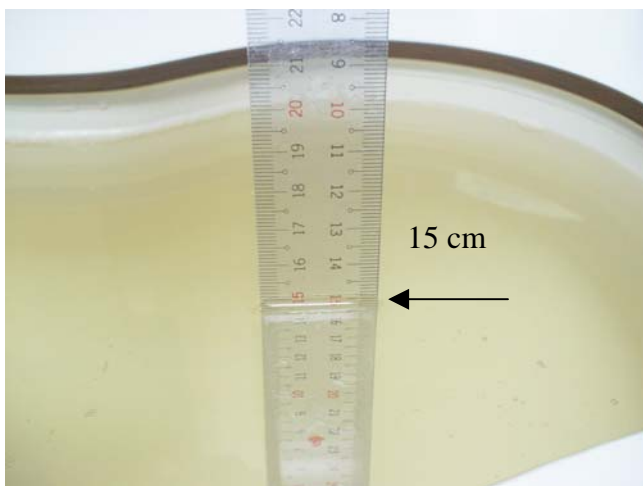


Fig.2 Photograph of the Tissue Simulant Fluid liquid depth 15cm for Left-head Side

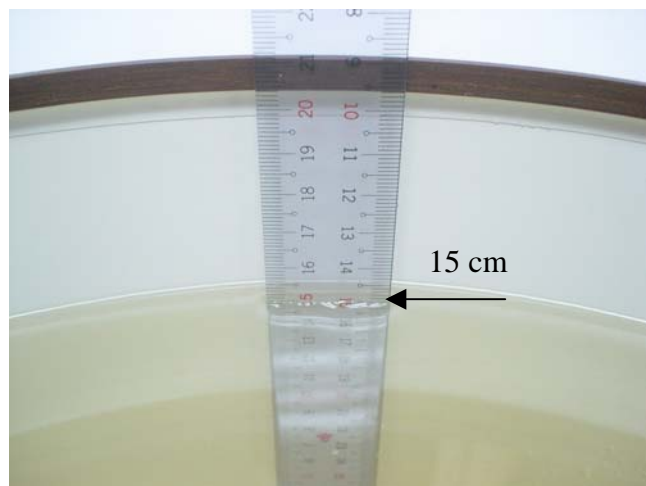


Fig.3 Photograph of the Tissue Simulant Fluid liquid depth 15cm for Flat (Body)

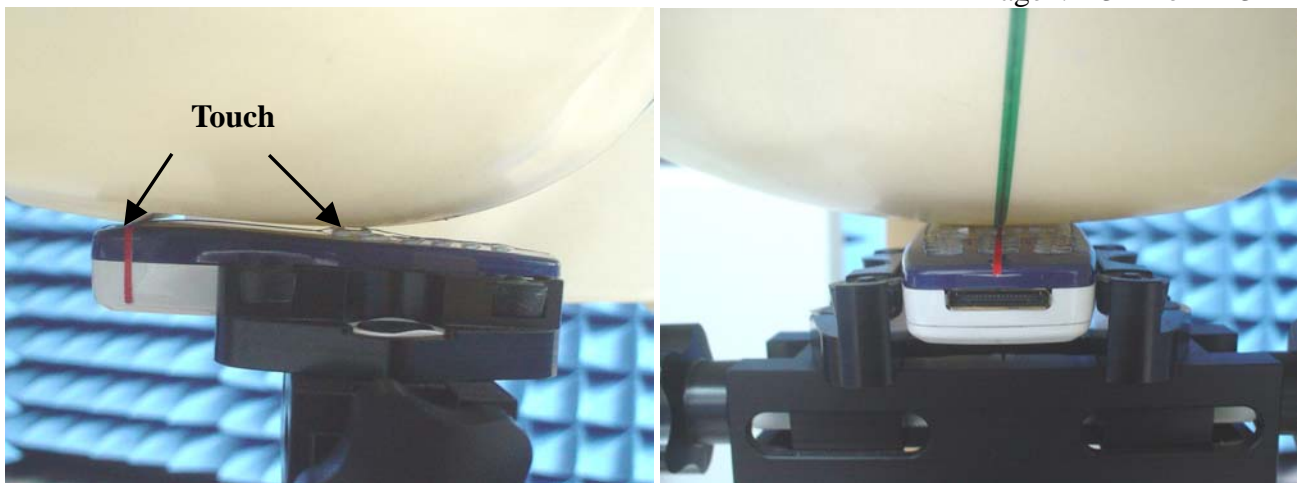


Fig.4 Right Head Section / Cheek-Touch Position

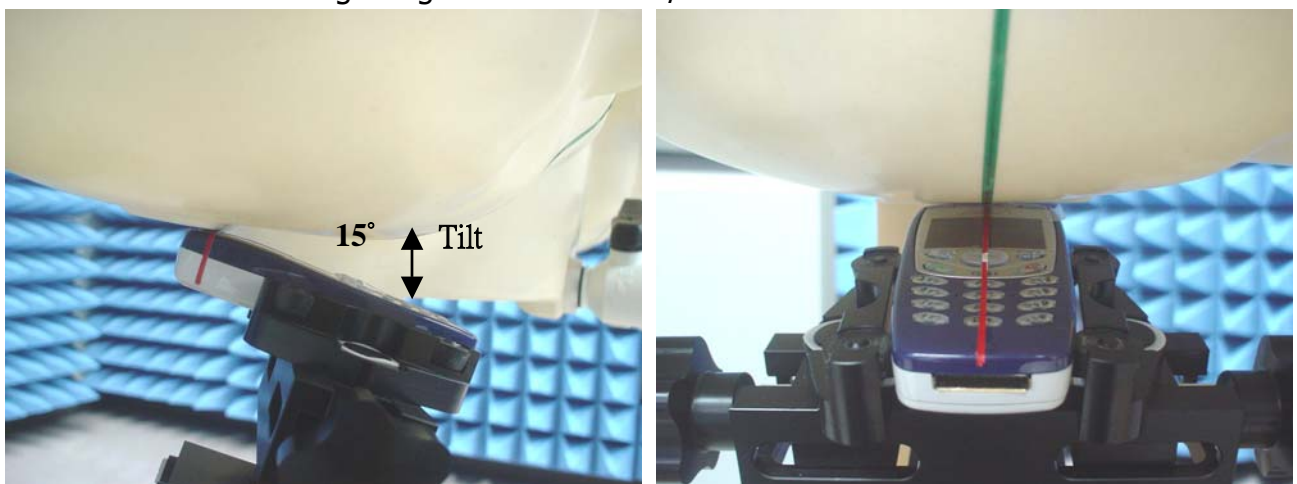


Fig.5 Right Head Section / Ear-Tilt Position(15°)

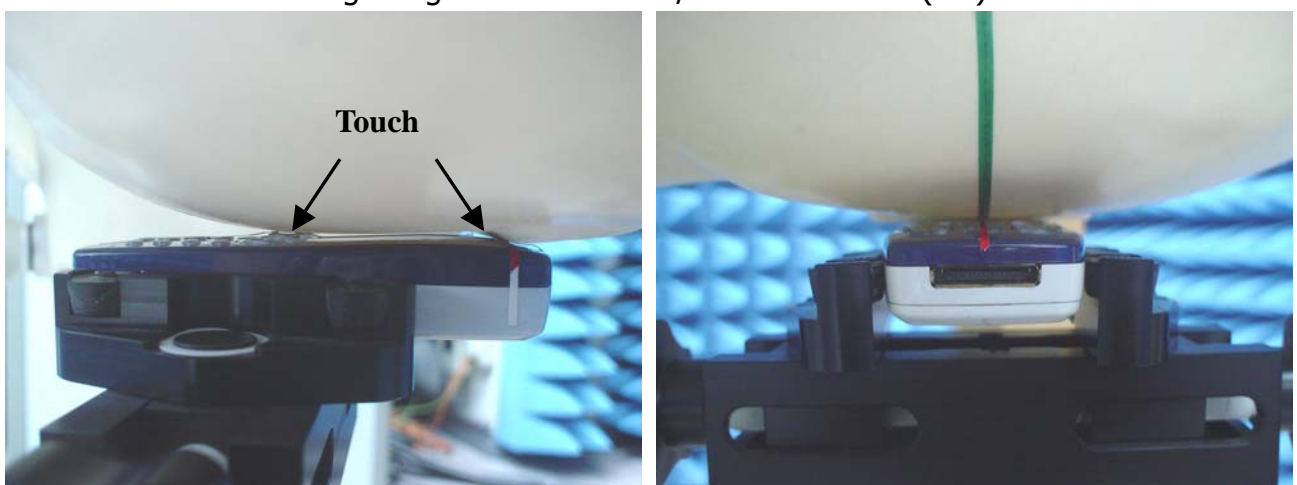


Fig.6 Left Head Section / Cheek-Touch Position

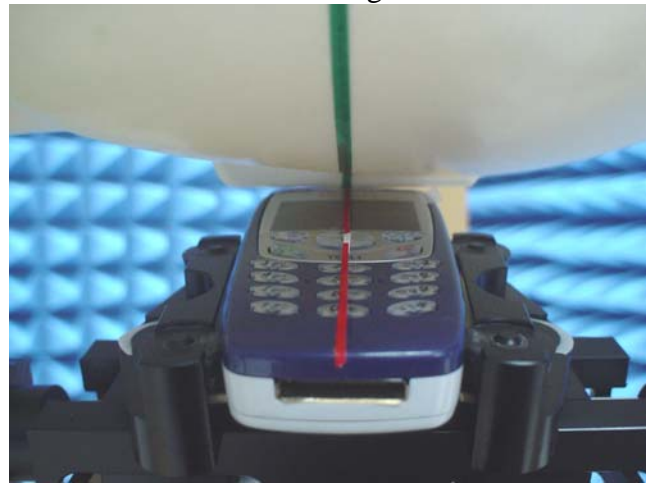
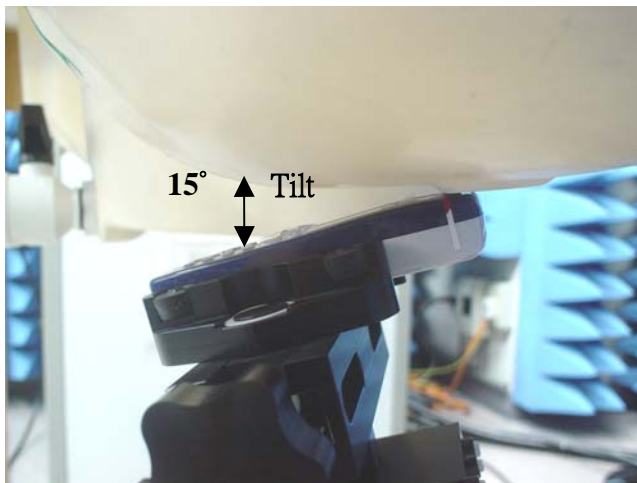


Fig.7 Left Head Section / Ear-Tilt Position(15°)

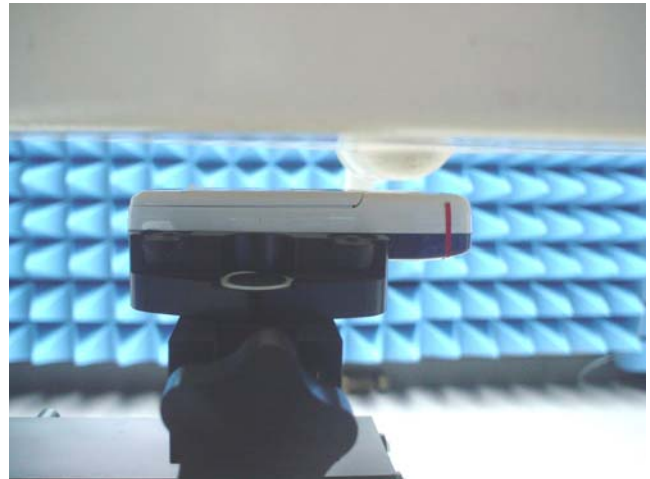
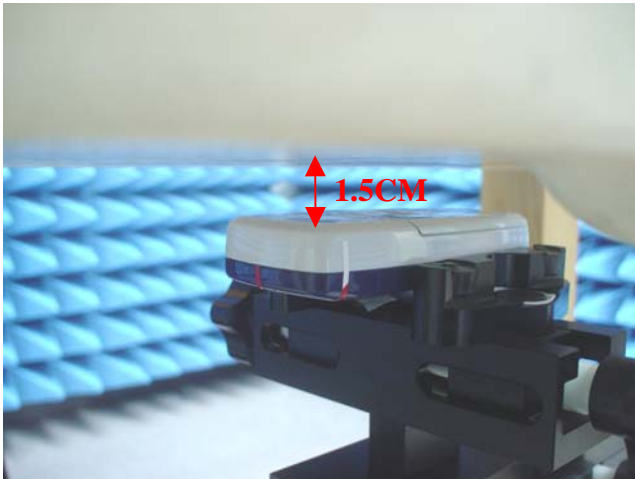


Fig.8 Body Worn with Headset Position

## Photographs of the EUT



Fig.9 Front view of device



Fig.10 Back view of device



Fig.11 Front view of the Phone connect with Charger



## Photographs of the Battery



Fig.12 Front view of Battery



Fig.13 Back view of Battery