

Difference Statement

We, Compex Systems Pte Ltd

Declare our company's product:

Product name: WiFi 7 (802.11be) 2x2 Dual Band Dual Concurrent Wireless Module

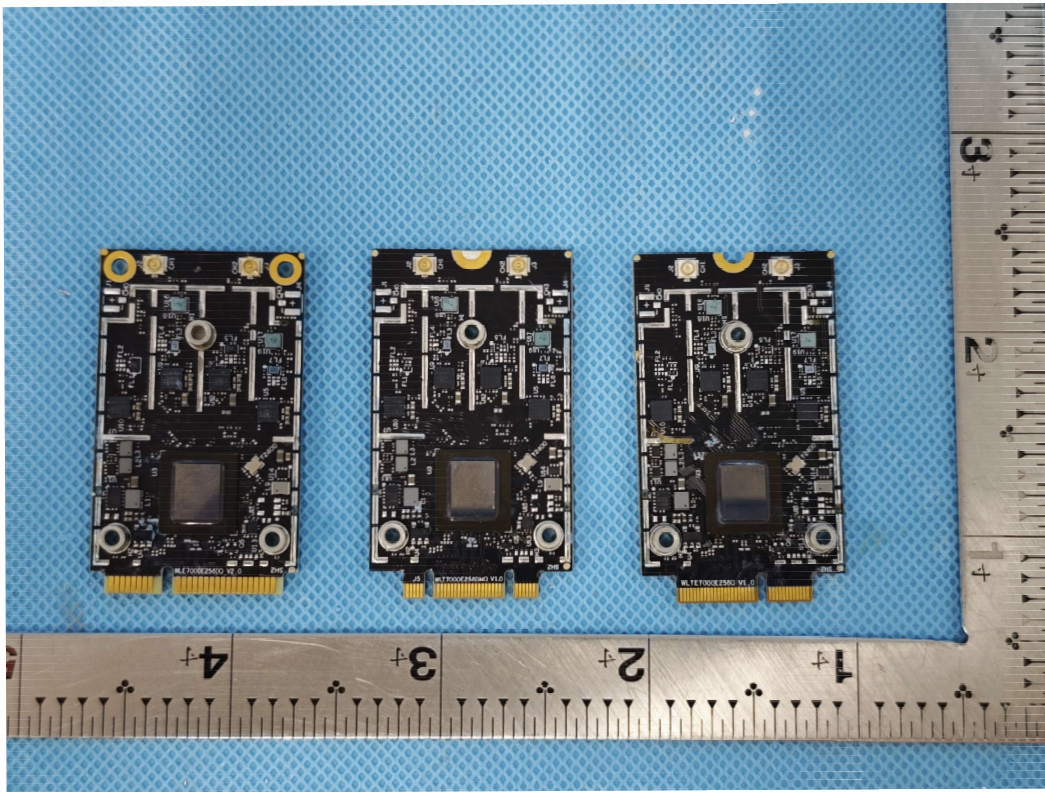
Model name: WLE7002E55, WLTE7002E55, WLTB7002E55

Model WLE7002E55, WLTE7002E55, WLTB7002E55 are identical except for different interfaces.

Due to the differences in signal matching and signal sequence between different interfaces, there are differences in the schematic and layout of the interface part (please refer to the pin instructions in the user manual for specific signal differences). The differences in these interface parts are only the difference of module pin circuit and has nothing to do with RF circuit. The schematic, PCB layout, RF specification, etc. of RF circuit are exactly the same. The representative model used for testing is WLE7002E55.

We declare the differences between these three models are do not affect the RF /EMC/Safety performance and the above mentioned statements of our company are totally true.





Sincerely yours,

Signature:

Name of authorized signer: Yaw Thiam Teng

Title of authorized signer: R&D Software Manager

Company Name: Compex Systems Pte Ltd

Date: 2025/1/3