

4.2. Recording TV

STEP1 Change storage location for Audio Video Clips

Under normal circumstances, you do not need to change a folder location for a movie or an audio video clip. However, you have an option to change this if necessary. Please follow the IC-TV Menu in the steps below.

[TV]→[Setting]→[Output folder]



04_004

(Note)

First Time Recording

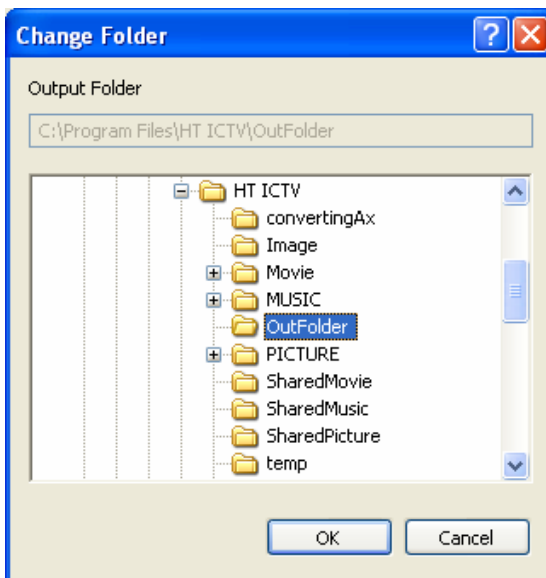
Once you select a storage location and a format for recording, you do not need to make this selection every time. You can change the setting later when necessary!

STEP2 Save Files

There is a default **[Output Folder]** location for you to save files. If you are to change the location, please click on **[Change]** and then hit **[Enter]**. Once you specify the location, you can click on **[OK]** to make the change.



04_005



04_006

STEP3 Select Recording Format

You can choose a recording format from the IC-TV menu. Please follow the steps below.

[TV]→[Setting]→[Rec. Format]

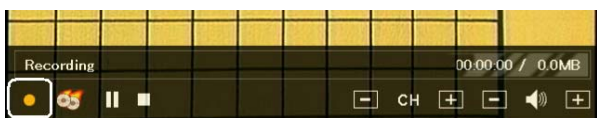


04_020

(Note)

Start Recording

While you are watching a TV program via IC-TV, you can simply start to record your favorite show by clicking the **[Record]** button, which is located at the bottom-left corner of the TV screen.



04_007

When you click on the **[Record]** button, you are recording to the pre-selected folder location. When you wish to finish recording, please click on the **[Stop]** button.



04_008

4.3. To Schedule Recording of TV Programs

(1) To Schedule a Recording with EPG

STEP1 Select EPG Guide

To schedule a recording with EPG (Electronic Program Guide), please follow the IC-TV menu below.

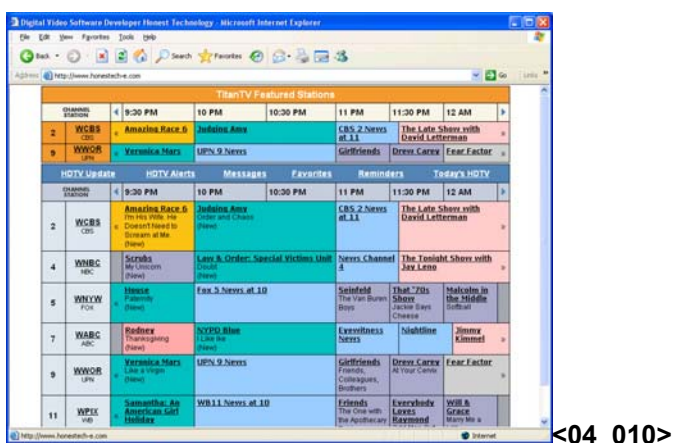
[TV]→[Schedule]→[Guide]



04_009

STEP2 Electronic Program Schedule

Below is an electronic schedule guide for TV programs, which updates via **your** Internet connection.

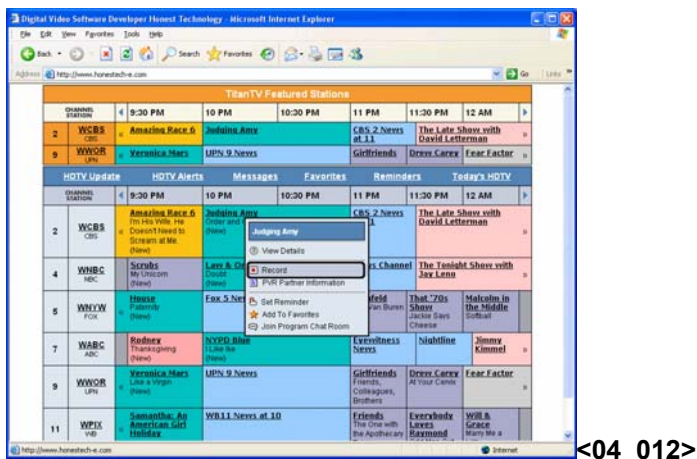


<04_010>

STEP3 To Schedule A Recording

For each TV program, you can click to view **the** Options Menu.

From the menu, you can choose [Record] to schedule a recording.



(2) To Manually Schedule a Recording

STEP1 Add Schedule

You can specify a time and recording settings for a TV program.

Please follow **the IC-TV menu below**.

[TV]→[Schedule]→[Add]



STEP2 Make Necessary Settings

When you follow **the IC-TV Menu ([TV]→[Schedule]→[Add])**, you can insert or modify information to schedule a recording.

After all necessary information has been entered; please click **[OK]** to add a schedule.

(e.g. of information: Input Source, Channel, Start Time, Duration and others)

Schedule - Add

Input source : ☒ TV ☐ CATV
 Channel : 6 MTS : Stereo

Recording cycle : ☐ Week ☐ Day ☒ Once
 Recording mode : ☒ Rec ☐ Direct Burning ☐ View

Start Time : 2004 Year 11 Month 5 Day
 FRI Week 15 Hour 57 Minute

How long : 0 Hour 1 Minute

After schedule recording : ☒ recorded schedule item will be deleted
 Processing to : Nothing to do

Ok Cancel

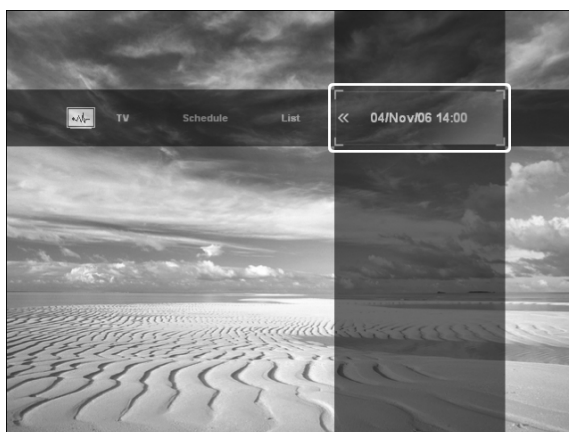
04_016

(3) Check Recording Schedule(s)

STEP1 View the List of Schedules

Please follow **the IC-TV menu below** to view a list of recording schedule(s) made. You can also select a schedule to review details or to confirm.

[TV]→[Schedule]→[List]



04_017

STEP2 Edit Recording Schedule(s)

From the list, you can select a schedule to review its details. After review, click **[Return]** if there is no need for modification. Click **[Delete]** to delete the schedule or click **[Edit]** to edit or modify the schedule.

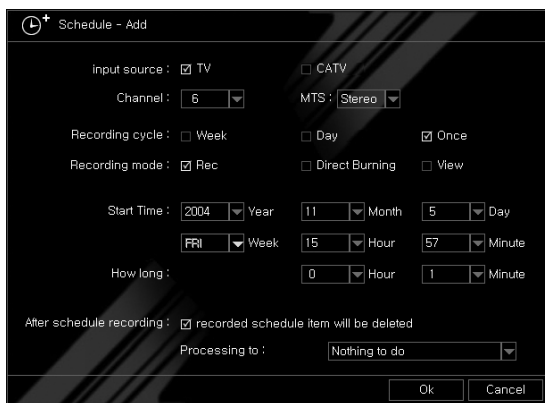


04_018

(Note)

To Change a Recording Schedule

In case you want to modify a schedule, please click **[Edit]**, and go through a screen menu that is similar to **the** initial **[Add]** schedule setup.



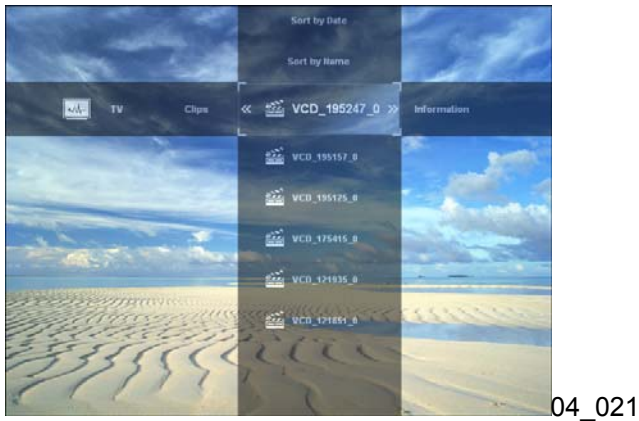
04_019

4) Select a Recorded Program

A recorded program can be played. Please follow the IC-TV menu below.

[TV] → [Clips]

Just select the one you want to view or play, and hit [Enter].



4.5. Burning

5) File Burning

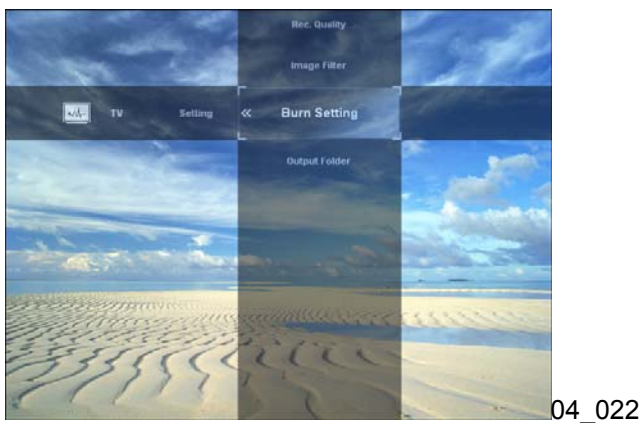
(1) Settings

STEP1 Get Ready to Burn


In order to burn a file, you have to choose a drive, temp folder and Video_ts folder.

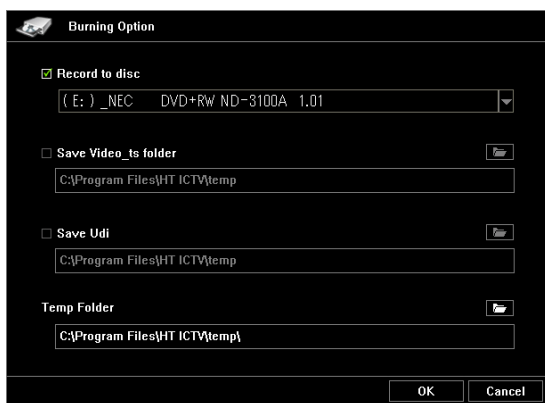
Burning can be setup from the IC-TV Menu in the steps below.

[TV]→[Setting]→[Burn Setting]

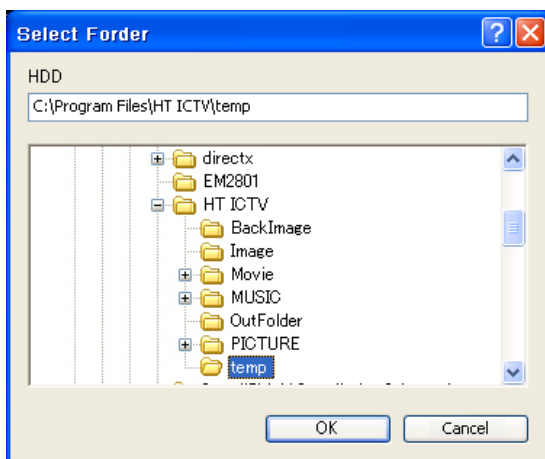


STEP2 Select a Location for Burning

You have to select an ODD (Optical Disk Drive) location to burn a VCD or DVD. You also have to choose a location for the temp and Video_ts folder by clicking on the  icon, and click [OK] after selections are made.



04_023



04_024

Once you click [OK], you return to the menu screen.

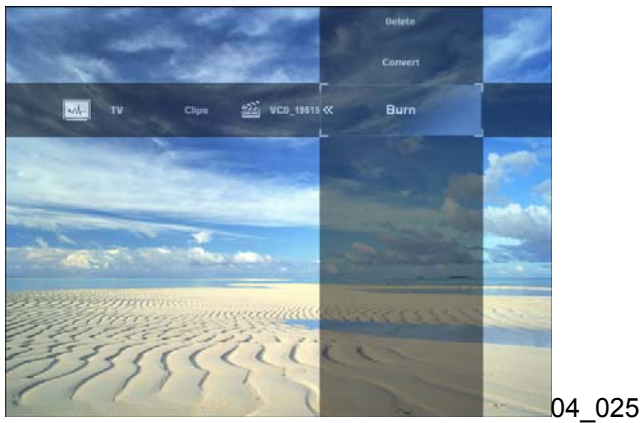
(2) Burning

(2) How to Initiate Burning

STEP1 Select a File to Be Burned

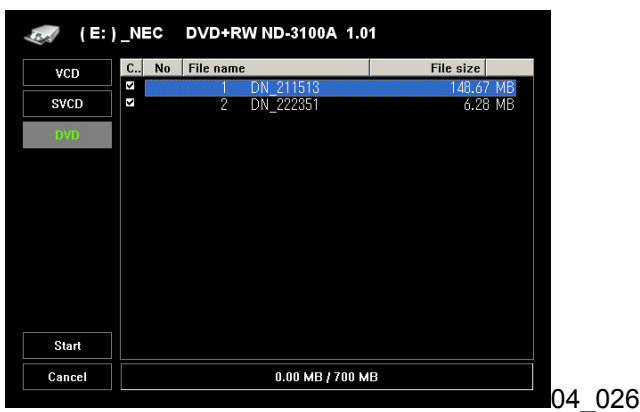
Make sure that you selected the file that you want to burn. Please follow the IC-Menu to start burning.

[TV]→[Clips]→[(file name)]→[Burn]



STEP2 Preparation for Burning

Once a file is selected to be burned, you must choose a format that you want to burn or store (VCD, SVCD, and DVD). After you select a format, you can see a list of a recorded program(s) with the same format, and from this list, please choose an original file that you want to burn from.



STEP3 Start Burning

After all appropriate selections are made; please insert VCD/SVCD/DVD in to the pre-selected drive. Click **[Start]** to commence burning. Once burning starts, you will come back the menu screen. Please wait for completion.



<04_027>

STEP4 Finish Burning

A message for completion pops up when burning is finished.



<04_028>

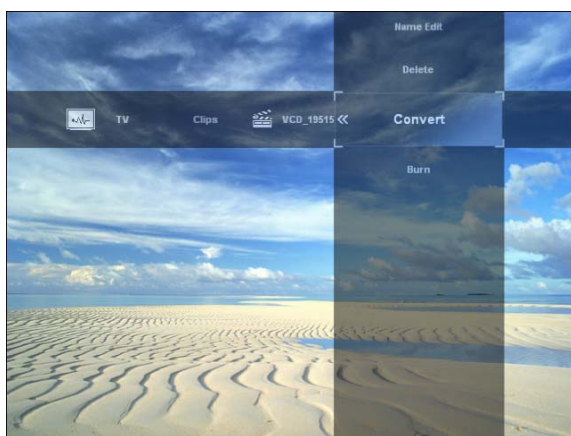
6) File Conversion

STEP1 Go to the Screen for File Conversion.

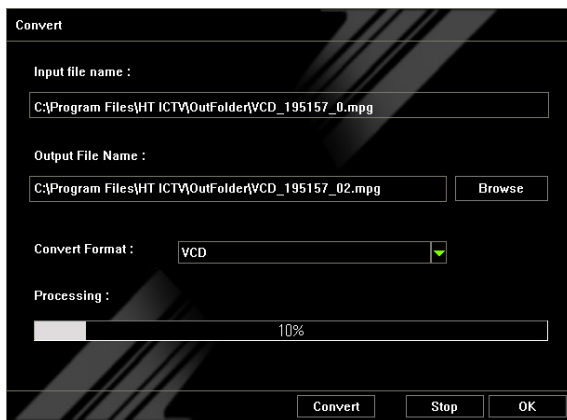
Do you want to convert a recorded program or clip to a different format?

Please follow **the steps below** from the IC-TV menu.

[TV]→[Clips]→[(recorded file)]→[Convert]



04_029



04_030

STEP 2 Preparation for Conversion

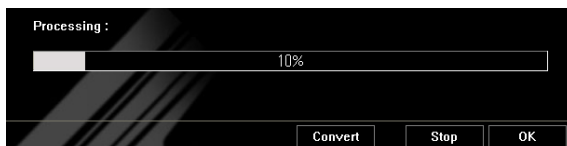
Please choose input & output file names and a format for conversion.

STEP3 Start Conversion

Once selections are made in Step 2, you can click on **[Convert]** to start the file conversion.

STEP4 Wait for Conversion to Complete

Conversion takes time thus it requires your patience. You can monitor the progress from the processing (%) bar.



04_031

5. Options for Pictures

- Make a photo album and save it to IC-TV.
- View saved photo album(s)
- Put on a photo slide show **of your** saved photo album(s)

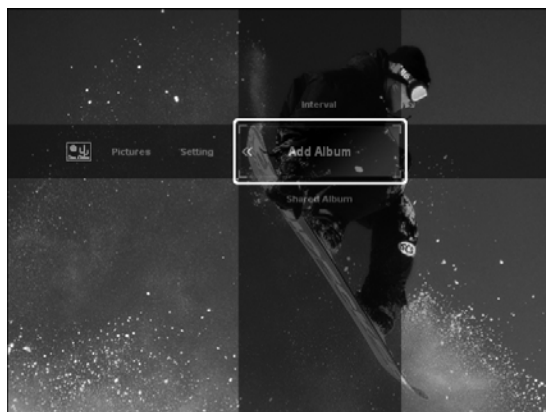
1) Registering Pictures

(1) Photo Album

STEP1 Add a Photo Album

In order to view pictures from IC-TV, you need to select and register photo album(s).
Please follow **the** IC-TV menu to add photo album(s).

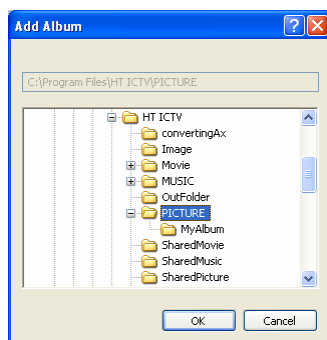
[Picture]→[Setting]→[Add Album]



05_001

STEP2 Select a Folder

Please select a folder where you **have saved your photo(s)** and click [OK] to add **them** as an album.



STEP3 View My Album

You can check whether **the** new album was added successfully.

Please follow **the IC-TV menu below** to see a list of photo album(s).

[Picture] → [My Album]



05_003

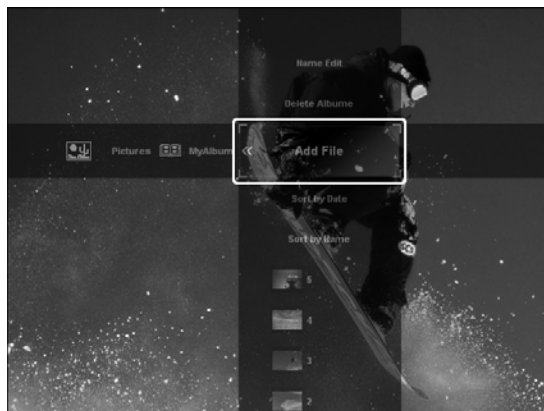
(2) Adding More Pictures

STEP1 Add More **Pictures**

You can add more picture file(s) to existing photo album(s).

Please follow **the IC-TV menu below**.

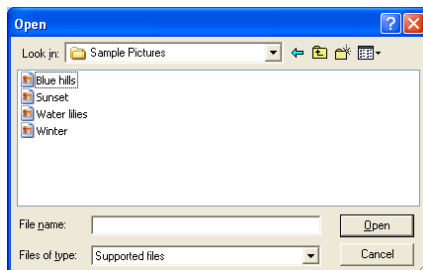
[Picture] → [(name of photo album)] → [Add file]



05_007

STEP2 Select Files to Add

Double click your selected file(s) or hit [Open] to add picture files to the photo album.



05_008

2) View Pictures

Please follow **the IC-TV menu below** to find a picture you want to view or display.

[Picture]→[(name of photo album)]→[(picture file)]

You can view the picture file by double clicking or hit [Enter] while the file is selected.



Photo Slide Show

First you need to select a photo album to put on a photo slide show. You can do this from the IC-TV menu.

[Picture]→[(name of photo album)]

Once you have selected a photo album, just simply hit [Enter] or double click to start a photo slide show.



05_005

Note

Setting Intervals for Photo Slide Show

From the IC-TV menu, **[Picture]→[Setting]→[Interval]**, you can choose a time interval between 1 ~ 10 seconds.



05_006

6 Play Music

You can play music from IC-TV, and this section provides **information** in regards to the IC-TV music entertainment.

- Register music files to music album(s)
- Listen to music file(s)
- Change music file formats

Register Music Files

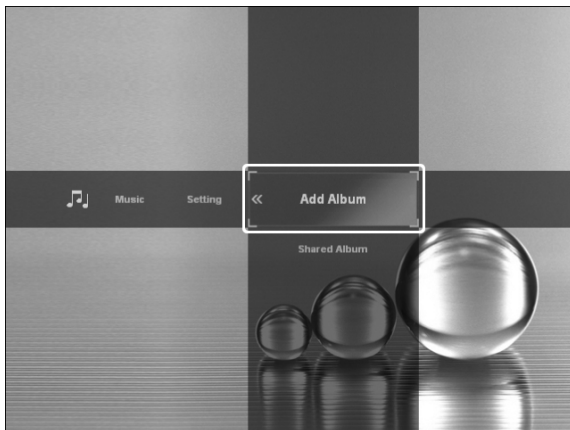
(1) Adding a Music Album

STEP1 Add Music Album

To listen to music files from IC-TV, you need to select and register music album(s).

Please follow **the steps below** from the IC-TV menu to add music album(s).

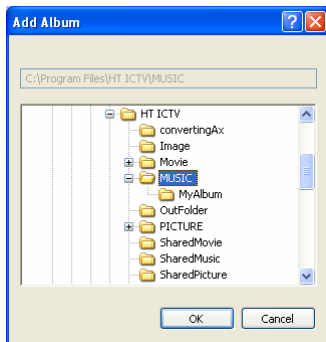
[Music]→[Setting]→[Add Album]



06_001

STEP2 Select a Folder

Please select a folder where you saved **your** music files(s) and click **[OK]** to add **it** as an album.



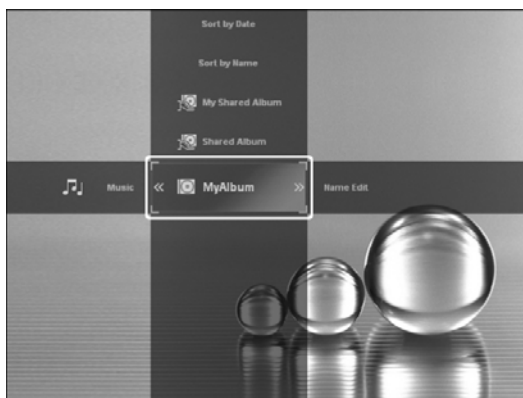
06_002

STEP3 View My Album

You can check whether **the** new album was added successfully.

Please follow the steps below from the IC-TV menu to see a list of music album(s).

[Music] → [My Album]



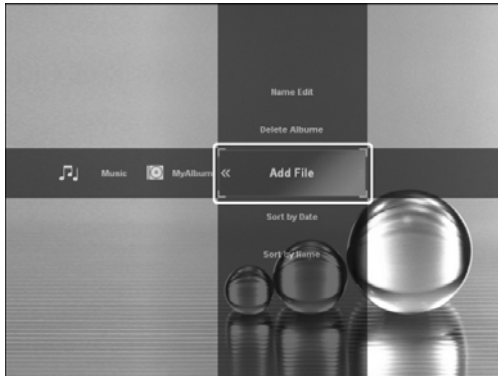
06_003

STEP1 Add More Music

You can add more music file(s) to existing music album(s).

Please follow **the steps below** from the IC-TV Menu.

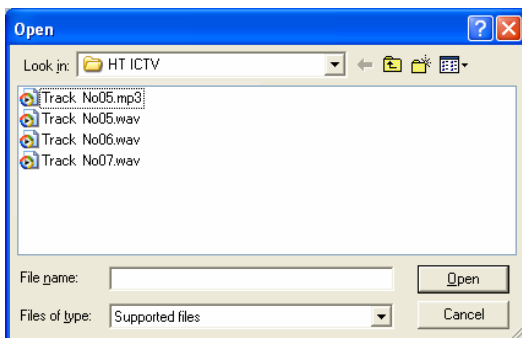
[Music]→[(name of music album)]→[Add file]



06_021

STEP2 Select Files to Add

Double click your selected file(s) or hit **[Open]** to add music files to the music album.



06_022

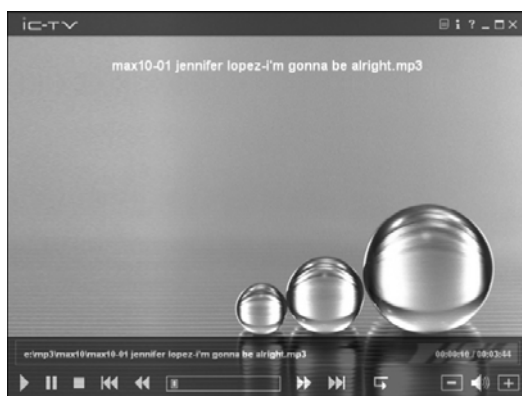
Please follow **the steps below** from the IC-TV menu to find music files(s) you want to play.

[Music]→[(name of music album)]

You can listen to music file(s) by double clicking or hit **[Enter]** while **the** music file(s) or album is selected. Music files are played in **alphabetical** order.



06_004



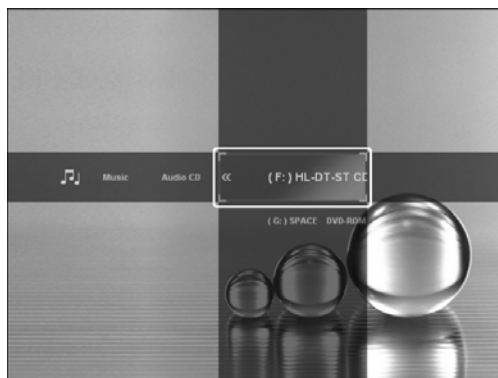
06_005

(1) Play CD Album/Music

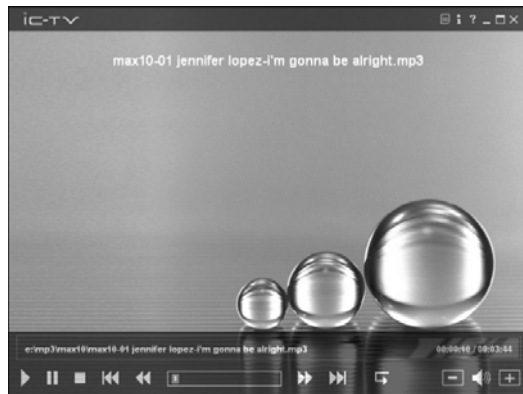
Please follow **the steps below** from the IC-TV menu to locate a Music CD you want to play.

[Music]→[Audio CD]→ [(name of drive)]

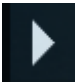


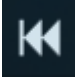




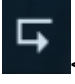

You can play the CD by double clicking or hit **[Enter]** while **the** Music CD or drive is selected. **The CD will be** played in order of tracks.



06_006



06_007

| Audio Player Operation | |
|--|---|
|  <06_011> | Play Music |
|  <06_012> | Pause |
|  <06_013> | Stop |
|  <06_014> | Move to previous music/track |
|  <06_015> | Rewind |
|  <06_016> | Time stamp or location bar for playing music. You can move this bar to a specific position and continue to play music |
|  <06_017> | Fast forward |
|  <06_018> | Move to next music/track |
|  <06_019> | Repeat the entire album or a song |
|  <06_020> | Adjust Volume Control |

2) Music File Conversion^s

STEP1 Go to the Menu Screen for File Conversion.

Do you want to convert a music file to a different format?

Please follow **the red steps below** from the IC-TV menu.

[Music]→[(name of music album)]→[(name of music file)]→[Convert]



STEP 2 Preparation for Conversion

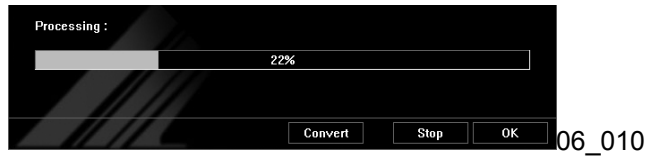
Please choose input & output file names and a format for conversion.



| | |
|------------------|--|
| Input file name | Indicates original file name and its location. |
| Output file Name | Indicates output file name after conversion and its folder location. |
| Convert Format | Choose a format for conversion |
| Processing Bar | Helpful for monitoring conversion and its completion. |

STEP3 Start Conversion

Once selections are made in Step 2, you can click **[Convert]** to start the file conversion.



STEP4 Wait for Conversion to Complete

Conversion takes time thus it requires your patience. You can monitor the progress from the processing (%) bar.

7 Play Movie

This section contains information for movie viewers.

- Register AV files or Movie Clips to IC-TV album(s)
- Play AV files or Movie Clips
- Change formats for AV files or Movie Clips

1) Register Movie Clips

(1) Adding A Movie Album

STEP1 Add a Movie Album

In order to watch a movie from IC-TV, you need to select and register movie album(s).

Please follow the steps below from the IC-TV menu to add movie album(s).

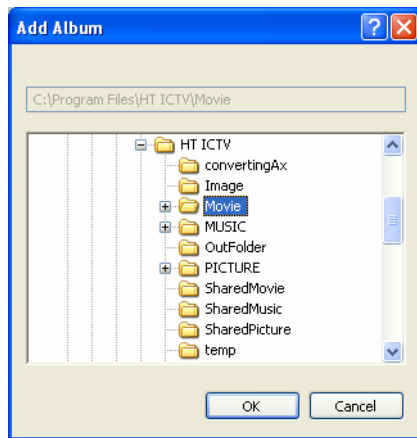
[Movie]→[Setting]→[Add Album]



07_001

STEP2 Select a Folder

Please select a folder where you saved **your** movie files(s) and click **[OK]** to add an album.



07_002

STEP3 View My Album

You can check whether **the** new album was added successfully.

Please follow **the steps below** from the IC-TV menu to see a list of movie album(s).

[Movie] → [(name of movie album)]



07_003

STEP1 Add More Movie(s)

You can add more movie file(s) to existing movie album(s).

Please follow **the steps below** from the IC-TV Menu.

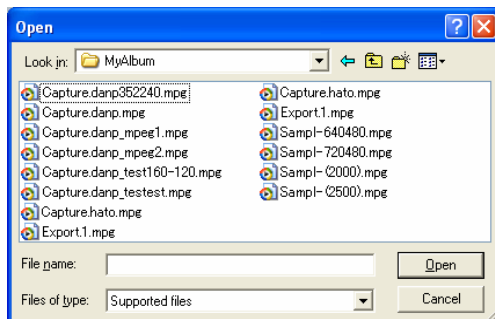
[Movie]→[(name of movie album)]→[Add file]



07_019

STEP2 Select Files to Add

Double click your selected file(s) or hit **[Open]** to add movie files to the album.



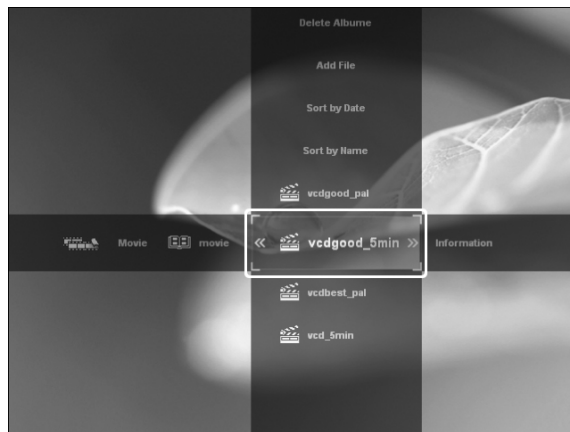
07_020

2) Play Movies

To find the **movie** files you want to play, please follow **the steps below** from the IC-TV menu

[Movie]→[(name of movie album)]





You can play movie files by double clicking or hit **[Enter]** while a file or movie album is selected. Movie files are played in **alphabetical** order.

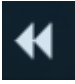


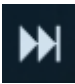
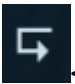



07_004



07_005

| Movie Player Operation | |
|--|------------------------------|
|  <07_009.bmp> | Play Movie Clips |
|  <07_010.bmp> | Pause |
|  <07_011.bmp> | Stop |
|  <07_012.bmp> | Move to previous track/scene |

| | |
|--|---|
|  <07_013.bmp> | Slowly Rewind |
|  <07_014.bmp> | Time stamp or location bar for playing a movie. You can move this bar to a specific position and continue to play the movie |
|  <07_015.bmp> | Fast forward |
|  <07_016.bmp> | Move to next track/scene |
|  <07_017.bmp> | Repeat play |
|  <07_018.bmp> | Adjust Volume Control |

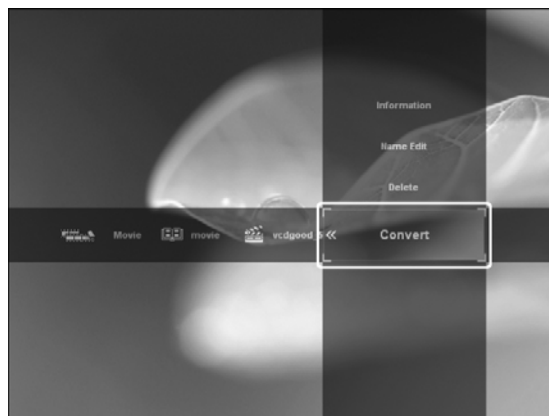
3) Movie File Conversions

STEP1 Go to the Menu Screen for File Conversions.

Do you want to convert a movie file to a different format?

Please follow the steps below from the IC-TV menu.

[Movie]→[(name of movie album)]→[(name of movie file)]→[Convert]



07_006

STEP 2 Preparation for Conversion

Please choose input & output files and a format for conversion.

| | |
|------------------|--|
| Input file name | Indicates original file name and its location. |
| Output file Name | Indicates output file name after conversion and its folder location. |
| Convert Format | Choose a format for conversion |
| 변환상황 | Helpful for monitoring conversion and its completion. |

STEP3 Start Conversion

Once selections are made in Step 2, you can click [**Convert**] to start the file conversion.

STEP4 Wait for Conversion to Complete

Conversion takes time thus it requires your patience. You can monitor the progress from the processing (%) bar.