

FCC Information

This device complies with Part 15 of the FCC Rules. Operation is subject to the following two conditions:

- (1) This Device may not cause harmful interface, and
- (2) This device must accept any interference received, including interference that may cause undesired operation.

Note: This equipment has been tested and found to comply with the limits for CLASS B digital device, pursuant to Part 15 of FCC Rules. These limits are designed to provide reasonable protection against harmful interference when the equipment is operated in a commercial environment. This equipment generates, uses and can radiate radio frequency energy and, if not installed and used in accordance with the instructions, may cause harmful interference to radio communications. However, there is no guarantee that interference will not occur in a particular installation. If this equipment does cause harmful interference to radio or television reception, which can be determined by turning the equipment off and on, the user is encouraged to try correct the interference by one or more of the following measures:

- 1.1. Reorient or relocate the receiving antenna.
- 1.2. Increase the separation between the equipment and receiver.
- 1.3. Connect the equipment into an outlet on a circuit different from that to which receiver is connected.
- 1.4. Consult the dealer or experienced radio/TV technician for help.

WARNING

Changes or modifications not expressly approved by the manufacturer could void the user's authority to operate the equipment.

IC-TV Functions

IC-TV is an integrated suite of powerful features.

Watching TV

You can watch TV by using IC-TV. With IC-TV's built-in auto channel scan feature, you can watch any channel that you have, very conveniently, just as you do with your TV.

Recording TV Program

Using IC-TV, you can record any TV program that you want in real time or you can schedule your recording in advance. Having IC-TV means having your own digital PVR (personal video recorder) system. You can record your TV programs and archive them as MPEG1, MPEG-2 files as well as 3GPP. (If you have a 3G mobile phone, or 3GPP-supported multimedia portable device, you can replay them on these devices as well.)

Using the Titan TV program, all that you need to do to schedule your recording is simply click on to the TV program that you wish to record.

Browsing Your Photos

You can use IC-TV as your photo browser as well. You can browse photos individually or enjoy them as a slide show. JPEG and BMP file formats are supported.

Listening to Audio

You can use IC-TV as your music player for your audio CDs as well as your other archive audio files such as WAV, WMA, MP3 files.

Converting Audio File Formats

For your convenience, you can convert your audio file formats. For example, you can convert your WAV file to MP3 files to save your disc space, or vice versa. Any file format converting from WAV, WMV, or MP3 to others is supported.

Watching Movies

You can watch virtually all video files by using IC-TV*. MPEG1/2, DivX, MP4, WMV, DV, and so on.

※ For each video format, IC-TV needs to have a corresponding codec.

Converting Movie Files

By using IC-TV's built-in movie encoding ability, you can convert your AVI movie files to MPEG-1, MPEG-2, or 3GPP format movies.

Multimedia File Sharing

In your Network Neighborhood, you can share your multimedia files with other IC-TV users. You can allow other users to access your multimedia files, and vice versa, for your fun and convenience.

Watching DVD

You can use IC-TV as your DVD player to watch your favorite DVD movie. AC-3 Multi-channel audio is supported.

Table of Content

End User License Agreement

Overview of Steps

1-1. System Requirements

1. Installation Guide

1.1. Welcome to the IC-TV MEDIA CENTER Installation Guide.

1.2. Install the 'MSXLM setup program'.

1.3. Install the 'Windows Media Format 9'.

1.4 Install the 'InterVideos WINDVD 5'.

1.5 Install the h/w device driver of capture device on Windows XP.

1.6 Install the h/w device driver of capture device on Windows 2000.

2. How To Start and Close the IC-TV program

1.1 Start IC-TV

1.2 To close the program

3. USER'S GUIDE

A. Operation Manual

B. Settings

4. TV

4.1

Watching TV

i. Select an Input Source

ii. Watch TV

B. Recording TV

i. Change storage location for Audio Video Clips

ii. Save Files

iii. Select Recording Format

C. To Schedule Recording for TV Program

i. To Schedule a Recording with EPG

ii. To Manually Schedule a Recording

iii. Check Recording Schedule(s)

D. Select Recorded Program

E. File Burning

4.5.1. Settings

4.5.2. How to Initiate Burning

- F. File Conversion
 - 4.6.1. Go to the Screen for File Conversion.
 - 4.6.2 Preparation for Conversion
 - 4.6.3. Start Conversion
 - 4.6.4. Wait for Conversion to Complete
- 5. Options for Pictures
 - A. Registering Pictures
 - 5.1.1. Photo Album
 - 5.1.2. Adding More Pictures
 - B. View Pictures
 - C. Photo Slide Show
- 6. Play Music
 - 6.1. Register Music Files
 - 6.1.1. Adding a Music Album
 - 6.1.2. Add More Music
 - 6.2. Listen to Music
 - 6.2.1. Play Audio Files
 - 6.2.2. Play CD Albums/Music
 - 6.3. Music File Conversion
 - 6.3.1. Go to the Menu Screen for File Conversion
 - 6.3.2. Preparation for Conversion
 - 6.3.3. Start Conversion
 - 6.3.4. Wait for Conversion to Complete
- 7. Play Movies
 - 7.1. Register Movie Clips
 - 7.1.1. Adding a Movie Album
 - 7.1.2. Add More Movies
 - 7.2. Play Movies
 - 7.3. Movie File Conversion
 - 7.3.1. Go to the Menu Screen for File Conversion
 - 7.3.2. Preparation for Conversion
 - 7.3.3. Start Conversion
- 8. Play DVD
 - 8.1. Play DVD
- 9. Sharing Multimedia Files
 - 9.1. My Sharing Album

9.1.1. Shared Albums

9.1.2. File Sharing Activation

9.1.3. Inactivate File Sharing

9.2. Other User's Shared Album

9.2.1. Open Sharing File

9.2.2. Access to Sharing Files with Password Protection

10. Uninstall IC-TV

1. Installation Guide

1.1. Welcome to the IC-TV MEDIA CENTER Installation Guide.

First, you need to install the IC-TV MEDIA CENTER program to a PC. Please follow the instructions below, which will guide you through the installation procedure.

Note:

- * It is best to utilize the defragmenter for your HDD (hard disk drive) before the installation.

- From the Windows Start Menu click

Start/All programs/Accessories/System Tools/Disk Defragmenter

- * If there is any security software in your PC that may block or interfere with the installation, please put the setting to “off” for proper installation.

1.1.1. Insert the IC-TV MEDIA CENTER installation CD into a CD-ROM or an ODD (Optical Disk Drive) device.

Autorun will display the Installation Screen corresponding to the IC-TV MEDIA CENTER program.

Please click [**Install**] to start the process.

Note:

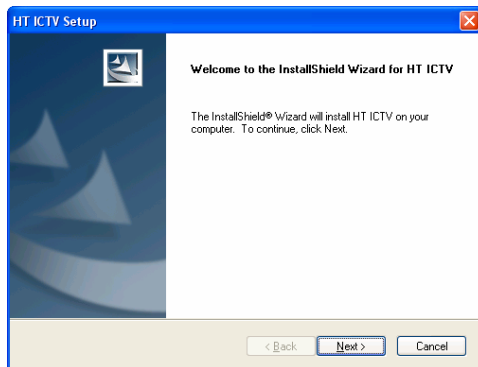
If Autorun does not start, choose **Run** from the Windows **Start** Menu.

Assuming your CR-ROM drive is the D drive, type “**d:\autorun**” in the Run dialog box..

Second option is to find the “**setup.exe**” file through Windows Explorer or My Computer, and double click or open the file to start the installation.

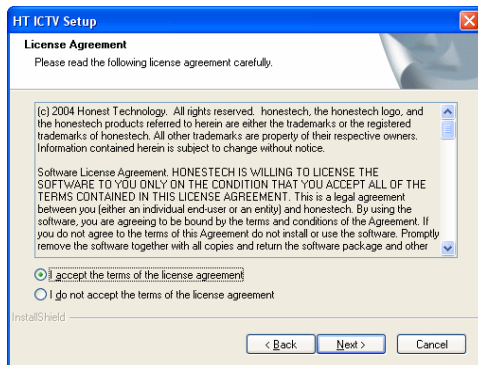
1.1.2. Click on the [**Install**] button to start your IC-TV MEDIA CENTER program installation.

1.1.3. Please click [**NEXT**] and follow through the installation steps.



01_001

1.1.4. In order to proceed with the installation, you must read and confirm the **License Agreement**. Please read the following license agreement carefully, and check whether you agree with the license agreement. Click on [**NEXT**] to indicate your acceptance of the provisions of this license agreement.

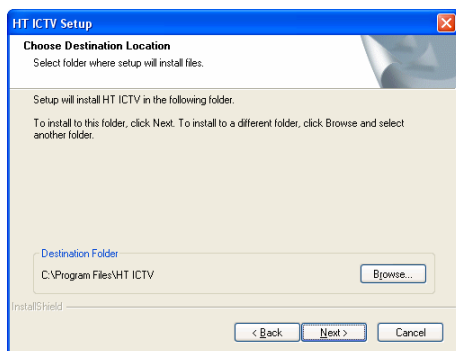


01_002

1.1.5. Here you have to select a folder location to install the program. Unless you specify a custom location by browsing or creating a new folder, a default folder location is **C:\Program Files\honestech My IC-TV Media Center**” for your convenience. If you are satisfied with the location, please click on **[NEXT]** to continue with the installation.

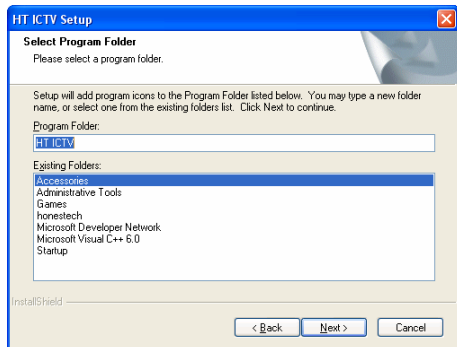
<Warning>

Installing the program on an external HDD or any other external storage device may create an error on running the program. HT Inc. highly recommends that an internal HDD is used as a folder location.



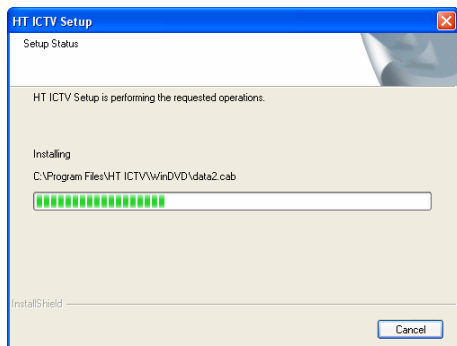
01_003

1.1.6. To access the IC-TV MEDIA CENTER program, please select a program folder where you will add program icons. You may type a new folder name or select one from the list. Or just click **[NEXT]** to go along with a recommended default setting. After your final selection, click **[NEXT]** to continue.



01_004

1.1.7. The installation is in progress. Please wait for completion.



01_005

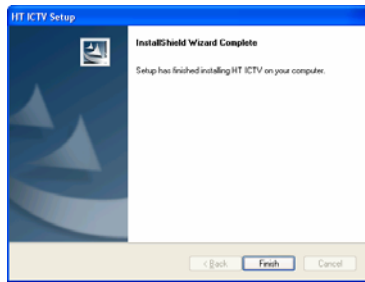
* Notice A) At this step the installation procedure will install the “MSMXL setup program” which will be used to support schedule recording by Titantv EPG web-sites. For the installation of “MSMXL setup program”, please refer to the “1.2. Install the ‘MSXML setup program’”

* Notice B) After that the installation procedure will install the “Windows Media Format 9” which will be used to support WMV format in IC-TV MEDIA CENTER ‘s file conversion function. For the installation of “Windows Media Format 9”, please refer to the “1.3. Install the ‘Windows Media Format 9’”

* Notice C) After that the installation procedure will install the “InterVideo WINDVD 5” which will be used to support IC-TV MEDIA CENTER ‘s DVD Player function. For the installation of “InterVideo WINDVD 5”, please refer to the “1.4. Install the ‘InterVideo WINDVD 5’”

1.1.8. After completion, you will see a pop-up screen indicating the end of the installation.

Please click [**FINISH**] to complete the installation.



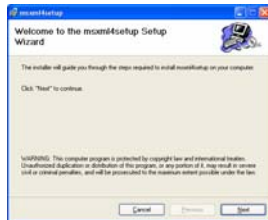
01_006

1.1.9 A capture device is included in this package. To use your capture device, you must first install the h/w device driver. Our installation program will install the h/w device driver continually. For the installation of capture device, please refer to the “1.5 Install the H/W device driver of capture device on Windows XP” or “1.6 Install the H/W device driver of capture device on Windows 2000”.

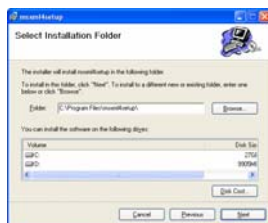
1.2. Install the 'MSXML setup program'.

1.2.1. The following installation dialog will be shown.

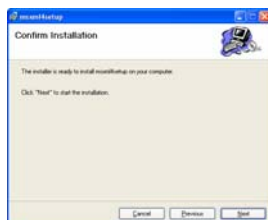
Please click on the **[NEXT]** button to start installation.



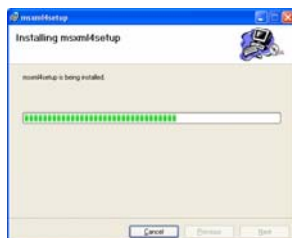
1.2.2. Here you have to select a folder location to install the program. Unless you specify a custom location by browsing or creating a new folder, a default folder location is **C:\Program Files\msxml4setup** for your convenience. If you are satisfied with the location, please click on **[NEXT]** to continue with the installation.



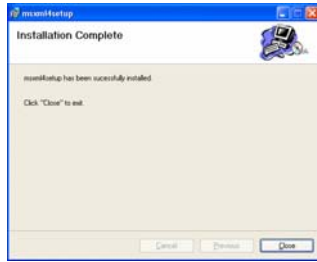
1.2.3. Please just click on **[NEXT]** button to continue.



1.2.4. The installation is in progress. Please wait for completion.



1.2.5. After completion, you will see a pop-up screen indicating the end of the installation. Please click **[Close]** to complete the installation.



1.3. Install the 'Windows Media Format 9'.

1.3.1. This install procedure is very simple.

Please click on the [Yes] button to start installation.

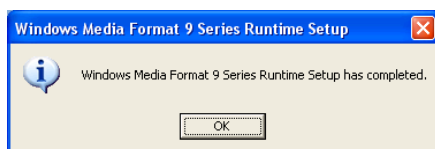


1.3.2. In order to proceed with the installation, you must read and confirm the **License Agreement**. Please read the following license agreement carefully, and check whether you agree with the license agreement. Click on [Yes] to indicate your acceptance of the provisions of this license agreement.



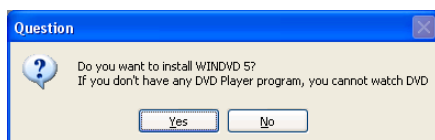
1.3.3. After completion, you will see a pop-up screen indicating the end of the installation.

Please click [OK] to complete the installation.



1.4 Install the 'InterVideos WINDVD 5'.

1.4.1. Click on the [Yes] button to start to install this software



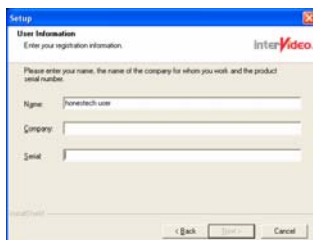
1.4.2. Please just click the [NEXT] button to continue.



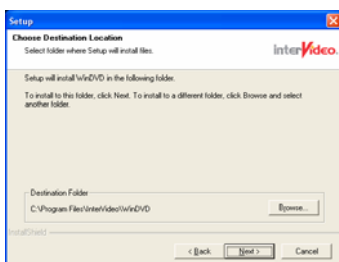
1.4.3. In order to proceed with the installation, you must read and confirm the **License Agreement**. Please read the following license agreement carefully, and check whether you agree with the license agreement. Click on **[Yes]** to indicate your acceptance of the provisions of this license agreement.



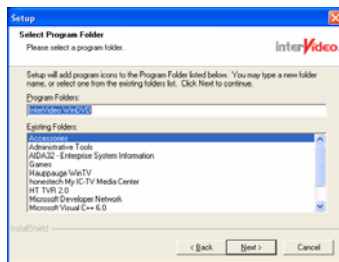
1.4.4. The following screen will require you to input your Name and Serial Number to continue the installation procedure. Please input the right WinDVD's Serial number, which is printed on your IC-TV MEDIA CENTER manual or Installation CD surface. After you input the right Serial number, please click the **[NEXT]** button to continue.



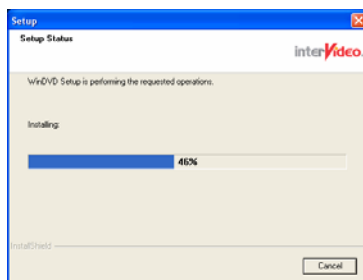
1.4.5. Here you have to select a folder location to install the program. Unless you specify a custom location by browsing or creating a new folder, a default folder location is **C:\Program Files\InterVideo\WinDVD™** for your convenience. If you are satisfied with the location, please click on **[NEXT]** to continue with the installation.



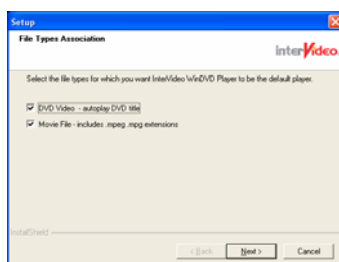
1.4.6. To access the InterVideo WinDVD program, please select a program folder where you will add program icons. You may type a new folder name or select one from the list. Or just click [NEXT] to go along with a recommended default setting. After your final selection, click [NEXT] to continue.



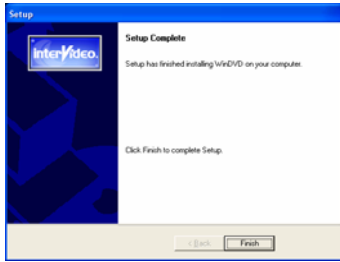
1.4.7. The installation is in progress. Please wait for completion.



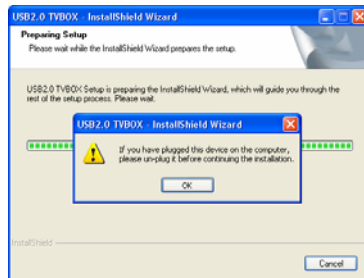
1.4.8. In this step you can select the file types to decide whether you wish for InterVideo's WinDVD player to become the default player or not. After selecting your choice, please click on the [NEXT] button to continue.



1.4.9. After completion, you will see a pop-up screen indicating the end of the installation. Please click [Finish] to complete the installation.

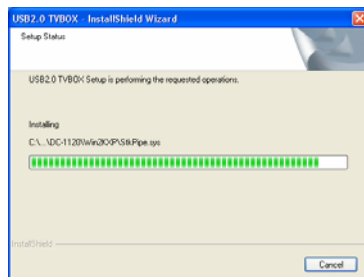


Then click **[OK]** button to start installing the h/w device driver.



<XP1-1.bmp>

1.5.2 The necessary h/w device driver files will be copied.



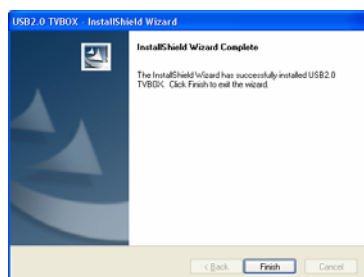
<XP1-2.bmp>

1.5.3 When you see the dialog below, just click on **[Continue Anyway]** button.



<XP1-3.bmp>

1.5.4 The necessary h/w device driver files were copied. Please click on **[FINISH]** button to continue.



<XP1-4.bmp>

1.5.5 In the next step, you can see a pop-up screen as below. Please connect your capture device to your computer now. Your computer will find the new capture device and install it

automatically.



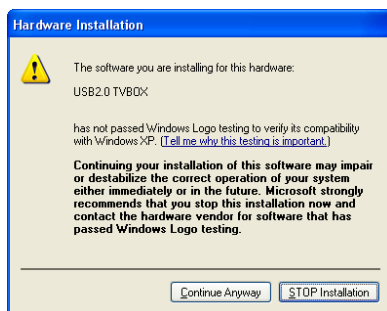
<XP1-5.bmp>

1.5.6 You can continue the h/w device driver installation procedure by clicking on **[NEXT>]** button.



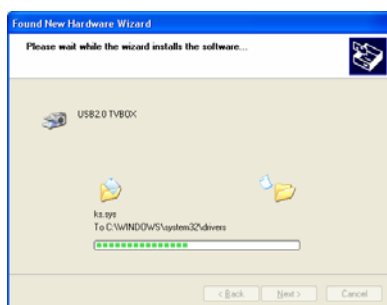
<XP2-1.bmp>

1.5.7 When you see the dialog below, just click on **[Continue Anyway]** button.



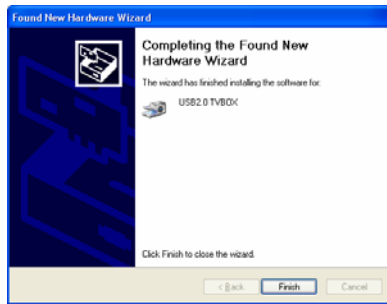
<XP2-2.bmp>

1.5.8. The installation is in progress. Please wait for completion.



<XP2-3.bmp>

1.5.9. Please click **[FINISH]** button to complete.



<XP2-4.bmp>

1.5.10 In the last step of h/w device driver installation, your computer will install “USB Audio Device.”

The installation procedure will proceed automatically. Please wait for completion.

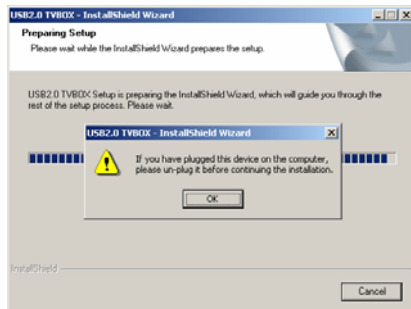


<XP2-5.bmp>

1.6 Install the h/w device driver of capture device on Windows 2000.

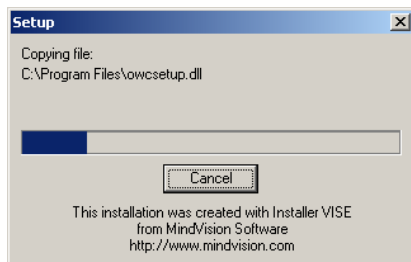
1.6.1 You can see the dialog below. As you can see from the dialog, if you already have connected your capture device to your computer, please disconnect it now.

And click on **[OK]** button to start installing the h/w device driver.



<TT1-1.bmp>

1.6.2 The necessary h/w device driver files will be copied.



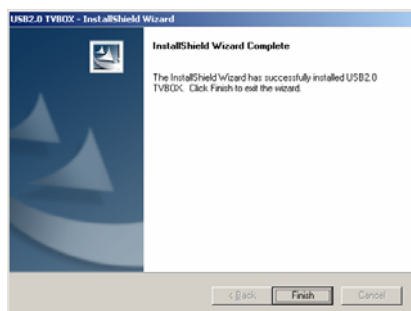
<TT1-2.bmp>

1.6.3 When you see the dialog below, just click on **[Yes]** button.



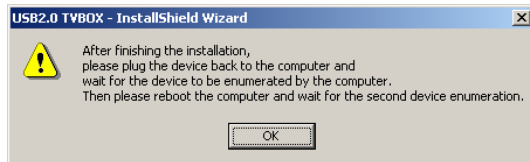
<TT1-3.bmp>

1.6.4 The necessary h/w device driver files were copied. Please click on **[FINISH]** button to continue.



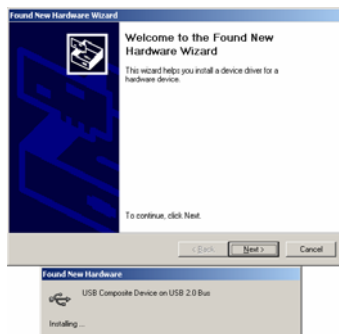
<TT1-4.bmp>

1.6.5 In the next step, you can see a pop-up screen as below. Please connect your capture device to your computer now. Your computer will find the new capture device and install it automatically.



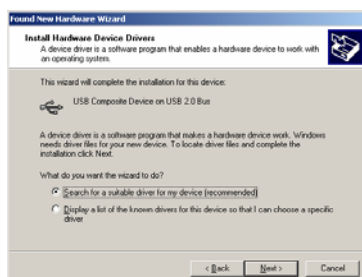
<TT1-5.bmp>

1.6.6 You can continue the h/w device driver installation procedure by clicking on [NEXT>] button.



<TT2-1.bmp>

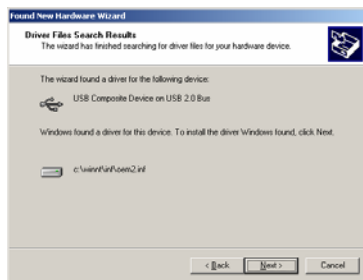
1.6.7 Please click on [NEXT>] button to continue



1.6.8 Please click on [NEXT>] button to continue. You need not select anything in check boxes below.



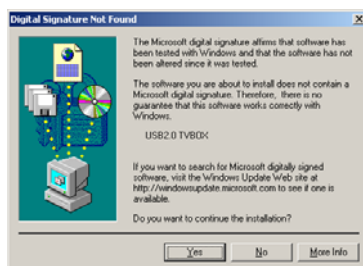
1.6.9 Please click on [NEXT>] button to continue.



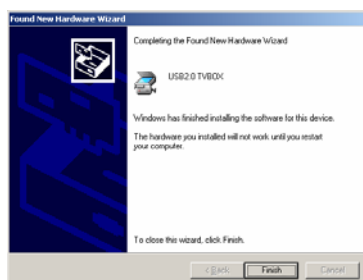
1.6.10 Please click on **[FINISH]** button to continue.



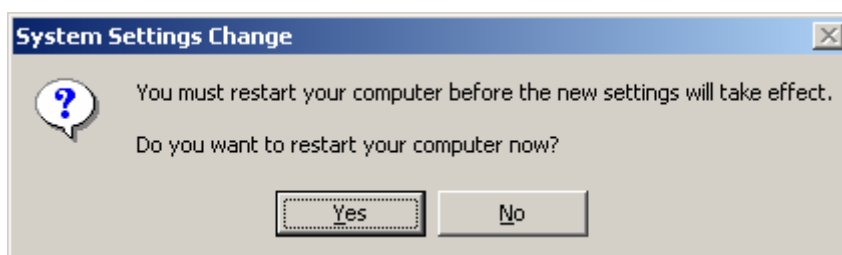
1.6.11 Please click on **[Yes]** button to continue.



1.6.12. Please just click the **[FINISH]** button to complete.



1.6.13 Now h/w device driver installation is completed. For more stable working of the new capture device, please restart your computer now.



2 . How To Start and Close **the** IC-TV program

1) Start IC-TV

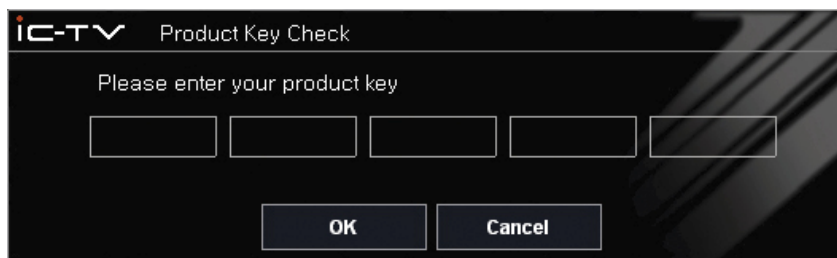
From Windows, you may click on **the** IC-TV icon or go through **the steps below** from **the** Windows Menu to start **the** IC-TV program.

[Start]→[Programs]→[HT ICTV]→[HT ICTV]



02_001

The initial screen will require you to insert **your** Product **Registration** Key to start the IC-TV.



02_002

Please insert **your** Product **Registration** Key, which is printed on your IC-TV manual.
After **you** type in the Product **Registration** Key, please click [OK] to continue.

1) To close the program

The IC-TV program can be **closed** by hitting **the** [ESC] key on your keyboard.

3. USER'S GUIDE

1) Operations Manual

Helpful Guide and Reference to **the** IC-TV interface.

Move selection up	Use [↑] arrow on keyboard
Move selection down	Use[↓] arrow on keyboard
Move selection to right	Use[→] arrow on keyboard
Move selection to left	Use[←] arrow on keyboard
Execute your selection	Hit [Enter] key while your selection is highlighted.
Show or Hide Menu	You can change options to show or hide the menu by using [M] or [-] key on the numbered pad.
Move to next selection	Use [Tab] on the keyboard to move to the next category or selection.
Quit or Exit IC-TV program	Use [ESC] on the keyboard to close the IC-TV program.

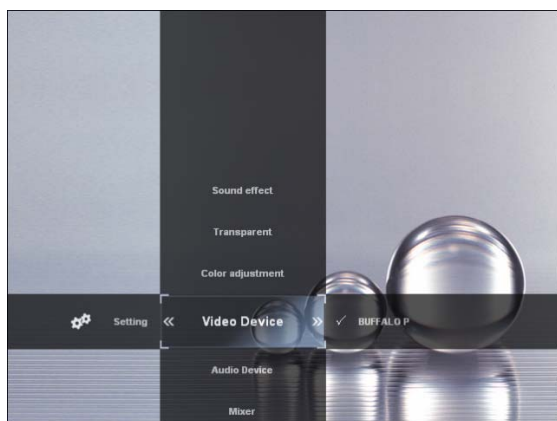
2) Settings

Please pay attention to **the instructions below** as it is very important for **a** first time user to understand **the** appropriate settings.

Select a Video Device

A Video Device can be selected from the IC-TV menu.

[Setting]→[Video Device]

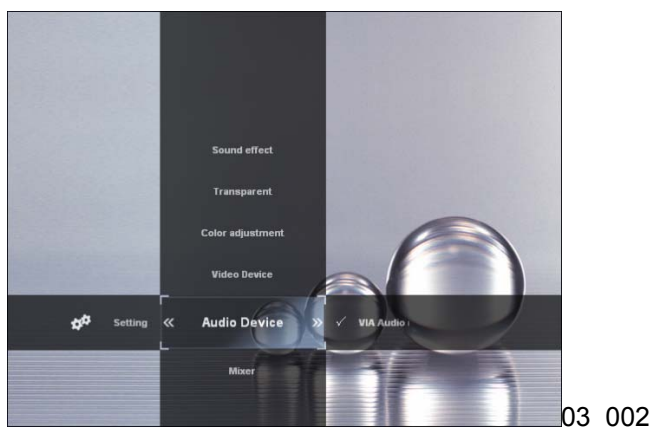


03_001

Select an Audio Device

An Audio Device can be selected from the IC-TV menu.

[Setting]→[Audio Device]



03_002

For recording along with audio/sound effects from a TV or other video **device**, you need to have a proper setting for the **[Line In]**.

The **[Line In]** can be selected from the IC-TV menu.

[Setting]→[Mixer] →[Line In]

※The recording may not capture audio effects properly if **the [Line In]** setting is not checked.

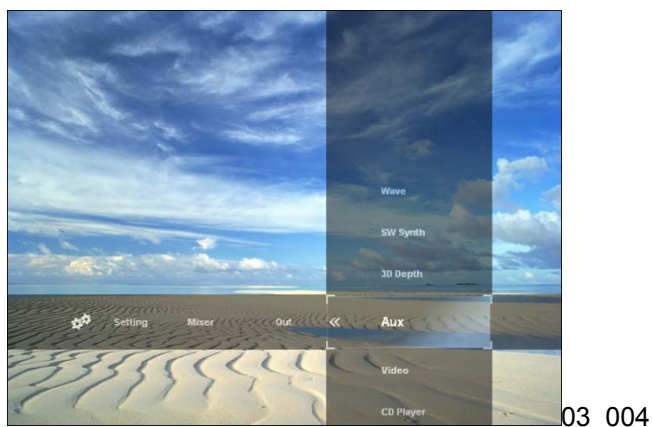


03_003

When watching TV or playing a multimedia program, you need to check **the** proper setting on the audio output setting.

The Audio Output Device can be selected from the IC-TV menu.

[Setting]→[Mixer] →[Out]



03_004

4 TV

This section explains how to utilize **the** IC-TV to view/record TV programs.

TV functions

- Watch TV
You can watch a TV program or a visual display from input sources such as TV, CATV, video, S-Video and others.
- Record TV
You can record TV programs from input sources such as TV, CATV, video and S-Video.
- Schedule Recording
You can either set a schedule manually or use EPG (Internet Electronic Program Guide) to record programs at your convenience.
- View Recorded Programs

You can watch previously recorded programs.
- Save or Convert Programs
You can save or burn recorded programs to DVD, VCD or super VCD format.
You can also convert file formats according to your preference.
- Change Formats
You can change or encode previously recorded programs to new formats, which provides flexibility for a user to watch the same program via different devices or formats. (VCD, SVCD, DVD, WMV, 3GPP)

4.1. Watching TV

STEP1 Select an Input Source

Please select a proper **[Input Source]** to watch TV.

An Input Source can be selected from the IC-TV menu **below**.

[TV]→[Setting]→[Input Source]

- a) Note: For **[Input Source]**, please see **the examples below**.
- b) Cable TV → **[Cable]**
- c) Video Input → **[Composite]**
- d) S-Video → **[S-Video]**

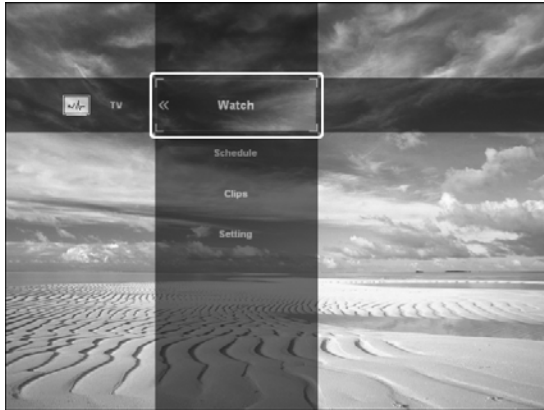


04_001

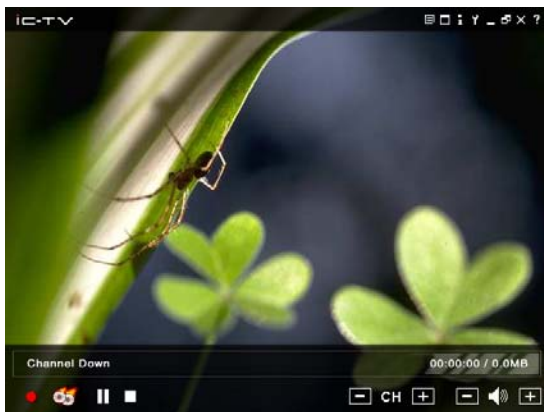
STEP2 Watch TV

After an Input Source is selected, you can watch TV from the IC-TV menu.

[TV]→[Watch]



04_002






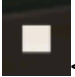
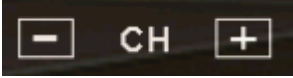
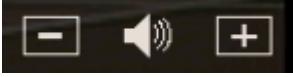
04_003








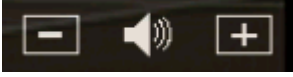
(Note)

Channel Auto Scan

This feature allows you to scan available channels, so **that** you can easily watch or record TV **programs**. While you are watching TV, please use **the** [M] key on **the** keyboard to **access** the IC-TV Menu and then follow **the steps below**.

[TV]→[Setting]→[Auto Scan]

Operation Guide / Buttons	
 <04_032.bmp>	Start Recording.
 <04_033.bmp>	Start Direct Burning. You can do this after recording.
 <04_034.bmp>	Enable Time Shift
 <04_035.bmp>	Stop Play/Recording
 <04_036.bmp>	Switch Channel
 <04_037.bmp>	Adjust Volume

* Operation Guide on Time Shift / Buttons	
 <08_003.bmp>	Play
 <08_004.bmp>	Pause
 <08_005.bmp>	Stop and goes back to TV mode
 <08_007.bmp>	Move To Previous Scene or Rewind
 <08_006.bmp>	Move to the beginning
 <08_009.bmp>	Move Forward or Fast Forward
 <08_010.bmp>	Move to the end
 <04_037.bmp>	Adjust Volume