

Netorage™

Quick Install Guide



Netorage 100 Series

PACKAGE CONTENTS

- 1 **NETORAGE** 100 Series (HDD is not included)
- Install CD
- AC adapter with power cord
- Ethernet Cable 1.2M Long
- 1 User's Manual
- Quick Install guide

1. HARDWARE REQUIREMENTS

- Broadband Connection via an external modem (xDSL/Cable)
- PC with Ethernet port (100BASE-T/NIC Card)
- Straight through Ethernet cable (included)
- Hard Drive (not included)

2. CHECK YOUR PC CONFIGURATION

- A TCP/IP must be set up on your PC.

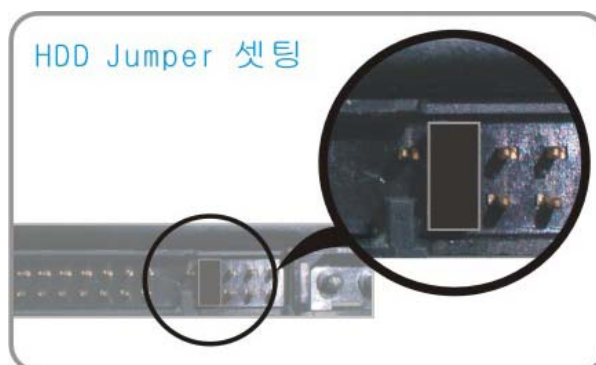
To do this, click on '**Start**' → '**Control Panel**' → '**Network and Internet Connections**' → '**Network Connections**' → In '**Network Connections**', right click '**Local Area Connection**' → from context menu, select **Properties** → Double click "**Internet Protocol (TCP/IP)**" → Select "**Obtain IP Address automatically**" and "**Obtain DNS server address automatically**".

- You PC will automatically obtain its IP address via DHCP

3. PUTTING TOGETHER YOUR NETORAGE HDD

You may use any desired **HDD** size for your **NETORAGE**. The following Pictures will guide you through setting up your **NETORAGE** HDD.

1. Make sure the jumper on the back of the **HDD** is set up as a "**Master**" HDD as show below:



2. Carefully open the **NETORAGE** Cover and with one hand, set the **HDD** as shown below:



3. With the other hand, connect the **2 cables** on the **NETORAGE** drive to the **HDD** as show below:



4. Once all wires are connected, insert the **HDD** into the **NETORAGE** Box. Make sure the **HDD** is secured in the **NETORAGE** box.



5. Line up the **NETORAGE** box cover to the box and carefully slide the cover in from the side. The side slots of the cover should line up to the inserts as shown below:



[WARNING]

Handle HDD with extreme caution.

In the case that the data stored in the HDD may be lost due to hardware maltreatment, make sure that the data in the HDD is backed up. We will not be responsible for any lost data.

4. SETTING UP A NETWORK AND CONNECTING TO THE INTERNET

Connect the **NETORAGE** box to your **PC** and **Modem** as show below:

Connecting Netorage to Modem:



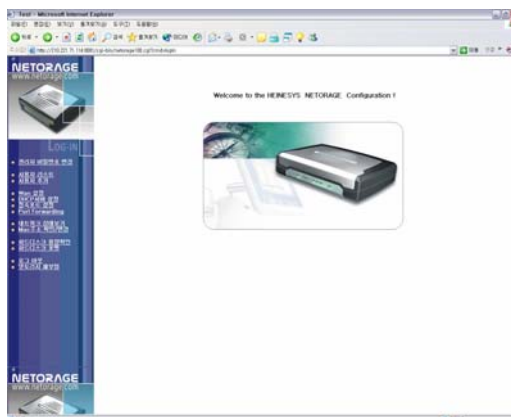
Connecting PC to Netorage:



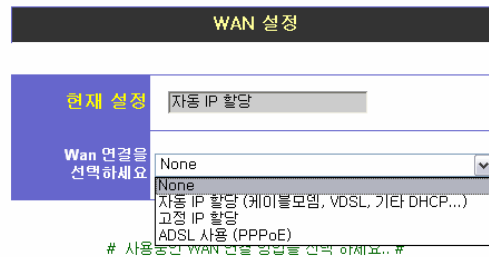
Connecting the **NETORAGE** to your **Internet modem** and **PC** will not establish an internet connection.

To establish an **Internet Connection** with **NETORAGE**:

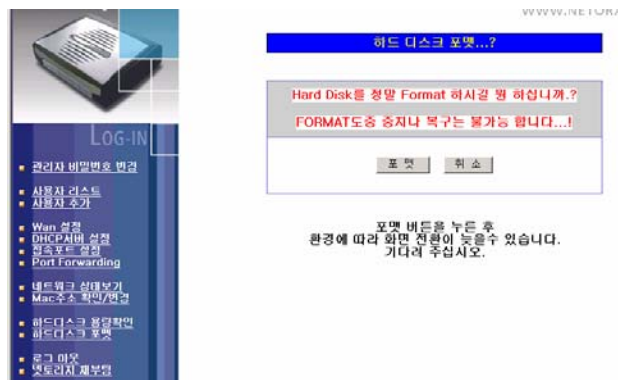
1. Open your Web browser. In the address bar, enter the following IP address.
<http://192.168.7.1:8080>
2. Press the key. Your Web browser will display Netorage's login screen. Enter the default ID '**admin**' and the password '**123456**'. press



- Once logged in, click on '**WAN setup**' on the left sidebar and select the desired internet service. Click on the tab to the right as shown below to see the different options.



- Click the **Yes** button and Netorage will restart by itself. Your PC is now connected to the internet.
- If the **HDD** being used for the **NETORAGE** is new, it will be necessary to format the **HDD**. To do this, click on '**Hard-drive format**'. The HDD formatting time will depend on the size of the hard-drive. A screen will appear once the HDD is fully formatted. Please wait patiently until the screen appears.



5. REGISTERING YOUR NETORAGE

Once your PC is connected to the internet, you may register your **NETORAGE** at the Netorage Webpage.

1. Open your Web browser. In the address bar, enter the following Web address:

<http://www.netorage.com>

2. Click the "Member Join" button when the Netorage's Web page loads. Fill in the fields to register as a new member.
3. After logging in, click on "My NETORAGE" and enter the product **Serial Number** located on the bottom of the product.

Click on the **Add** button to finish registration.

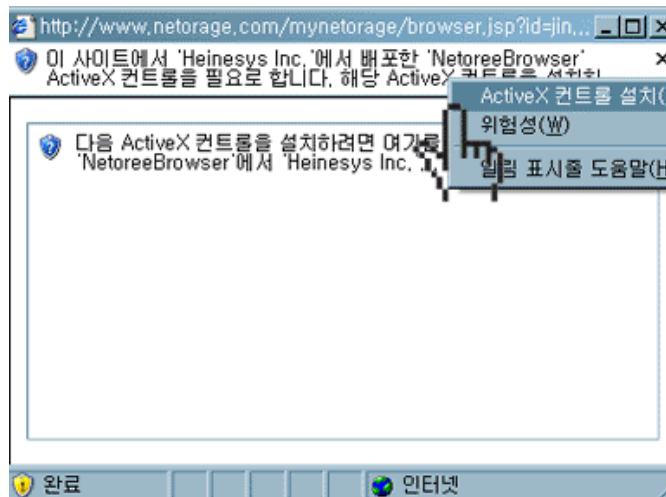
6. CONNECTING TO NETORAGE

When you want access Netorage, You may connect the Netorage Webpage.

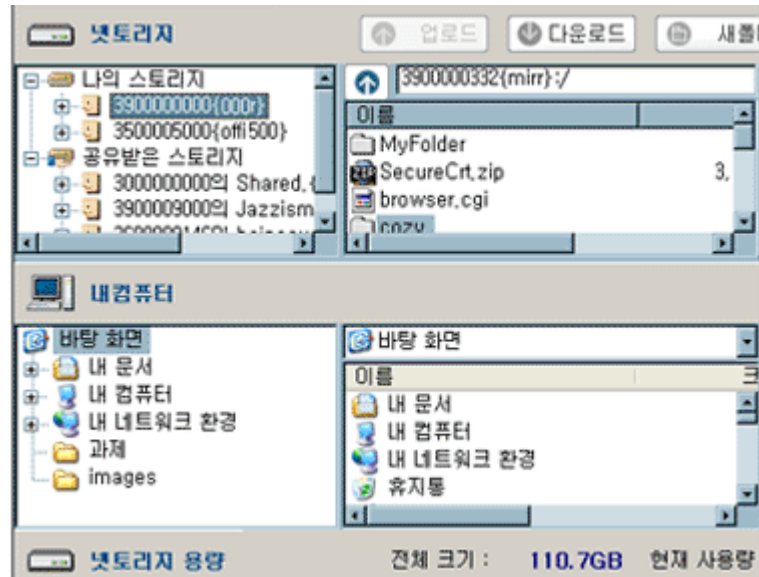
1. Open your web browser. In the address bar, enter the following web address : <http://www.netorage.com>
2. After login to Netorage website, Click 'Netorage Shortcut' button.



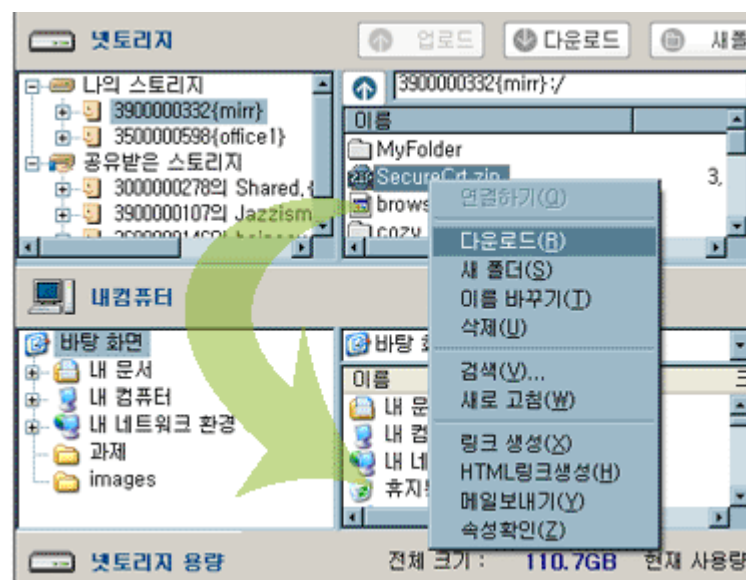
3. Install 'Netoree Browser'. Allow your system to install [ActiveX Control Install] when Windows XP SP2 is installed on your system.



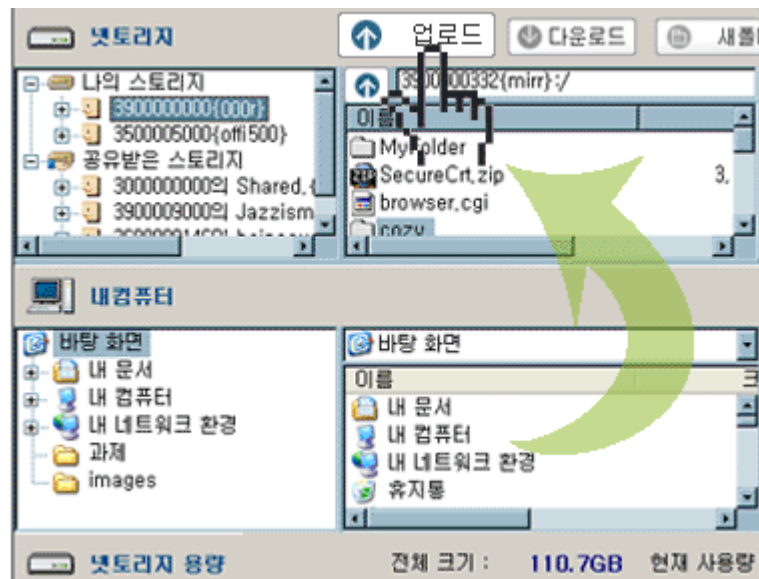
4. [Connect] The Netorage you have registered is listed under 'My Storage' and the Netorage you are allowed to use is listed under 'Shared Netorage'



5. [Download] To activate download, select file(s) in the Netorage pane, press right-mouse button and click 'Download', click 'Download' on the menu bar or drag & drop on the desired folder shown in My Computer pane



6. [Upload] To activate upload, select file(s) in My Computer pane, press right-mouse button and click 'Upload', click 'Upload' on the menu bar drag & drop on the desired folder shown in Netorage pane.



8. HOW TO CONTACT HEINESYS, INC.

Questions or concerns about Netorage or Heinesys Inc.? Please feel free to call or e-mail us, or refer to the **Q&A** forums located in our website.

HEINESYS, INC.

Sungkwang-Bldg.

456-13, Sungnae-Dong, Kangdong-Ku

Seoul, Korea, 134-848

What to do before you contact us:

If you wish to contact us for technical support, please have the following information available:

Product name, Model, Serial number, Software version number

Technical Support: (02) 470-4204

Customer Support: (080) 333-4704

E-mail Support: info@heinesys.com

Website: www.heinesys.com / www.netorage.com

FCC

This equipment has been tested and found to comply with limits for a class B digital device. Pursuant to Part 15 of the FCC Rules. These limits are designed to provide reasonable protection against harmful interference in a residential installation.

This equipment can generate, use, and radiate radio frequency energy and, if not installed and used in accordance with the instructions, may cause harmful interference to radio communications. However, there is no guarantee that interference will not occur in a particular installation.

If this equipment does cause unacceptable interference to radio and television reception, which can be determined by turning the equipment off and on, the user is encouraged to try to correct the interference by one or more of the following measures.

- Reorient or relocate the receiving antenna.
- Increase the separation between the equipment and receiver.
- Connect the equipment into an outlet on a circuit different from that to which the receiver is connected.
- Consult the dealer or an experienced Radio/TV technician for help.

Caution

Changes or modifications not expressly approved by the party responsible for compliance could void the user's authority to operate the equipment.