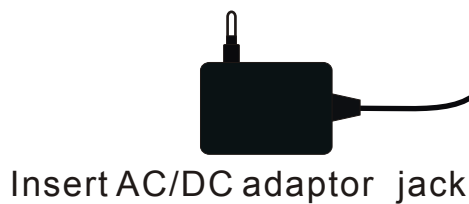
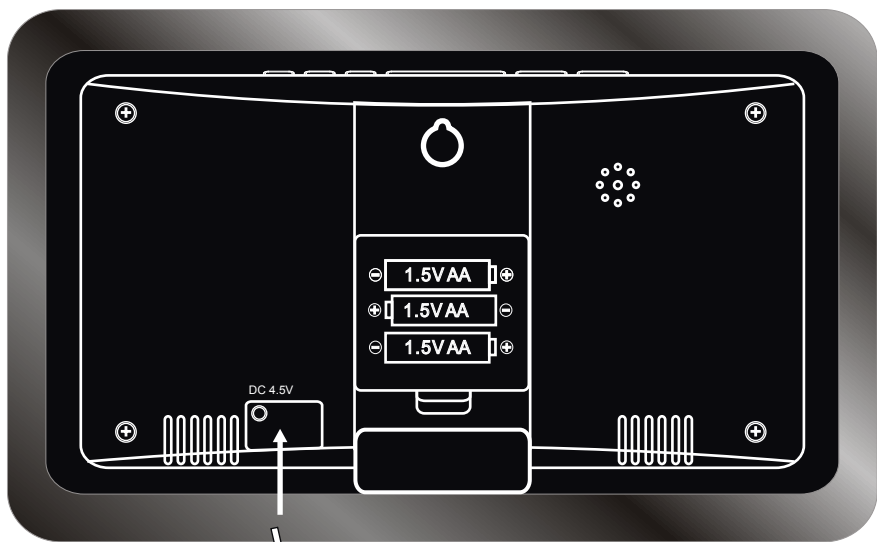
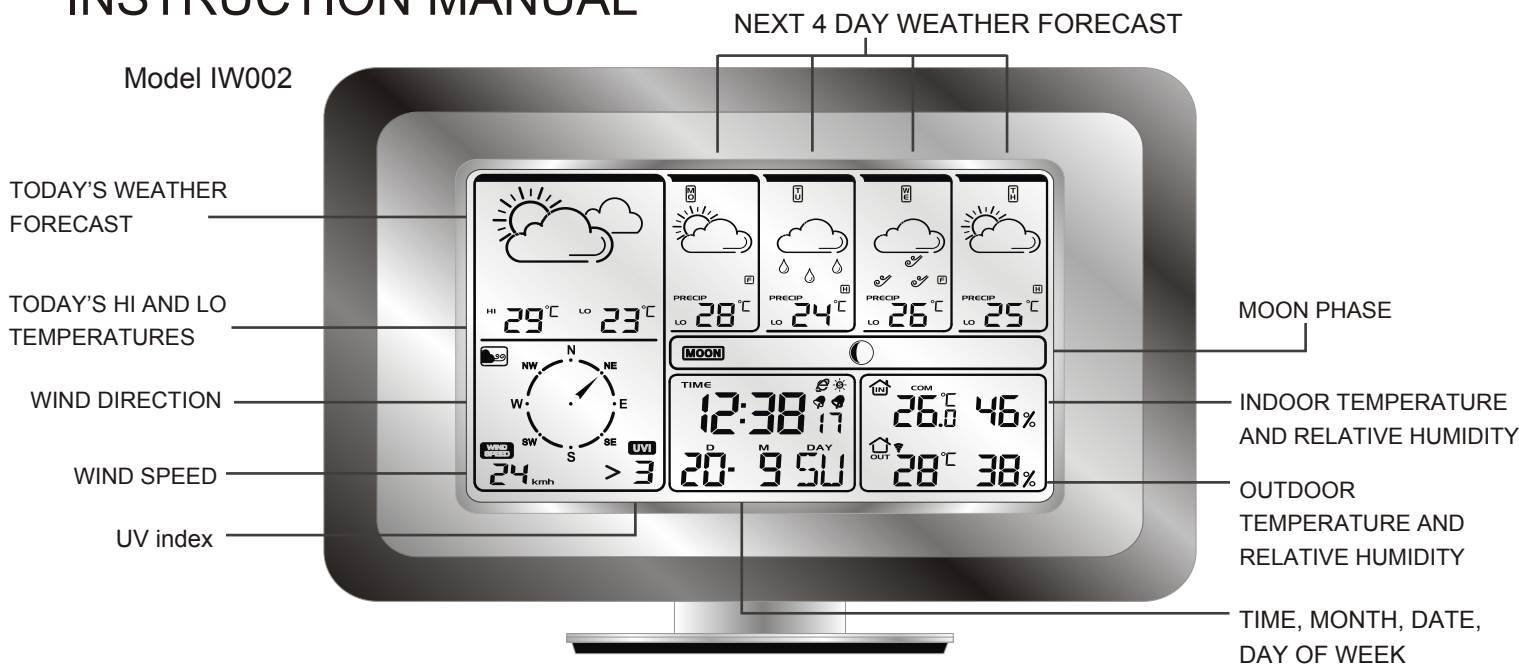


MODEL IW002 INTERNET WEATHER STATION

INSTRUCTION MANUAL

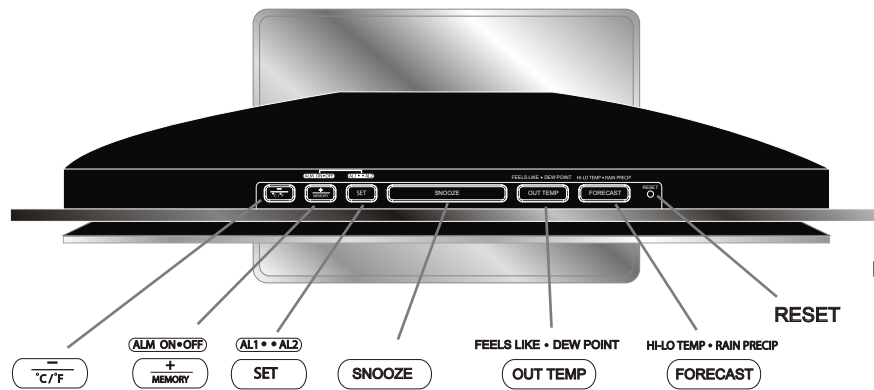


Insert the stand to the main unit

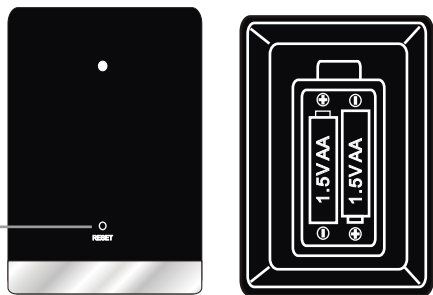
Model IW001U



Wireless USB



Model IW001T



Outdoor Temperature and Humidity Transmitter

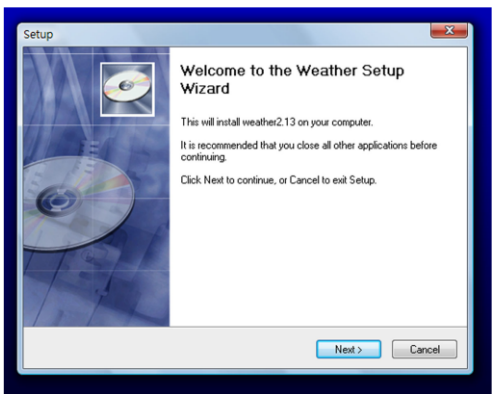
TO INSTALL YOUR INTERNET WEATHER STATION

- Step 1 Connect your computer on-line to the internet
- Step 2 Insert the wireless USB into your computer (lift up the antenna bar in vertical position for best transmission distance)
- Step 3 Insert the CD into your computer, the computer will automatically install the software (see below "To Install the weather.exe program on your computer")
- Step 4 Power up your internet weather station : plug the AC/DC adaptor to any household AC outlet, then insert the DC jack at the lower back case of your internet weather station. Then insert the stand to your internet weather station.
- Step 5 Now the weather data of the chosen city will be transmitted to your I-net weather station in a short moment.
- Step 6 After all 5-day weather data are displayed, then insert batteries (only 2 x AA to the right side of the battery compartment) to the outdoor temperature transmitter. The outdoor temperature and RH% will be transmitted to your internet weather station. Place your wireless transmitter to outdoor and it will keep transmitting the outdoor temperature and relative humidity to you internet weather station regularly.

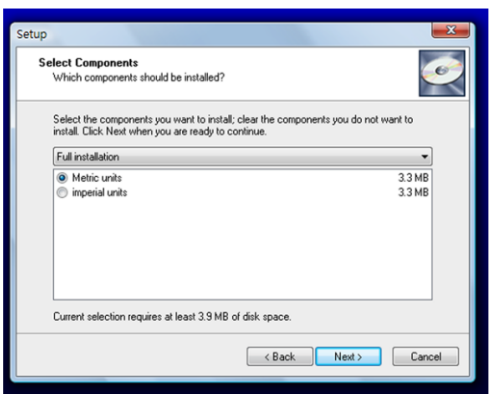
Your Internet weather station works with Microsoft OS XP, Vista or higher versions (Apple Mac OS not applicable)

TO INSTALL THE WEATHER PROGRAM ON YOUR COMPUTER

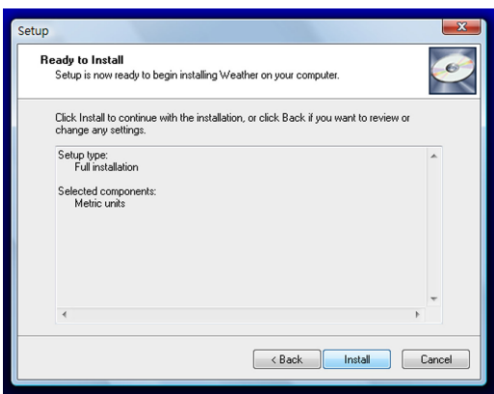
- Step 1 After inserted the CD into your computer, the weather.exe program is loaded. Please note that the weather.exe program in your CD may not be most up-dated. Your computer may ask if you want to up-date your installation program through the internet, click "YES".
- Step 2 Click "Next".
- Step 3 Select "Metric units" for European measurements (in temperature degree C, centimeters for rainfall and kilometers / hour for wind speed) or "Imperial Units" for American measurements (in temperature degree F, inches for rainfall and mile/hour for wind speed. Click "Next"
- Step 4 Click "Install", the program will be installed.
- Step 5 Click a Country and a City
- Step 6 A 6-day full weather window pops out on your computer's screen, click "Finish" to complete the installation



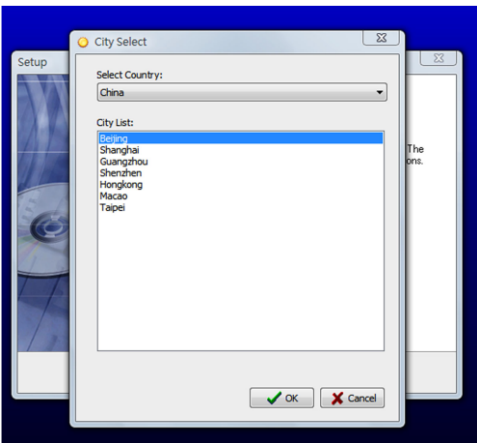
Step 2



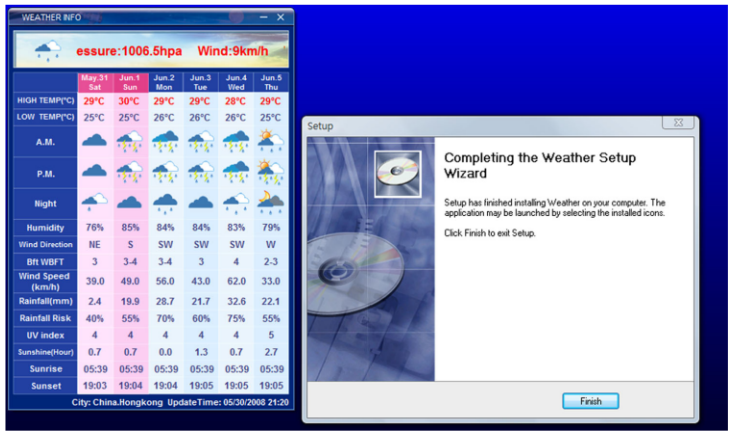
Step 3



Step 4



Step 5



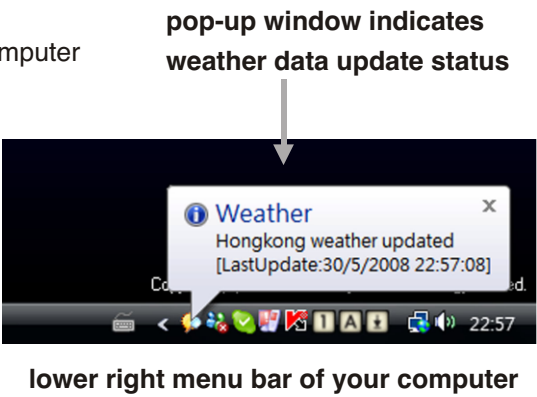
Step 6

How to change a city

You could change a city anytime when your computer is on-line :-

- Step 1 Locate the small weather icon on the lower right menu bar of your computer
- Step 2 Right click your mouse at the weather icon, a menu will be displayed
- Step 3 Click and select a country and city
- Step 4 A pop-up window will appear next to the weather icon to indicate weather data of the newly selected city is up-dated

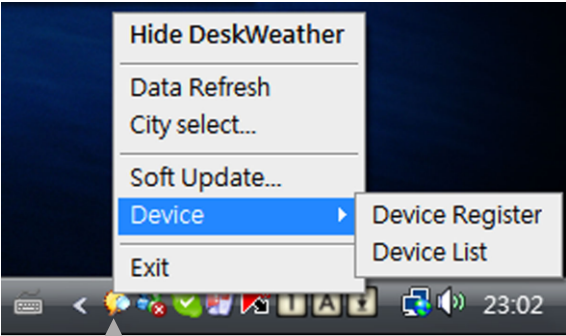
Be patient : New weather data of newly selected city will be displayed on your internet weather station in around 1 minute.




How to register the Internet weather station again with the USB in case of loss of connection

- Step 1 If connection is lost or does not work, click "Device", then click "Device Register" on your computer
- Step 2 Press RESET on your internet weather station or power it up again, fresh weather data will be received and displayed again in a short moments.

By doing so, you could register more than one main unit internet weather station with one computer / USB.



- Click “Device”
- Click “Device Register”

When your internet weather station receives data from the wireless USB, the  icon next to the time digits will flash and the LED on the wireless USB will flash. The LCD display will flash slightly during first time data transmission, this is normal.

To Up-date Latest Installation Program through the internet : click “Soft Update”

To minimize the Desktop Weather window : click the minimize icon “-” at the top of the Weather window, To hide the Desktop Weather Window, click “Hide DeskWeather”


TO SET YEAR, CALENDAR, DAY OF WEEK, 12/24 HOUR AND TIME

- 1. Press and hold the SET button for 3 seconds, the time digits change to Year digits "2008" and start to flash. Use + or - button to set the correct year.
- 2. Press SET again, the Month digits start to flash. Now use + or - button to set the correct month.
- 3. Press SET again, the Date digits start to flash. Now use + or - button to set the correct date
- 4. Press SET again, the language selection for the Weekday starts to flash. Now use + or - button to select a language. There are 7 languages of Weekday: English, German, French, Danish, Italian and Spanish.

- 5. Press `SET` again, the time digits change to "24 Hr" and start to flash. Now use `+` or `-` to select 12 Hr format or 24 Hr format. When "24 Hr" format is selected, calendar format is Date-Month, when "12 Hr" format is selected, calendar is Month-Date.
- 6. Press `SET` again, the Hour displays start to flash. Now use `+` or ` ` button to set the correct hour.
- 7. Press `SET` again, the Minute digits start to flash. Press "+" or "-" button to set the correct minute.
- 8. Press "SET" to return to normal mode.

During the setting process, your weather station will return to normal mode in 20 seconds automatically if there is no further press of any button.

DAYLIGHT-SAVING TIME (DST)

your internet weather station will adjust to daylight saving time automatically from the internet. When daylight saving time is active,  icon will appear next to the time digits.

TO SET THE ALARMS

To view the set alarm times, press "SET" once. Alarm 1 set time is displayed. Press "SET" again to view alarm 2 set time.


When Alarm 1 set time is displayed :-


Press and hold "SET" for 2 seconds, hour digits of Alarm 1 flash. Press "+" or "-" to set your desired hour of Alarm 1. Press "SET" again, minute digits of Alarm 1 flash. Press "+" or "-" to set your desired minute of Alarm 1.

When Alarm 2 set time is displayed :-

Press and hold "SET" for 2 seconds, hour digits of Alarm 2 flash. Press "+" or "-" to set your desired hour of Alarm 2. Press "SET" again, minute digits of Alarm 2 flash. Press "+" or "-" to set your desired minute of Alarm 2.

TO TURN ON / OFF ALARM 1 AND/OR ALARM 2

When Alarm 1 set time is displayed, press "+" or "-" to turn on Alarm 1 and Alarm 1  icon appears. Press "+" or "-" to turn off Alarm 1, Alarm 1 icon disappears.

When Alarm 2 set time is displayed, press "+" or "-" to turn on Alarm 2 and Alarm 2  icon appears. Press "+" or "-" to turn off Alarm 2, Alarm 2 icon disappears.

TO USE THE SNOOZE ALARM

When time reaches Alarm 1 set time, a beep alarm will sound. Press SNOOZE button once, the beep sound will stop temporarily and the AL1 or AL 2 flashes. Alarm will sound again in 5 minutes.

TO STOP THE DAILY ALARM


When alarm is beeping, press any other key (not the SNOOZe button) to stop the alarm. Alarm will sound again same time in the next day.
Alarm Duration : 2 minutes
Snooze duration : 5 minutes

TO VIEW THE HI-LO TEMPERATURES AND RAIN PRECIP OF NEXT 4 DAYS

Toggle the FORECAST button to see the HI, Lo and Rain Precip forecast of next 4 days.

TO VIEW THE OUTDOOR TEMPERATURES IN DIFFERENT WAYS

Your internet weather station can display outdoor temperatures in different ways by toggling the OUT TEMP button:-

- 1. **Outdoor Temperature and Relative Humidity from the Outdoor Transmitter** (the  icon will be displayed next to the OUT house icon)
- 2. **FEELS LIKE Outdoor Temperature** : this is the outdoor temperature will feel like for the current day. It is a factored mixture of Wind Speed, Outdoor Temperature and Relative humidity and Hi-Lo temperatures of the day.
- 3. **DEW POINT Outdoor Temperature** : this is the temperature to which the air would have to cool in order to reach saturation. Weather conditions at locations with high dew point temperatures (65F / 18.8C or greater) are likely to be uncomfortably humidity.
- 4. **Outdoor Temperature and Relative Humidity of the city your selected from the Internet**

IN

26.0 °C

COM

46 %

OUT

28 °C

38 %

OUTDOOR TEMPERATURE AND RH% FROM OUTDOOR TRANSMITTER

IN

26.0 °C

COM

46 %

OUT

28 °C

-- %

FEELS LIKE OUTDOOR TEMPERATURE

IN

26.0 °C

COM

46 %

OUT

28 °C

-- %

DEW POINT OUTDOOR TEMPERATURE

IN

26.0 °C

COM

46 %

OUT



28 °C

38 %

OUTDOOR TEMPERATURE AND RH% FROM THE INTERNET

Will flash when receiving outdoor temperature and RH% data

IF YOU LOSE YOUR OUTDOOR TEMPERATURE AND RELATIVE HUMIDITY

When the outdoor temperature digits show '---', the wireless transmission is either interrupted or lost. Press and hold the  button until it flashes, you should receive the outdoor temperature and humidity in a few minutes. If the outdoor temperature does not appear on the display after 5 minutes, bring the remote temperature transmitter inside placing it close to the thermometer unit. Press and hold the  button again, then press the **RESET** button on the outdoor transmitter. When the outdoor temperature and humidity appears on the display again, place the outdoor transmitter back outside in the proper location. If you continue to lose the outdoor temperature and humidity display, try placing the transmitter in a different location until you have smooth transmission of temperature data.

TO READ MAXIMUM-MINIMUM TEMPERATURE RECORDS

Press + / MEMORY to view the MAX-MIN indoor-outdoor temperatures and relative humidity.

IN

26.0 °C

COM

46 %

OUT

28 °C

38 %

MAXIMUM TEMPERATURES OF IN-OUT TEMPERATURES AND RH%

IN

26.0 °C

COM

46 %

OUT

28 °C

38 %

MINIMUM TEMPERATURES OF IN-OUT TEMPERATURES AND RH%

TO SELECT DEGREE C / F TEMPERATURE READOUT

Simply press - / C/ F button, when degree F readout is selected, wind speed will show in mph (miles / hour), when degree C readout is selected, wind speed will show in kmh (kilometers / hour).

COMFORT LEVEL

The Comfort Zone icon indicates how comfortable the climate is based on current indoor temperature and humidity measurements:

IN

26.0 °C

WET

46 %

OUT

28 °C

38 %

Wet

IN

26.0 °C

COM

46 %

OUT

28 °C

38 %

Comfortable

IN

26.0 °C

DRY

46 %

OUT

28 °C

38 %

Dry

UV INDEX

The UV index indicates how strong the ultraviolet (UV) radiation from the sun is. It helps people to effectively protect ourselves from UV light.

UV Index	Description
0-2	No danger to average person
3-5	Little risk of harm from unprotected sun exposure
6-7	High risk of harm from unprotected sun exposure
8-10	Very high risk of harm from unprotected sun exposure
11-12	Extreme risk of harm from unprotected sun exposure

WIND SPEED AND DIRECTION

There are 8 directions indicated by your internet weather station : North, North East, East, South East, South, South West, West, North West. Wind speed is displayed in mile per hour (mph) or kilometers per hour (kmph).

MOON PHASES

There are 8 icons of moon phase can be displayed on your internet weather station :

Waxing Moon Phases

New Moon

Crescent Moon

First quarter Moon

Gibbous

Waning moon

Full Moon

Gibbous

Last Quarter Moon









































Crescent Moon

BATTERY BACK-UP

- 1. Open the battery cover at the back case, insert 3 x AA batteries with correct + and - polarity inside the battery compartment. Replace the battery cover.
- 2. When the AC power is off, the batteries will power the internet weather station.
- 3. When only the back-up battery is used, the blue LCD backlite does not work.

WEATHER ICONS OF YOUR INTERNET WEATHER STATION

Your internet weather station can display 20 different weather conditions :-

DESCRIPTIONS	TODAY'S WEATHER ICON	4-DAY WEATHER ICON
CLEAR		
MOSTLY CLOUDY		
CLOUDY		
DRIZZLE		
RAIN		
SHOWERS		
FOG		
HAZE		
DRIZZLE & SNOW		
SHOWER & SNOW		
RAIN & SNOWY		
SNOW		
MED SNOW		
NORMAL SNOW		
THUNDERSTORM - SMALL		
THUNDERSTORM - MEDIUM		
THUNDERSTORM - LARGE		
THUNDERSTORM & SNOW		
ICY & RAIN		
ICY & DRIZZLE		


RESETTING YOUR INTERNET WEATHER STATION

Press RESET once to return to default settings. However, you need to click “Device” and then “Device Register” on your computer screen to re-synchronise your internet weather station to your USB and computer.

CARE OF YOUR WIRELESS INTERNET WEATHER STATION

- 1. Avoid exposing the thermometer unit to extreme temperatures, water or direct sunlight.
- 2. Avoid contact with any corrosive materials
- 3. Do not subject the thermometer to excessive force, dust or humidity.
- 4. Do not tamper with any of the components of this thermometer.

TROUBLE SHOOTING

PROBLEM	SYMPTOM	REMEDY
Your internet weather station is not working	LCD display is blank Backlite is off	Make sure the AC/DC adaptor is plugged into AC outlet and connected to your internet weather station
LCD Display	1) Only time and calendar and indoor temperature and RH% on the LCD, no weather icons 2) Losing weather forecast data	1) Make sure your computer is powered on and is connected on-line 2) Make sure the USB is inserted into your computer 3) Press and hold - / C/F for 2 seconds to start data reception / transmission again 4) Right click small weather icon at lower menu bar on your PC screen, click “Device”, then click “Device Register”, press RESET on your internet weather station
Weather forecast	Weather Forecast information is not relevant to your outdoor weather condition	Incorrect city is selected : right click small weather icon at lower menu bar on your PC screen, click “City Select”, then click country and then a city.
Outdoor Temperature and relative humidity	Outdoor temperature and relative humidity readout shows “--”	1) Outdoor transmitter is out of range: bring it closer to the weather station 2) Outdoor transmitter low battery : replace fresh batteries 3) Outdoor transmitter is not synchronized with the weather station : press and hold OUT TEMP until the  icon flashes, then press RESET on your outdoor transmitter to re-synchronise with the internet weather station
Calendar	Strange Day of the Week	Press and hold SET to enter set mode, adjust the language of the Day of Week
Time	Incorrect time on the LCD display	Incorrect time on your computer : adjust the time on your computer to correct time

PRODUCT SPECIFICATIONS

Indoor range: Temperature 0C to 50C / +32F to +122F, Relative Humidity 20%-95%
Outdoor range : Temperature -50C to +70C / -58F to +158F, Relative Humidity 20%-95%
Transmission distance : up to 100 meter with no obstructions
Transmission Frequency : 868mHz (for Europe) / 915mHz (for U.S.A)
Transmission interval : Outdoor Temperature and RH% : approx. every 1 minute
USB and main unit : approx. every 1 minute

OFFICIAL WEB SITE

All internet weather data of weather obtained from www.weatheronline.de

MINIMUM HARDWARE REQUIREMENTS OF YOUR COMPUTER

You need the below configuration of your computer to run with your internet weather station smoothly:-

CPU 1G kHz
RAM 512MB
Hard Disk 1GB free

Remark: Changes or modifications not expressly approved by the party responsible for compliance could void the user's authority to operate the equipment.

Nexus Industrial Design Ltd.

“Operation is subject to the following two conditions: (1) this device may not cause interference, and (2) this device must accept any interference, including interference that may cause undesired operation of the device”

Remark:

Changes or modifications not expressly approved by the party responsible for compliance could void the user's authority to operate the equipment

NOTE: This equipment has been tested and found to comply with the limits for a Class B digital device, pursuant to Part 15 of the FCC Rules. These limits are designed to provide reasonable protection against harmful interference in a residential installation. This equipment generates, uses and can radiate radio frequency energy and, if not installed and used in accordance with the instructions, may cause harmful interference to radio communications. However, there is no guarantee that interference will not occur in a particular installation.

If this equipment does cause harmful interference to radio or television reception, which can be determined by turning the equipment off and on, the user is encouraged to try to correct the interference by one or more of the following measures:

- Reorient or relocate the receiving antenna.
- Increase the separation between the equipment and receiver.
- Connect the equipment into an outlet on a circuit different from that to which the receiver is connected.
- Consult the dealer or an experienced radio/TV technician for help.