

YK REMOTE CONTROLLER DEVICE

USER'S MANUAL

ZHEJIANG XIANFENG MACHINERY CO., LTD.

*Thank you for purchasing the products of Zhejiang Xianfeng Machinery Co., Ltd..
Zhejinag Xianfeng Machinery Co., Ltd. has been qualified in authentication of
ISO9001 Quality System.*

Operation Instruction

YK REMOTE CONTROLLER DEVICE

1. General description

YK remote controller device is designed for all controller products of XIANFENG.
It consists of two parts. One is the transmitter. The other is the receiver.

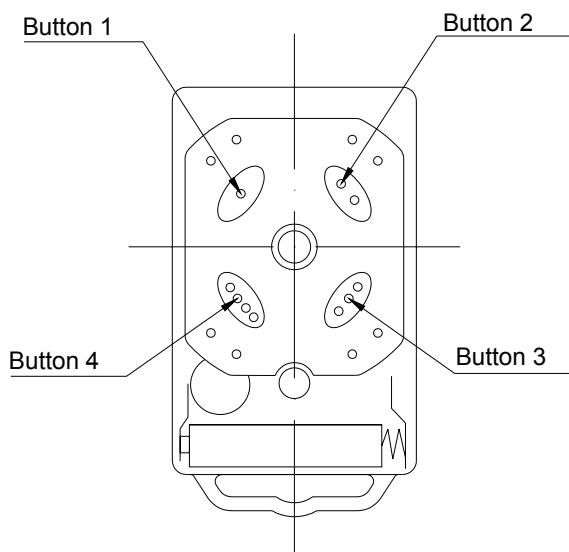
Main technical parameters:

- Coding type: hopping code
- Environment temperature : $-10^{\circ}\text{C} \sim +55^{\circ}\text{C}$
- Frequency: 433.92MHz
- Transmit power: 10mW
- Transmit channel: four channels
- Battery: 12V A27
- Distance: 30m

2. Transmitter

- The transmitter has four buttons. See figure 1

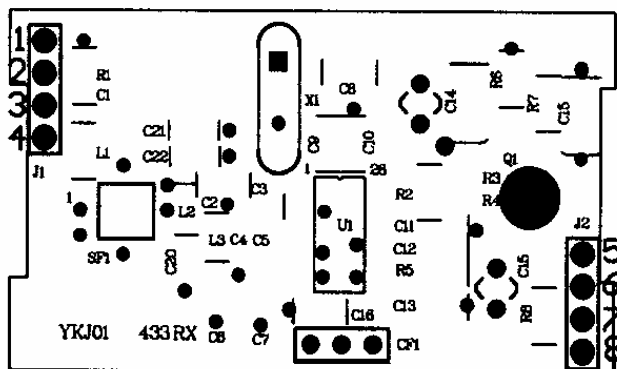
Fig.1 Remote control



- The sign will be sent when you press each of the four buttons. The LED will flash at the same time.
- The each button has different function in the different control board. Please see corresponding **the control box manual**.

2. Receiver

- The sign of the receiver interface is as follow:



1—NC 2—NC 3—ANT 4—GND
5—RF out 6—Vcc 7—NC 8—Vss

- The work voltage of receiver is 5V.
- The receiver can accept the signal of transmitter.

3. Troubles

Trouble	Solutions
The indicator light of remote control does not light.	Check the batteries on your remote control
Remote control is not suitable for receiver.	After making sure the codes are correct, erase remote controls and then re-program the codes in the device.
Broken receive board	Replace receive board.

NOTE:

THE MANUFACTURER IS NOT RESPONSIBLE FOR ANY RADIO OR TV INTERFERENCE CAUSED BY UNAUTHORIZED MODIFICATIONS TO THIS EQUIPMENT. SUCH MODIFICATIONS COULD VOID THE USER AUTHORITY TO OPERATE THE EQUIPMENT.