



Operational Description of the Gizmondo Device

The Gizmondo terminal is a high performance electronic gaming device that also features GPS and GSM to provide location based services. The design aim is for market leading games performance and multimedia functions combined with small size in order to make the Gizmondo attractive to children.

Key applications and services supported are:-

- 3D gaming including peer to peer gaming using Bluetooth and GPRS
- Remote tracking of the Gizmondo and Location Based Services using GSM and GPS
- Playback of Windows WMV video
- MP3 and Windows WMA playback
- Messaging; SMS and MMS messaging, Email
- Digital Camera
- IE Browser and content download
- Smart Add enabled

The chosen Operating System platform is Microsoft Windows CE.NET (version 4.2). This selection encompasses the operating kernel and some of the platform infrastructure. The user interface and applications are custom developed.

The Gizmondo device works in conjunction to the network and server infrastructure, where additional services are stored and supplied. The Gizmondo terminal exists within the context of a network infrastructure and certain features interact heavily with that infrastructure.

Operational Description

Bluetooth

Our product fully complies with the modulation system as described in BT specification v1.1.

GSM

Our product fully complies to PTCRB with the modulation system as defined in Annex G in TS 51.010

DC voltages and Currents into final radio amplifying device

Bluetooth

The supply voltage for the internal radio is 1.8V, as per data sheet for BC3-ROM. The total maximum current, including baseband, for the BC3-ROM is 33.82mA as per data sheet.

GSM

The supply voltage for the internal radio is VBAT, defined in Gizmondo PICS. The average current for the power amplifier in the PCS band is 162.5mA with one TX slot, if utilizing two TX slots this increases to 325mA.

Means for determining and stabilising frequency, suppression of spurious radiation, limiting modulation, and limiting power

Bluetooth

This is described in detail in BT specification v1.1, which our product fully complies with.

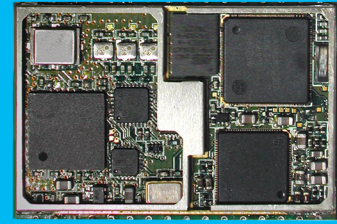
GSM

This is described in detail in PTCRB TS 51.010, which our product fully complies with.

Chi Mei Communication Systems

GSM/GPRS Module

- Tri-band EGSM900/DCS1800/PCS1900
- Always on line: GPRS Class B, multi-slot Class 10
- Small form factor design
- Low power consumption
- SIM application tool kit
- Easy to integrate with a wide range of applications, such as mobile computers, handheld devices, fleet tracking systems, POS terminals, vending machines, and security systems.



Dimensions : 43 x 29 x 3.3 mm
Actual size

Specifications

Triple band operation

- EGSM 900, DCS 1800 and PCS 1900
- Discontinuous receiving for power saving (DRX)
- Discontinuous transmission (DTX)

Voice

- Half rate/Full rate/Enhanced full rate
- Echo cancellation for hands-free operation

Short message service (SMS)

- Mobile terminated/originated, point to point
- Cell broadcasting (CB)
- Text and PDU mode

FAX

- Group 3
- Alternative speech & facsimile
- Transparent mode

Supplementary service (SS)

- Line identification (CLIP, CLIR, CoLP)
- Call forwarding (CFU, CFB, CFNRy, CFNRc)
- Call completion (CW, HOLD, MPTY, CUG, UUS)
- Advise of charge (AoCI, AoCC)
- Call barring (BAOC, BOIC, BOIC-exHC, BAIC, BAIC-exRoam)
- Explicit call transfer (ECT)

Alternate line service (ALS)

Emergency call

SIM application tool kit up to class 3

Unstructured supplementary data (USSD)

Circuit switched data

- Upload/download
- Asynchronous
- Transparent/non-transparent mode
- Up to 9.6/14.4Kbps

GPRS Class B, Multi-slot Class 10

- 4 receiving slots, 2 transmitting slots, 5 maximum active, simultaneous network registration of GSM & GPRS
- CS1~CS4 coding scheme supported
- SMS over GPRS

Interface

- 16c750 compatible UART
- Supply voltage: 3.2V ~ 4.2V
- 3/5V SIM supported
- 50Ω antenna pad
- Analog audio input/output
- AT command set according to GSM 07.05, 07.07 including GPRS-specific or extension commands
- PPP stack

General information

- Dimensions: 43 x 29 x 3.3 mm
- Weight: 7g
- Operating temperature: from -10°C ~ +55°C

Approval

- R&TTE based on the reference configuration



Chi Mei Communication Systems, Inc.

11F, No. 39, Chung Hua Road Sec. 1
Taipei 100, Taiwan, R.O.C.
Tel : + 886-2-2370-8699
Fax : + 886-2-2370-7399

Specifications are subject to change without prior notice.
Copyright © 2002 Chi Mei Communication Systems, Inc. All rights reserved.
All trademarks are the properties of their respective owners.