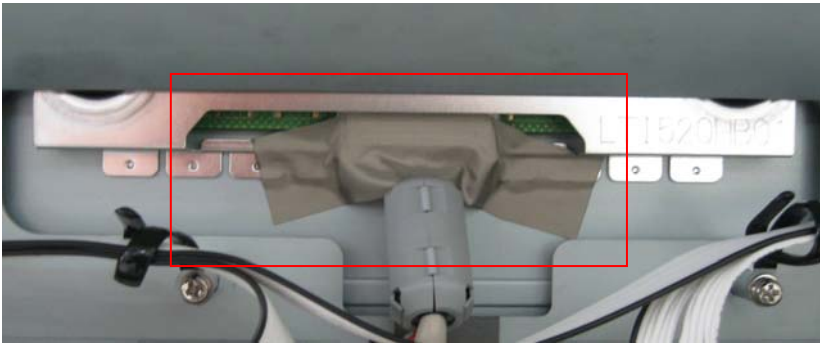
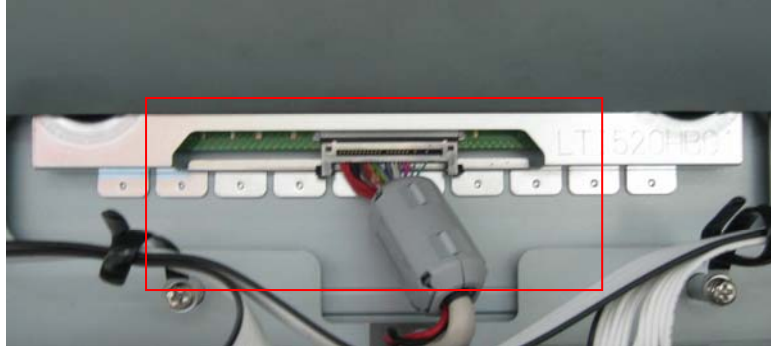
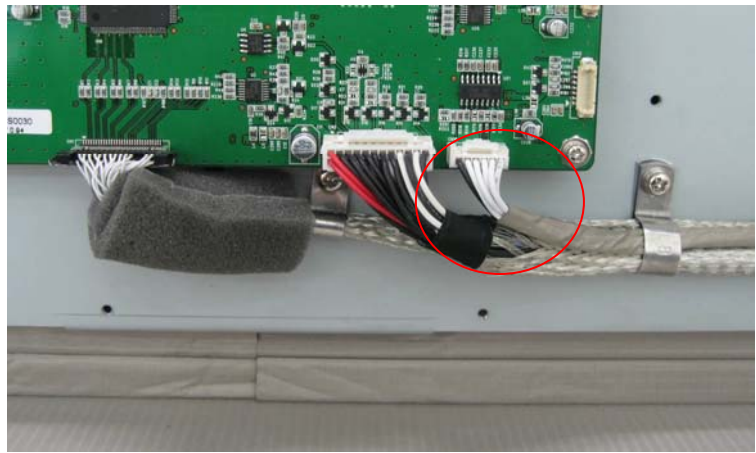
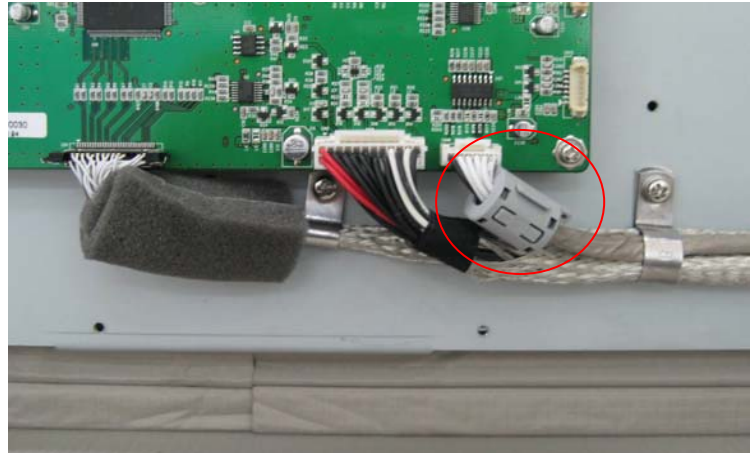




FS-S5201C EMC Modification list for FCC Permissive change

1. On the LVDS cable

Before	After
 A close-up photograph of an LVDS cable connector. A piece of tan-colored EMI tape is wrapped around the green pin headers of the connector. A red rectangular box highlights the area where the tape is applied. The connector is labeled "LT1520HBC".	 A close-up photograph of the same LVDS cable connector after the EMI tape has been removed. The green pin headers are now visible. A red rectangular box highlights the area where the tape was previously located. The connector is labeled "LT1520HBC".
1) EMI tape removed on the LVDS Cable	

2. On the RS232C cable

Before	After
	
	
1) Two ferrite core(ZCAT1518-0730A, TDK) installed on the RS232C cable.	

3. In the IO box

Before



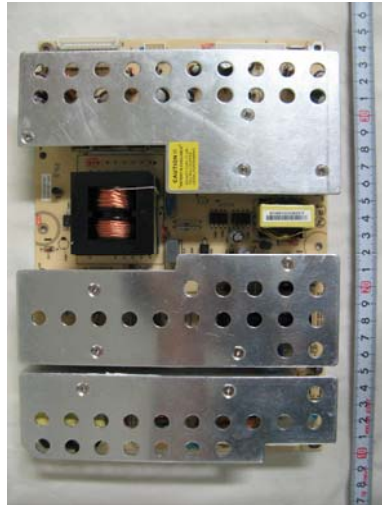
After



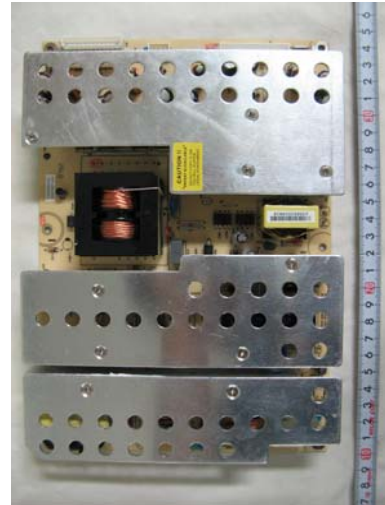
1) Fence installed between AC switch and IO board to prevent interference of high frequency.

4. Add the SMPS Boards

Before

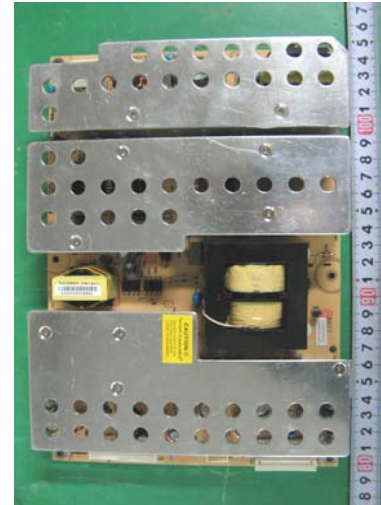


(Left)

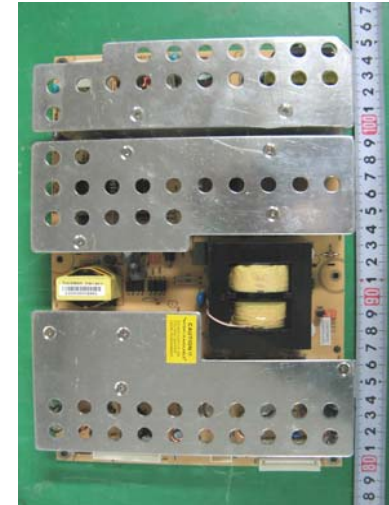


(Right)

After



(Left)



(Right)