

● Inside View of EUT



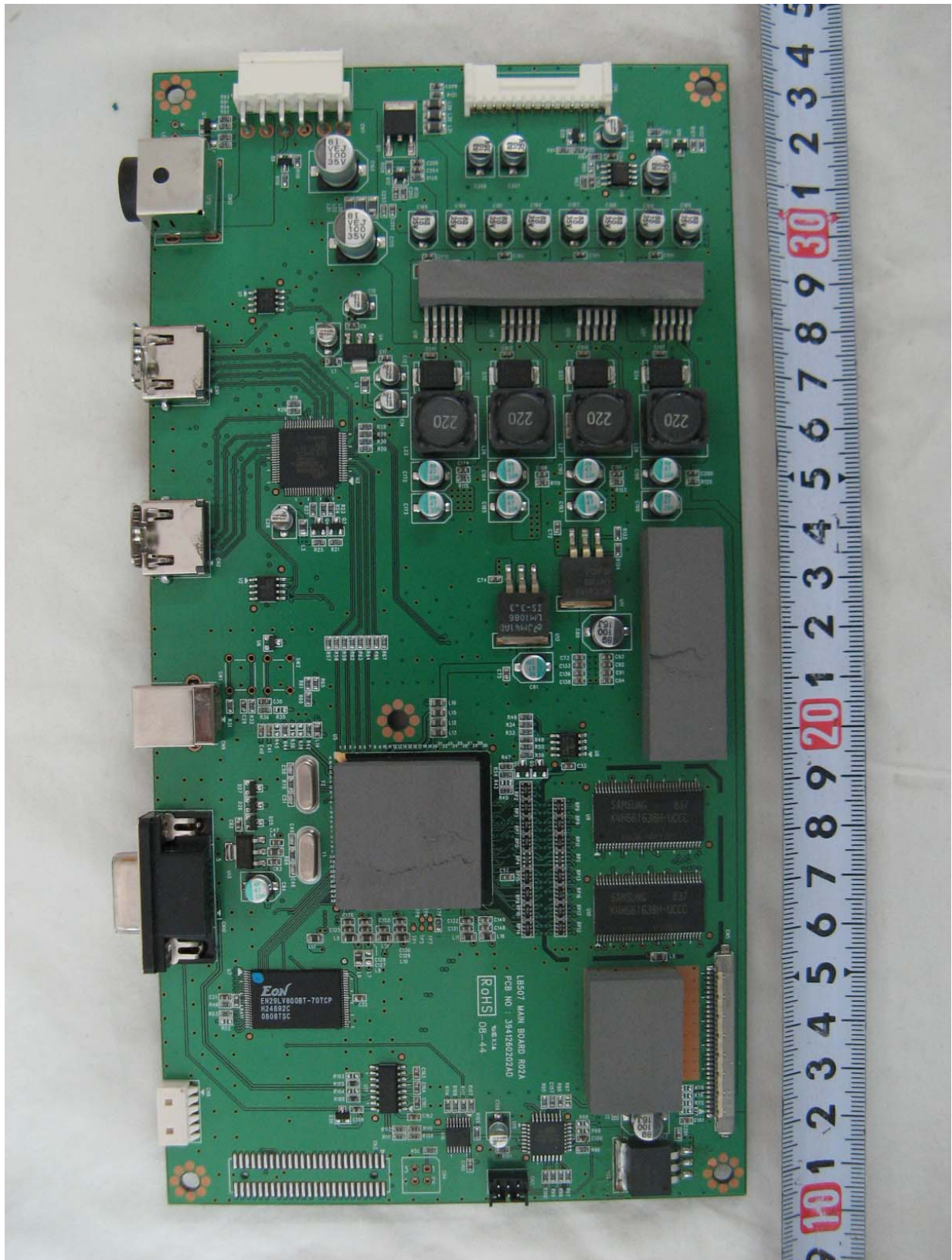
● Front View of LCD Panel



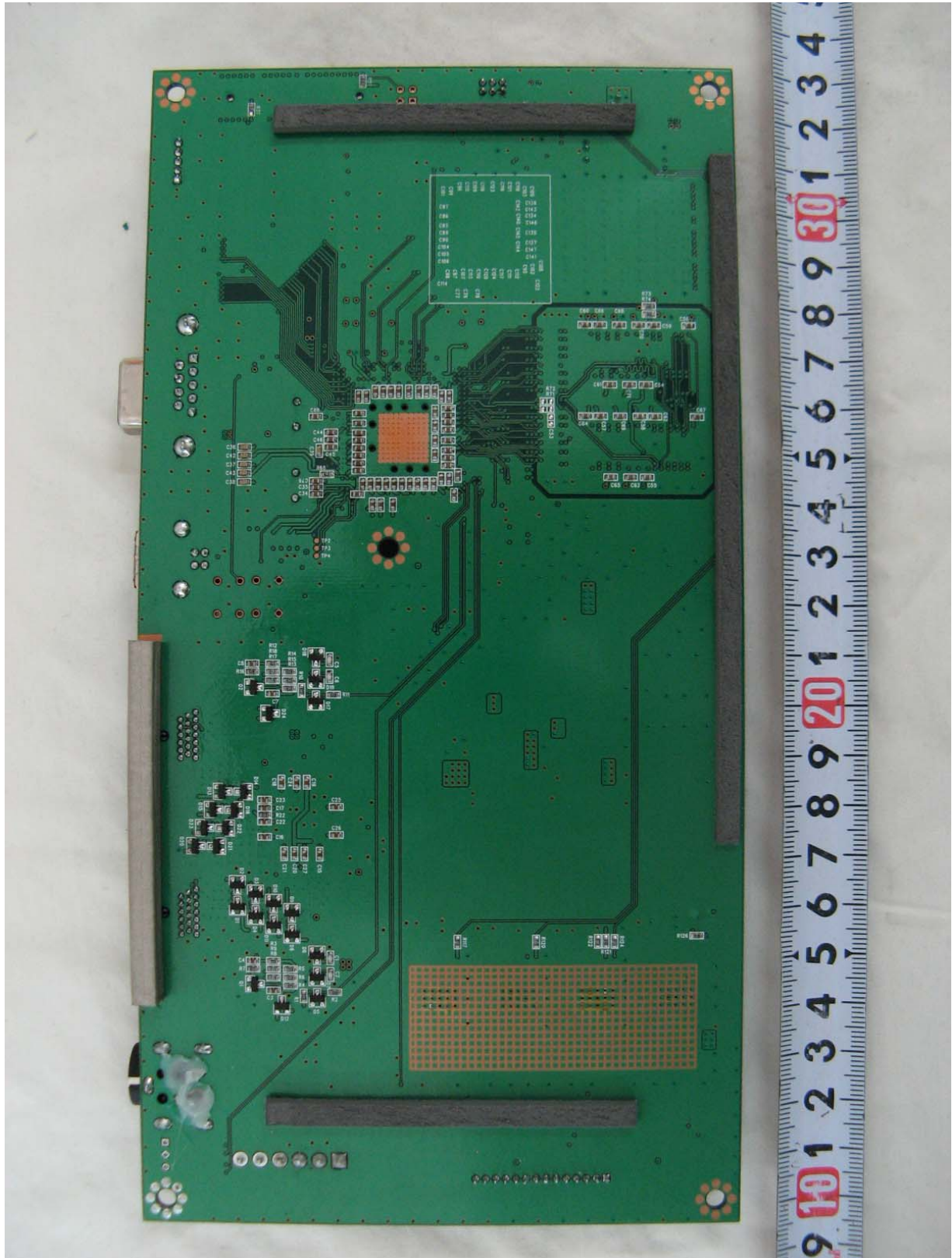
● Rear View of LCD Panel



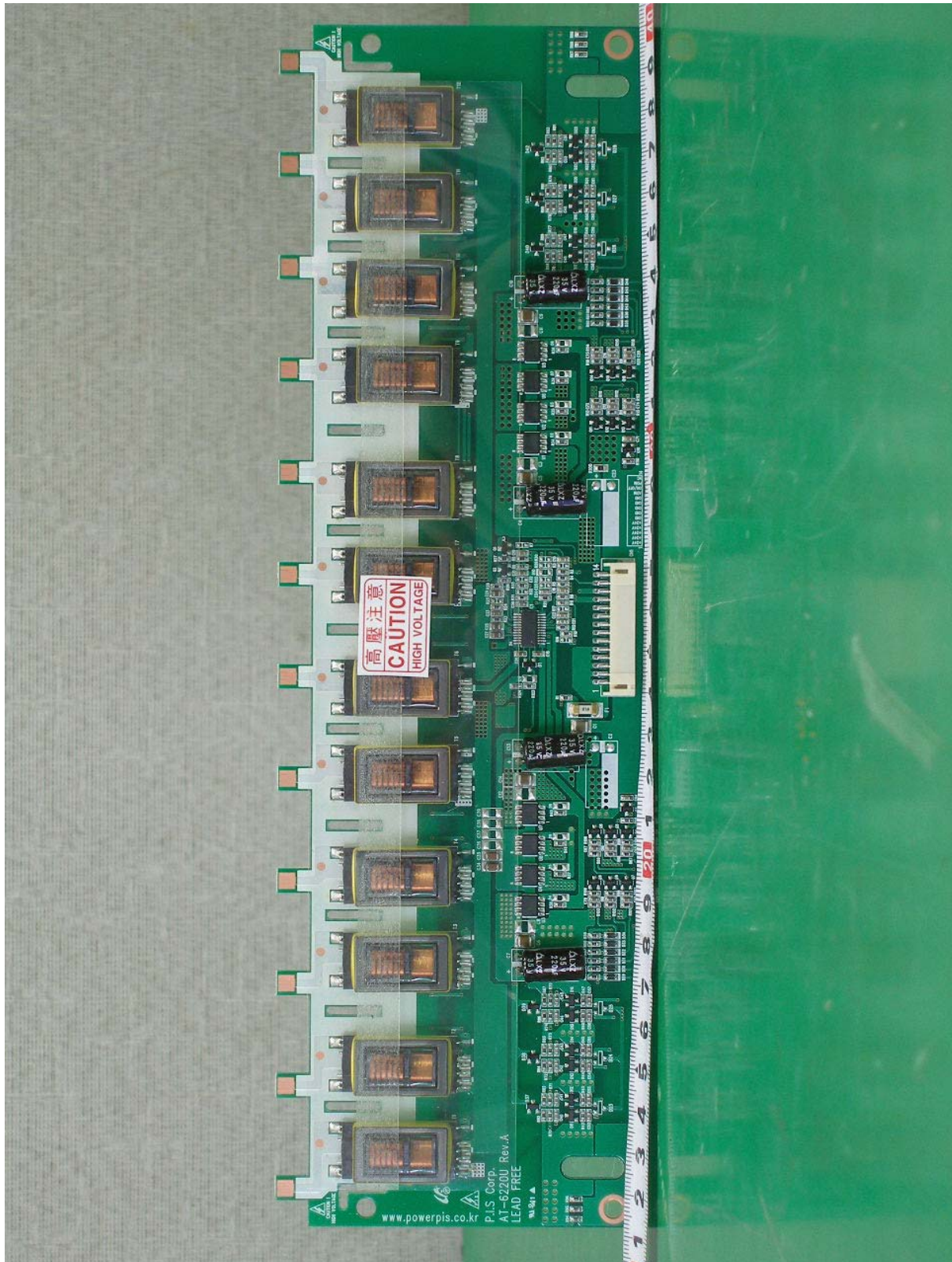
● Front View of Main Board



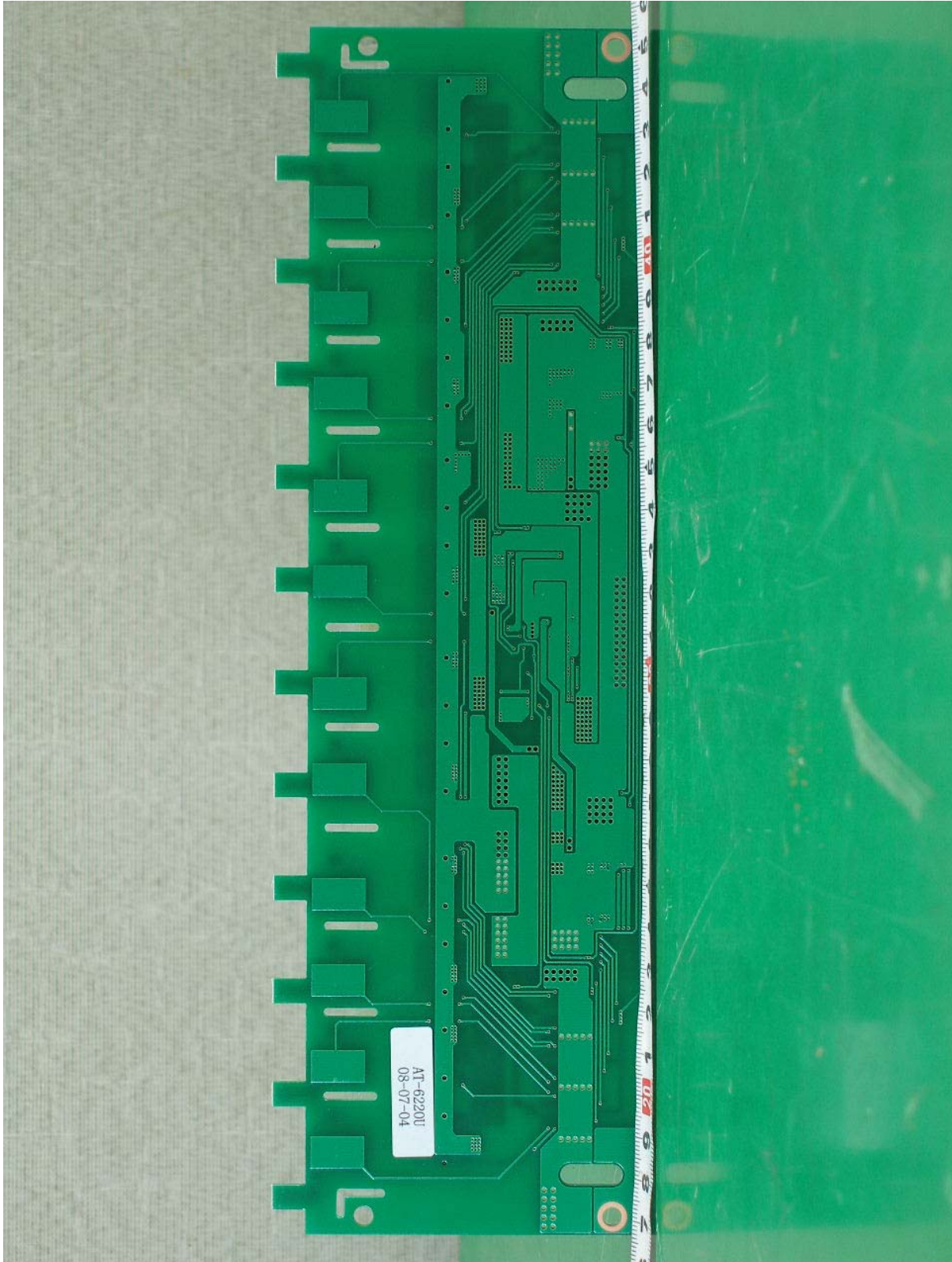
● Rear View of Main Board



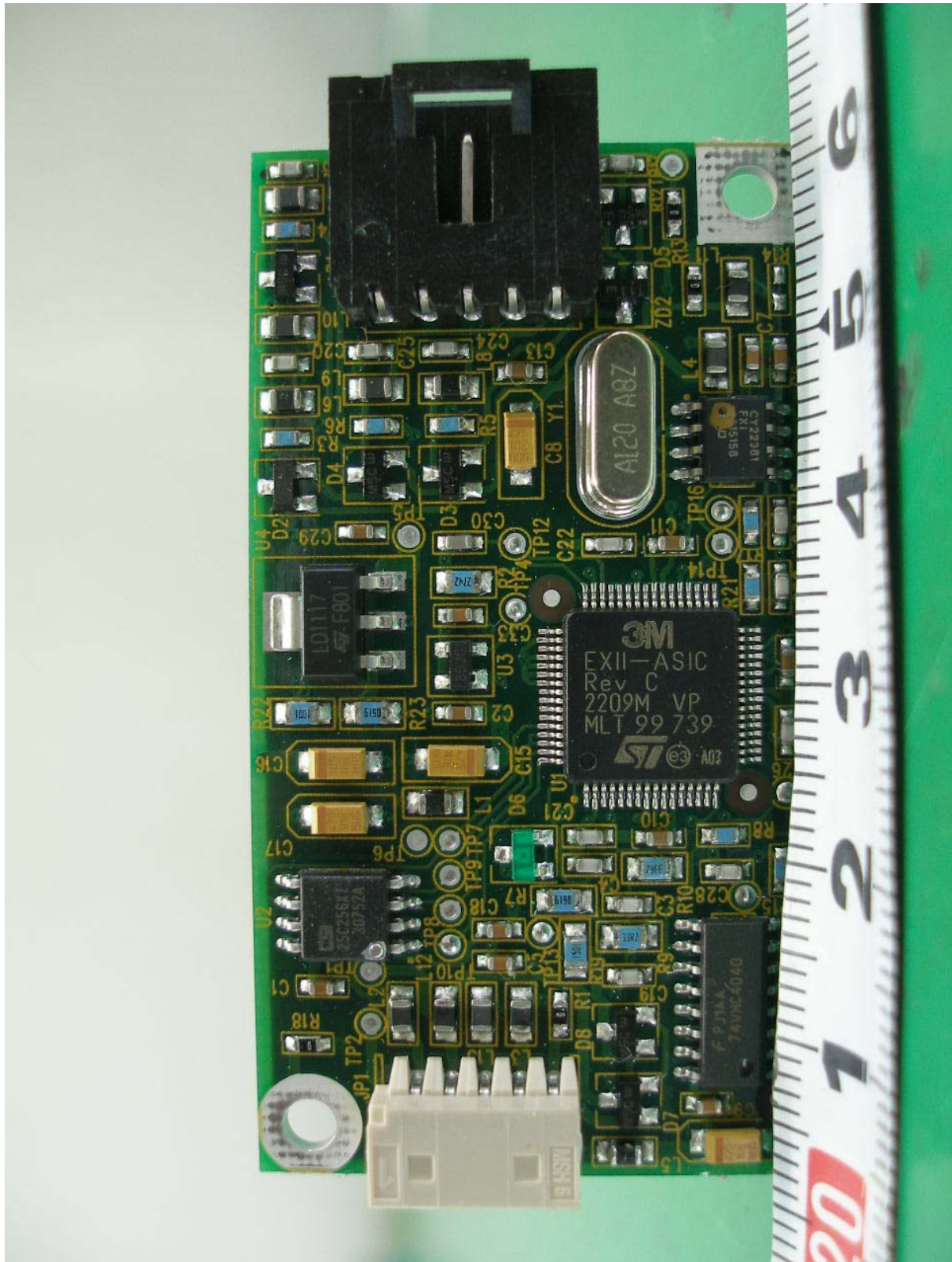
● Front View of Inverter Board



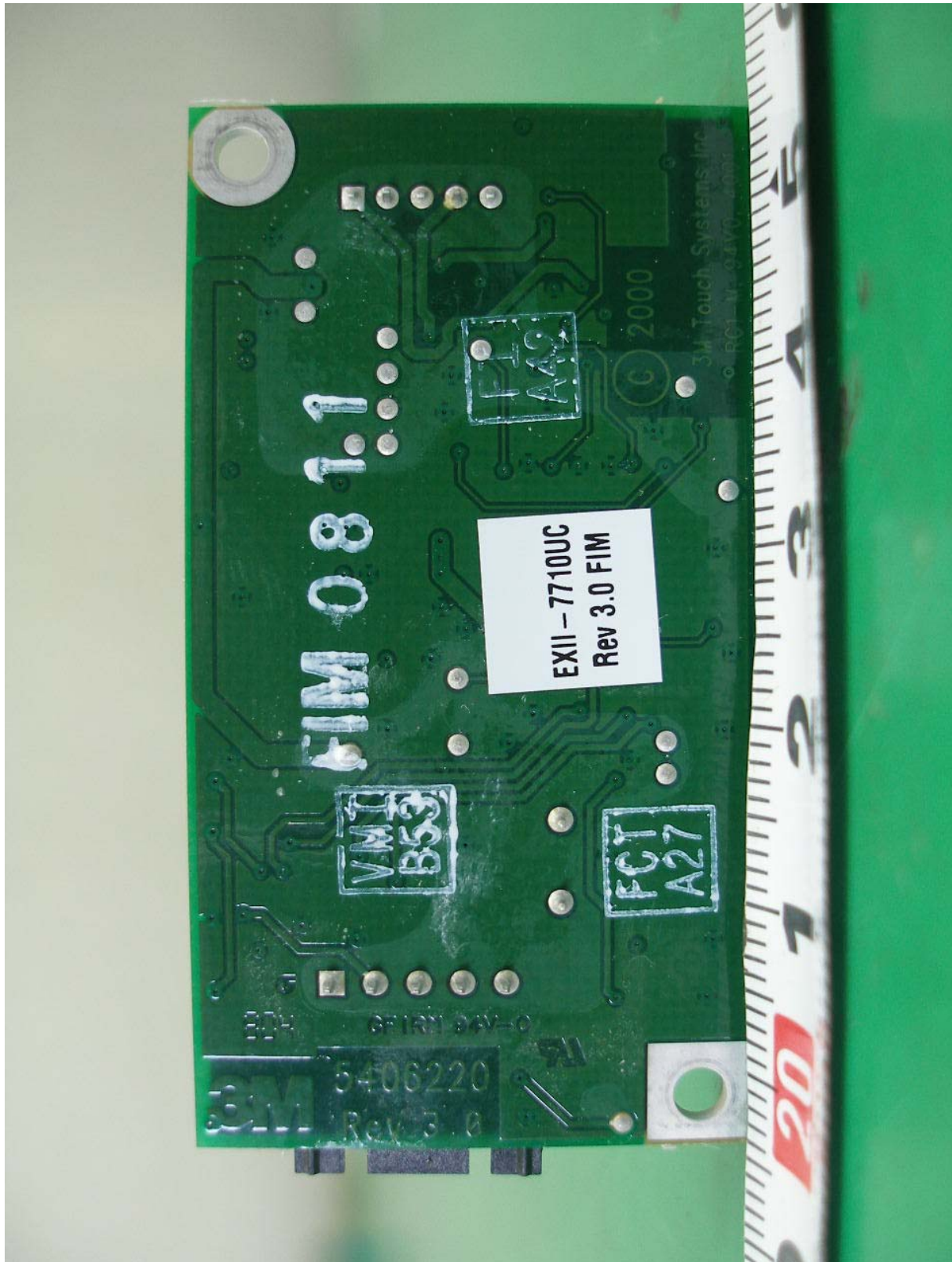
● Rear View of Inverter Board



● Front View of USB Controller Board



● Rear View of USB Controller Board



● Front View of Adaptor



● Rear View of Adaptor

