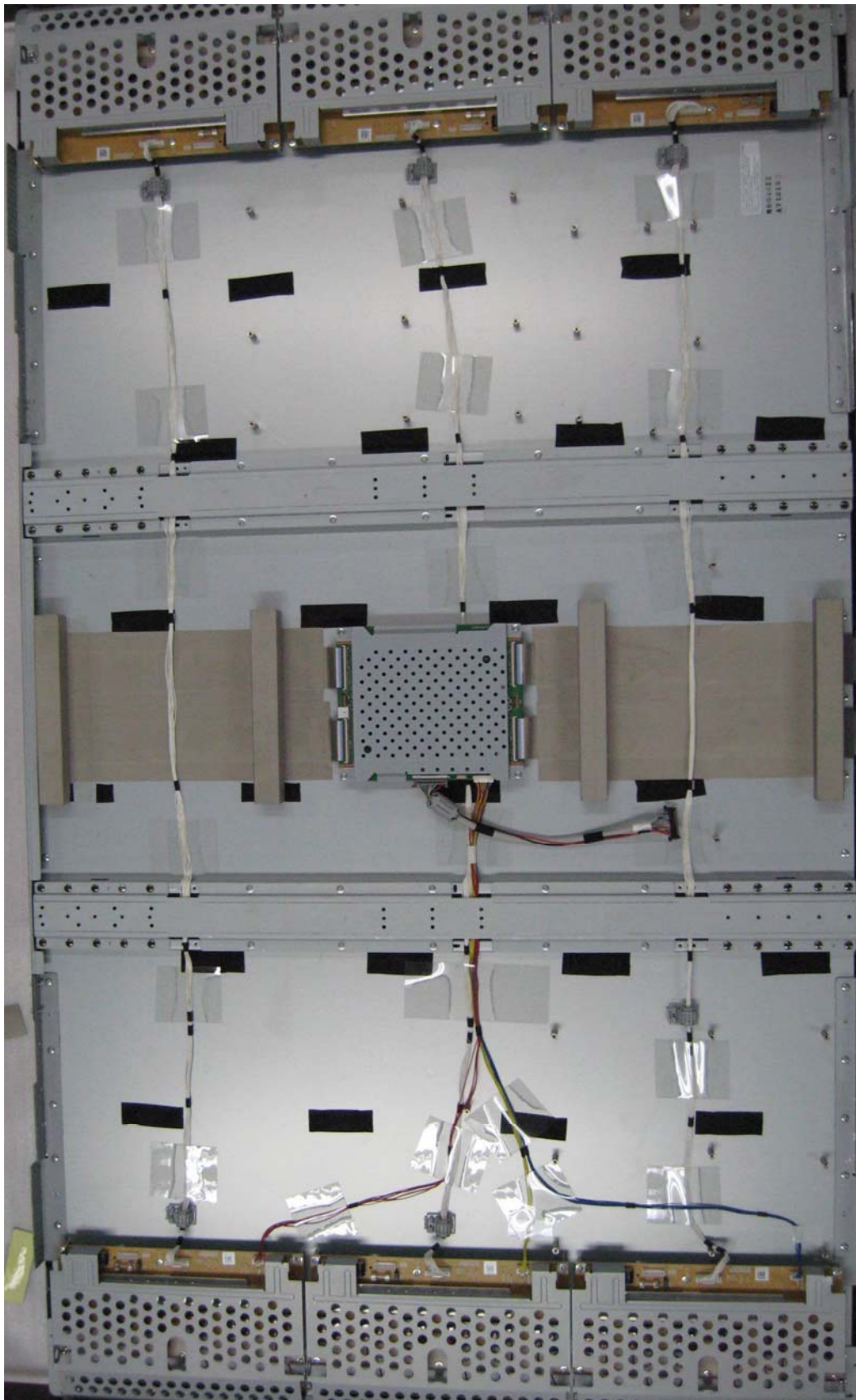


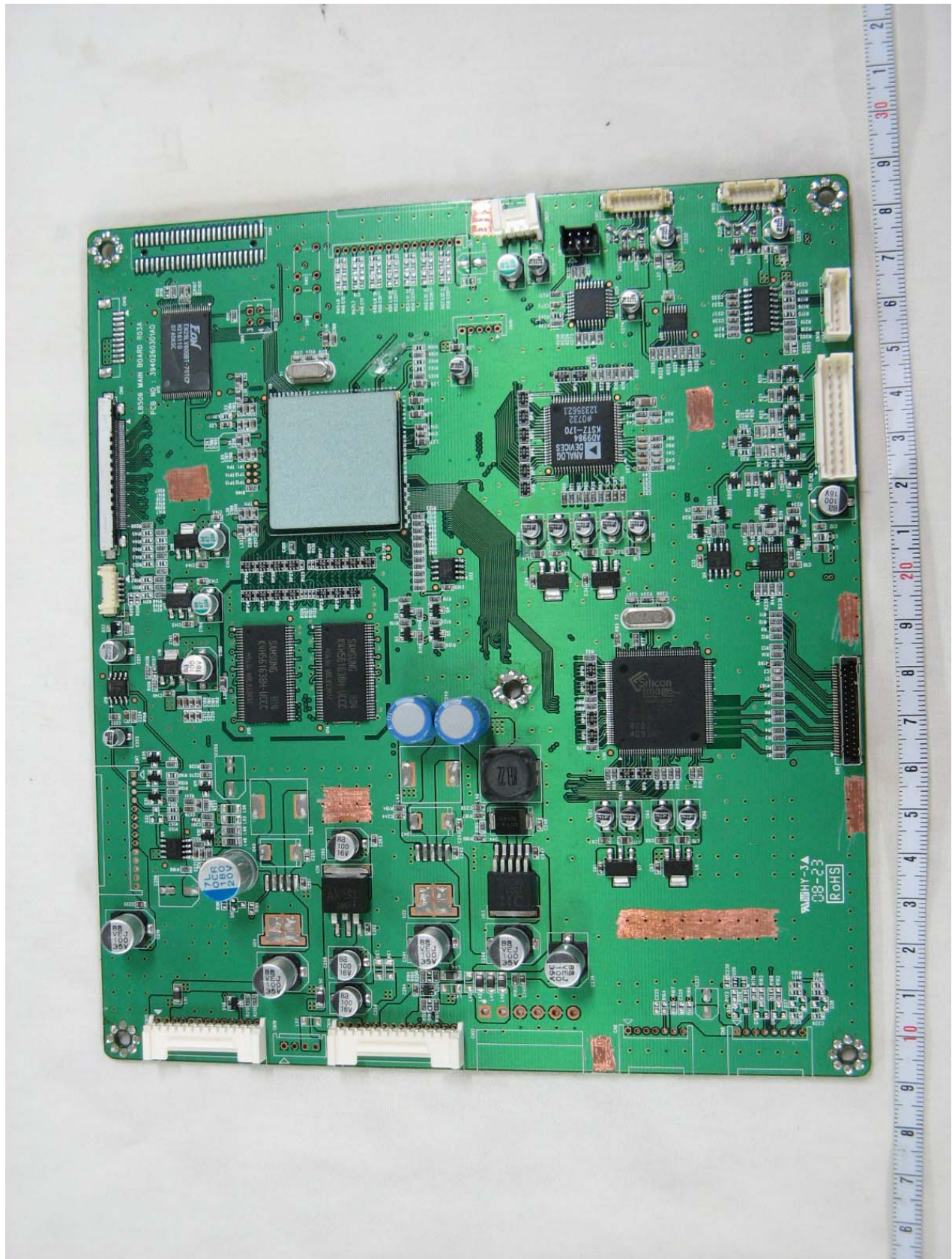
● Front View of LCD Panel



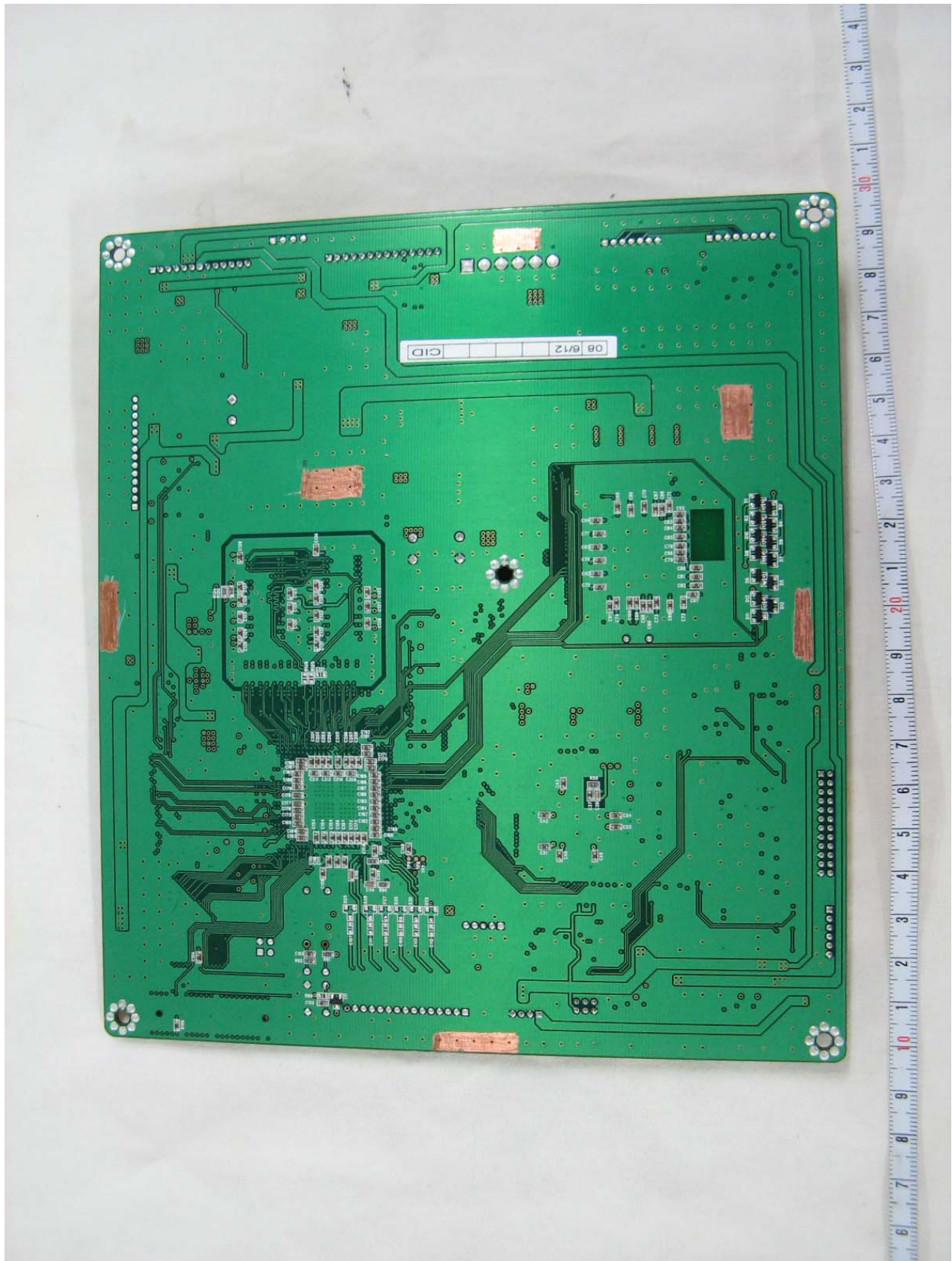
● Rear View of LCD Panel



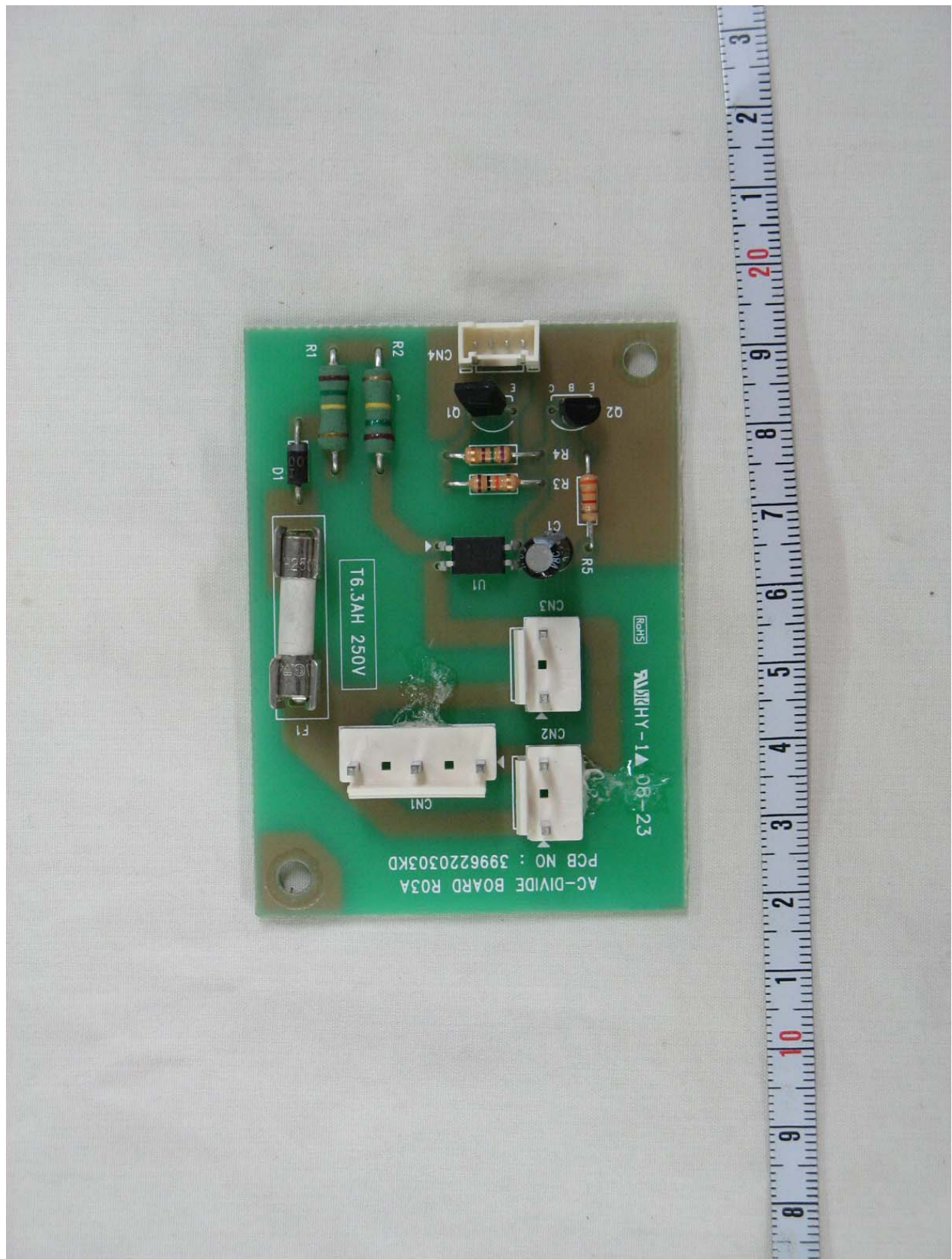
● Front View of LB506 Main Board



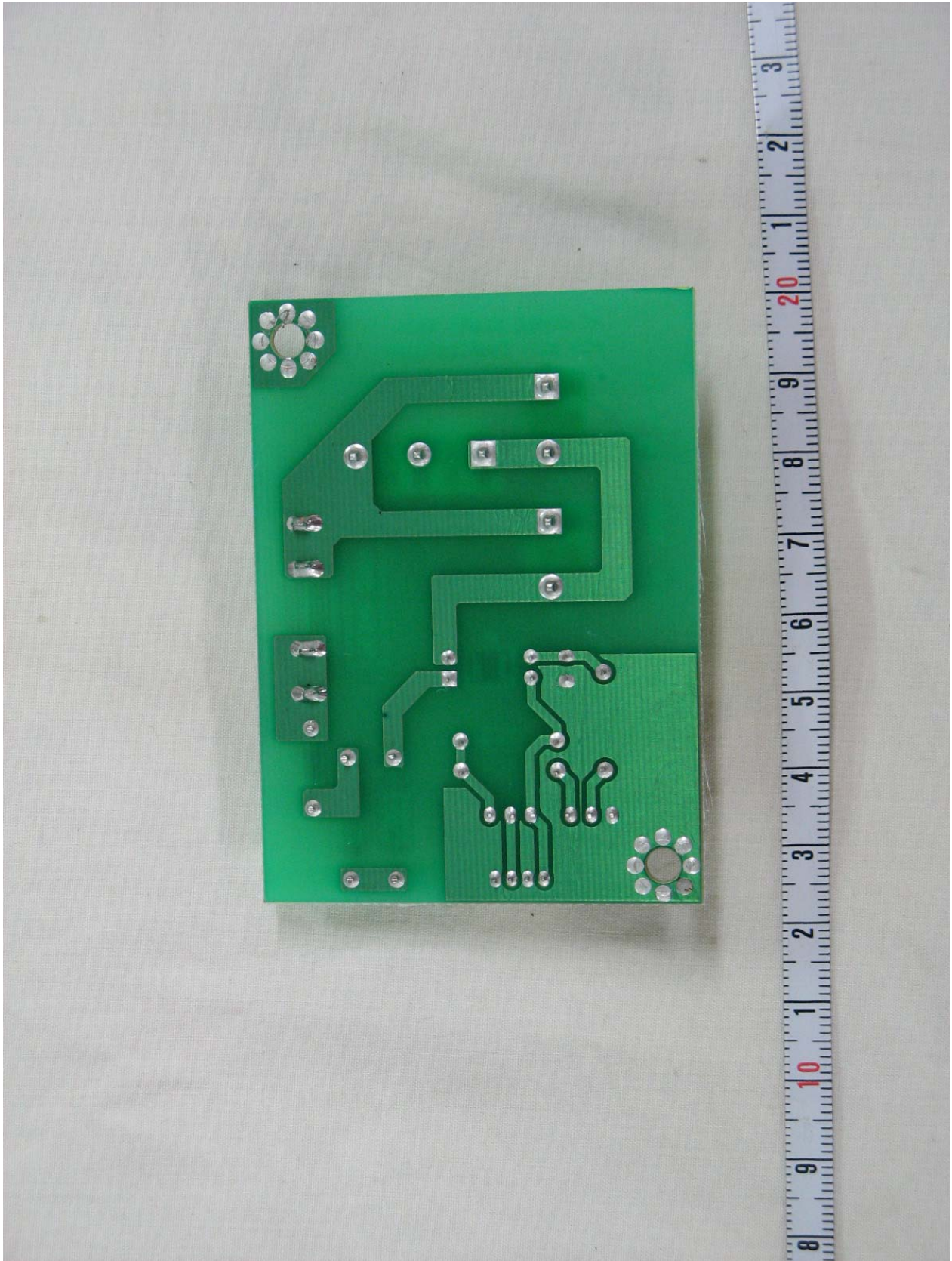
● Rear View of LB506 Main Board



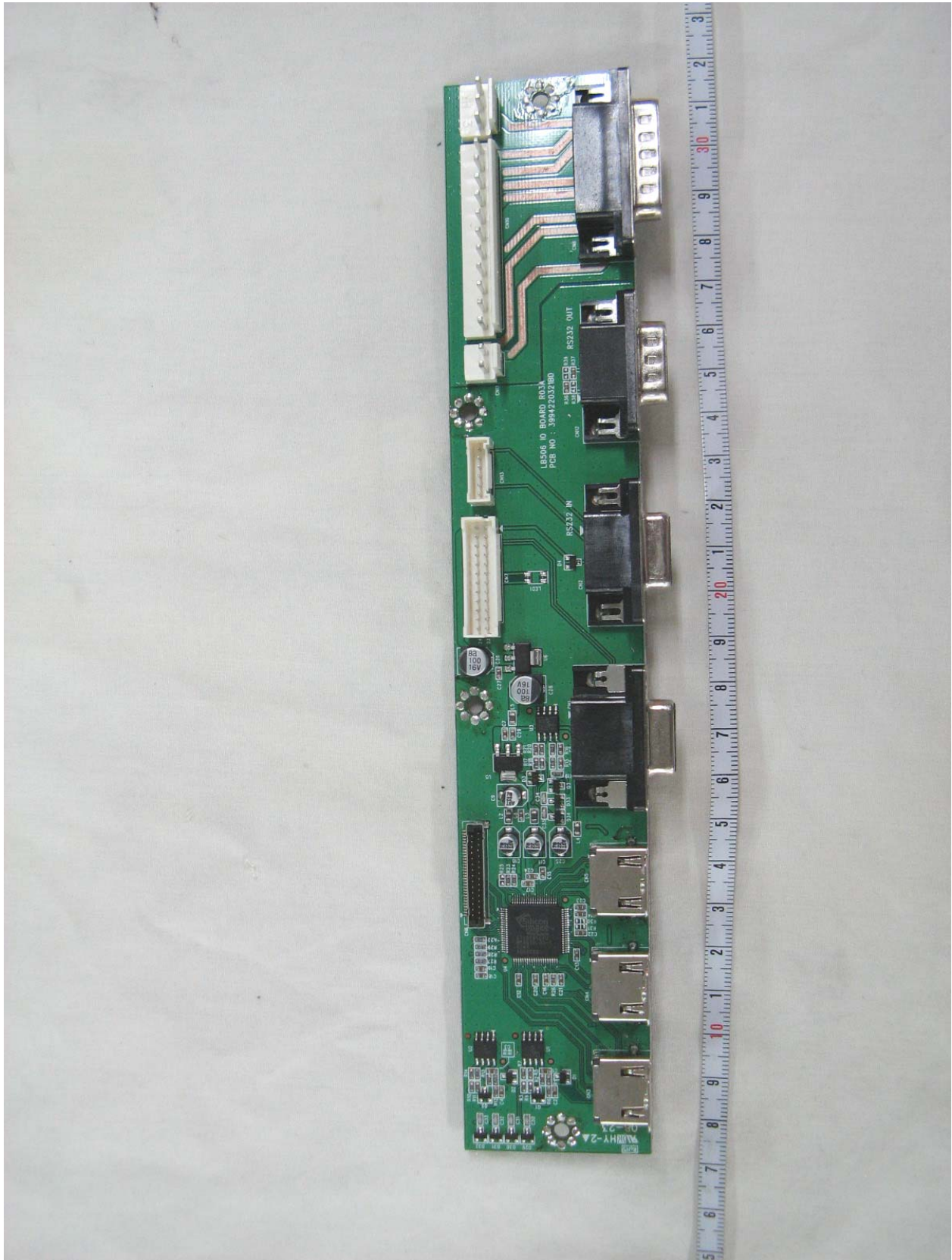
● Front View of AC Divide Board



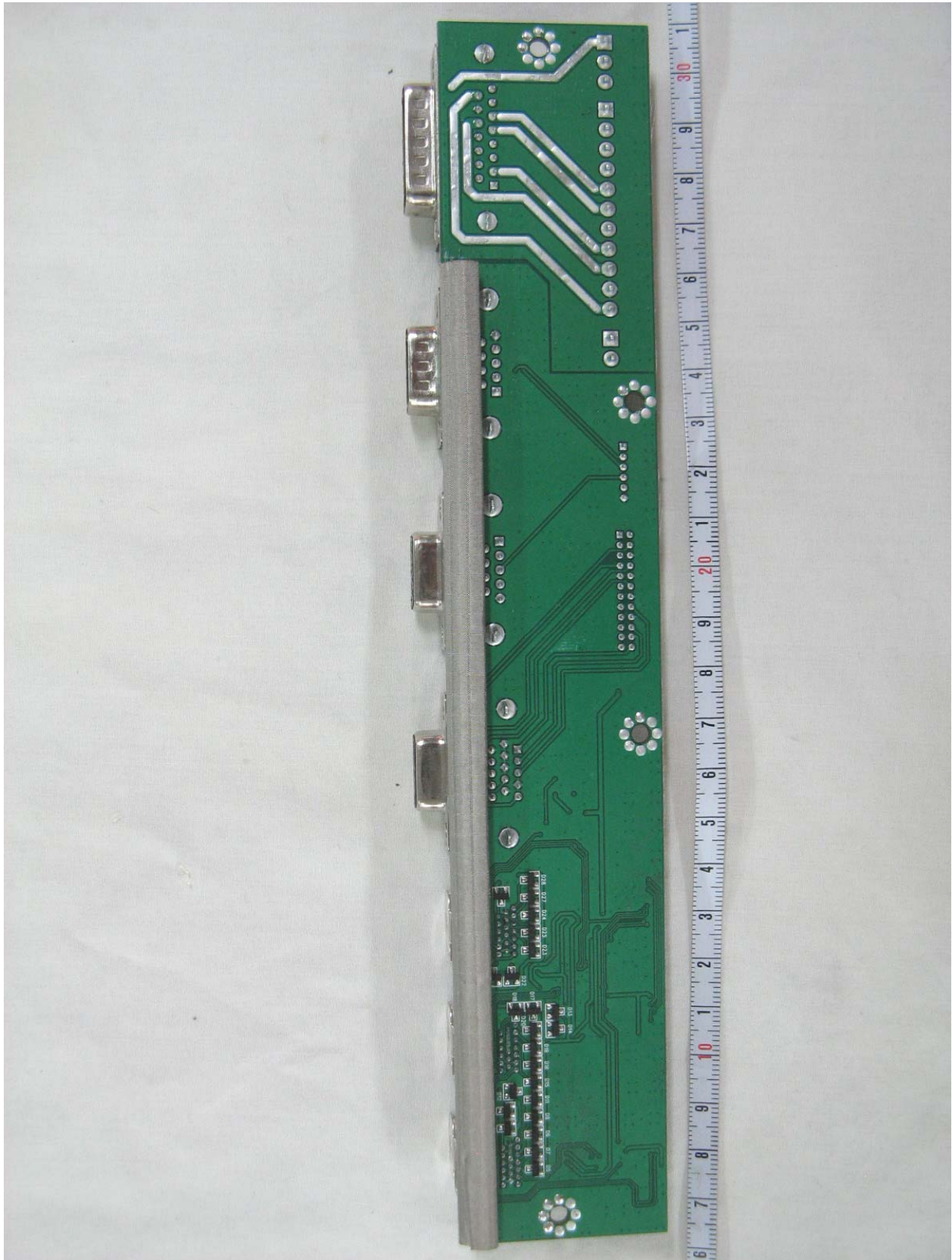
● Rear View of AC Divide Board



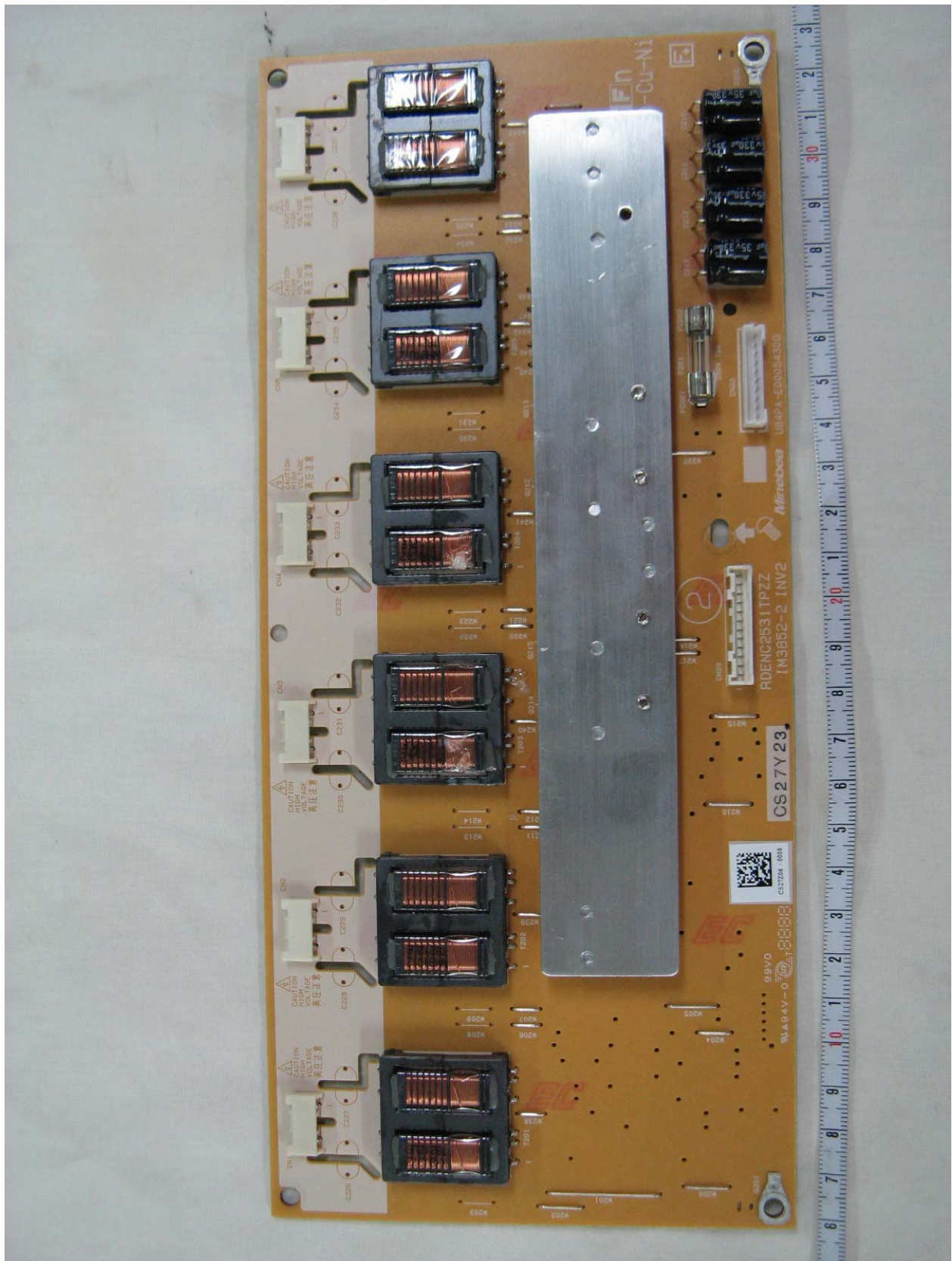
● Front View of LB506 I/O Board



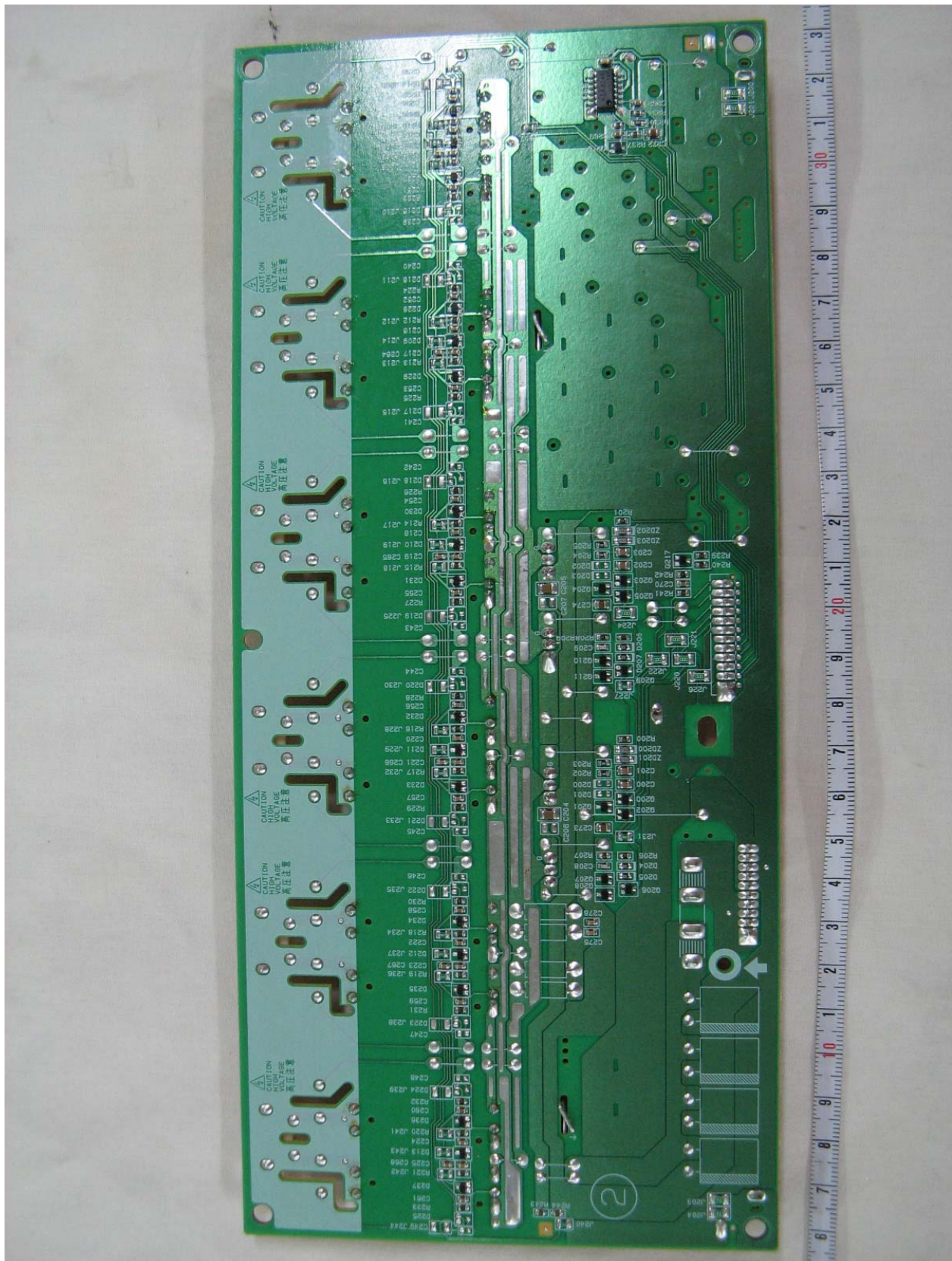
● Rear View of LB506 I/O Board



● Front View of Inverter Board



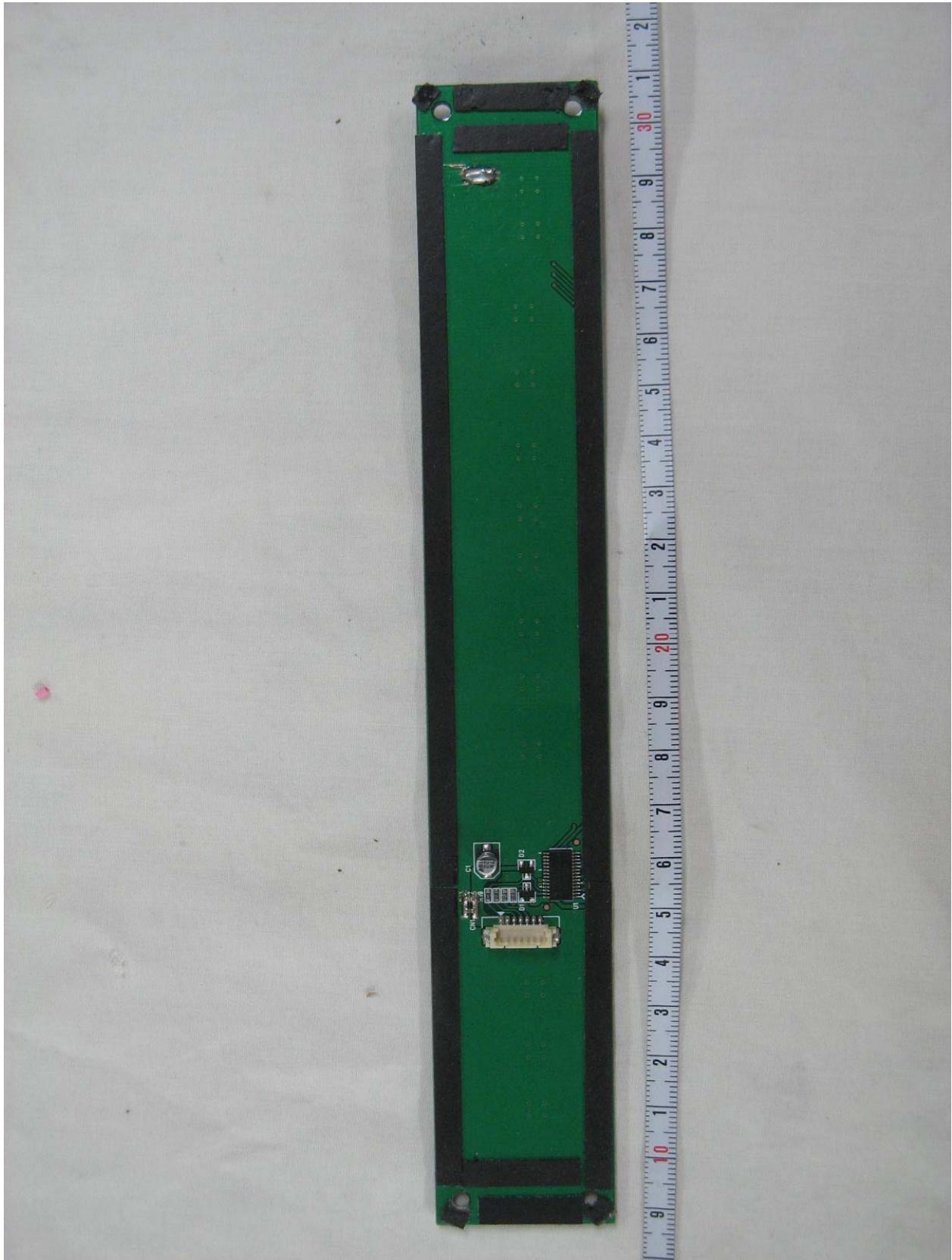
● Rear View of Inverter Board



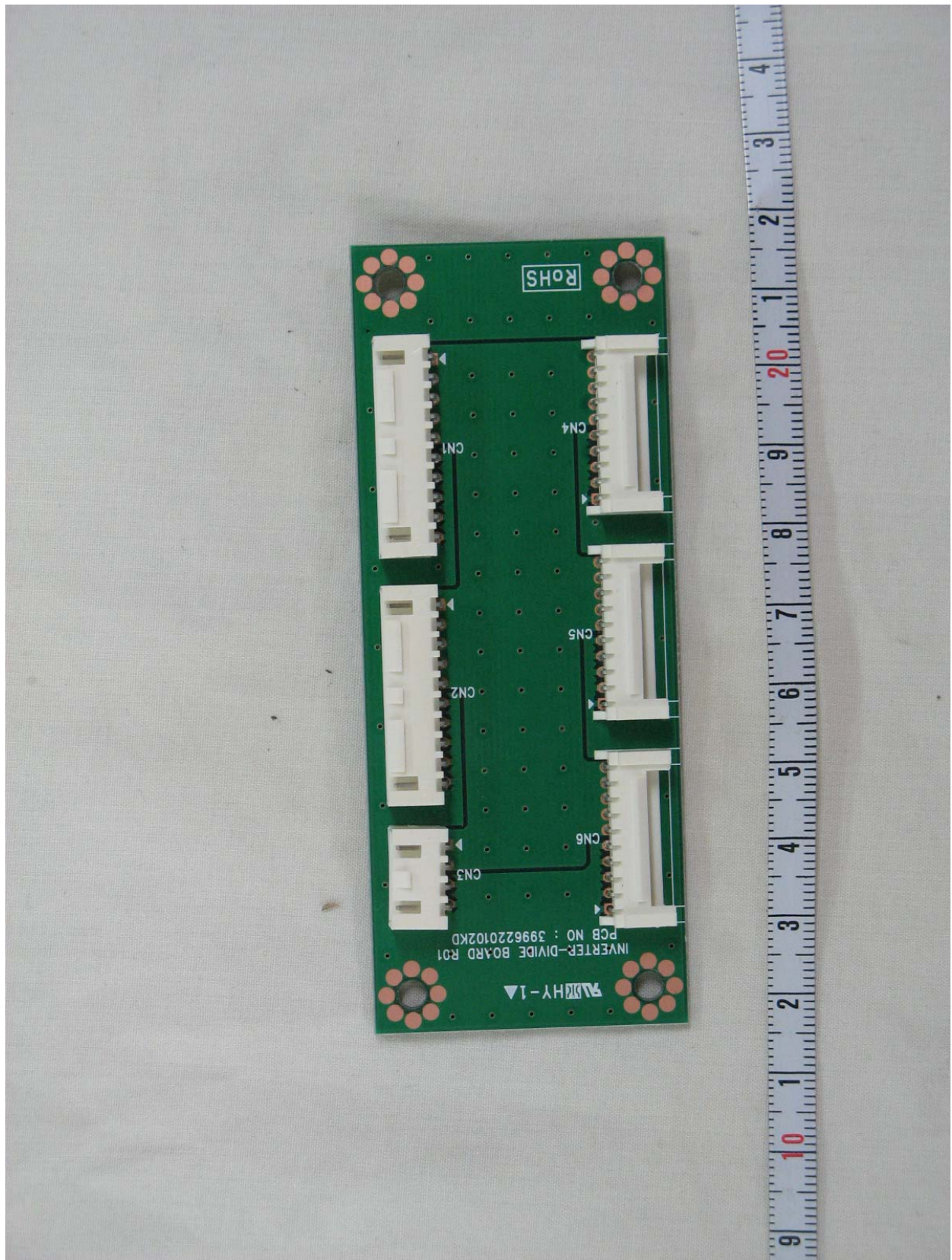
● Front View of Status Indicator Board



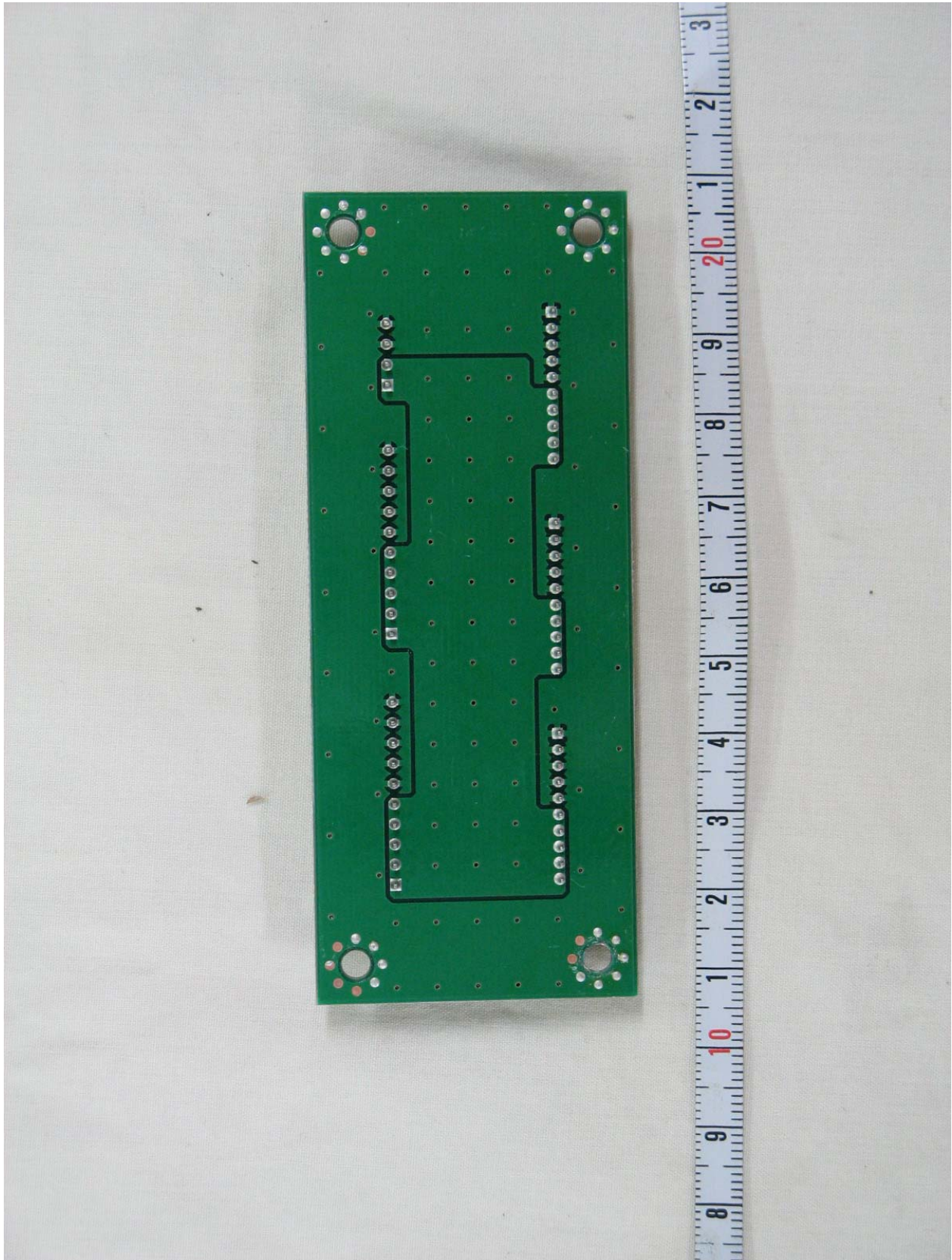
● Rear View of Status Indicator Board



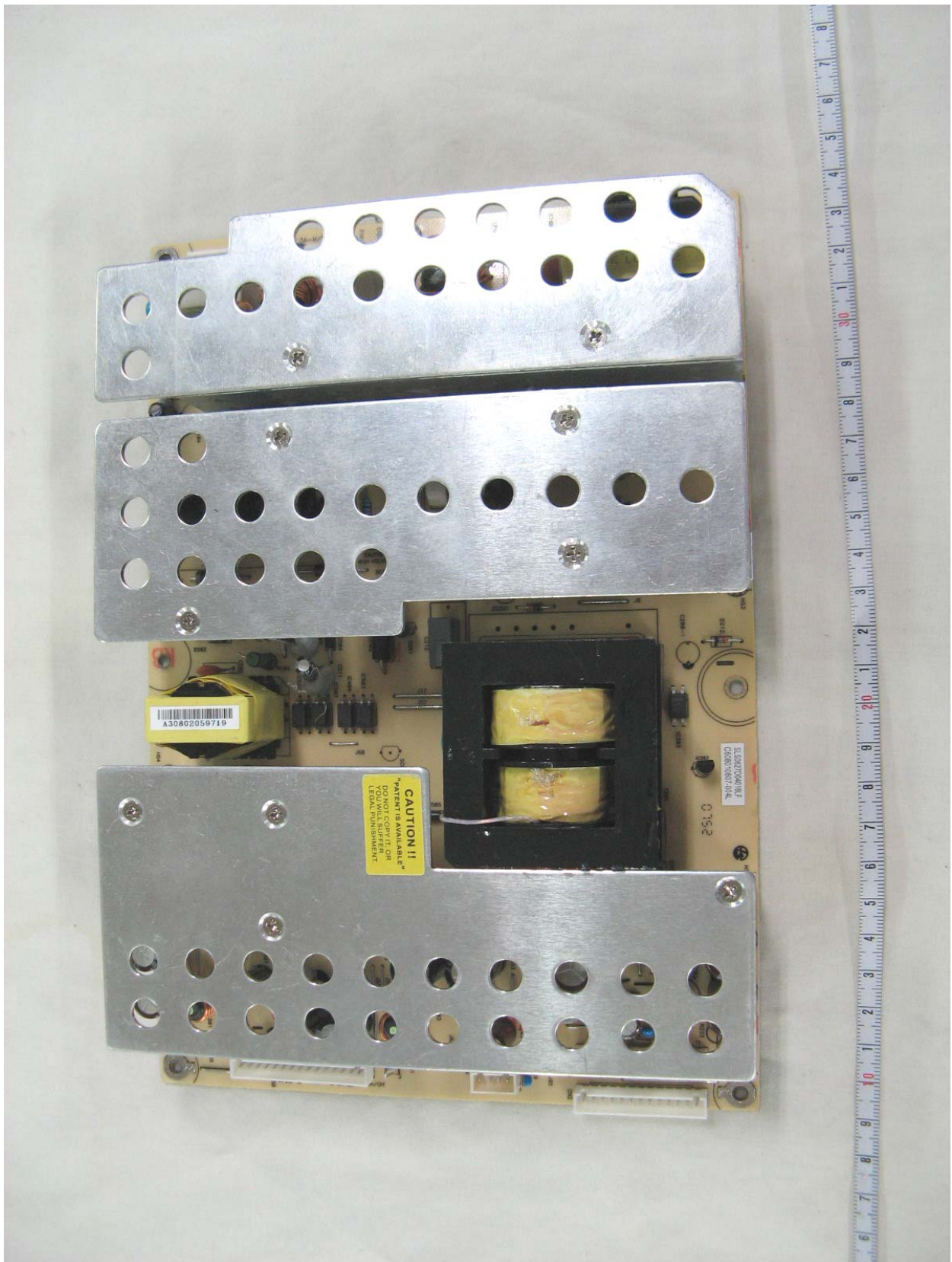
● Front View of Inverter Divide Board



● Rear View of Inverter Divide Board



● Front View of SMPS



● Rear View of SMPS

