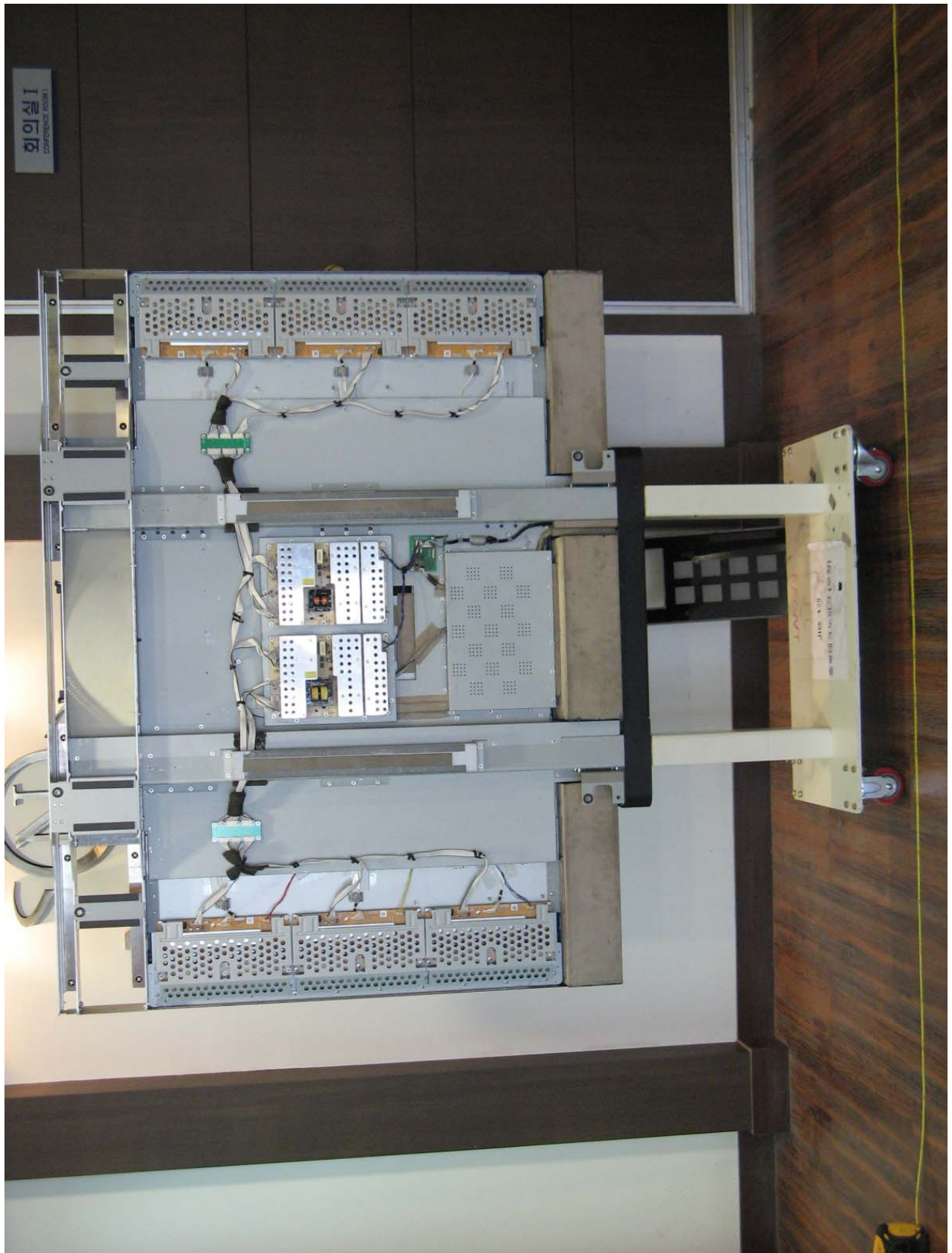


- Inside View of EUT

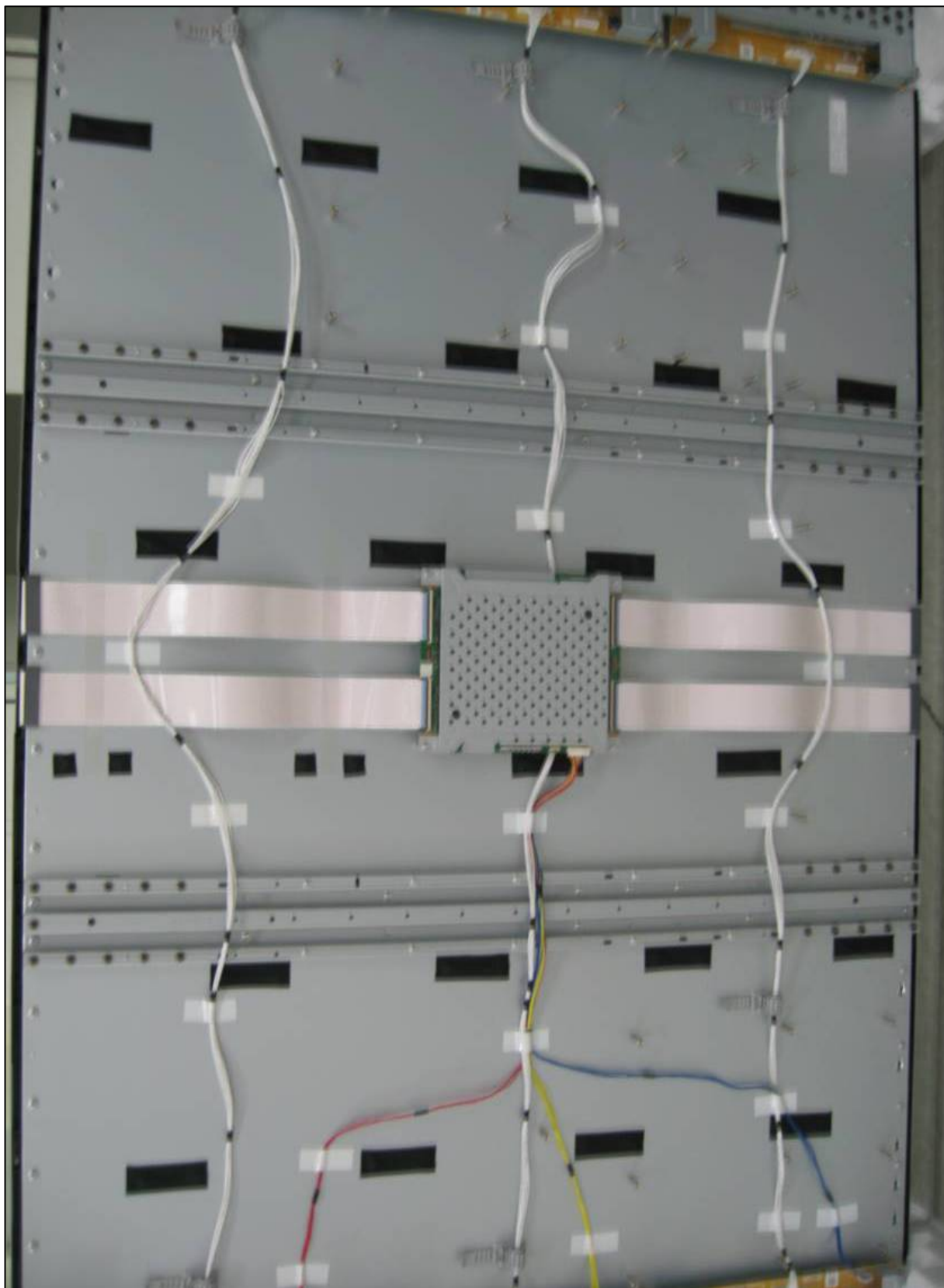


● Front View of LCD Panel

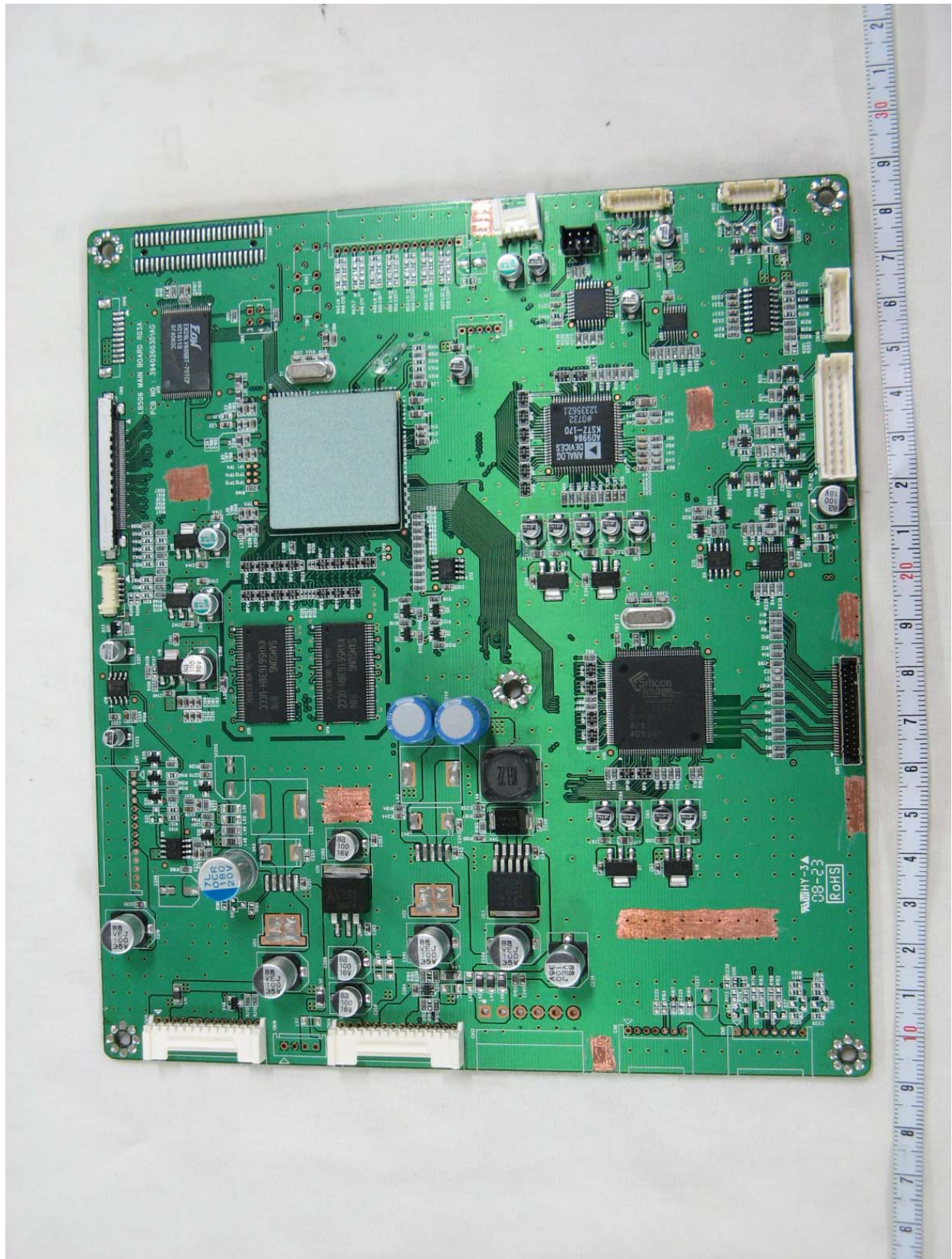




● Rear View of LCD Panel

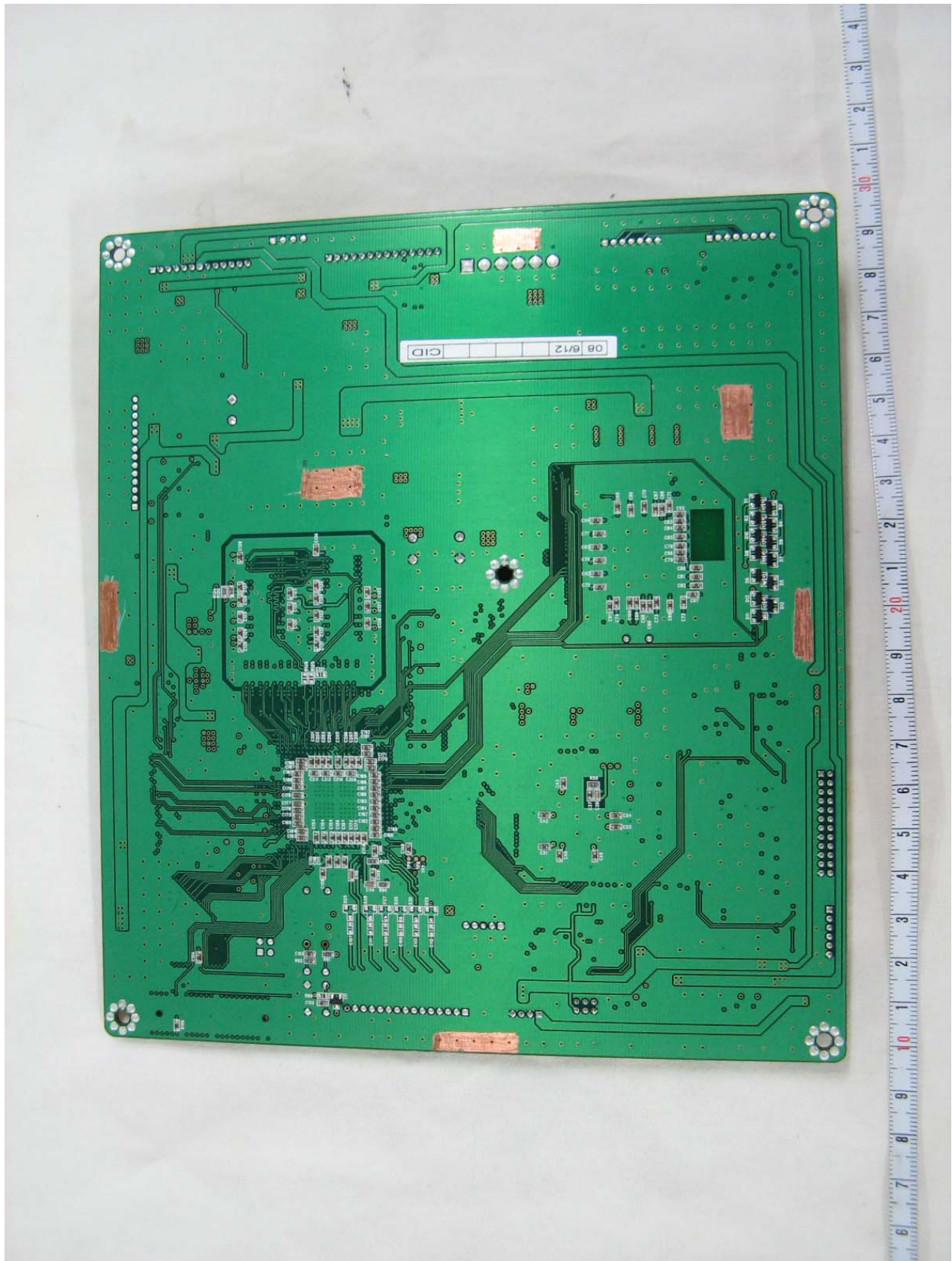


● Front View of LB506 Main Board

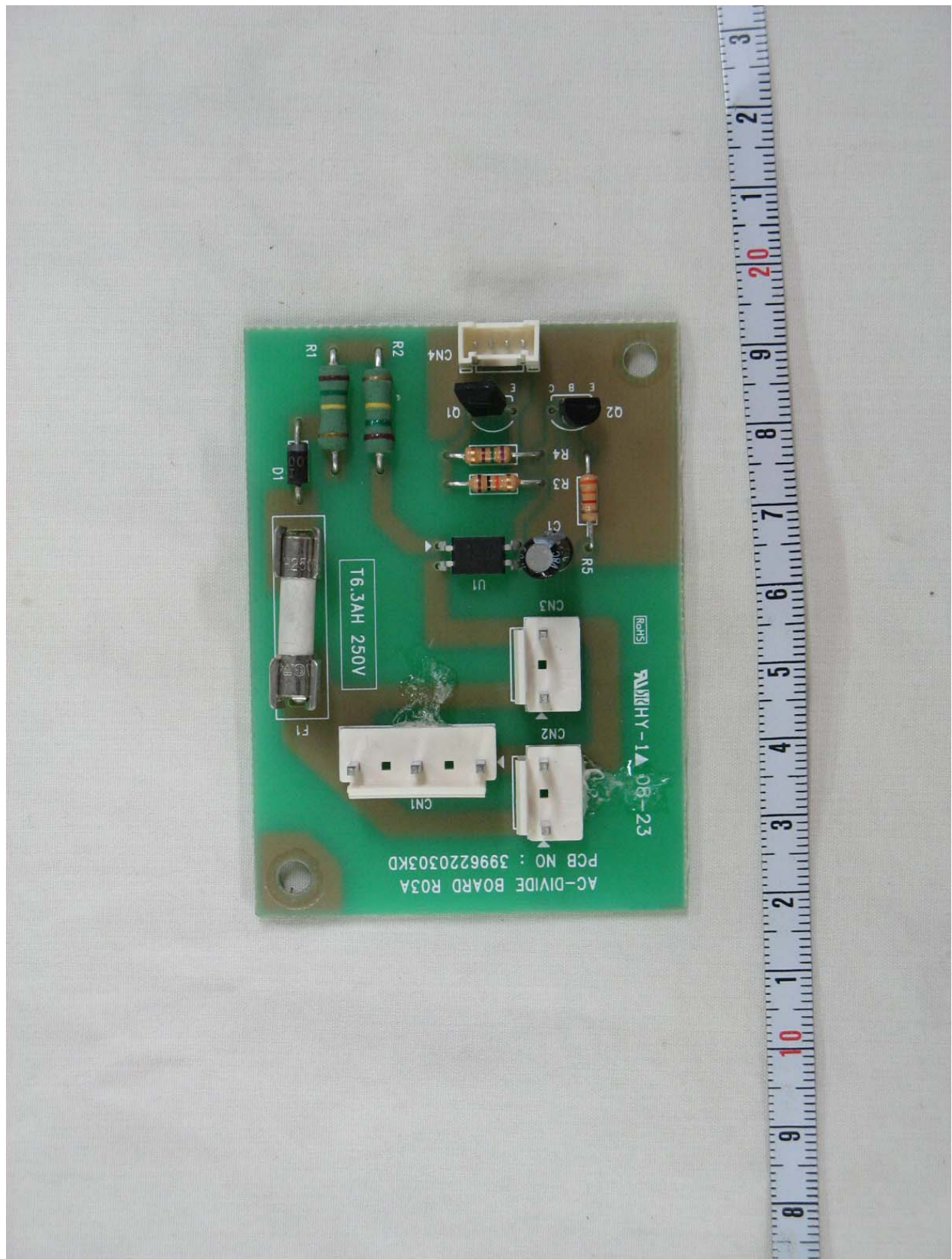




● Rear View of LB506 Main Board

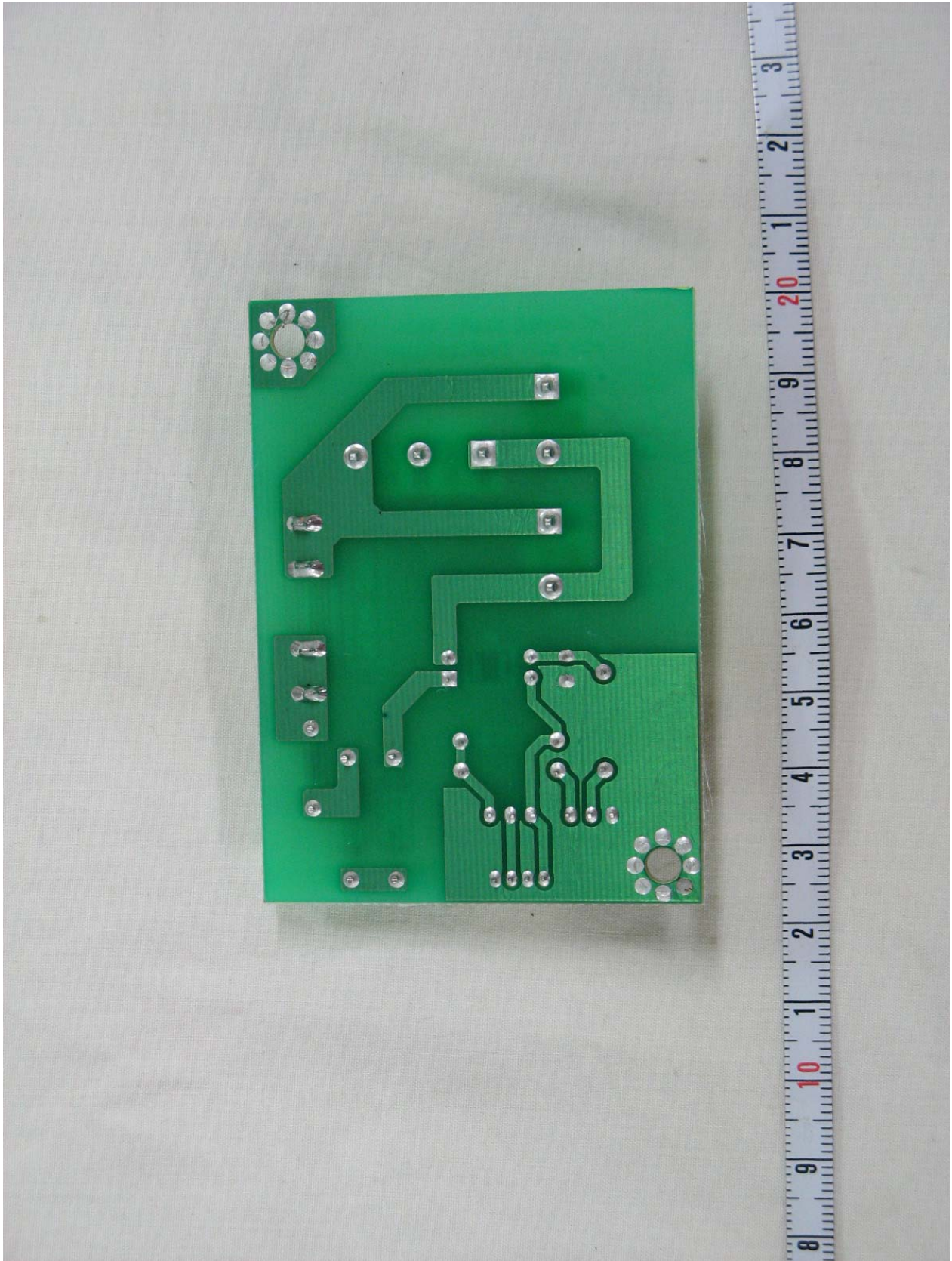


● Front View of AC Divide Board

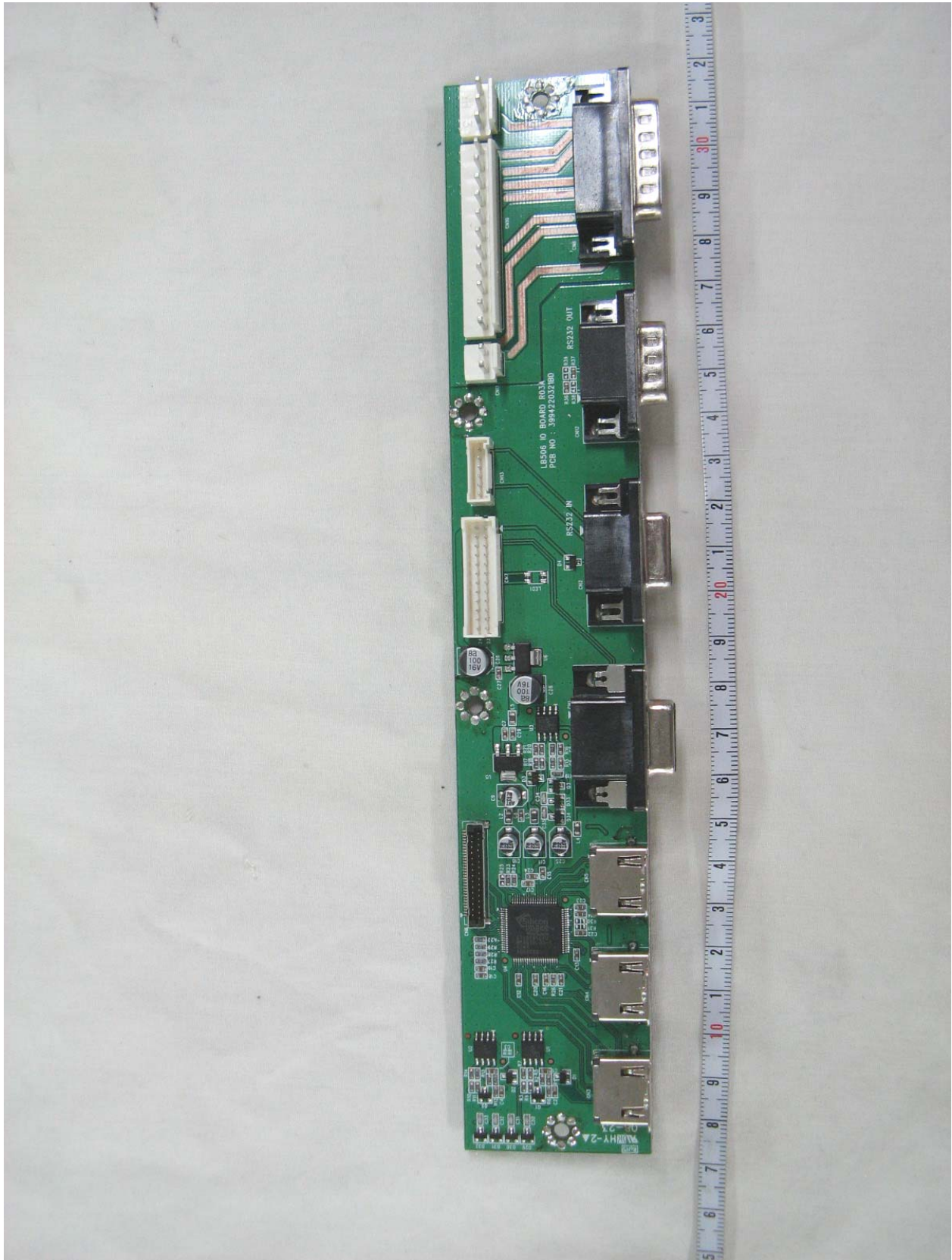




● Rear View of AC Divide Board

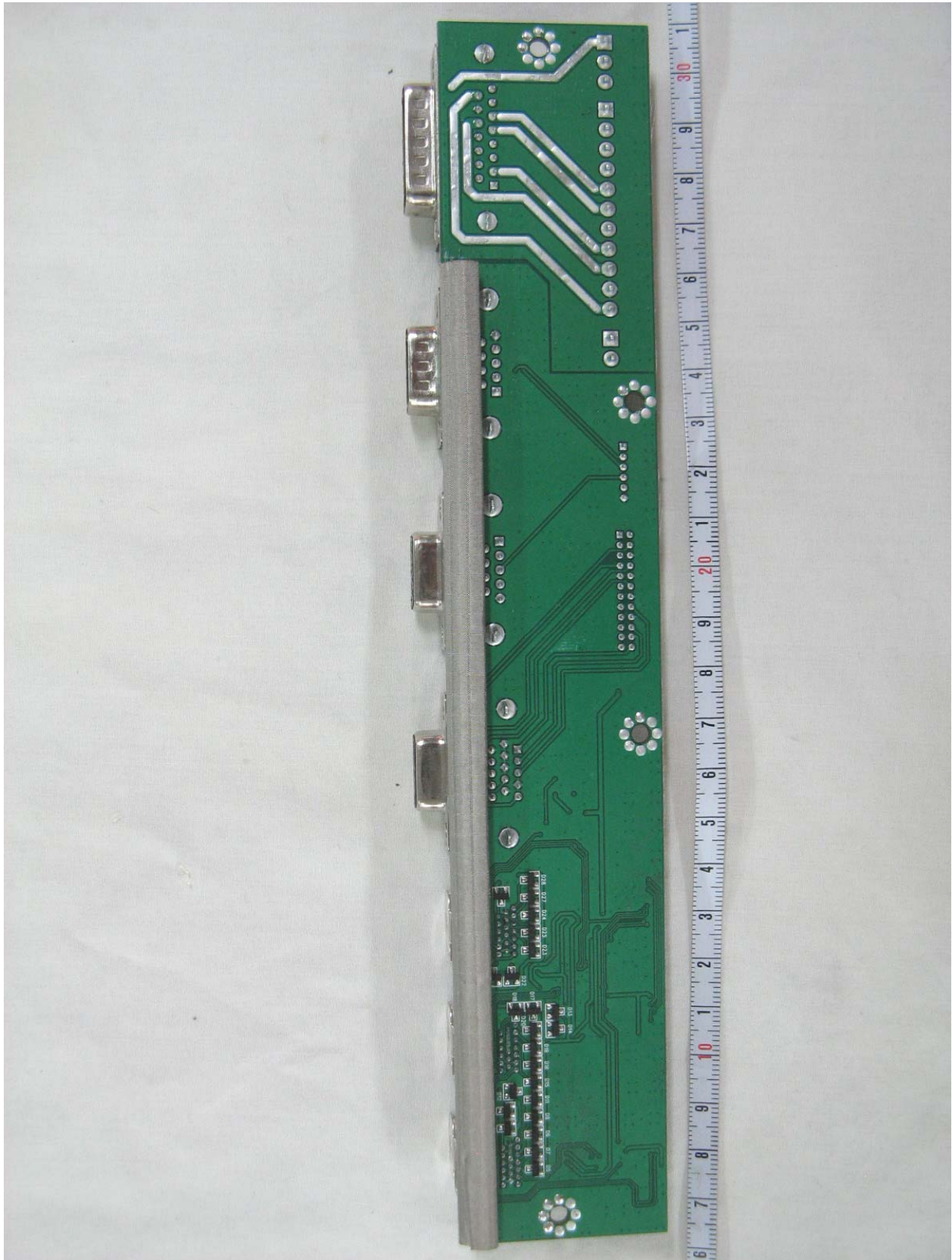


● Front View of LB506 I/O Board

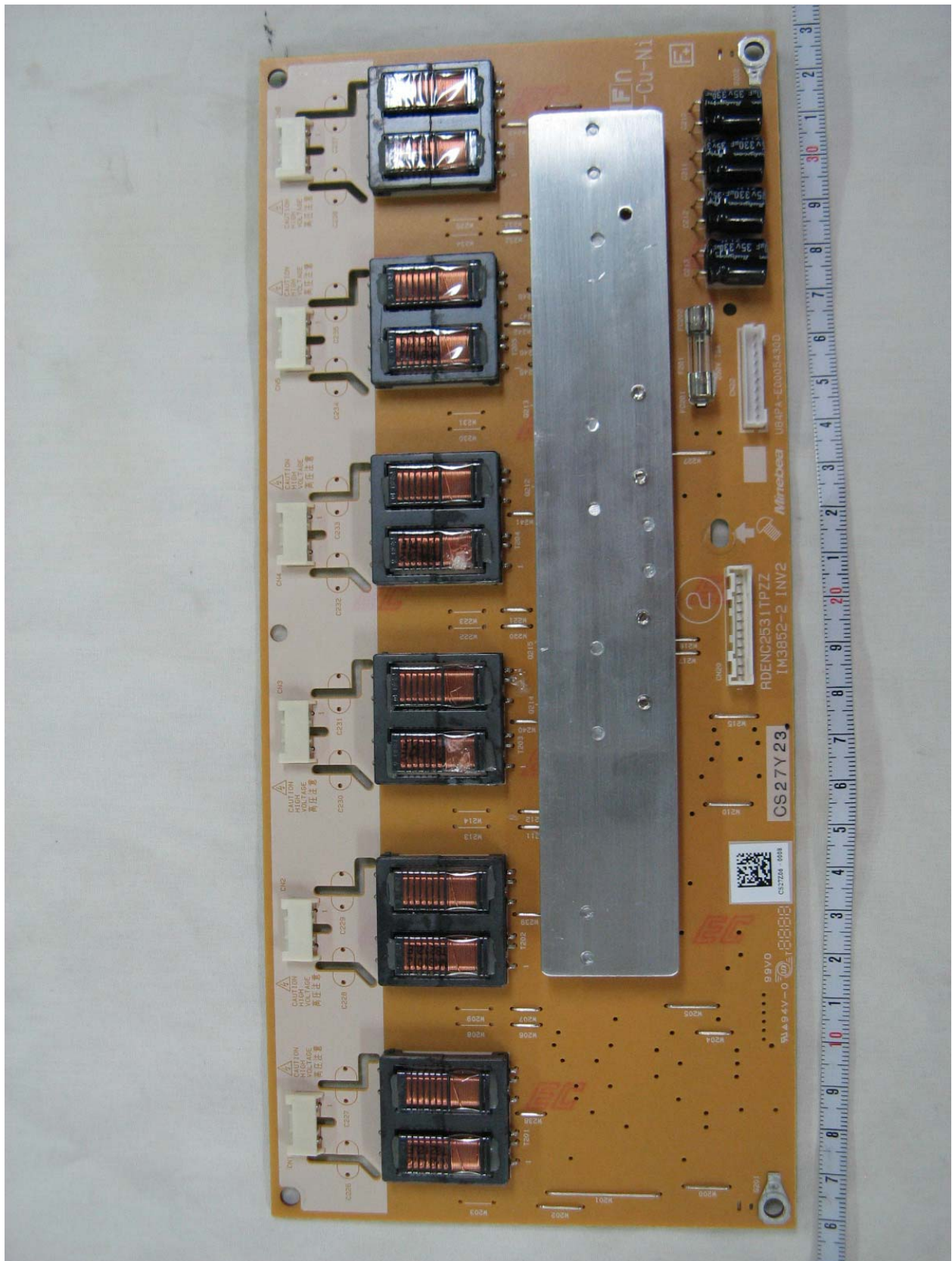




● Rear View of LB506 I/O Board

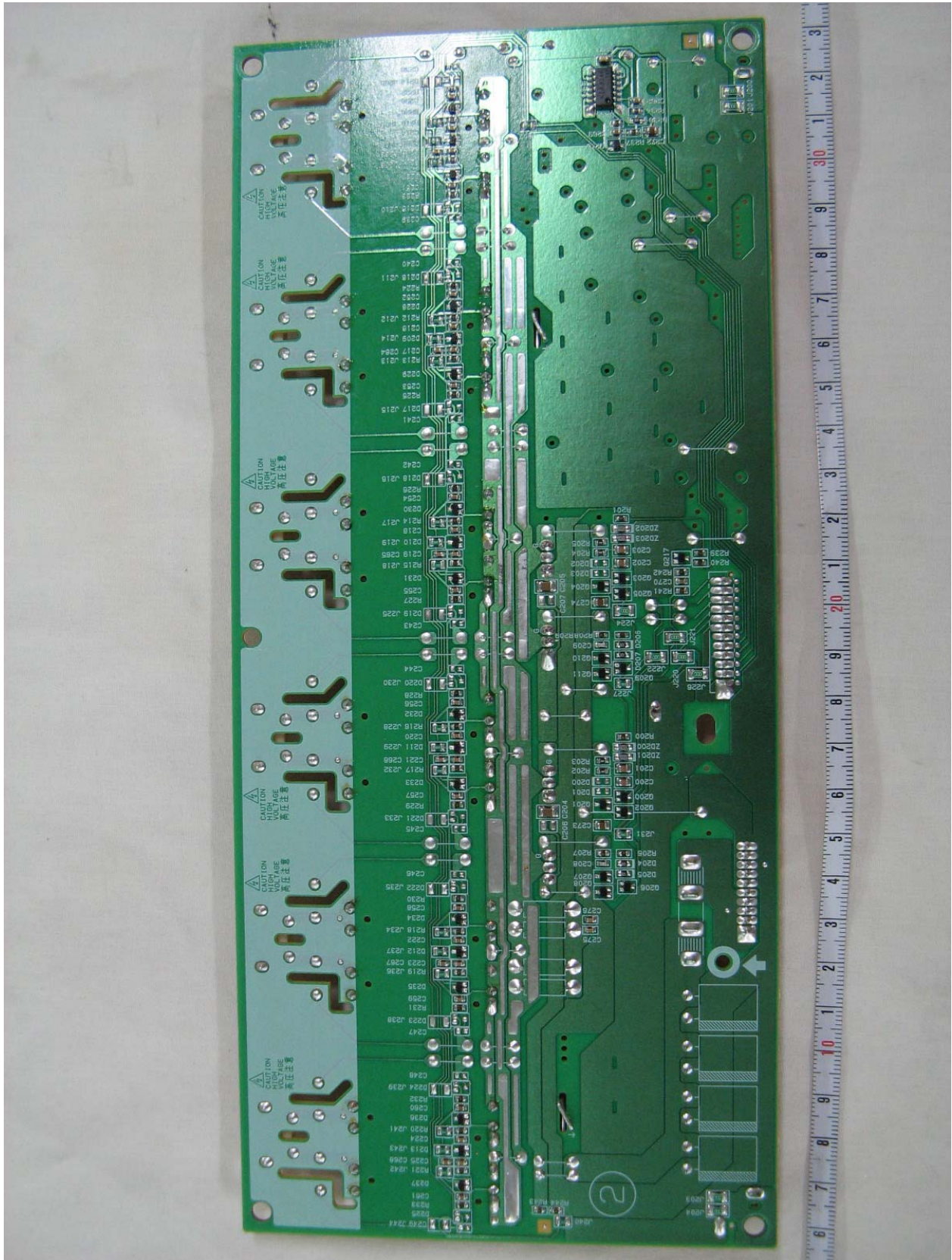


● Front View of Inverter Board

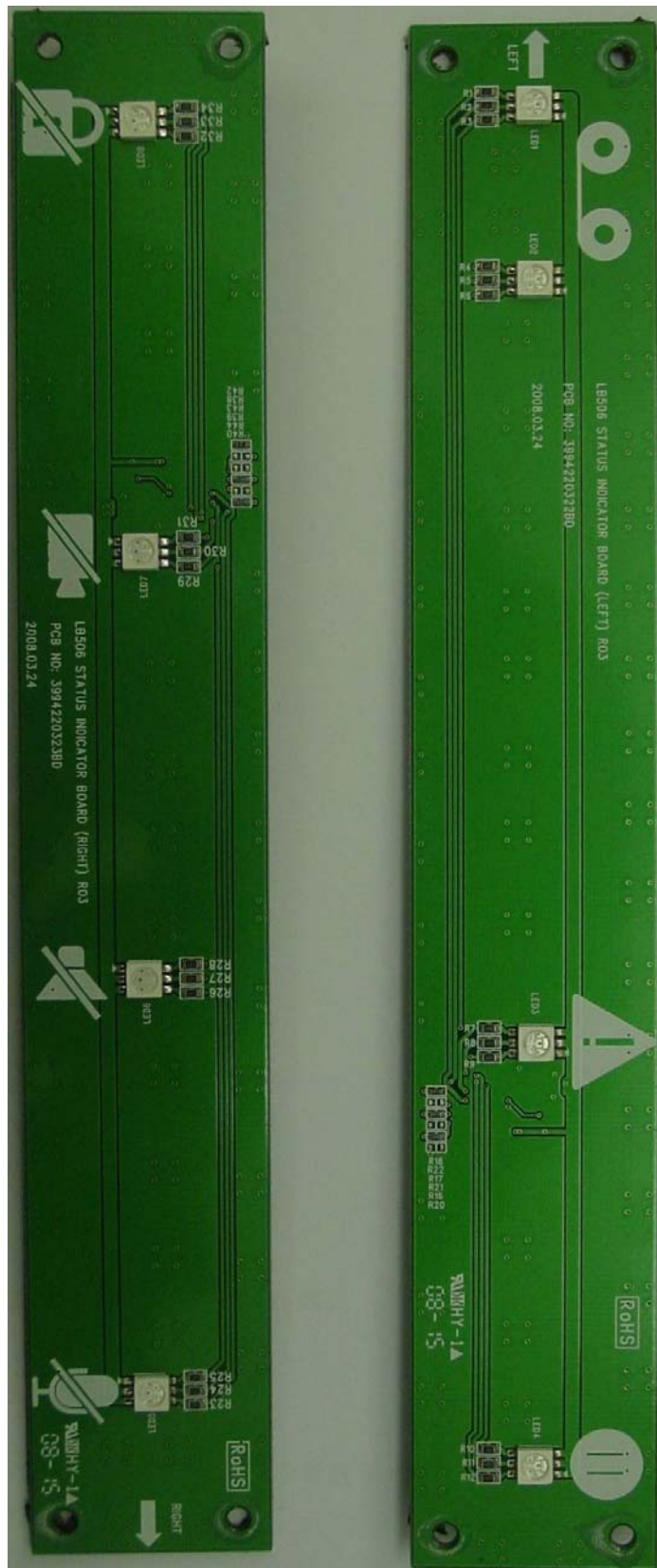




● Rear View of Inverter Board

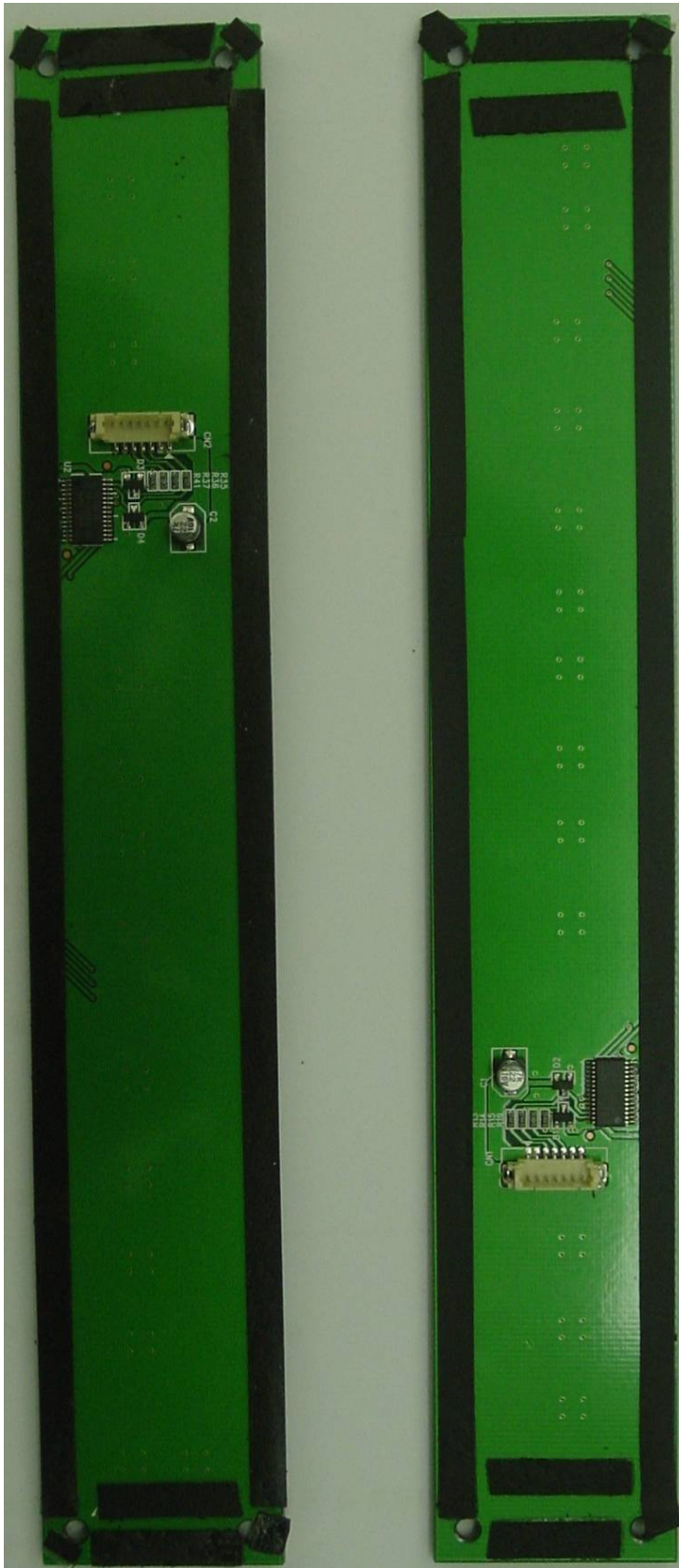


● Front View of Status Indicator Board (Before)

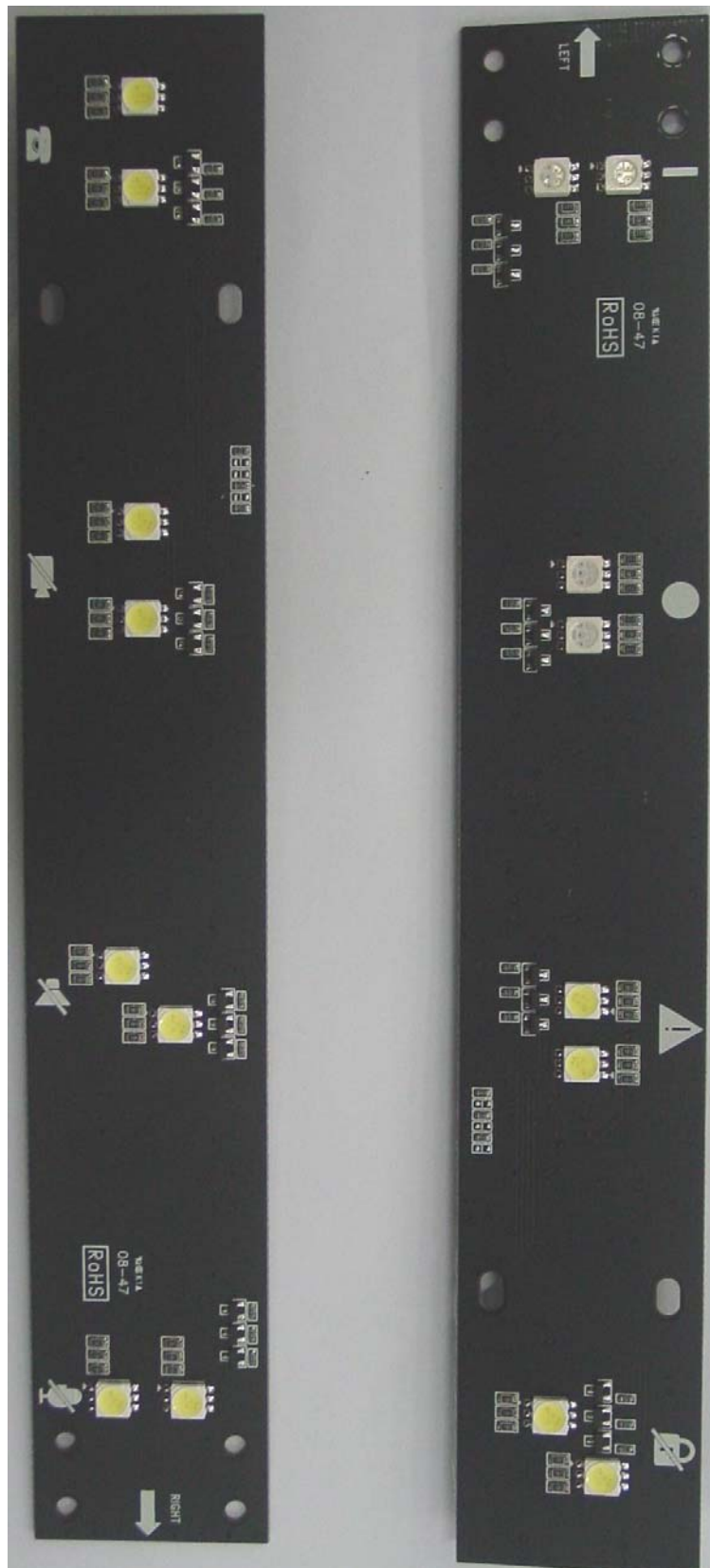




● Rear View of Status Indicator Board (Before)

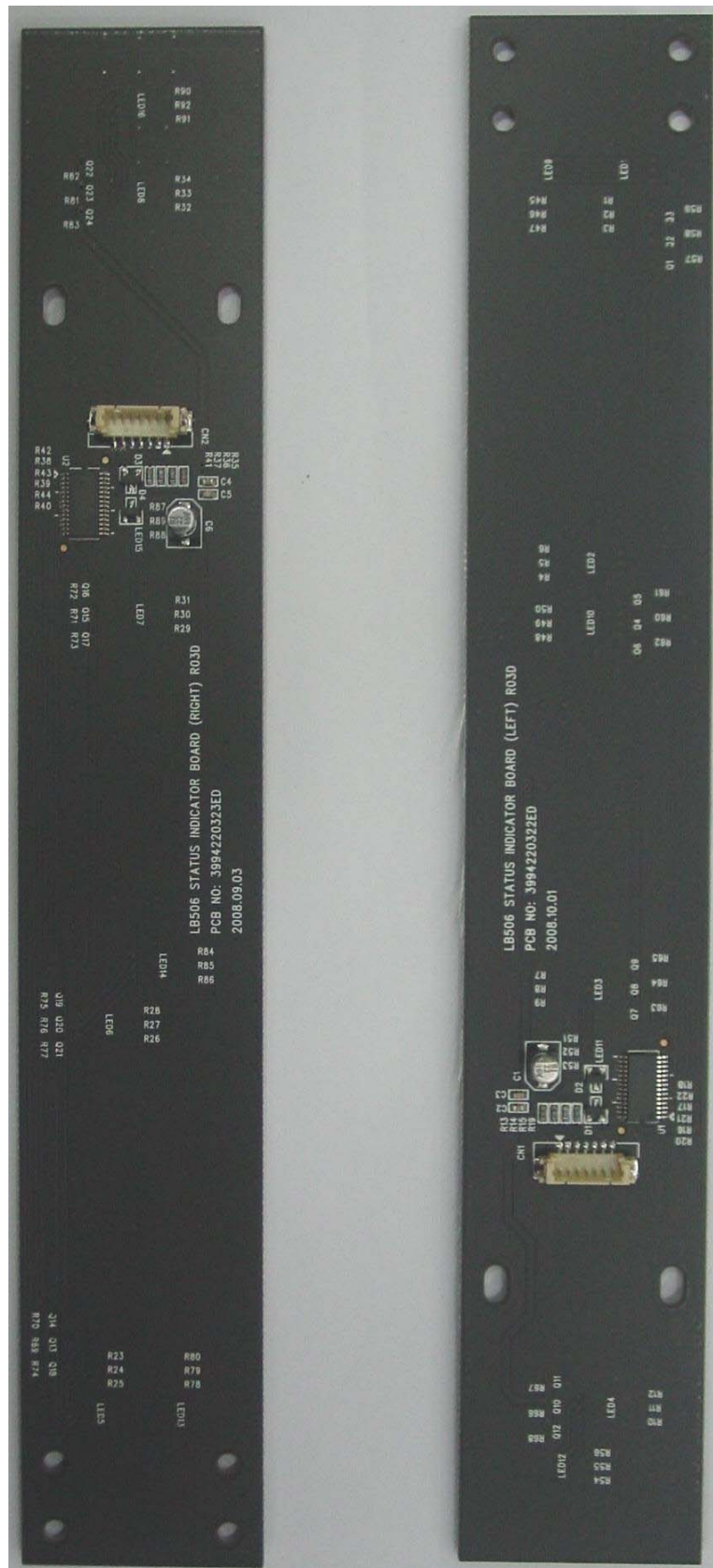


● Front View of Status Indicator Board (After)

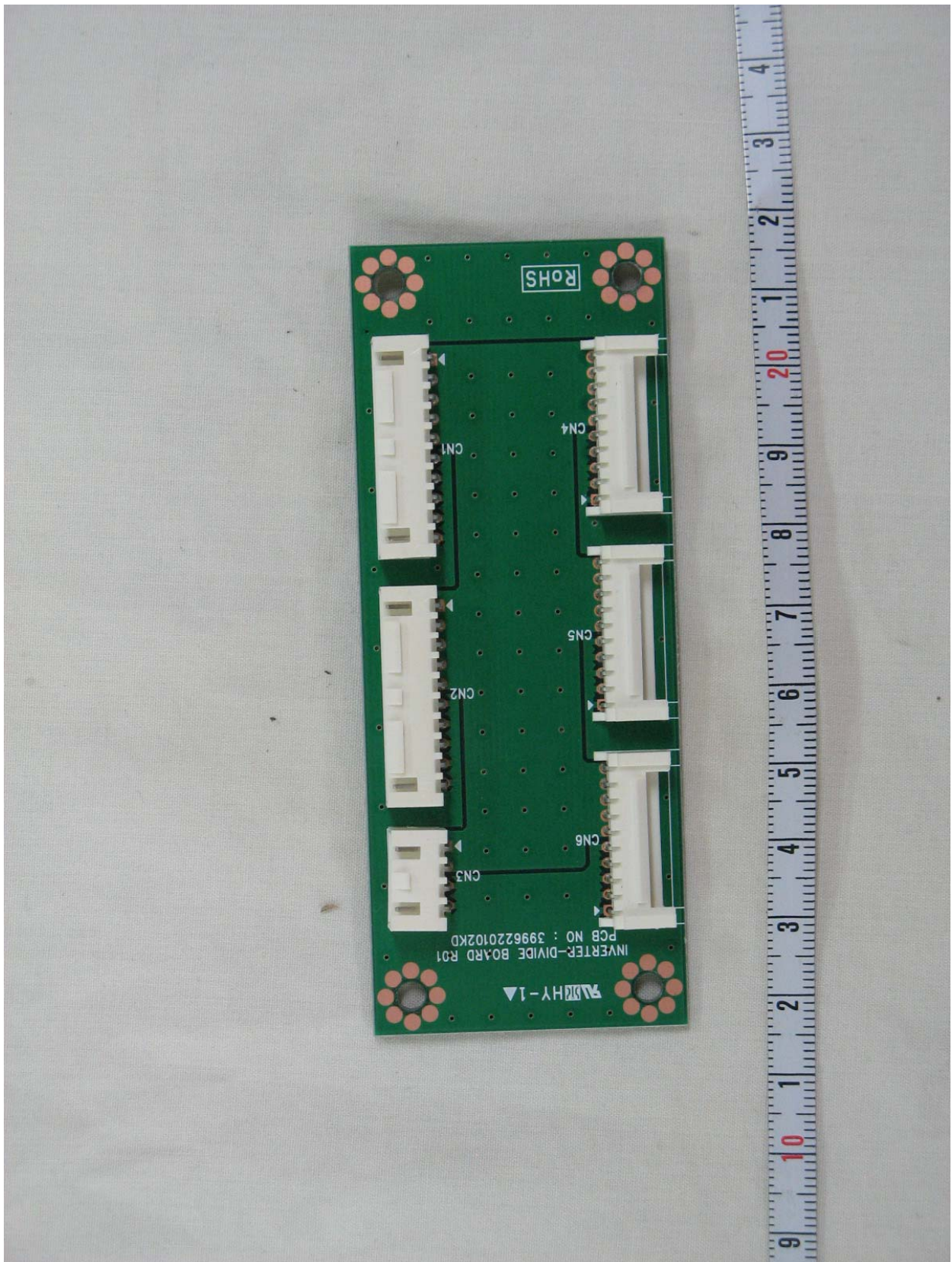




● Rear View of Status Indicator Board (After)

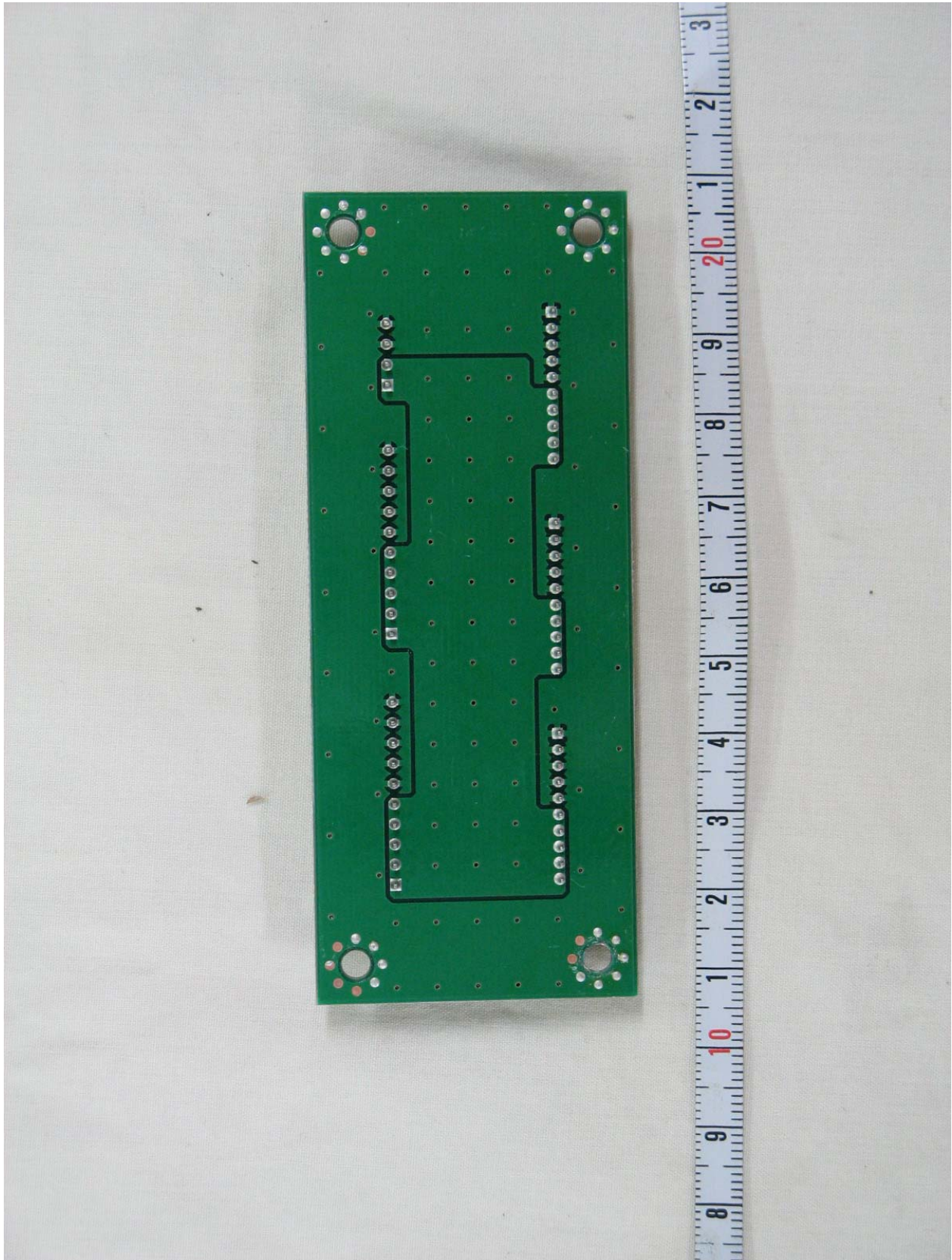


● Front View of Inverter Divide Board



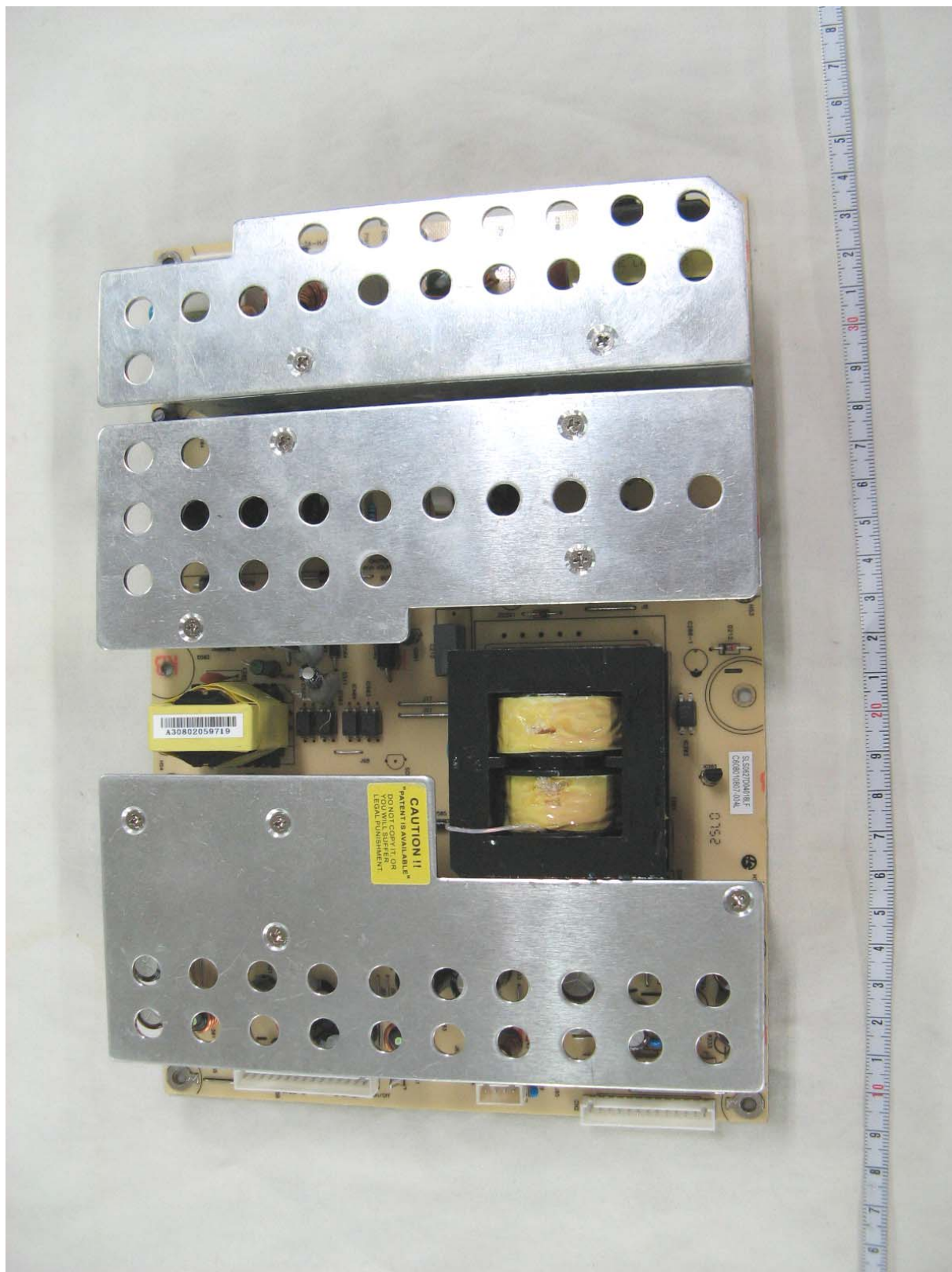


● Rear View of Inverter Divide Board



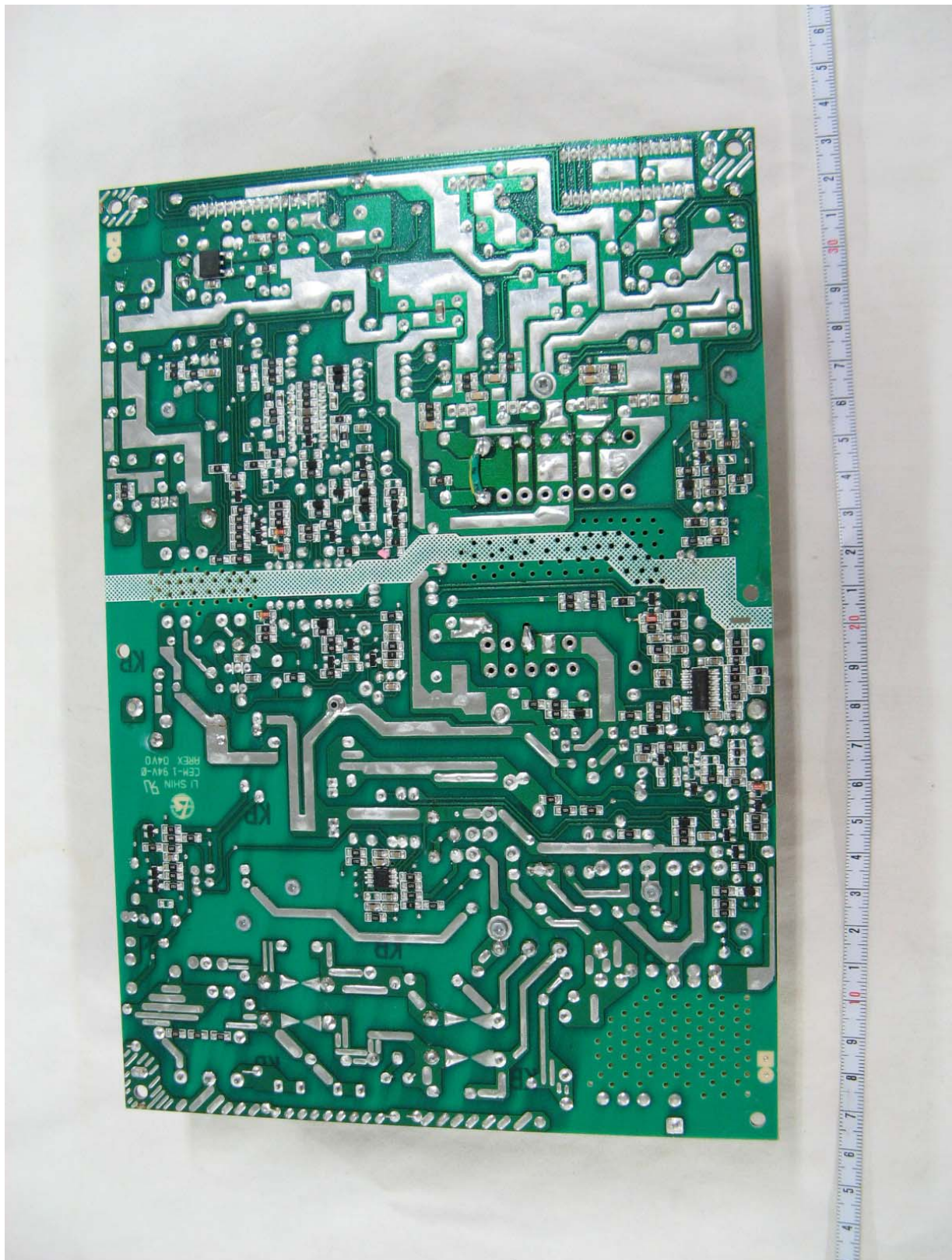
● Front View of SMPS Left\_Before

(Power supply type, 0627D04349(R1) which was provided with T201 type PSP8004FL)



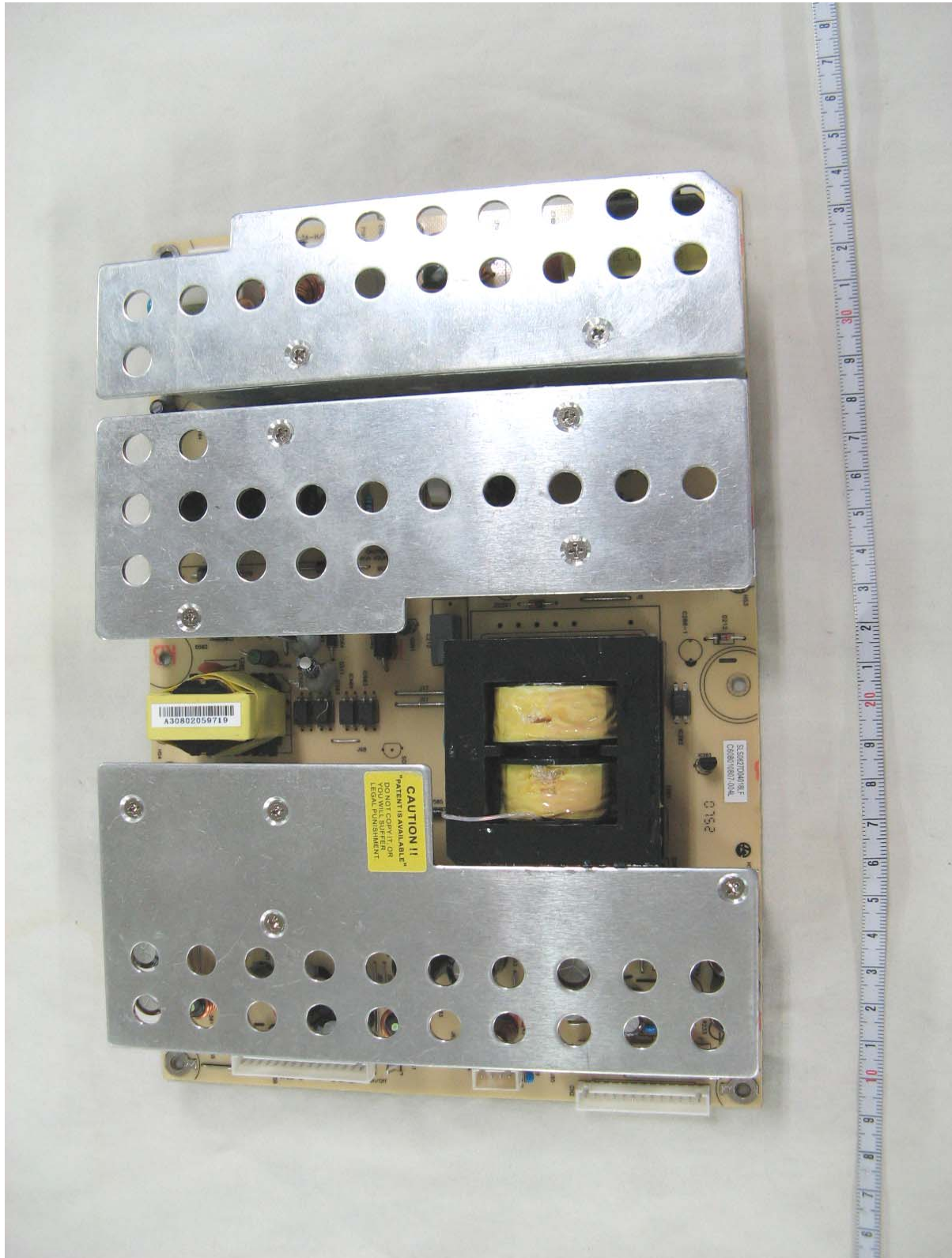


● Rear View of SMPS Left\_Before



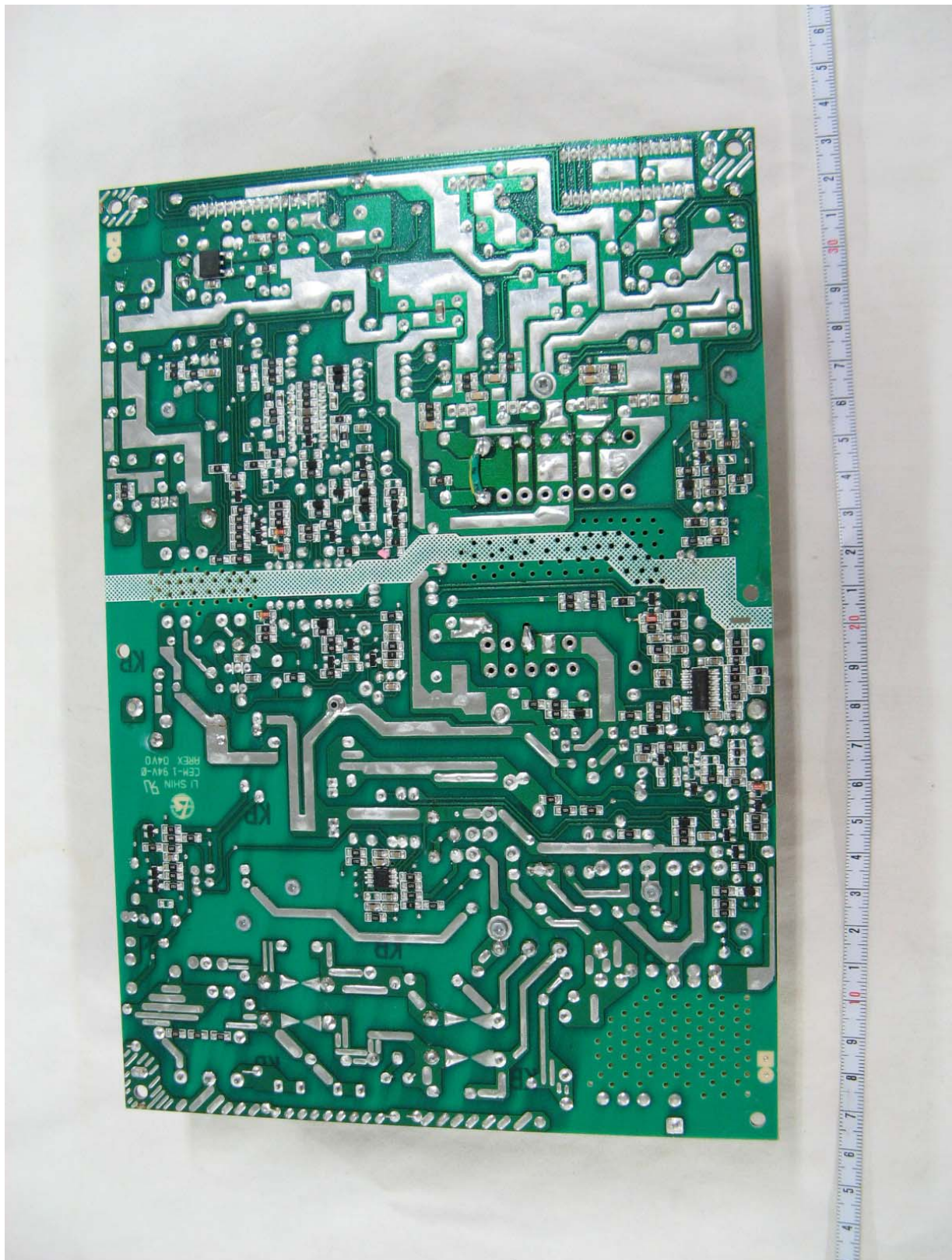
● Front View of SMPS Right\_Before

(Power supply type, 0627D04349(R1) which was provided with T201 type PSP8004FL)



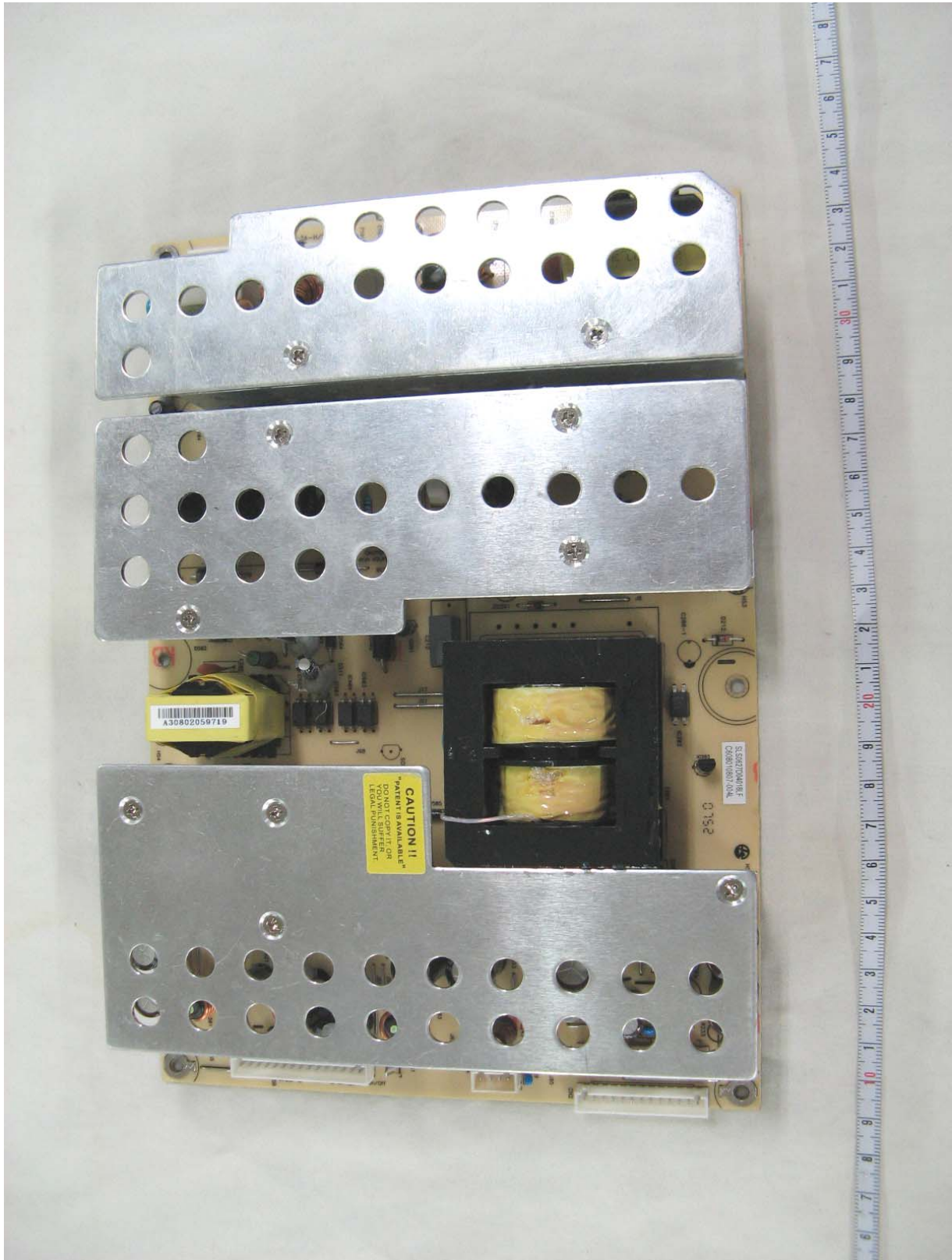


● Rear View of SMPS Right\_Before



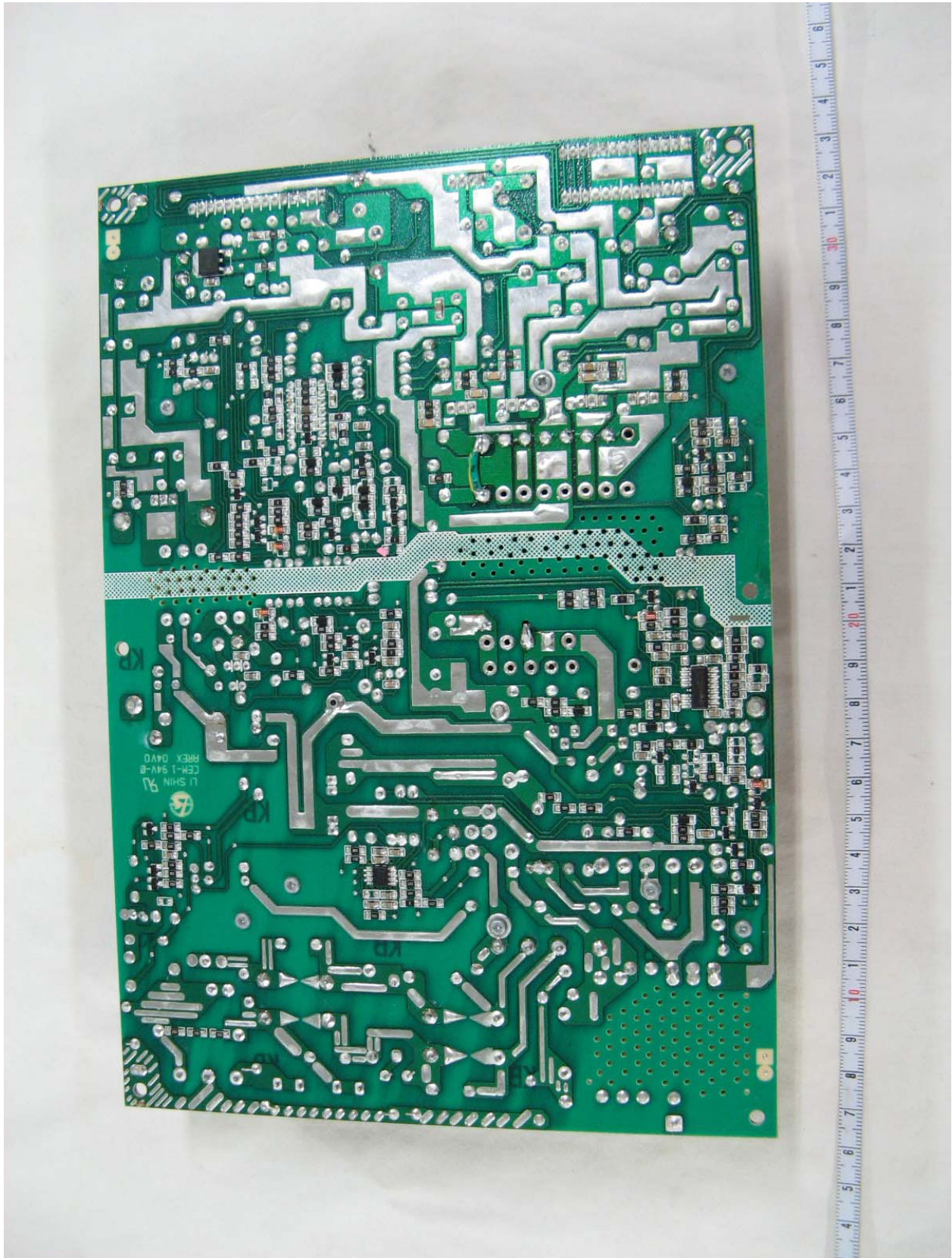
● Front View of SMPS Left\_After

(Power supply type, 0627D04349(R1) which was provided with T201 type PSP8004FL)



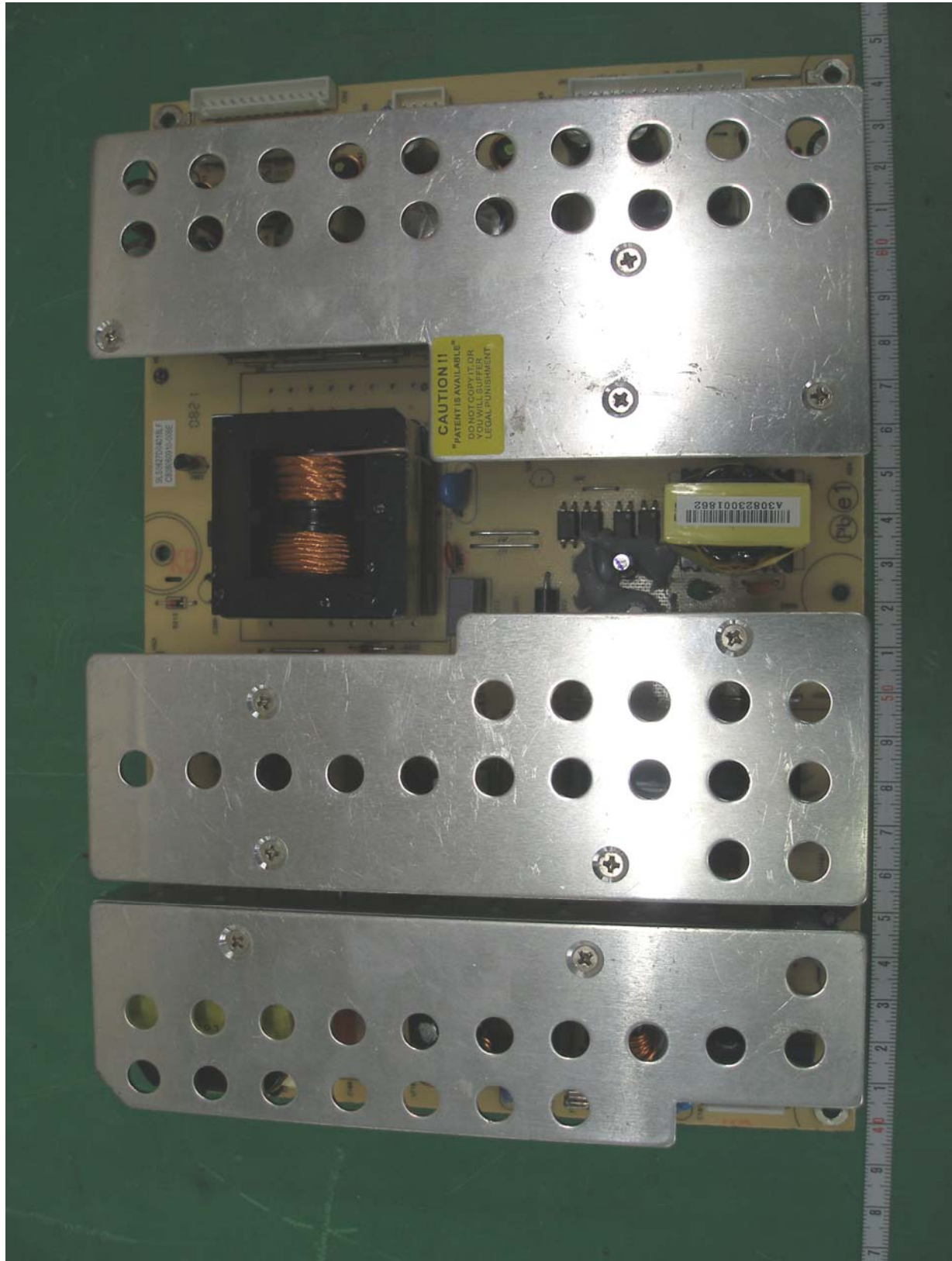


● Rear View of SMPS Left\_After



● Front View of SMPS Right\_After

(Power supply type, 0627D04349 which was provided with T201 type 5124-0611-0)





● Rear View of SMPS Right\_After

