



MIRERO TECHNOLOGY

MIRERO TECHNOLOGY CO.,LTD

6F Greenhill B/D 538-4, Sang-Dong,
Bucheon-Si, Wonmi-Gu, Gyeonggi-Do, Korea
TEL : +82-32-327-9982 FAX : +82-32-327-9985
<http://en.sorikey.com>

DIGITAL DOOR LOCK



Mr Key

VOICE VERIFICATION
DOOR LOCK



MIRERO TECHNOLOGY CO.,LTD
<http://en.sorikey.com>

Contents

1. User's Manual

1. Products Features	2
1-1. Main Features	2
2. Door Set & Parts Confirmation	3
3. The Function with the description of an each part.	4
4. Registration and deletion of a secret number and a password	5
4-1. Registration of a secret number for family common use.	5
4-2. Registration of a secret number and a password in voice for individual use.	6
4-3. Deletion of a personal secret number and voice password.	7
4-4. Registration of remote control	8
4-5. Re-registration of remote control when one is missing.	9
5. Link Function with Videophone	10
6. Volume Control	10
7. Unlock / Lock the Door from outside	11
7-1. Unlock the door with a personal secret number and a password.	11
7-2. Unlock the door with a secret number for family common use	11
7-3. Selection of a door lock mode	12
7-4. Unlock/ Lock the door	12
7-5. Remote control use	13
7-6. Emergency-key use	13
8. Recording and playback of messages	14
8-1. Family message recording	14
8-2. Door bell message recording	15
8-3. Playback of messages	16
8-4. Recording and playback of a visitor's message	17
9. Alarm function in Irregular entry	18
9-1. Alarm function in Irregular entry	18
9-2. A good time for exchange battery	18
10. Set up the level of voice verification	19

2. Installer's Manual

1. Digital(Voice Recognition) door lock installation guide	20
2. Test mortise system.	21

3. Caution

4. Warranty

1 Products Features

1-1. Main features

1. 4way type
You can use voice, secret number, remote controller(optional) and a key to open your door
2. Perfect Security
Four way method by Remote controller, Emergency Key, Password, Voice Recognition
3. Extended Voice and Secret Number Memory
Max 30 persons' voice and secret numbers are recordable.
4. Fuzzy Learning System
Much smarter and smarter again as you use it more and more again.
5. Automatic Door Lock
The door will be locked automatically when you close the door.
6. Superior Metal Gear
Metal gear guarantees long life excellent endurance.
7. Detailed Voice Notification
Voice notification will follow after you execute some function.
8. Family Message recording
You can leave some voice message for your family before you go out.
9. Visitor's Message Recording
Visitors can leave some voice message whenever they want.
10. Welcome Message Creating
You can make your own unique welcome message.
It can play when someone press the door bell button.

2 Door Set & Parts Confirmation



Door inside / Door outside



Remote controller
(optional)



Fixation Plate



Screw Pack



Emergency Key



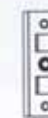
Manual Marking paper



Mortise Lock 1EA

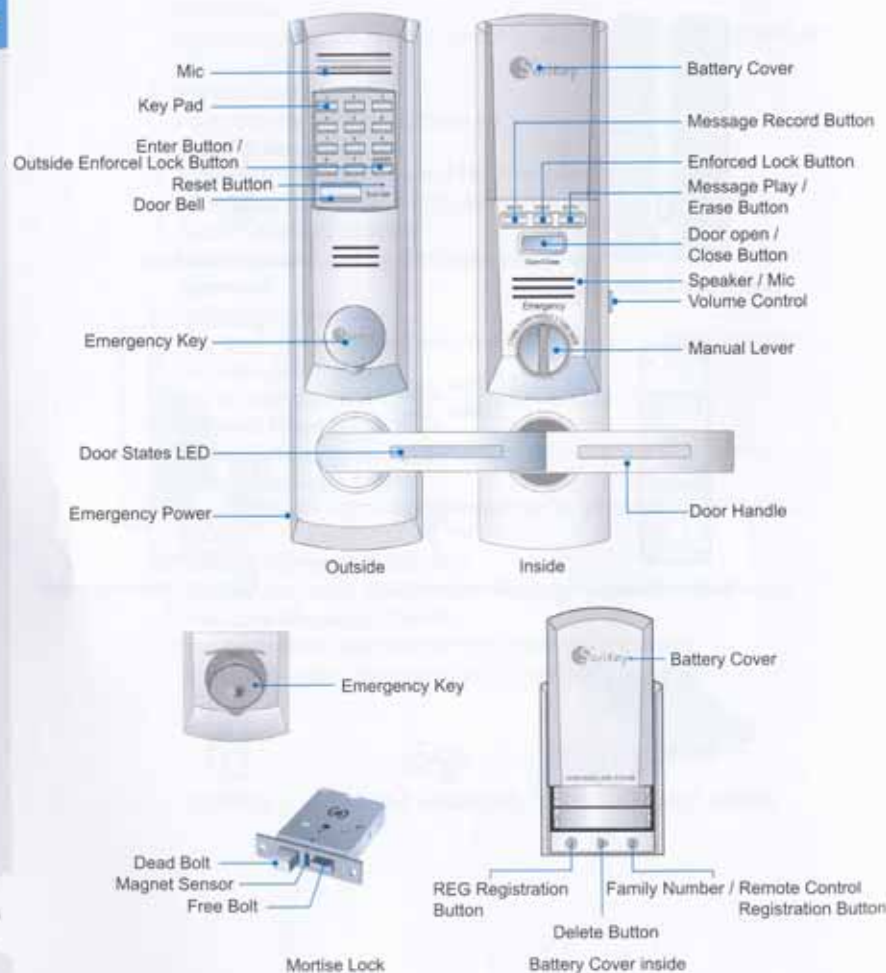


1.5V Alkaline AA 6EA



STRIKER

3 The Function with the description of an each part.

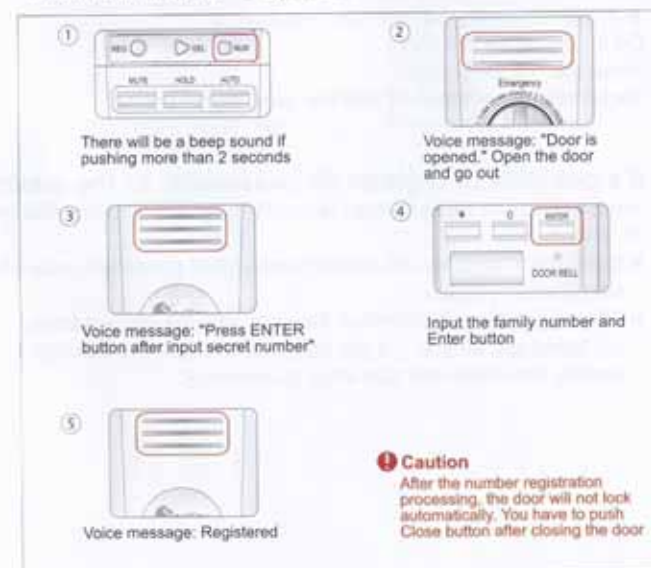


4 Registration and deletion of a secret number and a password

4-1. Registration of a secret number for family common use. (Factory Default 2580)

In some cases, your voice could be changed when you got cold or any bad condition. But you don't have to worry about it because you can unlock the door with a secret number (2~8digits) for family common use.

1. Open the Battery cover.
2. Press "NUM" button for 2 or more seconds until you hear "chirp" sound.
3. Voice notification, "Door is opened" will follow
4. Go out and close the door.
5. Voice notification, "Press enter button after input secret number." will follow.
6. After pressing a new secret number, press the "ENTER" button
7. Voice notification "Registered" will follow.



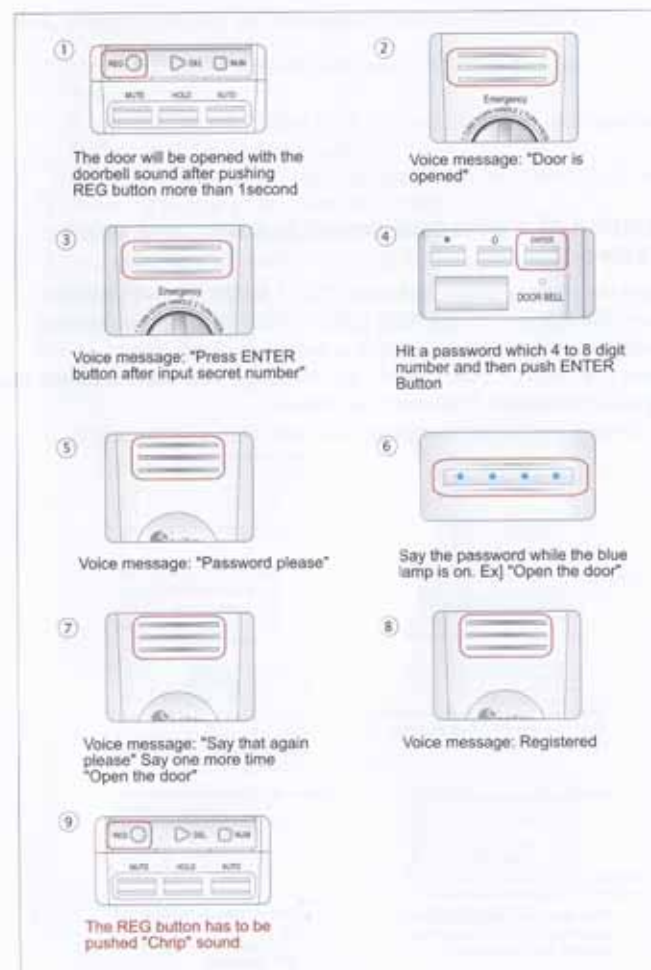
4-2. Registration of a secret number and a password in voice for individual use.

When you want to enter your house, you should press a secret number and say your own password to the voice door lock system. You should register a personal secret number and a password in voice before use it.

1. Open the Battery cover and press "REG" button for 1 second.
2. The door will open with "ding-dong" sound and a voice notification "Door is opened" will follow.
3. Go out and close the door.
4. Voice notification Press ENTER button after input secret number. will follow.
5. After pressing your own secret number you prefer, press the "ENTER" button.
6. Voice notification will play as "Password please"
7. Say your own password you wish to register while the blue lamp lights are on.
 - ▶ Please record your voice at quiet time. Because the system regards even noise as one of voice data.
8. Voice notification "Say that again please." will follow.
9. Say the password one more time.
 - ▶ Voice notification will play as "Registered"
10. Go in and close the door.
11. Press the "REG" button.
12. Registration is completed with the next "chirp" sound.

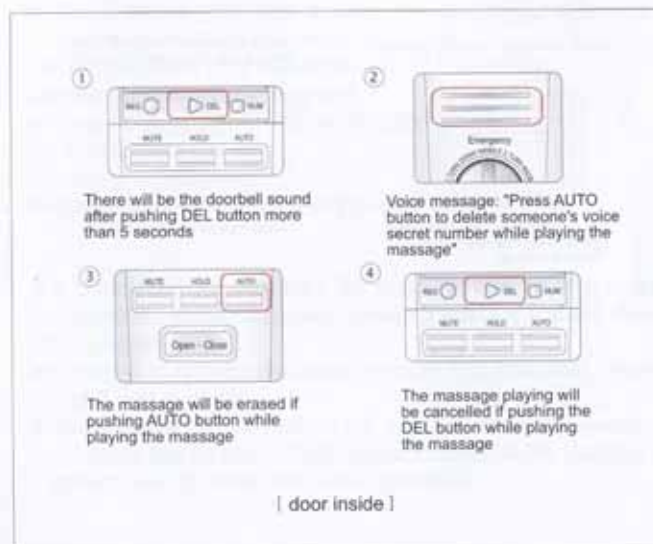
* It's possible to register 30 passwords to the maximum.

- Registration can be continued repeating step 4 ~ 9 to the maximum of 30 people.
- ▶ If you fail to register the secret number and password, return to the step 3 and try again.
- ▶ After registering, lock/unlock the door with the voice password 3-5 times just as trial. - It will help and strength the learning of the system and decrease abnormal operation.



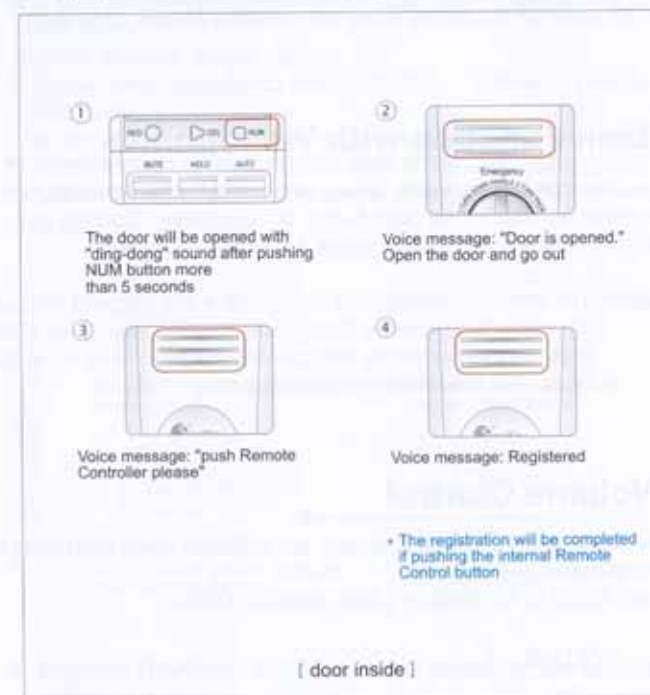
4-3. Deletion of a personal secret number and voice password.

1. Open the Battery cover and push "DEL" button for five seconds
2. Voice notification, "Press Auto button to delete someone's voice & secret number while playing the message ." will follow.
3. Press the "AUTO" button when the message you want to delete plays.
▶ Voice notification "Deleted." will follow
4. All of voice messages remained play and stop automatically.



4-4. Registration of remote control(optional)

1. Open the Battery cover and push "NUM" button for five seconds
Press the "NUM" button for 5 or more seconds until you hear "chirp" and "ding-dong" sound.
▶ Voice notification "Press remote controller please" will follow
2. Press "0" button of the remote control.
3. Voice notification "Registered" will follow.
4. You can register remote controls to the maximum of 10.
(2-4 step recursion).
5. If you push the "NUM" button, registration is completed.



4-5. Re-registration of remote control when one is missing.

1. Open the Battery cover and push "NUM" button for five seconds
Press the "NUM" button for 5 or more seconds until you hear "chirp" and "ding-dong" sound.
▶ Voice notification "Press remote controller please" will follow
2. Press the "DEL" button. Information of all remote controls registered are deleted.
Voice notification "Deleted" will follow.
3. Press again "remote control" button and finish the work.
4. Register new remote control doing "4-4 remote control registration"
5. Even though you lose just one remote control, you'd better register all again for the safety. (Only with optional remote controller)

5 Link Function with Videophone

The door can be opened by linking with videophone. To do so, connect the Input terminal to the push button of videophone. Contact any authorized customer service center for further information.

Caution The switch of videophone can cause a discharge of the batteries of door lock. Therefore, it has to be Contact way point. When supplying power to the videophone, the power has to be DC 6-9V. Be careful the polarity when connecting.

6 Volume Control

The switch which there is a control the guidance voice and levels of a chime-bell sound.

It can adjust to the 3 steps: Loud / Medium / Small.

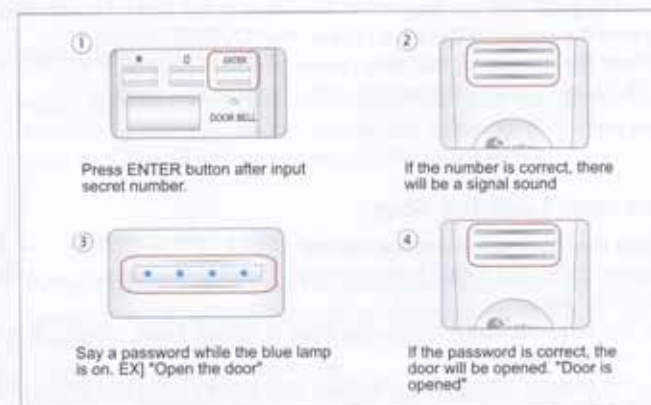
VOLUME



7 Unlock / Lock the Door from outside

7-1. Unlock the door with a personal secret number and a password.

1. Input personal secret number and press 'ENTER' button
(You can hear "chirp" sound)
2. Say your own password(ex. Open the door!) while the blue lights are on.
3. If your password is correct, voice notification "Door is opened" will follow.
4. Open the door and go inside.
5. If your voice is incorrect, voice notification, "Password please." will follow.
▶ Say your password again in the same voice with the registered one.
6. The door lock system stops in case of the second discord of password with the registered voice. Then restart the first step.



7-2. Unlock the door with a secret number for family common use

1. Input a family secret number and press "ENTER" button
2. If the secret number is correct, voice notification "Door is opened" will follow.
* If you input incorrect number three times, the door lock system rejects any key operation with warning "chirp" sound for a minute.

7-3. Selection of a door lock mode

Setting of an automatic /manual lock mode

This door lock system has two locking modes - The one is an manual locking, the other is an automatic locking.

1. Press "AUTO" button for 1 second until you hear "bbilllig" sound.
2. Whenever press the button, it is converted to a manual lock or an automatic lock mode. And voice notification "automatic lock" or "manual lock" will follow.

An automatic lock mode

It's a convenient function because the door is locked automatically whenever you close the door.

1. The door is locked automatically within 2 seconds after closing the door.
2. If the door remains open and unlocked for 15 seconds, voice notification, "Please close the door." will play.

A manual lock mode

It's a convenient function to let the door opened for a long time or for you to go in and out frequently. The door is not locked automatically.

1. From the inside of the door : press the "CLOSE" button.
2. From the outside of the door : press the "*" button.
"*" button is only for locking in the manual lock mode.

7-4. Unlock/ Lock the door

Use the door open / close button

1. press "OPEN/CLOSE" button shortly, the door is unlocked or locked with a "bbilllig" sound
2. In the automatic lock mode, the door is locked automatically when you close the door.
3. In the manual lock mode, the door isn't locked until you press the "CLOSE" the button.

* A manual lock mode is necessary when you want to let the door unlocked for a long time or go in and out frequently. But you should keep it in mind either to lock the door with the "" button or convert to the automatic lock mode when you go out .

Silent mode setting

This function removes the sound you get when you press any keys on the board.

1. Press "MUTE" button for a second. Voice notification, "Mute mode selected." will follow after signal sound.
2. If you want to cancel it, press "MUTE" button for a second. Voice notification, "Mute mode cancelled." will follow after signal sound.

Forced lock mode

This function makes the door lock system freeze getting rid of reaction to any key operations.

1. Press the "HOLD" button for 5 or more seconds until you hear the "ding-dong" sound. Voice notification, "Hold status." will follow.
2. Voice notification, "Hold status." plays when one operates keys to unlock the door. (The system doesn't recognize any key operations in this mode.)

If you want to cancel it, press the "open" button.

7-5. Remote control use

Within 5 meters of the inside/outside of the door, You can unlock/lock the door by pressing the remote control button for 2 or more seconds.

* You can use 10 remote controls to the maximum.

7-6. Emergency-key use

You can unlock a door with the Emergency-key when the door lock system doesn't operate because of electronic problems, missing the remote control or the password and etc.

1. To unlock a door from the inside.
Turn down the door handle and turn the "manual lever" to a right angle.
2. To unlock a door from the outside of a door with a master-key
Turn down the door handle. Insert the Emergency-key to the hole and turn it to a 180 degree.
* The "manual lever" or the Emergency-key doesn't work if the door knob is up.

8 Recording and playback of messages

8-1. Family message recording

When you are absent from home, you can use "family message recording" function that it leaves voice message to your family before you go out of home.

1. Press "MUTE" button inside of the door until You hear "Ding Dong" sound.
2. The door will be unlocked and voice notification "Door is opened" will follow.
3. You just go out and wait until you hear voice notification of "Leave a message please."
4. Immediately, voice notification "Leave a message please" will follow.
5. Record your message right after "beep" sound.
ex) "Hi, children? I go to market." (message recording time is 7 seconds)
6. Recording is completed If you heard voice notification "Your message is recorded."
7. In the case the door is automatic lock mode, the door is locked and notification "Door is closed" will follow.
8. Family message play automatically to the first one opens the door and enters.
9. If you want to hear it again later, press the button "AUTO" for five seconds



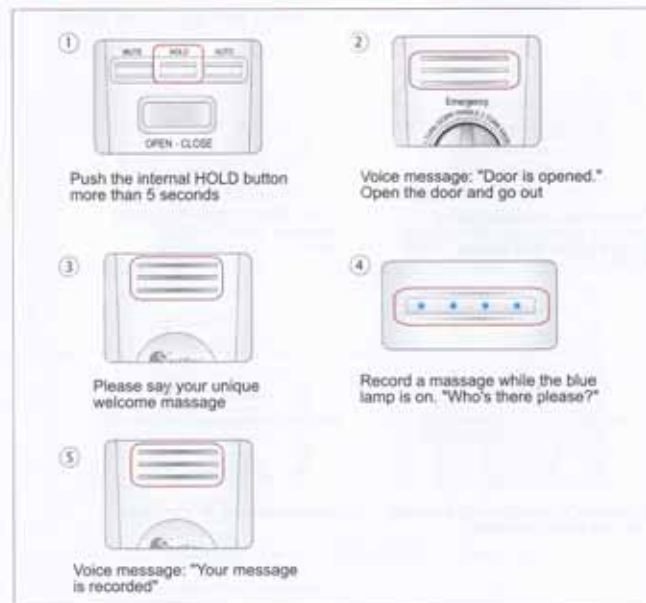
8-2. Door bell message recording

This message is to get a visitor's identification. When a visitor presses the bell, this message you recorded individually would provide guidance for him what to tell.

1. Press the "HOLD" button for 5 or more seconds until you hear "ding-dong" sound.
2. The door would open. Go out and close the door.
3. A voice notification "Please say your unique welcome message." will follow.
4. Record your message right after "beep" sound.
ex) This is John & Mary's happy house. Who's there please?
5. Recording is completed with the next "OPEN/CLOSE" sound.

! caution

The door is not locked automatically when recording is completed.
Lock the door by pushing the "OPEN/CLOSE" button



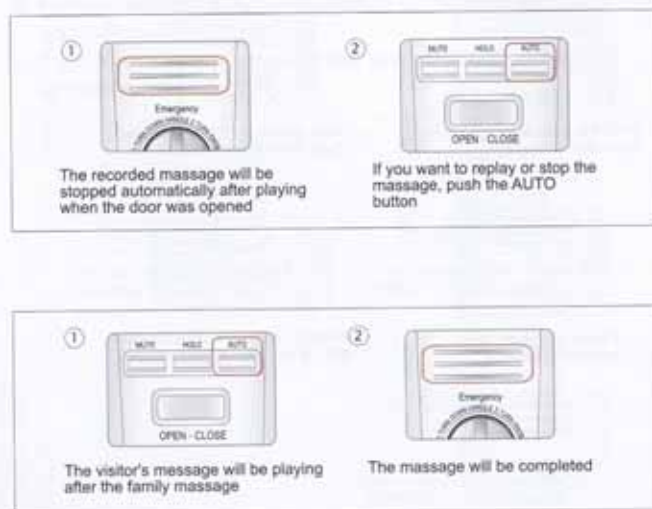
* Deletion of the message

1. Open the battery cover
2. Press the "DEL" button for 5 or more seconds until you hear "ding-dong" sound.
3. Voice notification "Records are deleted if you press "AUTO" button while they are playing." will follow.
4. All of voice and Door bell messages play automatically
5. Press the "AUTO" button when the message you want to delete plays.
6. Voice notification "Deleted." will follow.

8-3. Playback of messages

This shows how to listen to the messages left by family or visitors.

1. If there are any new messages left by the family members, they play and stop automatically to the first one opens the door and enters.
2. You can re-play or stop the messages with the "AUTO" button.

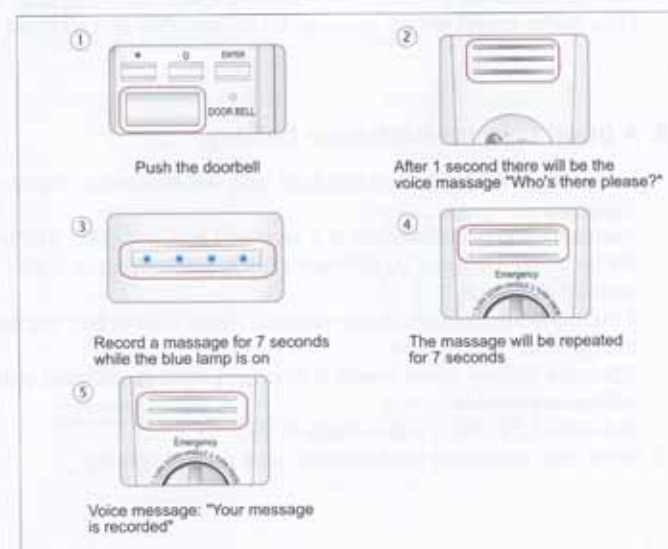


8-4. Recording and playback of a visitor's message

This is for visitors to leave messages. With this function you can check who has visited while you're out.

1. A visitor presses the door bell.
2. The Door bell message(ex. This is John & Mary's happy house. Who's there please?) will follow.
3. The visitor can record his message for 7 seconds while the blue lights on.
ex) It's a postman.
4. The recorded message plays automatically for 7 seconds.
5. Voice notification, "Your message is recorded." will follow.
6. If you're at home, it's possible to unlock the door with the "OPEN" button while the automatic playback.
7. In the case the door is not unlocked by anyone in the house, the chime bell rings two times repeatedly.

* It's a convenient function to screen soliciting merchants and unwelcomed visitors.



9 Alarm function in Irregular entry

9-1. Alarm function in Irregular entry

- ▶ When it will be comes to break a door lock or open the door lock by force, door lock make an alarm sound to notify Irregular entry.
- ▶ In the case leave space between doorframe and door, it will be operate alarm function even if it is closed by normal.



* If you want stop this alarm sound, you should try 3 methods see below .

1. Press "OPEN/CLOSE" button inside of the door and open the door
2. Input secret number and password correctly.
3. Pull out batterie from the door lock and insert it into the door lock.
(The alarm sound will be continue for 60 seconds and stopped)

9-2. A good time for exchange battery

The electronic functions of our door lock will be operate by normal batteries.

Generally, the batteries's life is 1 year and they will have a different life because it is used by different situation or how often it will operate door lock.

1. If the batteries remains a low voltage, voice notification "exchange the batteries" will follow.
2. Open the Battery cover inside of door and replace all used batteries with new batteries.
(A4 size/ 1.5V/ 6ea , total voltage is 9V)
3. When you exchange the batteries, take care of polarity.

10 Set up the level of voice certification

It is possible to set up the level of voice certification according to user's operating skill and its working situation.

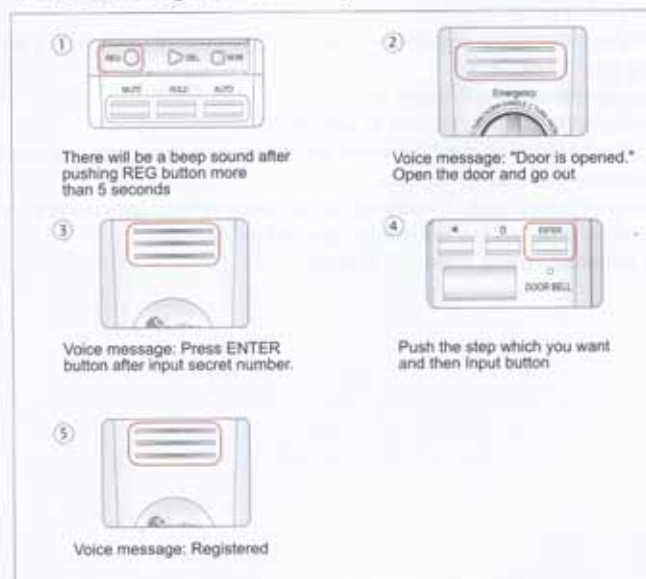
When it brings to market, the level of voice certification is a basic (ex.level 2) level.

It have 10 level voice certification(ex. level from 0 to 9).

If certification level rises, certification will be a complicated.

In the case certification level is high, its reponse will be sensitive.
(recommend level 0-5)

1. Open the battery cover.
Push "REG" button inside of the door for 5 seconds and more.
There will be a beep sound after 'Ding-Dong' sound.
2. There will a guide voice after the door opened "Press ENTER button after input secret number."
3. After that you Press a level step you want and push "ENTER" button.
ex) If you want to set up 3 level, press key number "3" and push "ENTER" button.
4. There will be guide voice. "Registered"



Digital(Voice Recognition) door lock installation guide

1. Remove the established door lock.
2. Set Mortise to the hole. Fix it straight and hard.
 - ▶ Right direction of a latch bolt is important.
3. Fold up the enclosed paper pattern according to the line and adhere it to a door
 - ▶ It will show you punch points when you drill them from the inside of a door.
4. Adjust a central hole of Mortise to a center of the paper pattern and mark punch points on it. After that, detach Mortise.
5. Punch Fix hole 1&2.
 - ▶ Make sure supports, cords and a key axis pass through the holes without a hitch.
6. Punch 8mm hole at the lower part.
7. Set Mortise lock fix pin to the left or right side of a knob.
8. bolt up the surface case and the back side iron board with 5mm bolt.
 - ▶ Check out a knob's working and the surface case's declination. (See Ref.1)
9. Cut off the central site key-linking board (It has grooves with every 5mm.), leaving only 12mm long.
 - ▶ Remove sharp parts if there're any.
10. Assemble all necessary cables in sequence.
11. Clear of excess cords pushing them into the inside of a door and bolt up the backside case with 4mm bolt.
12. Creaking of the surface & backside knobs means their axis don't fit. In that case, check out the installation procedure backward.
13. Insert batteries caring about +/- polarity.

Test Mortise Lock system.

* Check & Test below

- A. Mortise lock's appropriate operation by a OPEN/CLOSE button.
- B. the speaker sound and LED light by a chime-bell.
- C. whether mortise sensor reaches the center of a magnet pad when you closes the door.
- D. Change the given passwords with the customer family's own .
- E. Customer's own voice registration? referring the manual at possible quiet time.

* It should be installed while two arrow signs face each other.(-> <-)

* Ref1.

This product is suited for a 40mm thick door.
But you can adjust intervals of it to the other thick doors with a basic 8mm adapter, a supplementary 4mm adapter and 5EA bolts.

To adjust eccentricity in Motis holes(if there's any), use the enclosed adapters.

- Thank You !!! -

Caution

- Read Carefully before operating the device
- Record a voice 30cm from the microphone
- Practice entrance test 3-5 times after PID (Personal Identification) registratrion and voice recording
- These practices would increase its voice recognition capavility
- Do not dismantle the device and contact with water. It can cause a discharge of batter and malfunction
- Install the device where ventilates well and do not expose to heat
- Do not contact with chemical products such as alcohol or benzene
- Install the digital door lock where does not expose to rain or snow
- When replacing the batteries, be careful the polarity of (+) and (-)
Contact an authorized service center for moving service.
(There will be a service charge)
- How to supply power when batteries are discharged completely



The door can be opened by 9V battery purchased at the market in case of emergency. After connecting the battery, input password to open the door

- How to protect the password
 1. Change the password frequently
 2. Keep the emergency Key separately at your car or house
- How to use the emergency key if the digital function is not working
 1. Open the front emergency key cover
If it does not open easily, then apply strong power
 2. Insert the Key, and turn it to 180 while the hanle is turnde
The key has to be turned while the handle is turned
 3. If the key is turned with excessive power, the door will not open by overload

For Seller

Warranty

Product Name		Serial No.	
Agency Name		Agency Phone Number	
Date of Purchase		Period of warranty	
Customer Name		Customer Phone Number	

1. This product is manufactured with strict quality management and inspection.
2. If there is any problem, the service is free of charge for one year.
3. This is covered by the government law.

MEMO

For Customer

Warranty

Product Name		Serial No.	
Agency Name		Agency Phone Number	
Date of Purchase		Period of warranty	
Customer Name		Customer Phone Number	

1. This product is manufactured with strict quality management and inspection.
2. If there is any problem, the service is free of charge for one year.
3. This is covered by the government law.

MEMO



MEMO



MEMO



Note:

This equipment has been tested and found to comply with the limits for a class B digital device, pursuant to Part 15 of the FCC Rules.

These limits are designed to provide reasonable protection against harmful interference in a residential installation. This equipment generates, uses and can radiate radio frequency energy and if not installed and used in accordance with the instructions, may cause harmful interference to radio communications. However, there is no guarantee that interference will not occur in a particular installation. If this equipment does cause harmful interference to radio or television reception, which can be determined by turning the equipment off and on, the user is encouraged to try to correct the interference by one or more of the following measures:

- Reorient or relocate the receiving antenna
- Increase the separation between the equipment and receiver
- Connect the equipment into an outlet on a circuit different from that to which the receiver is connected
- Consult the dealer or an experienced radio/TV technician for help.

This device complies with Part 15 of the FCC Rules. Operation is subject to the following two conditions: (1) this device may not cause harmful interference, and (2) this device must accept any interference received, including interference that may cause undesired operation.

****CAUTION: Changes or modifications not expressly approved by the party responsible for compliance could void the user's authority to operate the equipment.**