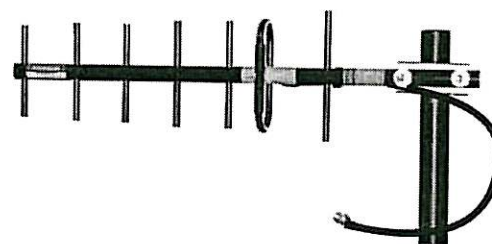


BLUEWAVE™**GUARDIAN™****BGY890K**
Previously BWM947Y-2**890-960 MHz****ANTENNA SPECIFICATIONS**

Bottom Operating Frequency (MHz VSWR \leq 1.5)	890
Top Operating Frequency (MHz VSWR \leq 1.5)	960
Nominal Gain (dBd, dBi > 1GHz)	10
Horizontal Beamwidth (Deg-3dB)	56
Vertical Beamwidth (Deg-3dB)	46
Front to Back Ratio (dB)	20
Power Rating (W)	200
Length (inches)	24
Width (inches)	6.8
Antenna Weight (lbs.)	2
Cross Sectional Area (Max. ft ²)	0.24
Lateral Thrust at 100mph (lbs.)	6
Rated Wind Velocity (mph)	125
Rated Wind Velocity with 1/2" Radial Ice (mph)	120



BGY890K Comes with 2' RG213U feed line with an N-type Female connector.



Includes mounting hardware
BWC1022

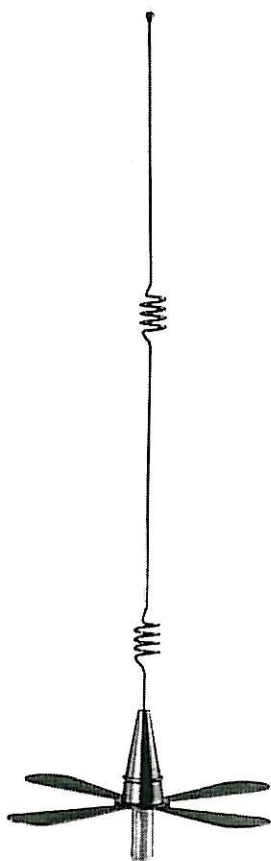
The BGY890K has been engineered to provide high gain broadband performance between the frequencies of 890-960 MHz. Solid 3/8" Aluminum elements complement the fully welded dipole on the boom. The black powder coat BGY890K comes with an integral low loss 2' RG213U feed line with a standard N-Female connector. High strength mounting clamp is supplied for vertical or horizontal polarization.

7015 - 8 Street N.E. CALGARY, AB CANADA T2E 8A2
PHONE: 403.291.4422 FAX: 403.219.3644
TOLL FREE: 1.888.334.9244
EMAIL: sales@bluewaveantenna.com

WWW.BLUEWAVEANTENNA.COM

© Bluewave Antenna Systems Ltd

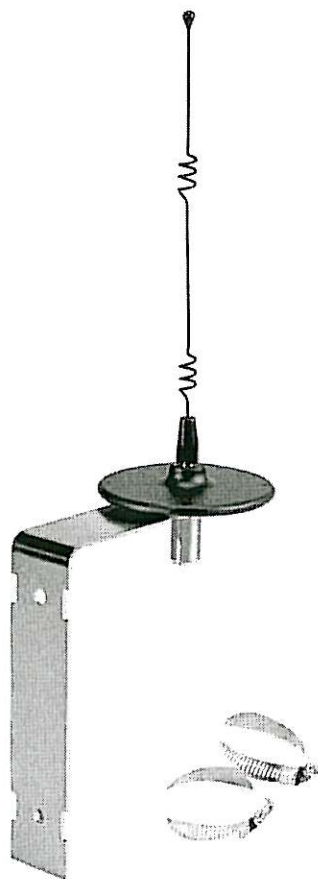
BASE STATION ANTENNAS



High gain omni base antenna with attached ground plane SMR, cellular or data applications. No mounting hardware.

MODEL	FREQUENCY
FB35T800WA	806 - 866 MHz
FB35T825WA	824 - 896 MHz
FB35T900WA	902 - 928 MHz

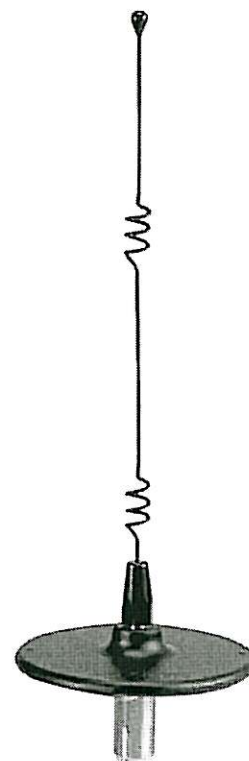
SPECIFICATIONS	
GAIN	5 dBd / 7.2 dBi
TYPE	5/8 over 5/8 over 1/4 wave
VSWR	1.5:1 or less (TX)
COLOR	Black
WHIP	.100, twin open coil
POWER RATING	150 Watts
MAX HEIGHT	32"
FEED CONNECTION	N Female
WIND LOAD	100 mph



High gain omni base antenna with attached ground plane, 2400 - 2485 MHz. Includes mounting bracket and hardware.

MODEL	FREQUENCY
FB45T2400	2400 - 2485 MHz

SPECIFICATIONS	
GAIN	5 dBd / 7.2 dBi
TYPE	5/8 over 5/8 over 1/4 wave
VSWR	1.5:1 or less
COLOR	Black
WHIP	.070, twin open coil
POWER RATING	100 Watts
MAX HEIGHT	15.6"
FEED CONNECTION	N Female
WIND LOAD	100 mph



High gain omni base antenna with attached ground plane, 2400 - 2485 MHz. No mounting hardware.

MODEL	FREQUENCY
FB45T2400WA	2400 - 2485 MHz

SPECIFICATIONS	
GAIN	5 dBd / 7.2 dBi
TYPE	5/8 over 5/8 over 1/4 wave
VSWR	1.5:1 or less
COLOR	Black
WHIP	.070, twin open coil
POWER RATING	100 Watts
MAX HEIGHT	9"
FEED CONNECTION	N Female
WIND LOAD	100 mph

RADIALL/LARSEN'S YAGI ANTENNAS

Radiall/Larsen Yagi directional antennas are designed with strengthened aluminum alloys to assure long life and best performance for the most demanding applications. Units are completely weatherized for continuous operation in the most extreme weather conditions. Solid aluminum elements provide superior signal radiation and broad bandwidth capabilities. Convenient "U" bolt mounting makes installation easy. All Radiall/Larsen Yagis come with the Radiall/Larsen Two Year No-Nonsense warranty.

Radiall/Larsen Yagis are available in the following configurations:

Welded Yagis:

Superior performance from fully welded construction. The ideal antenna for the most extreme environments.

YA3 "W"

- Frequencies from 406-470 MHz
- 5 elements
- 11 dBi gain

YA5 & 6 "W"

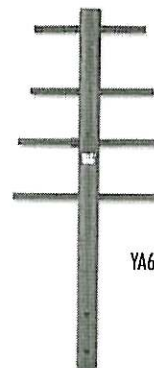
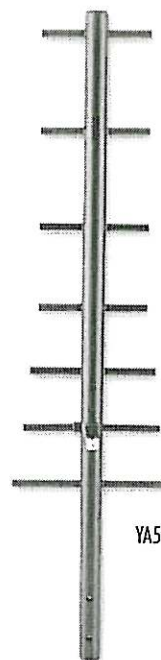
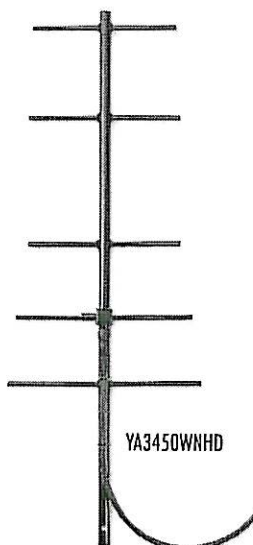
- Frequencies from 740-960 MHz
- 4 elements (YA6), 7 elements (YA5)
- 8 dBi and 11 dBi gain

Staked Yagis:

Radiall/Larsen's unique press fit and staking process provides the ultimate value in Yagi antennas. Solid 3/8" elements provide superior bandwidth.

YA3

- Frequencies from 220-225 and 406-470 MHz
- 3 elements and 5 elements
- 8 dBi and 11 dBi gain



Radiall/Larsen is pleased to introduce the newest addition to our Yagi antennas - the redesigned YA5 and YA6 SMR, cellular or data antennas. Available in a rugged fully welded design, the four-element unit delivers 8 dBi of gain and the seven-element delivers 11 dBi. Both units are built with a special N-Female connector that enables extra clearance for ease of weatherproofing.

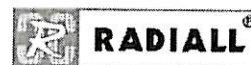
The YA3450WNHD features durable strengthened aluminum alloy construction, solid 3/8" welded elements, wider hole pattern spacing allowing heavier bracketry, and a pre-weatherized pigtail to provide superior performance in the most demanding conditions.

The YA3 line of Yagis consists of eight models covering 220 - 960 MHz, all with a maximum of 1.5:1 VSWR. No field tuning is required. The heavy-duty bracket and standard mounting configuration provides for both vertical and horizontal positioning on up to a 3" pipe.

RADIALL/LARSEN ANTENNA TECHNOLOGIES
3611 NE 112th Avenue Vancouver WA 98682
Tel: 800 ANTENNA Fax: 360 944-7556
www.radialllarsen.com
email: marketing@radialllarsen.com
europeanmarketing@radialllarsen.com

RADIALL/LARSEN
antenna technologies

D1 L 024 TE



Welded Yagis

MODEL	FREQUENCY	CONNECTOR
YA3406WN	406 - 430 MHz	N Female
YA3450WN	450 - 470 MHz	N Female
YA3470WN	470 - 490 MHz	N Female
YA3490WN	490 - 512 MHz	N Female
YA3406WPL	406 - 430 MHz	UHF Female
YA3450WPL	450 - 470 MHz	UHF Female

SPECIFICATIONS

GAIN	9 dBd / 11 dBi
TYPE	Five element welded
VSWR	1.5:1 maximum
POWER RATING	300 Watts
MAX LENGTH	42.25" - 406 MHz 36.25" - 450 MHz 35.25" - 470 MHz 34.25" - 490 MHz
VERTICAL BEAMWIDTH	53°
WIND LOAD	100 mph

MODEL	FREQUENCY	CONNECTOR
YA5740W	740 - 806 MHz	N Female
YA5800W	806 - 866 MHz	N Female
YA5825W	824 - 896 MHz	N Female
YA5900W	890 - 960 MHz	N Female

SPECIFICATIONS

GAIN	9 dBd / 11 dBi
TYPE	Seven element welded
VSWR	2.0:1 maximum
POWER RATING	300 watts
MAX LENGTH	32.75"
VERTICAL BEAMWIDTH	45°
WIND LOAD	100 mph

MODEL	FREQUENCY	CONNECTOR
YA6740W	740 - 806 MHz	N Female
YA6800W	806 - 866 MHz	N Female
YA6825W	824 - 896 MHz	N Female
YA6900W	890 - 960 MHz	N Female

SPECIFICATIONS

GAIN	6 dBd / 8 dBi
TYPE	Four element welded
VSWR	2.0:1 maximum
POWER RATING	300 watts
MAX LENGTH	17.5"
FEED CONNECTION	N Female
VERTICAL BEAMWIDTH	58°
WIND LOAD	100 mph

Staked Yagis

MODEL	FREQUENCY	CONNECTOR
YA3406N	406 - 430 MHz	N Female
YA3450N	450 - 470 MHz	N Female
YA3470N	470 - 490 MHz	N Female
YA3490N	490 - 512 MHz	N Female
YA3406PL	406 - 430 MHz	UHF Female
YA3450PL	450 - 470 MHz	UHF Female

SPECIFICATIONS

GAIN	9 dBd / 11 dBi
TYPE	Five element staked
VSWR	1.5:1 maximum
POWER RATING	300 watts
MAX LENGTH	42.25" - 406 MHz 35.25" - 470 MHz 34.25" - 490 MHz
VERTICAL BEAMWIDTH	53°
WIND LOAD	100 mph

RADIALL/LARSEN ANTENNA TECHNOLOGIES
 3611 NE 112th Avenue Vancouver WA 98682
 Tel: 800 ANTENNA Fax: 360 944-7556
www.radiallarsen.com
 email: marketing@radiallarsen.com
europeanmarketing@radiallarsen.com

DS-YAGI
 REV 08/05

RADIALL/LARSEN
 antenna technologies

D1 L 024 TE

