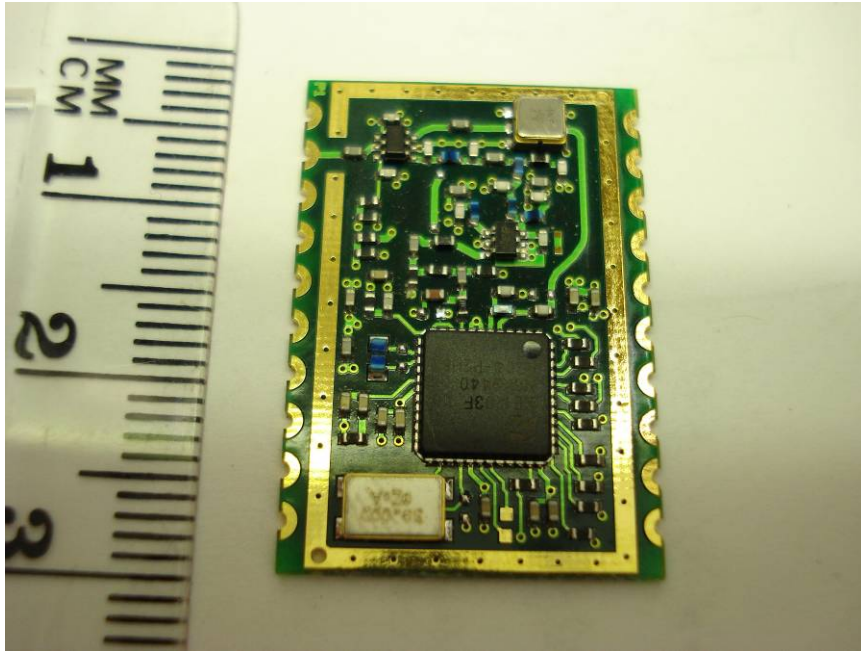




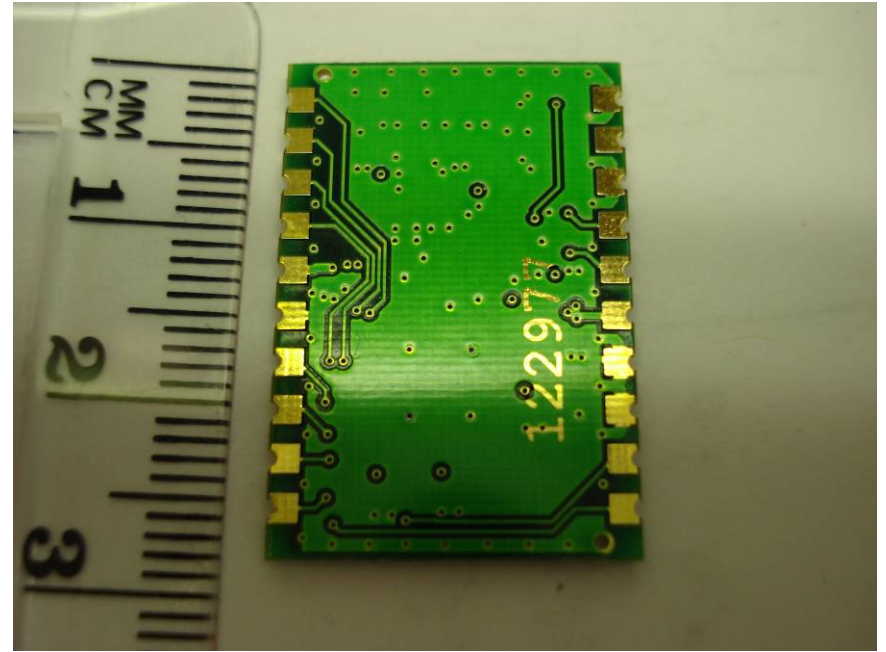
FCC ID# T6UDX80
This device complies with
FCC Rules Part 15.



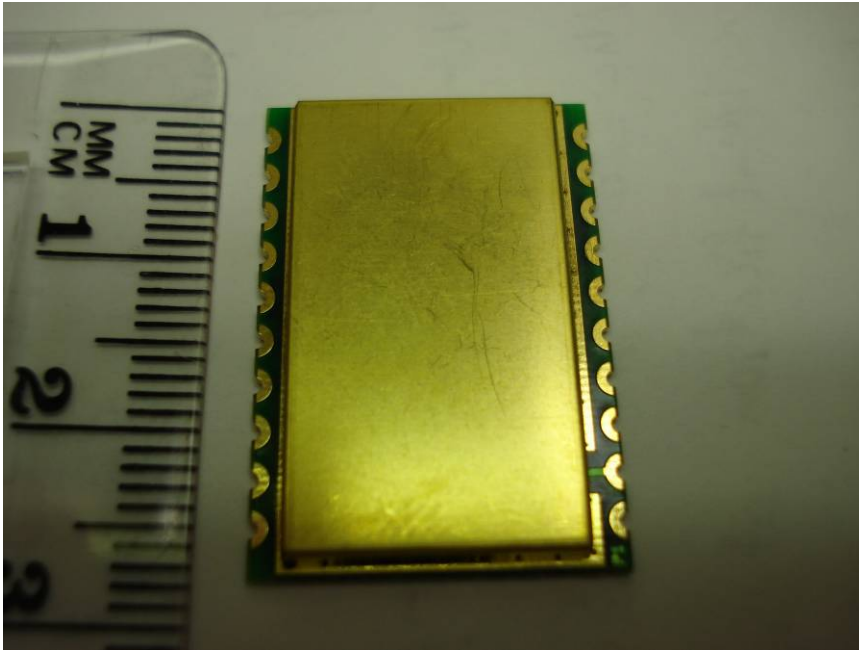
Populated circuit board, TGUDX80
Limited modular approval applies to this
assembly ONLY.

- Design has not changed since 2005.
- Board includes all radio components.
- The only reason it does not qualify for a full Modular Approval is it lacks its own voltage regulator.
- Voltage regulation is accomplished on the larger carrier board and has been carefully preserved across all revisions.

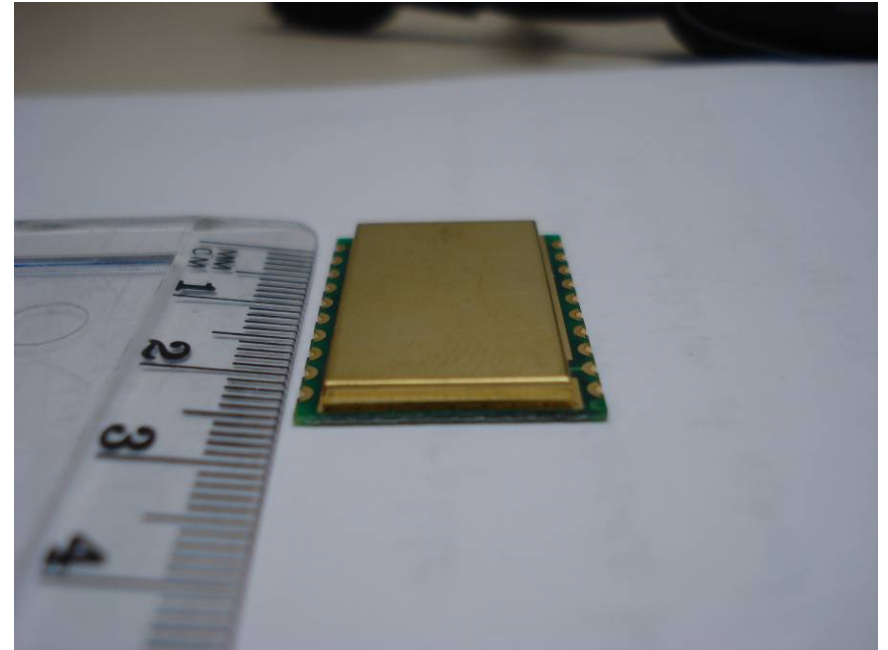
Brent Holm 763-519-7008
Jan 14, 2009.



TGUDX80 board, back side.



TGUDX80 board, shown with shield.



TGUDX80 board, shown with shield, side profile (There is no difference in the back side of the board whether the shield is installed or not.)