

# Wireless Gaming Adapter Manual

You must have at least the following equipment before you begin setup:

- A Wireless Access Point (AP) or wireless Router (with Broadband Internet Connection)
- A Computer with an Ethernet Adapter and CD-ROM drive
- An Ethernet Cable (included)
- A CD-ROM (with Manual and quick installation guide)

## 1. Hardware installation:

**1-1** Connect one end of power adapter to power port on Wireless Gaming Adapter and connect the other end into an available electrical outlet. Once connected, push Adapter's power button to turn Adapter ON.

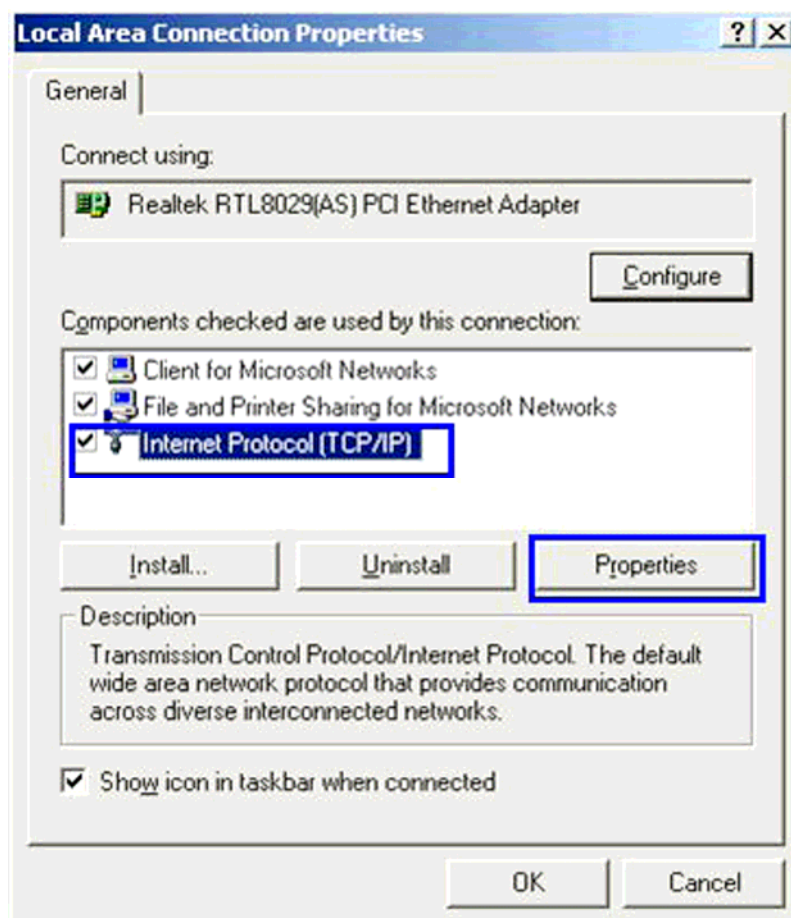
**1-2** Connect Ethernet cable between computer and Gaming Adapter's Ethernet port.

## 2. Software installation:

### 2-1 IP address setting

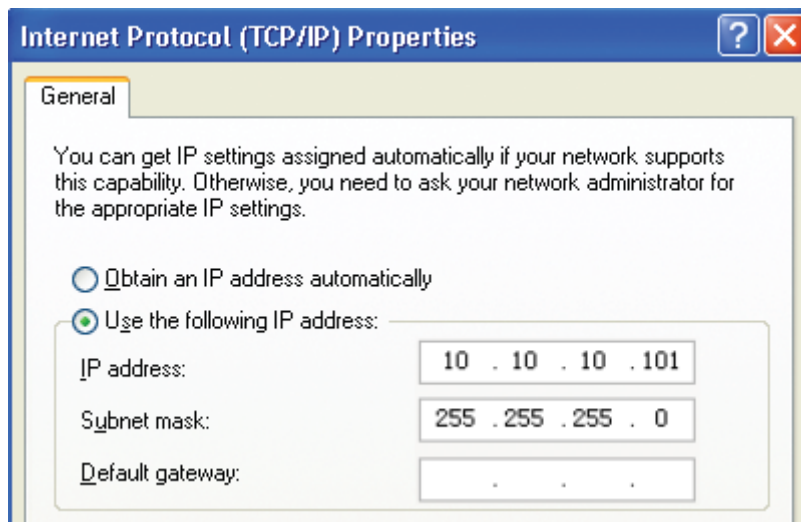
You must assign your computer a static IP address within the same range as the IP address of the Gaming Adapter. The Gaming Adapter's default IP address is **10.10.10.254** with a Subnet mask of **255.255.255.0**. Please see the detailed information below:

**2-1-1** Click the Start button (it should be located at the lower-left corner of your monitor), then click **Control Panel**. Double-click **Network Connections**, then double-click **Local Area Connection**, Local Area Connection Status window will appear, and then click "**Properties**"



**2-1-2** Set the IP address of your Ethernet adapter to a specific IP address.

In the **IP address** field, enter the address **10.10.10.x**(x should be replaced by a number between 2 and 253,such as 101). In the **Subnet mask** field, enter **255.255.255.0**.



**NOTE:** If numbers are already present in the IP address, Subnet Mask and/or Default gateway fields, be sure to write them down as you will need to re-enter them so your PC can access the Internet once WGA configuration is complete.

## 2-2 Gaming Adapter setting

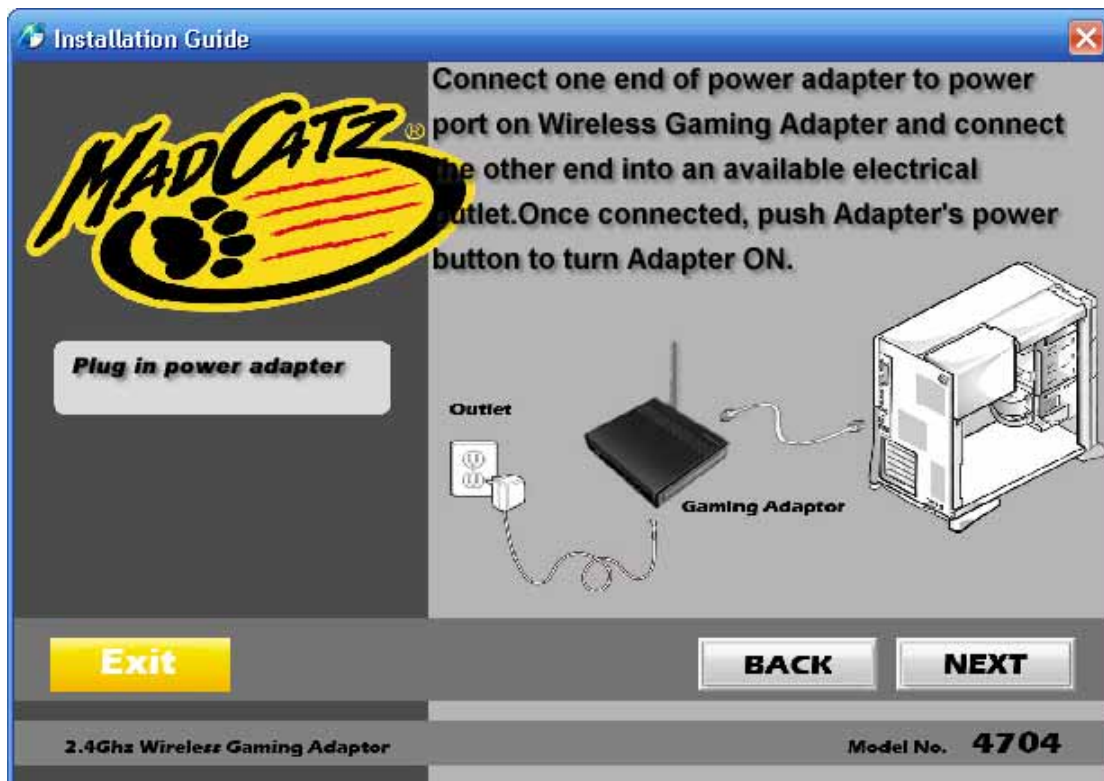
You have two ways to connect the Gaming Adapter to your WAP/Router:

- (1). If you have WiFi Protected Setup (WPS) feature on your router, you can use it to connect your Gaming Adapter to your network easily and automatically.
- (2). If you don't have the WPS feature on your router, or you would like to setup your wireless settings manually, you may login to the Gaming Adapter's web-based utility through your web browser to do so.

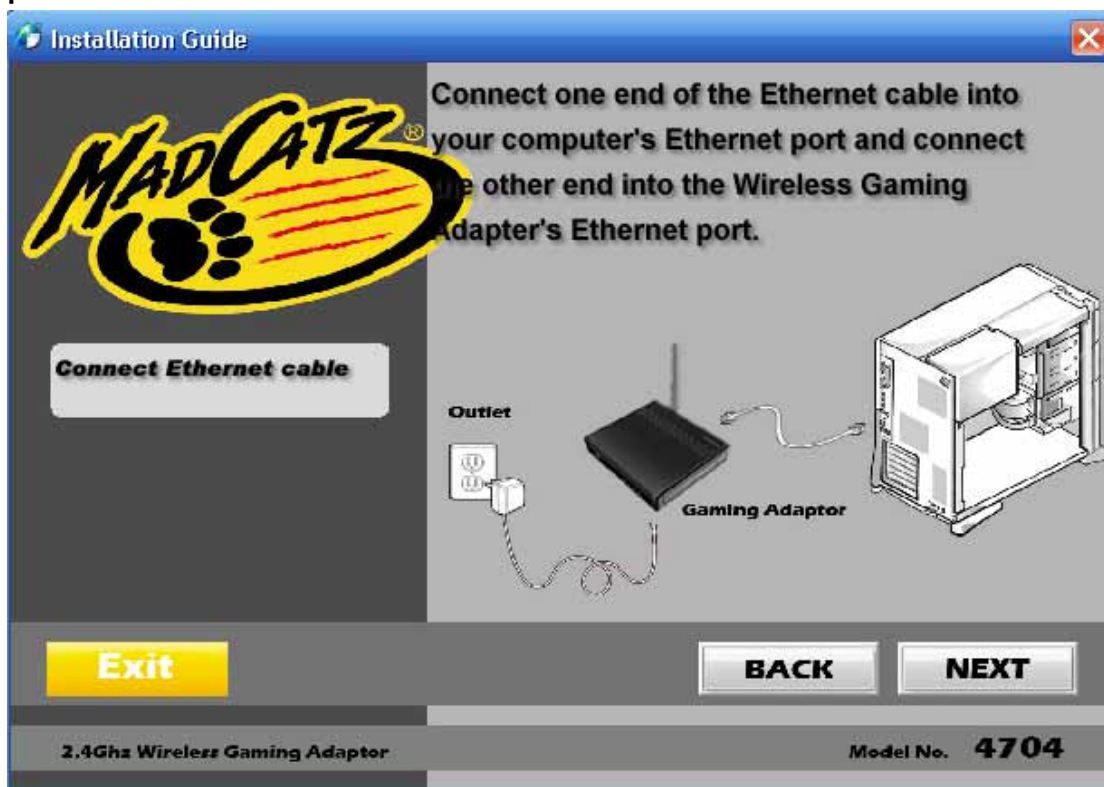
2-2-1 Put the setup CD into your computer, the auto-run interface will appear as pictured below:



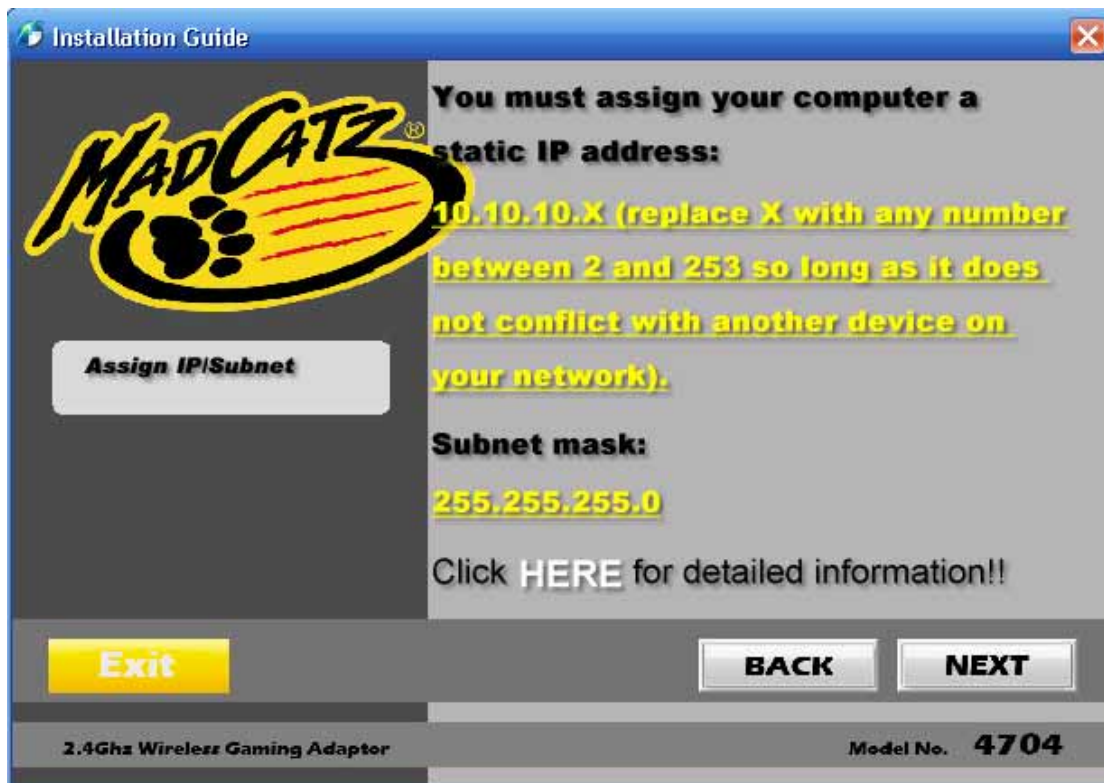
2-2-2 Click 'Start,' you will be prompted to plug in the power adapter as pictured below:



Click 'NEXT,' you will be prompted to connect the included Ethernet cable as pictured below:



Click 'NEXT,' you will be prompted to assign a static IP address to your computer as pictured below:"



Click 'NEXT,' you will be prompted to check the Wireless Gaming Adapter's LED status as outlined below:



Click NEXT to view the two ways you can connect your Wireless Gaming Adapter to a wireless AP/Router as outlined below:





2-2-3 Connect the Wireless Gaming Adapter to a wireless AP/Router.

2-2-3-1 Wi-Fi Protected Setup (WPS) method

Click the WPS button to use the WPS method.

There are two WPS methods for connecting the Wireless Gaming Adapter to a wireless AP/Router as outlined below:



2-2-3-1-1 Push Button (Recommended)

A. Press the WPS button on your wireless AP/Router:



B. Within 2 minutes of pressing the WPS button on your wireless AP/Router, press and release the Wireless Gaming Adapter's WPS button as pictured below:



2-2-3-1-2 PIN Number

Select PIN Number, then follow the instructions outlined below:

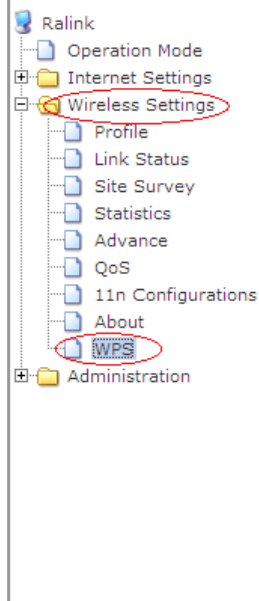


Obtain your Wiress Gaming Adapter's PIN number from the web-based utility as outlined below:

[open all](#) | [close all](#)

### Wi-Fi Protected Setup (STA)

You could setup security easily by choosing PIN or PBC method to do Wi-Fi Protected Setup.



WPS AP site survey								
No.	SSID	BSSID	RSSI	Ch.	Auth.	Encrypt	Ver.	Status

Refresh
Mode: Enrollee ☒ PIN: 26544243
PIN Start
PBC Start
Cancel

Renew PIN

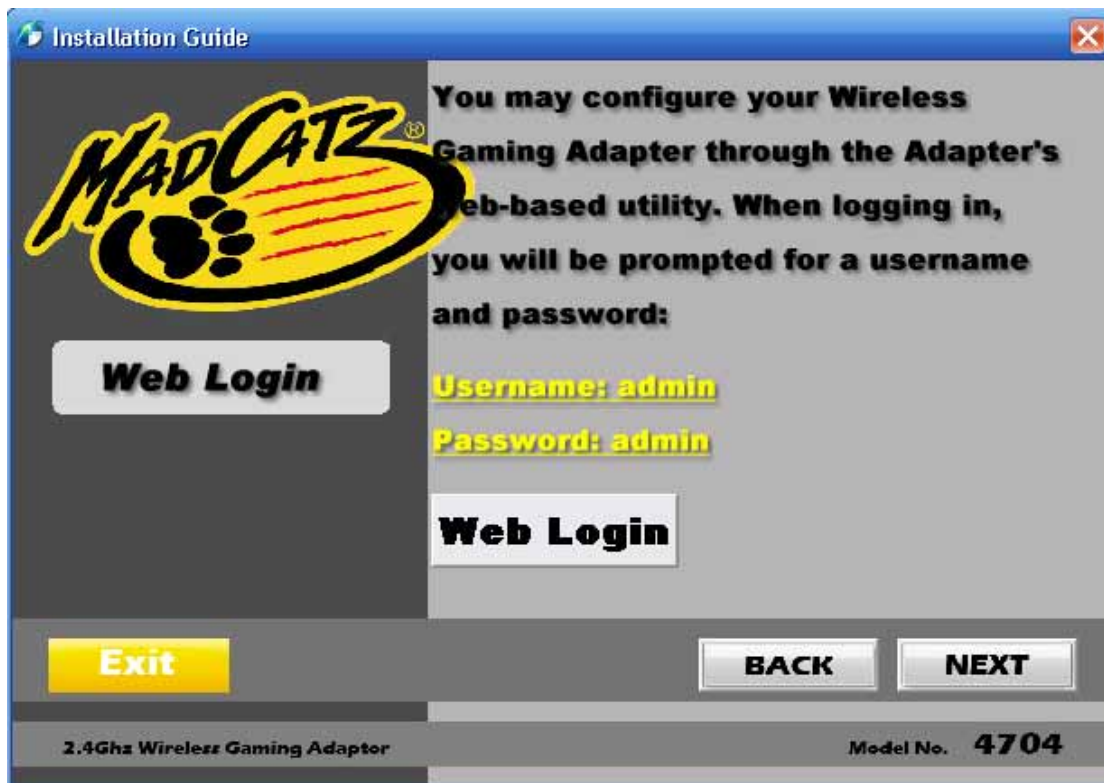
#### WPS Status

Not used

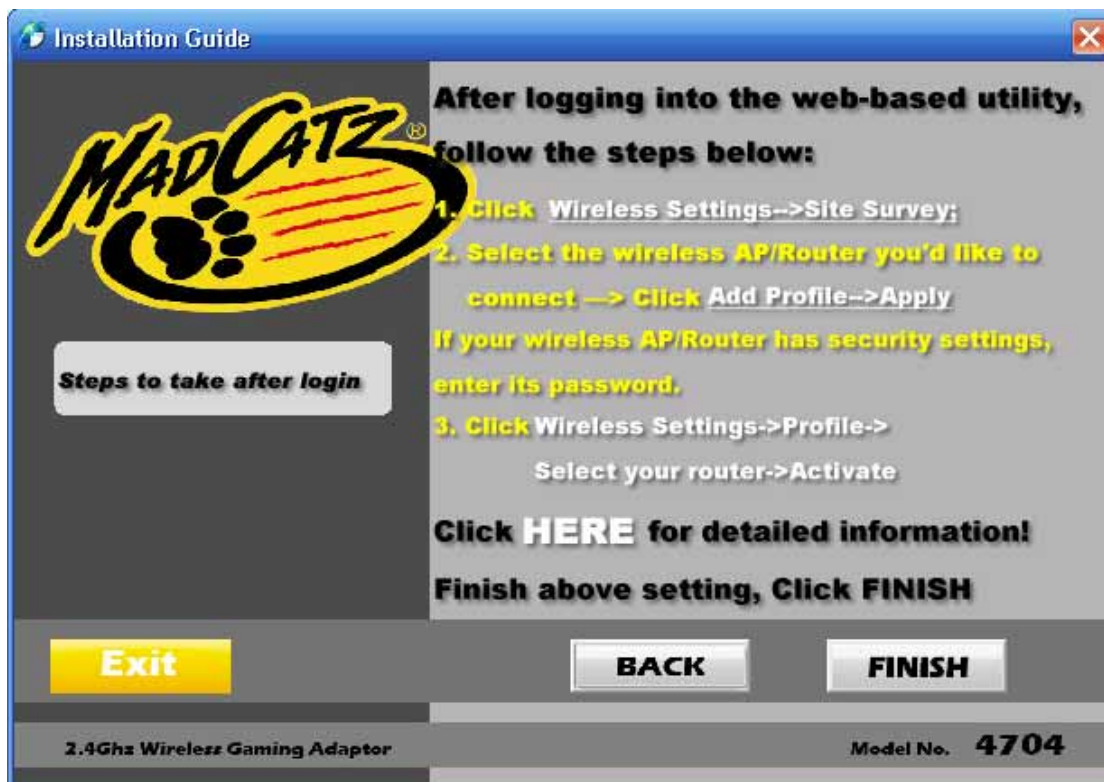
### 2-2-3-2 Web Setup

To perform the Web Setup connection method, click the 'Web Setup' button. You will then be prompted for a username and password, both of which are: admin



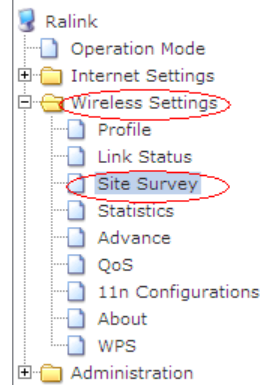


After entering the Username and Password, click 'NEXT' and follow the instructions below:





[open all](#) | [close all](#)



## Station Site Survey

Site survey page shows information of APs nearby. You may choose one of these APs connecting or adding it to profile.

Site Survey							
	SSID	BSSID	RSSI	Channel	Encryption	Authentication	Network Type
<input checked="" type="checkbox"/>	WR3050	00-0C-43-30-50-48	20%	5	Not Use	OPEN	Infrastructure
Connected <--> WR3050				Connect	Rescan	Add Profile	

SSID	<input type="text" value="WR3050"/>
Network Type	<input type="text" value="Infrastructure"/>
Power Saving Mode	<input checked="" type="radio"/> CAM (Constantly Awake Mode) <input type="radio"/> Power Saving Mode
RTS Threshold	<input type="checkbox"/> Used <input type="text" value="2347"/>
Fragment Threshold	<input type="checkbox"/> Used <input type="text" value="2346"/>

Security Policy	
Security Mode	<input type="text" value="OPEN"/>

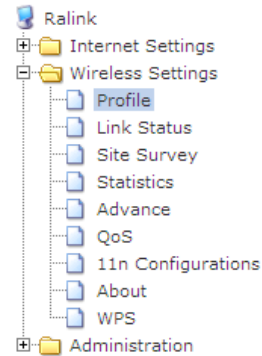
Wire Equivalence Protection (WEP)	
WEP Key Length	<input type="text" value="64 bit (10 hex digits / 5 ascii keys)"/>
WEP Key Entry Method	<input type="text" value="Hexadecimal"/>
WEP Keys	WEP Key 1 : <input type="text"/>
	WEP Key 2 : <input type="text"/>
	WEP Key 3 : <input type="text"/>
	WEP Key 4 : <input type="text"/>
Default Key	<input type="text" value="Key 1"/>

<input type="button" value="Apply"/>	<input type="button" value="Cancel"/>
--------------------------------------	---------------------------------------

[open all](#) | [close all](#)

## Station Profile

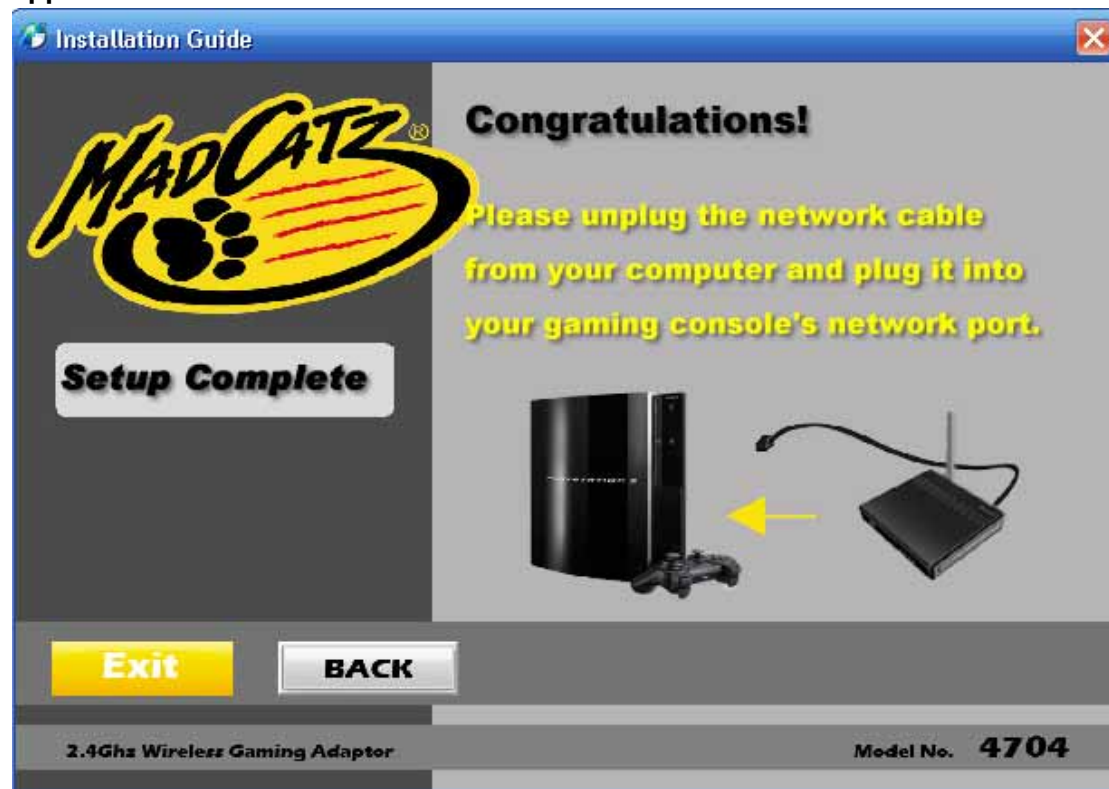
The Status page shows the settings and current operation status of the Station.



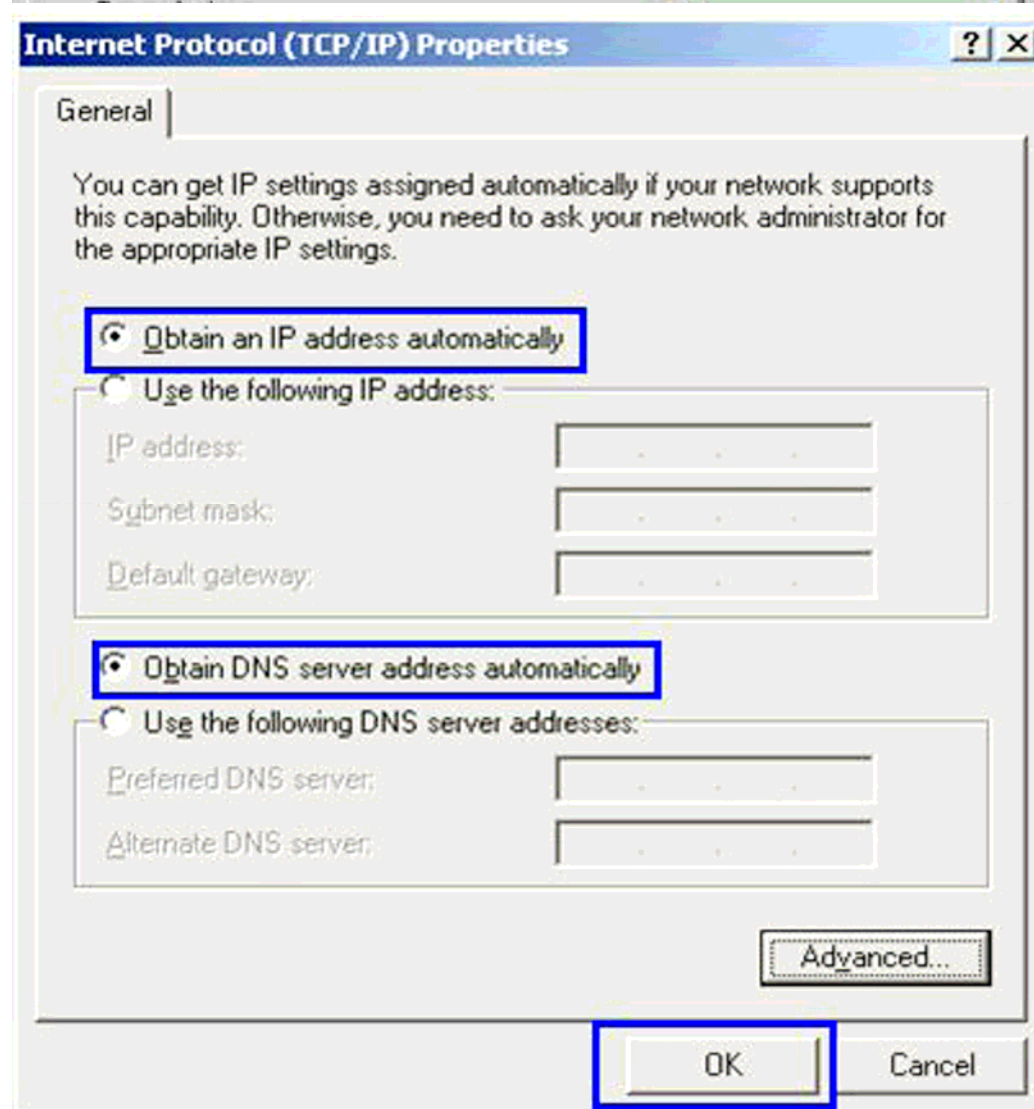
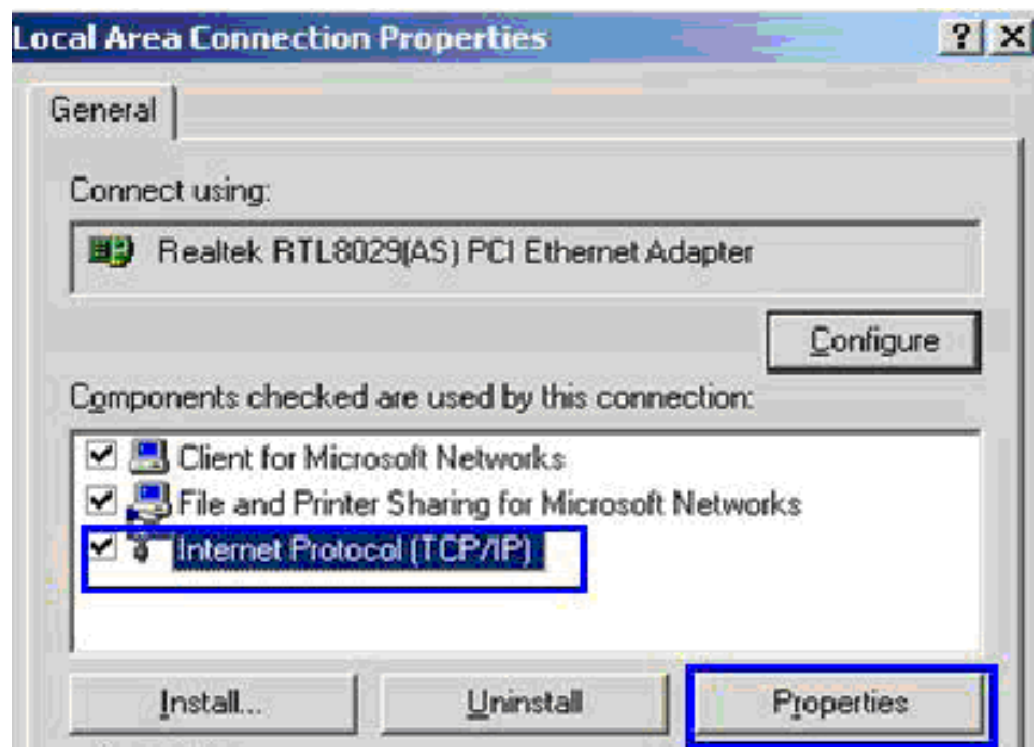
Profile List						
	Profile	SSID	Channel	Authentication	Encryption	Network Type
<input type="radio"/>	PROF001	WR3050	Auto	OPEN	NONE	Infrastructure
<input checked="" type="radio"/>	PROF002	RTL8186-GW	Auto	OPEN	NONE	Infrastructure
<input type="radio"/>	PROF001	QA	Auto	OPEN	NONE	Infrastructure

AddDeleteEditActivate

The Wireless Gaming Adapter should now be successfully connected to a wireless AP/Router. The next step is to connect the Wireless Gaming Adapter to your gaming console. Once 'FINISH' is clicked, the Congratulations! window will appear as shown below:



**OPTIONAL:** If you want to use the Wireless Gaming Adapter to connect to a wireless AP/ Router for a computer's Internet connection, you must set that computer's Ethernet adapter to 'Obtain an IP address automatically.' Follow the steps outlined below to complete this task:



Changes or modifications not expressly approved by the party responsible for compliance could void the user's authority to operate the equipment.

This equipment has been tested and found to comply with the limits for a Class B digital device, pursuant to Part 15 of the FCC Rules. These limits are designed to provide reasonable protection against harmful interference in a residential installation. This equipment generates uses and can radiate radio frequency energy and, if not installed and used in accordance with the instructions, may cause harmful interference to radio communications. However, there is no guarantee that interference will not occur in a particular installation. If this equipment does cause harmful interference to radio or television reception, which can be determined by turning the equipment off and on, the user is encouraged to try to correct the interference by one or more of the following measures:

- Reorient or relocate the receiving antenna.
- Increase the separation between the equipment and receiver.
- Connect the equipment into an outlet on a circuit different from that to which the receiver is connected.
- Consult the dealer or an experienced radio/TV technician for help

FCC Radiation Exposure Statement The antennas used for this transmitter must be installed to provide a separation distance of at least 20 cm from all persons and must not be collocated or operating in conjunction with any other antenna or transmitter.