



Beverage Tracker

Desktop Software User Guide

www.captioninc.com

Section Number/Title/Page Number

1	SYSTEM COMPATIBILITY AND SETUP OUTLINE	Page 3
2	INSTALLATION - DETAILED INSTRUCTIONS	Page 4
2.1	INSTALL BEVERAGE TRACKER SOFTWARE	Page 4
2.2	UPGRADING PREVIOUS VERSIONS OF BEVERAGE TRACKER	Page 5
2.3	STARTING BEVERAGE TRACKER	Page 6
2.4	HARDWARE SETUP	Page 6
3	LOGIN AND LOGOUT	Page 7
4	NAVIGATION	Page 8
4.1	MAIN MENU NAVIGATION	Page 8
4.2	FILE MENU NAVIGATION	Page 9
5	CHANGE USERNAME AND PASSWORD	Page 10
6	SETUP BEVERAGE TRACKER SOFTWARE	Page 11
6.1	LIQUOR LIBRARY SETUP	Page 11
6.1.1	Add Liquor to Library	Page 11
6.1.2	Delete Liquors from Library	Page 11
6.1.3	Edit Existing Liquors	Page 12
6.1.4	Save Liquor Library Changes	Page 12
6.2	STATION ASSIGNMENT	Page 12
6.2.1	Add Station	Page 12
6.2.2	Delete Station	Page 12
6.2.3	Edit Existing Station	Page 13
6.2.4	Save Station Changes	Page 13
6.3	SPOUT ASSIGNMENT	Page 13
6.3.1	Add Spout	Page 13
6.3.2	Delete Spout	Page 14
6.3.3	Edit Existing Spout	Page 14
6.3.4	Save Spout Changes	Page 14
7	BEVERAGE TRACKER REPORTS	Page 15
7.1	RUN REPORT	Page 15
7.2	PRINT, EXPORT AND SAVE REPORT	Page 15
7.2.1	Print	Page 16
7.2.2	Export	Page 16
7.2.3	Save	Page 16
8	REPORT TYPES	Page 17
8.1	POUR COST REPORT	Page 17
8.2	POUR COST CHART	Page 18
8.3	CONSUMPTION REPORT	Page 19
8.4	POURS BY STATION REPORT	Page 20
8.5	POURS BY STATION CHART	Page 21
8.6	ENGAGE AND POUR REPORT	Page 22
8.7	POUR LOG	Page 23
8.8	BRAND POUR SUMMARY	Page 24
8.9	THEORETICAL SALES REPORT	Page 25
8.10	THEORETICAL SALES CHART	Page 26
8.11	SETUP SUMMARY REPORT	Page 27
8.12	SPOUT BATTERY LEVEL REPORT	Page 28
	APPENDIX A - SOFTWARE AND COMPUTER SYSTEM COMPATIBILITY	Page 29
8.13	MINIMUM HARDWARE REQUIREMENTS	Page 29
8.14	OPERATING SYSTEMS	Page 29
	APPENDIX B - EXPORT FORMATS FOR BEVERAGE TRACKER REPORTS	Page 30

THANK YOU FOR CHOOSING CAPTON BEVERAGE TRACKER 3.0!

CAPTON's Beverage Tracker is a wireless "free-pour" management system that measures liquor quantity as it is being poured. Pour quantities are instantly transmitted from the spout to your computer through a radio frequency. You can view all your real-time data by volume, by brand, by shelf type and by station for your location.

The following guide provides all the steps and details for installing and configuring your Beverage Tracker software. Please consult the Beverage Tracker Hardware Installation Guide for instructions on how to install the Beverage Tracker receiver, spouts and connect the system to your computer. Once installed Beverage Tracker will allow you to manage your liquor operations more efficiently and effectively. It's a whole new way of doing business. To learn more about the other products and services CAPTON offers to help you manage your business more efficiently, please visit our web site at www.captoninc.com.

EQUIPMENT USE WARNING – FCC NOTICE

Electronic pour spouts used in a Beverage Tracker system have been approved for specific use with this desktop software.

Changes or modifications to this device not expressly approved by the manufacturer could void the user's authority to operate the equipment.

This device complies with Part 15 of the FCC rules subject to the following two conditions:

- 1) This device may not cause harmful interference.
- 2) This device must accept all interference received, including interference that may cause undesired operation.

1 SYSTEM COMPATIBILITY AND SETUP OUTLINE

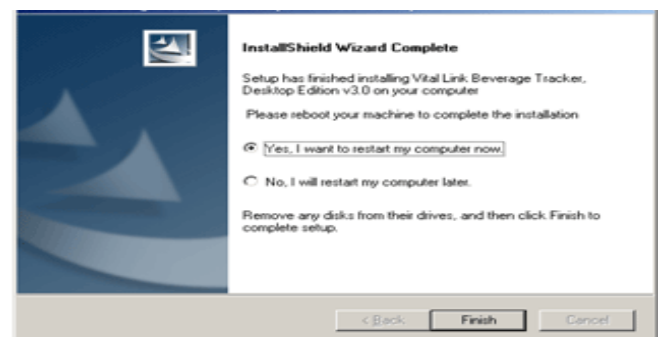
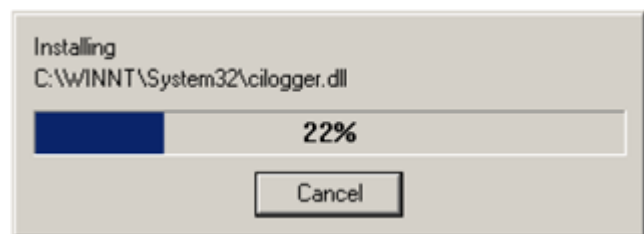
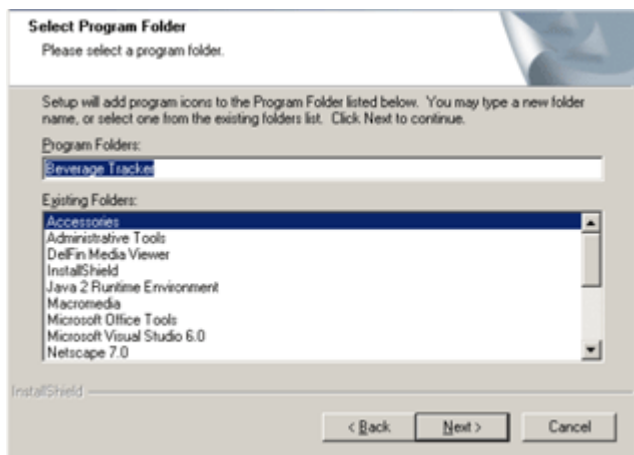
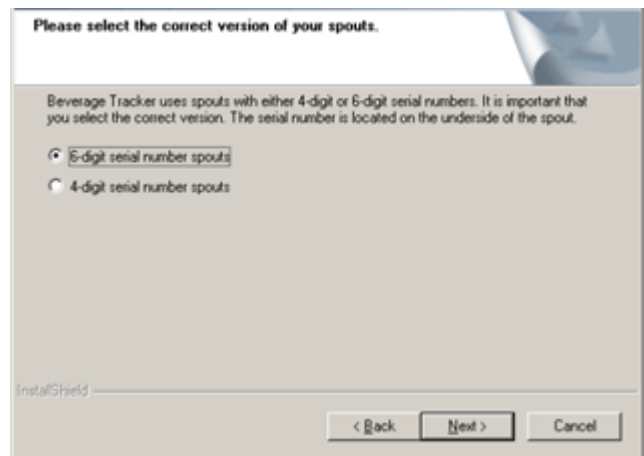
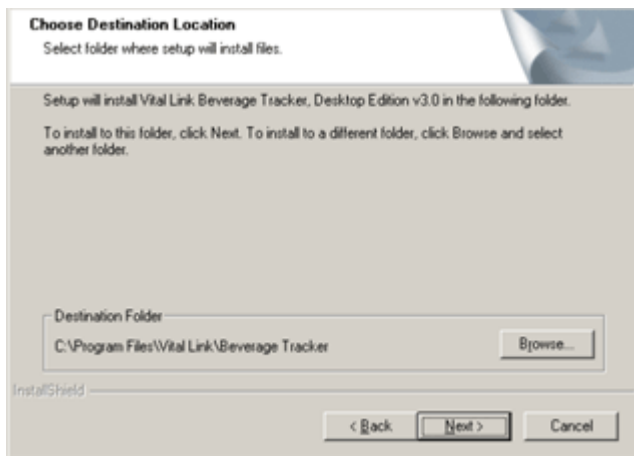
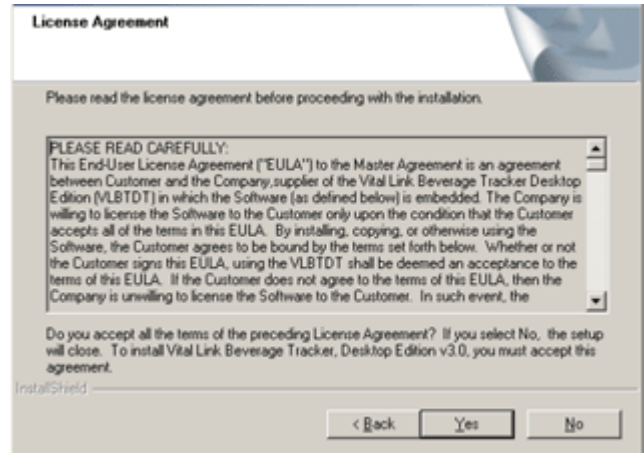
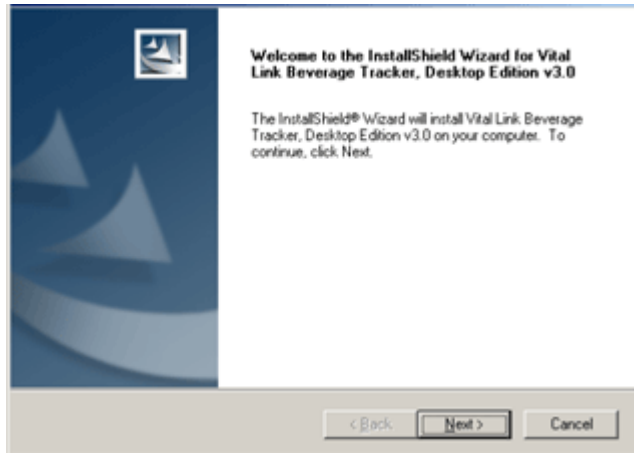
Prior to installation, make sure you are installing the Beverage Tracker software on a compatible computer system. A complete list of compatible computer systems is available in Appendix A of this document. Setting up your Beverage Tracker system is quick and easy. When you are ready to install Beverage Tracker follow the 5 basic steps below to setup the product correctly:

1. Install the Beverage Tracker Software
2. Setup the Spout and Receiver Hardware
3. Setup the Liquor Library in Beverage Tracker
4. Setup you stations via Station Assignment in Beverage Tracker
5. Assign spouts to stations via Spout Assignment in Beverage Tracker

2 INSTALLATION - DETAILED INSTRUCTIONS

2.1 INSTALL BEVERAGE TRACKER SOFTWARE

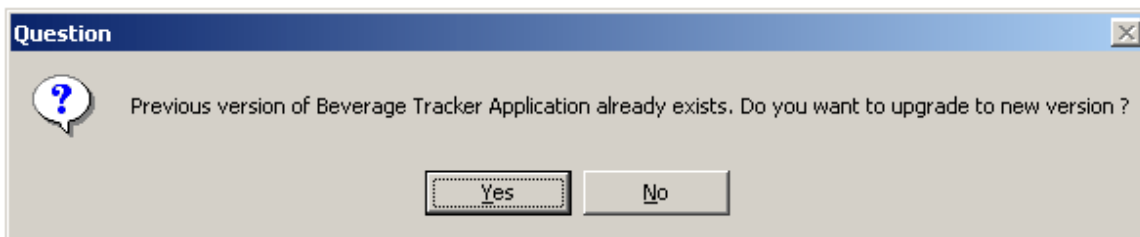
To install Beverage Tracker on your computer, insert the Beverage Tracker Install CD. The install program should auto-start. Follow the instructions on the screens shown below (left-to-right, top-to-bottom):



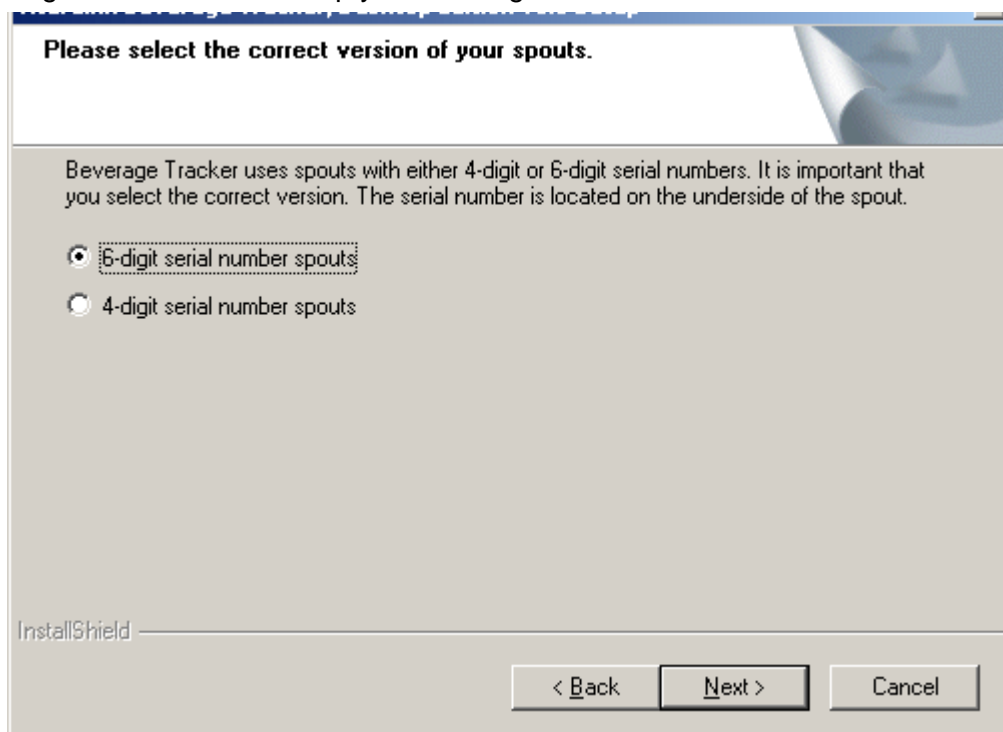
If the program does not automatically start the installation process when the CD is inserted, access your computer drive that contains the CD-ROM and find the file that is titled "setup.exe". Double click the icon to initialize the setup process. Follow the above installation instructions.

2.2 UPGRADING FROM PREVIOUS VERSIONS OF BEVERAGE TRACKER

If you are already a Beverage Tracker user and are installing v3.0 on top of an existing version, then you will see the following screen before starting the installation process. Answer Yes if you want to install Beverage Tracker 3.0 and keep your existing data. Answer No if you wish to exit the installation.

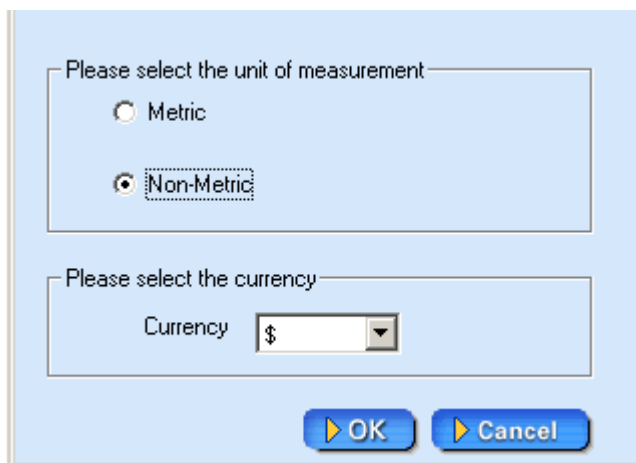


If you decide to continue with the installation, you must select the version of spout that you will be using. Previous versions of Beverage Tracker worked only with 4-digit spouts. Beverage Tracker 3.0 will work with either 4-digit or 6-digit spouts, but not both at the same time. No matter which version of spouts you choose during an upgrade, Beverage Tracker 3.0 will keep your existing data intact.



2.3 STARTING BEVERAGE TRACKER

After you restart your computer there will be a Beverage Tracker icon on your desktop. Click on the icon to launch Beverage Tracker. The first time you run the program, you must designate the unit of measurement and currency to be used. Available currencies include Dollar, Rand, Pound, Yen, Euro and many others.



If you would like to change the unit of measurement and the currency used once you have started using Beverage Tracker, select Options, then Preferences from the menu at the top left corner of every page.

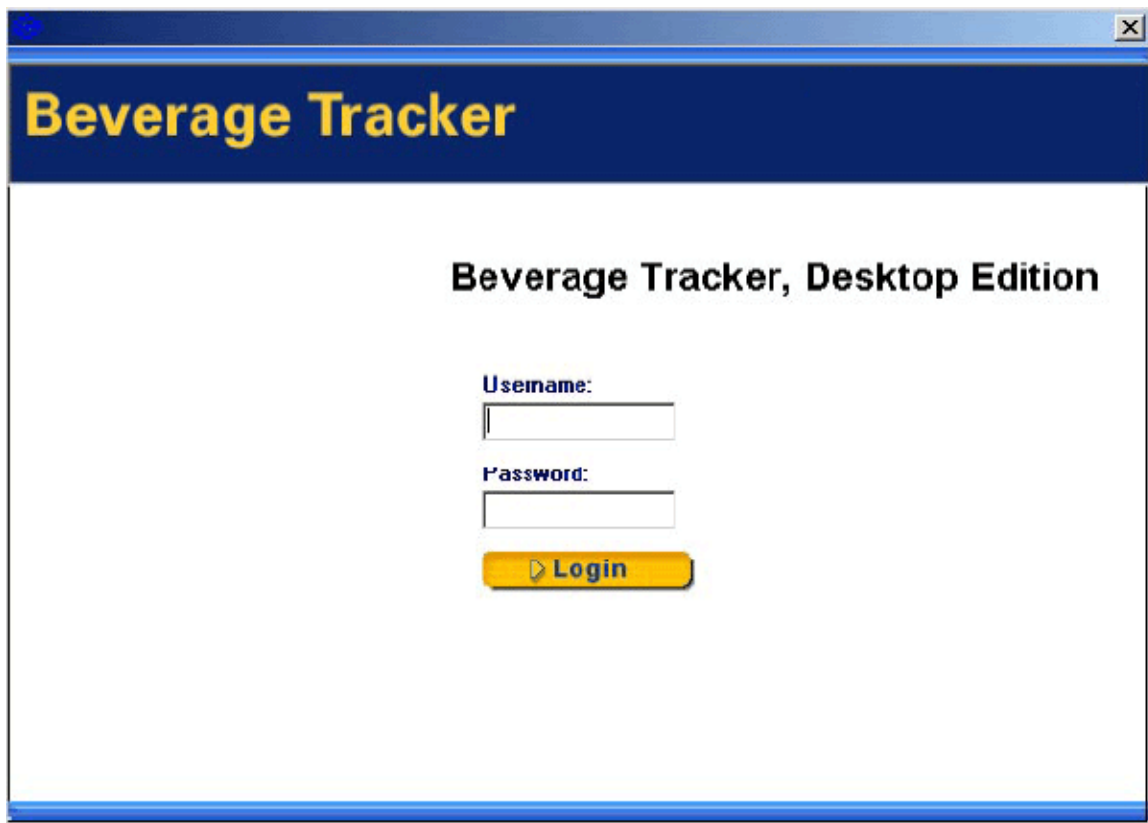


2.4 HARDWARE SETUP

To setup your Beverage Tracker hardware, please refer to a separate document entitled, Beverage Tracker "Hardware Installation Guide".

3 LOGIN AND LOGOUT

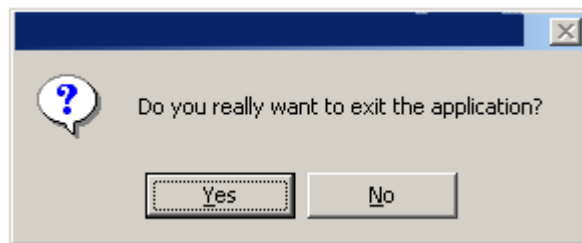
Once you launch Beverage Tracker, the Login screen (below) will appear. Enter your username and password and click the Login button. **The first time you use Beverage Tracker use “admin” as the username and “admin” as the password.** Once you log in you may change this login information. Once you are in Beverage Tracker you may logout by clicking on the Logout button located on the Beverage Tracker Main Menu. You may also click on the “X” button in the top right corner of the application to exit. A dialog box like the one below will appear. Click yes to exit Beverage Tracker.



Once you are in Beverage Tracker you may logout by clicking on the Logout button located on the Beverage Tracker Main Menu.



You may also click on the “X” button in the top right corner of the application to exit. A dialog box like the one below will appear. Click yes to exit Beverage Tracker.

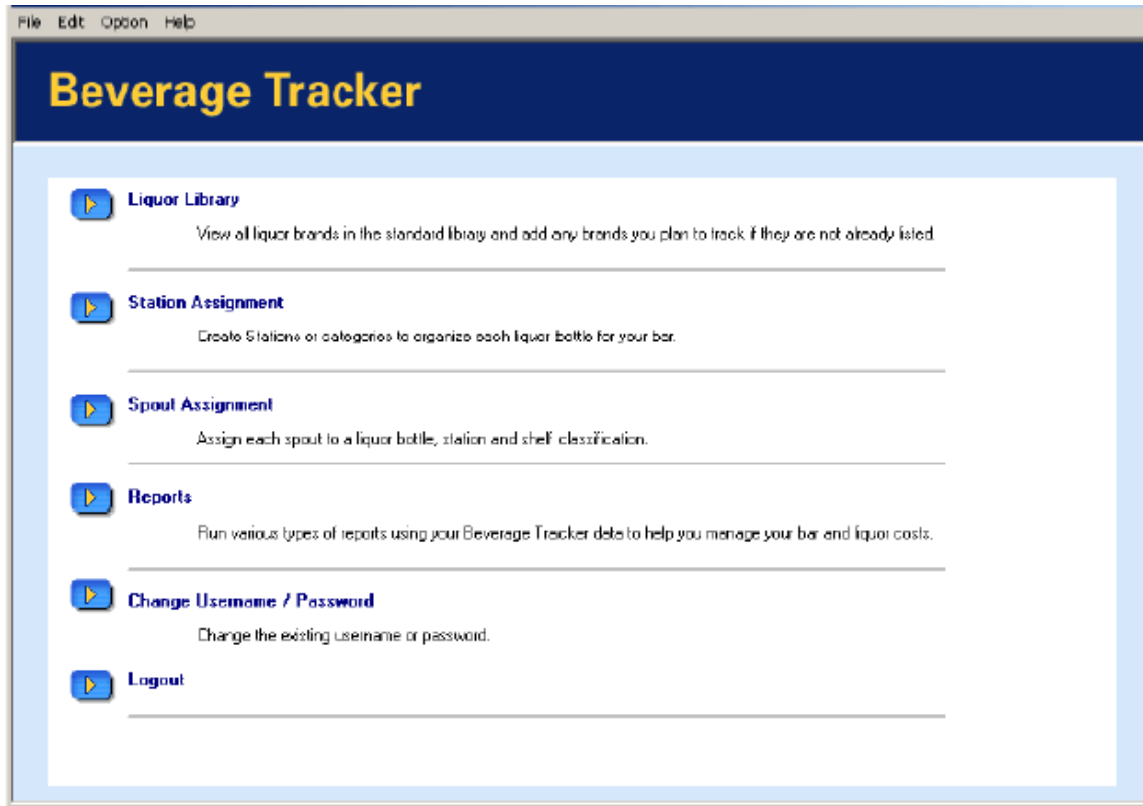


4 NAVIGATION

There are two different methods of navigating through Beverage Tracker, main menu navigation and file menu navigation.

4.1 MAIN MENU NAVIGATION

The Beverage Tracker Main Menu is shown below. It contains links to all of the major sections in Beverage Tracker.

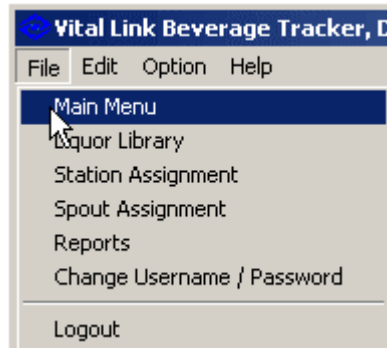


Once you click through to one of the sections of Beverage Tracker, you can always return to this page by clicking on one of the links in the Navigation Path, an example of which is below:

[Beverage Tracker Main Menu ->](#) [Liquor Library](#)

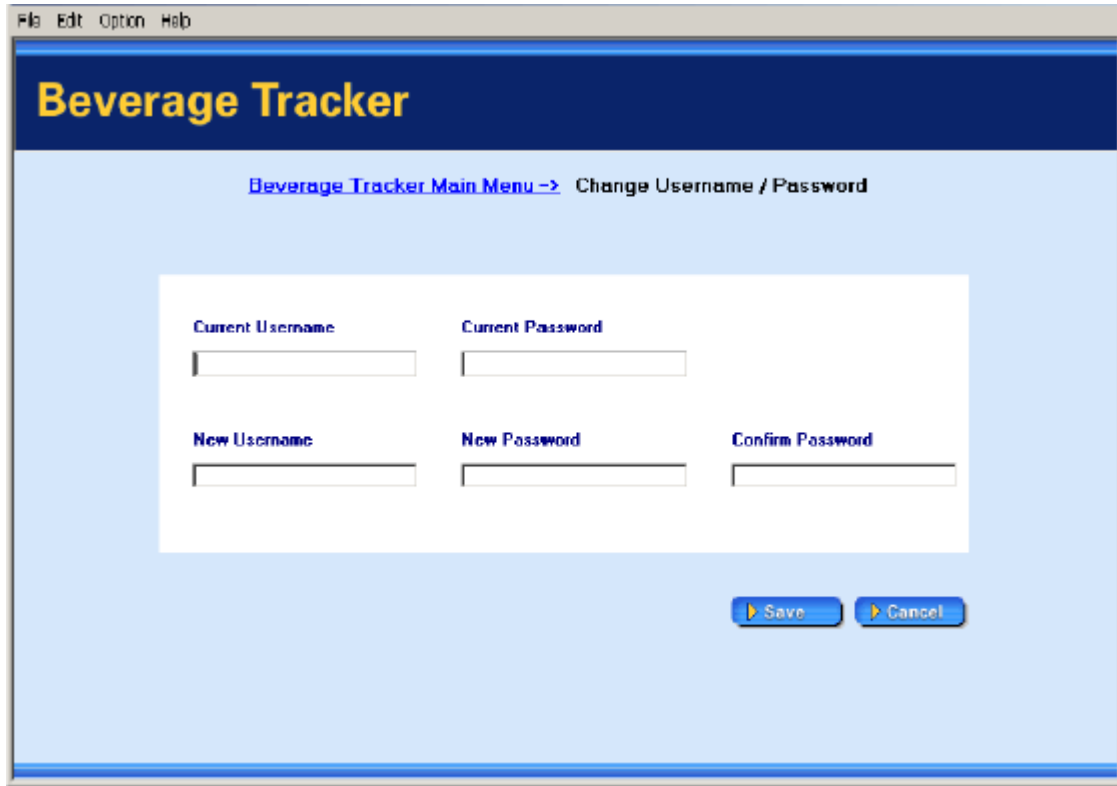
4.2 FILE MENU NAVIGATION

Use the File menu in the top left screen of all pages to navigate Beverage Tracker. The pull-down menu has a list of all the main sections of Beverage Tracker.



5 CHANGE USERNAME AND PASSWORD

Navigate to Change Username and Password Screen. Enter in all necessary information and click the Save button. A dialog box confirming the change has been made will appear.



The screenshot shows a software window titled "Beverage Tracker" with a menu bar (File, Edit, Option, Help). The main content area has a blue header with the text "Beverage Tracker Main Menu -> Change Username / Password". Below this is a white form with the following fields:

Current Username	Current Password	
<input type="text"/>	<input type="text"/>	
New Username	New Password	Confirm Password
<input type="text"/>	<input type="text"/>	<input type="text"/>

At the bottom right of the form are two buttons: "Save" and "Cancel".

You may choose to have no password and in this case you would simply leave the New Password and Confirm Password fields blank and click the Save button. Please note:

- Spaces are not allowed in passwords.
- The password is saved in an encrypted format, so there is no way you can retrieve your password by manually opening the database, so **do not forget your password**.

6 SETUP BEVERAGE TRACKER SOFTWARE

6.1 LIQUOR LIBRARY SETUP

The Liquor Library contains information about all of the liquor tracked by your Beverage Tracker system. Information includes: Liquor Brand, Liquor Type, Bottle Size, Bottle Cost, Retail Price per Serving and Shelf Category. Once information has been entered, you may sort information in the table by clicking on any of the column headings. Click on the column heading again to switch between ascending and descending view. A small blue arrow appears in the column by which the table is sorted.

	Liquor Brand	Liquor Type	Bottle Size	Bottle Cost(\$)	Retail Price/Serving(\$)	Shelf Category
	Absolut Citron	Vodka	1.0L	0.01	0.01	Call
	Absolut Kurant	Vodka	1.0L	0.01	0.01	Call
	Absolut Mandarin	Vodka	1.0L	0.01	0.01	Call
	Absolut Pepper	Vodka	1.0L	0.01	0.01	Call
	Absolut Vodka	Vodka	1.0L	0.01	0.01	Call
	Aftershook	Cordial/ Liqueur	1.0L	0.01	0.01	Call
	Amaretto Di Amore	Cordial/ Liqueur	1.0L	0.01	0.01	Call
	Amaretto Di Saronno	Cordial/ Liqueur	1.0L	0.01	0.01	Call
	Bacardi 151	Rum	1.0L	0.01	0.01	Call
	Bacardi Dark	Rum	1.0L	0.01	0.01	Call
	Bacardi Limon	Rum	1.0L	0.01	0.01	Call
	Bacardi Rum Spiced	Rum	1.0L	0.01	0.01	Call
	Bailey's Irish Cream	Creams	1.0L	0.01	0.01	Call
	Beelester Dry Gin	Gin	1.0L	0.01	0.01	Call

6.1.1 Add Liquor to Library

To add a liquor entry to the library, click on the Add button. A yellow row will appear. Enter in the liquor brand name and then assign it to a liquor type. If you did not upgrade an existing installation of Beverage Tracker, then the Liquor Library will contain a list of the 100 most popular liquors. A list of 2,500 liquors and their appropriate liquor type assignment is provided in a separate document, entitled Liquor Assignments. If you are unsure of the proper classification for particular liquor brands please refer to the list. Enter in the remaining information for the new liquor and click the Save button.

6.1.2 Delete Liquors from Library

To delete a liquor entry from the library, click on the row containing the liquor entry you wish to delete. A small blue arrow in the gray column indicates the selected row. Click the Delete button. A dialog box will ask you to confirm the deletion. Please note the spout assignments associated with the liquor will be deleted if you confirm.

6.1.3 Edit Existing Liquors

If you would like to make a change to one of the liquor entries, simply click on the cell you would like to edit. Make the desired changes and click the Save button. The Liquor Brand field is not editable. If you wish to edit liquor brands, you must delete the entire record and create a new entry.

6.1.4 Save Liquor Library Changes

To save liquor information, click the Save button. You must save each new record before you create another. If you forget to save, a dialog box will prompt you to save the new entry before proceeding. You must also save all changes before exiting the Liquor Library. If you forget to save a dialog box will prompt you to save the changes before proceeding.

6.2 STATION ASSIGNMENT

Station Assignment contains information about the stations in your bar where Beverage Tracker is used. Information includes Station ID (name) and Station Description.

Station ID	Station Description
Station 1	Vodka
Station 2	Rum

6.2.1 Add Station

To add a station, click on the Add button. A yellow row will appear. Enter in the Station Name and Station Description and click the Save button.

6.2.2 Delete Station

To delete a station, click on the row containing the station entry you wish to delete. A small blue arrow in the gray column indicates the selected row. Click the Delete button. A dialog box will ask you to confirm the deletion. Caution: the spout assignments and all pour data to those spouts associated with the station will be deleted if you confirm.

6.2.3 Edit Existing Station

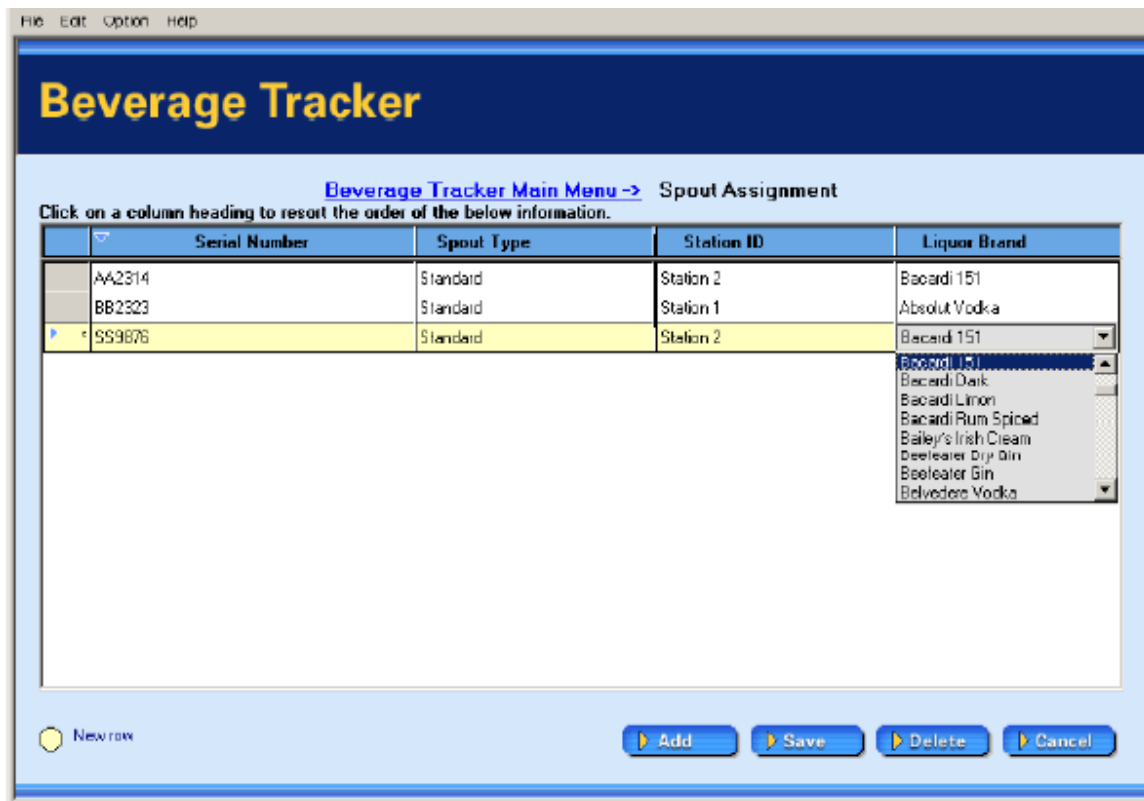
If you would like to make a change to one of the station entries, simply click on the cell you would like to edit. Make the desired changes and click the Save button. The Station Name field is not editable. If you wish to edit a station name, you must delete the entire record and create a new entry.

6.2.4 Save Station Changes

To save station information, click the Save button. You must save each new record before you create another. If you forget to save, a dialog box will prompt you to save the new entry before proceeding. You must also save all changes before exiting Station Assignment. If you forget to save changes a dialog box will prompt you to save the changes before proceeding.

6.3 SPOUT ASSIGNMENT

Spout Assignment contains information about each Beverage Tracker spout in your system. Information includes Spout Serial Number, Spout Type, Station ID and Liquor Brand associated with the spout. Once information has been entered, you may sort the table by any of the available column headings by clicking the column heading you want to sort. Click on the heading again to switch between ascending and descending view. A small blue arrow appears in the sorted column.



6.3.1 Add Spout

To add a spout, click on the Add button. A yellow row will appear. Enter in the unique spout serial number found on the bottom of each spout near the cork. Spout serial numbers are unique IDs consisting of 4 or 6 alphanumeric characters and can be found on the underside of the spouts. Enter in Spout Type and then assign the spout to a

specific Station ID and Liquor Brand. Choices for station and liquor are determined by the information entered in the last two steps. Once you have entered in all the information for the new spout, click the Save button.

6.3.2 Delete Spout

To delete a spout, click on the row containing the spout entry you wish to delete. A small blue arrow in the gray column indicates the selected row. Click the Delete button. A dialog box will ask you to confirm the deletion. Caution: deleting a spout will delete all pour information associated with it.

6.3.3 Edit Existing Spout

If you would like to make a change to one of the spout entries, simply click on the cell you would like to edit. Make the desired changes and click the Save button. The Serial Number field is not editable. If you wish to edit a serial number entry, you must delete the entire record and create a new entry.

6.3.4 Save Spout Changes

To save station information, click the Save button. You must save each new record before you create another. If you forget to save, a dialog box will prompt you to save the new entry before proceeding. You must also save all changes before exiting Spout Assignment. If you forget to save changes a dialog box will prompt you to save the changes before proceeding.

7 BEVERAGE TRACKER REPORTS

The Reporting section allows you to run reports on the data tracked by your Beverage Tracker system. The Reports page gives you the ability to specify the time and date range for your report and the type of report you would like to run.

7.1 RUN REPORT

To generate a report you must first select the time period. The default time period is the last 24 hours. The 24-hour period is calculated starting from the time you select the report to generate. You may narrow the report results by Station, Shelf, Liquor Type, Brand, Spout and Pour Amount. When selecting values from the drop-down boxes you have the option of selecting all or one of the items; you cannot select multiple items of the same type. To narrow your search by pour amount, click on either the Greater Than or Less Than radio button and enter the amount in the text box. Once you have selected your time period and the parameters, then select the type of report you would like to run. Each report you select will open in a separate window.

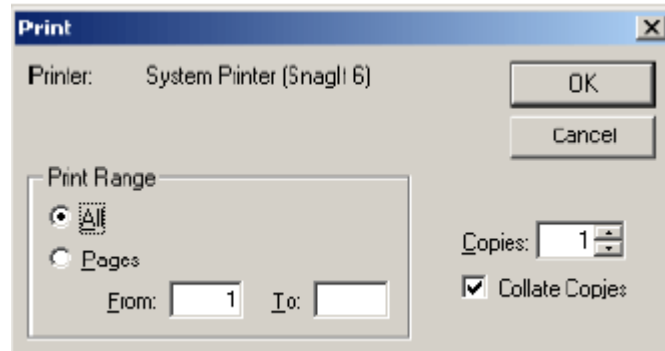
7.2 PRINT, EXPORT AND SAVE REPORT

To print, export or save a report from the report screen, use the tool bar at the top of the screen.



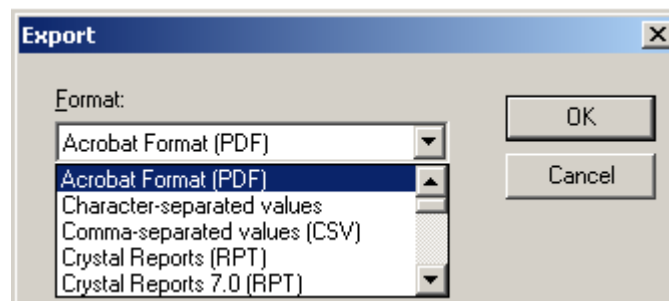
7.2.1 Print

To print, click on the Print Icon. A dialog box like the one below will appear. It allows you to select the pages to be printed and the number of copies.



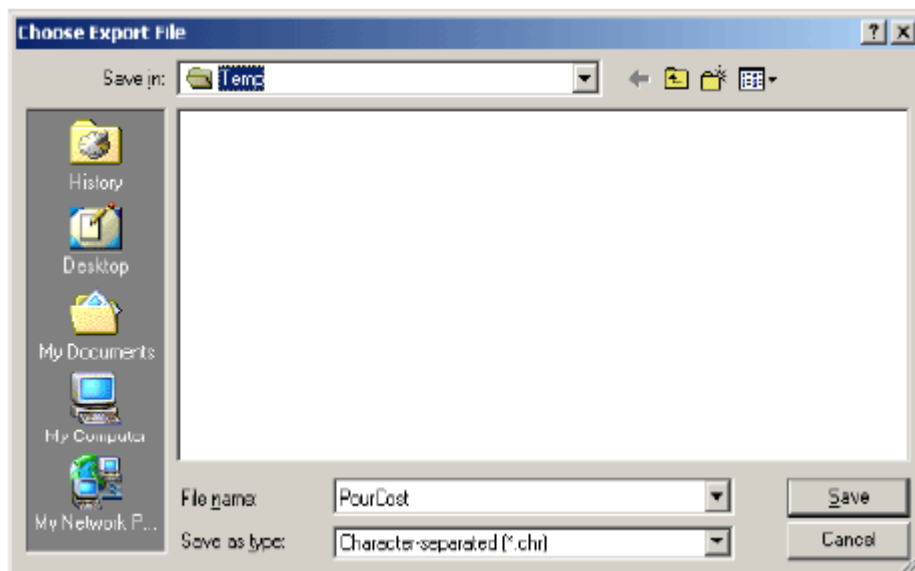
7.2.2 Export

To export a report, click on the Export Icon. Select the file type you would like the report to be exported from the drop down menu. For a list of all file types to which a report may be exported, refer to Appendix B of this manual.



7.2.3 Save

Once you select the type of report click the OK button, you will be prompted to save the report. Select the destination for the saved report and click the Save button.



8 REPORT TYPES

The Beverage Tracker system has 13 standard reports consisting of the Pour Cost Report, Pour Cost Chart, Consumption Report, Spout Battery Level Report, Pour by Station Report, Pour by Station Chart, Engage and Pour Report, Pour Log, Brand Pour Summary, Theoretical Sales Report, Theoretical Sales Chart and Setup Summary Report.

8.1 POUR COST REPORT

This report is useful in tracking liquor pour costs. When cost per bottle is entered into the software the report will display pour totals and their pour costs by brand and spout.

Pour Cost									
From Date : Saturday, January 11, 2003 1:47:34PM									
To Date : Sunday, January 12, 2003 1:47:34PM									
Stations: All									
Brands: All									
Spouts: All									
Liquor Types: All									
Shelves: All									
Liquor Brand	Serial No	Liquor Type	Total Pours	ml Poured	Cost per ml	Pour Cost	Average Size	Average Cost	
StationID: STAT01									
Jim Beam	AAD C	Whiskey/ Bourbon	3	110.30	\$0.04	\$4.41	36.77	\$1.47	
Absolut	A4E 5	Vodka	3	120.64	\$0.05	\$6.03	40.21	\$2.01	
Jim Beam	C008	Whiskey/ Bourbon	4	148.21	\$0.04	\$5.93	37.05	\$1.48	
Subtotal:			10	379.14		\$16.37	37.91	\$1.64	
StationID: STAT02									
Temporary	FF0002	Gin	3	90.76	\$0.04	\$3.83	30.25	\$1.21	
Subtotal:			3	90.76		\$3.83	30.25	\$1.21	
Totals:			13	469.91		\$20.20	36.15	\$1.54	
Summary									
StationID: STAT01			10	379.14		\$16.37	37.91	\$1.64	
StationID: STAT02			3	90.76		\$3.83	30.25	\$1.21	
Totals:			13	469.91		\$20.20	36.15	\$1.54	
Sunday, January 12, 2003									
Page 1 of 1									

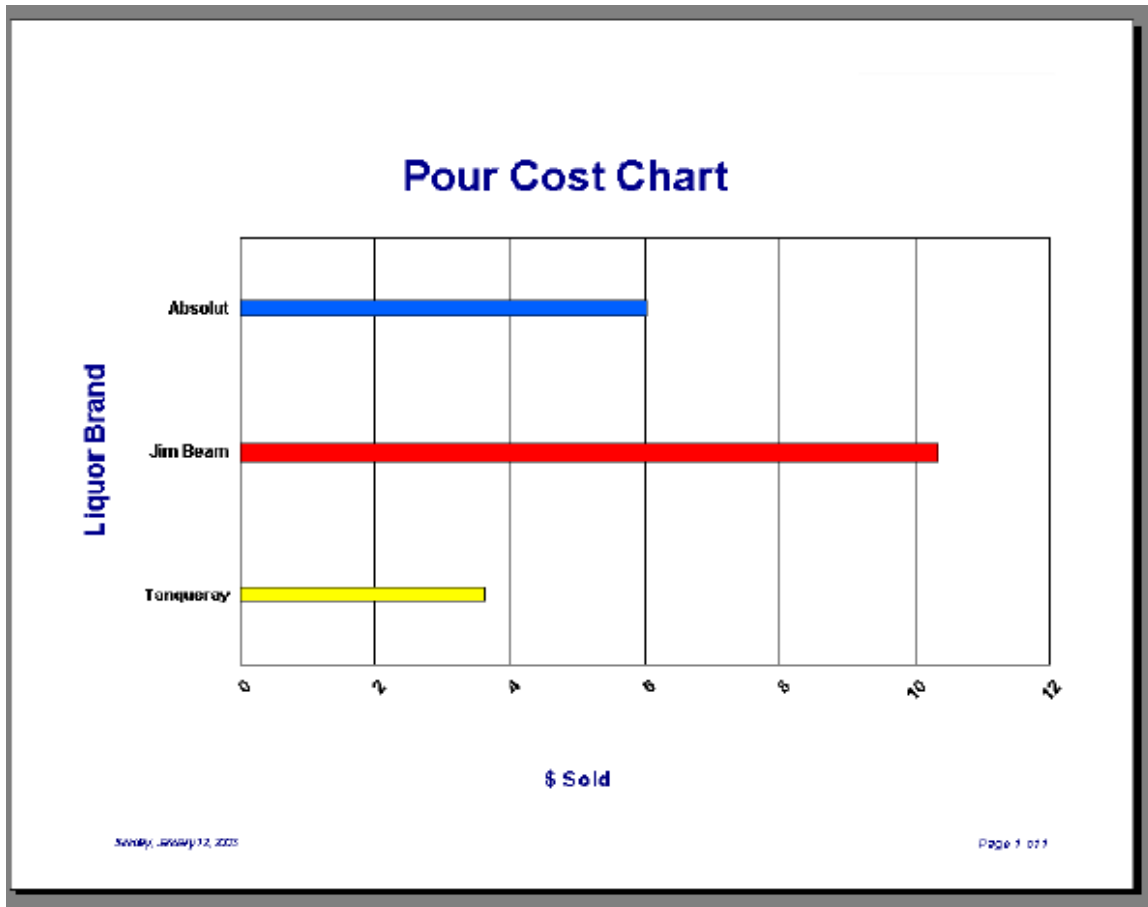
Key Information: Each spout is displayed with associated brand, total volume poured and total pour cost.

Key Benefit:

The cost of goods report lets bar operators quickly compare their pour costs to their sales records to yield cost of goods sold.

8.2 POUR COST CHART

The Cost of Goods chart graphically displays the dollar amount of liquor sold by individual brands. The graphical representation is useful for a quick comparison of one brand versus another in terms of revenue.



Key Information:

The Cost of Goods Chart graphically displays the dollar amount of liquor sold by individual brands.

Key Benefit:

The Cost of Goods Chart gives you a graphical comparison of sales revenue generated by each brand of liquor tracked by Beverage Tracker.

8.3 CONSUMPTION REPORT

This report shows how much alcohol by brand has been poured and how many bottles should have been depleted in a time period.

Consumption

From Date : Saturday, January 11, 2003 1:53:56 PM
 To Date : Sunday, January 12, 2003 1:53:56 PM
 Stations: All
 Brands: All
 Spouts: All
 Liquor Types: All
 Shelves: All

Liquor Brand	Serial No	Bottle Size (L)	Total Pours	ml Pours	Bottles Consumed
Station ID: STAT01					
Jin Team	AADC	075	3	110.30	0.15
ADSON1	AAE5	100	3	120.64	0.12
Jin Team	CDD6	075	4	145.21	0.20
Subtotals:			10	379.14	0.47
Station ID: STAT02					
Taqueray	FFDDT	100	3	90.76	0.09
Subtotals:			3	90.76	0.09
Totals:			13	469.91	0.56

Summary

Station ID: STAT01	Subtotals:	10	379.14	0.47
Station ID: STAT02	Subtotals:	3	90.76	0.09
Totals:		13	469.91	0.56

Key Information:

Bottles consumed by spout and brand.

Key Benefit:

The consumption report reduces the need for nightly physical inventory checks of backroom and par stock.

8.4 POURS BY STATION REPORT

The Pours by Station Report shows the number of pours at each station allowing you to compare pour amounts and liquor types being poured at various stations within your bar.

Pours By Station			
From Date : Saturday, January 11, 2003 1:54:38PM			
To Date : Sunday, January 12, 2003 1:54:38PM			
<i>Stations: All</i>			
<i>Brands: All</i>			
<i>Spouts: All</i>			
<i>Liquor Types: All</i>			
<i>Shelves: All</i>			
<i>Liquor Brand</i>	<i>Liquor Type</i>	<i>Serial No</i>	<i>Total Pours</i>
Station ID: STAT01			
Absolut	Vodka	AAE5	3
Jim Beam	Whiskey/ Bourbon	C008	4
Jim Beam	Whiskey/ Bourbon	AADC	3
Sub Total :			10
Station ID: STAT02			
Tanqueray	Gin	FF0007	3
Sub Total :			3
Total :			13

Key Information:

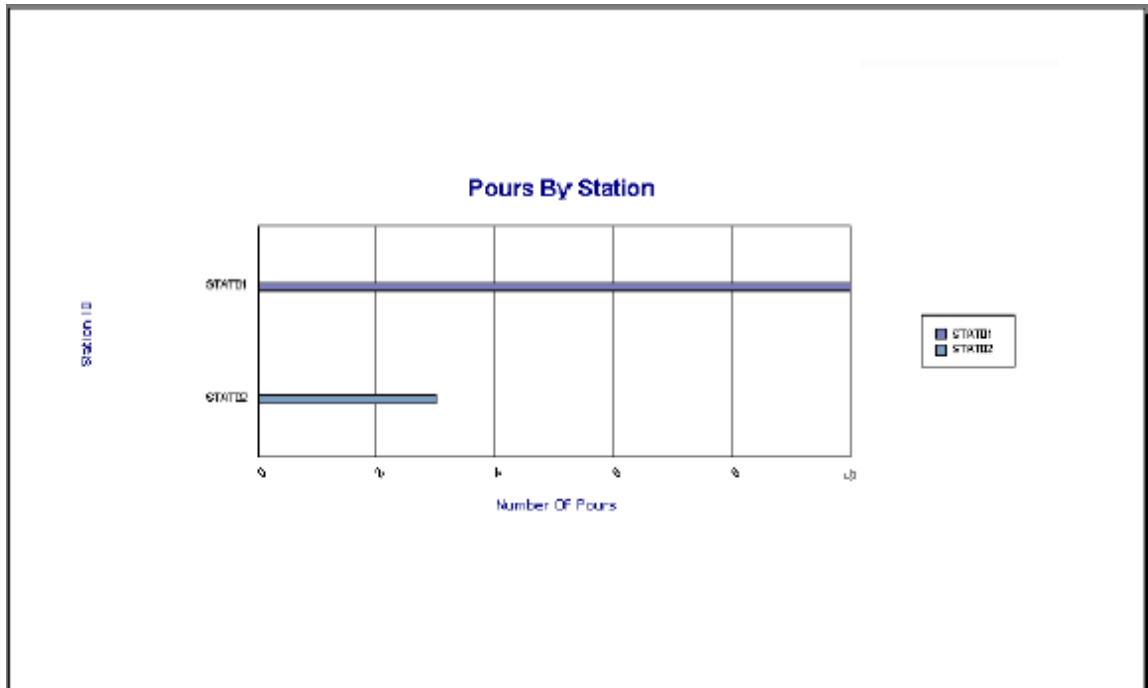
The Pours by Station Report shows the number of pours at each station, categorized by individual spout numbers and liquor brand.

Key Benefit:

The Pours by Station Report allows you to compare general pour volumes and liquor types and brands poured at various stations within your bar.

8.5 POURS BY STATION CHART

The Pours by Station Chart is a graphical representation of the Pours by Station Report.



Key Information:

The Pours by Station Chart gives you a graphical representation of the number of pours by station.

Key Benefit:

The Pours by Station Chart allows you to compare pour volumes between the various stations in your bar.

8.6 ENGAGE AND POUR REPORT

The Engage and Pour Report allows you to track activities occurring at each station in chronological order. The activities tracked are pours, engages and disengages.

Engage and Pour Report			
From Date : Saturday, January 11, 2003 1:57:17 PM			
To Date : Sunday, January 12, 2003 1:57:17 PM			
Stations: All			
Brands: All			
Spouts: All			
Liquor Types: All			
Shelves: All			
Liquor Brand	Serial	Event Type	Date
StationID: STAT01			
Absolut	AAXE6	Engage	01/12/2003 12:52:50 PM
Jim Beam	AADC	Disengage	01/12/2003 12:53:20 PM
Jim Beam	AADC	Engage	01/12/2003 12:53:22 PM
Jim Beam	C006	Engage	01/12/2003 12:53:31 PM
Absolut	AAXE5	Pour	01/12/2003 12:53:43 PM
Absolut	AAXE6	Pour	01/12/2003 12:53:48 PM
Absolut	AAXE5	Pour	01/12/2003 12:54:00 PM
Jim Beam	AADC	Pour	01/12/2003 12:54:24 PM
Jim Beam	AADC	Pour	01/12/2003 12:54:26 PM
Jim Beam	AADC	Pour	01/12/2003 12:54:32 PM
Jim Beam	C006	Pour	01/12/2003 12:54:40 PM
Jim Beam	C006	Pour	01/12/2003 12:54:53 PM
Jim Beam	C006	Pour	01/12/2003 12:54:57 PM
Jim Beam	C006	Pour	01/12/2003 12:55:01 PM
StationID: STAT02			
Tanqueray	FF0007	Engage	01/12/2003 1:31:13 PM
Tanqueray	FF0007	Pour	01/12/2003 1:31:29 PM
Tanqueray	FF0007	Pour	01/12/2003 1:31:43 PM
Tanqueray	FF0007	Pour	01/12/2003 1:31:46 PM
Tanqueray	FF0007	Disengage	01/12/2003 1:32:42 PM
Tanqueray	FF0007	Engage	01/12/2003 1:32:59 PM
Tanqueray	FF0007	Disengage	01/12/2003 1:33:09 PM
Tanqueray	FF0007	Engage	01/12/2003 1:33:39 PM
Tanqueray	FF0007	Disengage	01/12/2003 1:33:42 PM
Tanqueray	FF0007	Engage	01/12/2003 1:33:47 PM
Tanqueray	FF0007	Disengage	01/12/2003 1:33:50 PM
Tanqueray	FF0007	Engage	01/12/2003 1:33:59 PM
Tanqueray	FF0007	Disengage	01/12/2003 1:34:39 PM
Tanqueray	FF0007	Engage	01/12/2003 1:34:42 PM
Tanqueray	FF0007	Disengage	01/12/2003 1:34:54 PM

Key Information:

The Activity Report tracks activities at each station in chronological order.

Key Benefit:

The Activity Report allows you to examine activities chronologically at each station. This information can give insight into unusual pour activities.

8.7 POUR LOG

This report is useful for examining in detail how liquor is used in bar operations. The journal report displays all information for a particular spout for a time period including what location, station, shelf and brand it is assigned to, plus every individual engage, disengage and pour event. Included with the pour event is the exact amount of liquor poured.

Pour Log

From Date : Saturday, January 11, 2003 1:08:45PM
To Date : Sunday, January 12, 2003 1:08:45PM

Stations: All
Brands: All
Spouts: All
Liquor Types: All
Shelves: All

Serial No	Spout Type	Shelf Category	Liquor Brand	Liquor Type	Bottle Size (L)	ml Poured	Pour Cost	Date
StationID: STAT01								
AAE5	Standard	C all	Absolut	Vodka	1.00	35.62	\$1.79	1/12/2003 12:53:43PM
AAE5	Standard	C all	Absolut	Vodka	1.00	43.66	\$2.18	1/12/2003 12:53:48PM
AAE5	Standard	C all	Absolut	Vodka	1.00	41.36	\$2.07	1/12/2003 12:54:00PM
AADC	Standard	C all	Jim Beam	Whiskey/ Bourbon	0.75	37.91	\$1.52	1/12/2003 12:54:24PM
AADC	Standard	C all	Jim Beam	Whiskey/ Bourbon	0.75	34.47	\$1.38	1/12/2003 12:54:27PM
AADC	Standard	C all	Jim Beam	Whiskey/ Bourbon	0.75	37.91	\$1.52	1/12/2003 12:54:32PM
CO08	Standard	C all	Jim Beam	Whiskey/ Bourbon	0.75	38.77	\$1.47	1/12/2003 12:54:49PM
CO08	Standard	C all	Jim Beam	Whiskey/ Bourbon	0.75	37.91	\$1.52	1/12/2003 12:54:53PM
CO08	Standard	C all	Jim Beam	Whiskey/ Bourbon	0.75	38.77	\$1.47	1/12/2003 12:54:57PM
CO08	Standard	C all	Jim Beam	Whiskey/ Bourbon	0.75	38.77	\$1.47	1/12/2003 12:55:01PM
Sub totals:						379.14	\$16.37	
StationID: STAT02								
FF0007	Standard	C all	Tanqueray	Gin	1.00	41.36	\$1.65	1/12/2003 1:31:38PM
FF0007	Standard	C all	Tanqueray	Gin	1.00	25.28	\$1.01	1/12/2003 1:31:43PM
FF0007	Standard	C all	Tanqueray	Gin	1.00	24.13	\$0.97	1/12/2003 1:31:46PM
Sub totals:						90.76	\$3.63	
Totals:						469.91	\$20.00	

Summary

StationID: STAT01	Sub totals:	379.14	\$16.37
StationID: STAT02	Sub totals:	90.76	\$3.63
Totals:		469.91	\$20.00

Key Information:

Spout removal and placement on a bottle and pour information is listed chronologically by station.

Key Benefit:

The Pour Log report tracks the exact and detailed events of the bar's pour operations. You can view pour trends, popularity of brands and exact actions of bar tenders. The other summary reports allow you to spot an unusual trend in operation and the transaction log lets you drill down into the details. This contributes to Beverage Tracker's ability to reduce alcohol shrinkage. Beverage Tracker helps honest bartenders stay honest. Beverage Tracker allows you to watch for under and over pouring in operations and educate bar tenders on how well they are pouring.

8.8 BRAND POUR SUMMARY

This report is useful for examining in detail how liquor is used in bar operations. The journal report displays all information for a particular spout for a time period including what location, station, shelf and brand it is assigned to, plus every individual engage, disengage and pour event. Included with the pour event is the exact amount of liquor poured.

Brand Pour Summary

From Date : Saturday, January 11, 2003 2:00:24 PM

To Date : Sunday, January 12, 2003 2:00:24 PM


Stations: All

Brands: All

Spouts: All

Liquor Types: All

Shelves: All



Liquor Brand : Absolut

StationID: STAT01

SerialNo	Shelf Category	ml Poured	Cost Of Pour	Date
AAE5	Call	41.35	\$2.07	1/12/2003 12:54:00 PM
AAE5	Call	43.65	\$2.18	1/12/2003 12:53:48 PM
AAE5	Call	35.62	\$1.78	1/12/2003 12:53:43 PM

Summary for Brand : Absolut(3 detail records)

Sum	120.62	\$5.03
Avg	40.21	\$2.01
Min	35.62	\$1.78
Max	43.65	\$2.18

Liquor Brand : Jim Beam

StationID: STAT01

SerialNo	Shelf Category	ml Poured	Cost Of Pour	Date
AADC	Call	37.91	\$1.82	1/12/2003 12:54:32 PM
AADC	Call	34.47	\$1.76	1/12/2003 12:54:27 PM
AADC	Call	37.91	\$1.82	1/12/2003 12:54:24 PM
C006	Call	36.77	\$1.47	1/12/2003 12:55:01 PM
C006	Call	36.77	\$1.47	1/12/2003 12:54:57 PM
C006	Call	37.91	\$1.82	1/12/2003 12:54:53 PM
C006	Call	36.77	\$1.47	1/12/2003 12:54:49 PM

Summary for Brand : Jim Beam(7 detail records)

Key Information:

Spout removal and placement on a bottle and pour information is listed chronologically by specific spout.

Key Benefit:

The Brand Pour Summary report tracks the exact and detailed events of the bar's pour operations. You can view pour trends, popularity of brands and exact actions of bar tenders. The other summary reports allow you to spot an unusual trend in operation and the transaction log lets you drill down into the details. This contributes to Beverage Tracker's ability to reduce alcohol shrinkage. Beverage Tracker helps honest bar tenders stay honest. Beverage Tracker allows you to watch for under and over pouring in operations and educate bar tenders on how well they are pouring.

8.9 THEORETICAL SALES REPORT

This report is useful to gauge the difference between register/POS recorded revenue and how much revenue should have been generated based on liquor usage. When revenue generated by brand is entered into the software, the report will display pour totals and how much revenue the pours should have generated.

Theoretical Sales Report							
From Date : Saturday, January 11, 2003 2:05:03PM							
To Date : Sunday, January 12, 2003 2:05:03PM							
Stations: All							
Brands: All							
Spouts: All							
Liquor Types: All							
Shelves: All							
Liquor Brand	Liquor Type	Serial No	Bottle Size (L)	Total Pours	ml Pours	Theoretical Sales	Station ID
StationID: STAT01							
Jim Beam	Whiskey/ Bourbon	AADC	0.75	3	110.30	\$18.85	STAT01
Absolut	Vodka	AAE5	1.00	3	120.64	\$20.40	STAT01
Jim Beam	Whiskey/ Bourbon	C006	0.75	4	148.21	\$25.06	STAT01
Subtotals:				10	379.14	\$64.10	
StationID: STAT02							
Tanqueray	Gin	FF0007	1.00	3	99.76	\$15.35	STAT02
Subtotals:				3	99.76	\$15.35	
Totals:				13	469.91	\$79.45	
Summary							
StationID: STAT01				Subtotals:	10	379.14	\$64.10
StationID: STAT02				Subtotals:	3	99.76	\$15.35
				Totals:	13	469.91	\$79.45

Information:

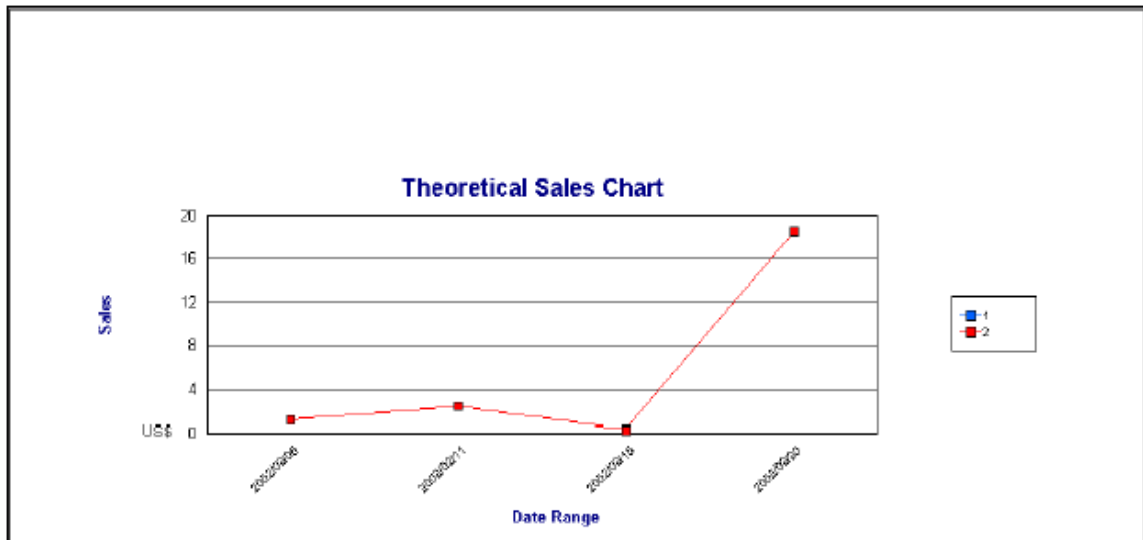
The theoretical sales report presents the spout, brand associated with it, total ounces poured, price per ounce and estimated revenue generated.

Key Benefit:

The theoretical sales report allows quick comparison of dollar for dollar registered sales directly against what was poured. This report is very useful in noticing "holes" in pour operations where liquor is used but not charged.

8.10 THEORETICAL SALES CHART

The Theoretical Sales Chart allows you to chart two different time period's theoretical sales information against each other. You can compare the information to recorded revenues or use it to show trends in sales between two different time periods.



Key Information:

This chart graphs the theoretical sales revenue for two different time periods.

Key Benefit:

Allows for quick and easy comparisons of revenue information from various time periods.

8.11 SETUP SUMMARY REPORT

The Setup Summary report allows you to see a summary of spout information by Station. The report displays the Liquor Type, Shelf Type and Cost for each spout within each Station.

Setup Summary Report					
<i>Stations: All</i> <i>Brands: All</i> <i>Spouts: All</i> <i>Liquor Types: All</i> <i>Shelves: All</i>					
<i>Brand/Size</i>	<i>Liquor Type</i>	<i>Shelf Type</i>	<i>BottleCost</i>	<i>Rev / Serving</i>	<i>SerialNo</i>
Station: STAT01					
Absolut / 1.00	Vodka	Call	\$50.00	\$5.00	AAE5
Jim Beam / 0.75	Whiskey/ Bourbon	Call	\$30.00	\$5.00	C006
Jim Beam / 0.75	Whiskey/ Bourbon	Call	\$30.00	\$5.00	AA0C
Station: STAT02					
Tanqueray / 1.00	Gin	Call	\$40.00	\$5.00	FF0007

Key Information:

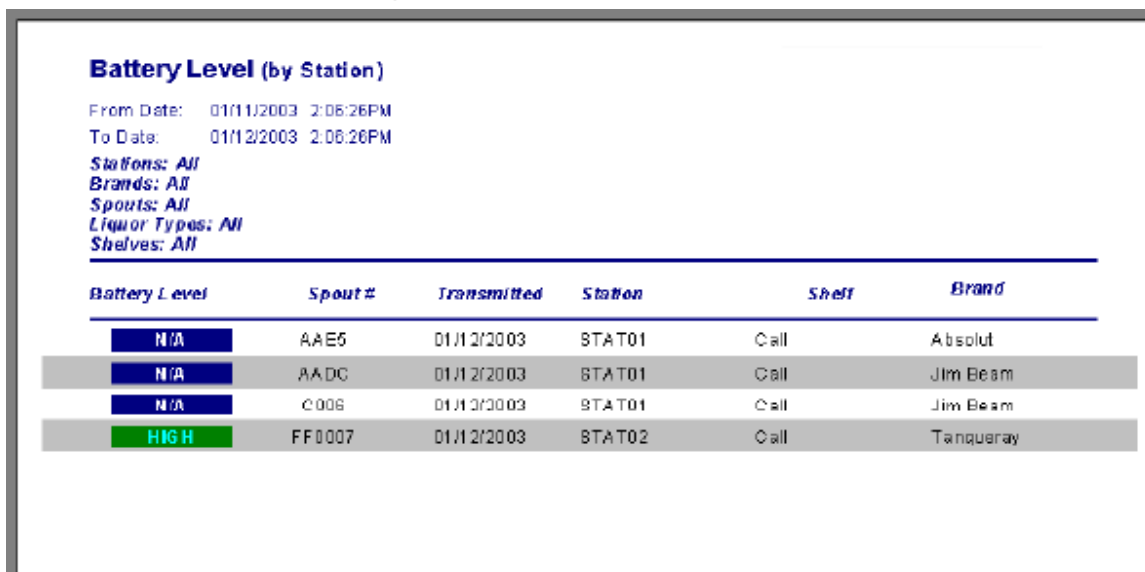
Liquor type, cost and location information for each spout.

Key Benefit:

Allows for quick overview of your setup and spout assignment.

8.12 SPOUT BATTERY LEVEL REPORT

The Battery Level Report shows the status of the battery for each spout. A Green/High icon indicates that the battery is strong. Yellow/Medium indicates that the battery is starting to weaken but is still strong enough to transmit reliable data and Red/Low indicates a low or dead battery and that the spout should be replaced. Unlike other reports, you can choose to order the information in the Battery Level report by any one of: Station, Battery Level, Shelf, Transmitted Date, Brand, Spout. To do so, select the Battery Level report from the Beverage Tracker Reporting screen, then select the desired sort order from the drop-down box.



Battery Level (by Station)

From Date: 01/11/2003 2:06:26PM
To Date: 01/12/2003 2:06:26PM
Stations: All
Brands: All
Spouts: All
Liquor Types: All
Shelves: All

Battery Level	Spout #	Transmitted	Station	Shelf	Brand
N/A	AAE5	01/12/2003	STAT01	Call	Absolut
N/A	AADC	01/12/2003	STAT01	Call	Jim Beam
N/A	C006	01/12/2003	STAT01	Call	Jim Beam
HIGH	FF0007	01/12/2003	STAT02	Call	Tanqueray

Key Information:

The Battery Level report shows the level of the battery for each spout.

Key Benefit:

Allows you to identify spouts that need to be replaced before losing valuable pour data.

APPENDIX A - SOFTWARE AND COMPUTER SYSTEM COMPATIBILITY**8.13 MINIMUM HARDWARE REQUIREMENTS**

- Pentium II/Celeron MMX 300 Mhz or higher
- 64 MB RAM
- Hard Drive space requirement: 200 MB free space (for database growth)

8.14 OPERATING SYSTEMS

- Microsoft Windows 98, NT 4.0, 2000

APPENDIX B - EXPORT FORMATS FOR BEVERAGE TRACKER REPORTS

Beverage Tracker reports may be exported in the following formats:

- Acrobat Format (PDF)
- Character-separated values
- Comma-separated values (CSV)
- Crystal Reports (RPT)
- Crystal Reports 7.0 (RPT)
- Excel 5.0 (XLS)
- Excel 5.0 (XLS)(Extended)
- Excel 7.0 (XLS)
- Excel 7.0 (XLS) (Extended)
- Excel 8.0 (XLS)
- Excel 8.0 (XLS) (Extended)
- Lotus 1-2-3 (WK1)
- Lotus 1-2-3 (WK3)
- Lotus 1-2-3 (WKS)
- ODBC- BevTrack
- ODBC- CRM_PROD
- ODBC- dBASE Files
- ODBC- dBASE Files- Word
- ODBC- ECDCMusic
- ODBC- Excel Files
- ODBC- FoxPro Files – Word
- ODBC- MS Access Database
- ODBC- Visual FoxPro Database
- ODBC- Visual FoxPro Tables
- Paginated Text
- Record style (columns of values)
- Rich Text Format
- Tab-separated text
- Tab-separated values
- Text
- Word for Windows documents