

The Transmitter circuit board is under this metal shield

This is the Antenna. It attaches to the Transmitter circuit board by means of a permanently soldered coax cable.

This is the Audio circuit board. The Transmitter circuit board attaches to the Audio circuit board.

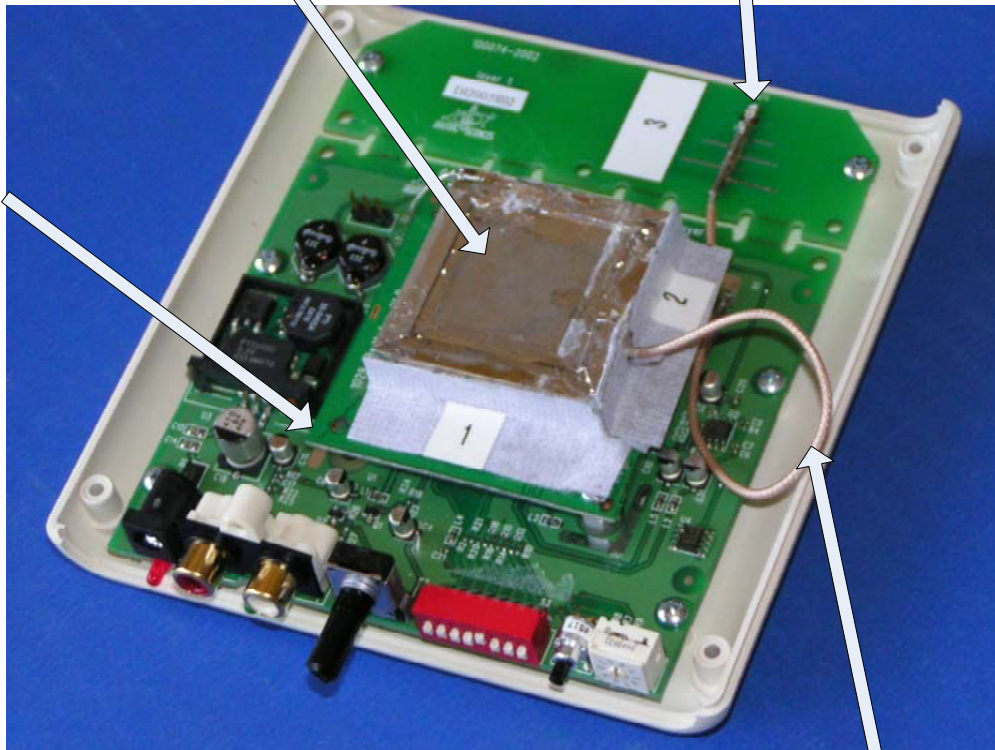


Photo of the fully assembled Transmitter circuit board.

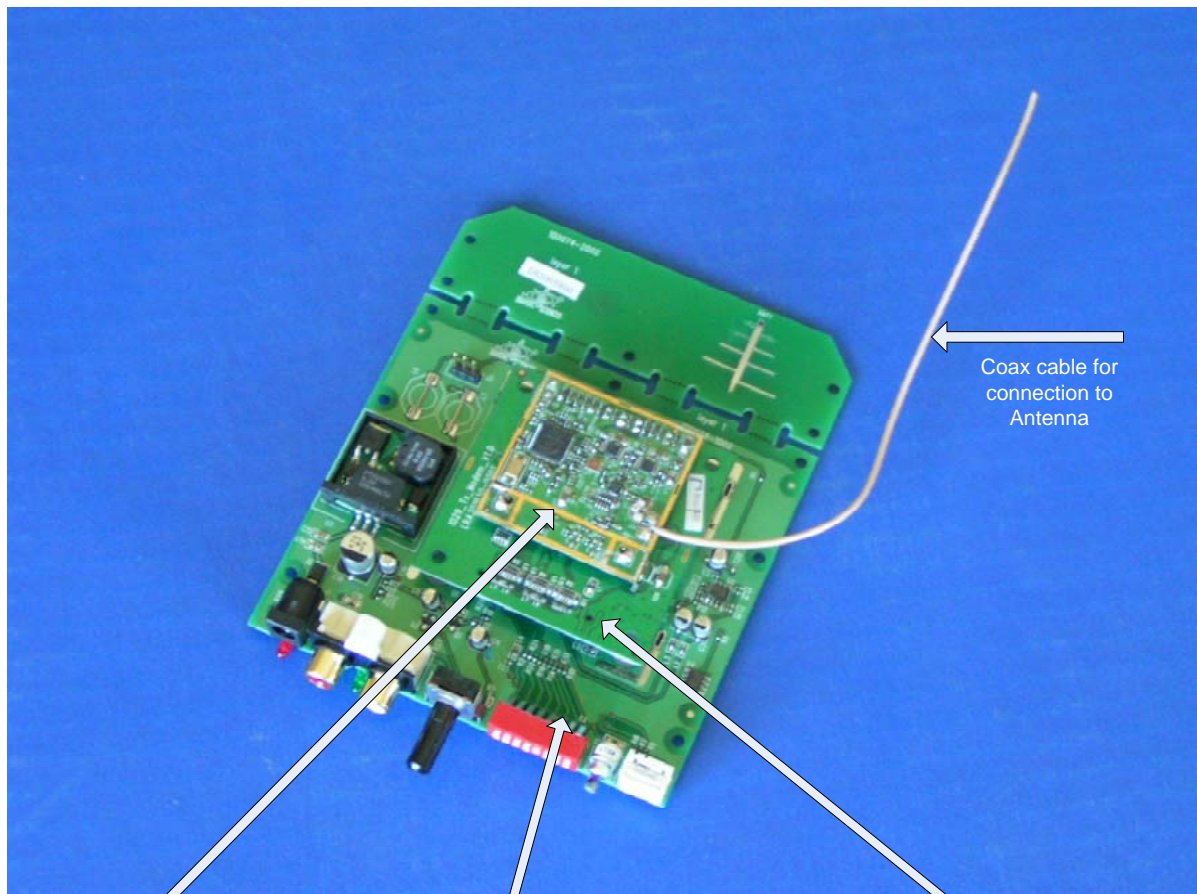
A photo of the Transmitter with the metal shield removed is shown on Page 2.

This is the coax cable that connects the Transmitter circuit board to the Antenna

INTERNAL PHOTOS
Page 1 of 3

Photo of the Transmitter circuit board with the metal shield removed.

A photo of the Mother circuit board and the Audio circuit board & attached Transmitter circuit board is on Page 3.



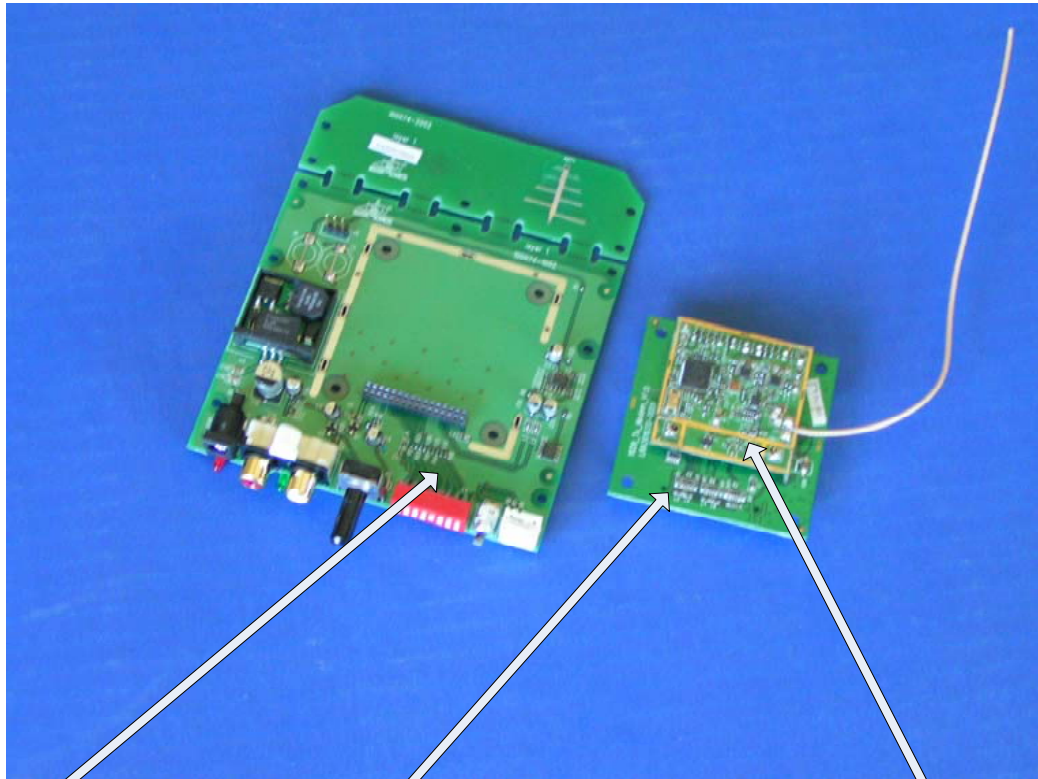
Coax cable for
connection to
Antenna

Transmitter circuit board with the metal shield
removed

This is the Mother circuit board.

This is the Audio circuit board which physically supports
the Transmitter circuit board.

INTERNAL PHOTOS
Page 2 of 3



This is the Mother circuit board

This is the Audio circuit board

This is the Transmitter circuit board with the
metal shield removed



Top



Bottom