



TEST REPORT

For SAR

Report No..... : CHTW25050044

Project No : SHT2504052401W

FCC ID : **TEY-X1PRO**

Applicant's name..... : ABELL INDUSTRIES CO.,LTD

Address..... : 701-702, 7/F, D Bldg, Qianwan Hard Technology Industrial Park,
Nanchang community, Xixiang Rd., Bao An Dist., Shenzhen.

Product Name : Two way radio

Trade Mark..... : ABELL

Model No..... : X1 pro

Listed Model(s) : X1, X3, X3 pro

Standard : **FCC 47 Part 2.1093**
IEEE Std 1528™-2013

Date of receipt of test sample..... : 2025/4/29

Date of testing..... : 2025/5/8- 2025/5/9

Date of issue..... : 2025/5/21

Result..... : **PASS**



Compiled by
(Position+Printed name+Signature). : File administrator Caspar Chen

Supervised by
(Position+Printed name+Signature). : Project Engineer Xiaodong Zhao

Approved by
(Position+Printed name+Signature). : RF Manager Xu Yang

Testing Laboratory Name : **Shenzhen Huatongwei International Inspection Co., Ltd.**

Address : Building 7, Baiwang Idea Factory, No.1051, Songbai Road, Yangguang
Community, Xili Subdistrict, Nanshan District, Shenzhen, Guangdong,
China

Test Report Form No. : R0054

Test Report Form(s) Originator..... : Shenzhen Huatongwei International Inspection Co., Ltd.

Master TRF : Dated 2025-04

Shenzhen Huatongwei International Inspection Co., Ltd. All rights reserved.

This publication may be reproduced in whole or in part for non-commercial purposes as long as the Shenzhen Huatongwei International Inspection Co., Ltd. is acknowledged as copyright owner and source of the material. Shenzhen Huatongwei International Inspection Co., Ltd. takes no responsibility for and will not assume liability for damages resulting from the reader's interpretation of the reproduced material due to its placement and context. The test report merely correspond to the test sample. The authenticity of this Test Report and its contents can be verified by contacting the Laboratory, responsible for this Test Report.

Contents

<u>1.</u>	<u>Statement of Compliance</u>	<u>3</u>
<u>2.</u>	<u>Test Standards and Report version</u>	<u>4</u>
2.1.	Test Standards	4
2.2.	Report version	4
<u>3.</u>	<u>Summary</u>	<u>5</u>
3.1.	Client Information	5
3.2.	Product Description	5
3.3.	Radio Specification Description	6
3.4.	Test frequency list	6
3.5.	Testing Laboratory Information	7
3.6.	Environmental conditions	7
<u>4.</u>	<u>Equipments Used during the Test</u>	<u>8</u>
<u>5.</u>	<u>Measurement Uncertainty</u>	<u>9</u>
<u>6.</u>	<u>SAR Measurements System Configuration</u>	<u>10</u>
6.1.	SAR Measurement Set-up	10
6.2.	DASY5 E-field Probe System	11
6.3.	Phantoms	12
6.4.	Device Holder	12
<u>7.</u>	<u>SAR Test Procedure</u>	<u>13</u>
7.1.	Scanning Procedure	13
7.2.	Data Storage and Evaluation	15
<u>8.</u>	<u>Position of the wireless device in relation to the phantom</u>	<u>17</u>
8.1.	Front-of-face	17
8.2.	Body Position	17
<u>9.</u>	<u>Dielectric Property Measurements & System Check</u>	<u>18</u>
9.1.	Tissue Dielectric Parameters	18
9.2.	SAR System Validation	19
9.3.	System Check	19
<u>10.</u>	<u>SAR Exposure Limits</u>	<u>22</u>
<u>11.</u>	<u>Radiated Power Measurement Results and Tune-up</u>	<u>23</u>
<u>12.</u>	<u>SAR Measurement Results</u>	<u>24</u>
<u>13.</u>	<u>Test Setup Photos</u>	<u>25</u>
<u>14.</u>	<u>External and Internal Photos of the EUT</u>	<u>26</u>

1 . Statement of Compliance

Maximum Reported SAR (W/kg @1g)	
RF Exposure Conditions	TNF
Head(Dist.= 25mm)	0.894
Body-worn(Dist.= 0mm)	1.579

Note:

1. This device is in compliance with Specific Absorption Rate (SAR) for occupational/controlled exposure limits (8 W/kg) specified in FCC 47 CFR part 2 (2.1093) and ANSI/IEEE C95.1-1992.
2. This device had been tested in accordance with the measurement methods and procedures specified in IEEE 1528 and FCC KDB publications.

2. Test Standards and Report version

2.1. Test Standards

The tests were performed according to following standards:

[FCC 47 Part 2.1093](#): Radiofrequency Radiation Exposure Evaluation:Portable Devices

[IEEE Std C95.1, 1999 Edition](#): IEEE Standard for Safety Levels with Respect to Human Exposure to Radio Frequency Electromagnetic Fields, 3 kHz to 300 GHz

[IEEE Std 1528™-2013](#): IEEE Recommended Practice for Determining the Peak Spatial-Average Specific Absorption Rate (SAR) in the Human Head from Wireless Communications Devices: Measurement Techniques.

FCC published RF exposure KDB procedures:

[KDB 865664 D01 SAR Measurement 100 MHz to 6 GHz v01r04](#): SAR Measurement Requirements for 100 MHz to 6 GHz

[KDB 865664 D02 RF Exposure Reporting v01r02](#): RF Exposure Compliance Reporting and Documentation Considerations

[KDB 447498 D04 Interim General RF Exposure Guidance v01](#): Mobile and Portable Device RF Exposure Procedures and Equipment Authorization Policies

[KDB 643646 D01:SAR Test for PTT Radios v01r03](#): SAR Test Reduction Considerations for Occupational PTT Radios

[TCB workshop](#): April, 2019; Page 19, Tissue Simulating Liquids (TSL)

2.2. Report version

Revision No.	Date of issue	Description
N/A	2025-05-21	Original

3. Summary

3.1. Client Information

Applicant:	ABELL INDUSTRIES CO.,LTD
Address:	701-702, 7/F, D Bldg, Qianwan Hard Technology Industrial Park, Nanchang community, Xixiang Rd., Bao An Dist., Shenzhen.
Manufacturer:	ABELL INDUSTRIES CO.,LTD
Address:	701-702, 7/F, D Bldg, Qianwan Hard Technology Industrial Park, Nanchang community, Xixiang Rd., Bao An Dist., Shenzhen.

3.2. Product Description

Main unit	
Product name:	Two way radio
Trade Mark:	ABELL
Model No.:	X1 pro
Listed Model(s):	X1, X3, X3 pro
Power supply:	DC 3.7V from battery
Hardware version:	V1.02
Software version:	V1.0.9
Device Dimension:	Length(With antenna) x Width x Thickness (mm): 137 x 45 x 22
Device Category:	Portable
Product stage:	Production unit
RF Exposure Environment:	Occupational/Controlled
HTW test sample No.:	YPHT25040524001
Ancillary unit	
Battery information:	Model: AB-L1801 3.7V, 1800mAh/6.66Wh

3.3. Radio Specification Description

Operation Frequency Range:	400MHz~480MHz		
Rated Output Power:	<input checked="" type="checkbox"/> High Power: 1.5W		<input checked="" type="checkbox"/> Low Power: 0.5W
Modulation Type:	Analog: FM		
	Digital: 4FSK		
Channel Bandwidth:	Analog:	<input checked="" type="checkbox"/> 12.5kHz	<input type="checkbox"/> 20kHz <input type="checkbox"/> 25kHz
	Digital:	<input type="checkbox"/> 6.25kHz	<input checked="" type="checkbox"/> 12.5kHz
Antenna Type:	1/4λ		
<i>Remark:</i> 1. The EUT battery must be fully charged and checked periodically during the test to ascertain uniform power. 2. The maximum duty cycle supported by the device is 50%.			

3.4. Test frequency list

When the frequency channels required for SAR testing are not specified, the following should be applied to determine the number of required test channels. The test channels should be evenly spread across the transmission frequency band of each wireless mode.

$$N_c = \text{Round} \left\{ \left[100(f_{\text{high}} - f_{\text{low}}) / f_c \right]^{0.5} \times (f_c / 100)^{0.2} \right\},$$

N_c is the number of test channels, rounded to the nearest integer,
 f_{high} and f_{low} are the highest and lowest channel frequencies within the transmission band,
 f_c is the mid-band channel frequency,
 all frequencies are in MHz.

Operation Frequency		Test Frequency number
Start Frequency	Stop Frequency	
400	480	6

Modulation Type	Channel Bandwidth	Test Channel	Test Frequency (MHz)
			TX
Analog	12.5kHz	CH1	400.0125
		CH2	416.0000
		CH3	462.0000
		CH4	448.0000
		CH5	464.0000
		CH6	479.9875
Digital	12.5kHz	CH1	400.0125
		CH2	416.0000
		CH3	462.0000
		CH4	448.0000
		CH5	464.0000
		CH6	479.9875

3.5. Testing Laboratory Information

Laboratory Name	Shenzhen Huatongwei International Inspection Co., Ltd.	
Laboratory Location	Building 7, Baiwang Idea Factory, No.1051, Songbai Road, Yangguang Community, Xili Subdistrict, Nanshan District, Shenzhen, Guangdong, China	
Connect information:	Tel: 400-963-0755 E-mail: cs@szhtw.com.cn http://www.szhtw.com.cn	
Qualifications	Type	Accreditation Number
	FCC	762235

3.6. Environmental conditions

During the measurement the environmental conditions were within the listed ranges:

Ambient temperature	18 °C to 25 °C
Ambient humidity	30%RH to 70%RH
Air Pressure	950-1050mbar

4. Equipments Used during the Test

Used	Test Equipment	Manufacturer	Equipment No.	Model No.	Serial No.	Cal. date (YY-MM-DD)	Due date (YY-MM-DD)
●	Data Acquisition Electronics DAEx	SPEAG	HTWE0313-05	DAE4	1549	2025/04/21	2026/04/20
●	E-field Probe	SPEAG	HTWE0313-06	EX3DV4	7494	2024/11/11	2025/11/10
●	Phantoms	SPEAG	HTWE0313-12	ELI V8.0	2078	N/A	N/A
●	Head TSL	-	-	HSL450	-	N/A	N/A
●	Temperature & humidity	MIAO XIN	HTWE0319	TH20R-EX	-	2025/03/18	2026/03/17
Tissue-equivalent liquids Validation							
●	Dielectric Assessment Kit	SPEAG	HTWE0315-01	DAK-12	1130	N/A	N/A
●	Network analyzer	Keysight	HTWE0331	E5071C	MY46733048	2024/08/27	2025/08/26
●	Thermometer	LKM	HTWE0317	DTM3000	3693	2025/03/18	2026/03/17
System Validation							
●	System Validation Dipole	SPEAG	HTWE0314-02	D450V3	1102	2024/01/24	2027/01/23
●	Signal Generator	R&S	HTWE0276	SMB100A	114360	2025/03/13	2026/03/12
●	Power Viewer for Windows	R&S		N/A	N/A	N/A	N/A
●	Power sensor	R&S	HTWE0278	NRP18A	101010	2025/03/14	2026/03/13
●	Power sensor	R&S	HTWE0389	NRP18A	101386	2025/03/14	2026/03/13
●	Power Amplifier	BONN	HTWE0336	BLWA 0160-2M	1811887	2024/11/08	2025/11/07
●	Dual Directional Coupler	Mini-Circuits	HTWE0335	ZHDC-10-62-S+	F975001814	2024/11/08	2025/11/07
●	Attenuator	Mini-Circuits	HTWE0333	VAT-3W2+	1819	2024/11/08	2025/11/07
●	Attenuator	Mini-Circuits	HTWE0334	VAT-10W2+	1741	2024/11/08	2025/11/07

Note:

1. The Probe, Dipole and DAE calibration reference to the Appendix E and F.
2. Referring to KDB865664 D01, the dipole calibration interval can be extended to 3 years with justification. The dipole are also not physically damaged or repaired during the interval.

5. Measurement Uncertainty

Per KDB 865664 D01 SAR Measurement 100 MHz to 6 GHz, when the highest measured 1-g SAR within a frequency band is < 1.5 W/kg. The expanded SAR measurement uncertainty must be $\leq 30\%$, for a confidence interval of $k = 2$. If these conditions are met, extensive SAR measurement uncertainty analysis described in IEEE Std 1528-2013 is not required in SAR reports submitted for equipment approval.

Therefore, the measurement uncertainty is not required.

6. SAR Measurements System Configuration

6.1. SAR Measurement Set-up

The DASY5 system for performing compliance tests consists of the following items:

A standard high precision 6-axis robot (Stäubli RX family) with controller and software. An arm extension for accommodating the data acquisition electronics (DAE).

A dosimetric probe, i.e. an isotropic E-field probe optimized and calibrated for usage in tissue simulating liquid. The probe is equipped with an optical surface detector system.

A data acquisition electronic (DAE) which performs the signal amplification, signal multiplexing, AD-conversion, offset measurements, mechanical surface detection, collision detection, etc. The unit is battery powered with standard or rechargeable batteries. The signal is optically transmitted to the EOC.

A unit to operate the optical surface detector which is connected to the EOC.

The Electro-Optical Coupler (EOC) performs the conversion from the optical into a digital electric signal of the DAE. The EOC is connected to the DASY5 measurement server.

The DASY5 measurement server, which performs all real-time data evaluation for field measurements and surface detection, controls robot movements and handles safety operation. A computer operating Windows 2003.

DASY5 software and SEMCAD data evaluation software.

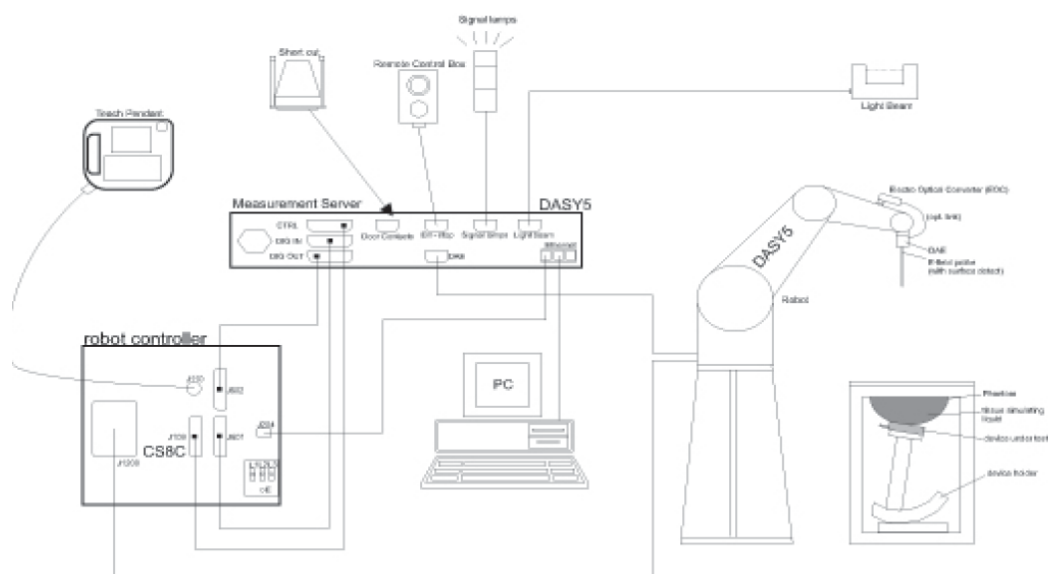
Remote control with teach panel and additional circuitry for robot safety such as warning lamps, etc.

The generic twin phantom enabling the testing of left-hand and right-hand usage.

The device holder for handheld Mobile Phones.

Tissue simulating liquid mixed according to the given recipes.

System validation dipoles allowing to validate the proper functioning of the system.



6.2. DASY5 E-field Probe System

The SAR measurements were conducted with the dosimetric probe EX3DV4 (manufactured by SPEAG), designed in the classical triangular configuration and optimized for dosimetric evaluation.

● Probe Specification

Construction Symmetrical design with triangular core

Interleaved sensors

Built-in shielding against static charges

PEEK enclosure material (resistant to organic solvents, e.g., DGBE)

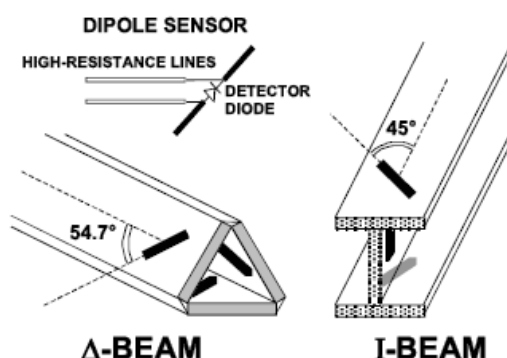
Calibration ISO/IEC 17025 calibration service available.

Frequency	10 MHz to 10 GHz; Linearity: ± 0.2 dB (30 MHz to 10 GHz)
Directivity	± 0.1 dB in TSL (rotation around probe axis) ± 0.3 dB in TSL (rotation normal to probe axis)
Dynamic Range	10 μ W/g to > 100 mW/g; Linearity: ± 0.2 dB
Dimensions	Overall length: 337 mm (Tip: 20 mm) Tip diameter: 2.5 mm (Body: 12 mm) Distance from probe tip to dipole centers: 2.0 mm
Application	General dosimetry up to 10 GHz Dosimetry in strong gradient fields Compliance tests of Mobile Phones
Compatibility	DASY3, DASY4, DASY52 SAR and higher, EASY4/MRI

● Isotropic E-Field Probe

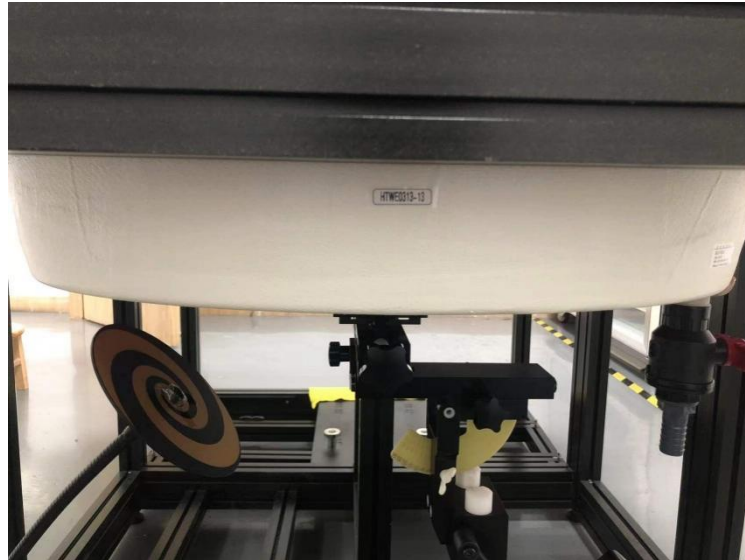
The isotropic E-Field probe has been fully calibrated and assessed for isotropicity, and boundary effect within a controlled environment. Depending on the frequency for which the probe is calibrated the method utilized for calibration will change.

The E-Field probe utilizes a triangular sensor arrangement as detailed in the diagram below:



6.3. Phantoms

Phantom for compliance testing of handheld and body-mounted wireless devices in the frequency range of 30 MHz to 6 GHz. ELI is fully compatible with standard and all known tissue-simulating liquids. ELI has been optimized regarding its performance and can be integrated into our standard phantom tables. A cover prevents evaporation of the liquid. Reference markings on the phantom allow installation of the complete setup, including all predefined phantom positions and measurement grids, by teaching three points. The phantom is compatible with all SPEAG dosimetric probes and dipoles.



ELI4 Phantom

6.4. Device Holder

The device was placed in the device holder (illustrated below) that is supplied by SPEAG as an integral part of the DASY system.

The DASY device holder is designed to cope with the different positions given in the standard. It has two scales for device rotation (with respect to the body axis) and device inclination (with respect to the line between the ear reference points). The rotation centers for both scales is the ear reference point (ERP). Thus the device needs no repositioning when changing the angles.



Device holder supplied by SPEAG

7. SAR Test Procedure

7.1. Scanning Procedure

Step 1: Power Reference Measurement

The Power Reference Measurement and Power Drift Measurements are for monitoring the power drift of the device under test in the batch process. Measure the local SAR at a test point within 8 mm of the phantom inner surface that is closest to the DUT. This distance cannot be smaller than the distance of sensor calibration points to probe tip as defined in the probe properties.

Step 2: Area Scan

The Area Scan is used as a fast scan in two dimensions to find the area of high field values, before doing a fine measurement around the hot spot. The sophisticated interpolation routines implemented in DASY software can find the maximum locations even in relatively coarse grids. When an Area Scan has measured all reachable points, it computes the field maximal found in the scanned area, within a range of the global maximum. The range (in dB) is specified in the standards for compliance testing. For example, a 2 dB range is required in IEEE Standard 1528 and IEC 62209 standards, whereby 3 dB is a requirement when compliance is assessed in accordance with the ARIB standard (Japan). If only one Zoom Scan follows the Area Scan, then only the absolute maximum will be taken as reference. For cases where multiple maximums are detected, the number of Zoom Scans has to be increased accordingly.

Area Scan Resolutions per FCC KDB Publication 865664 D01v04

	≤ 3 GHz	> 3 GHz
Maximum distance from closest measurement point (geometric center of probe sensors) to phantom surface	5 mm \pm 1 mm	$\frac{1}{2} \cdot \delta \cdot \ln(2)$ mm \pm 0.5 mm
Maximum probe angle from probe axis to phantom surface normal at the measurement location	$30^\circ \pm 1^\circ$	$20^\circ \pm 1^\circ$
Maximum area scan spatial resolution: Δx_{Area} , Δy_{Area}	≤ 2 GHz: ≤ 15 mm $2 - 3$ GHz: ≤ 12 mm	$3 - 4$ GHz: ≤ 12 mm $4 - 6$ GHz: ≤ 10 mm
	When the x or y dimension of the test device, in the measurement plane orientation, is smaller than the above, the measurement resolution must be \leq the corresponding x or y dimension of the test device with at least one measurement point on the test device.	

Step 3: Zoom Scan

Zoom Scans are used to assess the peak spatial SAR values within a cubic averaging volume containing 1g and 10g of simulated tissue. The Zoom Scan measures points (refer to table below) within a cube whose base faces are centered on the maxima found in a preceding area scan job within the same procedure. When the measurement is done, the Zoom Scan evaluates the averaged SAR for 1 g and 10 g and displays these values next to the job's label.

Zoom Scan Resolutions per FCC KDB Publication 865664 D01v04

Maximum zoom scan spatial resolution: $\Delta x_{\text{Zoom}}, \Delta y_{\text{Zoom}}$			$\leq 2 \text{ GHz}: \leq 8 \text{ mm}$ $2 - 3 \text{ GHz}: \leq 5 \text{ mm}^*$	$3 - 4 \text{ GHz}: \leq 5 \text{ mm}^*$ $4 - 6 \text{ GHz}: \leq 4 \text{ mm}^*$
Maximum zoom scan spatial resolution, normal to phantom surface	uniform grid: $\Delta z_{\text{Zoom}}(n)$		$\leq 5 \text{ mm}$	$3 - 4 \text{ GHz}: \leq 4 \text{ mm}$ $4 - 5 \text{ GHz}: \leq 3 \text{ mm}$ $5 - 6 \text{ GHz}: \leq 2 \text{ mm}$
	graded grid	$\Delta z_{\text{Zoom}}(1)$: between 1 st two points closest to phantom surface	$\leq 4 \text{ mm}$	$3 - 4 \text{ GHz}: \leq 3 \text{ mm}$ $4 - 5 \text{ GHz}: \leq 2.5 \text{ mm}$ $5 - 6 \text{ GHz}: \leq 2 \text{ mm}$
		$\Delta z_{\text{Zoom}}(n>1)$: between subsequent points	$\leq 1.5 \cdot \Delta z_{\text{Zoom}}(n-1) \text{ mm}$	
Minimum zoom scan volume	x, y, z		$\geq 30 \text{ mm}$	$3 - 4 \text{ GHz}: \geq 28 \text{ mm}$ $4 - 5 \text{ GHz}: \geq 25 \text{ mm}$ $5 - 6 \text{ GHz}: \geq 22 \text{ mm}$

Note: δ is the penetration depth of a plane-wave at normal incidence to the tissue medium; see IEEE Std 1528-2013 for details.

* When zoom scan is required and the reported SAR from the *area scan based 1-g SAR estimation* procedures of KDB Publication 447498 is $\leq 1.4 \text{ W/kg}$, $\leq 8 \text{ mm}$, $\leq 7 \text{ mm}$ and $\leq 5 \text{ mm}$ zoom scan resolution may be applied, respectively, for 2 GHz to 3 GHz, 3 GHz to 4 GHz and 4 GHz to 6 GHz.

Step 4: Power drift measurement

The Power Drift Measurement measures the field at the same location as the most recent power reference measurement within the same procedure, and with the same settings. The Power Drift Measurement gives the field difference in dB from the reading conducted within the last Power Reference Measurement. This allows a user to monitor the power drift of the device under test within a batch process. The measurement procedure is the same as Step 1. The SAR drift shall be kept within $\pm 5 \%$.

7.2. Data Storage and Evaluation

Data Storage

The DASY5 software stores the acquired data from the data acquisition electronics as raw data (in microvolt readings from the probe sensors), together with all necessary software parameters for the data evaluation (probe calibration data, liquid parameters and device frequency and modulation data) in measurement files with the extension “.DA4”. The software evaluates the desired unit and format for output each time the data is visualized or exported. This allows verification of the complete software setup even after the measurement and allows correction of incorrect parameter settings. For example, if a measurement has been performed with a wrong crest factor parameter in the device setup, the parameter can be corrected afterwards and the data can be re-evaluated.

The measured data can be visualized or exported in different units or formats, depending on the selected probe type ([V/m], [A/m], [°C], [mW/g], [mW/cm²], [dBrel], etc.). Some of these units are not available in certain situations or show meaningless results, e.g., a SAR output in a lossless media will always be zero. Raw data can also be exported to perform the evaluation with other software packages.

Data Evaluation

The SEMCAD software automatically executes the following procedures to calculate the field units from the microvolt readings at the probe connector. The parameters used in the evaluation are stored in the configuration modules of the software:

Probe parameters:	Sensitivity:	Normi, ai0, ai1, ai2
	Conversion factor:	ConvFi
	Diode compression point:	Dcpi
Device parameters:	Frequency:	f
	Crest factor:	cf
Media parameters:	Conductivity:	σ
	Density:	ρ

These parameters must be set correctly in the software. They can be found in the component documents or they can be imported into the software from the configuration files issued for the DASY5 components. In the direct measuring mode of the multimeter option, the parameters of the actual system setup are used. In the scan visualization and export modes, the parameters stored in the corresponding document files are used.

The first step of the evaluation is a linearization of the filtered input signal to account for the compression characteristics of the detector diode. The compensation depends on the input signal, the diode type and the DC-transmission factor from the diode to the evaluation electronics. If the exciting field is pulsed, the crest factor of the signal must be known to correctly compensate for peak power. The formula for each channel can be given as:

$$V_i = U_i + U_i^2 \cdot \frac{cf}{dcp_i}$$

Vi:	compensated signal of channel (i = x, y, z)
Ui:	input signal of channel (i = x, y, z)
cf:	crest factor of exciting field (DASY parameter)
dcp _i :	diode compression point (DASY parameter)

From the compensated input signals the primary field data for each channel can be evaluated:

$$\text{E – fieldprobes : } E_i = \sqrt{\frac{V_i}{Norm_i \cdot ConvF}}$$

$$\text{H – fieldprobes : } H_i = \sqrt{V_i} \cdot \frac{a_{i0} + a_{i1}f + a_{i2}f^2}{f}$$

Vi:	compensated signal of channel (i = x, y, z)
Normi:	sensor sensitivity of channel (i = x, y, z), [mV/(V/m)²] for E-field Probes
ConvF:	sensitivity enhancement in solution
aij:	sensor sensitivity factors for H-field probes
f:	carrier frequency [GHz]
Ei:	electric field strength of channel i in V/m
Hi:	magnetic field strength of channel i in A/m

The RSS value of the field components gives the total field strength (Hermitian magnitude):

$$E_{tot} = \sqrt{E_x^2 + E_y^2 + E_z^2}$$

The primary field data are used to calculate the derived field units.

$$SAR = E_{tot}^2 \cdot \frac{\sigma}{\rho \cdot 1'000}$$

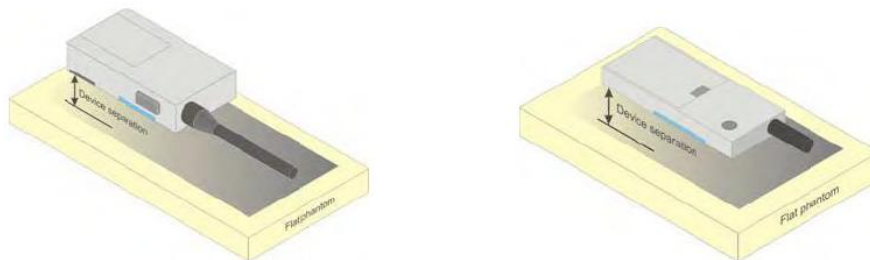
SAR: local specific absorption rate in mW/g
Etot: total field strength in V/m
 σ : conductivity in [mho/m] or [Siemens/m]
 ρ : equivalent tissue density in g/cm³

Note that the density is normally set to 1 (or 1.06), to account for actual brain density rather than the density of the simulation liquid.

8. Position of the wireless device in relation to the phantom

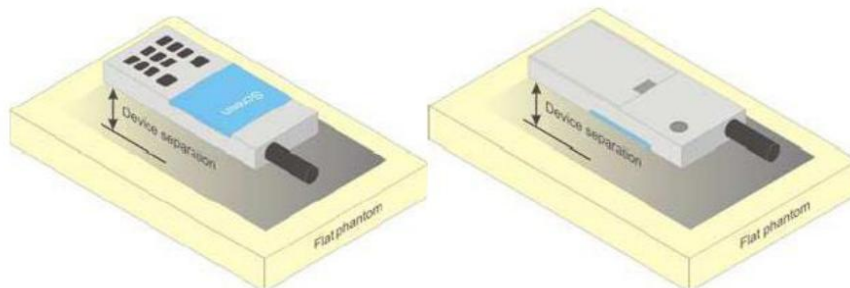
8.1. Front-of-face

A typical example of a front-of-face device is a two-way radio that is held at a distance from the face of the user when transmitting. In these cases the device under test shall be positioned at the distance to the phantom surface that corresponds to the intended use as specified by the manufacturer in the user instructions. If the intended use is not specified, a separation distance of 25 mm between the phantom surface and the device shall be used.



8.2. Body Position

A typical example of a body-worn device is a mobile phone, wireless enabled PDA or other battery operated wireless device with the ability to transmit while mounted on a person's body using a carry accessory approved by the wireless device manufacturer.



9. Dielectric Property Measurements & System Check

9.1. Tissue Dielectric Parameters

The temperature of the tissue-equivalent medium used during measurement must also be within 18°C to 25°C and within $\pm 2^\circ\text{C}$ of the temperature when the tissue parameters are characterized.

The dielectric parameters must be measured before the tissue-equivalent medium is used in a series of SAR measurements. The parameters should be re-measured after each 3-4 days of use; or earlier if the dielectric parameters can become out of tolerance; for example, when the parameters are marginal at the beginning of the measurement series.

The dielectric constant (ϵ_r) and conductivity (σ) of typical tissue-equivalent media recipes are expected to be within $\pm 5\%$ of the required target values; but for SAR measurement systems that have implemented the SAR error compensation algorithms documented in IEEE Std 1528-2013, to automatically compensate the measured SAR results for deviations between the measured and required tissue dielectric parameters, the tolerance for ϵ_r and σ may be relaxed to $\pm 10\%$. This is limited to frequencies ≤ 3 GHz.

Tissue Dielectric Parameters

FCC KDB 865664 D01 SAR Measurement 100 MHz to 6 GHz

Tissue dielectric parameters		
Target Frequency (MHz)	Head	
	ϵ_r	$\sigma(\text{S/m})$
450	43.5	0.87

IEEE Std 1528-2013

Refer to Table 3 within the IEEE Std 1528-2013

Measurement Results:

Dielectric performance of tissue simulating liquid									
Frequency (MHz)	ϵ_r		$\sigma(\text{S/m})$		Delta (ϵ_r)	Delta (σ)	Limit	Temp ($^\circ\text{C}$)	Date
	Target	Measured	Target	Measured					
450	43.50	43.13	0.870	0.863	-0.85%	-0.80%	$\pm 5\%$	22.2	2025/5/8

9.2. SAR System Validation

Per FCC KDB 865664 D02, SAR system validation status should be documented to confirm measurement accuracy. The SAR systems (including SAR probes, system components and software versions) used for this device were validated against its performance specifications prior to the SAR measurements. Reference dipoles were used with the required tissue-equivalent media for system validation, according to the procedures outlined in FCC KDB 865664 D01 and IEEE 1528-2013. Since SAR probe calibrations are frequency dependent, each probe calibration point, using the system that normally operates with the probe for routine SAR measurements and according to the required tissue-equivalent media.

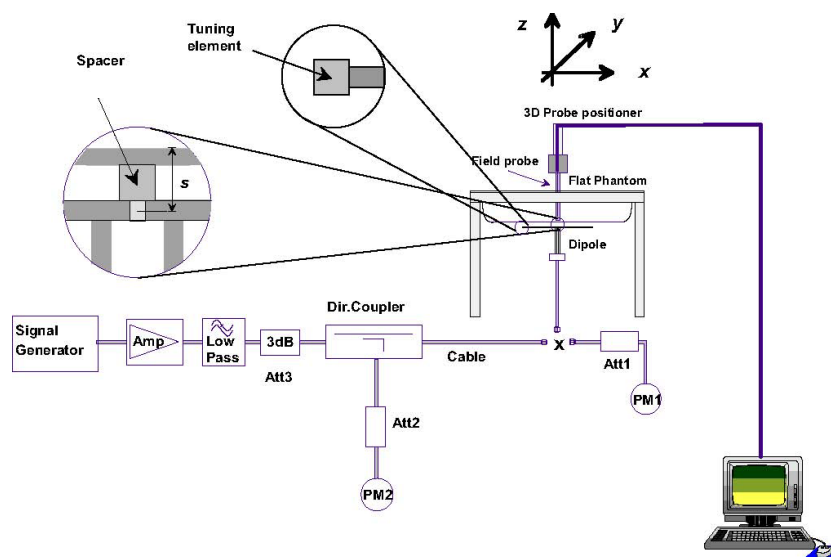
A tabulated summary of the system validation status including the validation date(s), measurement frequencies, SAR probes and tissue dielectric parameters has been included.

9.3. System Check

SAR system verification is required to confirm measurement accuracy, according to the tissue dielectric media, probe calibration points and other system operating parameters required for measuring the SAR of a test device. The system verification must be performed for each frequency band and within the valid range of each probe calibration point required for testing the device. The same SAR probe(s) and tissue-equivalent media combinations used with each specific SAR system for system verification must be used for device testing. When multiple probe calibration points are required to cover substantially large transmission bands, independent system verifications are required for each probe calibration point. A system verification must be performed before each series of SAR measurements using the same probe calibration point and tissue-equivalent medium. Additional system verification should be considered according to the conditions of the tissue-equivalent medium and measured tissue dielectric parameters, typically every three to four days when the liquid parameters are re-measured or sooner when marginal liquid parameters are used at the beginning of a series of measurements.

System Performance Check Measurement Conditions:

- The measurements were performed in the flat section of the TWIN SAM or ELI phantom, shell thickness: 2.0 ± 0.2 mm (bottom plate) filled with Body or Head simulating liquid of the following parameters.
- The depth of tissue-equivalent liquid in a phantom must be ≥ 15.0 cm for SAR measurements ≤ 3 GHz and ≥ 10.0 cm for measurements > 3 GHz.
- The DASY system with an E-Field Probe was used for the measurements.
- The dipole was mounted on the small tripod so that the dipole feed point was positioned below the center marking of the flat phantom section and the dipole was oriented parallel to the body axis (the long side of the phantom). The standard measuring distance was 10 mm (above 1 GHz) and 15 mm (below 1 GHz) from dipole center to the simulating liquid surface.
- The coarse grid with a grid spacing of 15 mm was aligned with the dipole.
For 5 GHz band - The coarse grid with a grid spacing of 10 mm was aligned with the dipole.
- Special 7x7x7 (below 3 GHz) and/or 8x8x7 (above 3 GHz) fine cube was chosen for the cube.
- The results are normalized to 1 W input power.



System Performance Check Setup



Photo of Dipole Setup

Measurement Results:

SAR System Check Result											
Frequency (MHz)	1g SAR			10g SAR			Delta (1g)	Delta (10g)	Limit	Temp (°C)	Date
	Target 1W	Normalize to 1W	Measured 250mW	Target 1W	Normalize to 1W	Measured 250mW					
450	4.61	4.44	1.11	3.08	2.94	0.734	-3.69%	-4.68%	±10%	23.1	2025/5/8

Note:

The 1-g and 10-g SAR measured with a reference dipole, using the required tissue-equivalent medium at the test frequency, must be within ±10% of the manufacturer calibrated dipole SAR target.

Plots of System Performance Check

Test Laboratory: Huatongwei International Inspection Co., Ltd., SAR Lab

Date: 5/8/2025

SystemPerformanceCheck-Head 450MHz

Communication System: UID 0, A-CW (0); Frequency: 450 MHz; Duty Cycle: 1:1

Medium parameters used: $f = 450 \text{ MHz}$; $\sigma = 0.863 \text{ S/m}$; $\epsilon_r = 43.132$; $\rho = 1000 \text{ kg/m}^3$

Phantom section: Flat Section

Ambient Temperature: 23.1°C; Liquid Temperature: 22.2°C

DASY Configuration:

- Probe: EX3DV4 - SN7494; ConvF(11.32, 11.32, 11.32) @ 450 MHz; Calibrated: 11/11/2024
- Sensor-Surface: 1.4mm (Mechanical Surface Detection)
- Electronics: DAE4 Sn1549; Calibrated: 4/21/2025
- Phantom: ELI V8.0 ; Type: QD OVA 004 AA ; Serial: 2078
- DASY52 52.10.4(1535); SEMCAD X 14.6.14(7501)

Head/d=15mm, Pin=250mW/Area Scan (6x11x1): Measurement grid: dx=15mm, dy=15mm
 Maximum value of SAR (measured) = 1.27 W/kg

Head/d=15mm, Pin=250mW/Zoom Scan (5x5x7)/Cube 0: Measurement grid: dx=8mm, dy=8mm, dz=5mm

Reference Value = 37.29 V/m; Power Drift = -0.11 dB

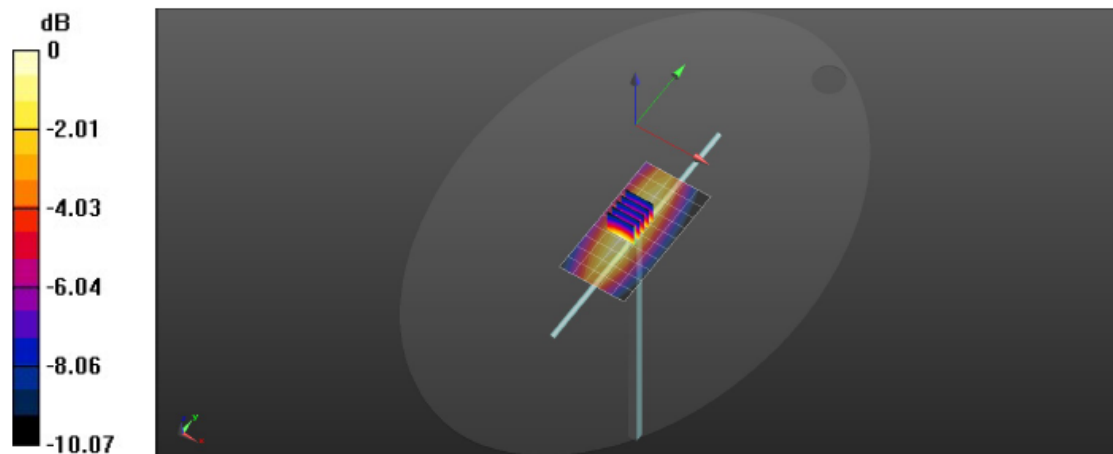
Peak SAR (extrapolated) = 1.46 W/kg

SAR(1 g) = 1.11 W/kg; SAR(10 g) = 0.734 W/kg

Smallest distance from peaks to all points 3 dB below: Larger than measurement grid (> 16 mm)

Ratio of SAR at M2 to SAR at M1 = 63.1%

Maximum value of SAR (measured) = 1.26 W/kg



0 dB = 1.26 W/kg = 1.00 dBW/kg

10. SAR Exposure Limits

SAR assessments have been made in line with the requirements of FCC 47 CFR § 2.1093.

Type Exposure	Limit (W/kg)	
	General Population / Uncontrolled Exposure Environment	Occupational / Controlled Exposure Environment
Spatial Average SAR (whole body)	0.08	0.4
Spatial Peak SAR (1g cube tissue for head and trunk)	1.6	8.0
Spatial Peak SAR (10g for limb)	4.0	20.0

Population/Uncontrolled Environments: are defined as locations where there is the exposure of individual who have no knowledge or control of their exposure.

Occupational/Controlled Environments: are defined as locations where there is exposure that may be incurred by people who are aware of the potential for exposure (i.e. as a result of employment or occupation).

11. Radiated Power Measurement Results and Tune-up

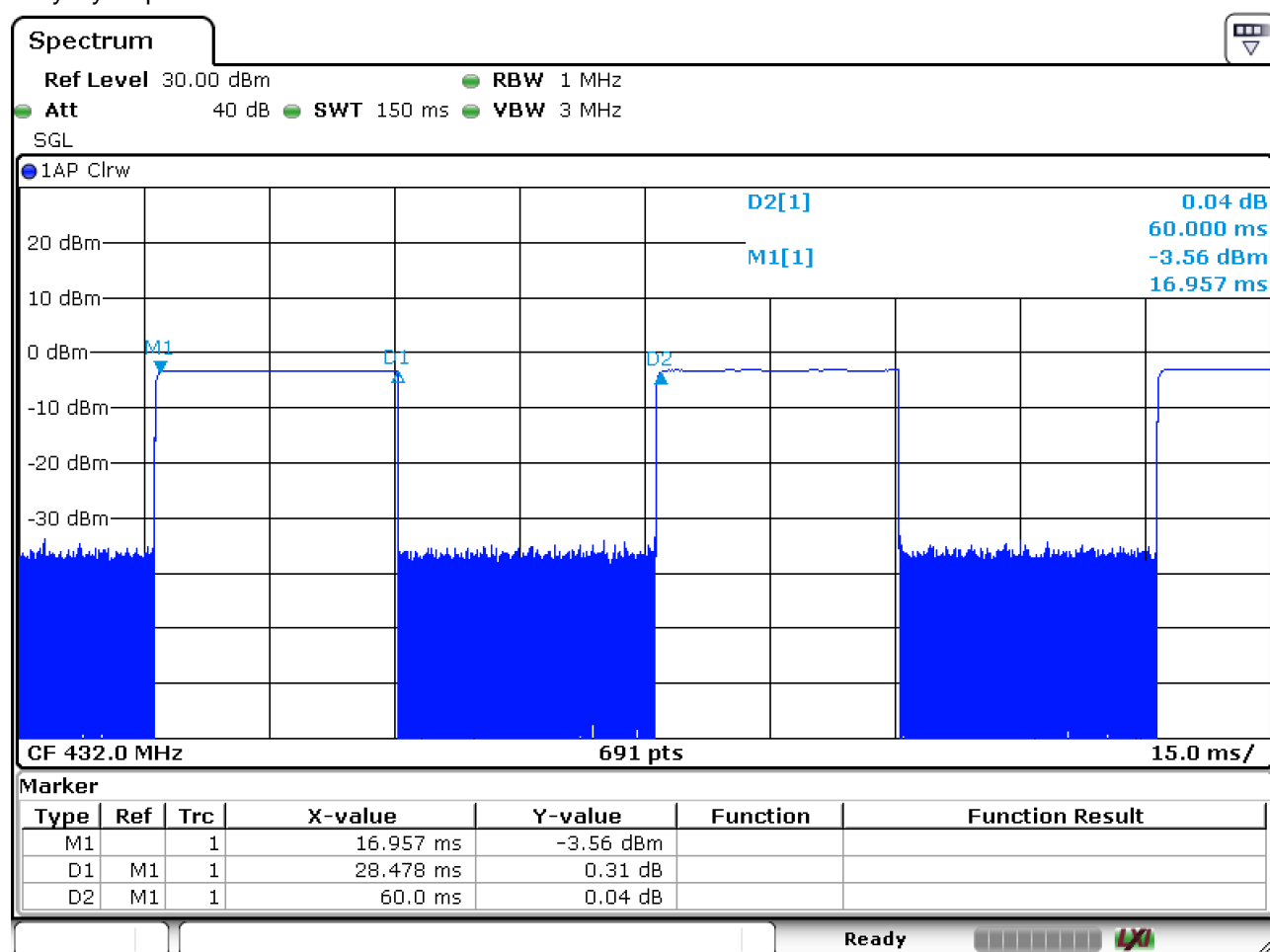
This device operates using the following maximum output power specifications. SAR values were scaled to the maximum allowed power to determine compliance per KDB publication 447498 D04

Please refer to appendix report

Duty Factor Measured Results

Mode	Type	T on (ms)	Period (ms)	Duty Cycle	Crest Factor (1/duty cycle)
Digital	4FSK	28.48	60.00	47.47%	2.107

Duty Cycle plot



Date: 8.MAY.2025 11:04:19

12. SAR Measurement Results

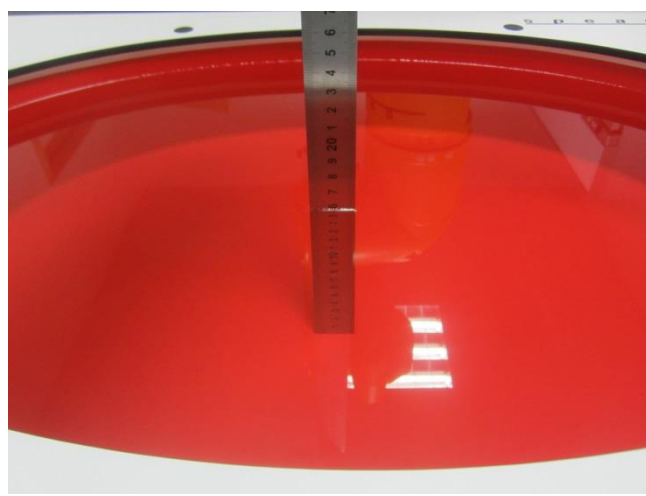
Please refer to appendix report

SAR Test Data Plots to the Appendix D.

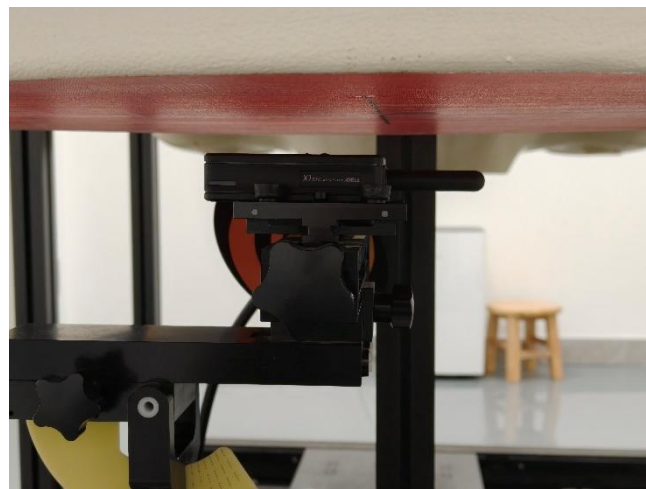
Note:

- 1. The distance of the front-of-face test is 25mm, the distance of the Body-worn test is 0mm.*
- 2. Batteries are fully charged at the beginning of the SAR measurements.*
- 3. The Body-worn SAR evaluation was performed with the Leather Case body-worn accessory attached to the DUT and touching the outer surface of the planar phantom.*

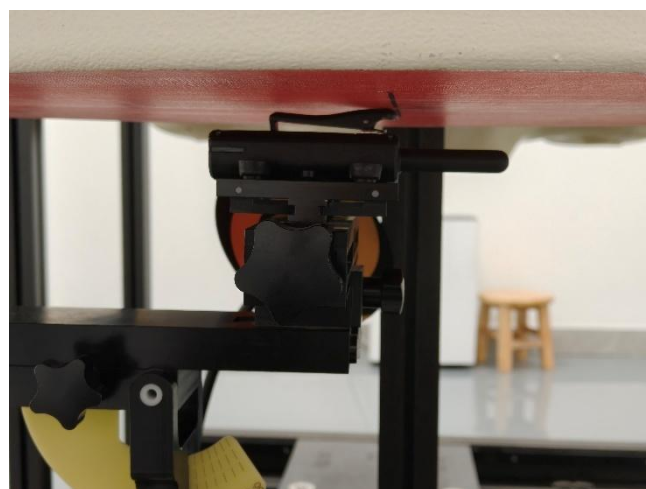
13. Test Setup Photos



Liquid depth in the ELI Phantom



Front-of-face(25mm)



Body-worn(0mm)

14. External and Internal Photos of the EUT

Please refer to the test report No.: CHTW25050056

--- End of Report ---

Project No.	SHT2504052401W		
Test sample No.	YPHT25040524001	Model No.	X1 pro
Start test date	2025/5/8	Finish date	2025/5/8
Temperature	23.1°C	Humidity	51.30%
Test Engineer	Jiaxing Si	Auditor	<i>Xiaodong Zhao</i>

Appendix clause	Test Item	Result
A	ERP Measurement Results	PASS
B	SAR Measurement Results	PASS

Appendix A:ERP Measurement Results

Power					
Mode	Channel Separation	Frequency		ERP (dBm)	Tune up limit (dBm)
		Channel	MHz		
Analog	12.5kHz	CH1	400.0125	32.06	32.50
		CH2	416.0000	31.81	32.50
		CH3	432.0000	32.07	32.50
		CH4	448.0000	31.40	32.50
		CH5	464.0000	30.96	32.50
		CH6	479.9875	31.13	32.50
Digital	12.5kHz	CH1	400.0125	31.80	32.50
		CH2	416.0000	31.50	32.50
		CH3	432.0000	31.80	32.50
		CH4	448.0000	31.20	32.50
		CH5	464.0000	31.60	32.50
		CH6	479.9875	31.60	32.50

Appendix B:SAR Measurement Results

Front-of-face											
Mode	Channel Separation	Frequency		ERP (dBm)	Tune up limit (dBm)	Tune up scaling factor	Power Drift (dB)	Measured SAR(1g)	Report SAR(1g)	50% Duty SAR(1g)	Plot No.
		CH	MHz					(W/kg)	(W/kg)	(W/kg)	
Analog	12.5kHz	CH1	400.0125	32.06	32.50	1.107	-	-	-	-	-
		CH2	416.0000	31.81	32.50	1.172	-	-	-	-	-
		CH3	432.0000	32.07	32.50	1.104	-0.05	1.620	1.789	0.894	1
		CH4	448.0000	31.40	32.50	1.288	-	-	-	-	-
		CH5	464.0000	30.96	32.50	1.426	-	-	-	-	-
		CH6	479.9875	31.13	32.50	1.371	-	-	-	-	-
Digital	12.5kHz	CH1	400.0125	31.80	32.50	1.175	-	-	-	-	-
		CH2	416.0000	31.50	32.50	1.259	-	-	-	-	-
		CH3	432.0000	31.80	32.50	1.175	0.13	0.759	0.892	0.446	2
		CH4	448.0000	31.20	32.50	1.349	-	-	-	-	-
		CH5	464.0000	31.60	32.50	1.230	-	-	-	-	-
		CH6	479.9875	31.60	32.50	1.230	-	-	-	-	-

Body-worn											
Mode	Channel Separation	Frequency		ERP (dBm)	Tune up limit (dBm)	Tune up scaling factor	Power Drift (dB)	Measured SAR(1g)	Report SAR(1g)	50% Duty SAR(1g)	Plot No.
		CH	MHz					(W/kg)	(W/kg)	(W/kg)	
Analog	12.5kHz	CH1	400.0125	32.06	32.50	1.107	-	-	-	-	-
		CH2	416.0000	31.81	32.50	1.172	-	-	-	-	-
		CH3	432.0000	32.07	32.50	1.104	-0.09	2.860	3.158	1.579	3
		CH4	448.0000	31.40	32.50	1.288	-	-	-	-	-
		CH5	464.0000	30.96	32.50	1.426	-	-	-	-	-
		CH6	479.9875	31.13	32.50	1.371	-	-	-	-	-
Digital	12.5kHz	CH1	400.0125	31.80	32.50	1.175	-	-	-	-	-
		CH2	416.0000	31.50	32.50	1.259	-	-	-	-	-
		CH3	432.0000	31.80	32.50	1.175	-0.16	1.430	1.680	0.840	4
		CH4	448.0000	31.20	32.50	1.349	-	-	-	-	-
		CH5	464.0000	31.60	32.50	1.230	-	-	-	-	-
		CH6	479.9875	31.60	32.50	1.230	-	-	-	-	-

Analog-12.5kHz Front-of-face

Communication System: UID 0, Analog (0); Frequency: 432 MHz; Duty Cycle: 1:1

Medium parameters used: $f = 432 \text{ MHz}$; $\sigma = 0.863 \text{ S/m}$; $\epsilon_r = 43.346$; $\rho = 1000 \text{ kg/m}^3$

Phantom section: Flat Section

Ambient Temperature: 23.1°C ; Liquid Temperature: 22.2°C

DASY Configuration:

- Probe: EX3DV4 - SN7494; ConvF(11.32, 11.32, 11.32) @ 432 MHz; Calibrated: 11/11/2024
- Sensor-Surface: 1.4mm (Mechanical Surface Detection)
- Electronics: DAE4 Sn1549; Calibrated: 4/21/2025
- Phantom: ELI V8.0 ; Type: QD OVA 004 AA ; Serial: 2078
- DASY52 52.10.4(1535); SEMCAD X 14.6.14(7501)

Front 25mm/CH3/Area Scan (6x12x1): Measurement grid: $dx=15\text{mm}$, $dy=15\text{mm}$

Maximum value of SAR (measured) = 2.20 W/kg

Front 25mm/CH3/Zoom Scan (5x5x7)/Cube 0: Measurement grid: $dx=8\text{mm}$, $dy=8\text{mm}$, $dz=5\text{mm}$

Reference Value = 50.72 V/m ; Power Drift = -0.05 dB

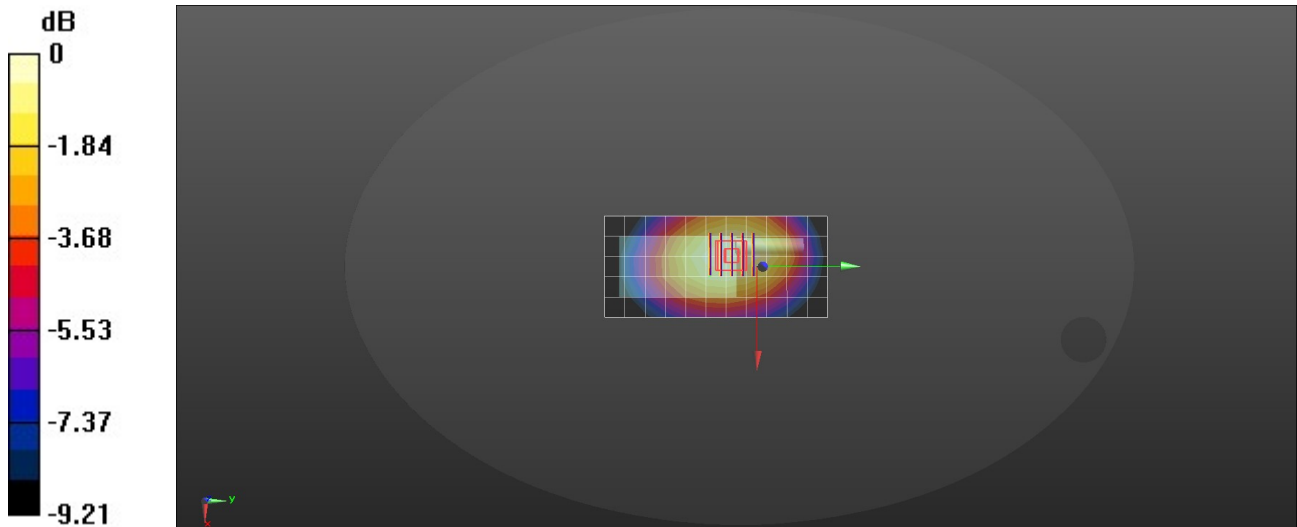
Peak SAR (extrapolated) = 2.59 W/kg

SAR(1 g) = 1.62 W/kg ; SAR(10 g) = 1.15 W/kg

Smallest distance from peaks to all points 3 dB below: Larger than measurement grid ($> 16 \text{ mm}$)

Ratio of SAR at M2 to SAR at M1 = 63.6%

Maximum value of SAR (measured) = 2.18 W/kg



0 dB = 2.18 W/kg = 3.38 dBW/kg

Digital-12.5kHz Front-of-face

Communication System: UID 0, Digital (0); Frequency: 432 MHz; Duty Cycle: 1:2.107

Medium parameters used: $f = 432$ MHz; $\sigma = 0.863$ S/m; $\epsilon_r = 43.346$; $\rho = 1000$ kg/m³

Phantom section: Flat Section

Ambient Temperature: 23.1°C; Liquid Temperature: 22.2°C

DASY Configuration:

- Probe: EX3DV4 - SN7494; ConvF(11.32, 11.32, 11.32) @ 432 MHz; Calibrated: 11/11/2024
- Sensor-Surface: 1.4mm (Mechanical Surface Detection)
- Electronics: DAE4 Sn1549; Calibrated: 4/21/2025
- Phantom: ELI V8.0 ; Type: QD OVA 004 AA ; Serial: 2078
- DASY52 52.10.4(1535); SEMCAD X 14.6.14(7501)

Front 25mm/CH3/Area Scan (6x12x1): Measurement grid: dx=15mm, dy=15mm

Maximum value of SAR (measured) = 1.01 W/kg

Front 25mm/CH3/Zoom Scan (5x5x7)/Cube 0: Measurement grid: dx=8mm, dy=8mm, dz=5mm

Reference Value = 34.01 V/m; Power Drift = 0.13 dB

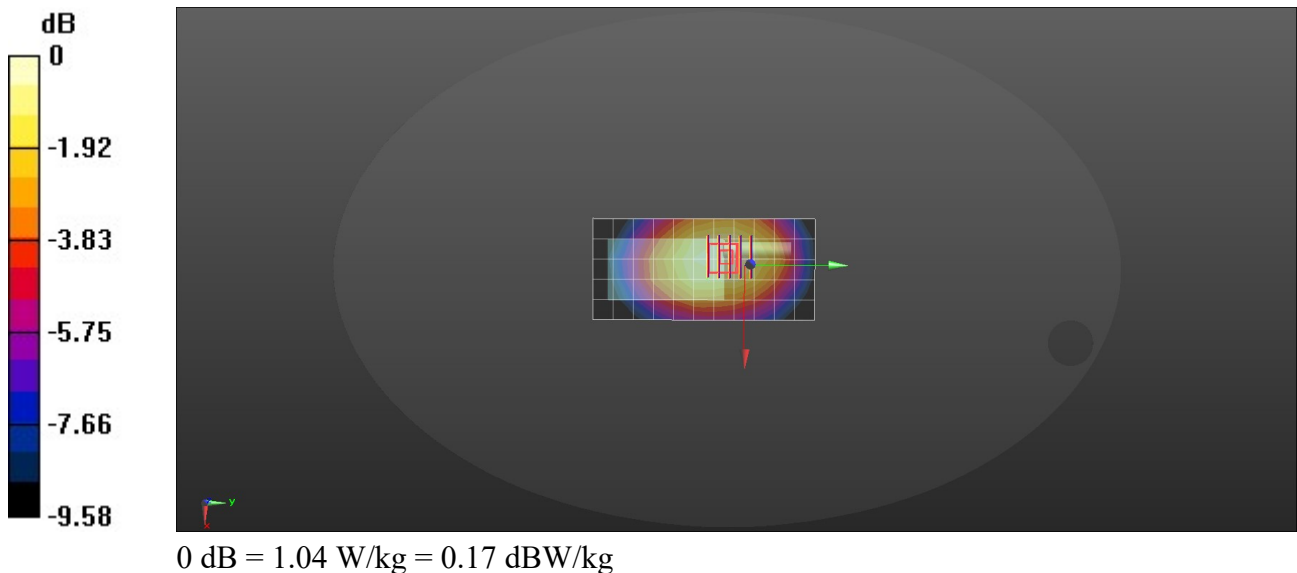
Peak SAR (extrapolated) = 1.24 W/kg

SAR(1 g) = 0.759 W/kg; SAR(10 g) = 0.544 W/kg

Smallest distance from peaks to all points 3 dB below: Larger than measurement grid (> 16 mm)

Ratio of SAR at M2 to SAR at M1 = 61.2%

Maximum value of SAR (measured) = 1.04 W/kg



Analog-12.5kHz Body-worn

Communication System: UID 0, Analog (0); Frequency: 432 MHz; Duty Cycle: 1:1

Medium parameters used: $f = 432$ MHz; $\sigma = 0.863$ S/m; $\epsilon_r = 43.346$; $\rho = 1000$ kg/m³

Phantom section: Flat Section

Ambient Temperature: 23.1°C; Liquid Temperature: 22.2°C

DASY Configuration:

- Probe: EX3DV4 - SN7494; ConvF(11.32, 11.32, 11.32) @ 432 MHz; Calibrated: 11/11/2024
- Sensor-Surface: 1.4mm (Mechanical Surface Detection)
- Electronics: DAE4 Sn1549; Calibrated: 4/21/2025
- Phantom: ELI V8.0 ; Type: QD OVA 004 AA ; Serial: 2078
- DASY52 52.10.4(1535); SEMCAD X 14.6.14(7501)

Rear 0mm/CH3/Area Scan (6x12x1): Measurement grid: dx=15mm, dy=15mm

Maximum value of SAR (measured) = 3.87 W/kg

Rear 0mm/CH3/Zoom Scan (5x5x7)/Cube 0: Measurement grid: dx=8mm, dy=8mm, dz=5mm

Reference Value = 67.55 V/m; Power Drift = -0.09 dB

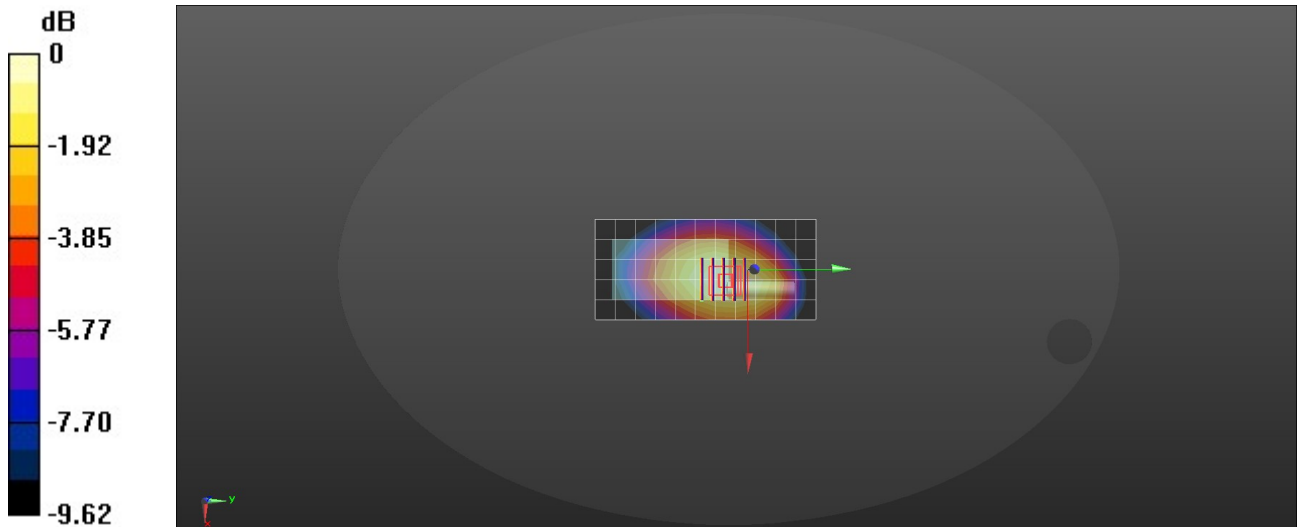
Peak SAR (extrapolated) = 4.47 W/kg

SAR(1 g) = 2.86 W/kg; SAR(10 g) = 1.99 W/kg

Smallest distance from peaks to all points 3 dB below: Larger than measurement grid (> 16 mm)

Ratio of SAR at M2 to SAR at M1 = 64.8%

Maximum value of SAR (measured) = 3.81 W/kg



0 dB = 3.81 W/kg = 5.81 dBW/kg

Digital-12.5kHz Body-worn

Communication System: UID 0, Digital (0); Frequency: 432 MHz; Duty Cycle: 1:2.107

Medium parameters used: $f = 432$ MHz; $\sigma = 0.863$ S/m; $\epsilon_r = 43.346$; $\rho = 1000$ kg/m³

Phantom section: Flat Section

Ambient Temperature: 23.1°C; Liquid Temperature: 22.2°C

DASY Configuration:

- Probe: EX3DV4 - SN7494; ConvF(11.32, 11.32, 11.32) @ 432 MHz; Calibrated: 11/11/2024
- Sensor-Surface: 1.4mm (Mechanical Surface Detection)
- Electronics: DAE4 Sn1549; Calibrated: 4/21/2025
- Phantom: ELI V8.0 ; Type: QD OVA 004 AA ; Serial: 2078
- DASY52 52.10.4(1535); SEMCAD X 14.6.14(7501)

Rear 0mm/CH3/Area Scan (6x12x1): Measurement grid: dx=15mm, dy=15mm

Maximum value of SAR (measured) = 1.97 W/kg

Rear 0mm/CH3/Zoom Scan (5x5x7)/Cube 0: Measurement grid: dx=8mm, dy=8mm, dz=5mm

Reference Value = 47.50 V/m; Power Drift = -0.16 dB

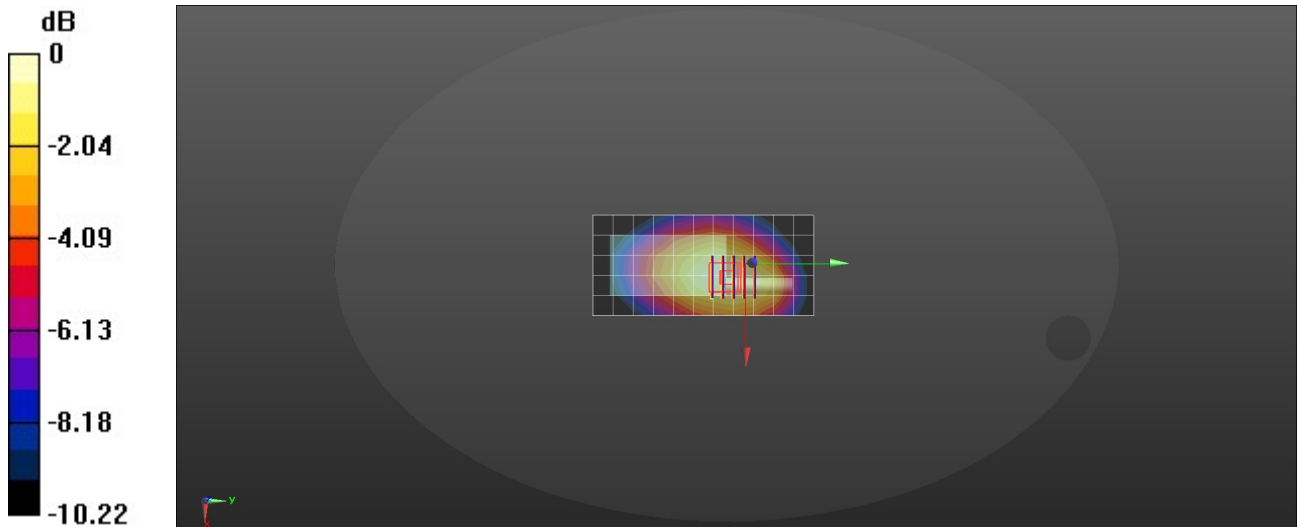
Peak SAR (extrapolated) = 2.23 W/kg

SAR(1 g) = 1.43 W/kg; SAR(10 g) = 0.993 W/kg

Smallest distance from peaks to all points 3 dB below: Larger than measurement grid (> 16 mm)

Ratio of SAR at M2 to SAR at M1 = 65.5%

Maximum value of SAR (measured) = 1.91 W/kg



0 dB = 1.91 W/kg = 2.81 dBW/kg