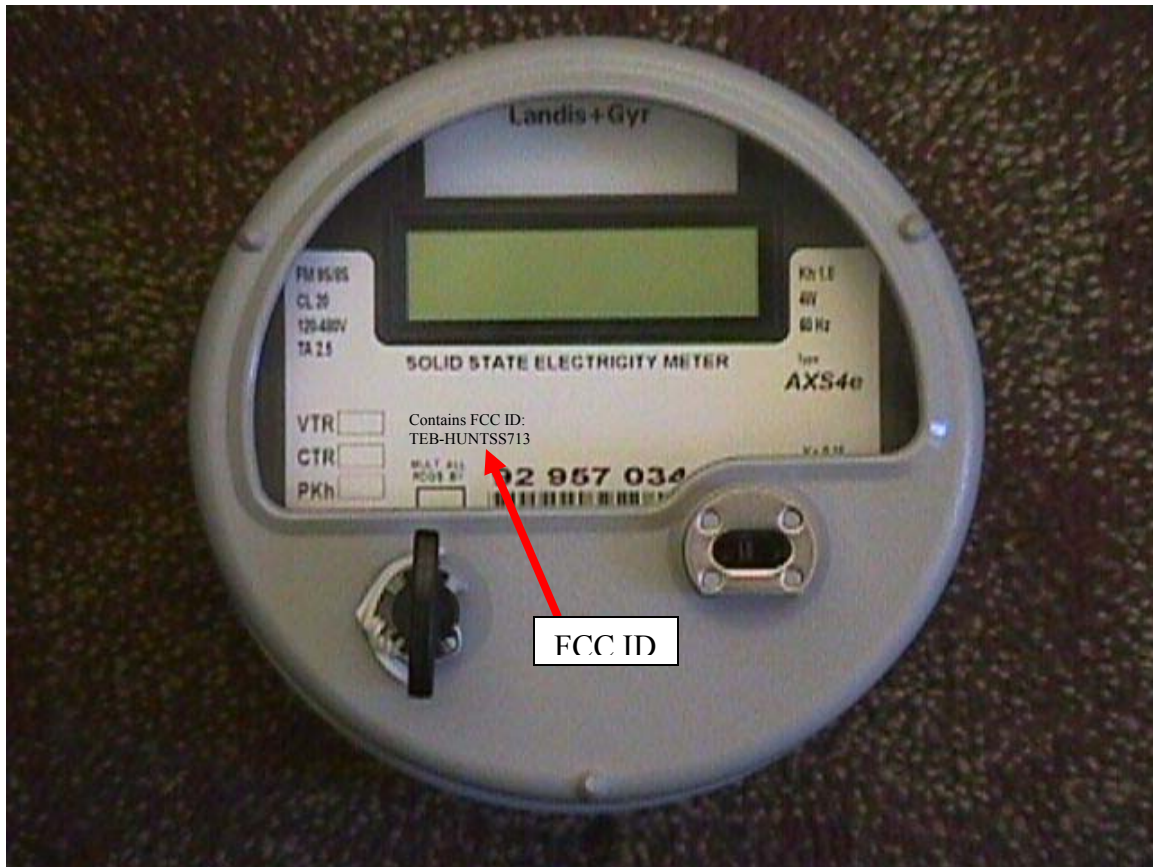


Front of Meter



The end use will not be able to see our STATSignal module, the only visual clue that there is an STATSignal product in the meter will be the label on the meter shell stating the unit's serial number and FCC ID of the STATSignal module located inside.

The label on the meter shell is produced by Landis + Gyr, and is a standard Watt-Hour meter label stating such things as: Meter ID, Class, Voltage, etc AND the verbiage "Contains FCC ID: TEB-HUNTSS713". The 15.19 requirements are provided in a "Ship-Sheet" that accompanies the product to the end user.