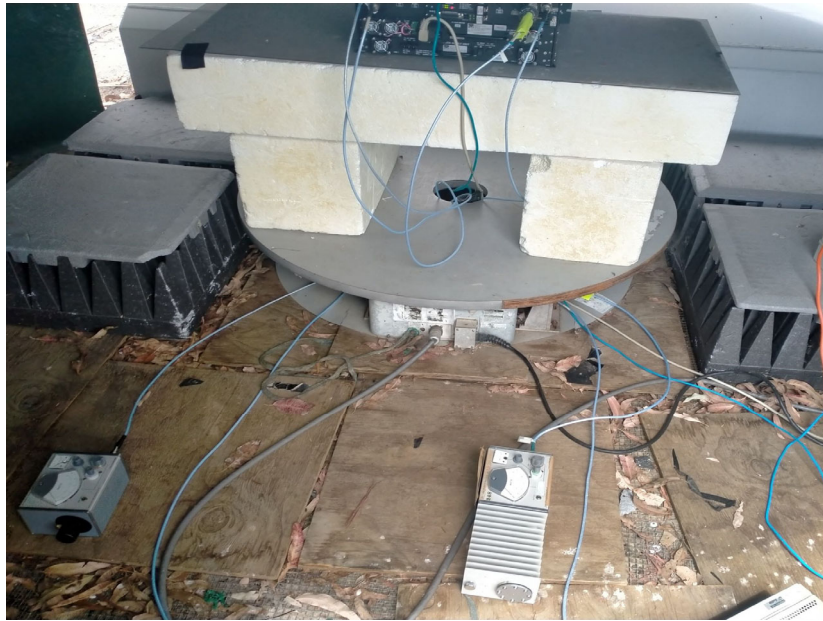


## Radiated Emissions Test Set Up

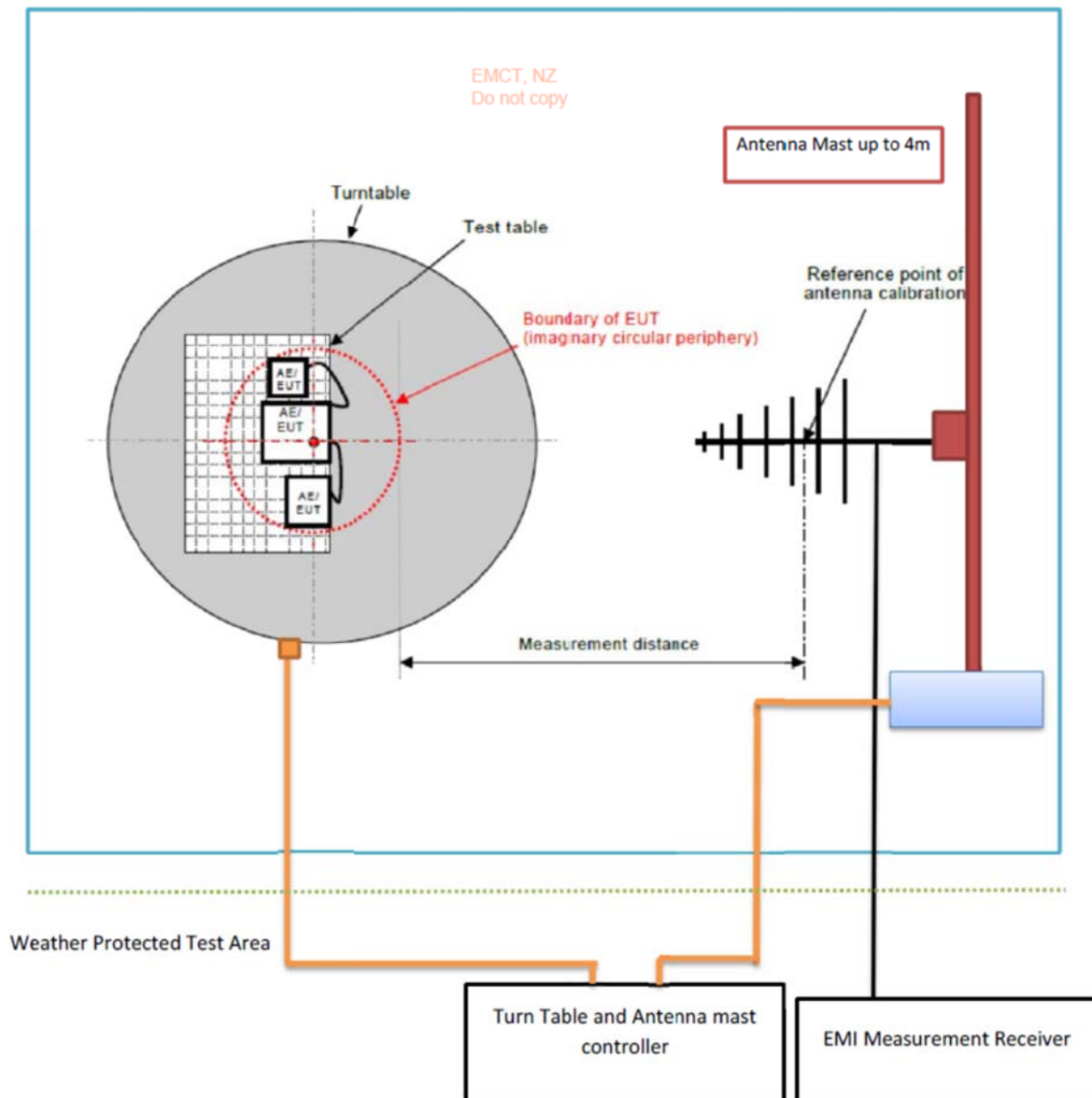








### Radiated Emissions Test setup at Open area test site



Below 30 MHz: Loop Antenna; Measurement distance: 10 m

30 MHz-300 MHz: Bi conical Antenna; Measurement distance: 3 m

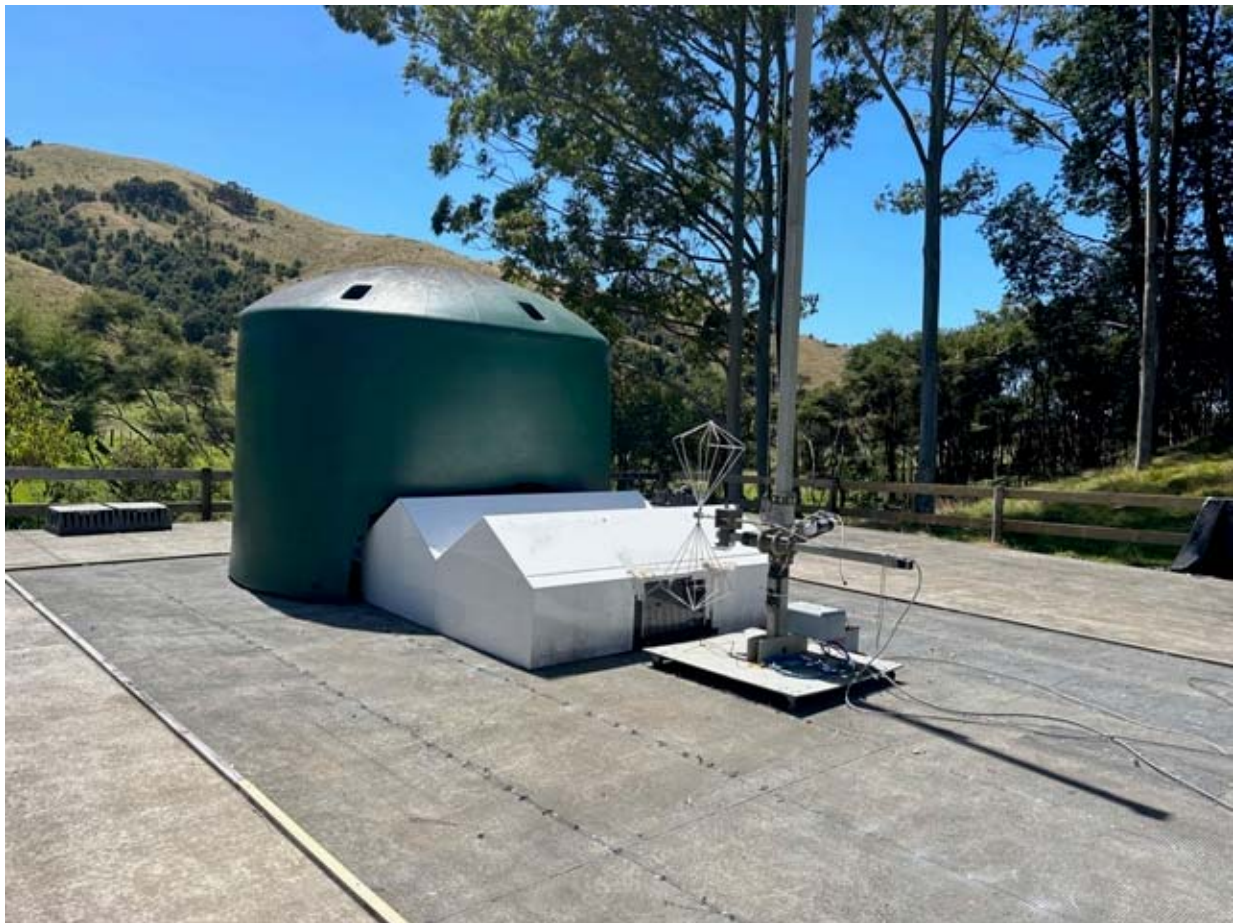
300 MHz- 1000 MHz: Log Periodic Antenna; Measurement distance: 3 m

Above 1 GHz: Horn Antenna; Measurement distance: 3 m

EMI Receiver Used: ESIB40



Biconical Antenna





Biconical Antenna



Log Periodic Antenna





Log Periodic Antenna





1 – 18 GHz Horn Antenna

