

## CARE

The following suggestions will help you enjoy your vehicle for years.

- Never drive the vehicle on a wet floor, on sand, or in mud, rain, or snow. These can damage it.
- Do not expose the vehicle to extreme temperature.
- Wipe the vehicle with a damp cloth occasionally to keep it looking new. Do not use harsh chemicals to clean the vehicle.

Modifying or tampering with the vehicle or the transmitter's internal components can cause a malfunction and void your FCC authorization to operate it.

## INDUSTRY CANADA NOTICE

This device complies with RSS-210 of Industry Canada. Operation is subject to the following two conditions: (1) this device may not cause interference, and (2) this device must accept any interference, including interference that may cause undesired operation of the device.

This digital apparatus does not exceed the Class B limits for radio noise emissions from digital apparatus set out in the Radio Interference Regulations of Industry Canada.

## THE FCC WANTS YOU TO KNOW

Your vehicle or transmitter might cause TV or radio interference even when it is operating properly. To determine whether your vehicle or transmitter is causing the interference, turn off your vehicle and transmitter. If the interference goes away, your vehicle or transmitter is causing it.

Try to eliminate the interference by:

- Moving your vehicle and transmitter away from the TV or radio.
- Contacting your local store for help.

If you cannot eliminate the interference, the FCC requires that you stop using your vehicle.

The antenna provided is a unique antenna. By installation of unauthorized antenna to this equipment. Such unauthorized installation could void the user's authority to operate the equipment.

This device complies with part 15 of the FCC Rules. Operation is subject to the following two conditions:

- This device may not cause harmful interference, and
- This device must accept any interference received, including interference that may cause undesired operation.

THE MANUFACTURER IS NOT RESPONSIBLE FOR ANY RADIO OR TV INTERFERENCE CAUSED BY UNAUTHORIZED MODIFICATIONS TO THIS EQUIPMENT. SUCH MODIFICATIONS COULD VOID THE USER'S AUTHORITY TO OPERATE THE EQUIPMENT.



Printed in Hong Kong

Thank you for purchasing the MicroZ. Your MicroZ is mostly factory tuned and assembled but still requires simple set up before use. Please read this manual before using the unit.

## INSTALLING BATTERIES

### Cautions:

- Use only fresh batteries of the required size and recommended type.
- Do not mix old and new batteries, different types of batteries (standard, alkaline or rechargeable), or rechargeable batteries of different capacities.
- Non-rechargeable batteries are not to be recharged.
- Rechargeable batteries are to be removed from the vehicle before being charged.
- Rechargeable batteries are only to be charged under adult supervision.
- Only batteries of the same or equivalent type as recommended are to be used.
- Batteries are to be inserted with the correct polarity.
- Exhausted batteries are to be removed from the vehicle. Never leave dead or weak batteries in the vehicle or transmitter.
- The supply terminals are not to be short-circuited.
- If you will not be using the vehicle for several days, remove the batteries. Batteries can leak chemicals that can damage electronic parts.

- Dispose of batteries promptly & properly; do not bury or burn them.
- Charger used with the vehicle are to be regularly examined for damage to the cord, plug, enclosure and other parts, and that, in the event of such damage, the vehicle must not be used with this charger until the damage has been repaired.
- Keep the package and owner's manual since it contains important information.

### In the Car

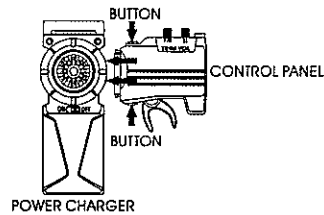
Your MicroZ comes with a built-in Ni-MH rechargeable battery for power. No additional battery is required.

### In the Transmitter

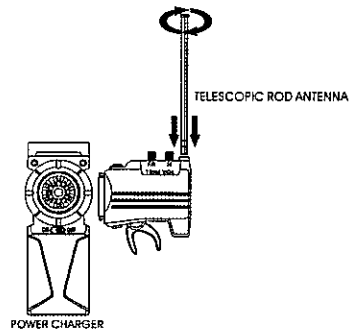
Your unique pistol grip transmitter consists of three separate parts and requires four (4) "AAA" 1.5V batteries for power. For the best performance and longest life, we recommend to use alkaline batteries.

1. Set ON/OFF on the Power Charger to OFF.
2. Use the special tool bit (included) to loosen the screw and remove the battery compartment cover.
3. Insert four (4) "AAA" 1.5V batteries in the compartment according to the polarity symbols (+ and -) marked inside.
4. Replace the cover and secure it with the screw.

5. Press down on the two buttons on the Control Panel and insert it into the Power Charger as shown.

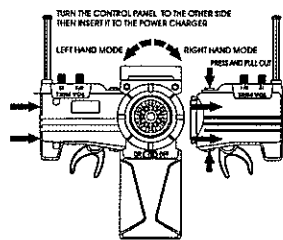


6. Screw the Telescopic Rod Antenna in place as shown.



## Right or Left Hand Grip Transmitter

Your unique Transmitter can be set to either right hand or left hand grip at your own desire. Simply press down on the two buttons on the Control Panel, slide it off and insert it into either side of the Power Charger as shown.

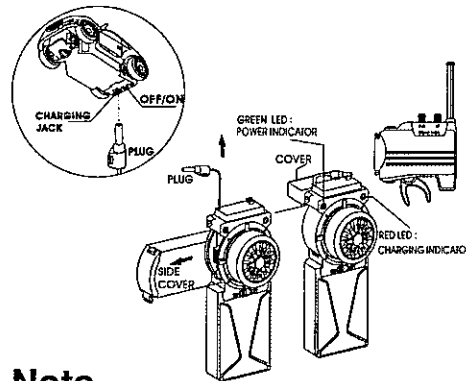


Make sure to replace the side cover to protect the multi-pins connector from dust and dirt.

\* Styles of vehicle may appear different from the illustration.

## CHARGING THE CAR

1. Set the ON/OFF power switch on Transmitter to ON. The green power indicator LED illuminates.
2. Set the OFF/ON power switch on bottom of car to off.
3. Open the cover on top of the Transmitter and insert the plug into the charging jack on bottom of car. The red charging indicator LED illuminates.
4. Release the plug from the car's charging jack when the red charging indicator LED turns off.



### Note

- The charging takes about one minute. You may run your car for about three minutes before recharging is required.
- Be sure to run your car until the power is completely exhausted before recharging.
- If the green power indicator LED on the Transmitter becomes dim, it is time to replace the four (4) "AAA" 1.5V batteries.

## DRIVING THE CAR

1. Set the ON/OFF power switch on Transmitter to ON. The green power indicator LED illuminates.
2. Fully extend the transmitter's Telescopic Rod Antenna.
3. Set the OFF/ON power switch on bottom of car to ON.
4. Use your unique pistol grip Transmitter to drive and steer your MicroZ.

**Caution:** Always set **OFF/ON** on car to **OFF** first, then set **ON/OFF** on the transmitter to **OFF**.

### Trigger

- Pull backward to move the car forward.
- Front lights light up. Push forward to move the car backward.
- Rear lights light up. The further you pull/push the trigger, the faster the car goes.
- Release to stop.

### Steering Wheel

- Steer left to turn left.
- Steer right to turn right.
- The further you steer the steering wheel, the sharper the car turns.
- Release to go straight.

## Adjusting the TRIM VOL

Place the car on a box so the wheels do not touch the ground. Do not touch the wheels during the adjustment.

### Adjusting Speed Trim

Turn the F/R knob clockwise or counter-clockwise so that the wheels stop completely when the throttle trigger is released.

### Adjusting Steering Trim

Turn the ST knob clockwise or counter-clockwise so that the wheels point directly forward.

### Note

- If your car runs slowly, or not at all, or does not respond to the Transmitter, recharge it.
- For best driving condition, use a smooth, flat surface. Avoid rugs, carpets and family pets.
- Never use the throttle trim to make the car go. It is for adjustment only.

## Upgrade the Performance of your MicroZ

Your unique MicroZ can be taken apart and upgrade the performance with body, power, tire & wheel set, tuner kit and off road kit. Please check out all the fun upgrade kits.

PERFORMANCE  
GEARS

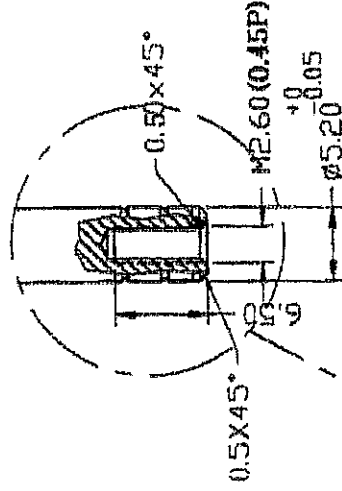
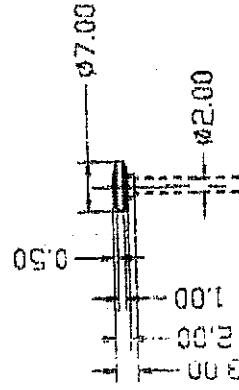
PERFORMANCE  
MOTORS

		GREEN 13.9:1		GREEN RPM
		YELLOW 11.43:1		YELLOW RPM
		RED 9.58:1		RED RPM

## HELPFUL HINTS

Follow these hints to get the most enjoyment from your car.

- If the car moves slowly, and you have recharged the car, check the wheel mechanisms for lint, thread, hair or dust.
- If someone uses a CB nearby, it might interfere with control of the car. If this happens, move the car away from the CB.
- You cannot operate your car near devices with transmitters that use the same frequency. Check the car's box to see what frequency your car uses.



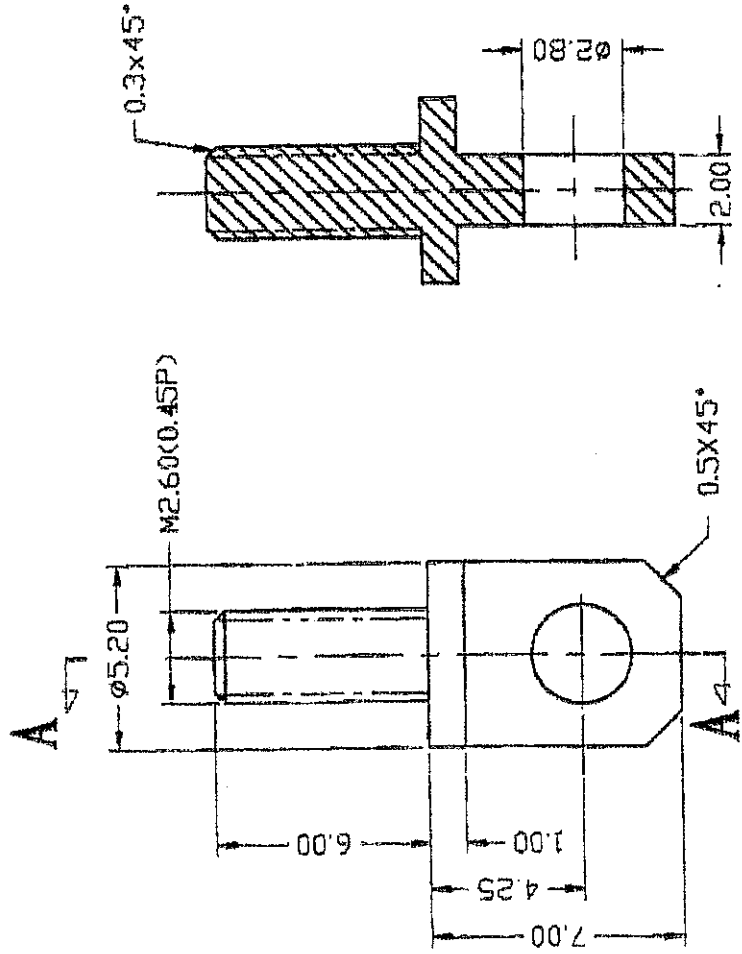
SCALE 2:1

第几节	直径	长度
5	Ø2.00	56.00
4	Ø2.80	71.00
3	Ø3.60	72.00
2	Ø4.40	74.00
1	Ø5.20	87.00

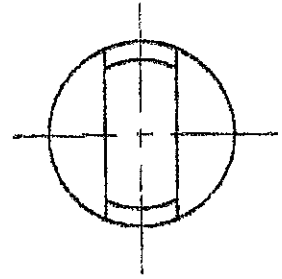
注:

1. 去除外露所有尖利角.
2. 未注圆角取R0.20.
3. 共5节, 拉长后长度为 334.00 ± 10.00mm.


QTY.	UNIT	MATERIAL	BRASS TUBE 黄铜管		TOLERANCES UNLESS OTHERWISE STATED	
1	MM				DIMENSION	±0.10
SCALE	1:1	TREATMENT CHROMIUM PLATED 电镀	MODEL NO.		5	
					4	
					3	
					2	
PART NAME:		TELESCOPIC ROD ANTENNA 拉杆天线	PART NO.		1	YYQ
					NO.	DESIGNED BY
						DATE



SEC A-A



注:  
1. 去除外露所有尖利角.  
2. 未注圆角取R0.20.

QTY.	UNIT	MATERIAL	TOLERANCES UNLESS OTHERWISE STATED			
1	MM	FREE CUTTING STEEL ROD 快削钢棒	DIMENSION		±0.10	
SCALE 5:1	THIRD ANGLE PROJ. 	TREATMENT NICKEL PLATED 镀镍	MODEL NO.		5	
					4	
					3	
					2	
PART NAME:		PART NO.		1	YYQ	
ANTENNA FIXING SCREW 天线螺丝				NO.	DESIGNED BY	DATE