

WATER FANTASY

U-Choice Products Ltd.



Key Features:

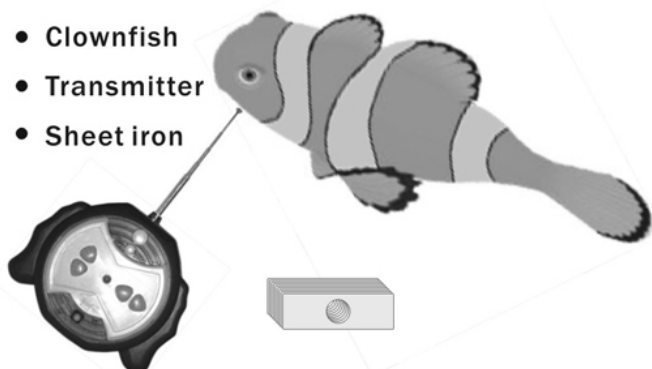
- Full Function Radio Control dive up/down, turn left/right
- Real Water wonder water resistant
- 25 minutes' powerful swimming

Safety Precaution:

Parents, this toy is recommended for children ☐ years and older. To ensure that your child's play is both safe and fun, please review the operating instructions with your children. If toy in the presence of children under ☐ years of ages, adult supervision is recommended.

Index to Parts

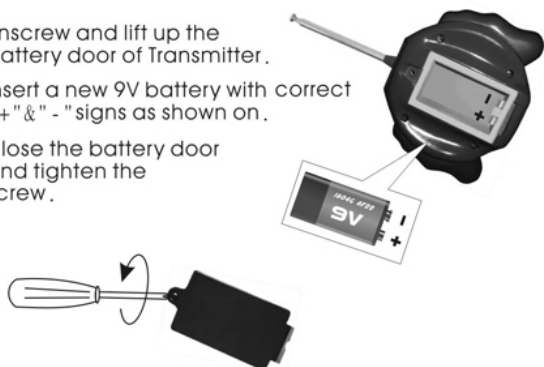
- Clownfish
- Transmitter
- Sheet iron



Instruction Manual(included)

Battery Installation: Transmitter

1. Unscrew and lift up the battery door of Transmitter.
2. Insert a new 9V battery with correct "+" & "-" signs as shown on.
3. Close the battery door and tighten the screw.

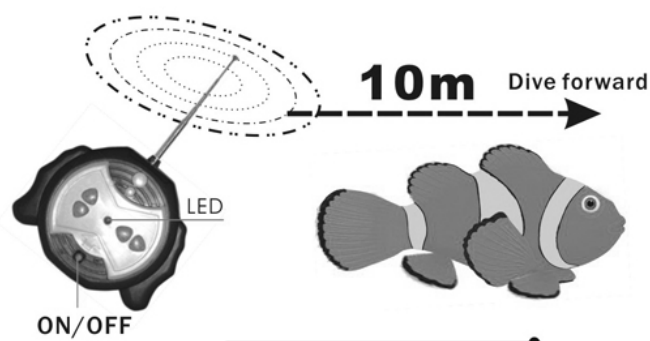
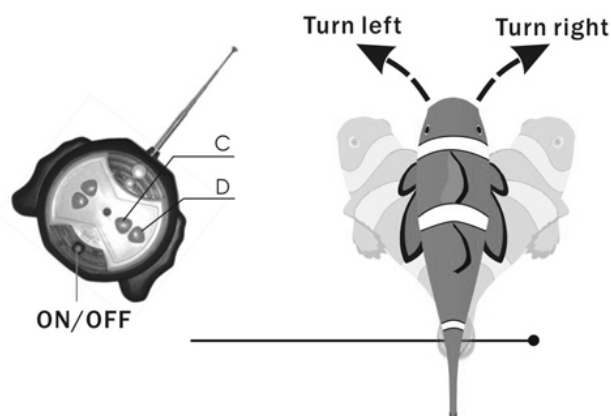
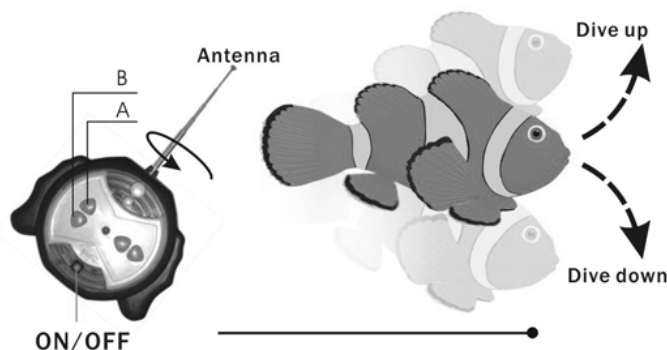


Battery Caution:

1. Non-rechargeable batteries are not to be recharged.
2. Rechargeable batteries are only to be charged under adult supervision.
3. Don't mix alkaline, standard (carbon-zinc), or rechargeable (nickel-cadmium) batteries.
4. Only batteries of the same or equivalent type as recommended are to be used.
5. Don't mix old batteries with new batteries (replace all the batteries at the same time).

Operating the Water Fantasy

1. Install the antenna on top of Transmitter.
2. Fully extend the antenna.
3. Turn ON the switch of the Transmitter and Clownfish.
4. Press the ON/OFF Switch on the transmitter to make Clownfish dive forward.
5. Press button A or B to make Clownfish dive up or down respectively.
6. Press button C or D to make Clownfish turn left or right respectively.



- Remote control distance: Approx 10m.
- Playing time: Approx 25 minutes.
- The LED will be on when press any button on the transmitter during the operating.

6. Batteries are to be inserted with correct polarity.
7. Remove batteries from the product before extended storage.
8. The supply terminals are not to be short-circuited.
9. Exhausted batteries should be removed from the toys and disposed in special container.
10. Make sure the contact surfaces are clean and bright before installing batteries.

ADUCTS: Install batteries as shown in illustration.

NOTE:

THE MANUFACTURER IS NOT RESPONSIBLE FOR ANY RADIO OR TV INTERFERENCE CAUSED BY UNAUTHORIZED MODIFICATIONS TO THIS EQUIPMENT. SUCH MODIFICATIONS COULD VOID THE USER AUTHORITY TO OPERATE THE EQUIPMENT.