



PanGo Version 3 Tag Battery Installation Guide

Installing Battery

Version 1.0

I. Who Should Use This Guide?

This Set Up Guide will explain how to install the battery in the PanGo Version 3 Tag.

II. Getting Started

Installing a battery in the PanGo Version 3 Tag requires replacement battery (Tadiran part number: TL-5903) and #1 philips screw driver.

- **PanGo Version 3 Tag**



- **A #1 Philips screw driver**

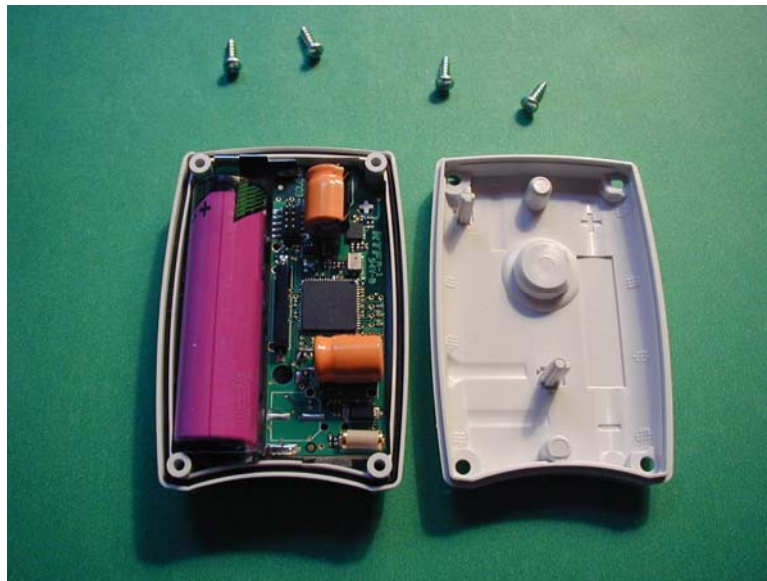


III. Installing the Battery Pack

The following steps describe how to open the tag and install the battery pack.

Note: The tag contains sensitive circuitry that can become damaged by static electricity; an anti-static strap should be worn.

1. Using a #1 philips screw driver, open the tag by removing the four screws holding the back housing in place.
2. Swing the back housing off of the front using the MAC address label as a hinge.
3. Replace the battery with a new one, following the polarity markings as shown molded into the plastic housing. Only use approved battery (Tadiran part number: TL-5903)



4. Carefully place the back housing in place, taking care to be certain that the black rubber oring seal is still in place.
5. Re-install the back housing using the four #1 Philips screws. Take care not to over tighten these screws.

IV. FCC Part 15

FCC Rules

This device complies with Part 15 of the FCC Rules. Operation is subject to the following two conditions:

- (1) this device may not cause harmful interference, and
- (2) this device must accept any interference received, including interference that may cause undesired operation.

FCC ID of this device is: TAG-PN80000.

This equipment has been tested and found to comply with the limits, pursuant to Part 15 of the FCC rules. These limits are designed to provide reasonable protection against harmful interference in a residential installation. This equipment generates, uses and can radiate radio frequency energy and, if not installed and used in accordance with the instructions, may cause harmful interference to radio communications. However, there is no guarantee that interference will not occur in a particular installation. If this equipment does cause harmful interference to radio or television reception, which can be determined by turning the equipment off and on, the user is encouraged to try to correct the interference by one or more of the following measures:

- Reorient or relocate the receiving antenna.
- Increase the separation between the equipment and the receiver.
- Connect the equipment into an outlet on a circuit different from that to which the receiver is connected.
- Consult the dealer or an experienced radio/TV technician for help.

You may also find helpful the following booklet, prepared by the FCC: "How to Identify and Resolve Radio-TV Interference Problems." This booklet is available from the U.S. Government Printing Office, Washington D.C. 20402.

Changes and Modifications not expressly approved by the manufacturer or registrant of this equipment can void your authority to operate this equipment under Federal Communications Commissions rules.