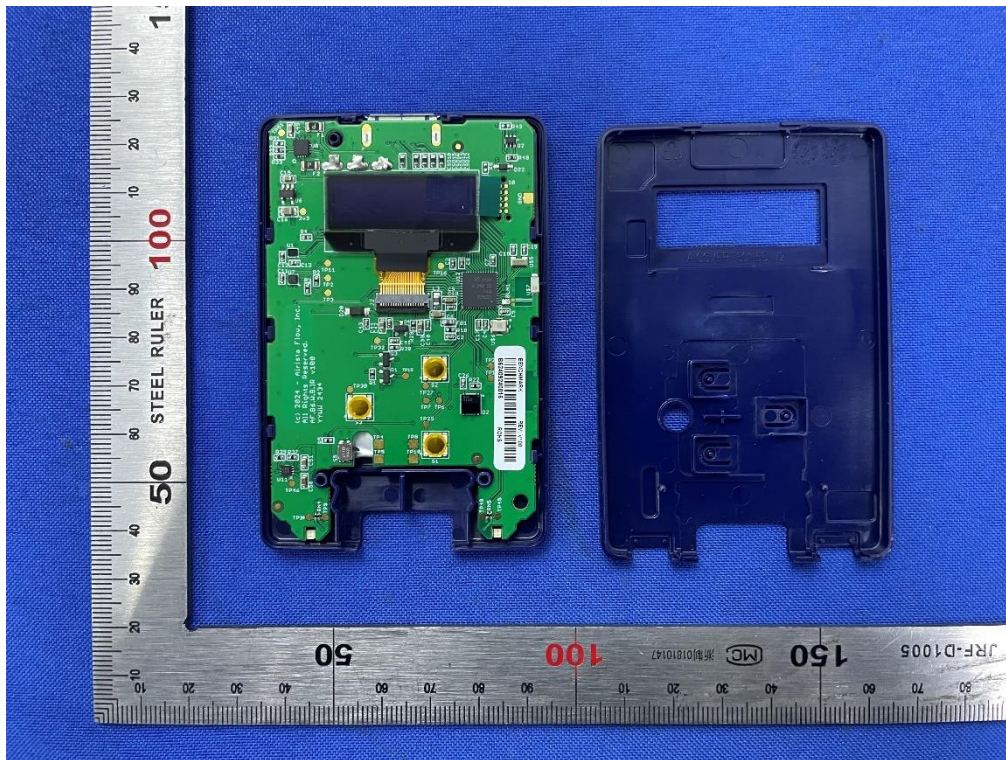
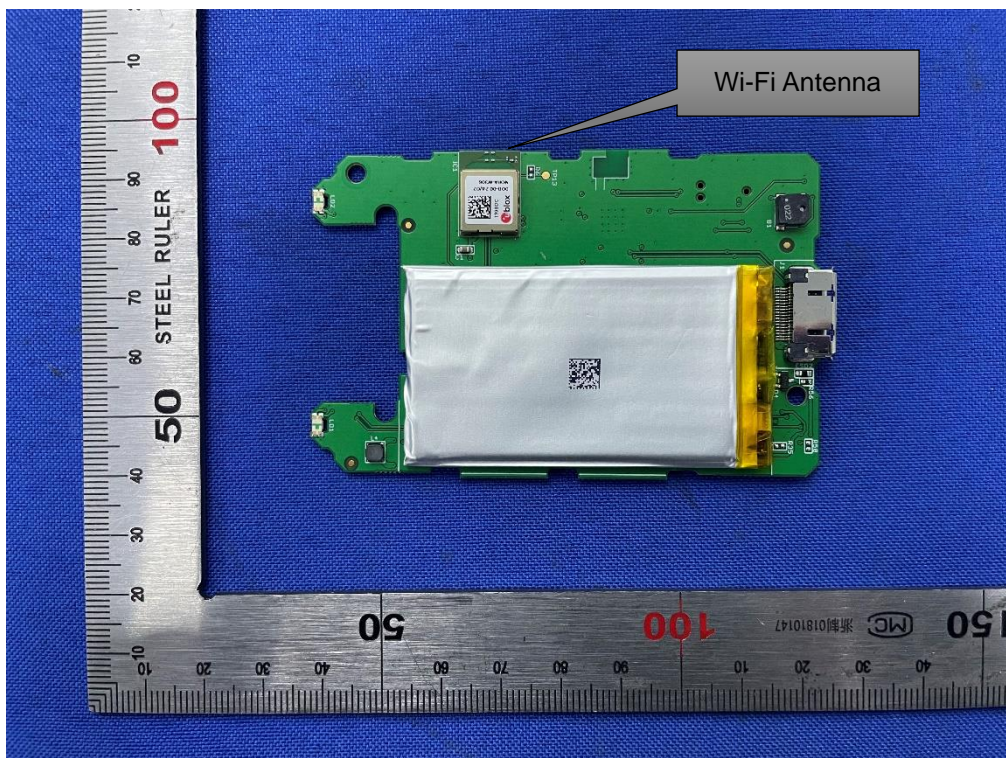


B6 Internal photo

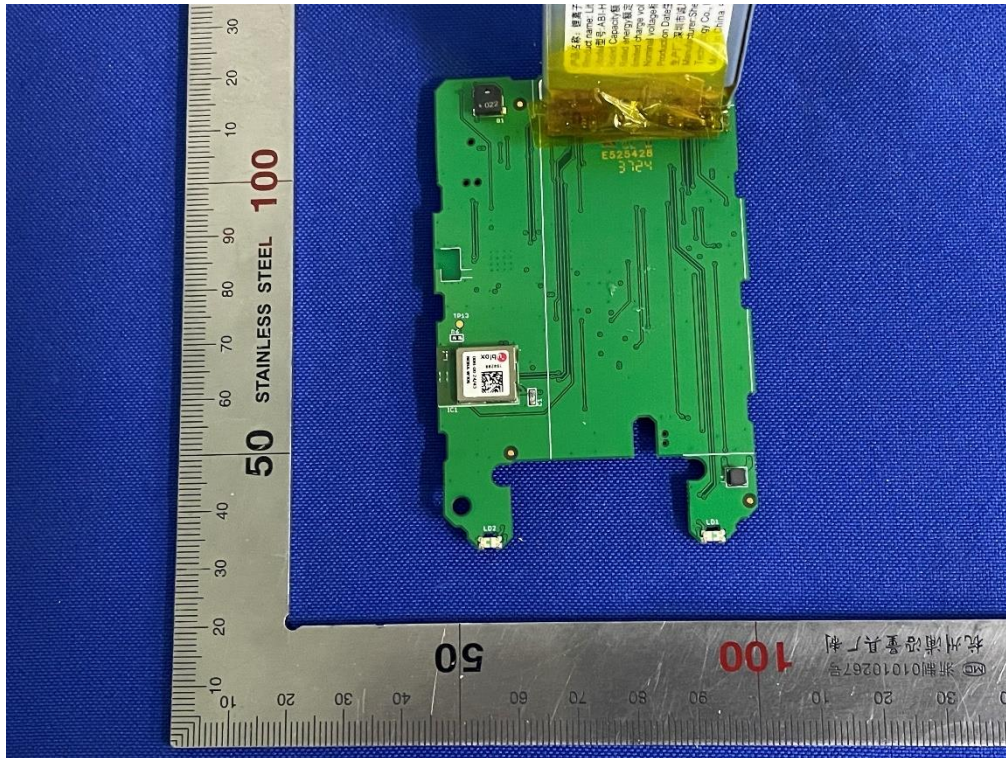


Open of the sample

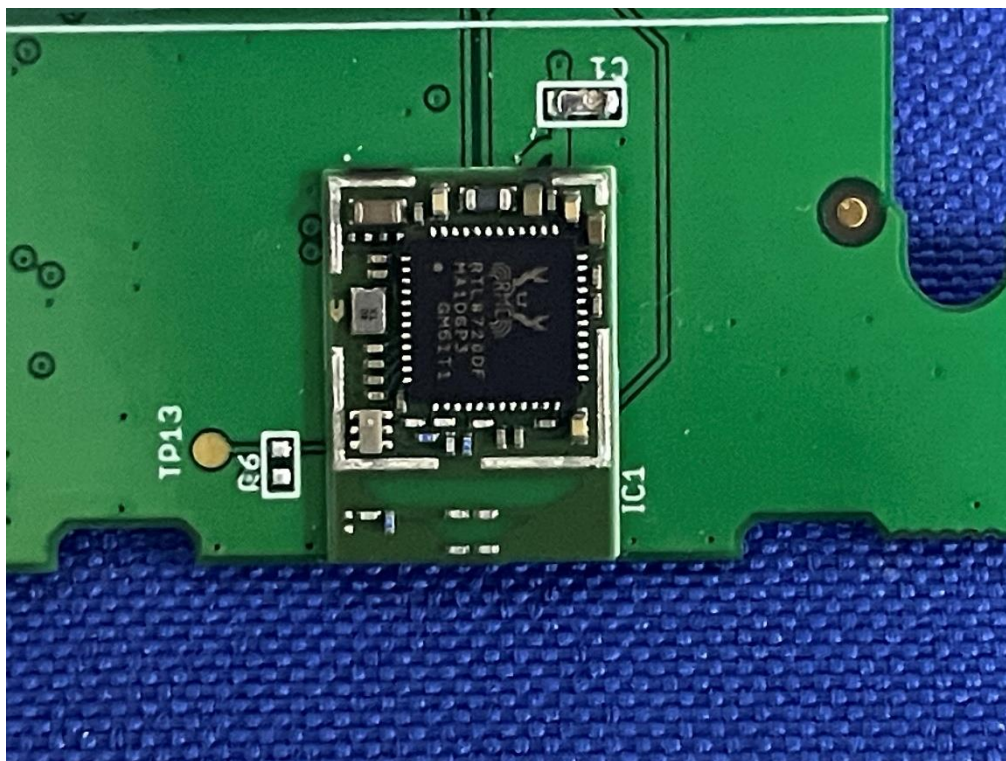


Internal-1 of the sample



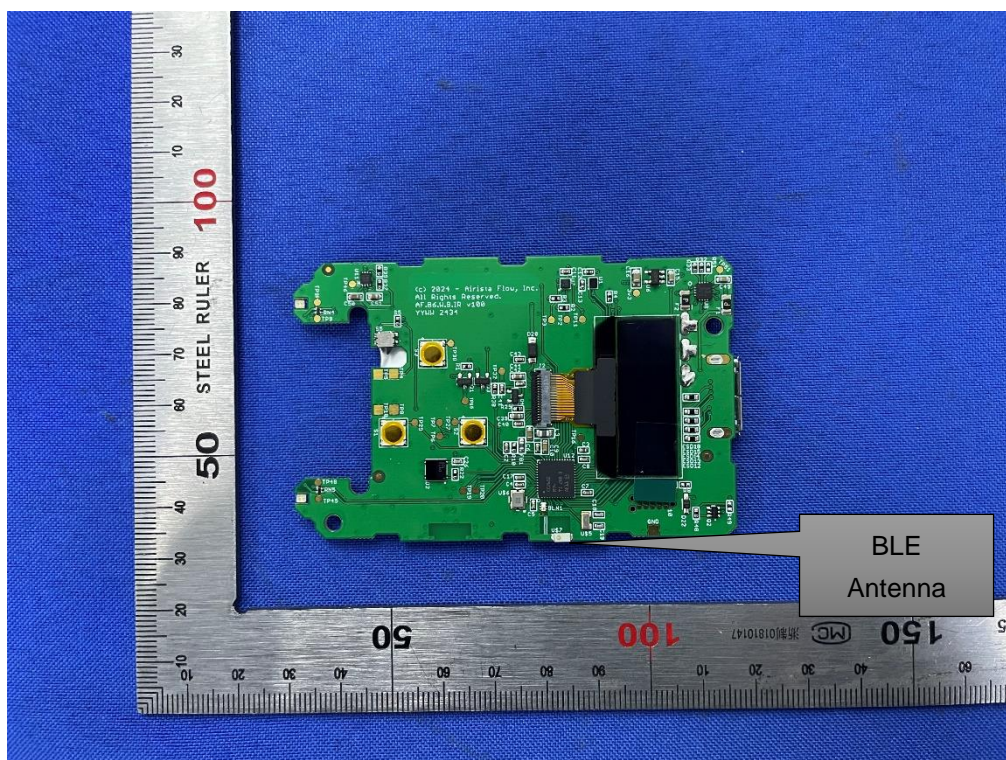


Internal-2 of the sample



NORA-W306 Module

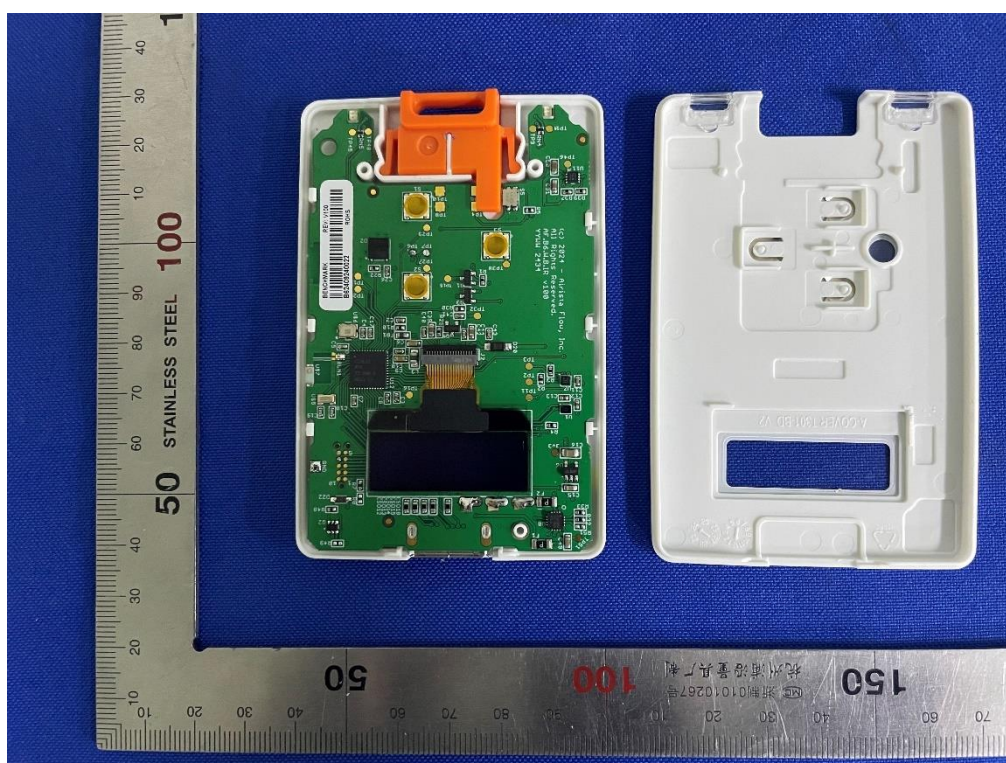




Internal-3 of the sample

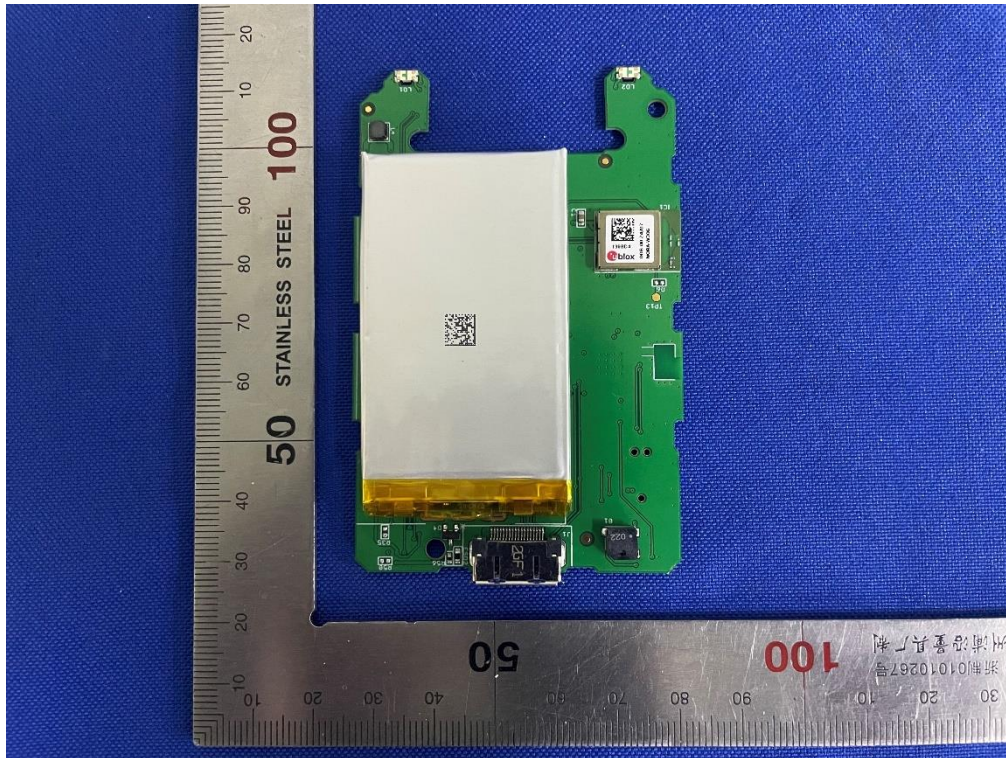
Add a B6 model with a white shell

*(Note: The difference is that only the shell color is different, everything else is the same)*

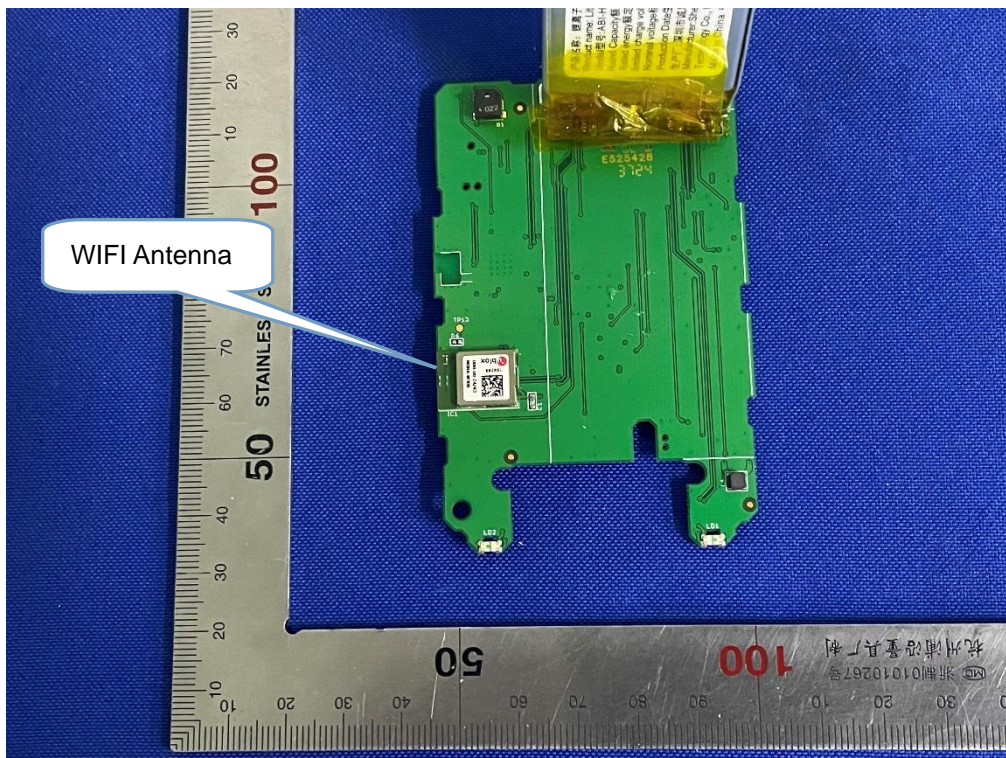


Open of the sample



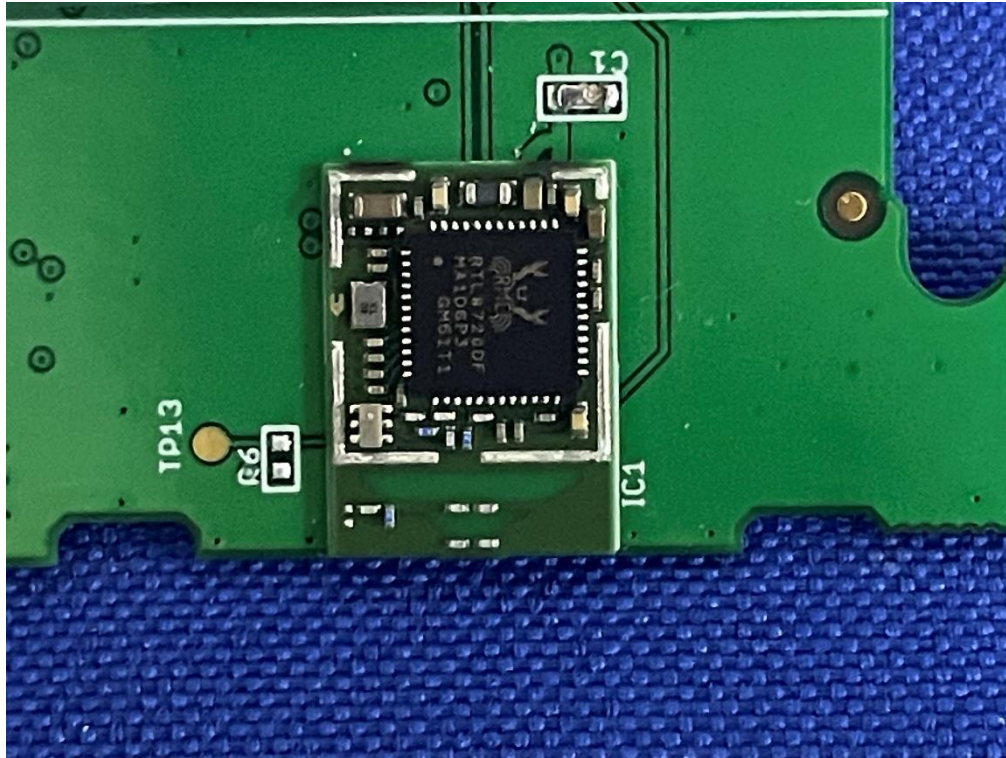


Internal-1 of the sample

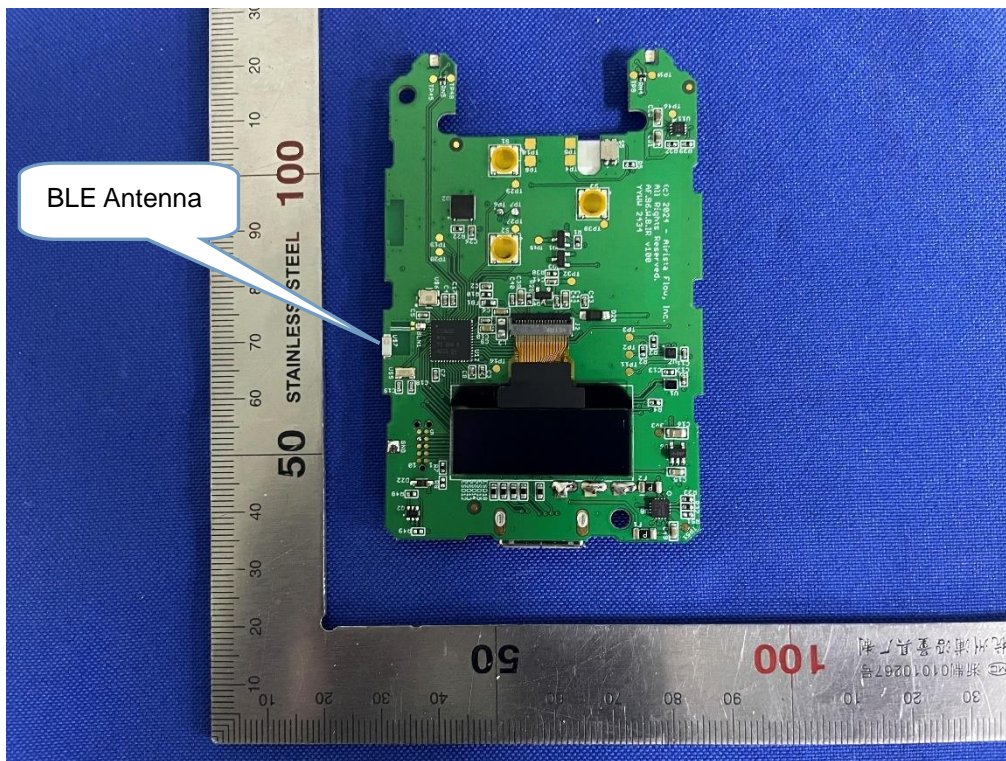


Internal-2 of the sample





**NORA-W306 Module**



**Internal-3 of the sample**