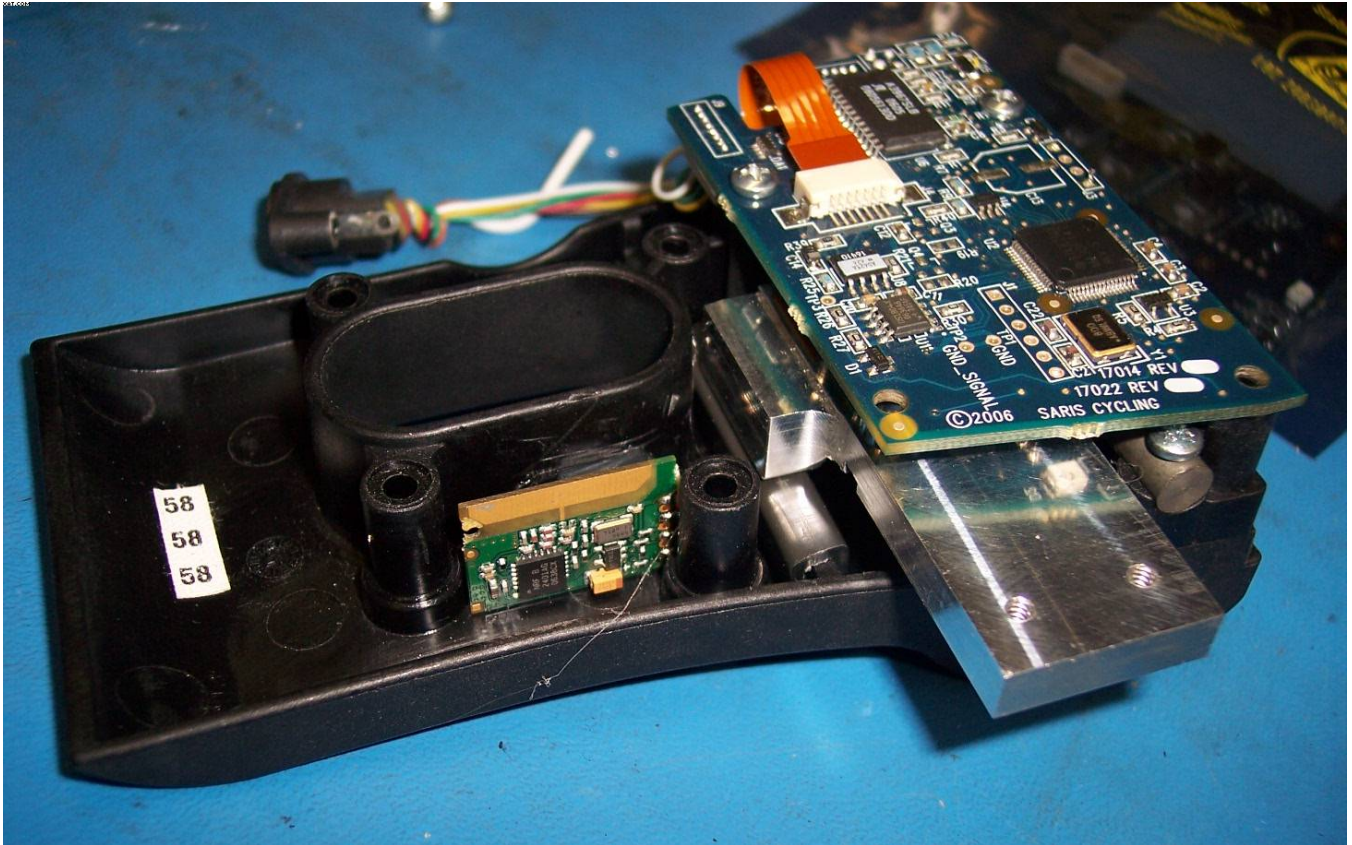


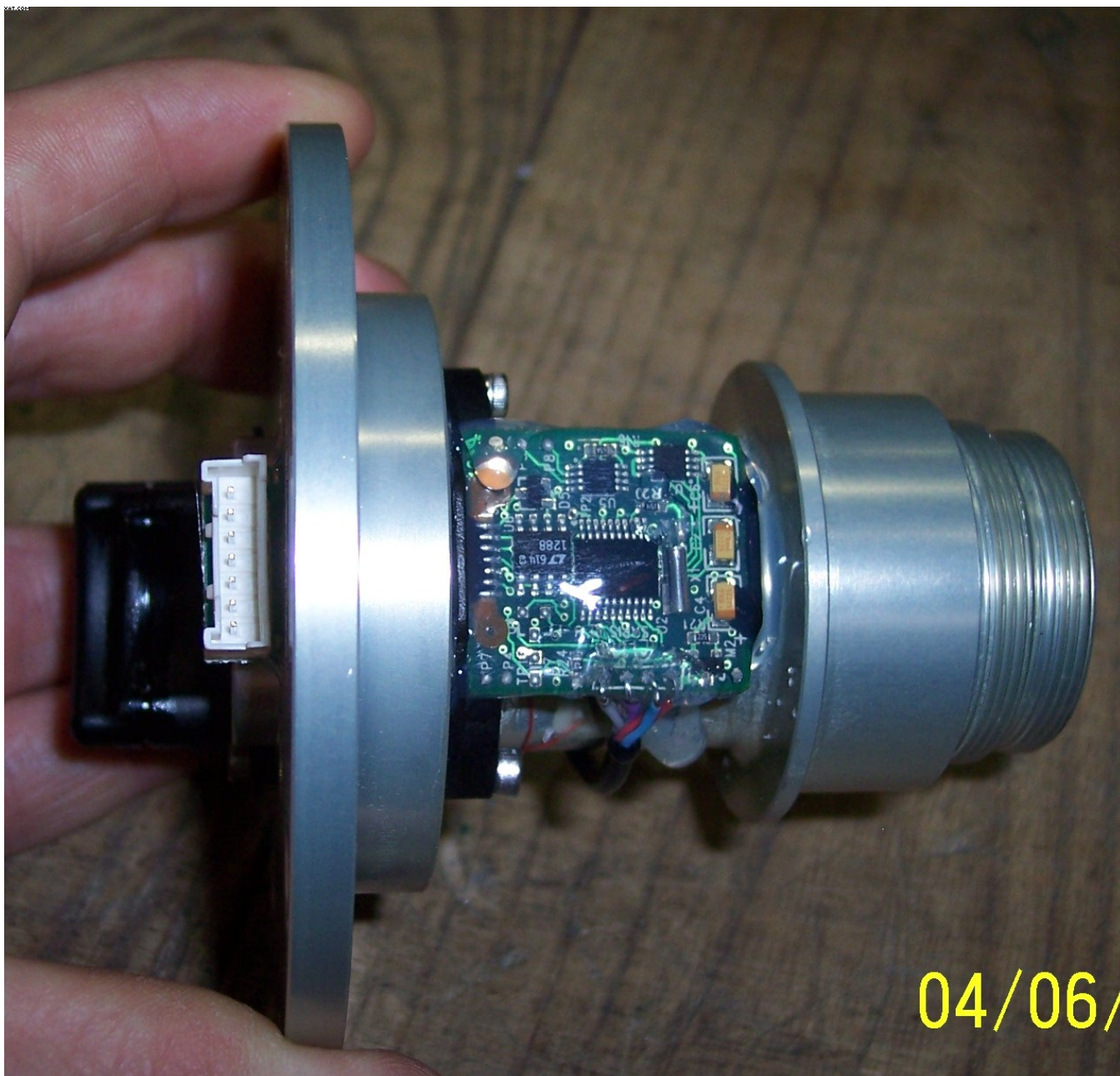
POWERBEAM



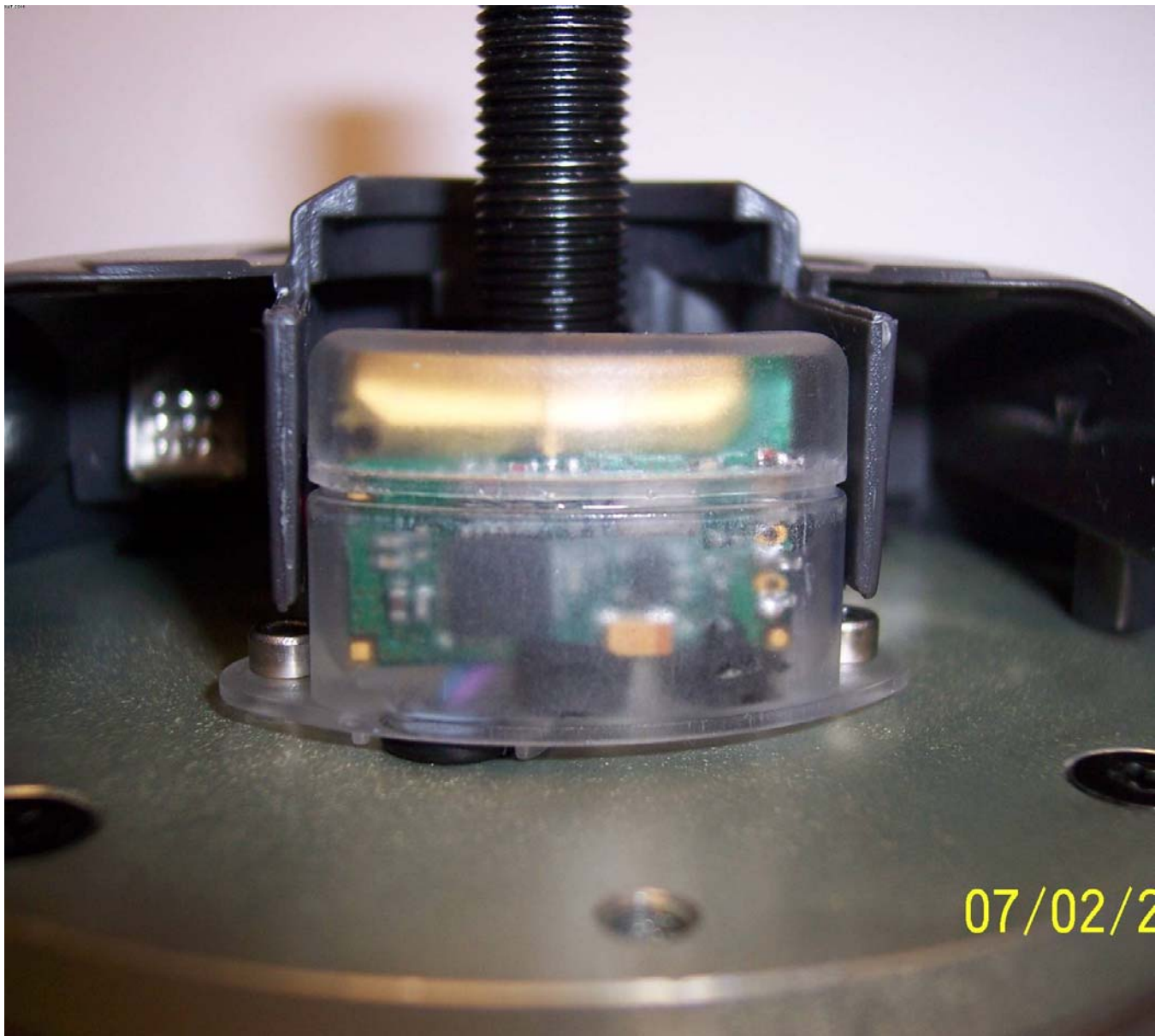
POWERBEAM



POWERBEAM



PRO 300PT



PRO 300PT



PRO 300PT



PRO 300PT



PowerTap SL2.4 Front with Cover Removed



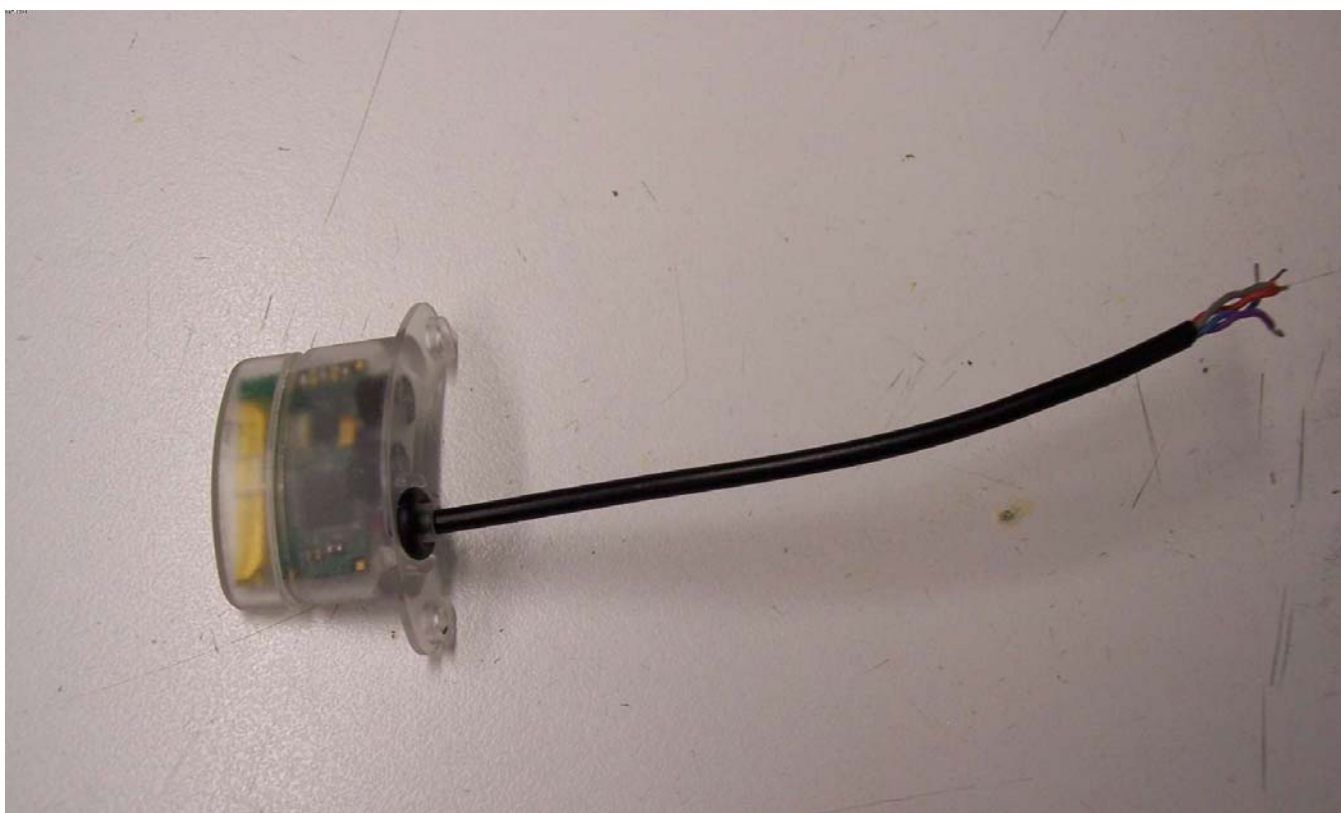
PowerTap SL2.4 Location of PCB



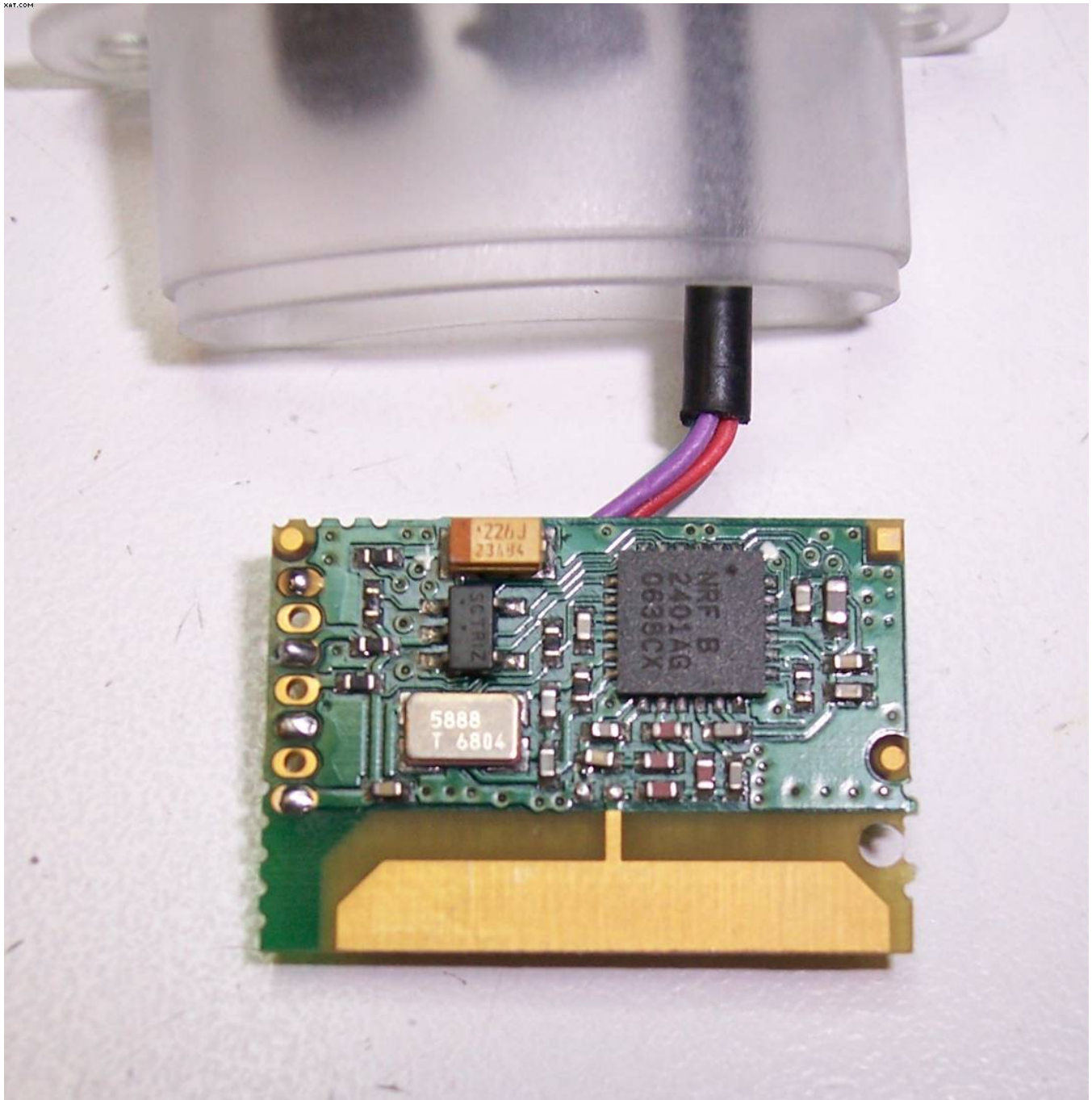
PowerTap SL2.4 Side Front Removed



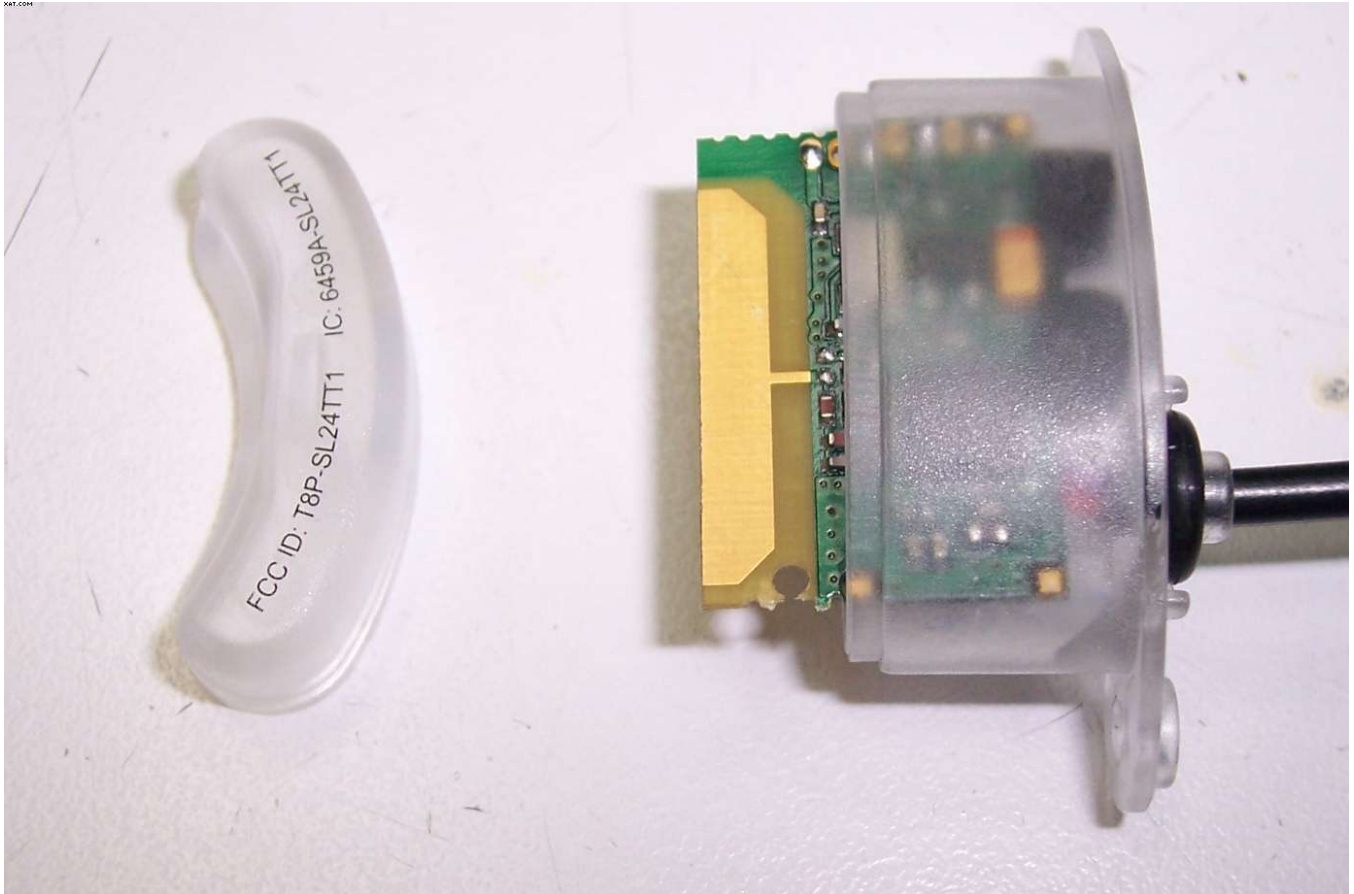
PowerTap SL2.4 Unit Disassembled



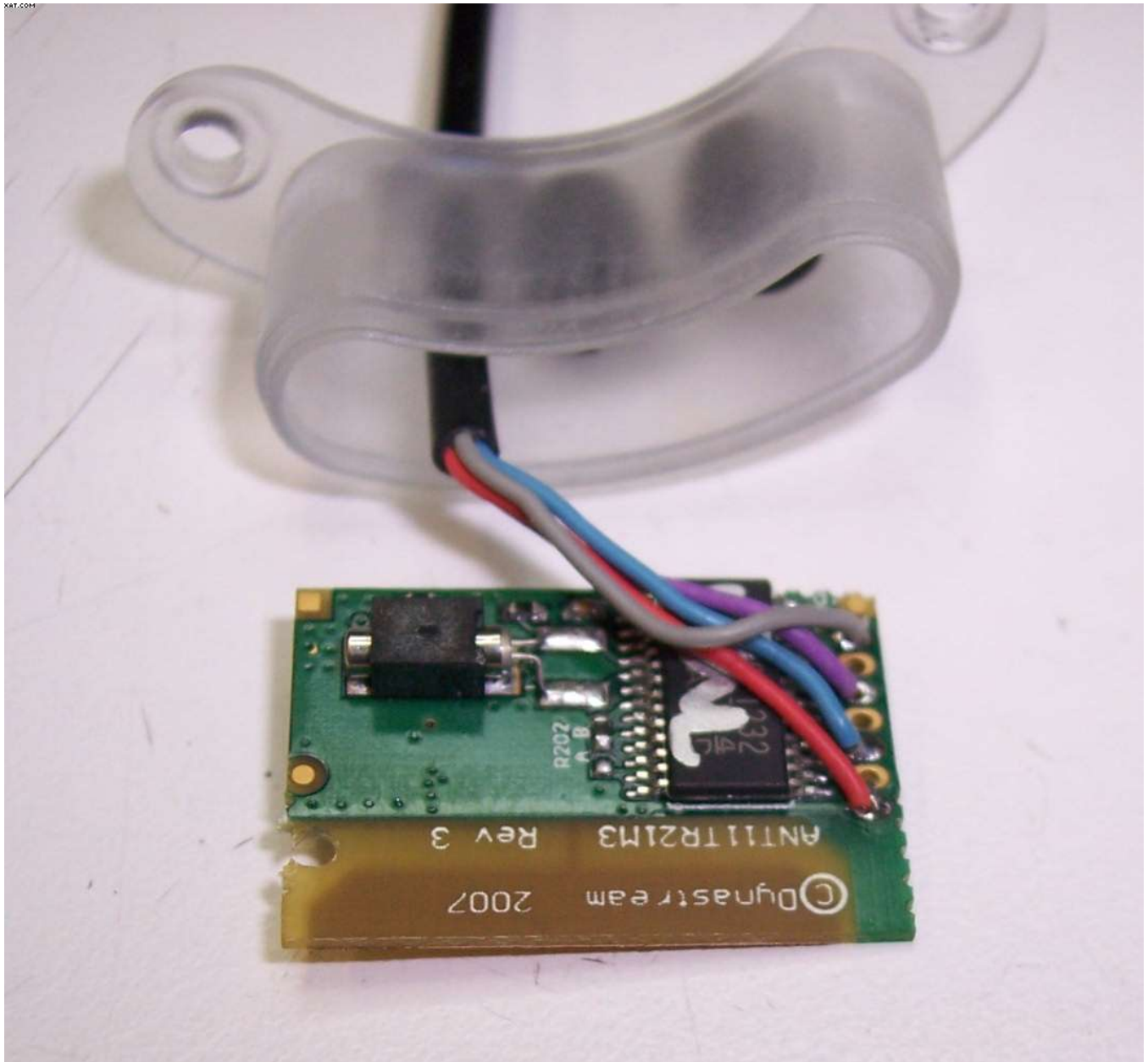
PowerTap SL2.4 Transmitter Board in Cover



PowerTap SL2.4 Top of Transmitter Board



PowerTap SL2.4 Cover Removed from Transmitter Board



PowerTap SL2.4 Bottom of Transmitter Board



WE BRING CYCLING TO LIFE

Saris Cycling Group Inc.
Phone: (608) 274-6550

5253 Verona Road

Madison, Wisconsin 53711
Fax: (608) 277-2870

DATE: August 3, 2007
TO: accreditation facility
FROM: Ed Watson
RE: Saris Transmitter
REF: ATCB005226 | T8P-SL24TT1 | 6459A - SL24TT1 || T8P-SL24TT1_ATCB005226

Transmitter:

The RF module design (printed circuit board and components) for the transmitter contained in the following three products; PowerTap SL2.4, PT300 and PowerBeam are identical.

Internally at Saris, The RF module design part number is 17709, design files 17709-SCH, 17709-PCB, 17709-BOM represents the schematic, gerber data files and Bill of Material for the RF module tested.

Respectfully,

Ed Watson