

US-EN ORIGINAL INSTALLATION AND OPERATING MANUAL

Garage door opener

2060 pro+

2080 pro+

2110 pro+



Limited Lifetime Warranty is contained at the end of the manual.

Dear customer,

Congratulations on your purchase of a product of SOMMER.

This product has been developed and manufactured under high standards of quality. Our passion for the product is just as important to us as the needs and requirements of our customers. We place particular emphasis on the safety and reliability of our products.

Read this installation operating manual carefully and follow all instructions. This will ensure that you can install and operate the product safely and optimally.

If you have any questions, please contact your specialist retailer, installer or contact.

Information on the opener:

Serial No.: See the title page of the installation and operating manual (if applicable warranty label).

Year of manufacture: from 03.2015

Information on the installation and operating manual

Version of the installation and operating manual:

pro-plus_S11903-00024_122022_0-DRE_Rev-B_US-EN

Warranty

The warranty complies with statutory requirements. The contact person for warranties is the qualified dealer. The warranty is only valid in the country in which the opener was purchased. Batteries, fuses and lights are excluded from the warranty.

Contact data


If you require after-sales service, spare parts or accessories, please contact your specialist retailer, installer or contact


Sommer USA, Inc.

2217 Distribution Centre Drive, Suite F

Charlotte, NC 28269

United States of America

 Tel +1 877-766-6607


 Fax +1 704-424-7699

info@sommer-usa.com

www.sommer-usa.com

Feedback on this installation and operating manual

We have tried to make the Installation and Operating Manual as easy as possible to follow. If you have any suggestions as to how we could improve them or if you think more information is needed, please send your suggestions to us:

 Fax +1 704-424-7699

 info@sommer-usa.com

Service

If you require service, please contact us on our service hotline (fee required) or see our web site:

 Tel +1 877-766-6607 (Toll Free only USA)

<http://www.sommer-usa.com>

Copyrights and proprietary rights

The manufacturer retains the copyright for this installation and operating manual. No part of this installation and operating manual may be reproduced in any form without the written permission of **SOMMER USA, Inc.** or processed, copied, or distributed using electronic systems. Violations of the above stipulations will lead to damage claims. All brands mentioned in these instructions are the property of their respective manufacturer and hereby recognized as such.

Table of contents

1. About this installation and operating manual	4
1.1 Storage and circulation of the installation and operating manual	4
1.2 Important for translations	4
1.3 Description of the product type	4
1.4 Target groups of the installation and operating manual	4
1.5 Explanation of warning symbols and instructions in the installation and operating manual	4
1.6 Special warnings, hazard symbols and mandatory signs	5
1.7 Information regarding the depiction of text	6
1.8 Intended use of the opener	6
1.9 Improper use of the opener	6
1.10 Qualifications of personnel	6
1.11 User	7
2. General safety instructions	8
2.1 Basic safety instructions for operation	8
2.2 Additional safety information for the radio remote control	9
3. Description of function and product	10
3.1 The opener and its mode of operation	10
3.2 Safety equipment	10
3.3 Product designation	11
3.4 Product contents	12
3.5 Product contents for safety sensor kit	13
3.6 Dimensions	14
3.7 Technical data	14
3.8 Information about transmitter	15
3.9 Door types and accessories	15
4. Tools and protective equipment	16
4.1 Required tools and personal protective equipment	16
5. Installation	17
5.1 IMPORTANT INSTALLATION INSTRUCTIONS	17
5.2 Installation requirements	18
5.3 Preparation for installation	19
5.4 Installation of the opener system	20
5.5 Installing the opener system for installations variants A, B and C	21
5.6 Attachment to the door	23
5.7 Installing the wall control unit	27
6. Connection and special functions of the wall control unit	29
6.1 Control unit cover of the wall control unit	29
6.2 Wall control unit pcb	30
6.3 Connection options to the wall control unit	31
6.4 Setting the DIP switches on the wall control unit	32
6.5 Installing the safety sensors	32
6.6 Installation requirements and dimensions	33
6.7 Installation	33

Table of contents

6.8	Connection of the safety sensors	34	12.2	Handover to the user	55
6.9	Functions of the buttons	34	12.3	Operating modes of door movement	55
6.10	Output OC	35	12.4	Obstacle detection	56
6.11	Relay	35	12.5	Function of the emergency release	56
6.12	Installing the control unit cover of the wall control unit	35	13. Maintenance and Care	58	
7. Connections and special functions of the carriage	36		13.1	Safety instructions for maintenance and care	58
7.1	Cover of carriage	36	13.2	Maintenance schedule	59
7.2	Carriage pcb	37	13.3	Care	59
7.3	Connection options on the carriage	38	14. Troubleshooting	60	
7.4	Reducing illumination power of LEDs	38	14.1	Safety instructions for troubleshooting	60
7.5	Explanation of radio channels	39	14.2	Troubleshooting	61
7.6	Programming the transmitter	39	14.3	Time sequences of opener lighting in normal operation and in case of faults	62
7.7	Information on Memo	39	14.4	Troubleshooting table	63
7.8	Cancelling programming mode	39	14.5	Replacing the carriage	64
7.9	Deleting a transmitter button from the radio channel	39	15. Taking out of operation, storage and disposal	65	
7.10	Deleting the transmitter completely from the receiver	40	15.1	Taking the opener out of operation and disassembly	65
7.11	Deleting radio channel in the receiver	40	15.2	Storage	65
7.12	Deleting all radio channels in the receiver	40	15.3	Disposal of waste	66
7.13	Programming a second transmitter by radio (HFL)	40	16. Warranty terms and conditions	67	
7.14	Resetting the wall control unit	41	16.1	Limited Lifetime Warranty	67
7.15	Setting the DIP-Switches on the carriage	41	17. Product warranty registration card	69	
7.16	Automatic closing function – defining basic values	41	18. Brief instructions for installation	70	
7.17	Adjusting the lighting function	42	19. Connection diagrams and functions of the DIP switches	74	
7.18	12 V output	42			
7.19	Setting partial opening	43			
7.20	Deleting partial opening	43			
7.21	HomeLink programming	43			
7.22	Connecting the safety contact strip	44			
7.23	Wicket door safety device	44			
7.24	SOMlink	44			
8. Battery pack	45				
8.1	Installing and removing battery pack	45			
9. Electrical connection	46				
9.1	Connection to a power outlet	46			
10. Initial operation	47				
10.1	Safety information for installation	47			
10.2	Initial operation	47			
10.4	Detecting obstacles during force programming	50			
10.5	Mechanical adjustment of the end positions	50			
10.6	Attaching information sign and warning sign	50			
11. Final test / function test	52				
11.1	Testing obstacle detection	52			
11.2	Testing the safety sensor function	53			
12. Operation	54				
12.1	IMPORTANT SAFETY INSTUCTIONS	54			

1. About this installation and operating manual

1.1 Storage and circulation of the installation and operating manual

Read this installation and operating manual carefully and completely before installation, commissioning and operation and also before removal. Follow all warnings and safety instructions.

Keep this installation and operating manual accessible at all times at the place of use. If your installation and operating manual is damaged or lost, it can be downloaded from **SOMMER USA**, Inc. at:

www.sommer.eu

During the transfer or resale of the opener to third parties, the following documents must be passed on to the new owner:

- This installation and operating manual
- Documents recording retrofitting and repairs
- Proof of regular care, maintenance and testing

1.2 Important for translations

This original installation and operating manual was written in US-English. The other available languages are translations of the US-English version. You can get the original installation and operating manual by scanning the QR code:



<http://some4.me/org-pro-plus-revb>

1.3 Description of the product type

The opener has been constructed using state-of-the-art technology and according to recognized technical regulations and is subject to the UL325 standards. The opener is fitted with a radio receiver. Optionally available accessories are also described.

1.4 Target groups of the installation and operating manual

The installation and operating manual must be read and observed by everyone assigned with one of the following tasks:

- Unloading and in-house transport
- Unpacking and installation
- Initial operation
- Setting
- Usage
- Care and maintenance
- Testing
- Troubleshooting
- Disassembly and disposal

1.5 Explanation of warning symbols and instructions in the installation and operating manual

The warnings in this installation and operating manual are structured as follows.



Hazard symbol



Signal word

Type and source of hazard

Consequences of the hazard

► Preventing and avoiding the hazard

The hazard symbol indicates the hazard. The signal word is linked to a hazard symbol. The hazard is classified into three classes depending on its danger:

DANGER
WARNING
CAUTION

There are three different classifications of hazards.



DANGER

Describes an immediate danger that leads to serious injury or death.

Describes the consequences of the danger to you or other persons.

► Follow the instructions for avoiding or preventing the danger.



WARNING

Describes a potential danger of serious injury or death.

Describes the potential consequences of the danger to you or other persons.

► Follow the instructions for avoiding or preventing the danger.



CAUTION

Describes a potential danger of a hazardous situation

Describes the potential consequences of the danger to you or other persons.

► Follow the instructions for avoiding or preventing the danger.

The following symbols are used for notes and information:



NOTE

Describes additional information and useful notes for correct use of the opener without endangering persons.

If it is not observed, property damage or faults to the opener or door may occur.



INFORMATION

Describes additional information and useful tips. Functions for optimum usage of the opener are described.

1. About this installation and operating manual



INFORMATION



This symbol indicates that all components that have been taken out of service must not be disposed of with household waste, as they contain hazardous substances. The components must be disposed of correctly at an authorized recycling centre. The local and national regulations must be observed.



INFORMATION



This symbol indicates that all old battery packs and batteries must not be disposed of with household waste. Old battery packs and batteries contain hazardous substances. These must be disposed of properly at municipal collection points or in the containers provided by dealers. The local and national regulations must be observed.



Continue reading the installation and operating manual for more information.



Disconnect the opener from the mains voltage.



Connect the opener to the mains voltage.



Symbol refers to factory settings.



Symbol refers to SOMlink and a WLAN-enabled terminal.

1.6 Special warnings, hazard symbols and mandatory signs

To specify the source of danger more precisely, the following symbols are used together with the above-mentioned hazard symbols and signal words. Follow the instructions to prevent a potential hazard.



! DANGER

Danger due to electric current!

Contact with live parts may result in electric current flowing through the body. Electric shock, burns or death may result.

- Installation, testing and replacement of electrical components may only be carried out by an **electrician**.



! DANGER

Danger of entrapment!

Persons may be trapped inside the garage. If trapped persons cannot free themselves, severe injury or death may result.

- A second entrance, a release lock for unlocking from the outside must be installed!



! DANGER

Danger of falling!

Unsafe or defective ladders may tip and cause serious or fatal accidents.

- Use only a non-slip, stable ladder.



! WARNING

Danger due to falling parts!

Parts of the door may become detached and fall. If persons or animals are hit, this may cause serious injury or death.

- The door must not bend, rotate or twist when opening and closing.



! WARNING

Danger of entrapment!

Persons or animals in the movement area of the door may be trapped and pulled along with the door. Severe injuries or death may result!

- Keep clear of moving doors.



! WARNING

Danger of crushing and shearing!

If the door moves with persons or animals in the movement area, crushing and shearing injuries may be caused by the mechanism and safety edges of the door.

- Never put your hand near the door when it is moving or near moving parts.



! WARNING

Danger of tripping and falling!

Unsafely positioned parts such as packaging, opener parts or tools may cause trips or falls.

- Keep unnecessary items away from the installation area.



! WARNING

Danger due to optical radiation!

Looking into an LED at short range for an extended period may cause optical glare. This will temporarily reduce vision. This may cause serious or fatal injury.

- Do not look directly into an LED.



! WARNING

Danger due to hot parts!

After frequent operation, parts of the carriage or the control unit may become hot. If the cover is removed and hot parts are touched, they may cause burns.

- Allow the opener to cool before removing the cover.

1. About this installation and operating manual

The following mandatory signs inform the user that actions are required. The requirements described must be complied with.

	WARNING Risk of eye injury! Chips flying when drilling may cause serious injuries to eyes and hands. ► Wear safety glasses.
	WARNING Risk of injury in the head region! Impact with suspended objects may cause serious abrasions and cuts. ► Wear a safety helmet.
	CAUTION Risk of injury to hands! Rough metal parts may cause abrasions and cuts when picked up or touched. ► Wear safety gloves.

1.7 Information regarding the depiction of text

Stands for directions for an action

⇒ Stands for the results of the action

Lists are shown as a list of actions:

- List 1
- List 2

1, A Number or letter in the figure refers to a number in the text.

1 A

Important text items in directions for actions are emphasized in **bold** type.

References to other chapters are in bold type and set in “quotation marks”.

1.8 Intended use of the opener

The opener is intended exclusively to open and close doors. Any other use does not constitute intended use. The manufacturer accepts no liability for damage resulting from use other than the intended use. The user bears the sole responsibility for any risk involved. It also voids the warranty.

Any changes to the opener must be made with original **SOMMER** accessories only and only to the extent described.

Doors automated with this opener must comply with all valid international and domestic standards, directives and regulations. Examples include UL 325. The regulations valid in the respective country must be observed.

The opener may only be used:

- as specified in this installation and operating manual
- in good technical condition
- with attention to safety and hazards by trained users

1.9 Improper use of the opener

Any other use or additional use that has not been described in Chapter “1.8 Intended use of the opener” constitutes improper use. The user bears the sole responsibility for any risk involved.

The manufacturer's warranty will be voided by:

- damage caused by other use and improper use
- use with defective parts
- unauthorized modifications to the opener
- modifications and non-approved programming of the opener and its components

The door must not be part of a fire protection system, an evacuation path or an emergency exit that automatically closes the door in the event of fire. Installation of the opener will prevent automatic closing.

Observe the local building regulations.

The opener may not be used in:

- areas with explosion hazard
- very salty air
- aggressive atmosphere, including chlorine

1.10 Qualifications of personnel

People under the influence of drugs, alcohol, or medications that can influence their ability to react may **not** work on the opener.

See www.sommer-usa.com for:

- handover protocol for the opener

Qualified specialist for installation, commissioning and disassembly

This installation and operating manual must be read, understood and complied with by a qualified specialist who installs or performs maintenance on the opener.

Work on the electrical system and live parts may be performed only by a **trained electrician**.

The installation, commissioning and disassembly of the opener may only be performed by a qualified specialist. A qualified specialist is a person commissioned by the installer.

The qualified specialist must instruct the user:

- on the operation of the opener and its dangers
- on the handling of the emergency release
- on regular maintenance which the user can execute

The user must be informed that other users must be instructed on the operation of the opener, its dangers as well as the emergency release.

The user must be informed about which work must only be performed by a qualified specialist:

1. About this installation and operating manual

- installation
- settings
- regular maintenance
- repairs

This installation and operating manual must be given to the user.

1.11 User

The user must note that the installation and operating manual for the door system must be given to him/her.

The user is responsible for:

- the intended use of the opener
- its good condition
- operation
- instructing all users how to use the door system and in the associated hazards
- care and maintenance
- inspection and maintenance by a qualified specialist
- troubleshooting in case of faults by a qualified specialist

The user must keep this installation and operating manual ready for consultation in the vicinity of the door system.

The opener must not be used by children or persons with restricted physical, sensory or mental capacity or who lack experience and knowledge. All users must be specially instructed and have read and understood the installation and operating manual.

Children must never play with or use the opener, even under supervision. Children must be kept clear of the opener. Transmitters or other control devices must never be given to children.

The user will observe the accident prevention regulations and the applicable standards in Germany. In other countries, the user must comply with the applicable national regulations.

The guideline "Technical regulations for workplaces ASR A1.7" of the German committee for workplaces (AS-TA) is applicable for commercial use. The guidelines described must be observed and complied with. This applies for the use in Germany. In other countries the user must comply with the applicable national regulations.

2. General safety instructions

2.1 Basic safety instructions for operation

Follow the basic safety instructions listed below.

The opener must not be used by children or persons with restricted physical, sensory or mental capacity or who lack experience and knowledge. All users must be specially instructed and have read and understood the installation and operating manual.

Children must never play with or use the opener, even under supervision. Children must be kept clear of the opener. Transmitters or other control devices must never be given to children.



⚠ DANGER

Danger if not observed!

If safety instructions are not observed, serious injury or death may result.

- ▶ All safety instructions must be observed to prevent serious injury or death.



⚠ DANGER

Danger due to electric current!

Contact with live parts may result in electric current flowing through the body. Electric shock, burns or death may result.

- ▶ Installation, testing and replacement of electrical components may only be carried out by an **trained electrician**.
- ▶ The opener must be disconnected from the power supply before working on the opener.
- ▶ If a battery pack is used, it must be disconnected.
- ▶ Then check that the opener is disconnected from the power supply.



⚠ DANGER

Danger due to use of the opener with incorrect setting or when it is in need of repair!

If the opener is used despite incorrect settings or if it is in need of repair, severe injury or death may result.

- ▶ The opener may only be used with the required settings and in the proper state.



⚠ DANGER

Danger of hazardous substances!

Improper storage, use or disposal of battery packs, batteries and opener components are dangerous for the health of humans and animals. Serious injury or death may result.

- ▶ Battery packs and batteries must be stored out of the reach of children and animals.
- ▶ Keep batteries and battery packs away from chemical, mechanical and thermal influences.
- ▶ Do not recharge batteries.
- ▶ Old batteries, old battery packs and opener components may not be disposed of with household waste. They must be disposed of properly.



⚠ DANGER

Danger of entrapment!

Persons may be trapped inside the garage. If trapped persons cannot free themselves, severe injury or death may result.

- ▶ Check the function of the emergency release at **monthly intervals**, particularly from inside in the door CLOSE end position and if necessary, also from outside.
- ▶ Faults must be repaired without delay.



⚠ WARNING

Danger due to projecting parts!

Door leaves or other parts must not protrude into roads or public pathways. This also applies while the door is moving.

Persons or animals may be seriously injured.

- ▶ Parts must not project into roads or public footpaths.



⚠ WARNING

Danger due to falling parts of doors!

Actuating the emergency release can lead to uncontrolled door movement if

- springs are weakened or broken.
 - the door has not been optimally weight-balanced.
- Falling parts may cause a hazard. Severe injuries or death may result.
- ▶ Check the weight balance of the door at regular intervals.
 - ▶ Pay attention to the movement of the door when the emergency release is actuated.
 - ▶ Keep clear of the movement area of the door.



⚠ WARNING

Danger of entrapment!

Persons or animals in the movement area of the door may be trapped and pulled along with the door. Severe injuries or death may result.

- ▶ Keep clear of the moving door.



⚠ WARNING

Danger of crushing and shearing!

If the door moves with persons or animals in the movement area, crushing and shearing injuries may be caused by the mechanism and safety edges of the door.

Only use the opener in direct view of the door.

- ▶ Always keep the moving door in sight.
- ▶ Persons or animals must not be in the range of movement of the door.
- ▶ Never put your hand near the door or moving parts when it is moving. In particular, do not reach into the moving push arm.
- ▶ Do not reach into the ceiling mounting unit when the carriage is running along the rail.
- ▶ Do not drive through the door until it has been fully opened.
- ▶ Store the transmitter so that accidental operation, e.g., by children or animals, is impossible.

2. General safety instructions



! WARNING

Danger due to optical radiation!

Looking into an LED at short range for an extended period may cause optical glare. This may temporarily reduce vision. This may cause serious or fatal accidents.

► Do not look directly into an LED.



NOTE

The carriage is supplied with safety low voltage via the chain and the rail.

The use of oil or grease will greatly reduce the conductivity of the chain, rail and carriage. This may result in faults due to inadequate electrical contact.

The chain and rail are maintenance-free and must not be oiled or greased.



NOTE

Objects in the movement area of the door may be jammed and damaged.

Objects must not be in the range of movement of the door.

2.2 Additional safety information for the radio remote control

Follow the basic safety instructions listed below.



! WARNING

Danger of crushing and shearing!

The door can be actuated by radio.

If the door moves with persons or animals in the movement area, crushing and shearing injuries may be caused by the mechanism and safety edges of the door.

- The radio remote control may be used only if the door's movement can be viewed directly.
- Persons or animals must not be in the range of movement of the door.
- Store the transmitter so that accidental operation, e.g., by children or animals, is impossible.



NOTE

If the door is not in view and the radio remote control is actuated, objects in the movement area of the door may be jammed and damaged.

Objects must not be in the range of movement of the door.

The user of the radio system is not protected from faults due to other telecommunications equipment or devices. This includes radio-controlled systems that are licensed to operate in the same frequency range. If significant interference occurs, please contact your appropriate telecommunications office which has radio interference measuring equipment or radiolocation equipment.

For the Declaration of Conformity for the radio, see:

www.sommer-usa.com

3. Description of function and product

3.1 The opener and its mode of operation

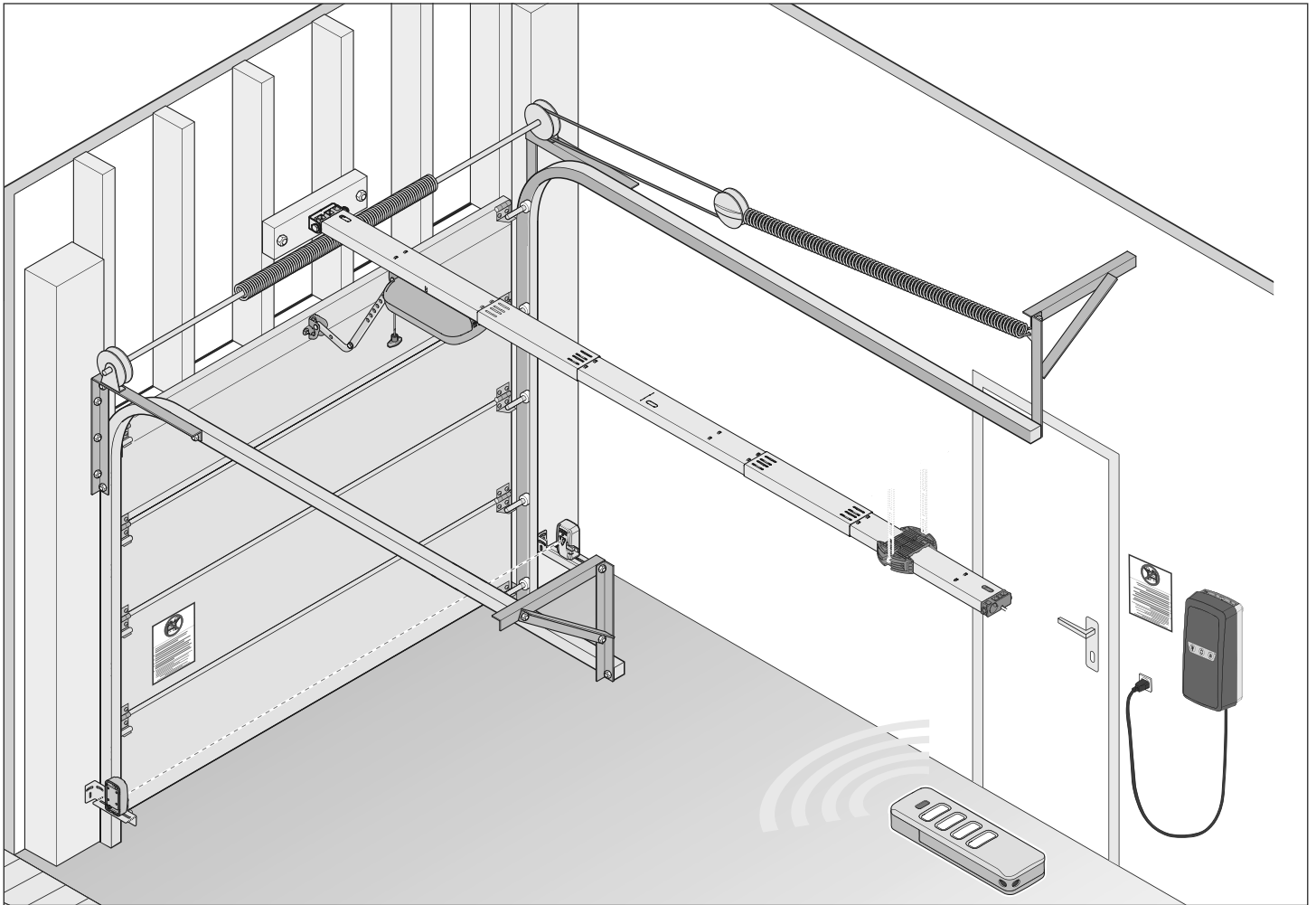


Fig. Door structure with opener

Sectional doors and other types of doors can be opened and closed with the electrically powered opener and its available accessories. The operator can be controlled, for example, with a handheld transmitter. The door can be opened and closed, locking and unlocking, with the membrane keypad of the wall control unit.

The rail is mounted on the ceiling and the lintel above the garage door. The carriage is attached to the door by a push arm. The carriage moves along the rail on a spring-mounted chain and opens or closes the door. The transmitter can be stored in a holder in the garage or in the vehicle.

A plug-in light for the wall control unit (Lumi) is included. It is automatically activated during operation.

For more information on using the opener with different types of doors or accessories, contact your qualified dealer.

3.2 Safety equipment

The opener stops and reverses slightly if it encounters an obstacle. This prevents injury and damage to property. The door will be completely opened.

If the power fails, the door can be opened from the inside by an emergency release or from the outside with a Bowden wire or emergency release lock. For more information, ask your qualified dealer.

3. Description of function and product

3.3 Product designation

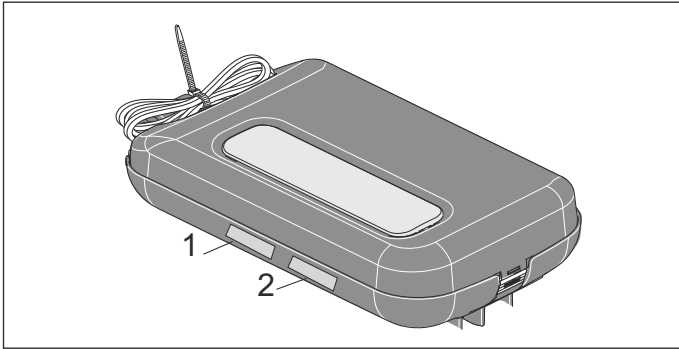


Fig. Carriage with labels (1, 2)

The following labels are attached to the carriage:

Warning label (1)

Type label (2) with the following information:

- exact type designation
- item number
- date of manufacture with month and year
- serial number

In case of questions or service, please supply the exact type designation, the date of manufacture and the serial number.

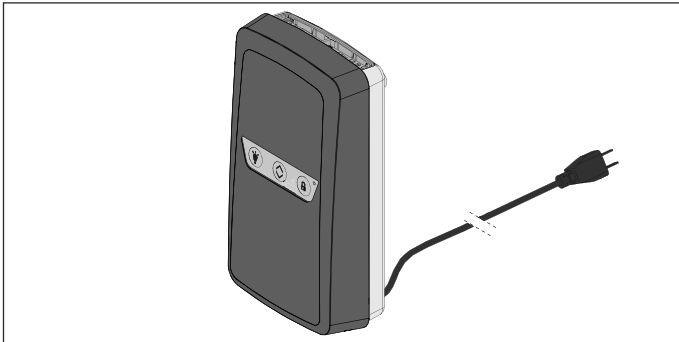


Fig. Control unit with labels

The label on the wall control unit provides more information about the connections. Explanation of symbols in the installation and operating manual

Tool symbols

These symbols refer to the use of tools required for installation.



Philips screwdriver



Wood drill 3/16"



concrete drill 1/4"



Wrench 1/2", 3/8"



Ratchet driver 1/2", 3/8"

Other symbols



Drilling depth



Audible locking noise or click

3. Description of function and product

3.4 Product contents

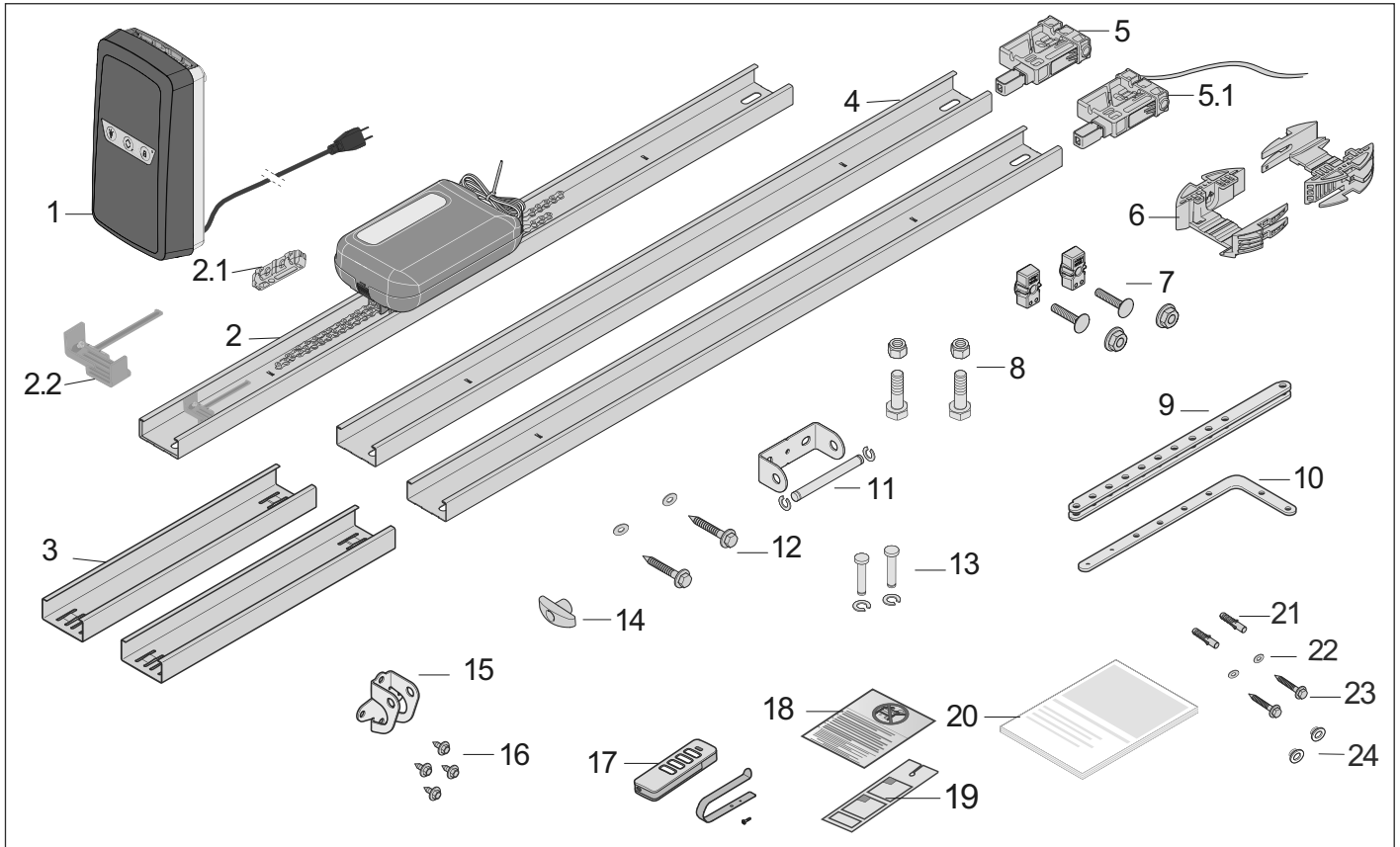


Fig. Product contents for the opener

- | | |
|------------------------------------------------------------------------------------------------|-------------------------------------------------------------------------|
| 1) Wall control unit | 13) 2 pins with locking c-clip for door arms |
| 2) Rail, chain and carriage, pre-assembled | 14) Emergency release handle |
| 2.1) Isolator, pre-assembled on the chain | 15) Door bracket |
| 2.2) Limit stop, pre-assembled on the rail | 16) 4 self-drilling screws 1/4" (wrench size 3/8") for the door bracket |
| 3) Connecting sleeve, 2x | 17) Transmitter, preprogrammed, with visor clip, packaged separately |
| 4) Rail, 2x | 18) Warning label |
| 5) Plug-in unit, pre-assembled | 19) Warning label for emergency release |
| 5.1) Plug-in unit, pre-assembled , with control cable, 2-wire, approx. 5 m | 20) Installation and operating manual |
| 6) Ceiling bracket, 2-parts | Mounting for the wall control unit: |
| 7) Ceiling bracket hardware | 21) 6 mm wall plugs, 1/4", 2x |
| 8) 2 bolts M8 x 20 (wrench size 1/2") with 2 self-locking nuts M8 (wrench size 1/2") | 22) Washer, 2x |
| 9) Door arm | 23) Screw \varnothing 4 x 50 mm, 2x |
| 10) Curved door arm | 24) Sealing caps, 2x |
| 11) Header bracket and pin with 2 locking c-clips | |
| 12) 2 screws 8 x 60 mm (wrench size 1/2") and 2 washers 5/16" for the attachment to the header | |

When unpacking, make sure that all items are included in the packages. If anything is missing, contact your qualified dealer.

The actual content may vary depending on the specifications.

3. Description of function and product

3.5 Product contents for safety sensor kit

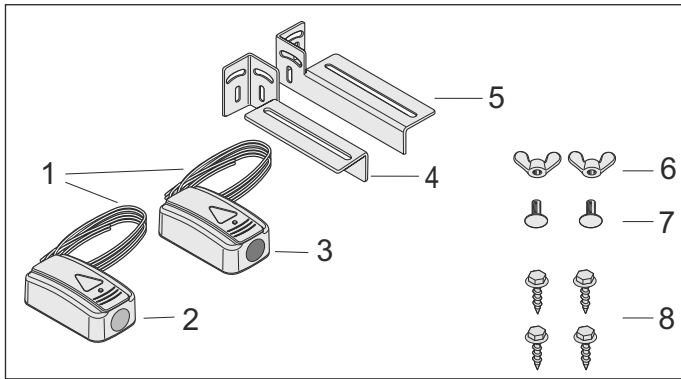


Fig. Product contents for safety sensor kit

- 1) 2 wires, length 32' 9" (10 m)
- 2) 1 transmitter safety sensor (green sticker)
- 3) 1 receiver safety sensor (red sticker)
- 4) 1 mounting bracket left
- 5) 1 mounting bracket right
- 6) 2 wing nuts M6
- 7) 2 carriage bolts M6
- 8) 4 screws 3/8"

3. Description of function and product

3.6 Dimensions

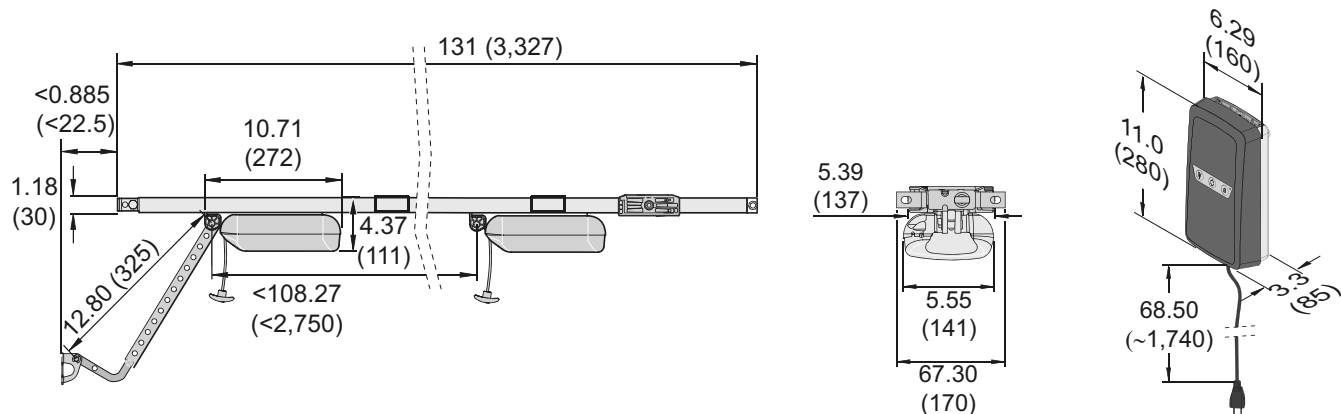


Fig. All dimensions are in inches (mm)

3.7 Technical data

	2060 pro+	2080 pro+	2110 pro+
Rated voltage	AC 120 V		
Rated frequency	60 Hz		
Number of programmable remote buttons	40		
Duty cycle	40 %		
Emission value according to operating environment	<59 dBA – opener only		
IP code	NEMA1, IP21		
Protection class	class 2		
Standard door height	7' and 8' doors (<2,750 mm)		
Max. door height with extensions	24 ft. (up to 2 x 3.59 ft., 3 x 3.59 ft., 4 x 3.59 ft.) (7.10 m /up to 2 x 1,096 mm, 3 x 1,096 mm, 4 x 1,096 mm)		
Speed*	9.4 inch/sec. (240 mm/s)	8.3 inch/sec. (210 mm/s)	7 inch/sec. (180 mm/s)
Max. traction and pressure force	600 N (0.75 HP)	800 N (1 HP)	1,100 N (1.25 HP)
Current consumption**	1.0 A	1.3 A	1.5 A
Standby	<3 W		


* Depending on door and the operating conditions

** Values apply without lighting, Lumi pro+

3. Description of function and product

3.8 Information about transmitter

The standard version includes 2 transmitters with batteries. The radio frequency for the transmitters is 922,5 MHz.



WARNING

Danger due to battery!

If swallowed, it could cause severe injury or death in just 2 hours.

- ▶ Store batteries in a safe place.
- ▶ Seek medical attention immediately.

See also the separate installation and operating manual for the transmitter.

NOTICE:

This device complies with Part 15 of the FCC Rules and contains license-exempt transmitter(s)/receiver(s) that comply with Innovation, Science and Economic Development Canada’s licence-exempt RSS standard(s).

- (1) this device may not cause harmful interference, and
- (2) this device must accept any interference received, including interference that may cause undesired operation.

Changes or modifications made to this equipment not expressly approved by SOMMER Antriebs- und Funktechnik GmbH may void the FCC authorization to operate this equipment.

NOTE:

This equipment has been tested and found to comply with the limits for a Class B digital device, pursuant to Part 15 of the FCC Rules. These limits are designed to provide reasonable protection against harmful interference in a residential installation. This equipment generates, uses and can radiate radio frequency energy and, if not installed and used in accordance with the instructions, may cause harmful interference to radio communications. However, there is no guarantee that interference will not occur in a particular installation. If this equipment does cause harmful interference to radio or television reception, which can be determined by turning the equipment off and on, the user is encouraged to try to correct the interference by one or more of the following measures:

- Reorient or relocate the receiving antenna.
- Increase the separation between the equipment and receiver.
- Connect the equipment into an outlet on a circuit different from that to which the receiver is connected.
- Consult the dealer or an experienced radio/TV technician for help.

NOTA:

L’émetteur/récepteur exempt de licence contenu dans le présent appareil est conforme aux CNR d’Innovation, Sciences et Développement économique Canada applicables aux appareils radio exempts de licence.

L’exploitation est autorisée aux deux conditions suivantes:

- (1) l’appareil ne doit pas produire de brouillage, et
- (2) l’appareil doit accepter tout brouillage radioélectrique subi, même si le brouillage est susceptible d’en compromettre le fonctionnement.

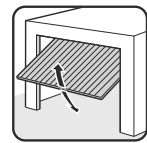
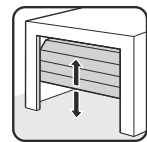
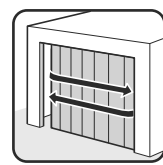



INFORMATION

Battery Notice

- Always purchase the correct size and grade of battery most suitable for the intended use.
- Clean the battery contacts and also those of the device prior to battery installation.
- Remove batteries from equipment which is not to be used for an extended period of time.
- Remove batteries if spent or if product is to be left unused for a long time.

3.9 Door types and accessories

Door type	Accessories
	One piece door
	Sectional door with one rail
	Sectional door with low headroom
	Side-opening door, side-opening sectional door
	Hinged double door
	Hinged double door fitting

Custom fittings are not included in the product contents.

For more information on accessories such as rail extensions, additional locking mechanism, custom fittings or different transmitters, contact your qualified dealer or see: www.sommer-usa.com

4. Tools and protective equipment

4.1 Required tools and personal protective equipment

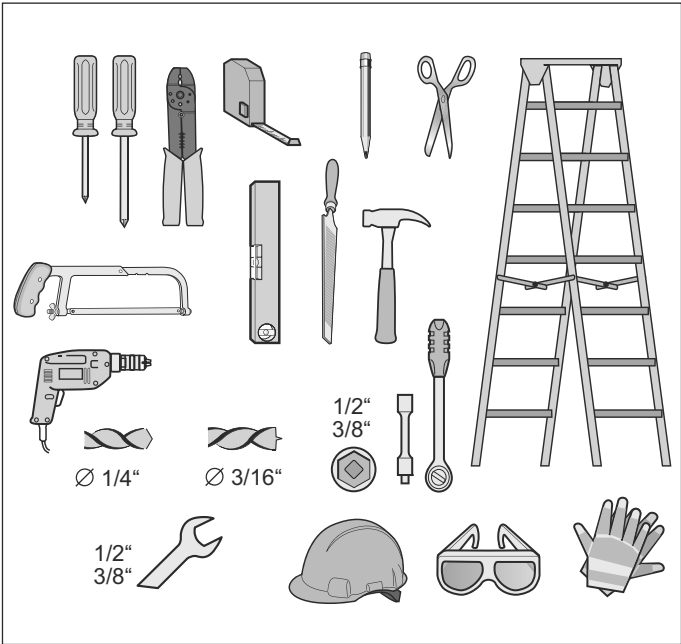


Fig. Recommended tools and personal protective equipment for installation

You will require the tools shown above to assemble and install the opener. Lay out the required tools beforehand to ensure fast and safe installation.

WARNING
Risk of eye injury!
Chips flying when drilling may cause serious injuries to eyes and hands.
► Wear safety glasses when drilling.

WARNING
Risk of injury in the head region!
Impact with suspended objects may cause serious abrasions and cuts.
► Wear a safety helmet when installing suspended parts.

CAUTION
Risk of injury to hands!
Rough metal parts may cause abrasions and cuts when picked up or touched.
► Wear safety gloves for work such as deburring.

Wear your personal protective equipment. This includes safety glasses, safety gloves and a safety helmet.

5. Installation

5.1 IMPORTANT INSTALLATION INSTRUCTIONS

Please observe and comply with all instructions to ensure a safe installation.

People under the influence of drugs, alcohol, or medications that can influence their ability to react may **not** work on the opener.

The opener may only be installed by a qualified specialist. This installation and operating manual must be read, understood and complied with by the qualified specialist who installs the opener.

WARNING

WARNING – To reduce the risk of severe injury or death:

1. READ AND FOLLOW ALL INSTALLATION INSTRUCTIONS.
2. Install only on a properly operating and balanced garage door. An improperly balanced door has the potential to inflict severe injury. Have a qualified service technician make repairs to cables, spring assemblies, and other hardware before installing the operator.
3. Remove all pull ropes and remove or make inoperative all locks connected to the garage door before installing operator.
4. Where possible, install the door opener 7 feet or more above the floor. For products equipped with an emergency release, mount the emergency release within reach, but at least 6 feet above the floor and avoiding contact with vehicles to avoid accidental release.
5. For products equipped with a manual release, instruct the end user on the operation of the manual release.
6. Do not connect the door operator to source of power until instructed to do so.
7. Locate the control button: (a) within sight of the door, (b) at a minimum height of 1.53 m (5 ft) above floors, landings, steps or any other adjacent walking surface so small children are not able to reach it, and (c) away from all moving parts of the door.
8. Install the Entrapment Warning Label next to the control button in a prominent location. Install the Emergency Release Marking. Attach the marking on or next to the emergency release.
9. After installing the opener, the door must reverse when it contacts a 1-1/2-inch high object (or a 2 by 4 board laid flat) on the floor.

10. "WARNING: To reduce the risk of injury to persons – only enable the unattended operation function when installed with a sectional door."

WARNING

There is a possible risk of injury or death if a door does not fulfill the following conditions. The opener may only be installed when the following installation requirements and installation dimensions are met.



DANGER

Danger if not observed!

If safety instructions are not observed, serious injury or death may result.

- ▶ All safety instructions must be observed to prevent serious injury or death.



DANGER

Danger of falling!

Unsafe or defective ladders may tip and cause serious or fatal accidents.

- ▶ Use only a non-slip, stable ladder.
- ▶ Ensure that ladders are safely positioned.



DANGER

Danger of entrapment!

Persons may be trapped inside the garage. If trapped persons cannot free themselves, severe injury or death may result.

- ▶ Check the function of the emergency release at **monthly intervals**, particularly from inside in the door CLOSE end position and if necessary, also from outside..
- ▶ A second entrance, a release lock for unlocking from the outside must be installed!



WARNING

Danger due to falling parts of doors!

If a door is incorrectly balanced, springs may break suddenly. Falling door parts may cause serious injury or death.

- ▶ The door must be stable.
- ▶ The door must not bend, rotate or twist when opening and closing.
- ▶ The door must move easily in its rails.



WARNING

Danger due to falling ceiling and wall parts!

The opener cannot be installed correctly if ceiling and walls are unstable or if unsuitable fastening materials are used. Persons or animals may be struck by falling parts of the wall, ceiling or opener. Severe injuries or death may result.

- ▶ Walls and ceiling must be stable.
- ▶ Only use permissible fastening materials appropriate for the supporting surface.

5. Installation



! WARNING

Danger of entrapment!

Loose clothing or long hair may be trapped by moving parts of the door. Severe injuries or death may result.

- ▶ Keep clear of the moving door.
- ▶ Wear tight-fitting clothing.
- ▶ Wear a hairnet over long hair.



! WARNING

Danger of crushing and shearing!

If the door moves with persons or animals in the movement area, crushing and shearing injuries may be caused by the mechanism and safety edges of the door.

- ▶ Only use the opener in direct view of the door.
- ▶ Always keep the moving door in sight.
- ▶ Persons or animals must not be in the range of movement of the door.
- ▶ Never put your hand near the door or moving parts when it is moving. In particular, do not reach into the moving push arm.
- ▶ Do not reach into the ceiling mounting unit when the carriage is running along the rail.
- ▶ Do not drive through the door until it has been fully opened.



! WARNING

Danger of tripping and falling!

Unsafely positioned parts such as packaging, opener parts or tools may cause trips or falls.

- ▶ Keep unnecessary items away from the installation area.
- ▶ Place all parts where no persons are likely to trip or fall over them.
- ▶ General workplace guidelines must be observed.



! WARNING

Risk of eye injury!

Chips flying when drilling may cause serious injuries to eyes and hands.

- ▶ Wear safety glasses when drilling.



! WARNING

Risk of injury in the head region!

Impact with suspended objects may cause serious abrasions and cuts.

- ▶ You must wear a safety helmet when installing suspended parts.



! CAUTION

Risk of injury to hands!

Rough metal parts may cause abrasions and cuts when picked up or touched.

- ▶ Wear safety gloves when deburring.

→ NOTE

If the ceiling and walls are not stable, parts of the ceiling and wall or the opener may fall. Objects may be damaged.

Ceiling and walls must be stable.

→ NOTE

To prevent damage to the door or opener, use only approved fastening materials such as wall plugs or screws. The fasteners must match the material of the ceiling and walls. This applies particularly for prefabricated garages.



INFORMATION

Ask your qualified dealer if you require additional installation accessories for different installation or attachment situations.

5.2 Installation requirements

The installation of the opener cannot compensate for a poorly installed or defective installation of the door. Only install the opener on a correctly aligned and easy-running door. Ask your qualified dealer for advice. An improperly aligned door can cause serious injury. The door must be stable, i.e. when opening and closing, it must not bow, sag or twist because high operational forces act on the door during opening and closing. Reinforce lighter doors made out of plastic or aluminum if necessary prior to the installation. Ask your qualified dealer for advice.

In all other cases, no additional weight-increasing parts may be attached to the door system or the opener. This can lead to dangerous situations such as, for example, breaking of the door mechanics or overloading the opener. The opener may only be installed in dry indoor rooms where there is no risk of explosion. The installation location must be protected against dust and splashed water. The opener may not be installed in areas that have an aggressive climate. Walls and ceiling must be solid and stable.

5. Installation

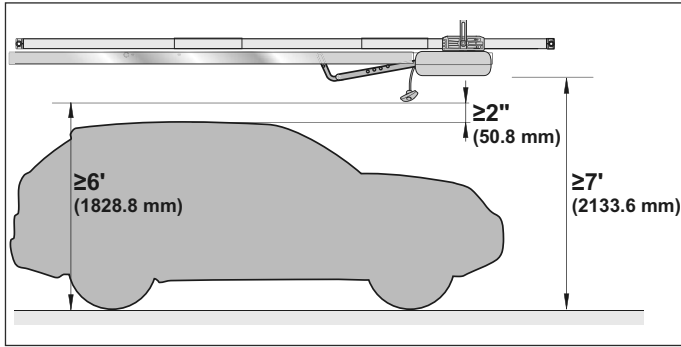


Fig. Distance to the vehicle



WARNING

Danger of being pulled in!

If the opener is not mounted at an adequate height, persons or animals within the movement range of the door may be caught up and dragged along. Serious or fatal injury may result.

- ▶ The opener must be mounted at a height of at least 7' (2.13 m).
- ▶ There must be a distance of at least 6 feet (1.83 m) between the emergency release cord and the floor and a distance of 2" (50.8 mm) between the emergency release cord and vehicles.

Attach the opener at a height of at least 7' (1.83 m) above the floor and a minimum distance of 2" (50 mm) to the vehicle including all attached vehicle accessories such as a roof rack etc.



DANGER

Danger due to electric current!

Contact with live parts may result in electric current flowing through the body. Electric shock, burns or death may result.

- ▶ Installation, testing and replacement of electrical components may only be carried out by an electrician.
- ▶ Do not connect the opener to the mains voltage until installation has been completed.

The opener must not be connected to the main power supply until installation has been completed, see chapter "9.1 Connection to a power outlet".

5.3 Preparation for installation

Removal of actuation parts



WARNING

Danger of entrapment!

Persons or animals may be trapped by straps or cords and pulled into the movement zone of the door. Severe injuries or death may result.

- ▶ Remove straps and cords used for mechanical actuation of the door.

Before installation, remove:

- All cords or straps necessary to operate the door by hand.

Disabling mechanical locks



NOTE

If locks or other locking systems are installed on a mechanical door, they may block the opener. This may cause faults to or damage the opener.

Before the installation of the opener, all mechanical locking systems must be disabled.

The mechanical lock on a door with an opener must be removed or disabled if it is not compatible with the opener.

One-piece door

Depending on the design of the door, it may be possible to open it approx. 2" (50 mm) by hand. Spring catches can be installed to prevent this. Spring catches also lock the door to the opener.

The spring catches are connected to the opener by a lock set. When the door is opened, the spring catches are unlocked first and then the opener opens the door.

Use the upgrade set depending on the type of installation. For more information on the upgrade set, contact your qualified dealer or see:

www.sommer-usa.com

Checking mechanical and weight compensation



WARNING

Danger due to falling parts of doors!

Wire ropes, spring sets or other fittings may break suddenly.

Persons or animals may be struck by falling parts of the door. Severe injuries or death may result.

- ▶ Wire ropes, spring sets and other door fittings must be inspected by qualified persons before installation.
- ▶ Malfunctions or defects must be eliminated before installing the opener.

5. Installation



⚠ WARNING

Danger of entrapment!

If the force setting is too high, persons or animals in the movement area of the door may be trapped and pulled along with the door. Severe injuries or death may result.

- ▶ The force setting is relevant to safety and must be carefully checked and if necessary adjusted by qualified specialists.



NOTE

If the weight compensation of the door is incorrectly adjusted, the opener may be damaged.

- The door must be stable.
- It must not bend, rotate or twist when opening and closing.
- The door must move easily in its rails.

1. Check the mechanism of the door, such as wire cables, spring sets and other fittings.

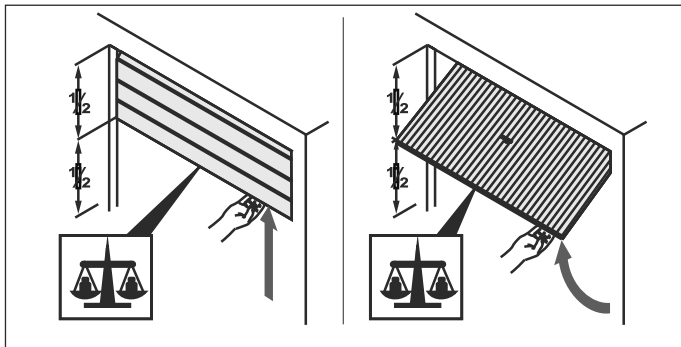


Fig. 2

2. Open door halfway.
 - ⇒ The door must remain in this position.
 - ⇒ The door must be moved easily by hand and must be balanced.

If the door moves upwards or downwards by itself, the weight compensation of the door must be adjusted.

Emergency release

In a garage without a separate entrance (e.g. wicket doors), the opener's emergency release must be operable from outside. The emergency release must be routed to be accessible from the outside. This can be done with an emergency release lock. Ask your qualified dealer.

5.4 Installation of the opener system

The opener may only be installed if the installation requirements and dimensions are correct.



NOTE

Specify the position for mounting the opener on the door. Manually open and close the door several times. The door must be moved easily.

The values are applicable for the entire life of the door. The door must also be maintained and inspected as specified by the door manufacturer.

Selecting the installation variant

The scope of delivery offers the option of implementing the following installation variants. Check your specific situation and select the optimum installation variant for you.

Installation situation A, B and C

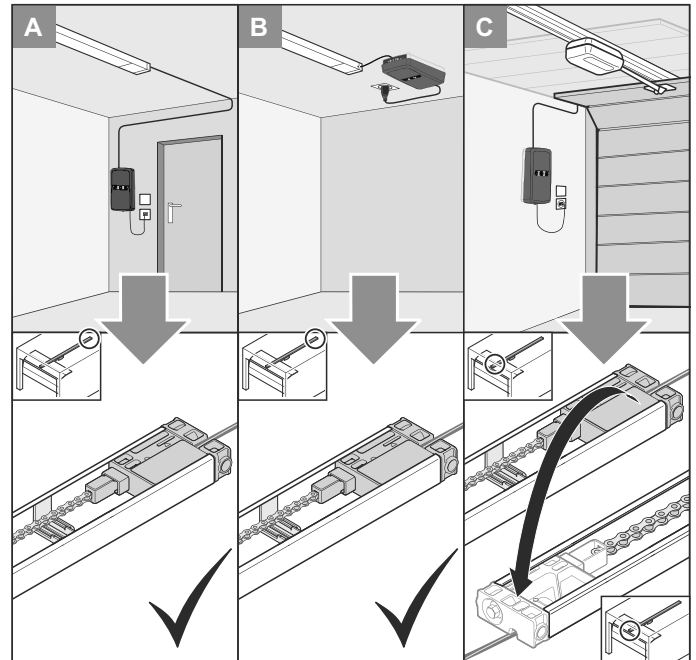


Fig. Installation situation and installation variants A, B and C

Installation variant A

This variant is selected if there is a separate entrance to the garage. The wall control unit is installed near a power outlet. The integrated membrane keypad of the wall control unit can be used to open the door when entering the garage or to close the door when leaving the garage. The control cable is led out at the rear end of the rail, see Chapter "5.5 Installing the opener system for installations variants A, B and C".

Installation variant B

This variant is selected when an existing device is being replaced by a new one and there is already a power outlet or other control lines such as buttons or photocells in this area. Here, the wall control unit is mounted on the ceiling in the rear area of the rail. The control cable of the plug-in unit is also led out at the rear end of the rail, see chapter "5.5 Installing the opener system for installations variants A, B and C".

5. Installation

Installation variant C

This version is selected when there is a power outlet which can be used for the wall control unit located near the door opening. Here, the control cable is led out at the front end of the rail. Plug the plug-in unit without control cable in on the opposite side of the rail, see chapter "5.5 Installing the opener system for installations variants A, B and C".

5.5 Installing the opener system for installations variants A, B and C

Installation situations A and B are described. For installation version C, the plug-in unit with cable must be inserted into the opposite side of the rail; see also the section "Variant C" in this chapter.

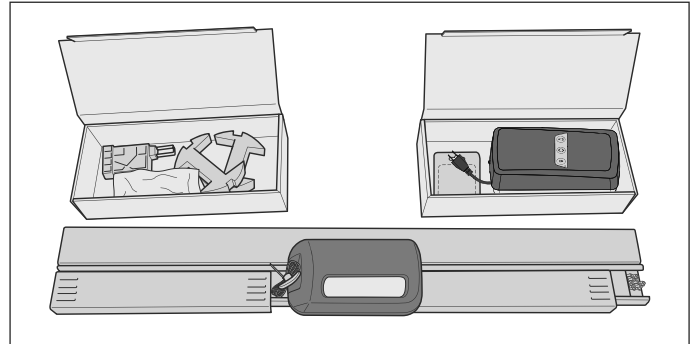


Fig. 1



CAUTION

Risk of injury to hands!

Rough metal parts may cause abrasions and cuts when picked up or touched.

► You must wear safety gloves when working with rough metal parts.

1. Open the package.
Place the two cartons in the package beside the rails and open them.
Check the product contents listed in this installation and operating manual.

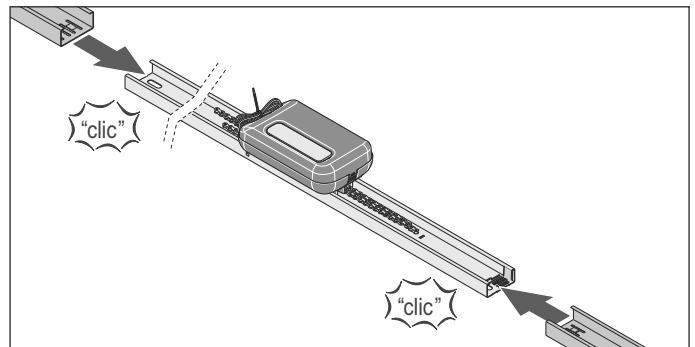


Fig. 2

2. Remove the two connecting sleeves beside the carriage and attach to the rail on the left and right.

5. Installation

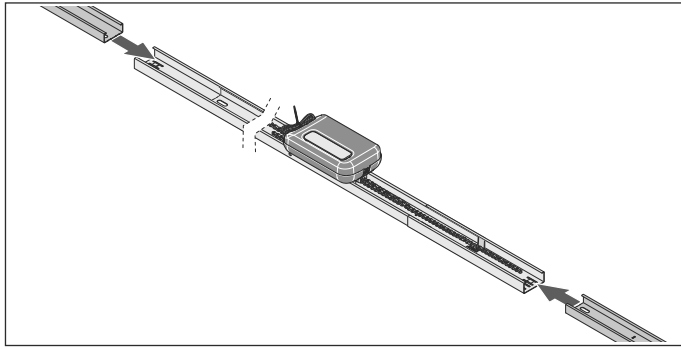


Fig. 3

3. Attach a rail to each of the connecting sleeve.

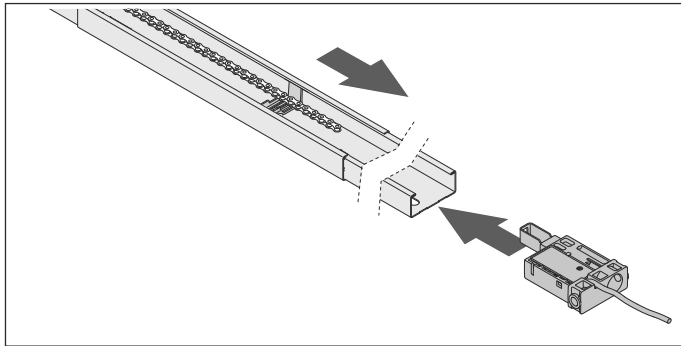


Fig. 4

4. Slide the **plug-in unit with control cable** into the rail behind the limit stop.
Lay the chain over the limit stop.

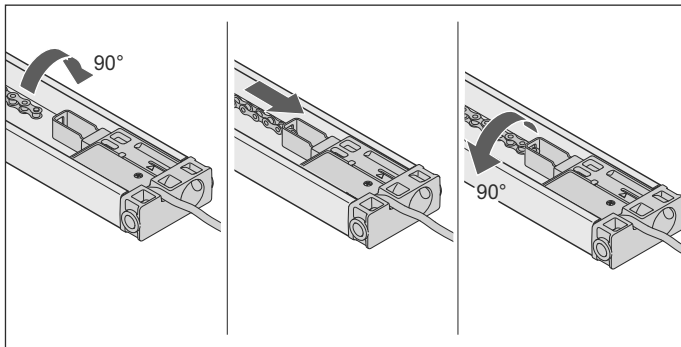


Fig. 5

5. Rotate the chain 90° and insert it into the chain holder of the **plug-in unit with control cable**.
Rotate the chain back 90°.

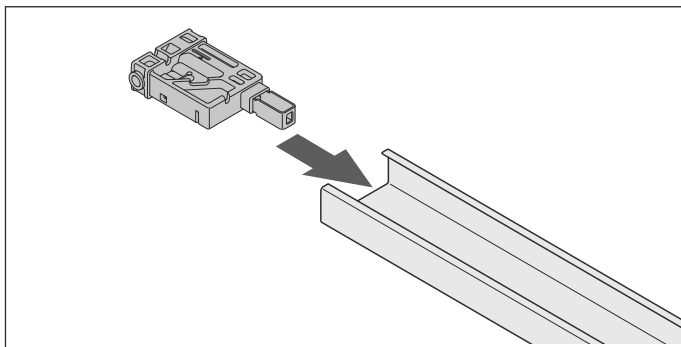


Fig. 6

6. Slide the plug-in unit without control cable in on the opposite side of the rail.

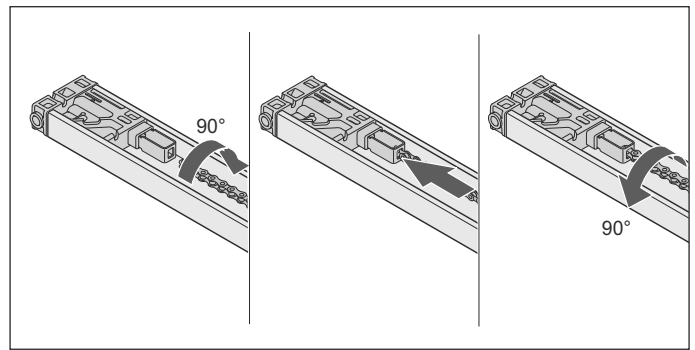


Fig. 7



NOTE

The chain must be parallel to the rail to prevent damage to the operator.

7. Rotate the chain 90° and insert it into the chain holder of the **plug-in unit without control cable**.

Rotate the chain back 90°.

⇒ The entire chain is attached.

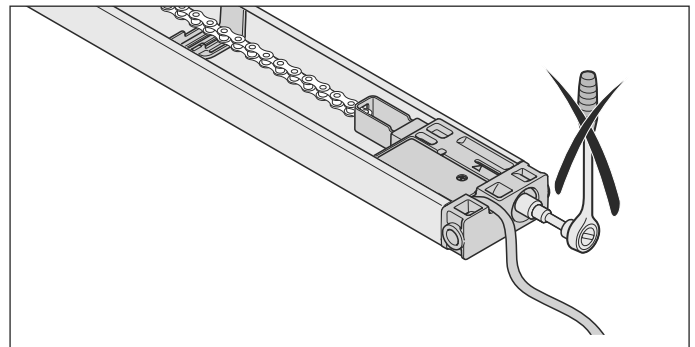


Fig. Plug-in unit with control cable



NOTE

The plug-in unit with control cable must not be tensioned.

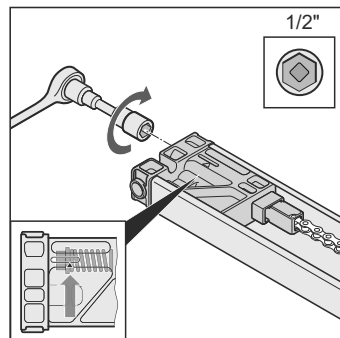


Fig. 8

8. Tension the chain to the mark on the **plug-in unit without control cable**, see **arrow** in the detailed view.

5. Installation

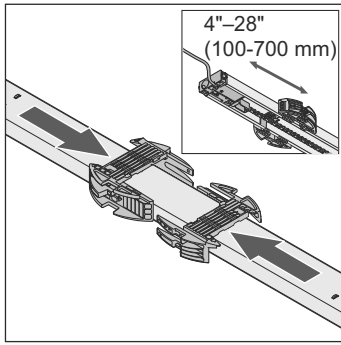


Fig. 10

9. Take the ceiling bracket apart. Set each bracket against the rail and slide the brackets. Turn the rail to install the ceiling bracket.

⇒ The rail is prepared for the remainder of the installation.

NOTE

- Depending on the door construction, the installation situation and the installation type, it should be checked whether a second ceiling suspension unit is necessary.

Variant C

The control cable is led out at the front end of the track.

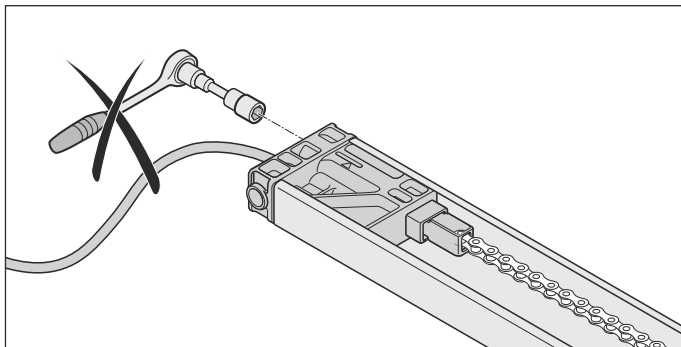


Fig. Plug-in unit with control cable

NOTE

The plug-in unit with control cable must not be tensioned.

5.6 Attachment to the door

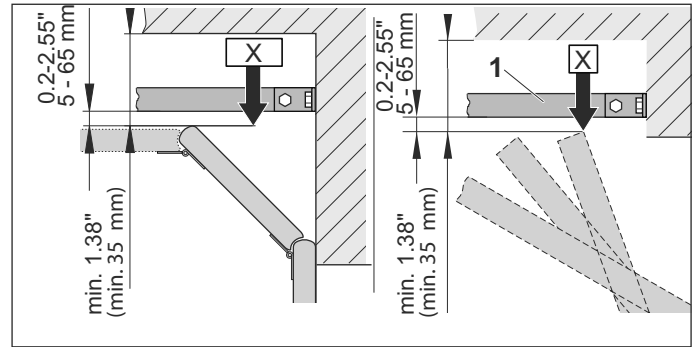


Fig. 1.1 Highest point for a door

X = Door's highest position

- Open the door and measure the distance between the top edge of the door and the ceiling where the clearance is the smallest. This point is called the door's highest position. This distance must be at least 1-3/8" (35 mm). The distance between this point and the lower edge rail (1) must amount to at least 3/16" (5 mm). If the clearance is less, the opener must be moved back and a longer push rod must be attached. Please ask your qualified dealer.

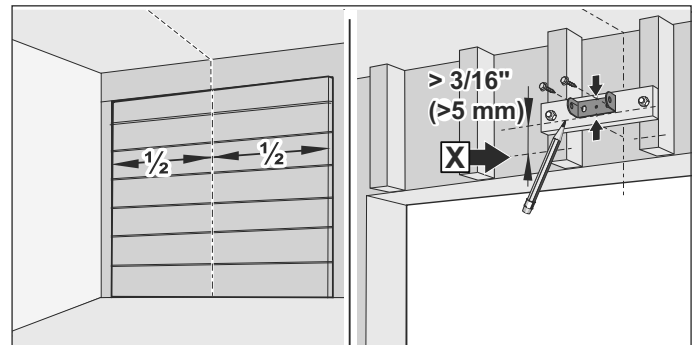


Fig. 2

Fig. 3

- Close the door.
Determine the door's center point and mark this on the header as a vertical guide line.
Where needed, an auxiliary construction must be mounted.
- Determine the horizontal guide line for the header bracket and mark it. It must be at least 3/16" (5 mm) from the door's highest position (X).
- Center the header bracket on the vertical guideline and mark the horizontal set of bracket holes.
- Drill two 1/4" pilot holes at the marked mounting points on the header (lintel). Pay attention to the material strength of the header.
- Fasten the bracket securely to the header with the hardware provided.

5. Installation

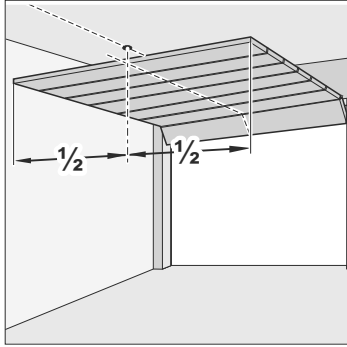


Fig. 7

7. Open the door.
Transfer the mark from the center of the door to the ceiling.
8. Close the door.
Position the opener on the garage floor below the header bracket. Have someone hold the opener if spring is in the way.

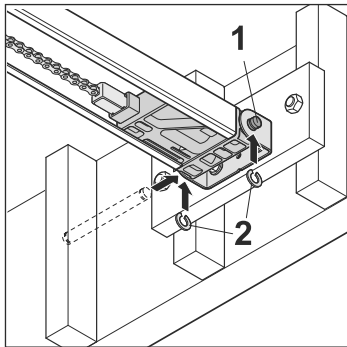


Fig. 9

9. Slide the rail into the header bracket and secure with the pin (1). Attach locking c-clips (2) to secure.

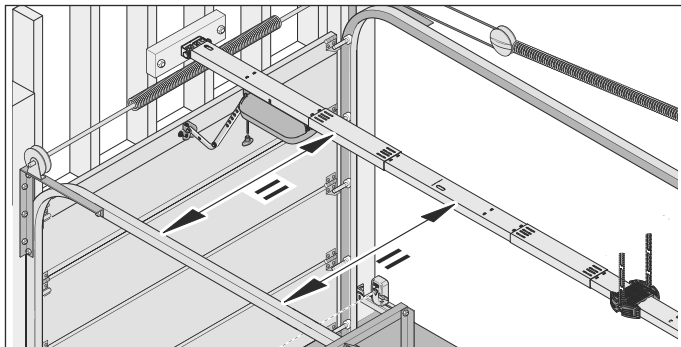


Fig. 10

NOTE

The opener must always be installed parallel to the rails or the door to prevent damage to the opener and the rails.

10. Align the opener parallel to the rails of the door.
Use the carton from the wall control unit to prevent scratches.



⚠ DANGER

Danger of falling!

Unsafe or defective ladders may tip and cause serious or fatal accidents.

► Use only a non-slip, stable ladder.

11. Raise the opener onto a ladder. You will need help at this point if the ladder is not tall enough.
12. Open the door all the way and rest the opener on the top section.

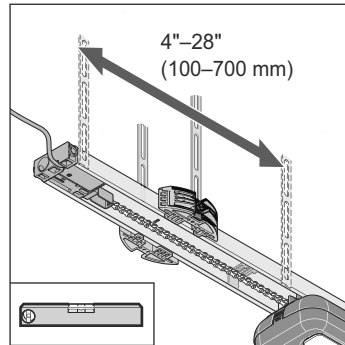


Fig. 13

13. Align the rail parallel to center of the door at the rear.
Align the ceiling bracket.
The distance between the wall control unit and the ceiling holder should be 4"-28" (100-700 mm).
Check the alignment of the rail with a spirit level if necessary.

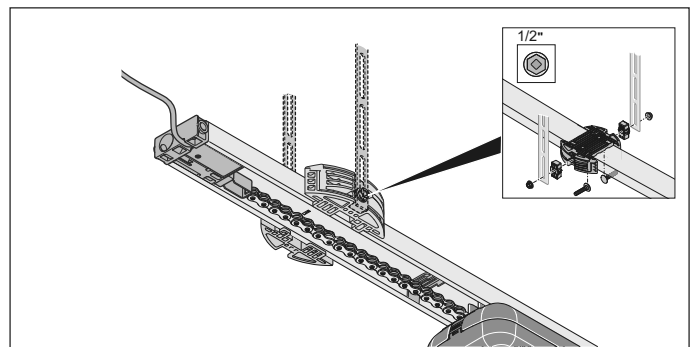


Fig. 14

14. On finished ceilings, attach a sturdy metal bracket to structural supports before installing the opener. This bracket and fastening hardware are not provided.
15. Measure the distance from the ceiling bracket to the structural support.
16. Cut two pieces of the hanging bracket to required lengths.
17. Attach one end of each hanging bracket to the support mounted to the ceiling.
18. Attach the other end of each hanging bracket to the ceiling bracket.

5. Installation

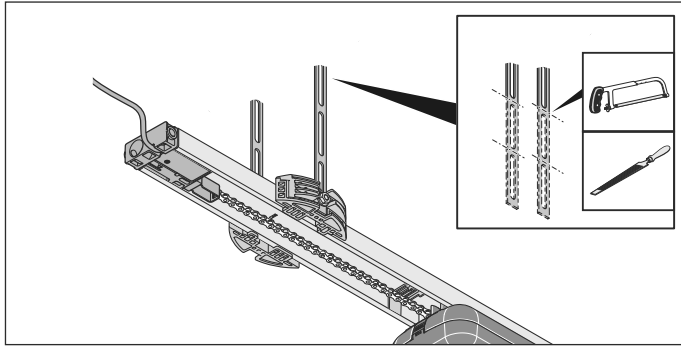


Fig. 19

19. Connect the ceiling holders to the ceiling with suitable fastening material.

⇒ The rail is attached to the ceiling.



CAUTION

Risk of injury to hands!

Rough, projecting metal parts may cause abrasions and cuts when picked up or touched.

- ▶ Projecting perforated strips must be sawn off and smoothed to prevent injury.
- ▶ Wear safety gloves when deburring.

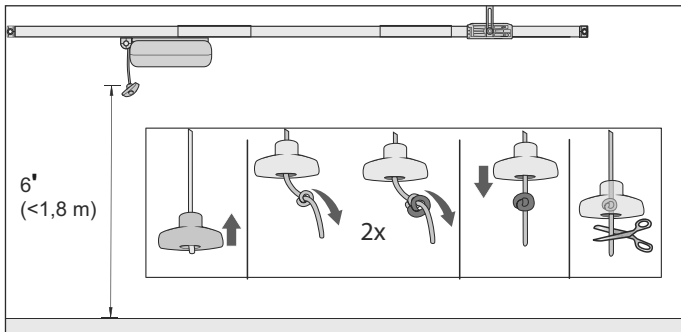


Fig. 20



WARNING

Danger of entrapment!

Persons or animals in the movement area of the door may be trapped in a loop of the emergency release handle and the door may be accidentally unlocked. Severe injuries or death may result.

- ▶ The included emergency release handle must be used.



NOTE

The emergency release handle may cause damage, e.g. scratches on the vehicle.

The distance between the garage floor and the emergency release cord must be less than 6' (<1,8 m).

The emergency release handle must be at least 2" (50 mm) from moving and fixed parts throughout its complete path.

20. Attach the emergency release handle to the emergency release cord.

Tie a knot at the end of the cord.

Tie another knot over the first one to produce one big knot. Push the emergency release handle towards the knot.

Shorten the cord if necessary.

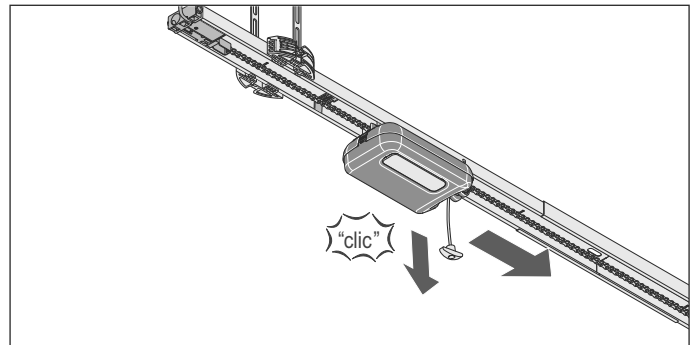


Fig. 21

21. Pull the emergency release handle once to unlock the carriage.

Slide the carriage forward to the door.

Close the door.

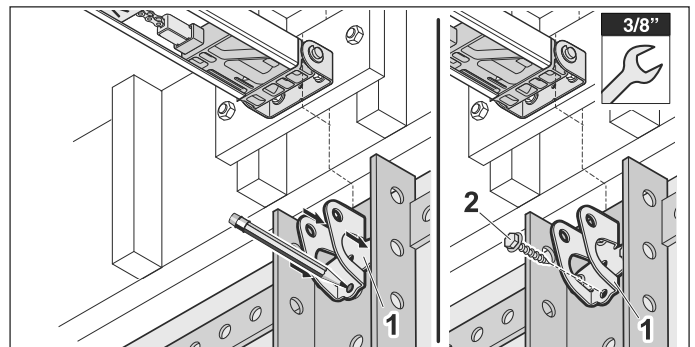


Fig. 22

Fig. 23



WARNING

Risk of injury in the head region!

Impact with suspended objects may cause serious abrasions and cuts.

- ▶ Wear a safety helmet when installing suspended parts.



22. Align the door bracket (1) to the center of the door (guide line) and the top section of the door and mark four mounting points.

23. Attach the door bracket (1) with four self-drilling screws 1/4" (2) using a 3/8" wrench.

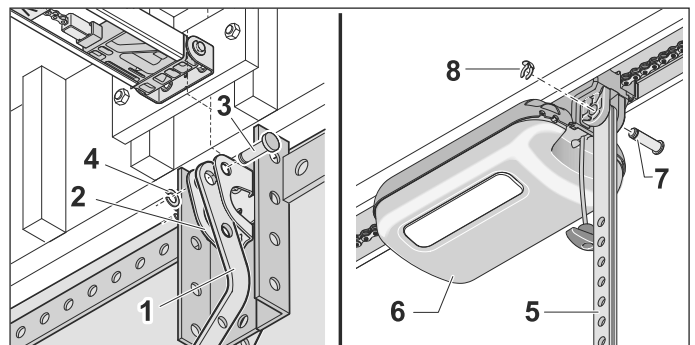


Fig. 24

Fig. 25