

Bluetooth Stereo Receiver



User Manual

Index

Warning	1-3
---------------	-----

Warning for FCC

This device complies with Part 15 of the FCC Rules. Operation is subject to the following two conditions:

- (1) This device may not cause harmful interference.
- (2) This device must accept any interference received, including interference that may cause undesired operation.

Any changes or modifications (including the antennas) made to this device that are not expressly approved by the manufacturer may void the user's authority to operate the equipment.

FCC RF Radiation Exposure Statement: This equipment complies with FCC RF radiation exposure limits set forth for an uncontrolled environment. This device and its antenna must not be co-located or operating in conjunction with any other antenna or transmitter.

This equipment has been tested and found to comply with the limits for a class B digital device, pursuant to part 15 of the FCC Rules. These limits are designed to provide reasonable protection against harmful interference in a residential installation.

This equipment generates, uses and can radiate radio frequency energy and, if not installed and used in accordance with the instructions, may cause harmful interference to radio communications. However, there is no guarantee that interference will not occur in a particular installation. If this equipment does cause harmful interference to radio or television reception, which can be determined by turning the equipment off and on, the user is encouraged to try to correct the interference by one or more of the following measures:

- Reorient or relocate the receiving antenna.
- Increase the separation between the equipment and receiver.
- Connect the equipment into an outlet on a circuit different from that to which the receiver is connected.
- Consult the dealer or an experienced radio/TV technician for help.

Chapter one

1.1	Product Introduction	4
1.2	Function Key Introduction	5

Chapter two

Operation Introduction

2.1 AV service

2.1.1	Turn-On	6
2.1.2	Searching Available Bluetooth Device	6
2.1.3	Paring	7
2.1.4	Connecting	8
2.1.5	Play Music	9
2.1.5.1	Music Play/Pause/Stop	9
2.1.5.2	Volume Control	9
2.1.5.3	Song Switch	9

2.2 Mobile phone Hands-Free

2.2.1	Paring with Mobile Phone	10
2.2.2	Answer coming call	10
2.2.3	Hang up	10
2.2.4	Switching between Mobile and Music Player	10
2.2.5	Last Call Redial	10

Chapter Three

Important message and Trouble Shooting	11
--	----

Chapter Four

Specification	12-13
---------------------	-------



Warning



Please do not store the product in high temperature or humidity place for long time.

Important Operation Safety Notice

1. Please read the user manual before operate the BT-B01
2. Please keep the user manual for your reference anytime.
3. Please follow all the instruction in the usual manual
4. Please clean the BT-B01 with clothes rather than other Chemical liquid Cleaner by spray or any means.
5. Do not use any accessory not included in the package avoid any damage on the goods.
6. All the operation set-up should follow the user manual, and use the accessories included in the standard package.
7. Any problem happened on the Power adaptor, please consult to the Dealer or distributor. Do not open the power adaptor by yourself.,
8. Please plug off the power adaptor for the power socket in the flashing light ening day or not in use for long time period to protect the goods.
9. Do not open the product by yourself under and situation or drop any liquid into the product to avoid short circuit.
10. Do not plug in the BT-B01 on the power socket under electronics overloaded circumstance.

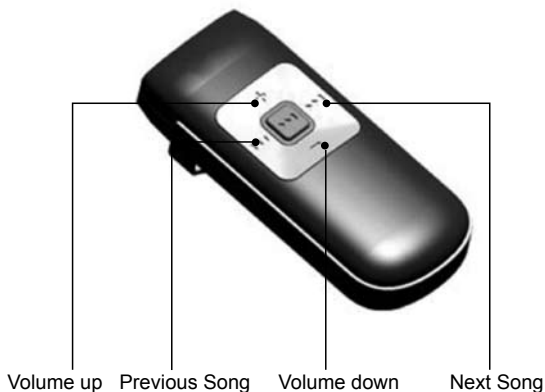


1. Product and Function Key Introduction

1.1 Product Introduction

Using state-of-the-art Bluetooth technology, it lets you have the convenience to enjoy the music from computer or other source, meanwhile, you can answer your phone call without miss.

1.2 Function Key Introduction





1. Product and Function Key Introduction



mini USB Connector (for Charging)

Earphone



Paly/Pause



Hook



Hole for hanging strap





2. Operation Instruction

2.1 AV service

1. Please plug in the Dongle to the USB port
2. Use BT-B01 pairing with your Bluetooth enable mobile phone first if you would like to have the hand-free function.
3. After pairing with your Bluetooth enable mobile phone, switch off your BT-B01 then turn it on again to operate the below AV mode process.
4. After pairing using the AV mode, please connect your BT-B01 with your mobile phone again. Then, you can enjoy your music from your Bluetooth enable device without missing any call.

2.1.1 Turn on the Power

Press Play/Pause Key till the LED light flashing Blue and Red, entering Pairing mode.

2.1.2 Searching Bluetooth enable device

In the IVT operation software, select the “View” then click the “Update”, the IVT will show BT-B01 on the screen. If not, repeat the process above.



(1)



2. Operation Instruction

2.1.3 Pairing

1. When BT-B01 flashing with Blue/Red LED, click on the “Pairing” as Photo(2)



(2)

2. Enter Pin Code “0000” in the blank, and press “Enter”



(3)

3. When you have paired successfully, the blue LED will flash slowly. And the BT-B01 icon will show as photo (4). Attention : If you are not pairing under the BT-B01 pairing status(Blue/Red Flashing),even you get the same result as above, you did not get the pairing successfully. Please switch of the Power of BT-B01 and re-do the pairing process.



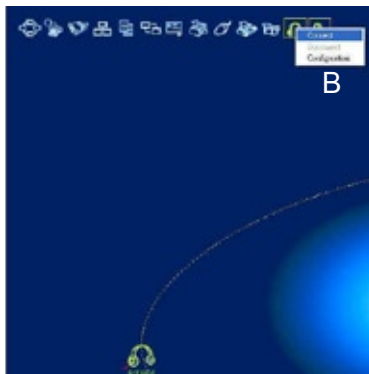
(4)



2. Operation Instruction

2.1.4 Connecting

1. Click twice on the icon BT-B01 in the Photo(5)
2. Click right button of your mouse on the Speaker Icon of photo (5) executing the “Connecting” Selection.



(5)

3. If you are connecting successfully, the screen will show as photo (6)



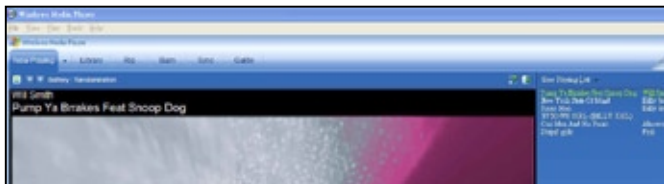
(6)



2. Operation Instruction

2.1.5 Play Music

Under the Connecting Status, you are able to execute the Window Media Player mode and play the music through the BT-B01. You can have Volume Control , Forward / Backward and Pause/Stop/Play remote control function from your BT-B01 to the Window Media Player.



2.1.5.1 Music Play/Pause/Stop

1. Press Play/Pause Key to get the music paused.
2. If you want to re-play the music, just press the Play/Pause key again.
3. Press the Play/Pause Key three seconds, you can get the music stop.

2.1.5.2 Volume Control

1. Press the Volume Up to increase the volume.
2. Press the Volume Down to decrease the volume..

2.1.5.3 Select Song

1. Press the "Forward" button for next song.
2. Press the " Backward" button for previous song.



2. Operation Instruction

2.2 Mobile phone Hands-Free

2.2.1 Pairing with your Bluetooth enable mobile phone

Please set up the connection between your Bluetooth enable mobile phone with BT-B01. Then the BT-B01 will recognize your Bluetooth enable mobile phone quickly when you want to use it.

1. Switch on the power of BT-B01 to let it enter the flashing Blue/Red LED paring status.
2. Please refer to the user manual for paring with your Bluetooth enable mobile phone. Please make sure the distance between your Bluetooth enable mobile and BT-B01 is within 2 M.
3. After your Bluetooth enable mobile phone show BT-B01, please enter the Pin Code "0000"
4. In the connecting status, the Blue LED will flash slowly.

2.2.2 Answer the Call

1. When the call is coming, the BT-B01 will have reminder sound.
2. Press lightly the Play/Pause Key to answer the phone.

2.2.3 Hang Up

Press Play/Pause key to hang up the line.

2.2.4 Switch between the Bluetooth enable mobile phone and your Bluetooth enable music player.

1. When you play the music through the BT-B01, the coming call will have reminder sound. Press lightly the Play/Pause key to answer your call.
2. Within 10 seconds after your end of the phone call, the BT-B01 will connect your Bluetooth enable music player automatically.

2.2.5 Last Call re-dial

Press the "Backward" key over 5 seconds, the BT-B01 will re-dial your last call number.



3. Important message and Trouble Shooting

1. Power Low

When the music play is not smooth or the LED turns red, the BT-B01 is in the Power Low Status, please charge your battery immediately.

2. How to Charge

- A. Plug in the USB cable to the BT-B01
- B. Plug in the same USB cable above to the Computer.
- C. It takes about 3.5 hours to get the battery charged.

3. Fail to connect with your mobile phone

- A. Make sure you have switched on your power of mobile phone.
- B. Make sure the Bluetooth function of your Mobile Phone is on.
- C. Make sure your Bluetooth enable mobile phone is within 10 meter from the BT-B01

4. How to Maintain

- A. Keep the BT-B01 dry, and in dry circumstance.
- B. Keep the BT-B01 in clean and no dusty circumstance.
- C. Do not store the BT-B01 in high temperature place, it will shorten the battery life, electric device using time and deform the plastic parts.
- D. Do not store the BT-B01 in low temperature place, when the temperature comes up, the steam will cause short-circuit of the PCB.
- E. Do not open the BT-B01 or you might damage it by poor skill.
- F. Do not drop the BT-B01 or Strike on the BT-B01, it might damage the PCB circuits inside.
- G. Do not use any chemical liquid to clean the BT-B01.
- H. Do not paint on the BT-B01, it might obstruct the products and makes it mal-function.

5.New Battery : Please charge over 7 hours for the first time charging.

6.For Battery :

- A.Do not use un-authorized batteries.
- B.Use the BT-B01 as user manual, it can let your have longer battery life.
- C.Under different temperature, battery has different charging performance.
- D.Do not use battery in other purpose.



4. Specification

4.1 General Specification

Bluetooth Specification	Version 1.2
Frequency	2.4GHz ISM Band
Transmission Rate	723 kbps
Receive Sensitivity	-81 dBm
Maximum Output Power	+4 dBm (Class 2)
Operating Voltage	5V
Operating Temperature	-20~+75 °C
Storage Temperature	-40~+85 °C
Antenna Impedance	50 ohm
Package Size	71mm(L)x31mm(W)x18(H)mm
Operating Range	10 meters
Standby Current	10mA
Operating Current	24mA

4.2 Battery Specificatoin

Battery Type	Li-Polymer
Safety	Excellent
Possibility of Leakage	No
Design Flexibility	High
Nominal Voltage(V)	3.7
Gravimetric Energy Density(Wh/kg)	Highest(160-210)
Memory Effect	No
Self Discharge(%/month)	<5
Life Cycle	>500
Environmental Friendliness	Yes (No leakage, No Heavy Metals)



4. Specification

Battery Model : AE5024386H

Volume		Average Voltage	Dimension			Thickness
Typical	Min	V	Weight	Length	Width	Gram
(mAh)	(mAh)		(±1)	(±0.5)	(±0.3)	8.50
420	400	3.7	38	24	5	

Operating Temperature

Discharge: -20°C + 60°C

Charging: -0°C + 45°C

Storage: -20°C + 45°C (for less than 1 month)

-20°C + 35°C (for less than 6 month)

This device complies with Part 15 of the FCC Rules. Operation is subject to the following two conditions:

- (1) This device may not cause harmful interference.
- (2) This device must accept any interference received, including interference that may cause undesired operation.

15.105 Federal Communications Commission (FCC) Requirements, Part 15

This equipment has been tested and found to comply with the limits for a class B digital device, pursuant to part 15 of the FCC Rules. These limits are designed to provide reasonable protection against harmful interference in a residential installation.

This equipment generates, uses and can radiate radio frequency energy and, if not installed and used in accordance with the instructions, may cause harmful interference to radio communications. However, there is no guarantee that interference will not occur in a particular installation. If this equipment does cause harmful interference to radio or television reception, which can be determined by turning the equipment off and on, the user is encouraged to try to correct the interference by one or more of the following measures:

- Reorient or relocate the receiving antenna.**
- Increase the separation between the equipment and receiver.**
- Connect the equipment into an outlet on a circuit different from that to which the receiver is connected.**
- Consult the dealer or an experienced radio/TV technician for help.**

Any changes or modifications (including the antennas) made to this device that are not expressly approved by the manufacturer may void the user's authority to operate the equipment.

FCC RF Radiation Exposure Statement: This equipment complies with FCC RF radiation exposure limits set forth for an uncontrolled environment. This device and its antenna must not be co-located or operating in conjunction with any other antenna or transmitter.