

Operation Guide

TURNING THE UNIT ON & OFF (CONTINUED)

Automatic Shut-Off

If the Unit remains inactive for more than 3 minutes, it will turn off automatically in order to save battery. The unit will also save the exact status of your application program and data before shutting down. Simply restart the unit when ready to resume work.

Note: When turned off with fully charged batteries, the unit can be stored up to several days without re-charging. Refer to 'Storage and Maintenance' Section for further instructions.

TOUCH SCREEN

Touch Screen Calibration

The Touch Screen may need to be calibrated upon receiving a new unit or after being stored for a long period of time.

1. Hold your Stylus down until the Cross begins to move.
2. Touch the center of the Cross for a few seconds. Repeat operation as Cross moves to another location.

Note:

Calibration may also be started by following the steps below:

Click on:

- a) Start
- b) Settings
- c) Control Panel

3. Select Stylus applet
4. Select Calibration tab and click on Recalibrate.

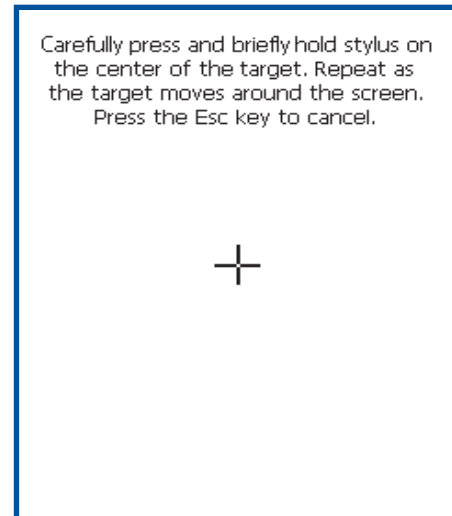
Using the Touch Screen

1. To use the touch screen, simply use the Stylus provided with the Unit.



WARNING

Apply normal pressure when using the Touch Screen. Excessive pressure may permanently damage the screen and hinder performance.

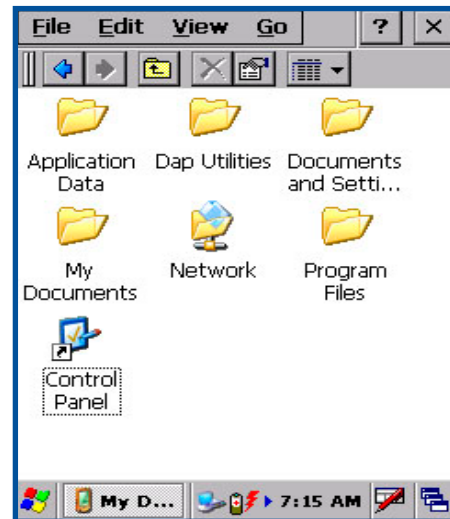


Operation Guide

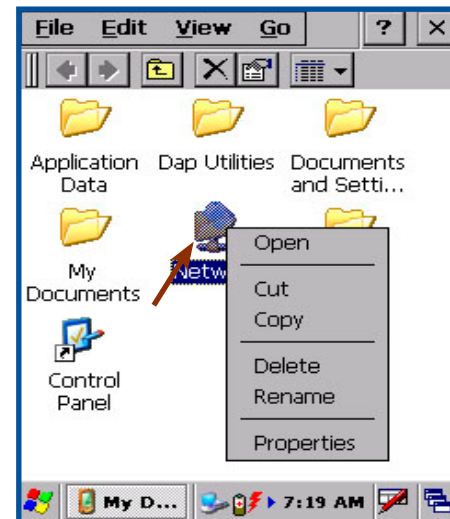
TOUCH SCREEN (CONTINUED)

Using the Touch Screen (Continued)

1. By using the Stylus provided, move files or folders by “dragging and dropping” into the folder of your choice.
2. To open a folder, double click with Stylus on the desired folder.
3. To run a program, double click with Stylus on the desired program.



4. Point to a folder (pressing Stylus on Touch Screen) and wait a few seconds, a contextual menu will appear.



5. To navigate, with Stylus scroll up or down the navigation bar.



[Return To Table of Contents](#)

Operation Guide

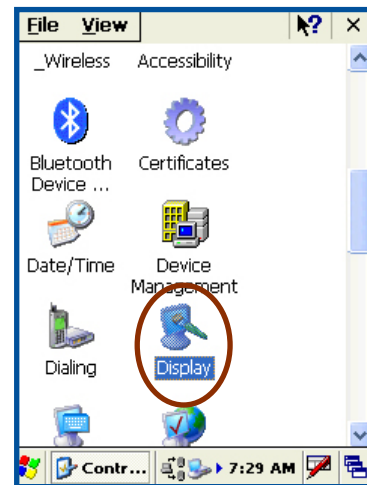
Activating the Screen Backlight

Every unit has been designed to work in low-light environments and have been equipped with a “Backlight” that can be activated at any time.

1. To adjust the backlight, Click on:

- a) Start
- b) Settings
- c) Control Panel

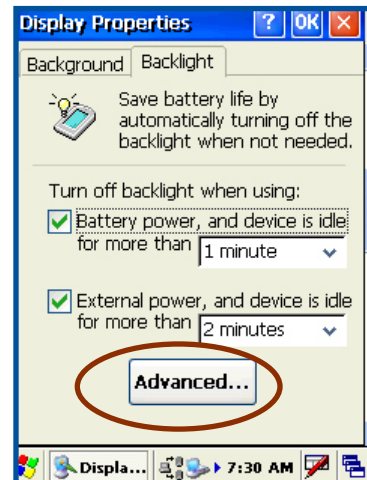
2. Select the “**Display**” applet.



3. Select “**Backlight**” tab.

Adjust time backlight is to turn off.

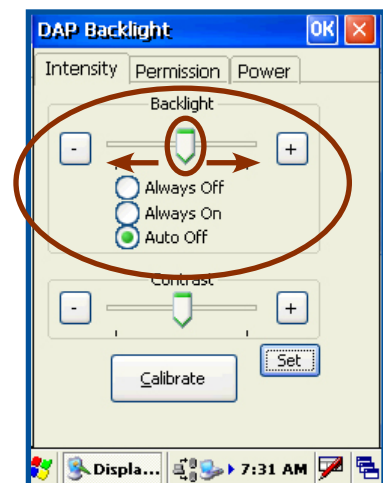
4. Select the “**Advanced**” tab for more options



5. Check options:

- a) **Always Off:** Will remain off at all times.
- b) **Always On:** Will remain on at all times.
- c) **Auto Off:** Will automatically adjust to surrounding light, turning on and off when required.

6. To adjust backlight manually, slide arrow to the left or to the right.






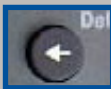







Operation Guide

USING THE KEYBOARD

Special functions

To obtain special functions, press the F key (Function Key) followed by another key. Refer to the table below for specific functions available with your CE3000B unit.

Note: when the F1 Key is pressed, an “F” icon will appear on the task bar and disappear once the second key has been pressed.

Special Function	Instruction
Keyboard Backlight ON/OFF	Press the F key followed by the TAB key  + 
Delete Key (DEL)	Press the F Key followed by the “Backspace” key  + 
Alternate Key (ALT)	Press the F key followed by the “SP” key  + 
Control Key (CTRL)	Press the F key followed by the “Period” key  + 
F1 to F9	Press the F key followed by a number from 0 to 9  + 
Navigation arrows	Press cursor pad in desired direction (Left, right, up or down) 

[Return To Table of Contents](#)

Operation Guide

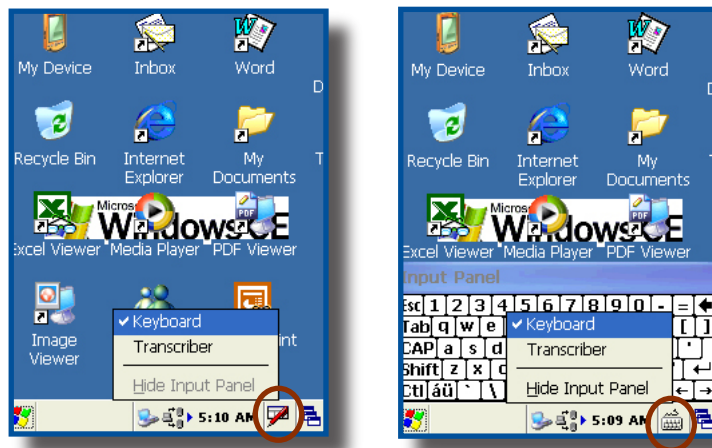
USING THE KEYBOARD (CONTINUED)

Alpha Mode

Special Function	Instruction
Engage / disengage Alpha Mode	Press the F key followed by the escape key. The ABC icon will appear / disappear on the task bar.
Enter an Alpha Character	Press the corresponding key. Depending on the letter, you may need to press once, twice or three times in order to obtain the desired letter. e.g: press once for “ a “ press twice for “ b “ press three times for a “ c ”
Engage / Disengage Uppercase Mode	Press the F key followed by the the 0 key +

Virtual Keyboard

The virtual keyboard has been included to assist in the entry of data. By clicking the Keyboard icon at the bottom right of the Task Bar, the virtual keyboard will be displayed on the screen.



- Select “Hide Input Panel” to hide the Virtual Keyboard.

[Return To Table of Contents](#)


Operation Guide

USING THE KEYBOARD (CONTINUED)

Virtual Keyboard (Continued)

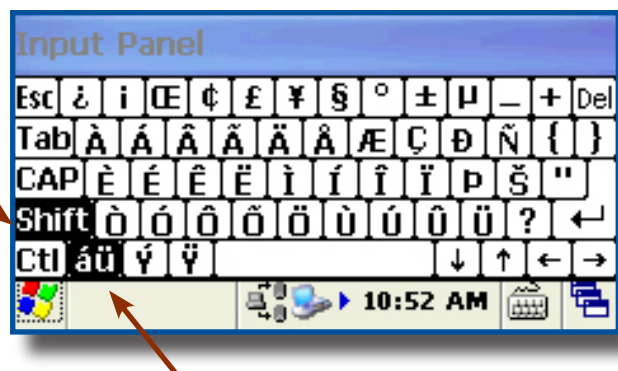
1. Standard Keyboard



2. Press  to toggle between the standard and extended language Keyboard.



3. Press the **Shift** Key on the virtual Keyboard to access additional characters.



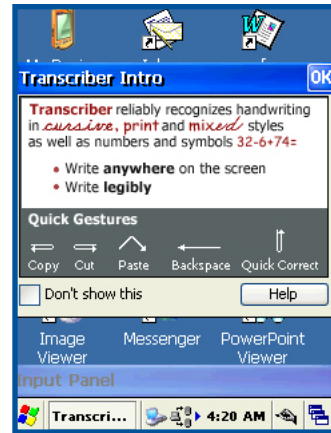
[Return To Table of Contents](#)

Operation Guide

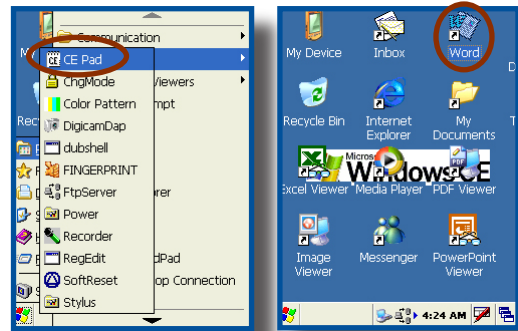
USING THE KEYBOARD (CONTINUED)

Transcriber

Transcriber is an award winning application that is used for handwriting recognition. Whether the handwriting is cursive or printed, or a combination of both, Transcriber is able to recognize both. In addition to recognizing letter, numbers and words, Transcriber can also recognize special characters and most common symbols and even various control gestures.



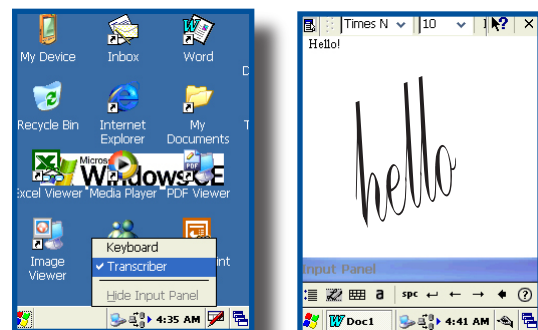
1. Start an application such as Pocket Word or CE Pad.
2. Double click on the **Word** Icon on your Desktop or go to:
 - a) My Device
 - b) DAP Utilities
 - c) **CE Pad**



3. Click on the **input method menu icon** in the lower right corner of the window (depending on what you already had selected on your CE3000B unit, one of these two icons will be visible).



4. Select **Transcriber** from the menu.
5. Activate or deactivate Transcriber by clicking on Transcriber in the menu.
6. Position the cursor where you want text to appear.
7. Using the Stylus, write directly onto the screen. Once text is written, Transcriber will wait a few moments for the **Recognition Delay**, then displays the text in the selected location.



[Return To Table of Contents](#)

Operation Guide

USING THE KEYBOARD (CONTINUED)

Transcriber (Continued)

Note: To know more about Transcriber as well as possible options, click on the Help Icon located on the Input Panel Display.



Activating the Keyboard Backlight

1. Press the “F” key followed by the “Tab” key, pressing one after the other.



Note: Keyboard backlight drains the batteries more quickly, it is recommended that backlight be used only when necessary.

Operation Guide

PC & SDIO CARD DESCRIPTION

PC Cards

PC cards are available in 3 basic formats: Type I, Type II & Type III. The type refers to the thickness of the card; type III being the thickest. The width is the same for all cards, however the length will depend on the particular function of the card. (Memory cards are the shortest while wireless and GPS cards are much longer).

Note: The standard length of a PC card is 85.7 mm ($\approx 3 \frac{1}{8}$ in). The maximum length a CE3000B unit can accommodate is 120 mm ($\approx 4 \frac{1}{2}$ in). The extended length is usually used for GPS, RF Tag Readers and wireless cards.

Note: CF cards (Compact Flash Cards) are between the SDIO and PC Cards in terms of size and can generally be installed in the CE3000B unit as a PC card, **however, it requires the use of an Adapter.**

SDIO Cards

These cards are available in a smaller format. Length will depend on the complexity of the card, e.g., a memory card is much shorter than a wireless card.

SDIO Cards will come in 3 different lengths:

- Short: 32 mm (standard cards such as memory cards)
- Medium: 40 mm (such as Bluetooth cards)
- Long: 54 mm (such as WIFI AND WLAN Cards)

Note: The CE3000B unit does not accept CardBus 32 bit PC Cards or extended PCM CIA Cards (which all use the same technology). To ensure your unit may accept certain cards not described within this user guide, it is recommended you refer to our Technical Support Web Site for the most current information, or contact your Technical Support Representative nearest you.

USING PC & SDIO CARDS

One PC Card slot and one SDIO card slot are located at the top of the Endcap or the Adaptable Endcap. Follow the instructions to insert, remove or to replace a card.

WARNING

- To ensure no dirt particles or water enters the unit when inserting, removing or replacing PC or SDIO cards, it is important to do so in a clean and dry area.
- Some Adaptable Endcaps may make the installation of these cards more complex. You may require the assistance of a skilled technician or assistance from customer technical support.
- PC & SDIO Cards can reduce battery life significantly, especially the WLAN and Bluetooth cards.
- Most PC & SDIO cards that are not memory cards, will require the installation of a driver for proper functioning. Refer to your technical support team or Roper Mobile Technical Support Team for further information.

Operation Guide

USING PC & SDIO CARDS (CONTINUED)

Inserting PC or SDIO Cards

1. Turn the unit off.
2. Using a Flathead screwdriver, loosen the 2 screws located at the top of your unit on Endcap.
3. Remove the Endcap slowly and place to the side.

Note: The screws will remain inside the Endcap.

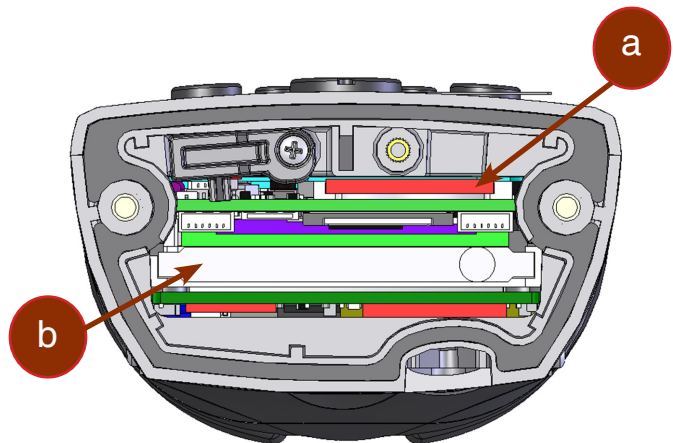
WARNING

- The Adaptable Endcap with GPS option has a short communication cable between Endcap and unit. Keep Endcap close to unit not to break or disconnect the cable.

Note: You do not need to disconnect the GPS cable to insert the PC or SDIO cards.

4. Slide card into the appropriate socket. (PC or SDIO).

- a) SDIO Slot
- b) PC Slot

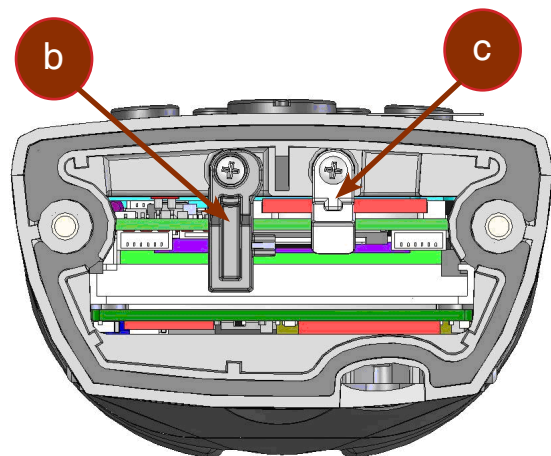


5. Turn stopper to secure cards into place.

- c) SDIO Stopper
- d) PC Stopper

Note: The extended Endcap also comes with two (2) foams to secure PC or SDIO cards into place when stoppers cannot be used.

6. Replace the door to its original position and tighten screws.



[Return To Table of Contents](#)

Operation Guide

USING PC & SDIO CARDS (CONTINUED)

WARNING

1. Installing PC cards is **not** recommended when Adaptable Endcap is installed.
2. Insert PC or SDIO Cards in a clean and dry environment to ensure no dust particles or water enters the unit.
3. Ensure to insert PC or SDIO Cards appropriately or you may damage the unit.
 - a) **PC Cards:** Insert the end with the two (2) rows of little holes first and manufacturer label facing upwards.
 - b) **SDIO Cards:** Insert the end with the row of copper fingers first and manufacturer label facing upwards.

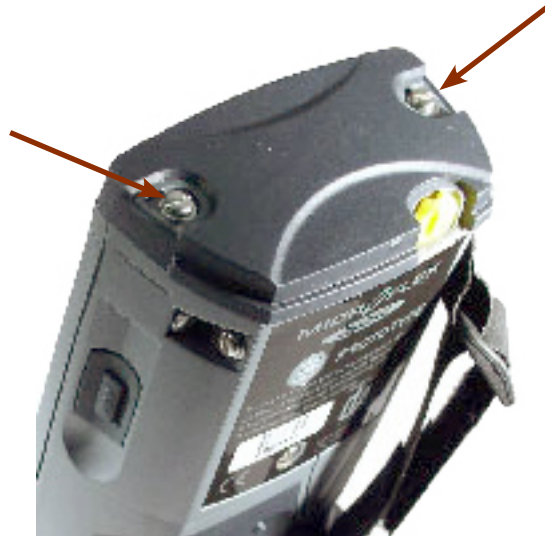


Removing PC or SDIO Cards

1. Turn the unit off.
2. Using a Flathead screwdriver, loosen the 2 screws located at the top of your unit on Endcap.
3. Remove the Endcap slowly and place to the side.

Note: The screws will remain inside the Endcap.

- a) To remove the **PC Card** from the unit, press the '**release button**' located to the right of the PC Card opening.
 - b) To remove the **SDIO Card**, push gently once and card will pop up. Remove card.
4. Replace the door to its original position and tighten screws.



Operation Guide

USING THE CRADLE

Note: For instructions regarding the installation and configuration of the cradles available for your CE3000B unit, refer to the Technical Guide available on the Roper Mobile Technical Support web site. Refer to 'Advanced User Information' for instructions on logging onto the Customer Service Web Site.

The Technical Guide will provide information on the following Cradles:

Office Cradle	
Cradle Code	Description
CBCE340BE	Charge & Communication: USB Host; USB Client and Ethernet
Vehicle Cradles	
Cradle Code	Description
CBCE340BV	Charge and Communication: USB Host; USB Client and 3 Serial Ports (RS232)

Using the Ethernet Cradle

1. To activate the Ethernet Cradle, you must first connect a CSCE300 charger to the cradle.
2. Connect the RJ-45 network cable to the cradle.



3. Slide the unit into the cradle.
4. Connect power cable to the wall outlet.



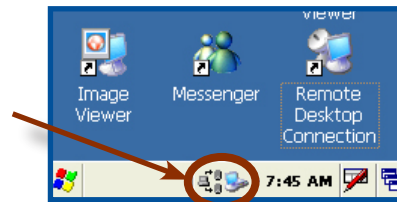
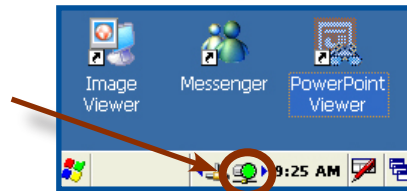
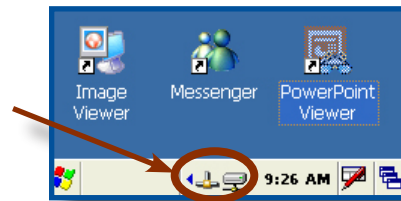
[Return To Table of Contents](#)

Operation Guide

USING THE CRADLE (CONTINUED)

Using the Ethernet Cradle (Continued)

1. Ethernet Adapter is activated and linked to the Network. It is ready to be used by a User or Windows Application.
2. This blinking icon indicates that a connection is established with the network and data is being transferred.
3. The following icons indicate that the FTP Server is running. By default, server starts automatically when a network connection is established.



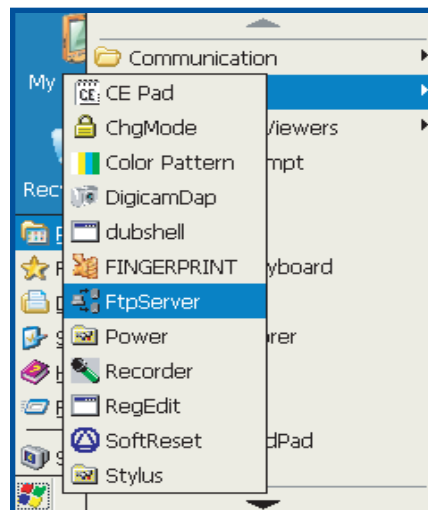
TRANSFERRING FILES IN FTP MODE

The CE3000B unit includes an FTP Client access which makes transferring files easy and does not require the use of ActivSync.

1. Insert the CE3000B unit into the Office Cradle.
Note: Once unit is inserted this will automatically activate the FTP server. If the FTP server does not activate automatically, follow the steps below.

Click on:

- a) Start
- b) Program
- c) DAP Utilities
- d) FTP Server



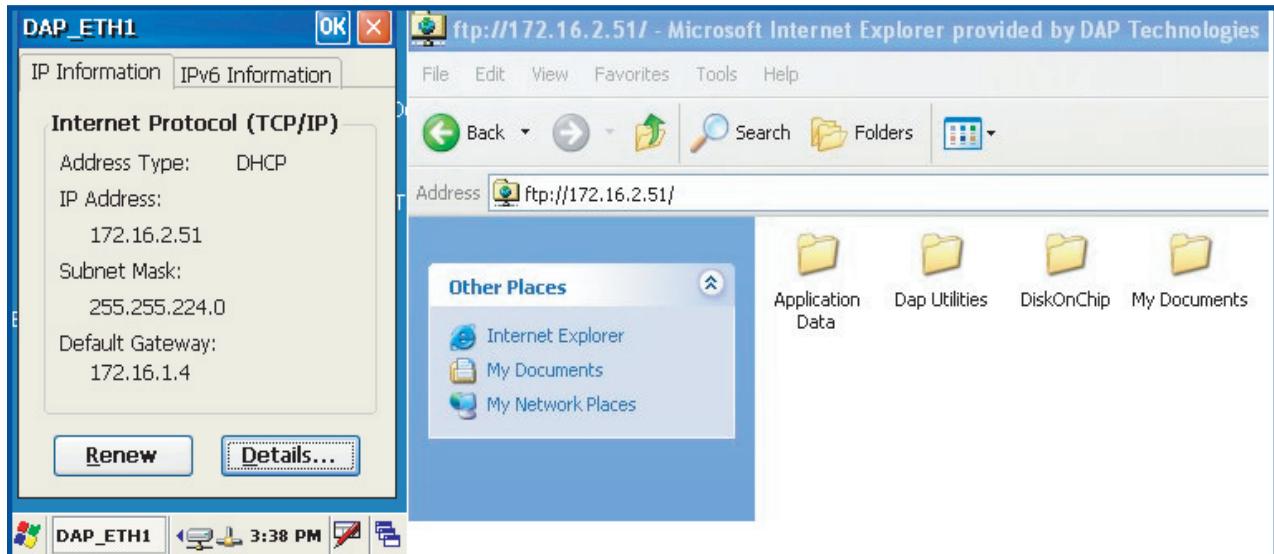
Operation Guide

Transferring Files in FTP Mode (Continued)

3. Open Internet Explorer on your Desktop Computer then type:

FTP:// <your CE3000B IP address>

e.g.: FTP://192.168.2.34



4. The contents of your CE3000B unit will appear. Simply use the conventional '**Drag and Drop / Copy / Delete**' functions to manage its contents.

USB CLIENT CONNECTION

1. To activate the USB Connection, you must first connect a CSCE300 Charger to the cradle.
2. Connect USB cable to the CE3000B Unit and to the Host connector on your desktop computer.



3. Slide unit into the cradle.
4. Connect power cable to wall outlet.



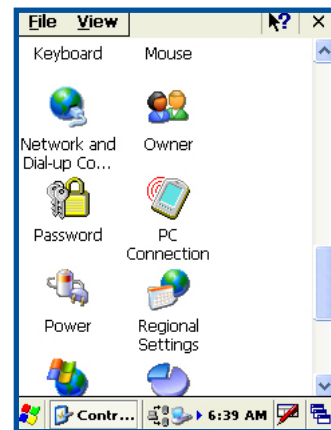
[Return To Table of Contents](#)

Operation Guide

USB CLIENT CONNECTION (CONTINUED)

1. To configure USB Connection , Click:

- a) Start
- b) Settings
- c) Control Panel
- d) PC Connection



2. Select **“Enable direct connections to the desktop computer”**.

3. Click “OK”



4. To activate ActiveSync, Click:

- a) Start
- b) Programs
- c) Communication
- d) PC Link

Note: Shortcut to PC Link: Press the Function Key followed by the 1.

