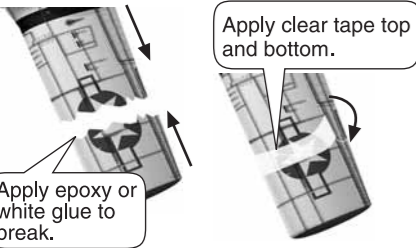


REPAIRING YOUR PLANE

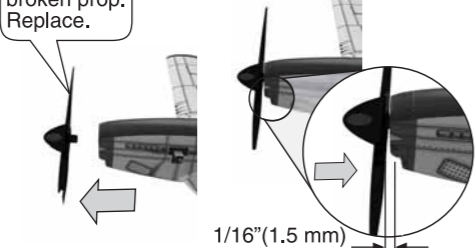
EASY REPAIRS YOU CAN DO YOURSELF

Your plane is easy to repair. If damaged, repair any foam part that breaks with white glue or 5-minute epoxy and/or clear packing tape (sold separately at hardware or hobby stores). Other types of glue may damage the plane. Review illustrations below.

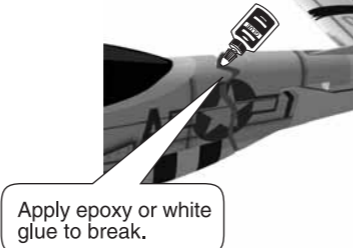
FIX WING



FIX PROPELLER



FIX FUSELAGE



TRIMMING YOUR PLANE

If your plane makes uncontrolled left or right turns (will not fly straight) you must “trim” the plane’s surface.

TRIMMING DIRECTIONS

1. Determine wing to be trimmed *See image below!*
2. Grip outer rear wing edge lightly (near wing tip) and bend slightly DOWNWARDS. *See image below!* ONLY bend until you feel foam begin to deform. Be careful, it's easy to break the foam! Let go and you should see a wrinkle in the foam.
3. Test fly your airplane. If your plane is still making uncontrolled turns, repeat above steps moving a thumb length inward, toward fuselage.
4. If plane is now turning the other direction, you bent the wing too much! Try to reduce the bend and test fly until straight flight is achieved.

Left uncontrolled turns ----- Trim left rear edge down
Right uncontrolled turns ----- Trim right rear edge down

TROUBLESHOOTING

ELECTRIC MOTOR DOES NOT RUN OR LOW POWER

TX and/or plane switch not turned ON ----- Turn switch ON.
Plane not charged ----- Charge plane.
Batteries in charger need replacement ----- Replace batteries in charger.
Debris stuck behind propeller ----- Check and clean.

RUDDER/ELEVATOR DOES NOT MOVE WHEN CONTROL STICK MOVED

Plane not charged ----- Charge plane.
Batteries in charger need replacement ----- Replace batteries in charger.

SHORT FLIGHT TIME

Plane not fully charged ----- Charge plane.

ERRATIC, LITTLE, OR NO RADIO CONTROL

Other transmitters (CBs, RC cars or boats) ----- Move to a new location.
Batteries in charger need replacement ----- Replace batteries in charger.
Plane not charged ----- Charge plane.

90 DAY LIMITED WARRANTY

Do not return your plane to the store. Estes will repair or replace factory defects for 90 days from the date of purchase. This warranty specifically does not cover crash damage or abuse.

For fast courteous service, if you find a defect or a part is missing, please contact Estes Customer Service at (www.estesrockets.com) or call 1-800-525-7561.

Obtain a Return Merchandise Authorization (RMA) number from Estes Customer Service before returning a defective part or product. Any part or product returned to Estes without a RMA number clearly marked on the shipping label will not be accepted. Send only the defective part(s). There may be additional charges if you send more than is necessary. **Ship returns to: Estes-Cox Corp., 1295 H St, Penrose, CO 81240.**

This warranty applies only if the product is operated in compliance with instructions and warnings provided with each model. Estes-Cox assumes no liability except for the exclusive remedy of repair or replacement of parts as specified above. Estes shall not be liable for consequential or incidental damages. Some states do not allow the exclusion of incidental or consequential damages so the above exclusion may not apply to you. This warranty gives you specific legal rights and you may also have other rights, which vary from state to state.



If you've enjoyed flying the P-51 Mustang™, view our COX Hobby Products line at www.coxmodels.com for more advanced flying opportunities!

F4U Corsair® R/C Airplane RTF Set



Cox Item 006300

Corsair is a licensed Trademark of Northrop Grumman



www.estesrockets.com

ESTES-COX CORP.
1295 H Street, P.O. Box 227
Penrose, CO 81240-0227
PRINTED IN CHINA

WARNING:

Choking/Cutting Hazard—small parts, sharp propeller. Not for children under 8 yrs.

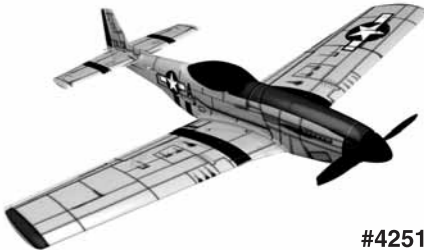


Produced under license from Boeing Management Company. P-51 Mustang™ & North American Aviation are among the trademarks owned by Boeing.

P-51 MUSTANG™

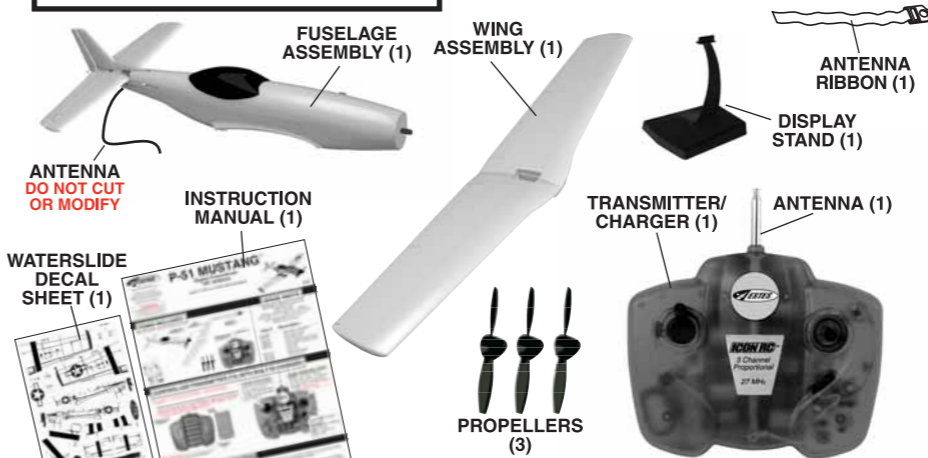
Digital Proportional
Radio Control Airplane

KEEP FOR FUTURE REFERENCE



#4251

ITEMS INCLUDED



SPARE PARTS

Call Estes Customer Service at 1-800-525-7561.
Monday - Friday, 8:00 am - 4:00 pm Mountain Time or order parts on-line at www.estesrockets.com, click on 'Replacement Parts.'

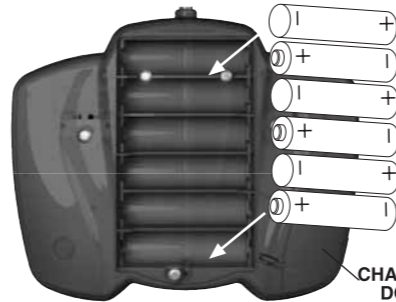
Item # Description

064801	Fuselage Assembly
056444	Wing Assembly
064802	Propellers (3)
064851	Water-Slide Decal Sheet
056475	Transmitter/Charger with Antenna
064149	Antenna
061315	Antenna Ribbon
056463	Display Stand

CONTROLLER/TRANSMITTER (TX) WITH BUILT-IN CHARGER

Requires 6 - AA Alkaline Batteries - Sold Separately

Remove screw and back cover. Insert 6 new AA alkaline batteries in the correct polarity into the TX. Replace back cover and screw. **Replace batteries when RED TX Power LED flashes (Approx. 7 charges). DO NOT ATTEMPT TO FLY.**



BACK COVER

CHARGING DOOR

COVER SCREW

Attach antenna ribbon to antenna

Throttle Control Stick
Push all the way forward to run motor at full throttle. Pull back to lower speeds, all the way back for throttle off.

Rudder and Elevator Control Stick
Push left or right to control the rudder, or forward or backwards to control the elevator. *See FLYING YOUR PLANE before flying.*

TX power LED (RED)

Charge LED (GREEN)

Switch ON for flying (Red LED); OFF for power off (LEDs off). CHARGE for charging (Green LED).

IMPORTANT USER INFORMATION

R/C USER INFORMATION

This radio system complies with Part 95 of the F.C.C. rules. Operation is subject to the following two conditions:

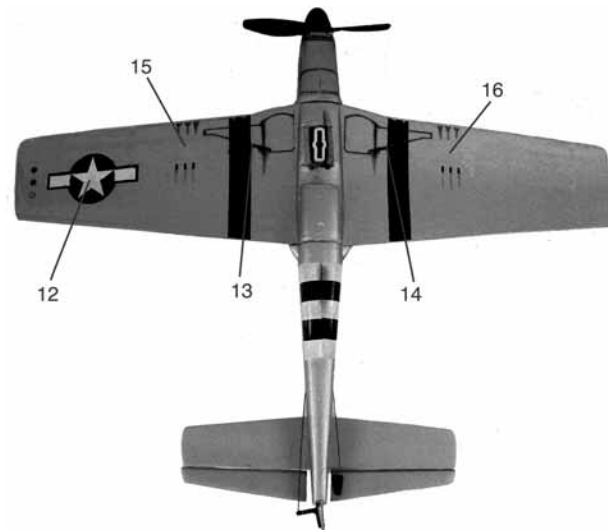
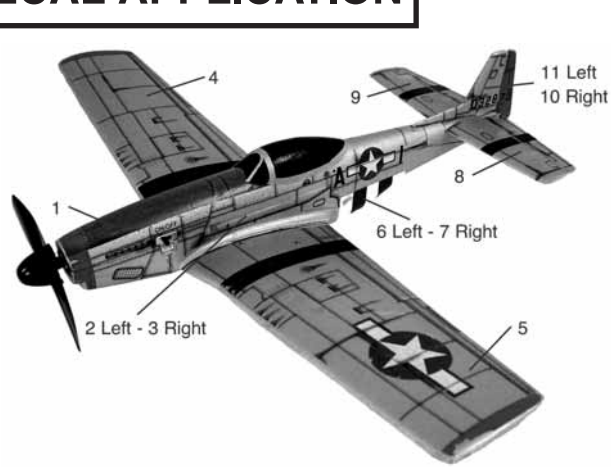
1. This radio system may not cause harmful interference.
 2. This radio system must accept any interference received, including interference that may cause undesired operation.
- Changes or modification of any kind to the transmitter not expressly approved by Estes-Cox Corp. will void the user's authority to operate the transmitter.

Transmitter frequency can only be changed and the associated electronic circuitry tuned by Estes-Cox Corp. Changing frequency by the consumer will void the warranty and is a violation of F.C.C. regulations.

Do not cut or shorten the length of the transmitter antenna or receiver antenna wire on the back of the plane. Doing so greatly reduces the operational range of the radio system.

Refer to label on back of transmitter for operating frequency. Do not fly or operate more than one R/C plane or vehicle on the same frequency at a time. Operational interference may occur.

DECAL APPLICATION

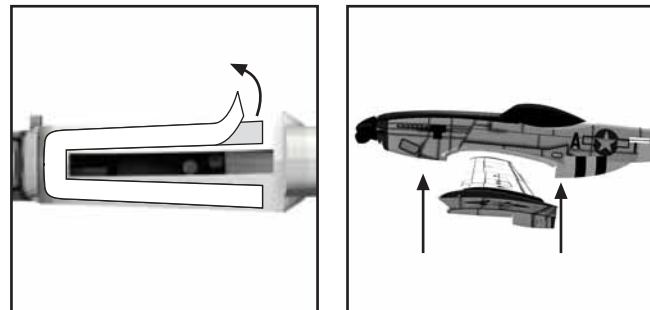


Please refer to the included water-slide decals and above images to determine the location of the decals.

1. Cut out desired decal to be applied; be sure to cut inside the dotted line.
2. Place the decal in a small bowl of warm water for 30 to 60 seconds, or until decal slides easily.
3. Lightly wet the surface where the decal is to be applied to, and carefully slide decal from the paper backing onto the airplane surface.
4. When satisfied with the placement, carefully pat the decal in place with a paper towel.
5. Allow the decals to dry thoroughly before attaching the wing.

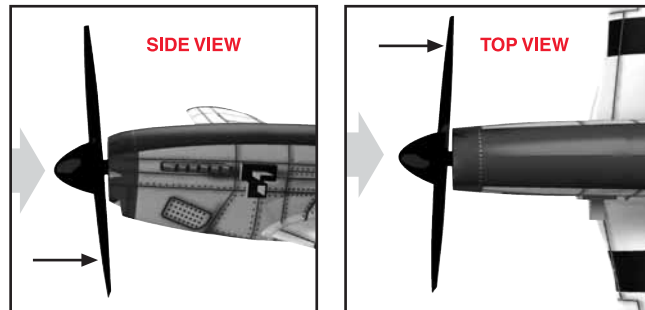
AIRPLANE ASSEMBLY

WING ASSEMBLY



1. Test fit the wing to the fuselage BEFORE removing protective paper.
2. Remove the protective paper, and carefully press wing into place.

PROPELLER ASSEMBLY



1. Carefully press the propeller onto the motor shaft.
2. When viewed from the side, the propeller should be angled down slightly.
3. When viewed from the top, the propeller should be angled toward the right.

! WARNING:

PROPELLER SAFETY:

TO AVOID INJURY AND PROPERTY DAMAGE:

- Keep your face, fingers, clothing and other objects away from the propeller at all times.
- Keep spectators behind and away from plane at all times.
- Before each flight, make certain propeller is securely attached to your plane.

BATTERY AND CHARGING SAFETY:

This plane contains 1 non-removable 105 mAh 3.7 Volt Lithium-Polymer (Li-Po) battery. **Li-Po batteries are easily damaged and may cause fire or explode.**

- Use only the Controller/Charger supplied to charge battery in plane.
- Do not reverse polarity while plugging into charger.
- Check plane continuously during charging.
- Do not leave plane unattended during charging.
- Never leave or store plane connected to controller/charger.
- If plane's internal battery becomes hot, smells, makes a sound, or leaks fluid, disconnect from charger. Do not use. If fluid gets on skin, rinse well with water.

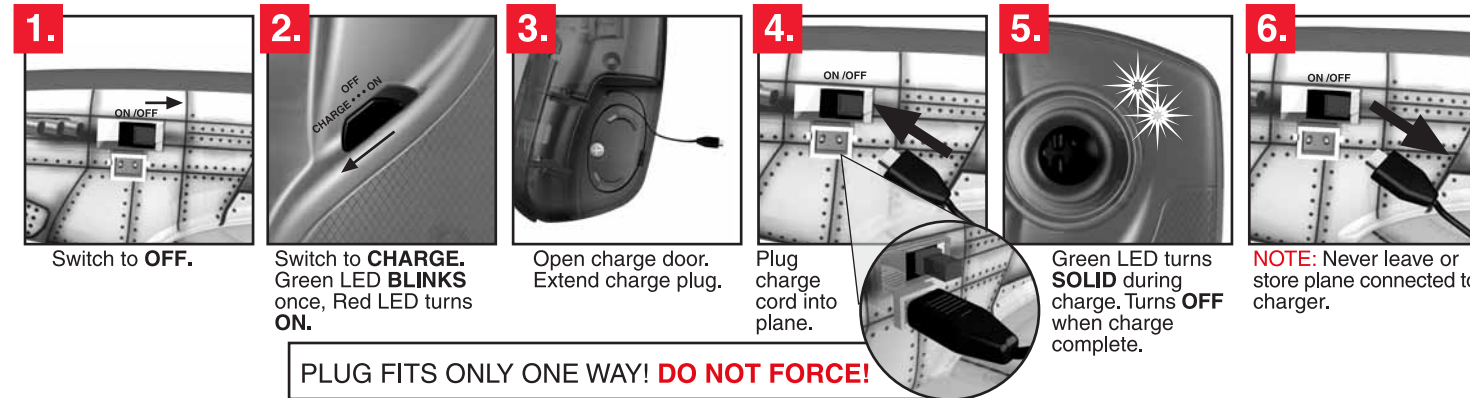
- After each flight, inspect the propeller for nicks and breaks.
- Discard and replace nicked, chipped, cracked or broken propeller.
- Use only the propeller supplied with the plane.
- Do not alter, modify, or customize the propeller.

- Do not incinerate plane or its battery.
- To dispose of plane and its battery, tape leads to prevent short-circuiting and take to your nearest recycling center or discard in outside fire-proof container.
- Charge, discharge (use) and store at temperatures above freezing and below 113° F (45° C).
- Do not store near flame or sources of heat such as inside a hot car.
- Should the plane's battery, battery leads, or wiring become damaged, deformed, or punctured, do not use the plane.
- Protect the plane from getting wet.
- Charge in a fire-proof location away from combustibles.
- Do not short-circuit.
- Keep away from small children.

CHARGING THE PLANE

Your plane contains 1 non-removable 105 mAh 3.7 Volt Lithium-Polymer (Li-Po) battery.

CHARGE TIME APPROX. 20 MINUTES



PLUG FITS ONLY ONE WAY! **DO NOT FORCE!**

FLYING YOUR PLANE

PRE-FLIGHT OPERATION CHECK

1. With a fully charged plane, switch controller to **ON** position and extend antenna.
2. Clear hands from propeller, switch plane to **ON** position.
3. Check controls by moving the rudder and elevator control stick. Verify movement of rudder and elevator.
4. Holding plane, check propeller by moving the throttle control stick from off to full throttle.

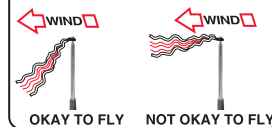
1. LAUNCHING

Hold the plane level with the ground. Push throttle control stick to full throttle. Throw straight out into the wind, like throwing a dart.

SAFETY PRECAUTIONS:

1. ALWAYS fly in soft grassy fields, like a soccer field. DO NOT fly in parking lots or streets.
2. NEVER fly near power lines, trees, houses, or buildings.
3. DO NOT fly in winds over 5 MPH (8 KPH).
4. ALWAYS keep hands, face, and clothing away from propellers.
5. ALWAYS have spectators stand behind the pilot during flight.

USING THE WIND INDICATOR



NOTE: Your plane has been equipped with a throttle arming safety feature. If your plane is turned on and the Throttle Control Stick is in any position except off, the propeller will not operate until the Throttle Control Stick is moved to the off position.

2. RUDDER AND ELEVATOR CONTROL

The right control stick on your controller controls both rudder and elevator.

Rudder: Move the control stick left or right to turn left or right.

Elevator: Pull the control stick back (toward you) to climb. Push the control stick forward (away from you) to descend.

Your plane has both rudder and elevator digital proportional control.

Digital Proportional Control: The more you move and the longer you hold the right control stick the faster and more intense your turn, climb, or descent will be.

IMPORTANT

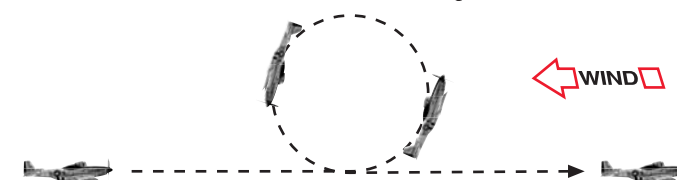
Once you start a turn, climb or descent, your plane will continue to turn, climb or descend until you give it the opposite command.

3. LANDING

To prepare to land, fly your plane into the wind. Lower throttle control stick to reduce speed. Move the rudder control stick left or right to keep wings level. If needed pull back on the elevator control stick to keep the nose up.

ADVANCED FLYING TECHNIQUE

INSIDE LOOP: Fly your airplane into the wind, keeping the wings level, and apply full power. Pull back fully on the elevator control stick. Continue to apply full back stick until the airplane rotates over the top. When the airplane reaches 3/4 of the loop, ease off the elevator control stick and return to level flight.



CONTROLLING THE PLANE FLYING AT YOU

REMEMBER – YOU ARE IN THE COCKPIT!

To level wings and fly straight, steer the plane in the direction of the low wing.

STEER RIGHT

