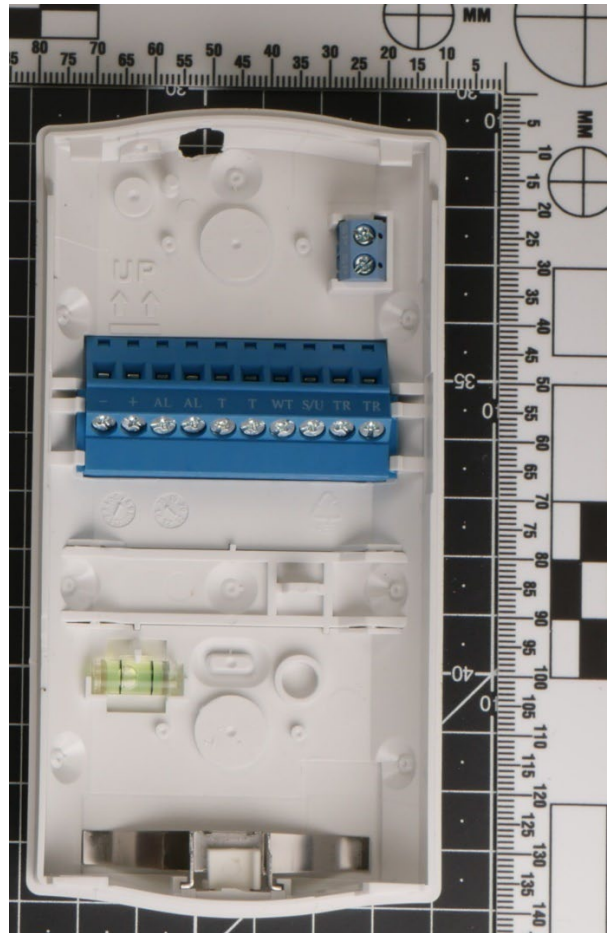
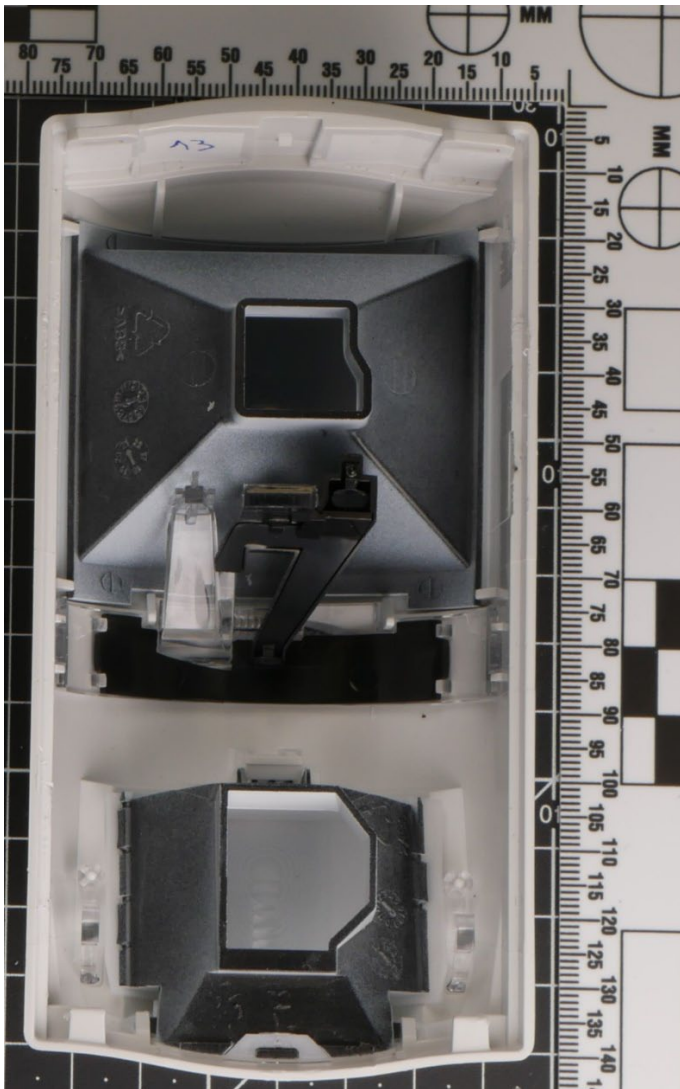


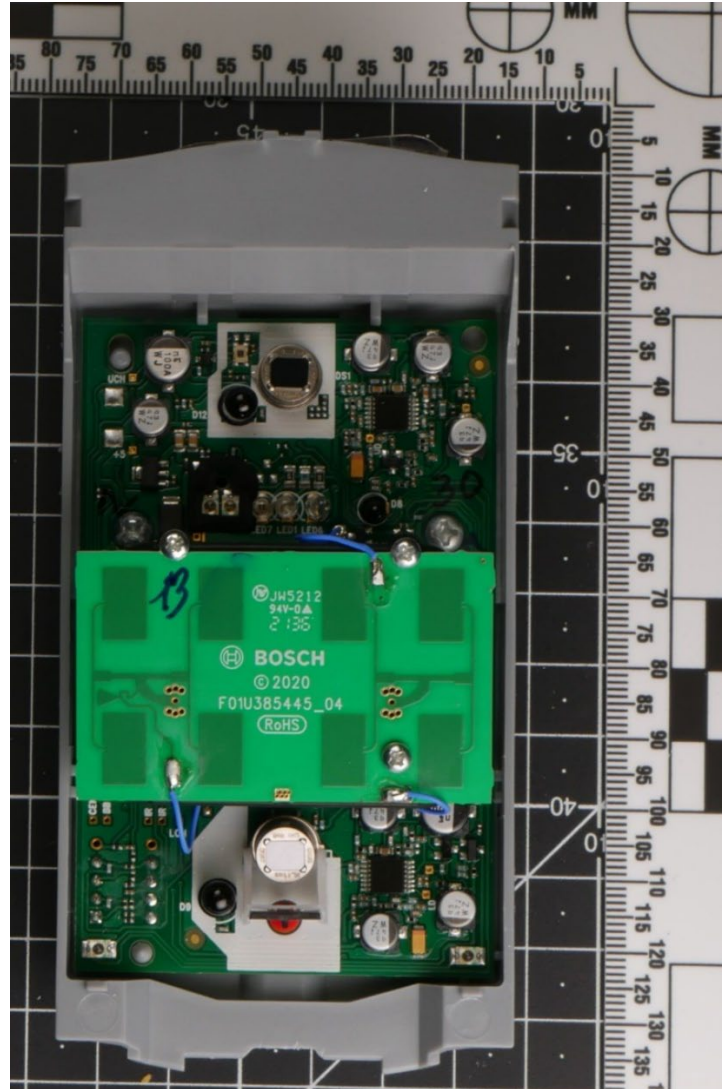
INSIDE FRONT w/Back Cover Removed



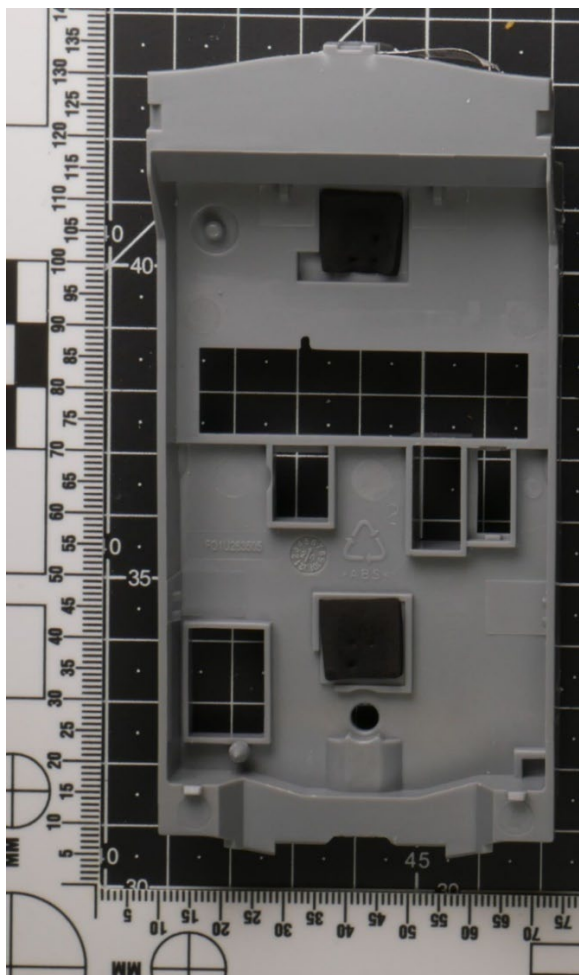
INSIDE BACK COVER



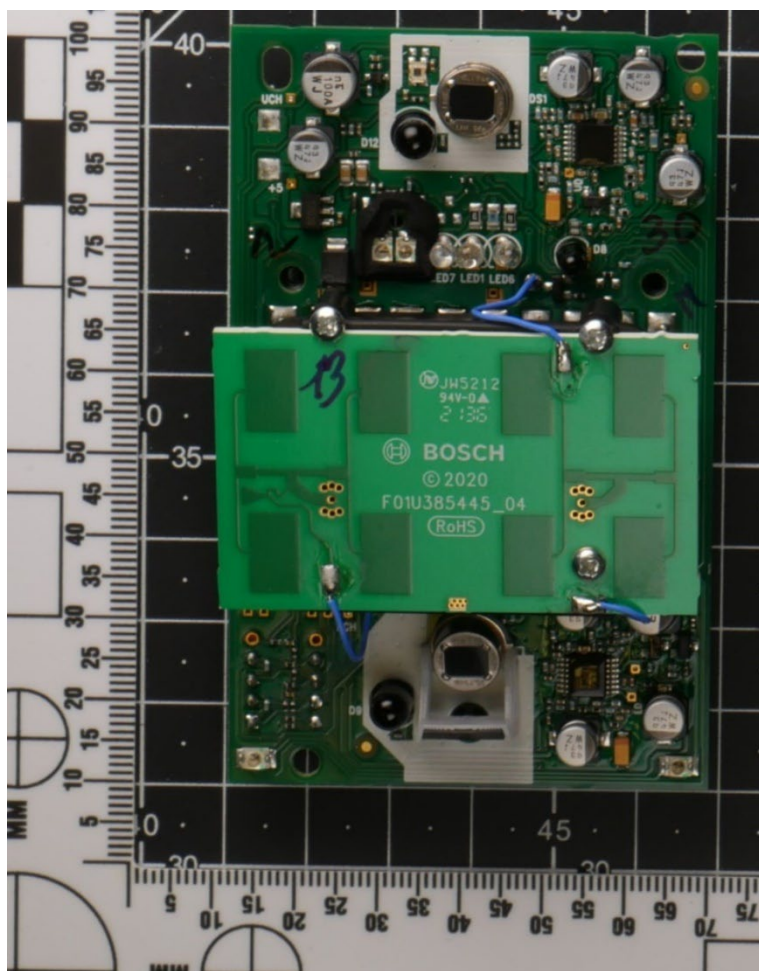
INSIDE FRONT COVER w/PCB & PCB Carrier removed



PCBs Main & Microwave in PCB Carrier

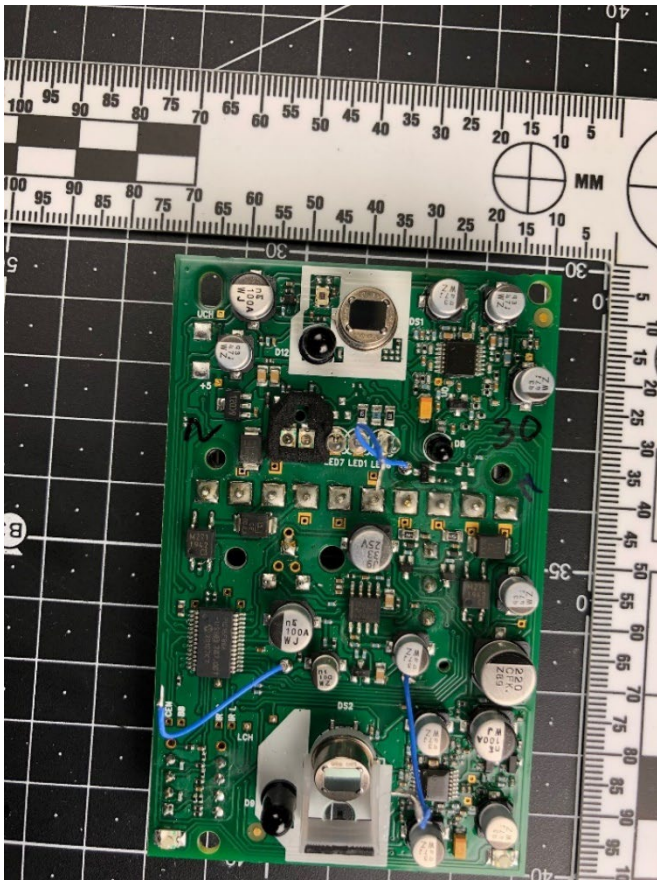


Inside Carrier w/PCBs removed

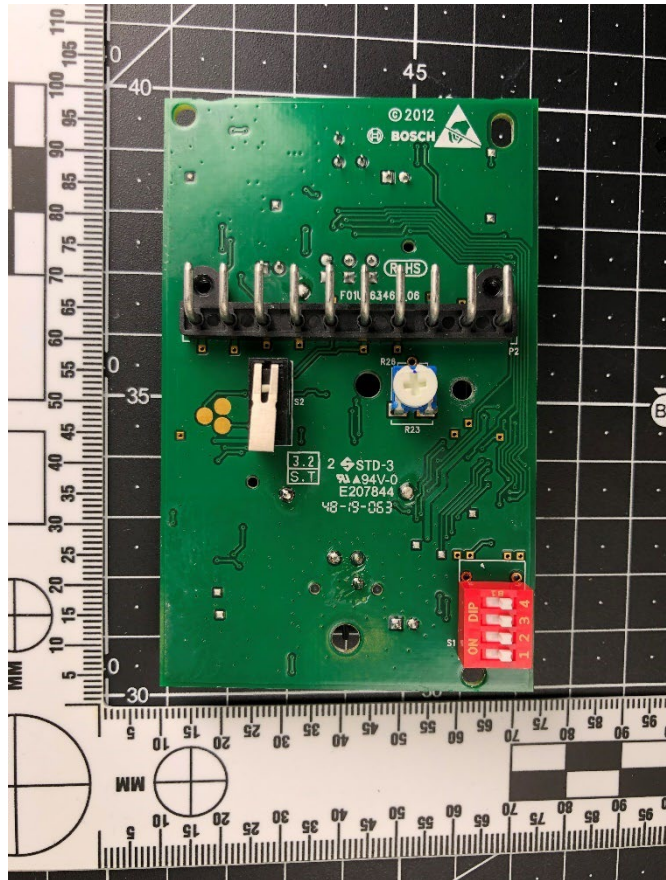


Main PCB &amp; Microwave PCB TOP View

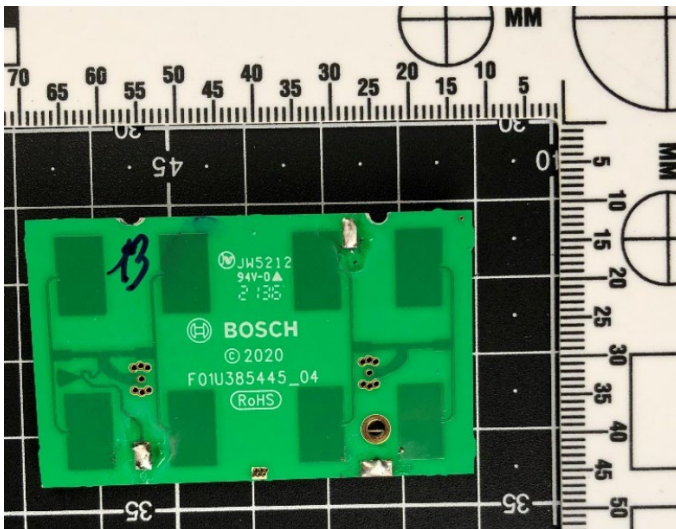




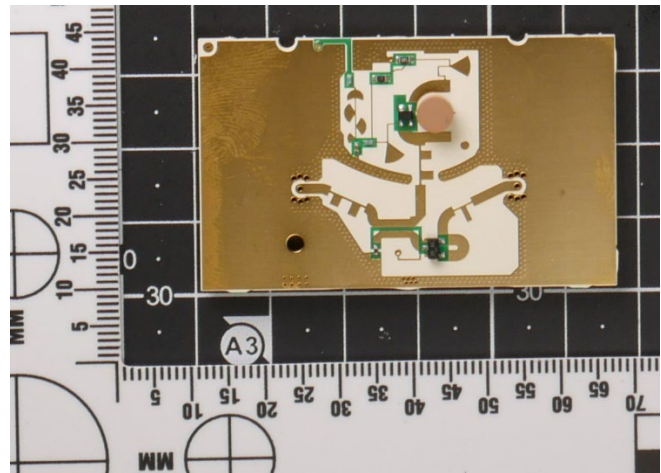
Main PCB TOP w/Microwave PCB removed



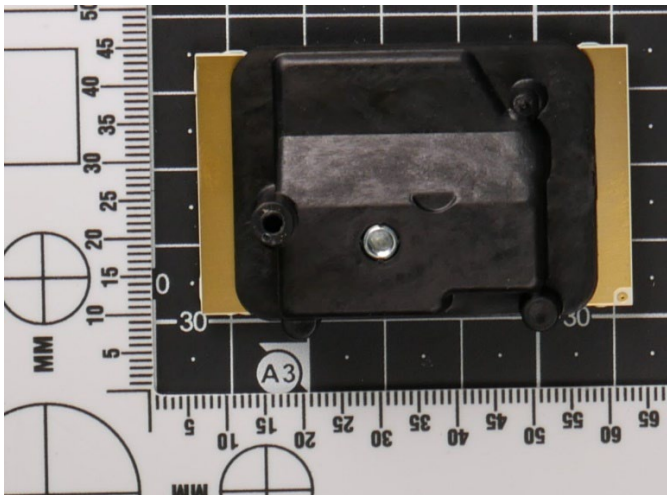
Main PCB Back



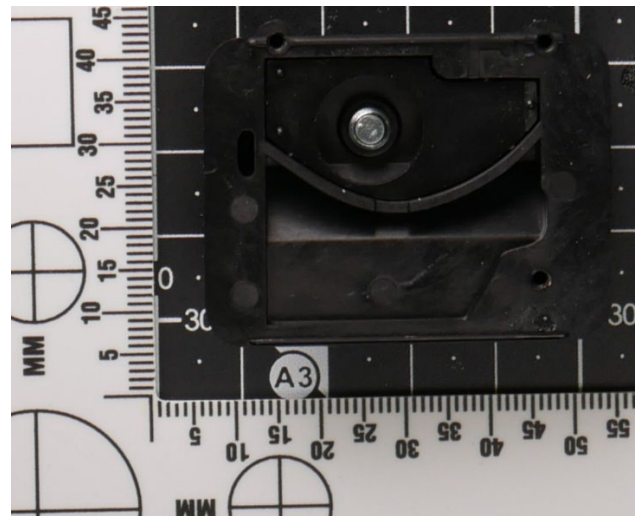
Microwave PCB Top



Microwave PCB Back w/o BackShield



Microwave PCB Back w/BackShield



BackShield Inside