



**Digital Media Access**  
Digital Home Edition  
**User Manual**  
V1.2



**Touching Today's World  
With Tomorrow's Technology**

**Patent Pending**

## Copyright

This publication, including all photographs, illustrations and software, is protected under international copyright laws, with all rights reserved. Neither this manual, nor any of the material contained herein, may be reproduced without written consent of the author.

Version 1.1, March 2006

## Disclaimer

The information in this document is subject to change without notice. The manufacturer makes no representations or warranties with respect to the contents hereof and specifically disclaims any implied warranties of merchantability or fitness for any particular purpose. The manufacturer reserves the right to revise this publication and to make changes from time to time in the content hereof without obligation of the manufacturer to notify any person of such revision or changes.

## Trademark Recognition

CompactFlash and SanDisk are trademarks of SanDisk Corporation, registered in the United States and other countries. Kingston is a registered trademark of Kingston Technology Company, Inc. RiDATA is a registered trademark of RITEK Corporation. Transcend is a trademark or registered trademark of Transcend Information, Inc. in the Republic of China and other countries. Windows is either a registered trademark or trademark of Microsoft Corporation in the United States and/or other countries.

All other product names used in this manual are the properties of their respective owners and are acknowledged.

## Federal Communications Commission (FCC)

This equipment has been tested and found to comply with the limits for a Class A digital device, pursuant to Part 15 of the FCC Rules. These limits are designed to provide reasonable protection against harmful interference in a residential installation. This equipment generates, uses, and can radiate radio frequency energy and, if not installed and used in accordance with the instructions, may cause harmful interference to radio communications. However, there is no guarantee that interference will not occur in a particular installation. If this equipment does cause harmful interference to radio or television reception, which can be determined by turning the equipment off and on, the user is encouraged to try to correct the interference by one or more of the following measures:

- **Reorient or relocate the receiving antenna.**
- **Increase the separation between the equipment and the receiver.**
- **Connect the equipment onto an outlet on a circuit different from that to which the receiver is connected.**
- **Consult the dealer or an experienced radio/TV technician for help.**

Shielded interconnect cables and a shielded AC power cable must be employed with this equipment to ensure compliance with the pertinent RF emission limits governing this device. Changes or modifications not expressly approved by the system's manufacturer could void the user's authority to operate the equipment.

## **Declaration of Conformity**

This device complies with part 15 of the FCC rules. Operation is subject to the following conditions:

- **This device may not cause harmful interference, and**
- **This device must accept any interference received, including interference that may cause undesired operation.**

## **FCC Caution**

Any changes or modifications not expressly approved by the party responsible for compliance could void the user's authority to operate this equipment.

The antenna(s) used for this transmitter must not be co-located or operating in conjunction with any other antenna or transmitter.

## **FCC Radiation Exposure Statement**

This equipment complies with FCC radiation exposure limits set forth for an uncontrolled environment. This equipment should be installed and operated with minimum distance 20cm between the radiator & your body.

## **About this manual**

This manual provides information for setting up and configuring the deBoxx. This manual is intended for end users.

## **Power safety**

- **Only use the supplied power cord.**
- **Do not place anything on the power cord. Place the power cord where it will not be in the way of foot traffic.**
- **Remove the batteries from the remote control when storing or not in use for a prolonged period.**
- **Unplug the power cord before cleaning. Refer to “Cleaning the deBoxx” on page 87.**

# Table of Contents

<b>Getting Started with the deBoxx</b> .....	<b>1</b>
Unpacking .....	1
Identifying components .....	2
Front view .....	2
Rear view .....	3
The Remote control .....	4
Remote control range .....	5
Remote control battery .....	5
Attaching the deBoxx stand and antenna .....	7
Installing a hard drive .....	7
Supported hard drives .....	7
Installation .....	8
Formatting the hard drive .....	11
Using CompactFlash® cards .....	15
Inserting and removing a card .....	16
Supported cards .....	16
 <b>Connecting Devices and Using the</b>	
<b>PC Manager Program</b> .....	<b>17</b>
Connecting devices .....	17
Connecting to a computer .....	17
Connecting to a network .....	18
Connecting to a TV or projector .....	18
Connecting to a display with a VGA connector .....	20
Connecting power .....	21
The deBoxx PC Manager program .....	21
Installing the software .....	21
Using the software .....	23
Network settings .....	26
Determining the type of IP network address .....	26
Changing the OSD language .....	27
Configuring network settings for the deBoxx .....	28
Testing your network connection .....	40
 <b>Operating the deBoxx</b> .....	<b>43</b>
Moving around menus and changing settings .....	43
Streaming media from a network with MOD .....	44
Playing back your media .....	45
Watching movies .....	46
Adjusting movie playback settings .....	46
Movie context menu .....	48

Listening to music . . . . .	50
Audio context menu.....	52
Viewing photos . . . . .	54
Adjusting photo playback settings.....	54
Photo context menu .....	56
Preview in 1-Pic mode (slide show off) .....	58
Preview in 4-Pic mode (slide show off) .....	59
Setting up and viewing slide shows.....	60
Using the deBoxx as a removable hard drive . . . . .	62
Copying files to and from a CompactFlash card . . . . .	62
Supported cards .....	62
Copying files to a CompactFlash card.....	63
Copying files from a CompactFlash card to a hard drive.....	65

## **Exploring the OSD Menus - - - - - 69**

Navigating the menus . . . . .	69
The Movie menu . . . . .	70
Working with movie files.....	70
The Music menu . . . . .	71
Working with audio files .....	71
The Photo menu . . . . .	72
Working with image files .....	72
The HDD menu . . . . .	72
The CF menu . . . . .	73
The Setup menu . . . . .	73
The Sound submenu .....	74
The Clock submenu .....	75
The Power submenu .....	76
The Playmode submenu.....	76
The Display submenu .....	77
The System submenu .....	78
The Network submenu.....	80
The MOD menu . . . . .	82

## **Appendix - - - - - 85**

Troubleshooting . . . . .	85
Tips for troubleshooting .....	85
Specific problems .....	85
Having the deBoxx serviced . . . . .	86
Updating the firmware . . . . .	86
Cleaning the deBoxx . . . . .	87
Specifications . . . . .	87
Warranty . . . . .	88

## **Index - - - - - 89**

# Getting Started with the deBoxx

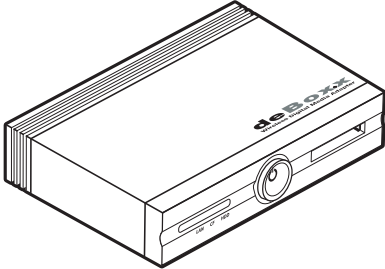
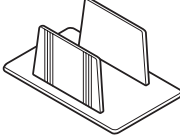

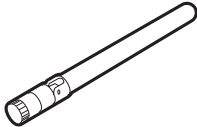
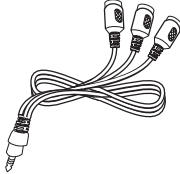
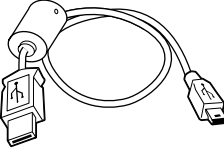
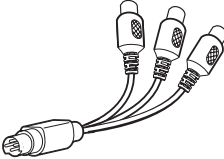
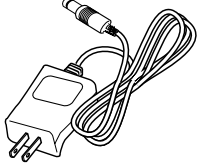
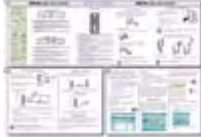


---

The deBoxx is a wireless network multimedia device. Connect the deBoxx to your TV (or projector) and you are ready to stream movies, music, or photos from any computer in your home to your TV. This section covers the following topics:

- “Unpacking” on page 1
- “Identifying components” on page 2
- “The Remote control” on page 4
- “Attaching the deBoxx stand and antenna” on page 7
- “Installing a hard drive” on page 7

## Unpacking

Unpack the deBoxx and check that the following items are included.

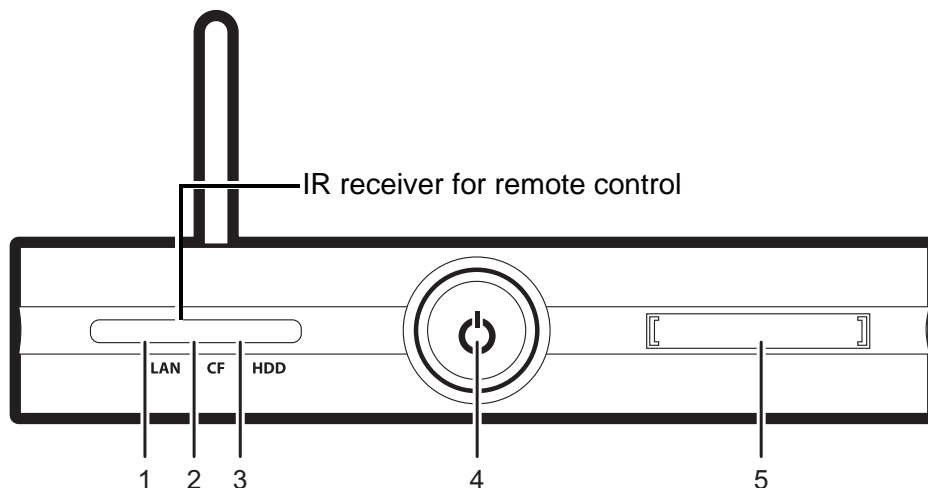
			
deBoxx	Stand	Remote control	Antenna
			
Mini AV cable	USB cable	Component adapter	Power adapter
			
Quick Start Guide	Software CD	Warranty	

If any item is missing or appears damaged, repack the deBoxx and return it to your dealer.

## Identifying components

The following illustrations show views of the deBoxx.

### Front view



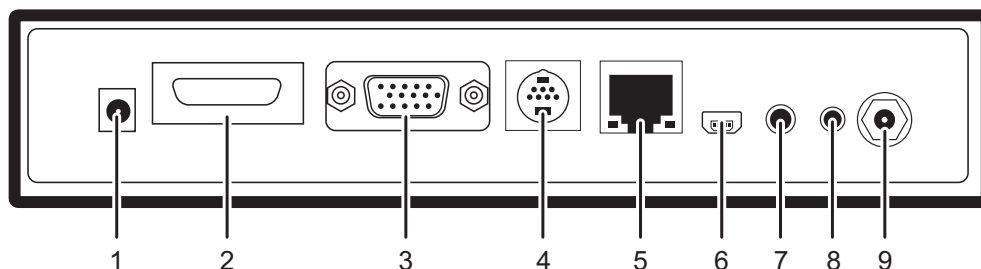
1	LAN LED - lights green when connected to a wired or wireless network (see <b>Note</b> below); flashes when a network is accessed
2	CF LED - lights red when a CompactFlash® card is inserted
3	HDD LED - flashes blue when a CompactFlash card or installed hard drive is accessed
4	Power button - push to power on/off
5	CompactFlash drive (see “Using CompactFlash® cards” on page 15)



#### **Green LAN LED**

The LAN LED lights green when connected to both a wired and wireless network. However, if the network router or wireless access point (AP) is not powered on, the LED will not light.

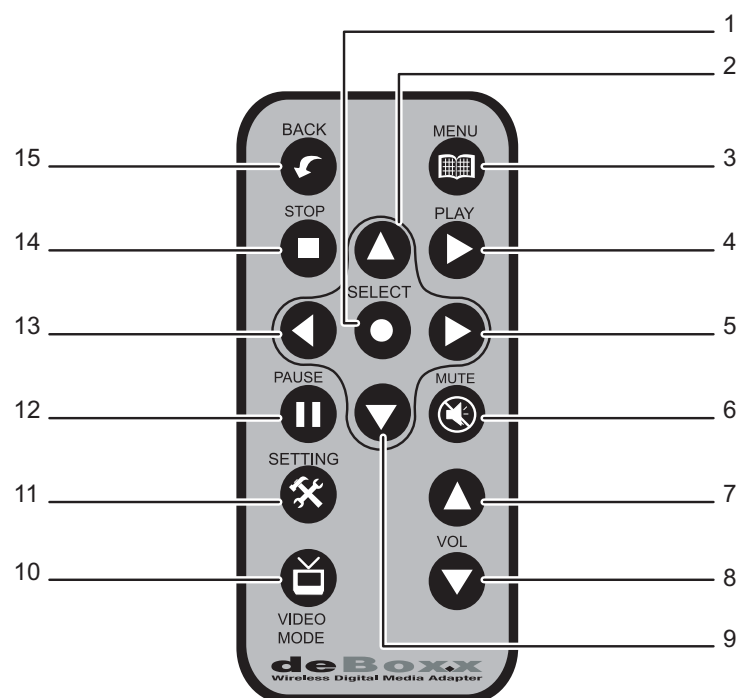
## Rear view



1	Power connector - connect the supplied power adapter
2	Reserved for future expansion use
3	VGA connector - connect to any display device that has a VGA connector
4	S-video (multi-function) connector - connect to any display device that has an S-video connector or component connectors
5	LAN connector - connect to a computer or home network
6	USB connector - connect to a computer
7	Mini AV connector - connect to audio devices and any display device that has a composite connector
8	IR receiver extension connector - connect an optional IR extension cable
9	Antenna connector (see "Attaching the deBoxx stand and antenna" on page 7)



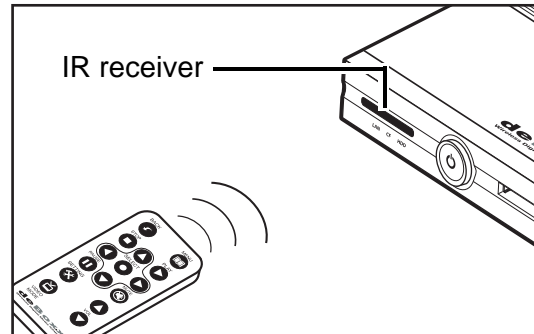
## The Remote control



1	SELECT	Enter submenus, confirm settings, play/open selected file
2	UP	Navigate up in OSD menus
3	MENU	Access the main OSD menu
4	PLAY	Play and resume playback of paused media
5	RIGHT	Navigate right in OSD menus or open a pop-up menu for selected media (press BACK to close the pop-up menu)
6	MUTE	Turn sound off
7	VOL UP	Increase volume and adjust settings in OSD (maximum: 12)
8	VOL DOWN	Decrease volume and adjust settings in OSD (minimum: 0 = mute)
9	DOWN	Navigate down in OSD menus
10	VIDEO MODE	Change the video mode to one your display is compatible with. Consult your display's documentation.
11	SETTING	Adjust display and sound settings on the deBoxx during playback
12	PAUSE	Pause playback of sound and video
13	LEFT	Navigate left in OSD menus or open a pop-up menu for selected media (press BACK to close the pop-up menu)
14	STOP	Stop sound, video or slide shows
15	BACK	Return to a previous OSD menu

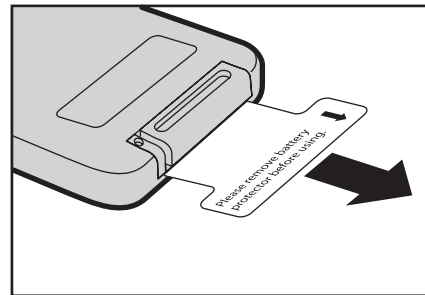
## Remote control range

The remote control has a range of up to 15 meters. Be sure there are no obstructions between the remote control and the deBoxx. Remember to point the remote control at the IR receiver on the deBoxx and not on your TV.



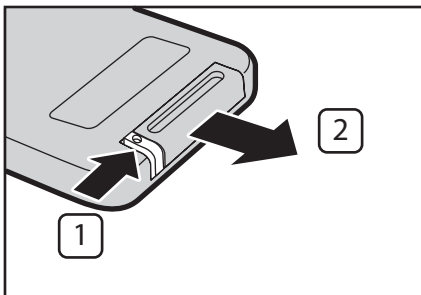
## Remote control battery

The remote control battery has a protective cover that must be removed prior to first use. Pull the plastic tab out to start using the remote control. Store the plastic tab with the deBoxx packing materials in case you need to return or ship the deBoxx.

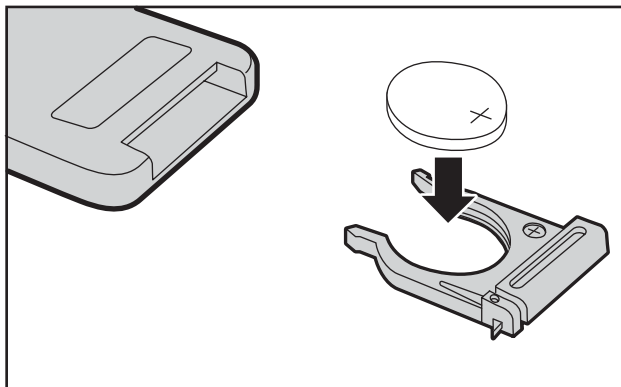


To replace the remote control battery follow these steps.

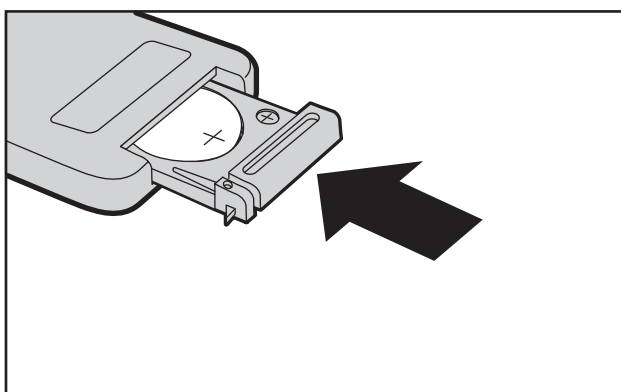
1. Push the release tab (1) and remove the battery holder (2).



2. Place a new battery (3V, CR2025) in the holder. Be sure the polarity marking is as shown in the following illustration.



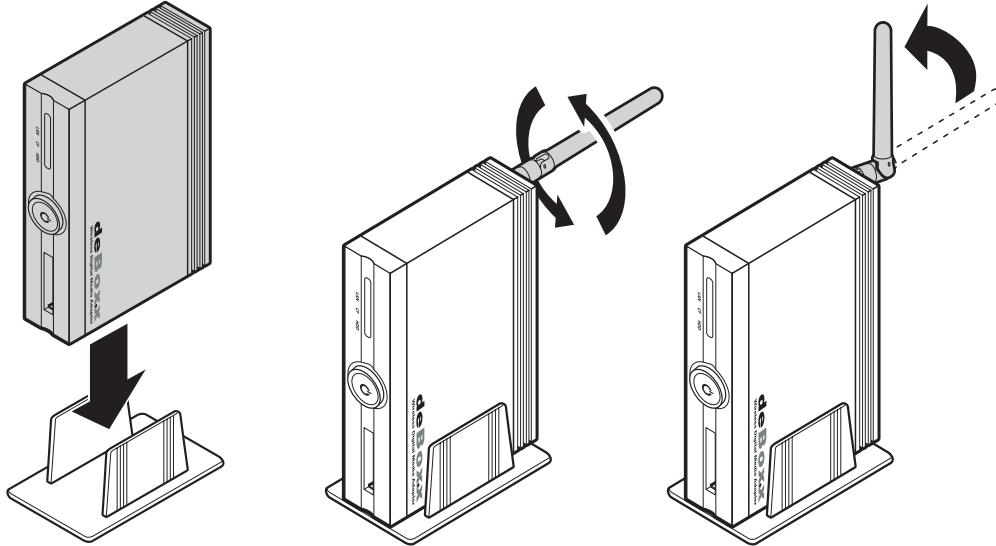
3. Replace the battery by pushing the battery holder into the remote control until the release tab clicks.



Discard used batteries in accordance with local regulations. Do not dispose of batteries with household waste.

## Attaching the deBoxx stand and antenna

Insert the deBoxx into the stand. Attach the antenna and adjust it until it is perpendicular to the connector.



You only need to attach the antenna if you are going to use the wireless function of the deBoxx.

## Installing a hard drive

You can install a 2.5-inch hard drive in the deBoxx. Music and video can then be stored on the deBoxx and played back in your car or any location where a computer monitor or TV is available. A network connection or computer is not required to play media from the hard drive.

### Supported hard drives

You can install any capacity 2.5-inch, IDE/ATA hard drive in the deBoxx. Note the following.

- We recommend the new hard drive be installed by a professional at the place of purchase.
- Provide the service personnel with this documentation.

## Installation

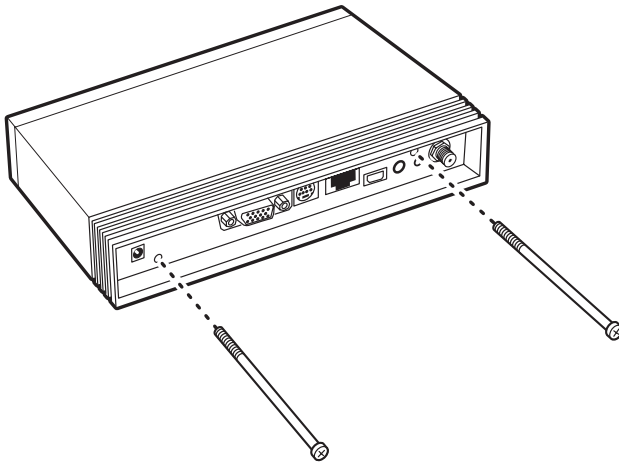
Refer to the following to install a hard drive in the deBoxx.



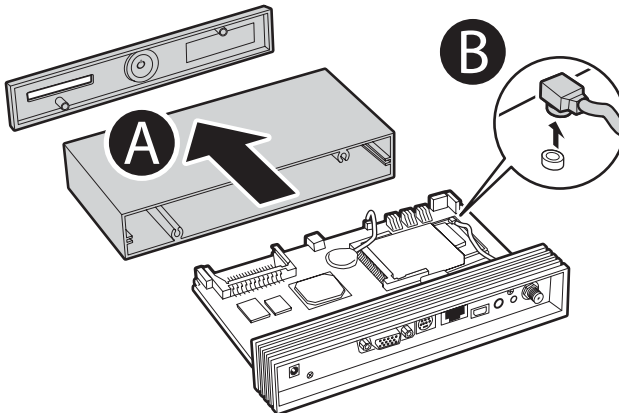
When handling hard drives:

- Do not apply pressure to the cover of the drive.
- Do not drop the drive. Dropping the drive from a short distance onto a table can be enough to damage the drive.
- Do not touch the connectors. The connectors are easily bent or damaged.

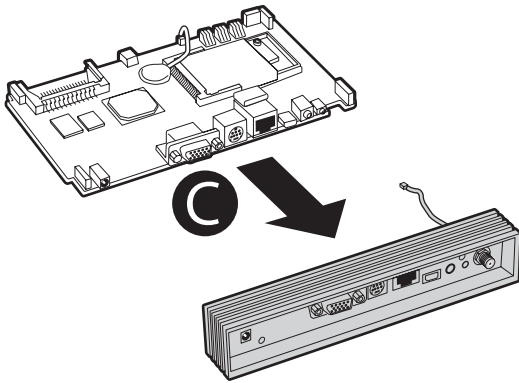
1. Remove the two screws from the rear side.



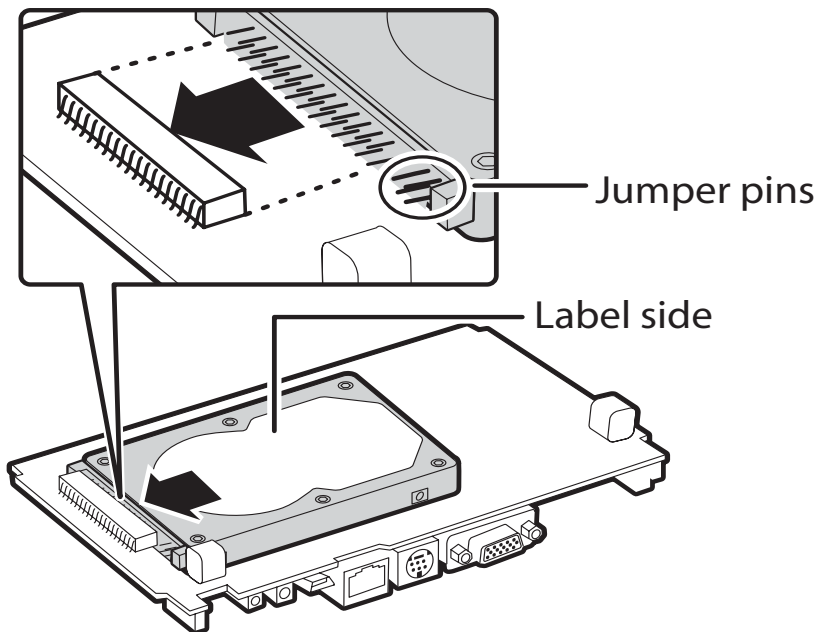
2. Remove the front panel and the case (A). Disconnect the wireless antenna cable (B). Do not remove the rear panel (C) until you have disconnected the wireless antenna cable.



3. Remove the rear panel (C).

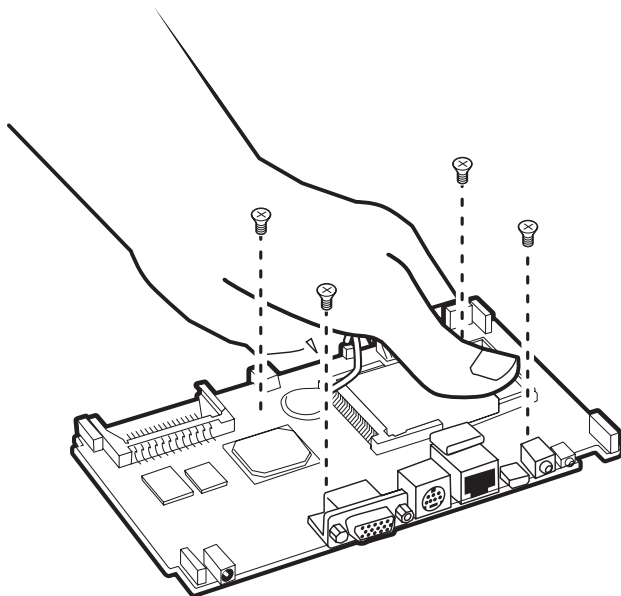


4. Turn the circuit board over. With the hard drive label side facing up, align the hard drive connector with the connector on the board. Then firmly connect the hard drive to the board.

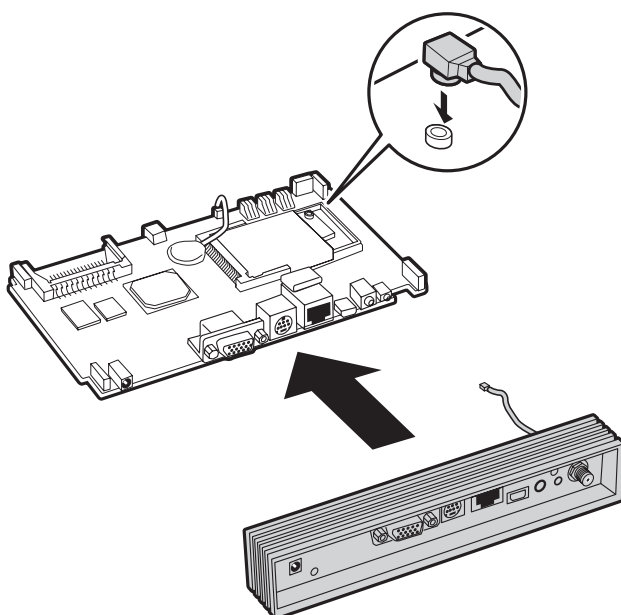


**Important:** The jumper pins on the drive do not connect to the board. Jumper pins are provided on a hard drive for configuring multiple drives. You do not need to set jumpers on the drive as this is managed automatically by the deBoxx software.

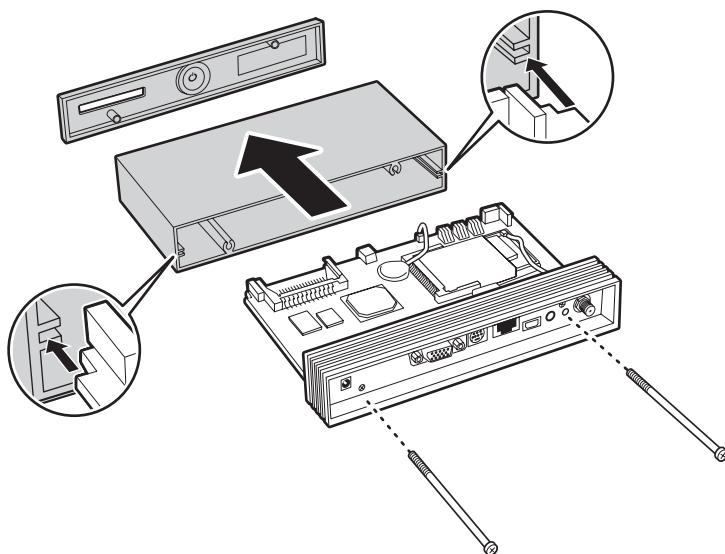
5. Holding the hard drive in place, turn the circuit board over and then secure the hard drive with four screws. (Be sure to use only the screws that were packed with the hard drive.)



6. Reconnect the wireless antenna cable.



7. Align the edges of the circuit board with the slots in the enclosure and slide the circuit board into the case. Replace the screws.



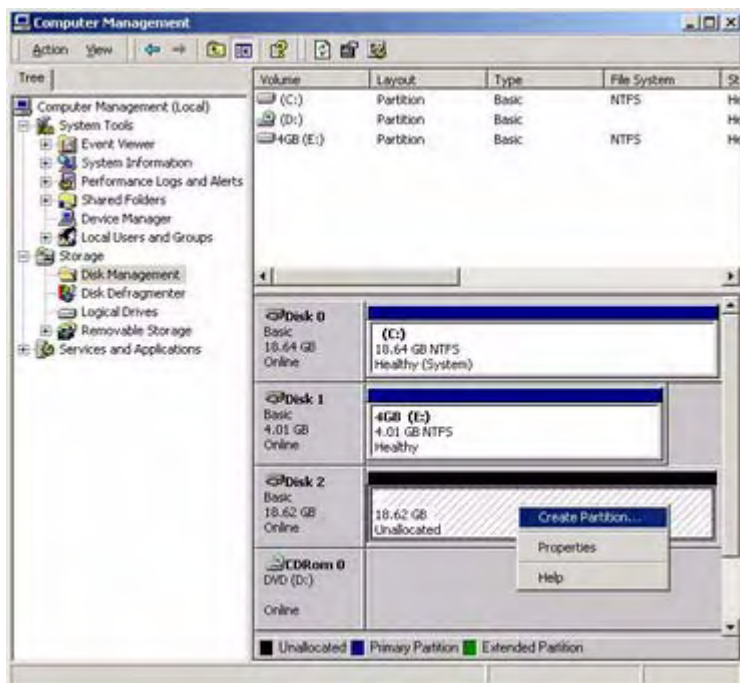
### Formatting the hard drive

Hard drives sizes are measured in gigabytes (GB) and drives of 100 GB and more are common. A new hard drive must be formatted before use. Some manufacturers include a disk utility with the drive for this purpose. The following instructions work for drives up to 40 GB. If your hard drive is bigger than 40 GB, use the disk utility which came with the drive to format it.

1. Connect the deBoxx to a computer using the supplied USB cable. See “Connecting to a computer” on page 17.



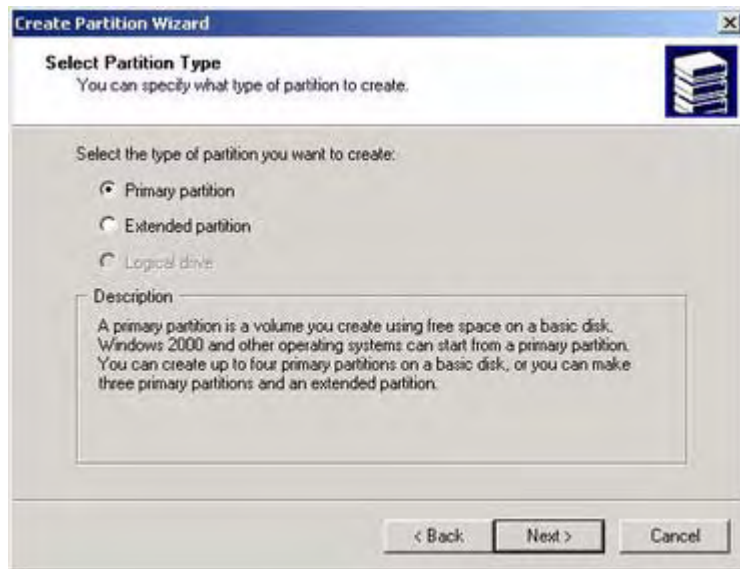
- Go to **Start Menu-> Control Panel-> Administrative Tools-> Computer Management**. Choose **Storage-> Disk management**. The following screen appears.



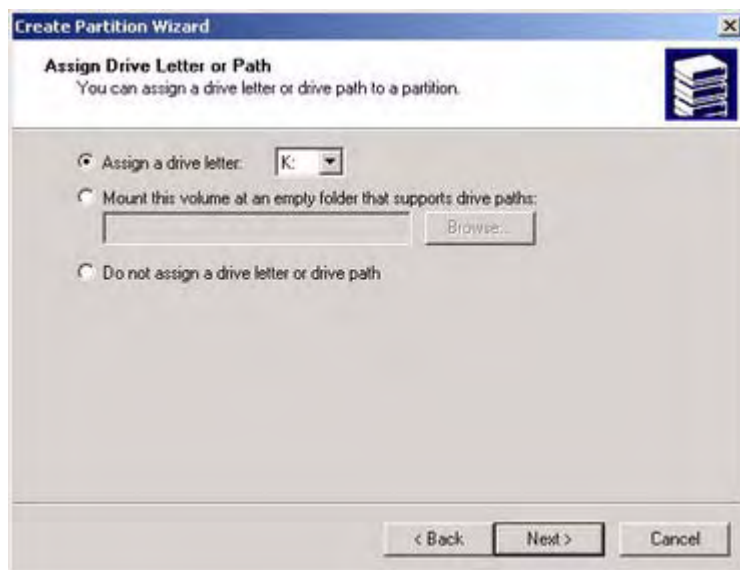
- Navigate to the new hard drive. Right-click the drive and choose **Create Partition** from the context menu.



4. Click **Next** to continue.

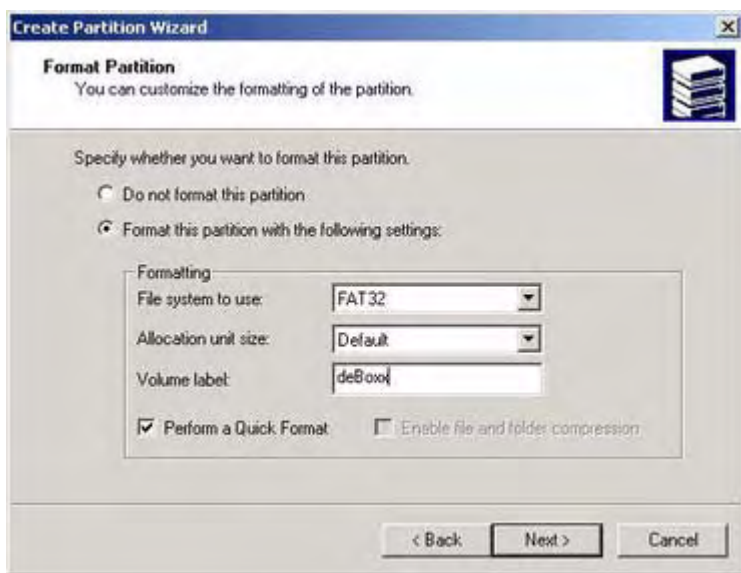


5. Select the **Primary partition** radio button and click **Next**.

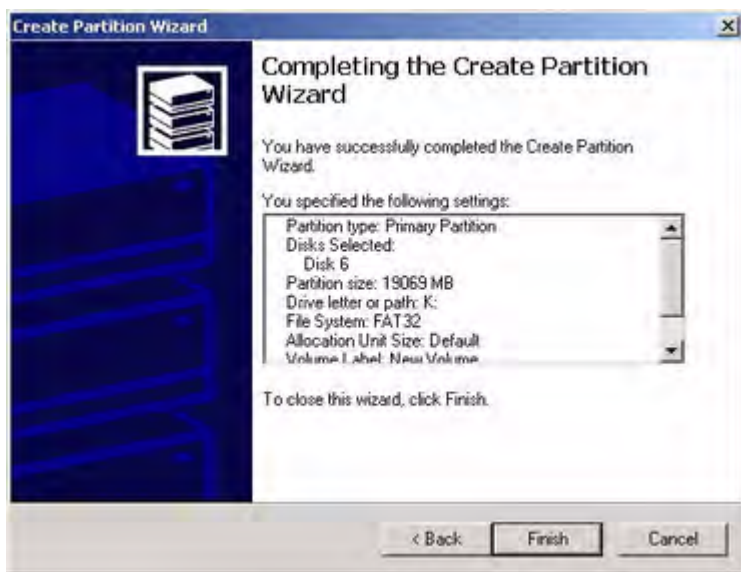


**Note:** The deBoxx software only recognizes the first partition of a multi-partition drive. (You will still be able to access other partitions by USB. See “Using the deBoxx as a removable hard drive” on page 62.)

6. Select the **Assign a drive letter** radio button and click **Next**.



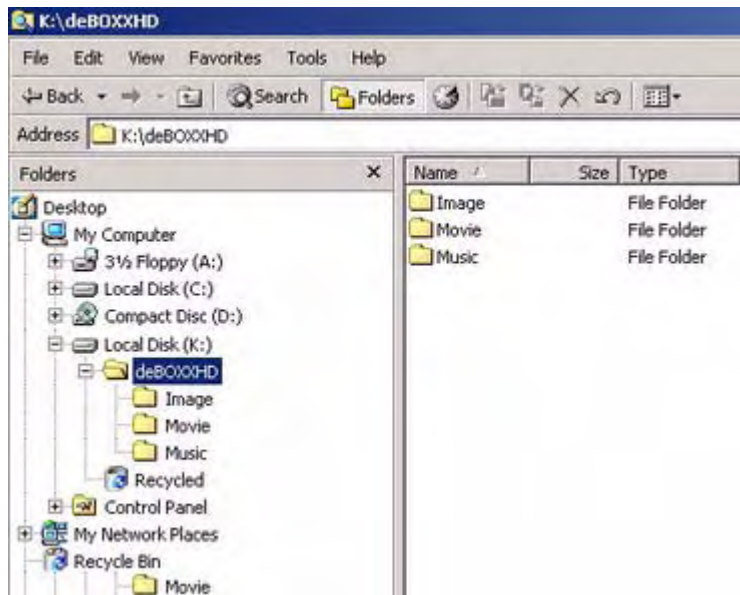
7. In the Format Partition window:  
 Select the **Format this partition with the following settings** radio button  
 File system to use: **FAT32**  
 Volume label: Type a descriptive volume label  
 Check **Perform a quick format**  
 Click **Next** to continue.



You must choose the **FAT32** format option when formatting the hard drive. The deBxxx will not recognize the drive if you choose **NTFS**.

8. Click **Finish** to continue.

9. After the operation is complete create a folder at the root of the newly formatted hard drive and name it **deBoxxHD**. (The folder name is case-sensitive.)
10. Make three sub-folders named; **Image**, **Movie** and **Music**. (The folder names are case-sensitive.)



## Using CompactFlash® cards

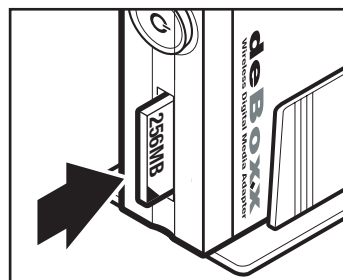
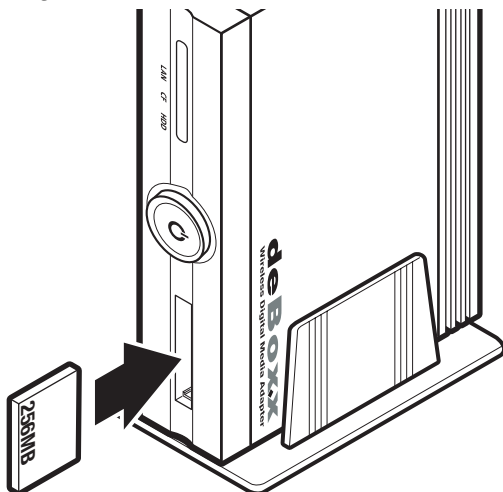
You can insert a CompactFlash card into the deBoxx and view the media on the card or copy it to the deBoxx hard drive. You do not have to turn off the deBoxx to insert a card.



The CompactFlash drive is keyed to prevent the card being inserted the wrong way. The card may damage the deBoxx if forced in the wrong orientation.

## Inserting and removing a card

1. Align the card with the slot on the deBoxx as shown.



2. The card does not go in all the way. Push the card firmly into the slot until it stops.
3. Pull the card out to remove it.

## Supported cards

The following cards are supported for playback and copying to the deBoxx. Cards not listed here may still be good for playback but not for copying to the deBoxx hard drive.

Company	Capacity
Kingston®	1024 MB
SanDisk®	1.0 GB
Transcend®	1.0 GB
RiDATA®	1.0 GB

# Connecting Devices and Using the PC Manager Program

---

The deBoxx can be used as a portable multimedia device or integrated into your existing home entertainment center. This section covers the following topics:

- “Connecting devices” on page 17
- “The deBoxx PC Manager program” on page 21
- “Network settings” on page 26

## Connecting devices

This section covers connecting the deBoxx to a computer, a network, and a TV or projector.

### Connecting to a computer



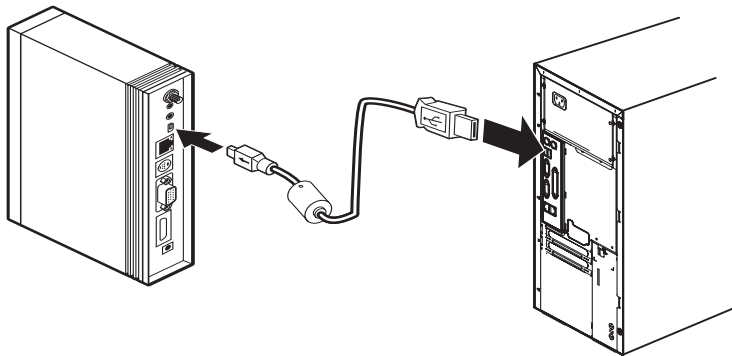
#### ***No hard drive installed?***

You can skip this section if you have not installed a hard drive in the deBoxx.

You can connect the deBoxx to your computer with the supplied USB cable. The operating system on your computer detects the deBoxx as an external hard drive. You can then copy files to and from the deBoxx hard drive using the PC Manager program.



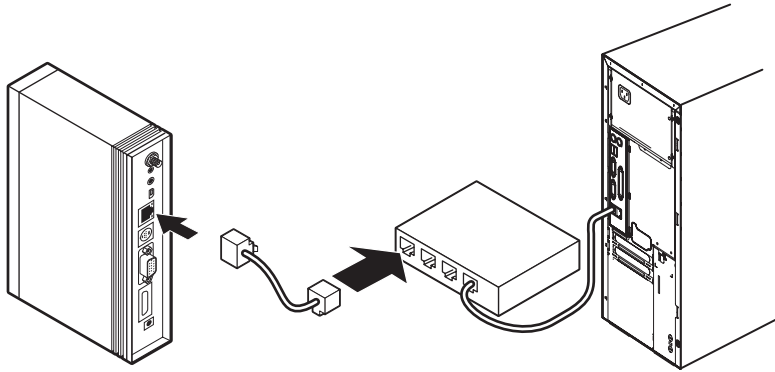
Forcing the USB connectors to insert the wrong way can damage the connectors on the deBoxx and on your computer.



1. Connect the small USB connector to the USB connector on the deBoxx.
2. Connect the other end to a USB connector on the computer.

## Connecting to a network

Connect the deBoxx to a network with an RJ-45 Ethernet cable (not supplied).



1. Connect the Ethernet cable to the Ethernet connector on the deBoxx as shown.
2. Connect the other end to a switch or router on your network.

## Connecting to a TV or projector

You can connect the deBoxx to your TV, a projector, or a computer monitor to view movies or photo slide shows. There are several options to connect to a video output device. Most TVs have connectors on the front and output is switched to these connectors by switching the source on the TV to AV1 and AV2.

The supplied Mini AV and component adapter cables are color coded.

### Mini AV

Yellow - composite video

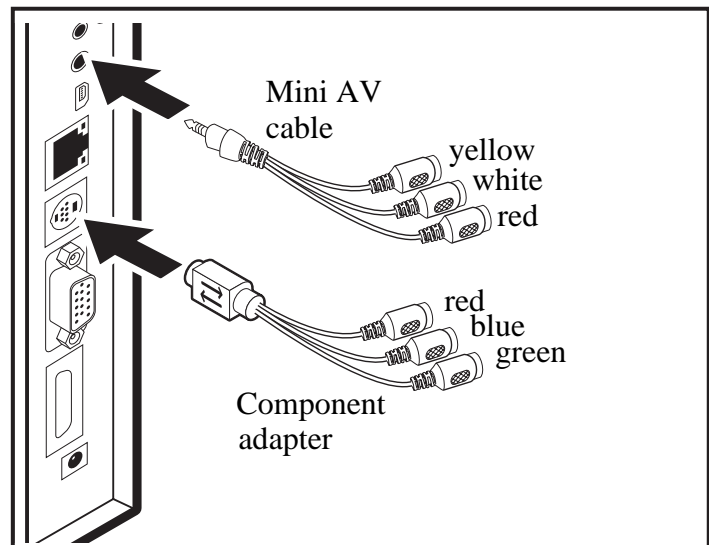
White - left audio

Red - right audio

### Component adapter

Red, blue, green - component video

You can purchase composite and component cables to connect to the supplied cables at any electrical store.

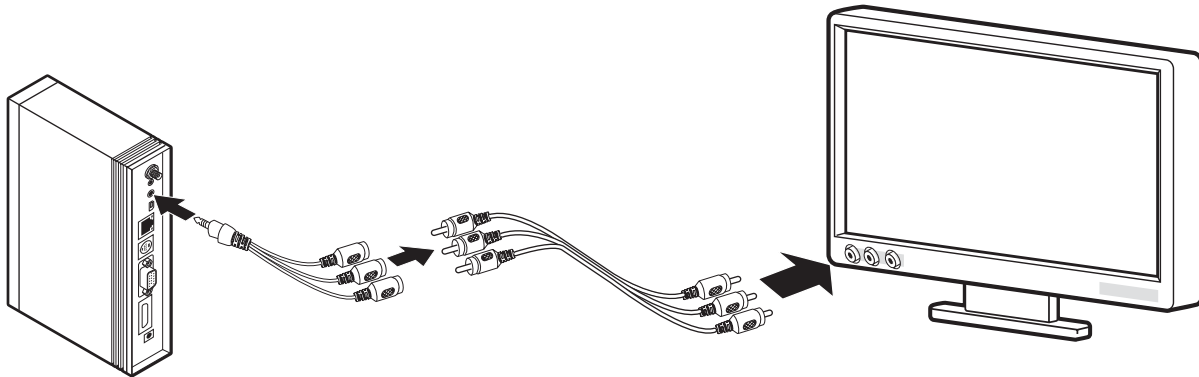




When possible use the component video or S-video connection. S-video provides a better resolution than composite video, but is not as sharp as component video.

### **MINI AV CABLE**

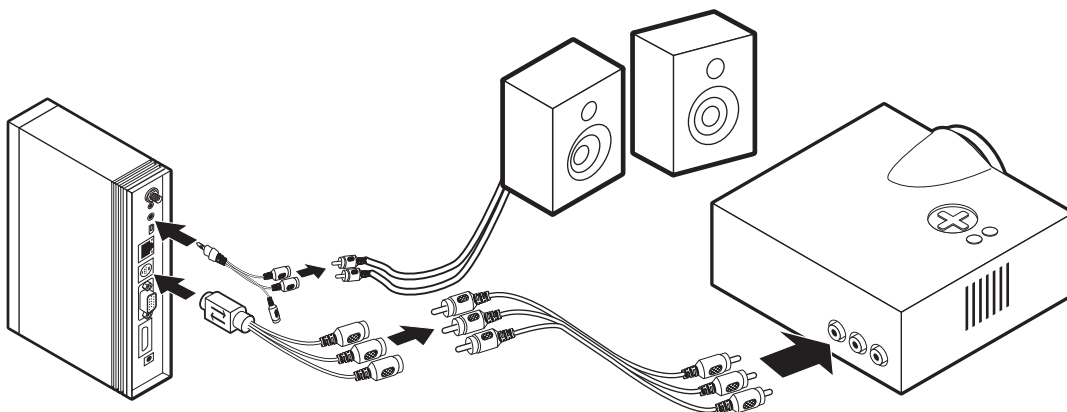
You will need the supplied Mini AV cable and a composite AV cable (not supplied) for this connection.



1. Connect the Mini AV cable to the deBoxx.
2. Connect a composite AV cable to the corresponding colored RCA jacks on the Mini AV cable.
3. Connect the other end of the AV cable to the corresponding colored RCA jacks on the TV.

### **COMPONENT VIDEO**

You will need the supplied component adapter and a component video cable (not supplied) to connect to a video display device such as a projector or TV that uses component video. For the audio connection, you will need a composite AV cable (not supplied). For audio output only use the red/white RCA connectors.



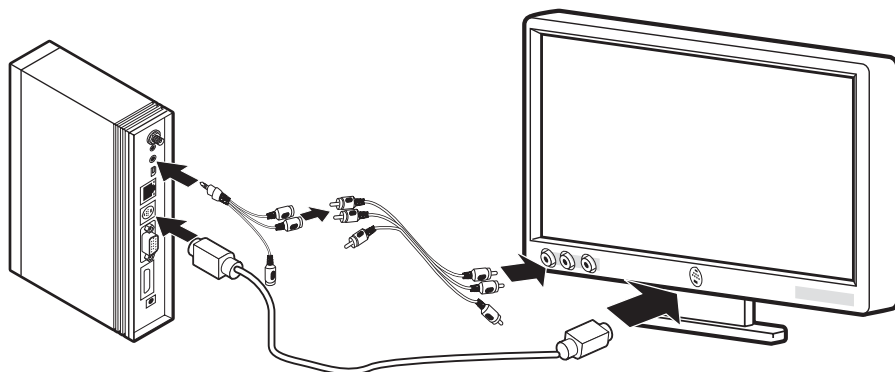
1. Connect the supplied component adapter to the S-video connector on the deBoxx.



2. Connect a component video cable to the corresponding colored jacks on the component adapter.
3. Connect the other end of the component video cable to the corresponding colored jacks on the projector or TV.
4. Connect the Mini AV cable to the deBoxx.
5. Connect the white and red (audio) connectors on a composite AV cable to the corresponding colored jacks on the Mini AV cable.
6. Connect the other end to a stereo system or speakers.

### **S-VIDEO**

Use the S-video connection with a video display device such as a projector or TV that uses S-video. For this connection, you will need the supplied Mini AV cable, a composite AV cable (not supplied), and an S-video cable (not supplied). For audio output only use the red/white RCA connectors.



1. Connect an S-video cable to the S-video connector on the deBoxx.
2. Connect the other end to the S-video connector on the TV.
3. Connect the Mini AV cable to the deBoxx.
4. Connect the white and red (audio) connectors on a composite AV cable to the corresponding colored jacks on the Mini AV cable.
5. Connect the other end to a stereo system or the TV.

### **Connecting to a display with a VGA connector**

VGA connectors are found on all computer monitors. They are also found on some LCD TVs and projectors. Refer to the following to connect the deBoxx to a display that has a VGA connector.

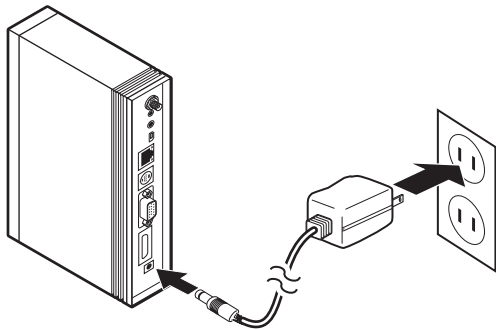


Ensure the refresh rate for the display is set to 62 Hertz or above. See the user manual of the display for more information.

1. Connect the VGA cable from the monitor to the VGA connector on the deBoxx.
2. Connect the Mini AV cable to the deBoxx.
3. Connect the white and red (audio) connectors on a composite AV cable to the corresponding colored jacks on the Mini AV cable.
4. Connect the other end to a stereo system or speakers.
5. Turn on the computer monitor.
6. Turn on the deBoxx and press the **VIDEO MODE** button repeatedly on the remote control to select **VGA**.

## Connecting power

Refer to the following to connect power to the deBoxx.



1. Connect the power adapter to the power connector on the deBoxx.
2. Connect the other end to an electrical outlet.

## The deBoxx PC Manager program

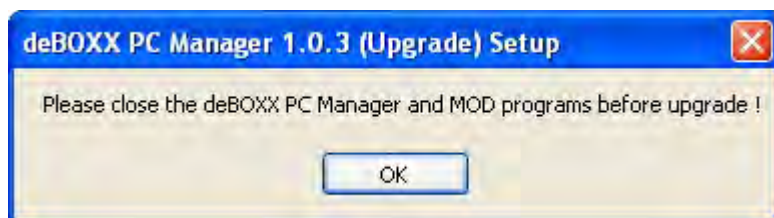
The deBoxx PC Manager program serves two functions. Firstly, it provides a convenient interface for managing files on the deBoxx. Files can be edited or copied to and from the deBoxx. Secondly, it allows streaming media from the computer to a video or audio output device through the deBoxx.

### Installing the software

The deBoxx PC Manager program must be installed on any computer that you want the deBoxx to access. Refer to the following to install the program.

1. Insert the software CD into the CD drive on your computer. The installation starts automatically.  
(If the installation does not start automatically, click Start -> Run. Type **x:autorun.exe**, where

“x” is the drive letter of your CD drive.)



2. Click **OK** to continue.



3. Select the language you want and click **OK**.



4. Click **Next** to continue.



5. Read the legal agreement and click **I Agree**.



6. Click **Finish** to complete the installation.

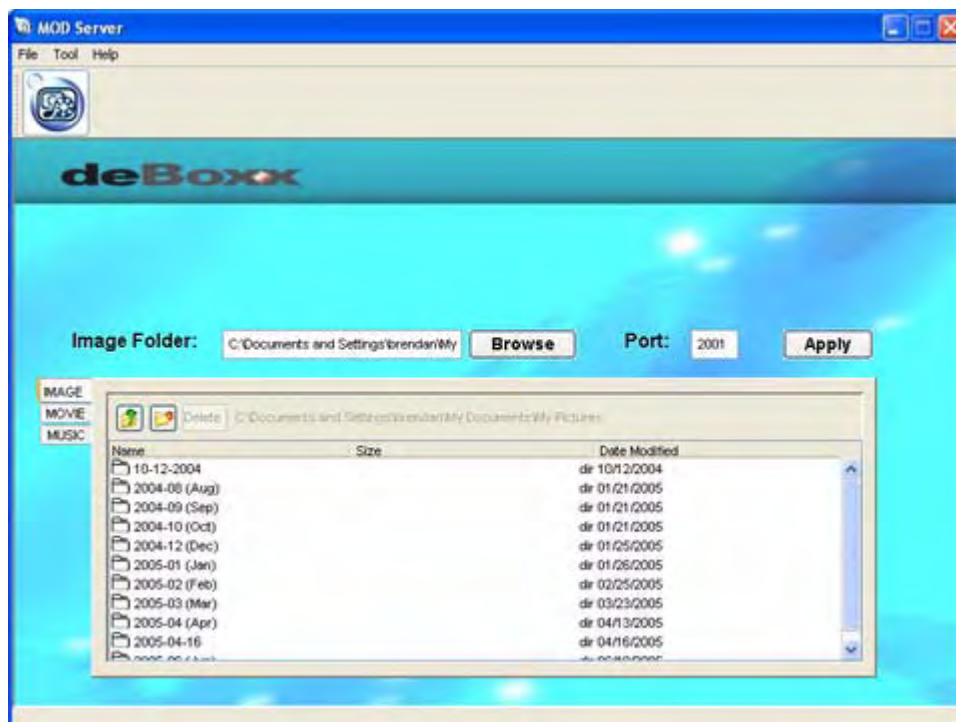
## Using the software

This software has two modes; MOD Only and PC Manager. MOD Only is used to share files and folders on your computer; PC Manager is used for managing playlists and transferring files to a hard drive (if one is installed) on the deBoxx.

## MOD ONLY MODE

MOD Only is used to share files and folders on your computer; the deBoxx can only access files that are shared in this way.

To start MOD Only, right-click the MOD server icon in the system tray and then choose MOD Only.



### Sharing files and folders

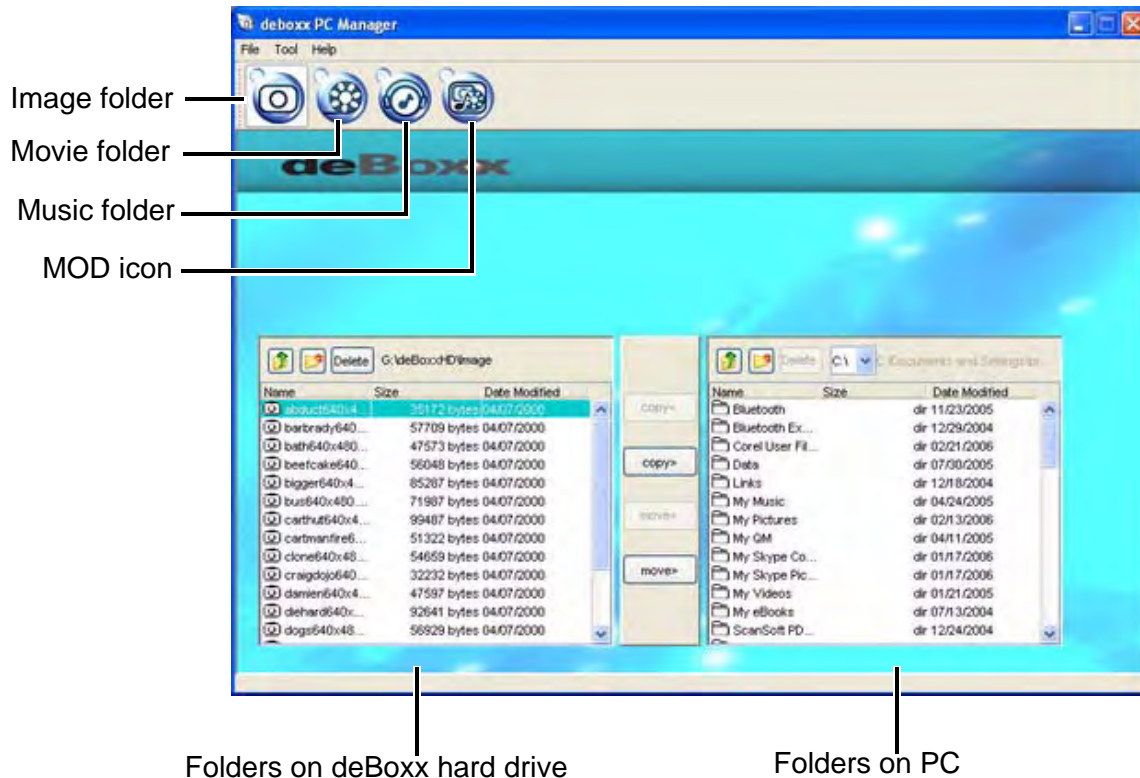
1. Click the **IMAGE** tab.
2. Click the **Browse** button and locate a folder with images you wish the deBoxx to access.
3. Repeat steps 1 and 2 with folders containing movie and music files for the **MUSIC** and **MOVIE** tabs.
4. Click the **Apply** button. The server restarts.



Do not use the **Delete** function to remove files or folders from the MOD Server shared window; doing so deletes the files from your hard drive. To remove folders from the shared window or change shared folders, browse to a new folder and click **Apply**.

## PC MANAGER MODE

PC Manager is used for managing playlists and transferring files to a hard drive (if one is installed) on the deBoxx. The deBoxx must be connected to the computer with the USB cable before you open PC Manager. To start PC Manager, right-click the MOD server icon in the system tray and then choose PC Manager.



### Copying files

Click the Image, Move, and Music icons to open the respective folder on the hard drive that is installed in the deBoxx. The left pane shows the folder on the deBoxx hard drive; the right pane shows folders on your computer. Select files and use the copy or move buttons to copy or move files between the folders.

### Creating audio playlists

1. Click on the Music icon.



2. Click **New Playlist**. A window appears where you name the playlist.

3. Highlight the files you wish to add to the playlist on the left side. Then click the **Copy** button. The files are added to the playlist.

#### **Editing audio playlists**

1. Highlight the playlist file. (Playlist files have the extension .mpu.)
2. Click **Edit playlist** to enter edit playlist mode. The right half of the window changes to show the contents of the playlist.
3. Add new files by highlighting the file on the left then using **Copy** to add it to the playlist.
4. Delete files from the playlist by highlighting them on the right side and pressing the **Delete** button on the right side.
5. When you are finished, press **Edit Playlist** again to exit edit playlist mode. The right half of the window changes back to show the contents of the music folder on the computer.



Be certain you are on the right side and still in edit playlist mode or you may accidentally delete files from the hard drive on your computer.

## **Network settings**

Many homes have more than one computer. The computers can be connected to each other with a central hub, router, or switch to create a network. In order to use the deBoxx to stream media from your computer to your TV, the deBoxx must also be on your network.

All computers (or any device such as a printer) that are on a network, must have a network IP address. The IP address is either assigned manually (a static IP address), or it is assigned automatically (dynamic IP address) by a DHCP router or server. This is the same for both wired and wireless connections.

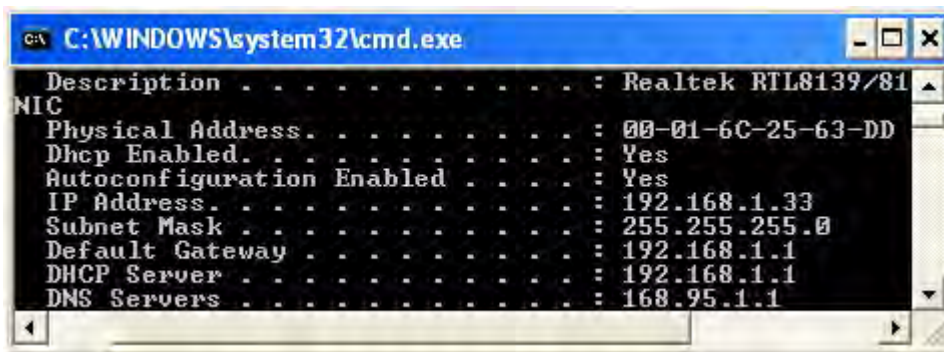
### **Determining the type of IP network address**

Refer to the following to determine if your computer is assigned an IP address automatically or manually.

1. Click **Start -> Run**.
2. Type **cmd** and click **OK**.
3. At the command prompt, type **ipconfig /all**.



4. Look for the line **Dhcp Enabled**.



You may have to scroll up to see it.

If DHCP is enabled, then your router assigns IP addresses automatically. You should use the dynamic settings in the deBoxx network settings for your type of network. See “Wired DHCP (automatic)” on page 28.

If DHCP is not enabled, then you have to manually configure network settings for the deBoxx. See “Wired Static IP address (manual)” on page 30.

## Changing the OSD language

Network settings are changed through the OSD on the deBoxx. You can change the OSD language for your location. (For details on the OSD, see “Exploring the OSD Menus” on page 69.) Refer to the following to change the OSD language. The buttons on the remote control are referred to in bold capitals; the arrow buttons are referred to as **LEFT**, **RIGHT**, **UP**, and **DOWN**.

1. Turn the deBoxx on.
2. Use **UP/DOWN** to highlight **Setup**, and then press **SELECT**.





3. Use **UP/DOWN** to highlight **Display**, and then press **SELECT**.



4. Press **RIGHT/LEFT** to scroll through the available languages.



5. Press **SELECT** to confirm the setting. The OSD language changes and you are returned to the main menu.

## Configuring network settings for the deBoxx

Before changing network settings, connect the deBoxx to your network and TV. The deBoxx must be connected to your network to be assigned an IP address from your router.

### ***WIRED DHCP (AUTOMATIC)***

Use this setting for a wired connection and if your network router assigns IP addresses automatically. (See “Determining the type of IP network address” on page 26.)

1. Use **UP/DOWN** to highlight **Setup**, and then press **SELECT**.



2. Use **UP/DOWN** to highlight **Network**, and then press **SELECT**.



- The Network setting is highlighted. Use **RIGHT/LEFT** to choose **Wired**.



- Press **DOWN** to move to the next field.  
If **IPAssign** is not set to **DHCP** (default setting), highlight it now and use **RIGHT/LEFT** to set it to **DHCP**. A **Please Wait ...** message appears and you are returned to the main menu.
- To confirm that an IP address was assigned, select **Network** and press **SELECT**.  
The Netmask and Gateway address should match your network settings. The IP address should be in the same range. For example, if your computer's IP address is **192.168.001.032**, the IP address of the deBoxx may be **192.168.001.034** or **192.168.001.035**.

### **WIRED STATIC IP ADDRESS (MANUAL)**

Use this setting if your IP address is manually assigned to your computer. (See "Determining the type of IP network address" on page 26.)

- Use **UP/DOWN** to highlight **Setup**, and then press **SELECT**.



2. Use **UP/DOWN** to highlight **Network**, and then press **SELECT**.



3. The Network setting is highlighted. Use **RIGHT/LEFT** to choose **Wired** or **Wireless**.



4. Press **DOWN** to move to the next field.
5. Use **RIGHT/LEFT** to choose **Static IP**.
6. Leave the **ServerExplorer** setting at the default **Broadcast** and press **DOWN** to move to the IP field. The IP address should be different from other computers on your network, but in the same range. For example, if your computer's IP address is **192.168.001.032**, the IP address of the deBoxx must be **192.168.001.034** or **192.168.001.035**.
7. Use **VOL UP/DOWN** to change IP values. Use **RIGHT/LEFT** to move to the next digit. When you are finished, press **DOWN** to move to the **NetMask** field.
8. Enter the same Netmask address as your computer's. Then press **DOWN** to move to the **Gateway** field.
9. Enter the same Gateway address as your computer's.  
(The MAC field is read only. You cannot change these values.)

10. Press **SELECT** to confirm your settings.

A **Please Wait ...** message appears and you are returned to the Setup menu.

### **WIRELESS DHCP (AUTOMATIC)**

Use this setting for a wireless connection and if your wireless network router assigns IP addresses automatically. (See “Determining the type of IP network address” on page 26.)

The security settings you choose in the deBoxx menus have to match the security settings for your wireless router. Log in to your wireless router Web user interface to determine the correct authentication method and encryption key. Refer to your router’s online help for more information.



Wireless networks use WEP (Wired Equivalent Privacy) and WPA (Wi-Fi Protected Access) security protocols to prevent unauthorized access. The deBoxx only supports the Static WEP protocol. It does not support the 802.1x + Dynamic WEP, 802.1x + Static WEP or WPA/WPA-PSK protocols.

1. Use **UP/DOWN** to highlight **Setup**, and then press **SELECT**.





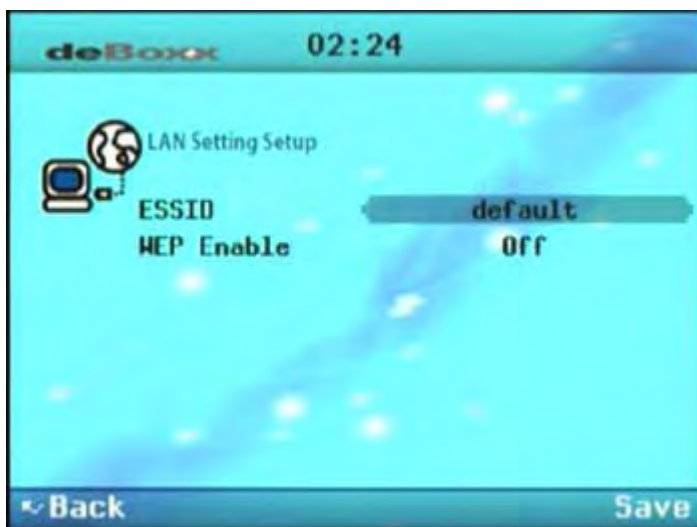
2. Use **UP/DOWN** to highlight **Network**, and then press **SELECT**.



3. The Network setting is highlighted. Use **RIGHT/LEFT** to choose **Wireless**.  
(If **IPAssign** is not set to **DHCP** [default setting], highlight it before going to **Setting** and use **RIGHT/LEFT** to set **IPAssign** to **DHCP**.)



4. Press **DOWN** to move to **Setting** and then press **RIGHT**. The following screen appears.



5. With **ESSID** selected, press **RIGHT**. An on-screen keyboard appears. Type in the SSID (Service Set Identifier) for your wireless router in the on-screen keyboard. (The SSID is often the brandname of the router; see the documentation that came with your router for details.)



To use the on-screen keyboard, use the arrow buttons to highlight the desired character and then press **SELECT** to enter the character. Press **BACK** to delete a character. To save the

new name, highlight **Save** and press **SELECT**.



6. Select **WEP Enable** and press **RIGHT**. (If your network is not using WEP security, leave this setting at **Off** and press **Save**.)

**Important:** The deBoxx only supports the Static WEP protocol. It does not support the 802.1x + Dynamic WEP, 802.1x + Static WEP or WPA/WPA-PSK protocols.



**Note:** The following settings must match the security settings of your router.

7. Choose the Authentication type: **Open System** or **Shared Key**.
8. Choose the Encryption type: **64 Bit** or **128 Bit**.
9. Choose the Key Type: **ASCII** or **HEX**.
10. Choose a Key Index: **1/2/3/4**.
11. Select the bottom field **Key** and press **RIGHT**. The onscreen keyboard appears.
12. Type in the key and save.  
A **Please Wait ...** message appears and you are returned to the main menu.



13. To confirm that an IP address was assigned, select **Network** and press **SELECT**.  
The Netmask and Gateway address should match your network settings. The IP address should be in the same range. For example, if your computer's IP address is **192.168.001.032**, the IP address of the deBoxx may be **192.168.001.034** or **192.168.001.035**.

### **WIRELESS STATIC IP ADDRESS (MANUAL)**

Use this setting if your IP address is manually assigned to your computer. (See "Determining the type of IP network address" on page 26.)

The security settings you choose in the deBoxx menus have to match the security settings for your wireless router. Log in to your wireless router Web user interface to determine the correct authentication method and encryption key. Refer to your router's online help for more information.



Wireless networks use WEP (Wired Equivalent Privacy) and WPA (Wi-Fi Protected Access) security protocols to prevent unauthorized access. The deBoxx only supports the Static WEP protocol. It does not support the 802.1x + Dynamic WEP, 802.1x +Static WEP or WPA/WPA-PSK protocols.

1. Use **UP/DOWN** to highlight **Setup**, and then press **SELECT**.



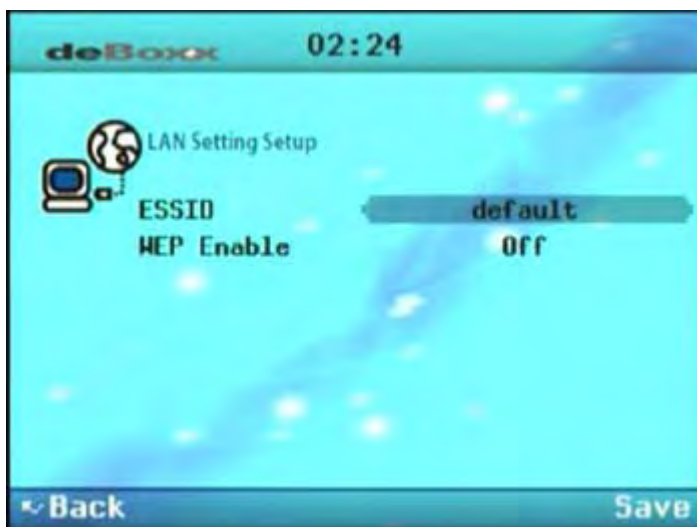
2. Use **UP/DOWN** to highlight **Network**, and then press **SELECT**.



3. The Network setting is highlighted. Use **RIGHT/LEFT** to choose **Wireless**.



4. Press **DOWN** to move to **Setting** and then press **RIGHT**.



5. With **ESSID** selected, press **RIGHT**. An on-screen keyboard appears. Type in the SSID (Service Set Identifier) for your wireless router in the on-screen keyboard. (The SSID is often the brandname of the router; see the documentation that came with your router for details.)



To use the on-screen keyboard use the arrow buttons to highlight the desired character and then press **SELECT** to enter the character. Press **BACK** to delete a character. To save the

new name, highlight **Save** and press **SELECT**.



6. Select **WEP Enable** and press **RIGHT**. (If you are not using WEP security, leave this setting at **Off** and press **Save**.)

**Important:** The deBoxx only supports the Static WEP protocol. It does not support the 802.1x + Dynamic WEP, 802.1x + Static WEP or WPA/WPA-PSK protocols.



7. Choose the Authentication type: **Open System** or **Shared Key**.
8. Choose the Encryption type: **64 Bit** or **128 Bit**.
9. Choose the Key Type: **ASCII** or **HEX**.
10. Choose a Key Index: **1/2/3/4**.
11. Select the bottom field **Key** and press **RIGHT**. The onscreen keyboard appears.
12. Type in the key and save.  
A **Please Wait ...** message appears and you are returned to the main menu.

13. Return to the Network menu and use **RIGHT/LEFT** to choose **Static IP**.



14. Leave the **ServerExplorer** setting at the default **Broadcast** and press **DOWN** to move to the IP field. The IP address should be different from other computers on your network, but in the same range. For example, if your computer's IP address is **192.168.001.032**, the IP address of the deBoxx must be **192.168.001.034** or **192.168.001.035**.
15. Use **VOL UP/DOWN** to change IP values. Use **RIGHT/LEFT** to move to the next digit. When you are finished, press **DOWN** to move to the **NetMask** field.
16. Enter the same Netmask address as your computer's. Then press **DOWN** to move to the **Gateway** field.
17. Enter the same Gateway address as your computer's.  
(The MAC field is read only. You cannot change these values.)
18. Press **SELECT** to confirm your settings.  
A **Please Wait ...** message appears and you are returned to the Setup menu.

## Testing your network connection

Refer to the following to test if the deBoxx can access media on your computer. (The deBoxx should be connected to your network and your TV.)

1. Turn the deBoxx on. The welcome splash screen appears. (If the splash screen does not appear, adjust the source setting on your TV.) The main menu appears.



2. If necessary, press the **VIDEO MODE** button repeatedly on the deBoxx remote control until the picture is clear. (Check the TV standard for your location.)
3. On your computer, click **Start -> All Programs** (Windows® 2000, **Programs**) -> **deBoxx PC Manager -> deBoxx PC Manager** to put the MOD server online.
4. On the main menu of the deBoxx, highlight **MOD** and press **SELECT**.



If you can see a computer icon as in the screen below, the deBoxx is able to access your net-



work. (In the example here, the MOD Server is installed and running on two computers.)



5. Press **SELECT** to view the shared folders on the computer.



If you have already shared media on your computer, you can select files for playback. See the next chapter “Operating the deBoxx” for more information.

# Operating the deBoxx

---

This chapter explains how to operate the deBoxx. This section covers the following topics:

- “Moving around menus and changing settings” on page 43
- “Streaming media from a network with MOD” on page 44
- “Playing back your media” on page 45
- “Watching movies” on page 46
- “Listening to music” on page 50
- “Viewing photos” on page 54
- “Using the deBoxx as a removable hard drive” on page 62
- “Copying files to and from a CompactFlash card” on page 62

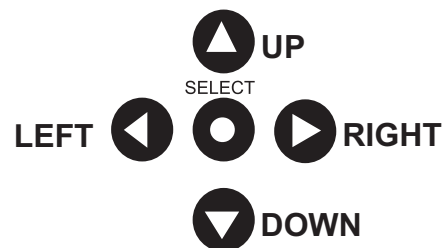
## Moving around menus and changing settings

When you turn on the deBoxx a welcome splash screen appears for a few seconds and then the OSD opens on the main menu.

Use the **SELECT** button to enter submenus and confirm settings. Use the **BACK** button to exit menus without changing settings. Press **MENU** at any time (except when media is playing) to return to the main menu.



Use the four arrow buttons on the remote control to move around menus in the OSD. The arrow buttons are referred to throughout this manual in bold capitals as **LEFT**, **RIGHT**, **UP**, and **DOWN**.



In some menus the volume buttons are used to change settings such as numerical values. The volume buttons are referred to in bold capitals as **VOL UP**, **VOL DOWN**, or **VOL UP/DOWN**.





## Streaming media from a network with MOD

Follow these steps to access files that you have shared on your computer. The deBoxx should be connected to a TV and your home network.

1. Turn on your network switch or router. Be sure the computer is on and the MOD server is online.
2. Turn the deBoxx on. The welcome splash screen appears. (If the splash screen does not appear, adjust the source setting on your TV.)



3. The main menu appears. If necessary, press the **VIDEO MODE** button repeatedly on the deBoxx remote control until the picture is clear. (Check the TV standard for your location.)



4. Use the arrow buttons to highlight the MOD icon, and press **SELECT**.

Any computers in your home that are running the deBoxx PC Manager are shown.

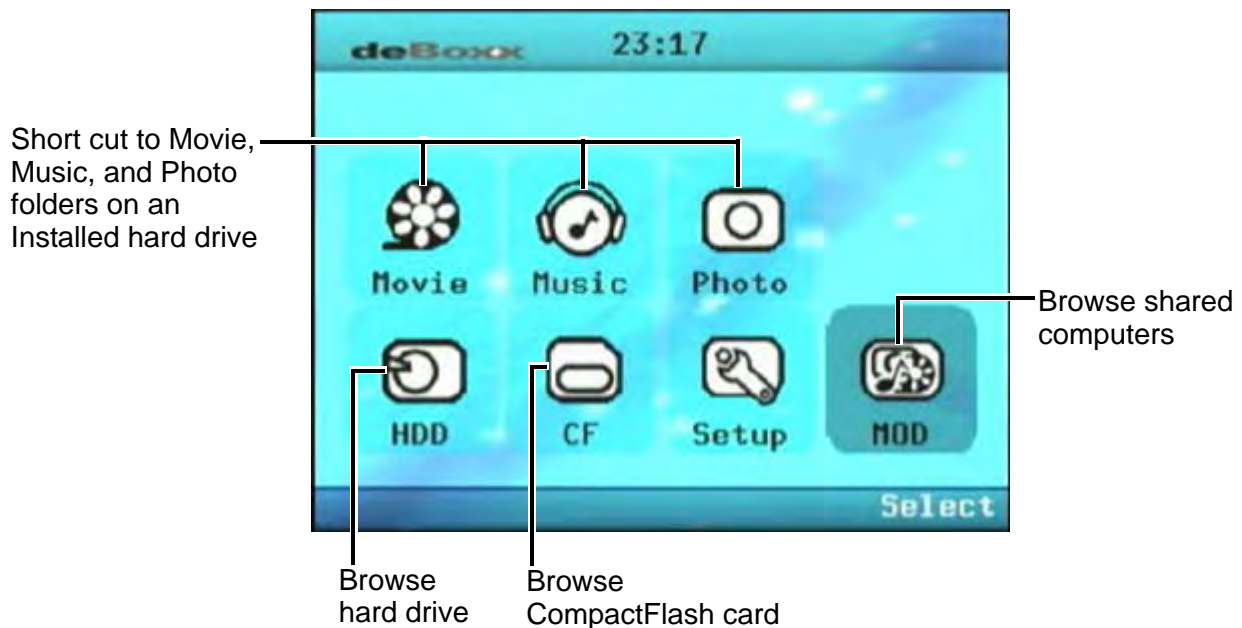


5. Use **UP/DOWN** to highlight the computer you want to access and press **SELECT**.
6. Use **UP/DOWN** to highlight one of the folders (Image, Movie, or Image) and press **SELECT**.



## Playing back your media

Whether the files you want to playback are on a hard drive installed in the deBoxx, on a CompactFlash card, or on any computer in your home, the way you use the remote control to playback files is the same.



The Movie, Music, and Photo icons are shortcuts to folders on an installed hard drive. If you have not installed a hard drive, those icons and the HDD icon are not accessible. Likewise, if you have not inserted a CompactFlash card, the CF icon is not accessible.

Use the Setup menu to change global settings for items such as sound, display brightness, and subtitles. See "Exploring the OSD Menus" on page 69.