

VIJE T480K

USER MANUAL



CONTENTS

ENGLISH

Features	2
Specification	2
System Environment	2
Package includes	3
Driver and software installation	3
Hardware Installation - Auto Installation	5
How to Use VIJE Viewer	8

NOTE: THE MANUFACTURER IS NOT RESPONSIBLE FOR ANY RADIO OR TV INTERFERENCE CAUSED BY UNAUTHORIZED MODIFICATIONS TO THIS EQUIPMENT. SUCH MODIFICATIONS COULD VOID THE USER'S AUTHORITY TO OPERATE THE EQUIPMENT.

NOTE: This equipment has been tested and found to comply with the limits for a class B digital device, pursuant to part 15 of the FCC Rules. These limits are designed to provide reasonable protection against harmful interference in a residential installation. This equipment generates, uses and can radiate radio frequency energy and, if not installed and used in accordance with the instructions, may cause harmful interference to radio communication.

However, there is no guarantee that interference will not occur in a particular installation. If this equipment does cause harmful interference to radio or television reception, which can be determined by turning the equipment off and on, the user is encouraged to try to correct the interference by one or more of the following measures:

- Reorient or relocate the receiving antenna.
- Increase the separation between the equipment and receiver.
- Connect the equipment into an outlet on a circuit different from that to which the receiver is connected.
- Consult the dealer or an experienced radio/TV technician for help.

Thanks for purchasing our VIJE T480K Web Camera.

MAKE SURE to connect the camera with your system **AFTER** driver installation.
(Without driver installation, your system may **NOT** detect the camera properly.)

❖ Features

- 800x600 resolution (Interpolation)
- Digital Zoom
- Still Image Capturing
- Movie Capturing

❖ Specification

- Model VIJE T480K
- Interface USB 1.1 / 2.0
- Sensor 1/4"CMOS
480K (Interpolation)
- Resolution 800 x 600, 640 x 480, 352 x 288, 320 x 240
176 x 144, 160 x 120
- Color 24bit True color
- Frame 15fps (MAX) : 640 x 480 ~
30fps (MAX) : 352 x 288 / 320 x 240 ~
- Focus length 1cm ~ ∞
- WB AUTO
- Exposure AUTO
- Weight 65g

❖ System Environment

- Pentium III 700MHz or higher
- Graphic card with 16MB or higher memory
- RAM 128MB or higher
- CD-ROM drive
- Windows 2000/XP

※ NOTICE : For the stable running of VIJE T480K, it is recommended to connect VIJE T480K to the USB port on the rear side of the system.

※ NOTICE : In case of systems with insufficient power for USB port, VIJE T480K may not work properly. In this case, additional USB2.0 hub with external power is needed.

❖ Package includes

- VIJE T480K Camera
- Installation CD
- Manual

※ The latest driver and application programs are available for download from [www.savitmico.co.kr]. If you lost installation CD or your system is not equipped with CD-ROM, access above URL for download.

❖ Driver and software installation

- ※ NOTICE : The driver and software installation CD is designed based on Windows XP standard.
- ※ NOTICE : Before installation, PLEASE MAKE SURE you have disconnected the camera with the PC.
- ※ NOTICE : Once driver and software installation is done, connect VIJE T480K to the USB port in the rear side of your system.

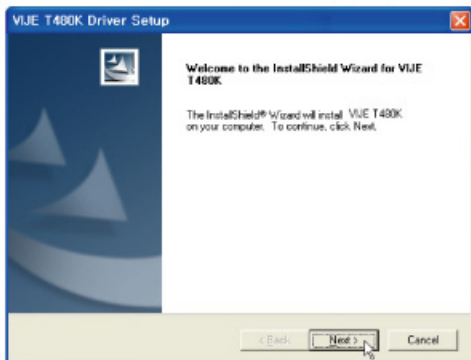
1. Insert Installation CD into the CD-ROM and the disk will automatically run setup. If below setup window does not appear, go to Search and double click on SMInstall.exe file in to run.



From the initial setup window above, click on 「Install」 to start the installation process.

2. Install VIJE Viewer.

3. 「VIJE T480K Driver *Setup」 window pops up.



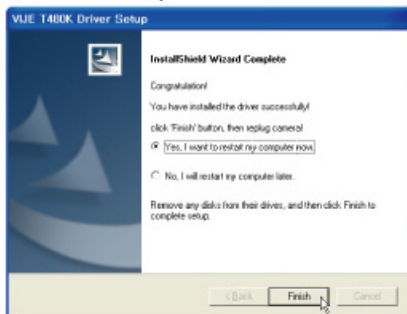
Click 「Next」 to proceed.

4. A warning window with the message 「Software Installation」 appears.



Click 「Continue Anyway」 to proceed.

5. Installation is complete.



Click on 「Finish」 to terminate the installation. Restart computer.

» Hardware installation - Auto Installation

1. If you have completed the software installation and restarted your computer, connect VIJE T480K to the USB port in the rear side of your PC.

※ NOTICE : For the stable running of VIJE T480K, it is recommended to connect VIJE T480K to the USB port on the rear side of the system.

2. Once VIJE T480K is properly connected, 「Found New Hardware Wizard」 window will appear.



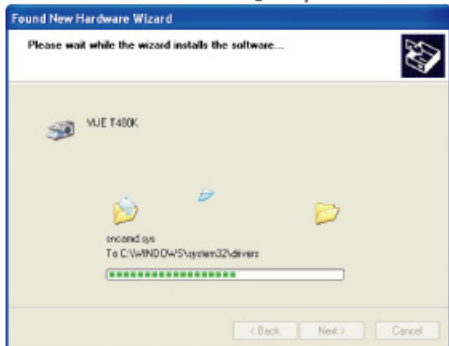
Select 「Install the software automatically (Recommended)」 and click on 「Next」 to proceed.

3. 「Hardware Installation」 window will show up.

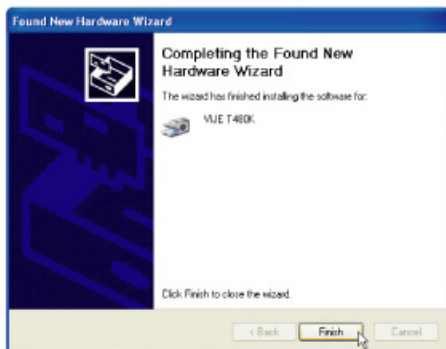


Click 「Continue Anyway」 to proceed.

4. 「Found New Hardware Wizard」 will proceed.

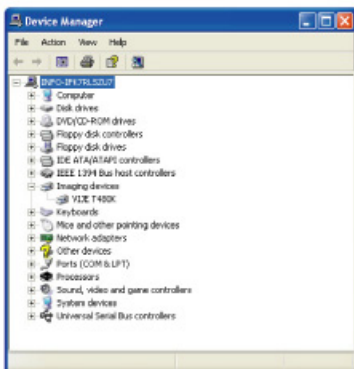


5. Installation is complete.



Click on 「Finish」 to terminate the hardware installation.

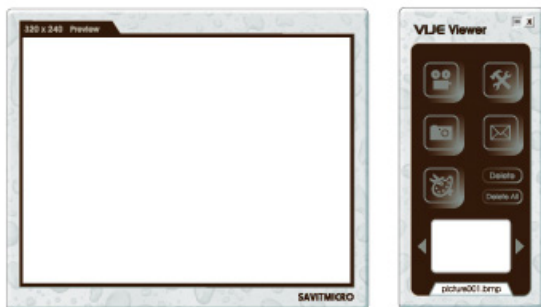
6. If every installation procedure has been implemented successfully, the 「Device Manager」 now will show 「VJE T480K」 under the 「Imaging Device」 category.



「Device Manager」 can be found in your 「Control panel」 - 「System」 category, which you can double click it to enter and once you are in then click on the 「Hardware」 tab, or alternatively use the short cut key combination of 「Windows」 Key+ 「Break」 Key.

» How to use VIJE Viewer

- Execute 「VIJE Viewer」 from desktop or Program Files' SavitMicro folder.
- VIJE Viewer's screen is as the follows.



Video Recording

Run video recording program. Recording video are normally recorded with non-compression method and the higher the resolution the more saving capacity it provides.



Snapshot

It can capture still images on the screen and save them.



Image Edit

You can edit the captured image by paging 「Paint」 Windows basic application.



E-Mail

You can send a captured image via an email by paging the email software you are using on your system.



SETUP

You can easily change or a adjust the camera's resolution and other settings.

VIJE Viewer's environment setup components are as follows.

- ❑ **Resolution** : You can change the video resolution and frame rate setup.
- ❑ **Effects** : Provides brightness, color and exposure adjustment, and also many visual effects.
- ❑ **Audio setup** : Provides the audio setup.
- ❑ **Audio type** : Provides the audio type setup.
- ❑ **Save as** : When video recording or image capturing, it suggests the save locations.
- ❑ **Device setup** : It configures the video input source properties. If the webcam views something else other than what it is supposed to view. (typically with a TV channel receiver), be sure to select the camera you intend to use on the Device setup. If the problem persists it should mean that the corresponding device's such as a TV channel receiver has the superiority over the camera. Please 'Delete' the device or convert it to 'Disable' and then try to do the same steps.