



## FCC TEST REPORT

**REPORT NO.:** FCC0706008

**MODEL NO.:** MD8356

**RECEIVED:** Jun 04, 2007

**TESTED:** Jun 04, 2007 to Jun 14, 2007

**APPLICANT:** Nange Electronics Manufacturing (Zhongshan) Co., Ltd

**ADDRESS:** Dong Fu Road, Dong Feng Town, Zhong Shan City,  
Guangdong, China

**ISSUED BY:** SHENZHEN SETEK TECHNOLOGY CO., LTD.

**LAB LOCATION:** 2/F, A3 Bldg, East Industry Zone, Overseas Chinese Town,  
Shenzhen, China

This test report consists of 24 pages in total, it may be duplicated completely for legal use with the approval of the applicant, It should not be reproduced except in full, without the written approval of our laboratory, The test results in the report only apply to the tested sample.

**SHENZHEN SETEK TECHNOLOGY CO., LTD.**

**Our website:** [www.setek.com.cn](http://www.setek.com.cn)

**TEL:** 86-755-26966362

**E-mail:** Service@setek.com.cn

**FAX:** 86-755-26966270

Prepared for : Nange Electronics Manufacturing (Zhongshan) Co., Ltd

Address : Dong Fu Road, Dong Feng Town, Zhong Shan City,  
Guangdong, China

Product : Wireless optical mouse

Model No. : MD8356

Trademark : N/A


Test Standard : FCC Part 15 Paragraph 15.207 Paragraph 15.209 and Paragraph 15.227

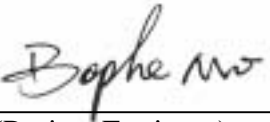
Prepared by : SHENZHEN SETEK TECHNOLOGY CO., LTD.

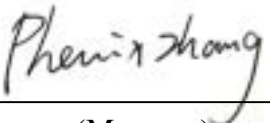
Address : 2/F,A3 Bldg,East Industry Zone,Overseas Chinese Town,  
Shenzhen,China

FCC Registration Number: 966959

Tel: (86-755) 26966362 Fax:(86-755) 26966270

Prepared by :   
(Engineer)

Reviewer by :   
(Project Engineer)

Approved by :   
(Manager)

Report Number : FCC0706008

Date of Test : Jun 04, 2007 to Jun 14, 2007

Date of Report : Jun 14, 2007

The device described above is tested by SHENZHEN SETEK TECHNOLOGY CO., LTD. to determine the maximum emission levels emanating from the device and the severe levels of the device can endure and its performance criterion. This report applies to above tested sample only and shall not be reproduced in part without written approval of SHENZHEN SETEK TECHNOLOGY CO., LTD.

## TABLE OF CONTENTS

Description	Page
The Report Description	
<b>1. GENERAL INFORMATION .....</b>	<b>4</b>
1.1. Description of Device (EUT) .....	4
1.2. Description of Support Device .....	5
1.3. Summary of test results .....	5
1.4. Test Facility .....	6
1.5. Measurement Uncertainty.....	6
<b>2. POWER LINE CONDUCTED MEASUREMENT .....</b>	<b>7</b>
2.1. Test Equipment.....	7
2.2. Block Diagram of Test Setup .....	7
2.3. Power Line Conducted Emission Measurement Limits(Class B) .....	7
2.4. Configuration of EUT on Measurement.....	8
2.5. Operating Condition of EUT .....	8
2.6. Test Procedure .....	8
2.7. Power Line Conducted Emission Measurement Results .....	9
<b>3. RADIATED EMISSION MEASUREMENT .....</b>	<b>10</b>
3.1. Test Equipment.....	10
3.2. Block Diagram of Test Setup .....	11
3.3. Radiated Emission Limit .....	12
3.4. EUT Configuration on Measurement .....	12
3.5. Operating Condition of EUT .....	12
3.6. Test Procedure .....	13
3.7. Radiated Emission Measurement Results.....	14
<b>4. BAND EDGE.....</b>	<b>17</b>
4.1. Measurement Procedure .....	17
4.2. Test SETUP (Block Diagram of Configuration) .....	17
4.3. Band Edge Limit.....	17
4.4. Band Edge Test Result .....	17
<b>5. FCC ID LABEL .....</b>	<b>19</b>
<b>6. PHOTOGRAPH.....</b>	<b>20</b>
6.1. Photo of Radiated Measurement.....	20

APPENDIX I (Photos of EUT) (3 Pages)

# 1. GENERAL INFORMATION

## 1.1. Description of Device (EUT)

EUT : Wireless optical mouse

Model Number : MD8356

Antenna Designation : A permanent fixed antenna, which is built-in, designed as an indispensable part of the EUT.

Power Supply : 2.4V DC (2 pcs AAA batteries)

Operation Frequency : 27.045MHz

Applicant : Nange Electronics Manufacturing (Zhongshan) Co., Ltd

Address : Dong Fu Road, Dong Feng Town, Zhong Shan City, Guangdong, China

Manufacturer : Nange Electronics Manufacturing (Zhongshan) Co., Ltd

Address : Dong Fu Road, Dong Feng Town, Zhong Shan City, Guangdong, China

Received : Jun 04, 2007

Date of Test : Jun 04, 2007 to Jun 14, 2007

## 1.2.Description of Support Device

PC : Manufacturer: DELL  
M/N: E157FPc  
S/N: 53SM12X  
CCC,FCC,VCCI,GS,S,CE

Monitor : Manufacturer: SAMSUNG  
M/N: 710MP [R]S  
S/N: MH17HVV500468F  
CCC,SA,UL

Mouse : Manufacturer: DELL  
M/N: M056UOA  
S/N: F1101WOS  
CE, VCCI,FCC,GS,UL

Keyboard : Manufacturer: DELL  
M/N: SK-8135  
S/N: CN-0DJ340-71616683-01U6  
VCCI,CE, FCC

Printer : Manufacturer: SAMSUNG  
M/N: ML-1610  
S/N:BKAYB04125  
CCC,CE,UL

## 1.3.Summary of test results

FCC Rules	Description Of Test	Result
Paragraph 15.207	Conducted Emission	N/A
Paragraph 15.227	Radiated Emission	Compliant
Paragraph 15.227	26 dB Bandwidth	Compliant

#### 1.4. Test Facility

The test facility is recognized, certified, or accredited by the following organizations:

FCC – Registration No.: 966959

SHENZHEN SETEK TECHNOLOGY CO., LTD, the EMC Laboratory has been registered and fully described in a report filed with the (FCC) Federal Communications Commission.

#### 1.5. Measurement Uncertainty

Radiation Uncertainty :  $U_r = \pm 3.84 \text{ dB}$

Conduction Uncertainty :  $U_c = \pm 2.72 \text{ dB}$

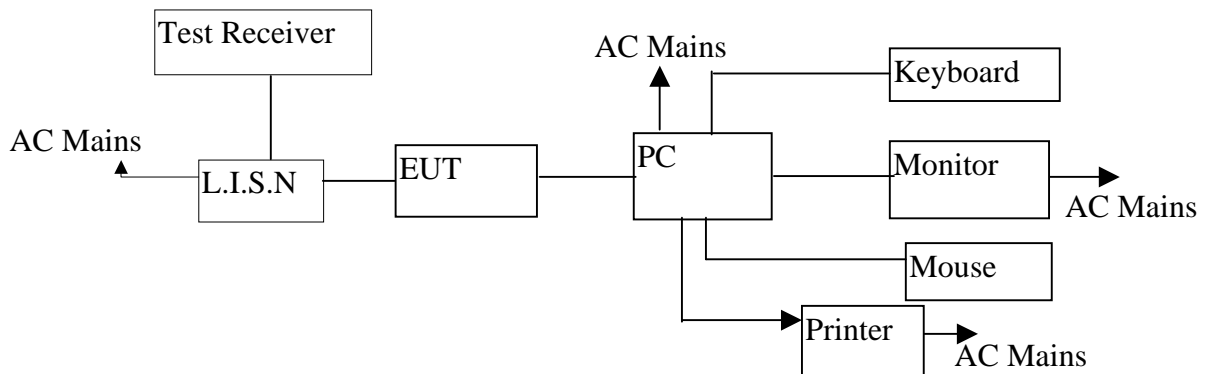
## 2. POWER LINE CONDUCTED MEASUREMENT

### 2.1. Test Equipment

The following test equipments are used during the power line conducted measurement:

Item	Equipment	Manufacturer	Model No.	Serial No.	Last Cal.	Cal. Interval
1.	Test Receiver	Rohde & Schwarz	ESCS30	8289851018	May 29,2007	1 Year
2.	L.I.S.N.	Rohde & Schwarz	ESH2-Z5	834549/005	May 29,2007	1 Year
3.	Pulse Limiter	Rohde & Schwarz	ESH3-Z2	100006	May 29,2007	1 Year
4.	RF Cable	FUJIKURA	RG-55/U	LISN Cable	May 29,2007	1 Year

### 2.2. Block Diagram of Test Setup



### 2.3. Power Line Conducted Emission Measurement Limits(Class B)

Frequency MHz	Limits dB(μV)	
	Quasi-peak Level	Average Level
0.15 ~ 0.50	66 ~ 56*	56 ~ 46*
0.50 ~ 5.00	56	46
5.00 ~ 30.00	60	50

Notes: 1. \*Decreasing linearly with logarithm of frequency.

2. The lower limit shall apply at the transition frequencies.

## 2.4.Configuration of EUT on Measurement

The following equipments are installed on Power Line Conducted Emission Measurement to meet the commission requirement and operating regulations in a manner, which tends to maximize its emission characteristics in a normal application.

EUT	:	Wireless optical mouse
Model Number	:	MD8356

## 2.5.Operating Condition of EUT

2.5.1.Setup the EUT and simulator as shown as Section 2.2.

2.5.2.Turn on the power of all equipment.

2.5.3.Let the EUT work in test mode (Normal) and measure it.

## 2.6.Test Procedure

The EUT system is connected to the power mains through a line impedance stabilization network (L.I.S.N.). This provides 50ohm-coupling impedance for the EUT system. Please refer the block diagram of the test setup and photographs. Both sides of AC line are checked to find out the maximum conducted emission. In order to find the maximum emission levels, the relative positions of equipment and all of the interface cables shall be changed according to ANSI C63.4-2003 on Conducted Emission Measurement.

The bandwidth of test receiver (R & S ESCS30) is set at 9KHz.

The frequency range from 150KHz to 30 MHz is investigated.

## 2.7.Power Line Conducted Emission Measurement Results

**N/A**

Note: EUT powered by 2 pcs AAA batteries, this test item not applicant

### 3. RADIATED EMISSION MEASUREMENT

#### 3.1. Test Equipment

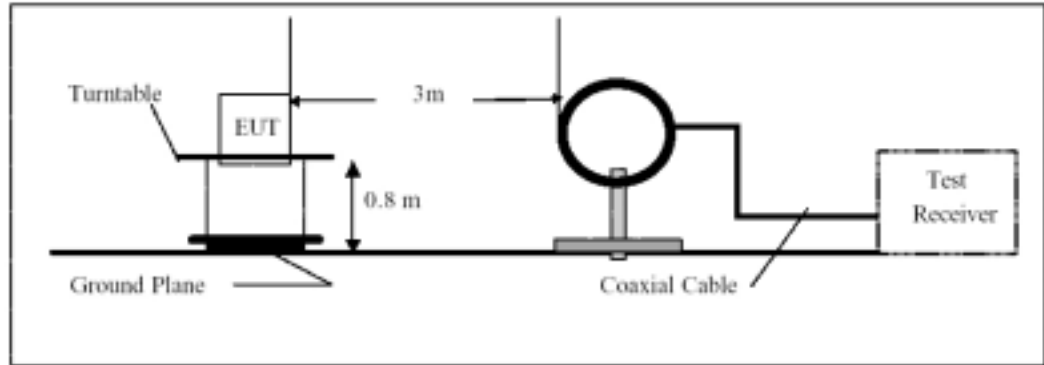
The following test equipments are used during the radiated emission measurement:

##### 3.1.1. For Anechoic Chamber

Item	Equipment	Manufacturer	Model No.	Serial No.	Last Cal.	Cal. Interval
1.	Spectrum Analyzer	ANRITSU	MS2661C	6200140915	May 29,2007	1 Year
2.	Test Receiver	Rohde & Schwarz	ESCS30	828985/018	May 29,2007	1 Year
3.	Bilog Antenna	Schwarzbeck	VULB9163	142	May 29,2007	1 Year
4.	Loop Antenna	EMCO	6502	00042960	Dec 11,2006	1 Year
5.	50 Coaxial Switch	Anritsu Corp	MP59B	6100237248	May 29,2007	1 Year
6.	Cable	Schwarzbeck	AK9513(1m)	CR RX2	May 29,2007	1 Year
7.	Cable	Schwarzbeck	AK9513(10m)	AC RX1	May 29,2007	1 Year
8.	Cable	Rosenberger	N/A(6m)	CR RX1	May 29,2007	1 Year
9.	Cable	Rosenberger	N/A(10m)	FP2RX2	May 29,2007	1 Year
9.	DC Power Filter	MPE	23872C	N/A	May 29,2007	1 Year
10.	Single Phase Power Line Filter	MPE	23332C	N/A	May 29,2007	1 Year
11.	3 Phase Power Line Filter	MPE	23333C	N/A	May 29,2007	1 Year
12.	Signal Generator	HP	8648A	3625U00573	May 29,2007	1 Year

### 3.2.Block Diagram of Test Setup

#### A: Radiated Emission Test Setup, Frequency Below 30MHz

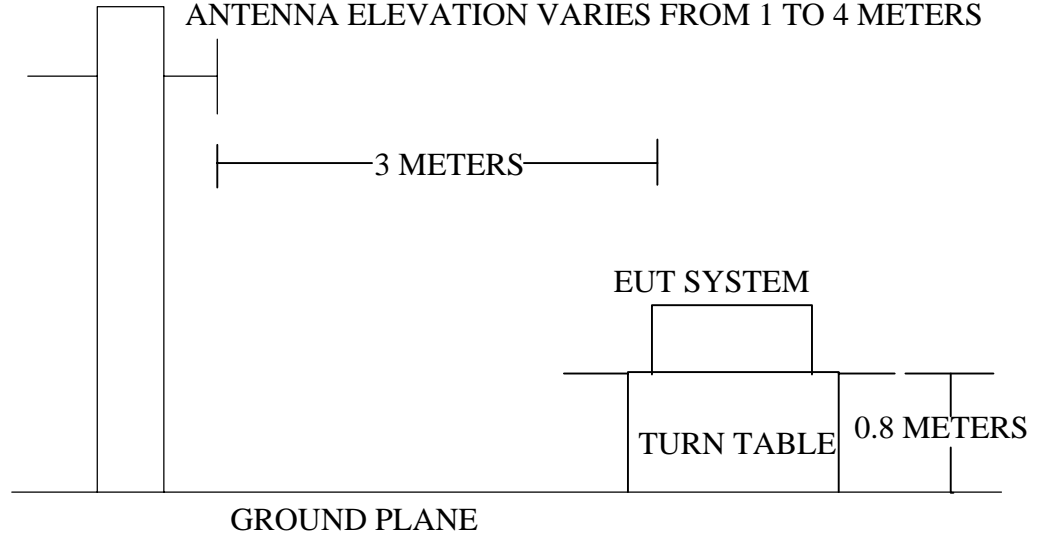


(EUT: Wireless optical mouse)

#### B: Radiated Emission Test Setup, Frequency 30M to 1000MHz

ANTENNA TOWER

ANTENNA ELEVATION VARIES FROM 1 TO 4 METERS



(EUT: Wireless optical mouse)

### 3.3.Radiated Emission Limit

#### A: FCC Part 15 Subpart C Paragraph 15.227 Limit

Fundamental Frequency (MHz)	Field Strength of Fundamental (3m)	
	uV/m	dBuV/m
26.96-27.28	10000	80

Note: 1. RF Field Strength (dBuV) = 20 log RF Voltage (uV)

2.Distance refers to the distance in meters between the measuring instrument antenna and the closed point of any part of the device or system.

3. The emission limit in this paragraph is based on measurement instrumentation employing an average detector.

#### B: Frequencies in restricted band are complied to limit on Paragraph 15.209

FREQUENCY MHz	DISTANCE Meters	FIELD STRENGTHS LIMIT	
		μV/m	dB(μV)/m
1.705 ~ 30	30	30	69.54
30 ~ 88	3	100	40.0
88 ~ 216	3	150	43.5
216 ~ 960	3	200	46.0
Above960	3	500	54.0

Remark : (1) Emission level (dB)μV = 20 log Emission level μV/m

(2) The smaller limit shall apply at the cross point between two frequency bands.

(3) Distance is the distance in meters between the measuring instrument, antenna and the closest point of any part of the device or system.

As shown in 15.35(b),for frequencies above 1000MHz,the field strength limits are based on average detector,however,the peak field strength of any emission shall not exceed the maximum permitted average limits,specified above by more than 20dB under any condition of modulation.

### 3.4.EUT Configuration on Measurement

The following equipment are installed on Radiated Emission Measurement to meet the commission requirements and operating regulations in a manner which tends to maximize its emission characteristics in normal application.

Wireless optical mouse (EUT)

Model Number : MD8356  
Serial Number : N/A

### 3.5.Operating Condition of EUT

1. Setup the EUT as shown in Section 3.2.
2. Let the EUT work in test mode (Normal) and measure it.

### 3.6. Test Procedure

EUT and its simulators are placed on a turntable, which is 0.8 meter high above ground. The turntable can rotate 360 degrees to determine the position of the maximum emission level. EUT is set 3.0 meters away from the receiving antenna, which is mounted on an antenna tower. The antenna can be moved up and down between 1.0 meter and 4 meters to find out the maximum emission level. Both horizontal and vertical polarization of the antenna is set on measurement. In order to find the maximum emission levels, all of the interface cables must be manipulated according to ANSI C63.4-2003 on radiated emission measurement.

The RBW of the EMI test receiver (R&S ESCS30) is set at 120KHz between 30MHz and 1000MHz, and the RBW is 9KHz between 0.15MHz and 30MHz.

### 3.7.Radiated Emission Measurement Results

**PASS**

#### A. Fundamental Radiated Emission Data

**Test Item:** Fundamental Radiated Emission Data

Test Voltage: 2.4V DC BATTERY

Test Mode: ON TX

Temperature: 24°C

Humidity: 61%RH

Test Result: PASS

Frequency (MHz)	Antenna Polarization	Emission Level (dBuV/m)	Limit (dBuV/m)	Margin (dB)
27.045	Horizontal	53.18	80	26.82
27.045	Vertical	52.51	80	27.49

Note: (1) All Reading are Peak Value.

(2) Emission Level = Reading Level + Probe Factor + Cable Loss.

(3) The average measurement was not performed when the peak measured data under the limit of average detection.

#### B. General Radiated Emission Data

Please refer to following diagram

Note: No further spurious emissions found between 30 MHz and lowest internal generated or used frequency.

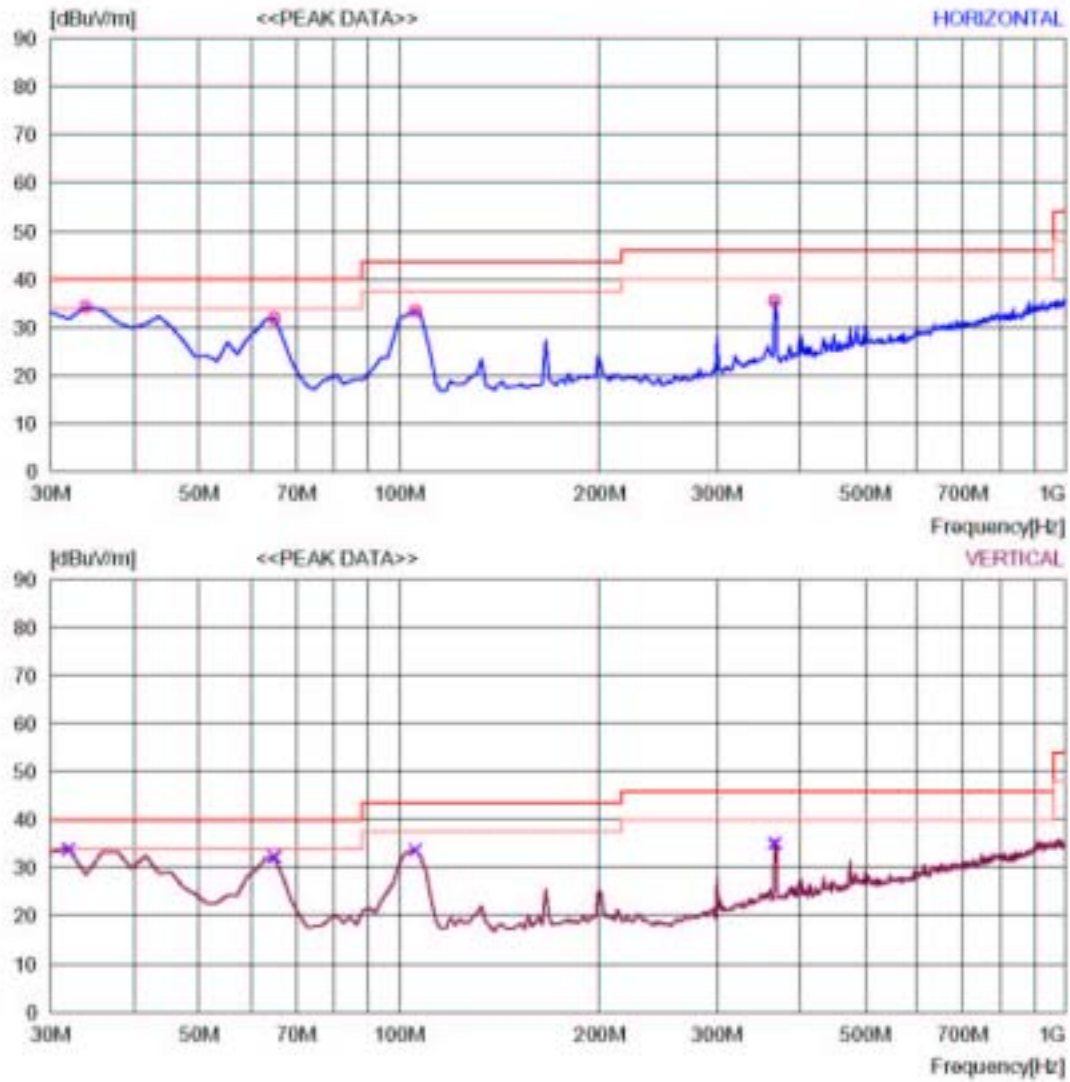
2007-06-07 18:31:10

## RADIATED EMISSION

Date : 2007-06-07 18:31:07

Trade Name	:	Nange	Document No.	:	
Model Name	:	Wireless optical mouse(MD8356)	Power Supply	:	DC 2.4V
Serial No.	:		Temp/Humi	:	24/61RH%
Test Condition	:	ON TX	Operator	:	Eliy zhang

Memo :

LIMIT : FCC Part15 Class B(3m)/USA  
MARGIN: 6 dB

2007-06-07 18:31:10

**RADIATED EMISSION**

Date : 2007-06-07 18:31:07

Trade Name	:	Nango	Document No.	:	
Model Name	:	Wireless optical mouse(MD8356)	Power Supply	:	DC 2.4V
Serial No.	:		Temp/Humi	:	24/61RH%
Test Condition	:	ON TX	Operator	:	Ely zhang

Memo :

LIMIT : FCC Part15 Class B(3m)/USA  
MARGIN: 6 dB

No.	FREQ [MHz]	READING PEAK [dBuV]	ANT FACTOR [dB]	LOSS [dB]	GAIN [dB]	RESULT [dBuV/m]	LIMIT [dBuV/m]	MARGIN [dB]	ANTENNA [cm]	TABLE [DEG]
— Horizontal —										
1	33.888	47.5	11.6	6.9	31.7	34.3	40	5.7	100	327
2	64.990	45.9	10.5	7.2	31.7	31.9	40	8.1	100	200
3	105.812	48.4	9.1	7.5	31.6	33.4	43.5	10.1	100	245
4	366.292	42.0	15.9	8.9	31.3	35.5	46	10.5	100	306
— Vertical —										
5	31.944	46.7	12.0	6.9	31.7	33.9	40	6.1	100	263
6	64.990	46.3	10.5	7.2	31.7	32.3	40	7.7	100	222
7	105.812	48.7	9.1	7.5	31.6	33.7	43.5	9.8	100	247
8	366.292	41.6	15.9	8.9	31.3	35.1	46	10.9	100	300

## 4. BAND EDGE

### 4.1.Measu rement Procedure

1. The EUT was placed on a turn table which is 0.8 m above ground plane.
2. Set EUT as normal operation
3. Set SPA Center Frequency = fundamental frequency, RBW, VBW= 3 KHz, Span =32 KHz.
4. Set SPA Max hold. Mark peak, - 26dB.

### 4.2.Test SETUP (Block Diagram of Configuration)

Same as 3.2 Radiated Emission Measurement.

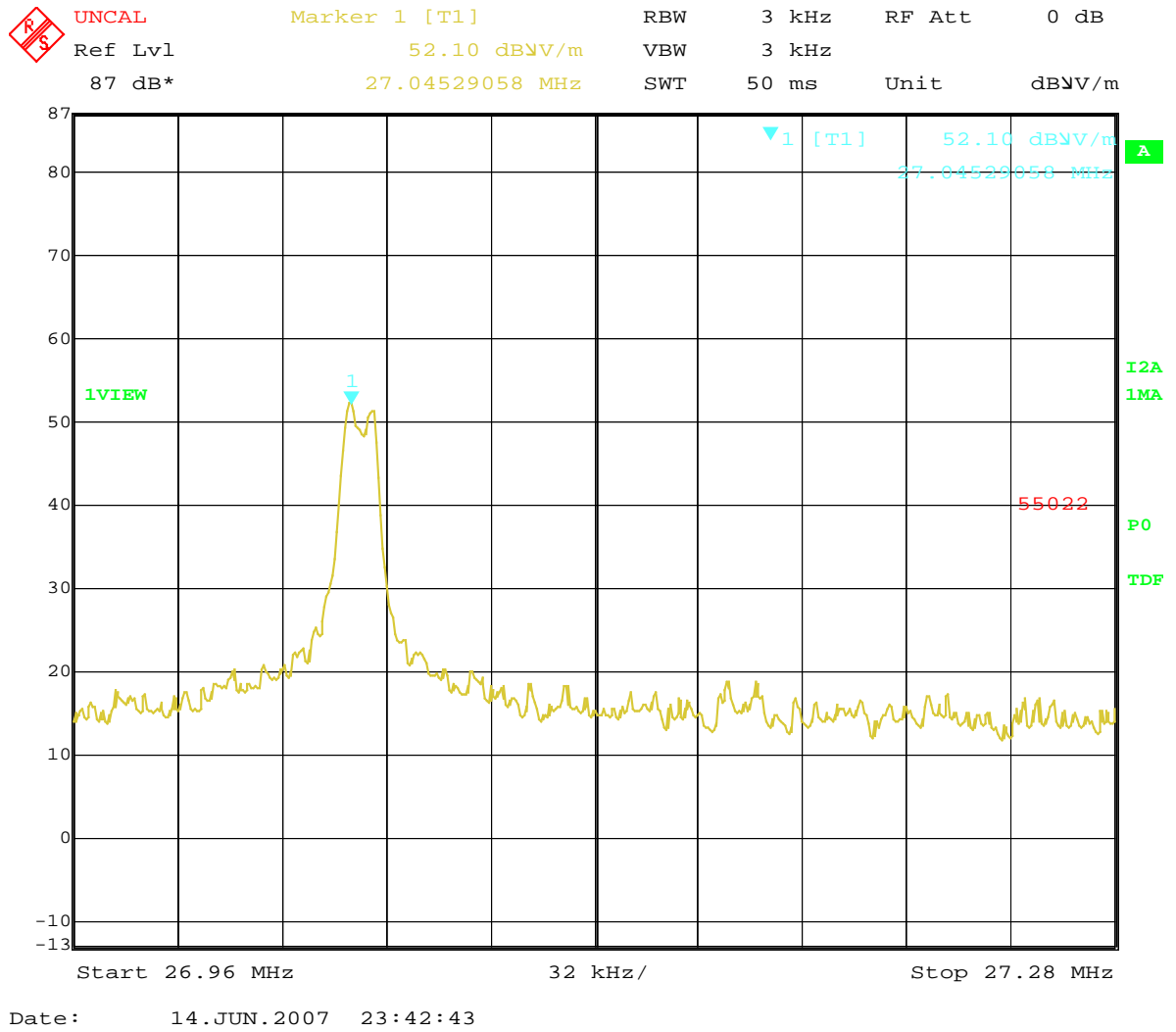
### 4.3.Band Edge Limit

The field strength of any emissions which appear outside of this band shall not exceed the general radiated emission limits in Section 15.209.

### 4.4.Band Edge Test Result

<b>Test Item:</b>	<b>Fundamental Radiated Emission Data</b>
Test Voltage:	2.4V DC BATTERY
Test Mode:	ON TX
Temperature:	24°C
Humidity:	61%RH
Test Result:	PASS

Refer to attached data chart.

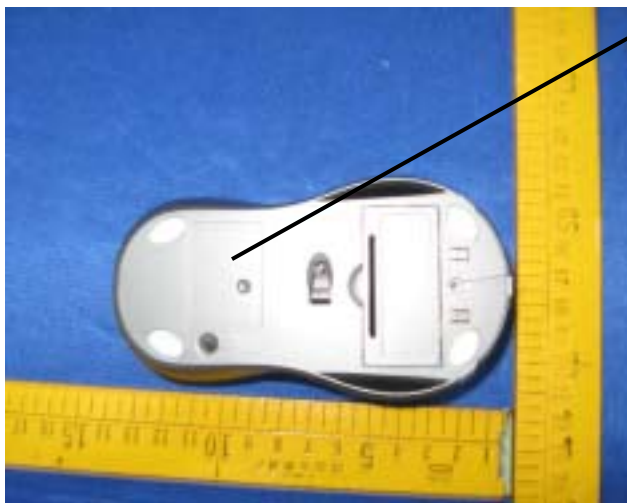


## 5. FCC ID LABEL

This device complies with Part 15 of the FCC Rules. Operation is subject to the following two conditions:(1)this device may not cause harmful interference,and (2) this device must accept any interference received, including interference that may cause undesired operation.

The Label must not be a stick-on paper. The Label on these products must be permanently affixed to the product and readily visible at the time of purchase and must last the expected lifetime of the equipment not be readily detachable.

**Mark Location:**



**FCC ID Label Location**

## 6. PHOTOGRAPH

### 6.1.Photo of Radiated Measurement



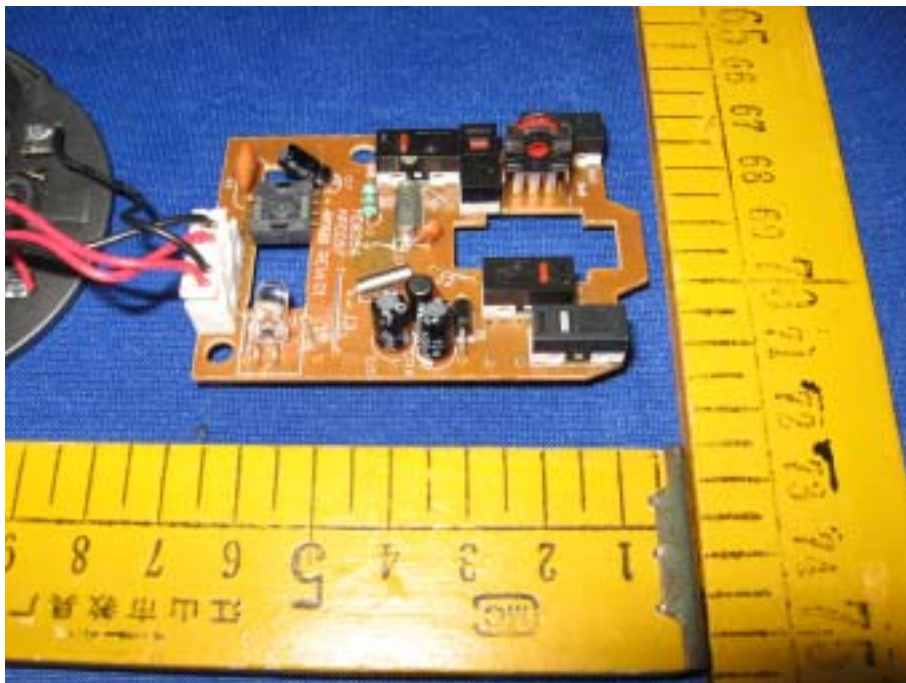
# APPENDIX I

## (Photos of EUT)

Outside View



Interior View





**THE END**