



NV-100

user manual

Contents

Before using NexView

| | |
|-----------------------------------|---|
| 1. Caution | 3 |
| 2. Components | 4 |
| 3. NexView at a glance..... | 5 |
| 3-1. Player | 6 |
| 3-2. Cradle | 7 |
| 4. Charging the Battery | 8 |
| 4-1. With the Power Adaptor | 8 |
| 4-2. With the Cradle | 8 |

Using NexView

| | |
|---|----|
| 1. Main Menu | 9 |
| 2. GPS Navigation | 10 |
| 3. Audio Player | 11 |
| 4. FM Radio | 15 |
| 5. Video Player | 18 |
| 6. Photo Album..... | 23 |
| 7. Text Viewer | 27 |
| 8. File Manager | 29 |
| 9. Settings | 31 |
| 9-1. Adjusting the Touch Point | 31 |
| 9-2. TV-OUT | 32 |
| 9-3. Power Management | 32 |
| 9-4. Volume & Sound | 33 |
| 9-5. Firmware Update | 33 |
| 9-6. Selecting Language | 36 |
| 9-7. Main Menu Setup | 36 |
| 9-8. Viewing the System Information | 40 |
| 10. Using the Multitasking Function | 41 |

Connecting NexView to other devices

| | |
|---|----|
| 1. Connecting the Player to the Cradle | 42 |
| 2. Connecting the Player to a Computer | 43 |
| 3. Connecting the Player to a TV..... | 45 |
| 4. Connecting the Player with another mass storage device | 46 |

Others

| | |
|---------------------------------|----|
| 1. General Specifications | 47 |
| 2. Contact Information | 49 |

Information in this manual is subject to change without notice.

1. Caution

- ❗ The Power Adaptor in the package is for NexView only. Do not use it to charge other devices.
- ❗ Do not expose NexView to moist or dusty place.
- ❗ Do not expose NexView to a magnetic field.
- ❗ Make sure NexView is never dropped or physically struck.
- ❗ Do not use volatile matters to clean NexView.
- ❗ Do not disassemble, repair or attempt to modify NexView without professional help. Unauthorized disassembly, repair or modification may render the warranty void.
- ❗ The "**System**" and "**Navigation**" folders in NexView include important system operating files, do not modify or delete these folders. You can recover NexView's system by downloading and installing recovery files from our website www.sciontech.co.kr when above folders are modified or deleted.

2. Components



NexView



Cradle



Suction Cup



Earphone



Power Adaptor



USB Cable



USB Host
Cable



A/V Cable



Pouch



Stylus Pen



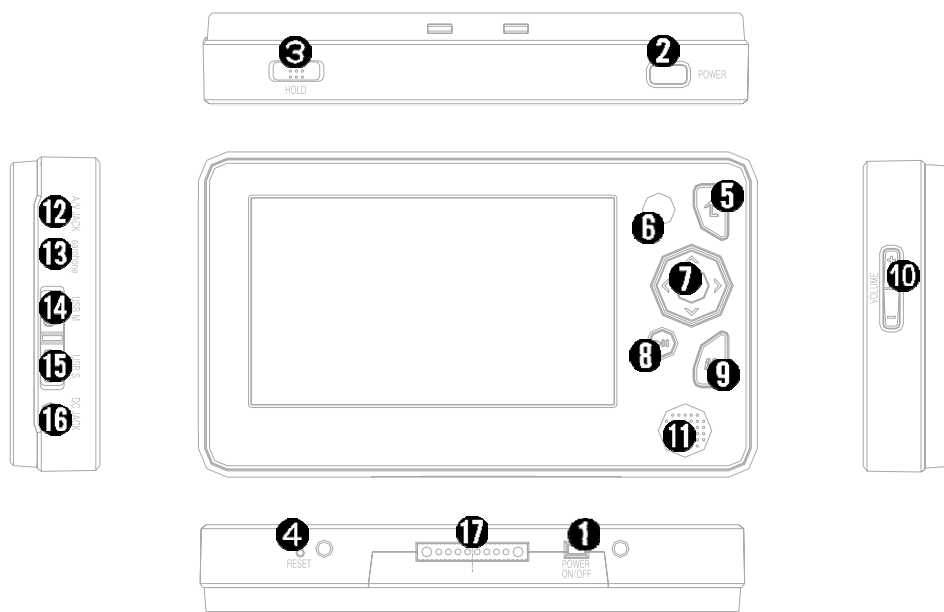
Hand Strap



User Manual

3. NexView at a glance

3-1. Player



- ❶ **Power Switch:** Turn off the Player by using the this switch when you will not use NexView for a long time.
- ❷ **Sleep Button:**
 - A. If you press this button shortly, the brightness of screen will be changed or the LCD turned on or off.
 - B. If you press and hold this button, NexView will fall down to or awake from the **SLEEP MODE**.

☀ SLEEP MODE

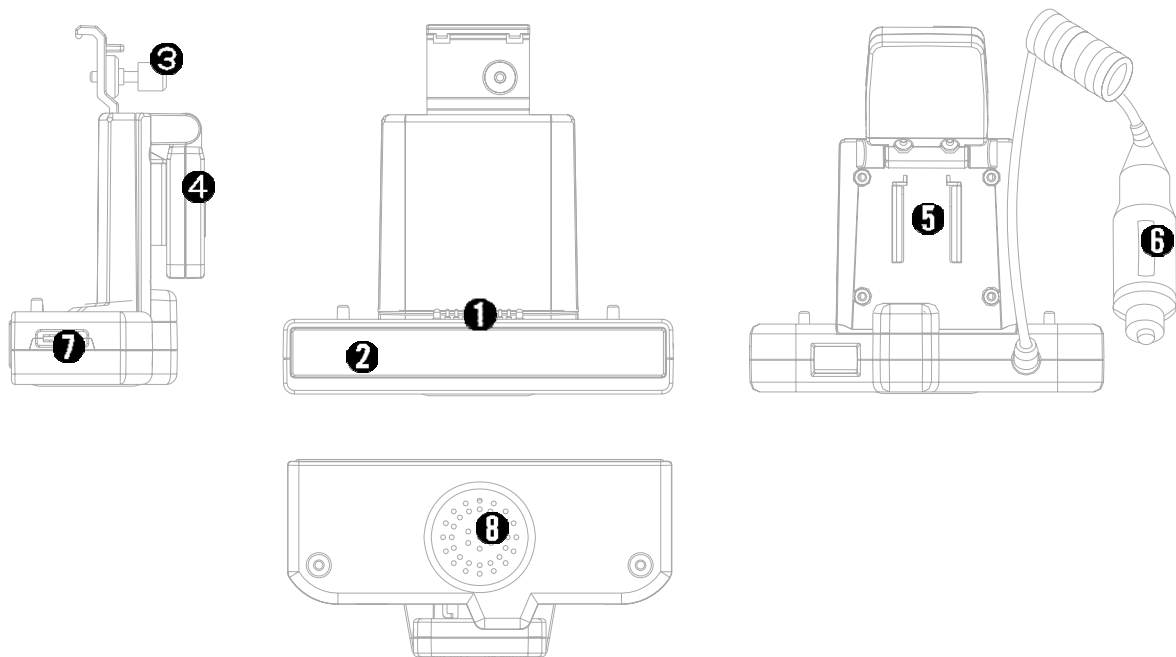
The SLEEP MODE is very similar with the state that the NexView has been turned off by the Power Switch.

In this mode, the Player consume a little power from the battery, but you can restart the system with very short time by pressing the Sleep Button again.

We recommend you to use the SLEEP MODE than the turning off if you will restart the Player soon.

- ③ Hold Switch: Makes no other input applied.
- ④ Reset Button: Resets the system, but current settings will be maintained.
- ⑤ ESC Button: Press this button to cancel the program execution or to return to the previous screen or menu.
- ⑥ Move Buttons: Press these to move to another items when you select icons or files. These buttons are used for more functions while running every program.
- ⑦ OK Button: Runs selected item.
- ⑧ Play/Pause Button: Plays and pauses playback in the Video Player and Audio Player. Selects and deselects files in the File Manager and the Playlist Editing Window.
- ⑨ M Button: Press this button shortly to move to another icon group in any programs. And, press and hold to use the Multitasking function.
- ⑩ Volume Control Button: Controls the sound volume level of the Player. And, moves to the previous or next page on the Text Viewer.
- ⑪ Speaker Out
- ⑫ A/V OUT Port
- ⑬ Earphone Port
- ⑭ USB Host Port
- ⑮ USB Device Port
- ⑯ Power Adaptor Port
- ⑰ Cradle Connection Part

3-2. Cradle



- ❶** Player Connection Part
- ❷** Cradle Power LED: Turned on the red color when power supplied to the Cradle.
- ❸** Fixing Bolt: Used for tight fixing connection between the Player and the Cradle.
- ❹** GPS Antenna: Receives GPS signal from satellites.
- ❺** Suction Cup Connection Part: Used for connecting the Suction Cup to the Cradle.
- ❻** Cigar Jack: Connected to a cigar jack port in your car and supplies power to the Cradle.
- ❼** Volume Control Switch: Controls the sound volume level of the Cradle.
- ❽** Cradle Speaker Out

4. Charging the Battery

- ① An LED under the Play/Pause Button turned on the red color while charging the battery, and turned off when the charging completed.

4-1. With the Power adaptor

Connect the Power Adaptor to the Power Adaptor Port on the left side of the Player.

4-2. With the Cradle

- ① Charging the Battery with the Cradle is can be done only when you use NexView in your car.

Connect the Player to the Cradle, then connect the Cigar Jack of the Cradle to a cigar jack port in your car.

See "Connecting the Player to the Cradle" on page 42 for the steps of the connection.

1. Main Menu



- | | |
|---------------------------------|----------------|
| ❶ GPS Navigation | ❷ Audio Player |
| ❸ FM Radio | ❹ Video Player |
| ❺ Photo Album | ❻ Text Viewer |
| ❼ File Manager | ❽ Settings |
| ❾ The Player Sound Volume Level | |

❶ **The Player Sound Volume Level** displays the general volume level of the Player, it appears when you press the Volume Control Button.

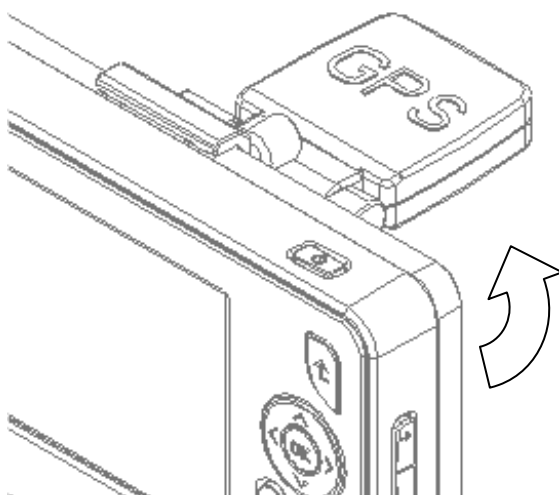
You can also control the level in the **Volume & Sound** menu. (See "Volume & Sound" on page 33.)

The two types of the Main Menu lineup are supported, you can choose One at the **Desktop** menu. (See "Main Menu Setup" on page 36.)

2. GPS Navigation

< Steps before using the GPS navigation >

1. Connect the Player to the Cradle. Please refer to "Connecting the Player to the Cradle" on page 42.
2. Set the GPS Antenna to horizontally and the "GPS" letters on the antenna to faces upward.



3. Connect the Suction Cup to the Cradle and fix them on the windshield or dashboard of your car.
4. Connect the cigar jack of Cradle to a car cigar jack port.

☀ NexView GPS Navigation Manual

A manual for the GPS Navigation is provided separately, please see it for the detail functions of the GPS Navigation.

3. Audio Player

When you start the Audio Player, it will play the first music on the Playlist automatically.



1 Current File's Name

2 Playing Time

3 Progression Bar

- You can go to another frame by touching on this bar.
- You can move forward or back by 10 seconds with pressing the Move Buttons(Left or Right).

4 Play/Pause Icon

- Plays and pause playback.
- Play/Pause Button has the same function.

5 Stop Icon

6 Previous Music Icon

- Touch on this icon to go to the previous music on the Playlist.
- Random music on the Playlist will be played if the Random Mode was selected.
- The Move Button(Up) has the same function.

7 Next Music Icon

- Touch on this icon to go to the next music on the Playlist.
- Random music on the Playlist will be played if the Random Mode was selected.
- The Move Button(Down) has the same function.

8 Mute Icon**9** Volume Control Icons

- Controls the sound volume level of the Audio Player.
- Volume Control Button has the same function.

Playlist Icon

- Touch on this icon, and the Playlist Window will appear.



- Current playing file highlighted with the violet color.
- If you select another file on the list, it will be played at once.
- See "Open Icon" on page 14 for the steps of the Playlist editing.

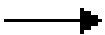

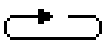
11 View Lyrics Icon

- Touch on this icon, and the Lyrics Window will appear.



- ❗ For viewing the lyrics, the lyrics file's name should be same with the music file's name, and both files should be located in the same folder. NexView supports the lyrics files of LRC format.

12 Playback Mode Selection Icon

-  Plays all musics on the Playlist only one time.
-  Plays all musics on the Playlist repeatly.
-  Plays the current music repeatly.

13 Random Mode Icon

- Plays musics on the Playlist not in sequency, but at random.

14 Information Icon

- Displays the information on the current music.



Open Icon

- Touch on this icon, and the Playlist Editing Window will appear.

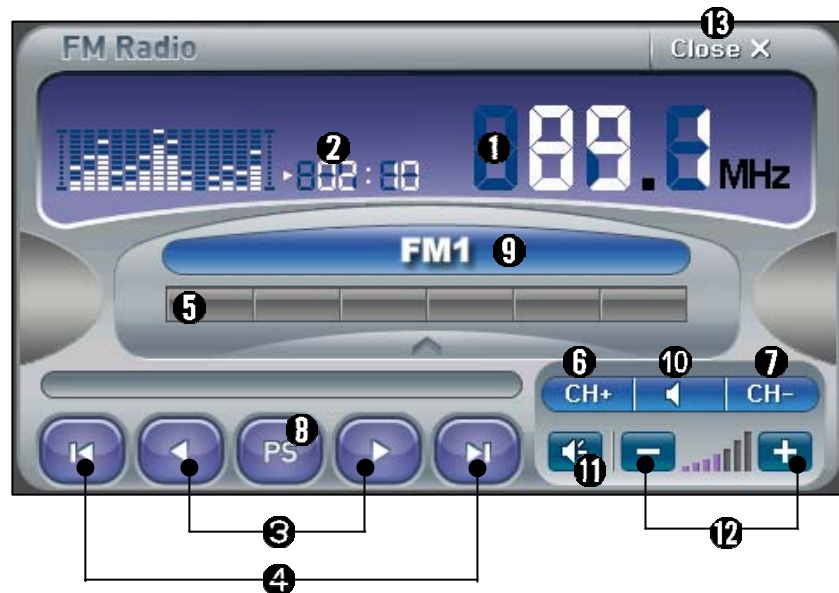


- Select all files you want to play, then touch on the OK Icon or press the OK Button.

16 Close Icon

- Closes the Audio player.
- ESC Button has the same function.

4. FM Radio



❶ Current Frequency

❷ Using Time

❸ Frequency Shift Icons

- Shifts the frequency by 0.1MHz.
- Move Buttons(Left and Right) have the same function.

❹ Auto Searching Icons

- Searches the nearest broadcasting frequency from the current frequency.
- Move Buttons(Up and Down) have the same function.

❺ Channel Icons

- Each channels has and display the frequencies you appointed.
- Touch on any channel, and the memorized frequency will be played.

6 Memorizing Frequency Icon

- If you touch on this icon, the current frequency will be memorized to an empty channel.

7 Deleteting Frequency Icon

- If you touch on this icon, the current frequency will be deleted from the memorized channel.



8 Preset Icon

- If you touch on this icon, the FM Radio will automatically scan the broadcasting frequencies and memorize them to empty channels.
- The scanning will be automatically stopped when all channels memorize their own frequencies, or you can stop it during scanning by touching on the Preset Icon again.

9 Channel Group Icon

- You can change channel groups by touching on this icon.
- There are 4 Channel groups in the FM radio, and each channel has 6 Channels.

10 Sound Output Selection Icon

- Select which one will be used for the FM radio sound output, earphone or internal speaker.
- FM radio sound will be out through the earphone if the icon is , and the sound will be out through the internal speaker if the icon is .

11 Mute Icon

12 Volume Control Icons

- Control the sound volume level of the FM Radio.
- Volume Control Button has the same function.

13 Close Icon

- Closes the FM Radio.
- ESC Button has the same function.

☀ No Antenna Indication

The earphone should be connected to the Player when you use the FM radio because it does duty as an antenna. No Antenna Indication appears on the screen if the earphone is not connected.

5. Video Player

- ❗ We recommend you to play under 320x240 resolution videos for WMV format and under 720x480 resolution videos for MPEG, DivX, Xvid formats.

When you start the Video player, a window will appear to ask whether you want to see the recent movie.



- If you select "Yes", the recent movie will be played.
- If you select "No", the first movie on the playlist will be played.

☀ Viewing the Video Player's Menu

When you start a movie, the Video Player will play it with the full screen mode.

The Video Player's Menu will appear if you touch on any point of the screen or press the M Button shortly.

The Video Player's Menu will disappear and the screen will return to the full screen mode if you do above again.



❶ Current File's Name

❷ Playing Time

❸ Progression Bar

- You can go to another frame by touching on this bar.
- You can move forward or back 1/20 of the whole playing time with pressing the Move Buttons(Left and Right).

❹ Play/Pause Icon

- Plays and pause playback.
- Play/Pause button has the same function.

❺ Stop Icon

❻ Previous Movie Icon

- Touch on this icon to go to the previous movie on the Playlist.
- Random movie on the Playlist will be played if the Random Mode was selected.
- The Move button(Up) has the same function.

7 Next Movie Icon

- Touch on this icon to go to the next movie on the Playlist.
- Random movie on the Playlist will be played if the Random Mode was selected.
- The Move Button(Down) has the same function.

8 Mute Icon**9** Volume Control Icons

- Controls the sound volume level of the Video Player.
- Volume Control Button has the same function.

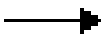


10 Playlist Icon

- Touch on this icon, and the Playlist Window will appear.



- Current playing file highlighted with the violet color.
- If you select another file on the list, it will be played at once.
- See "Open Icon" on page 22 for the steps of the Playlist editing.

11 Playback Mode Selection Icon

-  Plays all movies on the Playlist only one time.
-  Plays all movies on the Playlist repeatedly.
-  Plays the current movie repeatedly.

12 Random Mode Icon

- Plays movies on the Playlist not in sequence, but at random.

13 Option Icon

- Touch on this icon, and the Option Window will appear.



- Brightness: Adjust the brightness
- Contrast: Adjust the contrast
- Show Caption: Choose whether you want to see the caption.
 - ❗ For viewing the caption, the caption file's name should be same with the movie file's name, and both files should be located in the same folder. NexView supports the caption files of SMI format.
- Keep Ratio: Select the picture ratio.

14 Open Icon

- Touch on this icon, and the Playlist Editing Window will appear.



- Select all files you want to play, then touch on the OK Icon or press the OK Button.

15 Close Icon

- Closes the Video player.
- ESC Button has the same function.

6. Photo Album

When you start the Photo Album, it will show the first photo on the Playlist automatically.



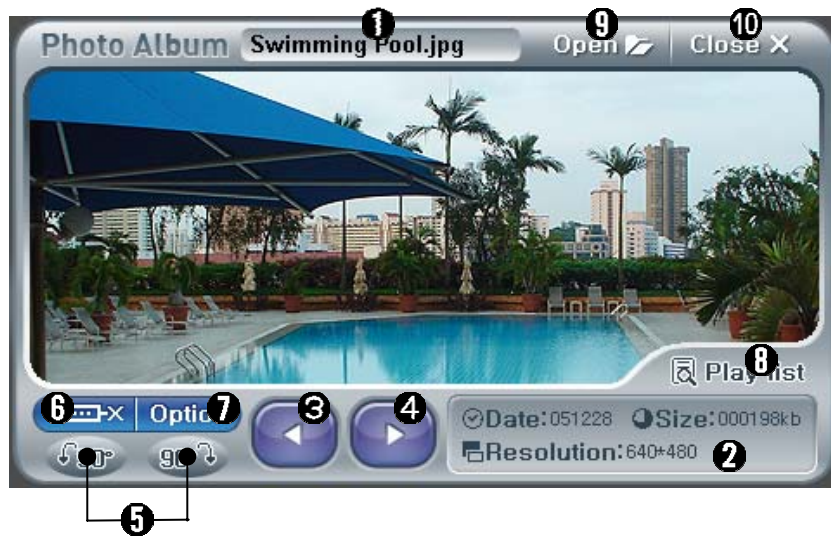
- ❗ The maximum pixel resolution of a photo that can be supported in the Photo Album is 1600x1200.

☀ Viewing the Photo Album's Menu

When you start the Photo Album, it will show photos with the full screen mode.

The Photo Album's Menu will appear if you touch on any point of the screen or press the M Button shortly.

The Photo Album's Menu will disappear and the screen will return to the full screen mode if you do above again.



1 Current File's Name

2 File Information

- Date: Making date of the file
- Size: Size of the file
- Resolution: Resolution of the photo

3 Previous Photo Icon

- Touch on this icon to go to the previous photo on the Playlist.
- The Move Button(Left) has the same function.

4 Next Photo Icon

- Touch on this icon to go to the next photo on the Playlist.
- The Move Button(Right) has the same function.

5 Rotation Icons

- Rotate the photo.

6 Slide Show Icon

- Start the Slide Show
- Stop the Slide Show

7 Slide Show Option Icon

- Touch on this icon, and the Option Window will appear.



- Slide Show: Choose whether the Slide Show plays.
- Time Interval: Select the time interval between each photos in the slide show.

8 Playlist Icon

- Touch on this icon, and the Playlist Window will appear.



- Current playing file highlighted with the violet color.
- If you select another file on the list, it will be played at once.
- See "Open Icon" on page 26 for the steps of the Playlist editing.

9 Open Icon

- Touch on this icon, and the Playlist Editing Window will appear.



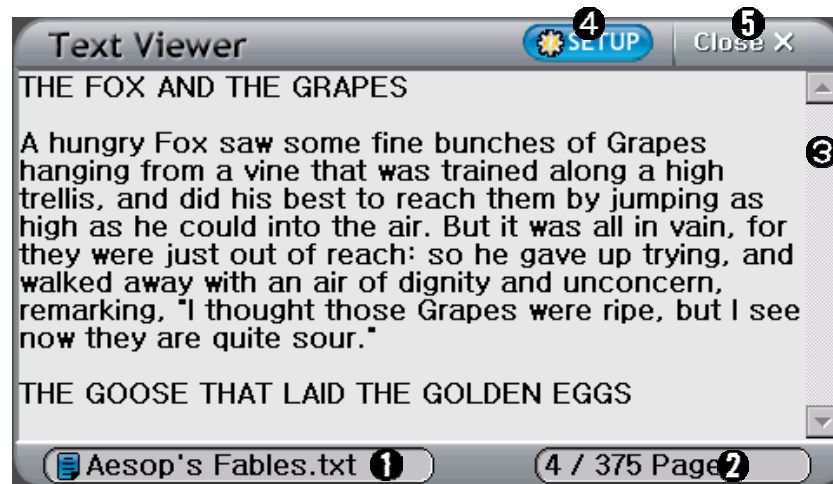
- Select all files you want to play, then touch on the OK Icon or press the OK Button.

10 Close Icon

- Closes the Photo Album.
- ESC Button has the same function.

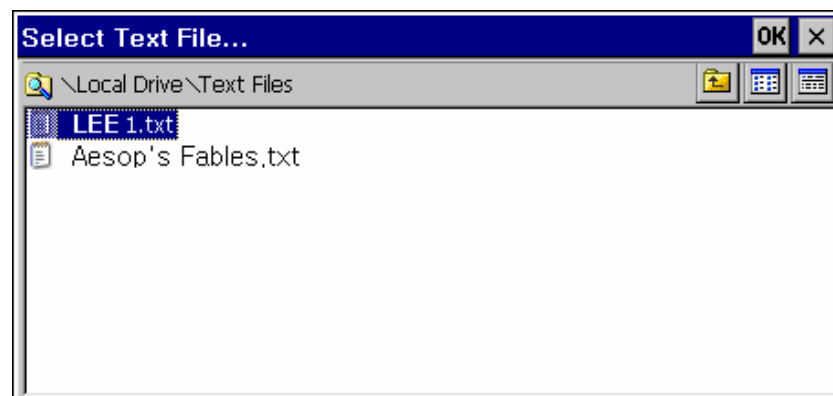
7. Text Viewer

When you start the Text Viewer, it will show the recent document.



1 Current File's Name

- Touch on this icon or press the OK Button, and the file selection window will appear. You can select a text file on this window that you want to read.



② Pages Information

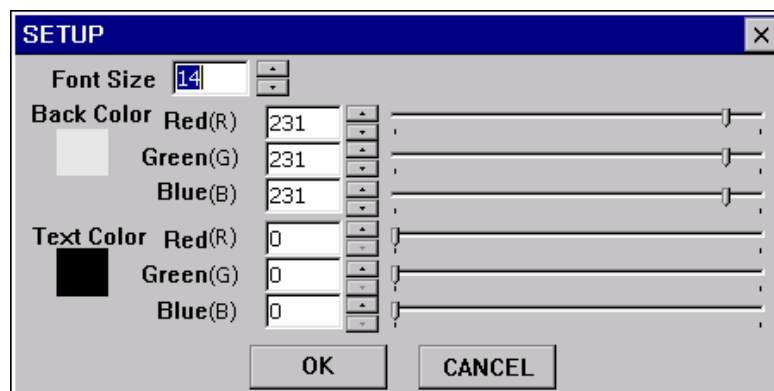
- Displays the current page's number and the last page's.

③ Scroll Bar

- You can go to another page or line by touching on this bar.
- The Volume Control Button scrolls up or down the text by a page.
- The Move Buttons(Up and Down) scrolls up or down the text by a line.

④ Setup Icon

- Touch on this icon, and the Setup Window will appear. You can select the font size, background color and text color.

**⑤** Close

- Closes the Text Viewer.
- ESC Button has the same function.

8. File Manager



❶ Directory Window

❷ File Window

❸ If you press the M button shortly, you can go from one window to the other.

❹ Current Directory Path

❺ Memory Usage Information Icon

- Touch on this icon, and the Information Window will appear.



5 Execution Icon

- Execute the highlighted file.
- The OK Button has the same function.

6 Selecting All Icon

- Selects all files in the current folder.

7 Deselecting All Icon

- Deselects all files in the current folder.

❗ You can select or deselect files one by one by touching on the file name or pressing the Play/Pause Button.

8 Copy Icon

- Touch on this icon to copy the selected files to another folder.

9 Move Icon

- Touch on this icon to move the selected files to another folder.

10 Delete Icon

- Touch on this icon to delete the selected files.

11 Close Icon

- Closes the File Manager.
- ESC Button has the same function.

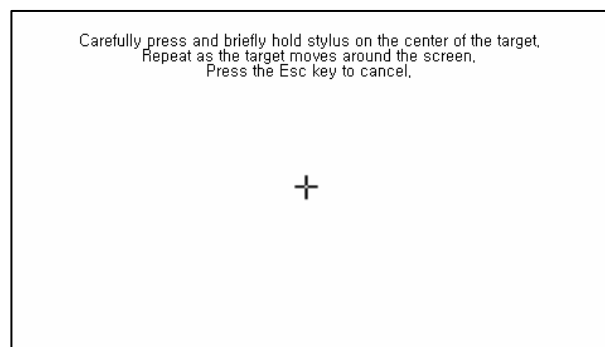
9. Settings



- | | |
|-------------------|------------------|
| ❶ Adjust | ❷ TV-OUT |
| ❸ Power | ❹ Volume & Sound |
| ❺ Firmware Update | ❻ Language Setup |
| ❼ Desktop Setup | ❽ Information |

9-1. Adjusting the Touch Point

Touch on the **Adjust** icon.

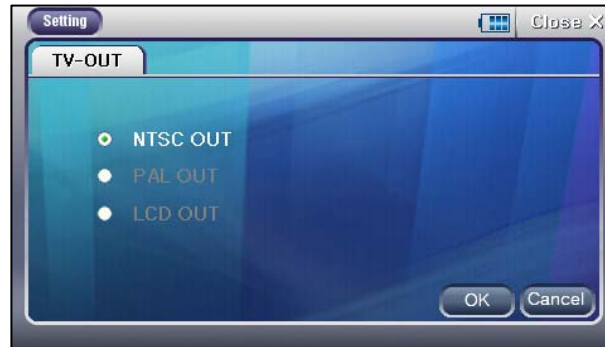


Adjust the touch point with this menu when it is not matched well.

- Adjust the touch point as the guide on the screen.
- Touch softly and hold for over 3 seconds when you touch on the target.

9-2. TV-OUT

Touch on the TV-OUT icon.



In order you to see the video output from NexView with your TV screen, connect the Player to the TV, then set up this menu.

- Select the **NTSC OUT** or the **PAL OUT** when you want to see the output with the TV.

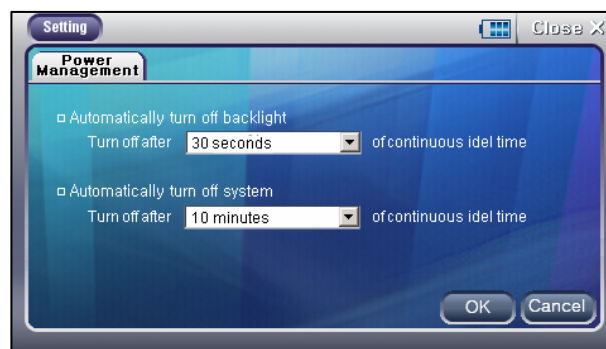
⚙ NTSC & PAL

NTSC and PAL are the types of TV resolution standard. Please check the type of your TV before using the TV-OUT,

- Select the **LCD OUT** when you want to see the output with the Player's LCD.

9-3. Power Management

Touch on the Power icon.



Set up the times for the power saving modes.

9-4. Volume & Sound

Touch on the **Volume & Sound** icon



- System Volume: Set up the general volume level of the Player.
- Menu Selection Sound: Choose whether the sounds effect will be used when you select icons or files.
- System Startup Sound & System Off Sound: Choose sound files that will be played while the system startup and off. The sound files should be a WAV format.

9-5. Firmware Update

Touch on the **Firmware Update** icon



- There are two types of Firmware Updates for NexView, the **O/S Update** and the **System Application Update**.
- You can download the update files from our website www.sciontech.co.kr.

< Steps for the O/S Update >

1. Download the latest version of O/S Update File to your computer from the website.
2. Connect the Player to the computer with the USB cable.
3. Extract the file's compression.
4. Copy the extracted files to **Local Drive \System \OS** folder of NexView.
5. Disconnect the Player from the computer.
6. Go to the **Firmware Update** menu.
7. Select the **O/S Update**, then touch on the **Update** icon.
8. Restart the Player.

❗ The touch point is subject to be not matched well after the O/S Update. In this case, adjust the touch point at the **Adjust** menu. (See "Adjusting the Touch Point" on page 31.)

< Steps for System Application Update >

1. Download the latest version of System Application Update File to your computer from the website.
2. Connect the Player to the computer with the USB cable.
3. Extract the files's compression.
4. Copy the extracted files to **Local Drive \ System \ System Applications** folder of NexView.
5. Disconnect the Player from the computer.
6. Go to the **Firmware Update** menu.
7. Select the **System Application Update**, then touch on the **Update** icon.

- You can run both updates at a time by select the **Update All** if both update files were all prepared.

☀ Checking the current software versions of NexView

You can see the current software versions of the Player at the **Information** menu. (See "Viewing the System Information" on page 40.)

9-6. Selecting Language

Touch on the **Language Setup** icon.



Select a language, then restart the Player.

- ❗ The touch point is subject to be not matched well after the O/S Update. In this case, adjust the touch point at the **Adjust** menu.
(See "Adjusting the Touch Point" on page 31.)
-

9-7. Main Menu Setup

Touch on the **Desktop Setup** icon.



- | | |
|------------------------|------------------------|
| ❶ Desktop Tap | ❷ Frame Tap |
| ❸ Background Color Tap | ❹ Background Image Tap |

1 Desktop Tap

You can select one from the two types of the Main Menu lineup.

- Fixed Desktop: The Main Menu lineup is fixed as the following picture and nothing can be changed.



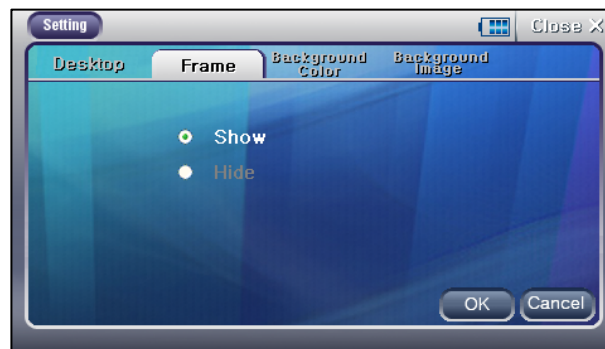
- User Setting Desktop: The Main Menu lineup is fixed as the following picture and you can change the Frame, Background Color and Background Image.



- Recovery Default Desktop Setting: The Main menu lineup will be changed into the Fixed Desktop and all settings for the Frame, Background color and Image will be cleared.

② Frame Tap

- This tap will be activated only when you select the **User Setting Desktop** at the **Desktop Tap**.
- Choose whether the Main Menu will show or hide the out frame.



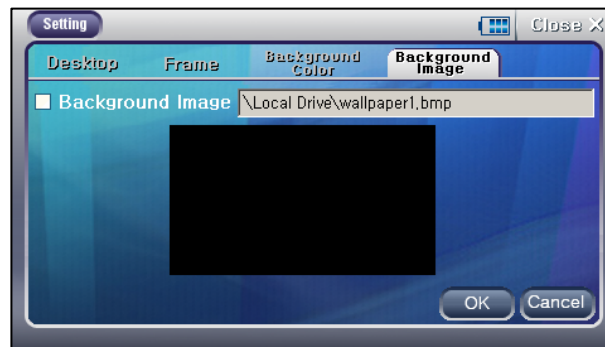
③ Background Color Tap

- This tap will be activated only when you select the **User Setting Desktop** at the **Desktop Tap**.
- Select the background color and gradient effect for the Main menu.



④ Background Image Tap

- This tap will be activated only when you select the **User Setting Desktop** at the **Desktop Tap**.



- Choose a file for the background image of the Main Menu.

❗ The background image file should be a BMP format and 480x272 resolution.

❗ The background color and gradient effect will be ignored if you choose a background image.

9-8. Viewing the System Information

Touch on the **Information** icon.



You can see the memory usage state and current software versions of the Player.

10. Using the Multitasking Function

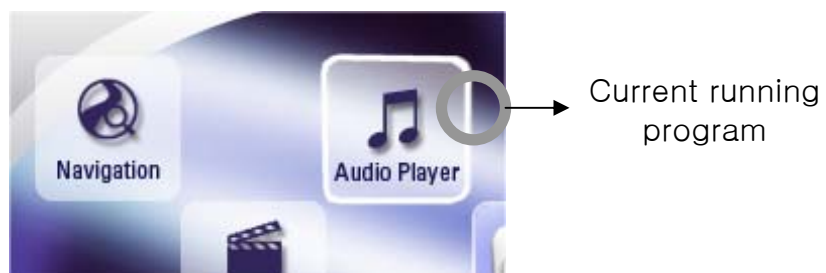
☀ What is Multitasking

Multitasking means that two or above programs can be executed in a device simultaneously.

NexView supports the Multitasking, you can enjoy the various functions of NexView simultaneously.

Push the M button and hold for over 2 seconds while a program like Navigation and Audio Player running, and the Main Menu will appear without stopping the current running program.
Select another program, then it will be executed simultaneously with the current running program.

❗ The icons with twinkling edges in the Main Menu are current running programs when you are using the Multitasking Function. If there is no input for 5 seconds on that screen, the most recent one of the current running programs will be opened automatically.

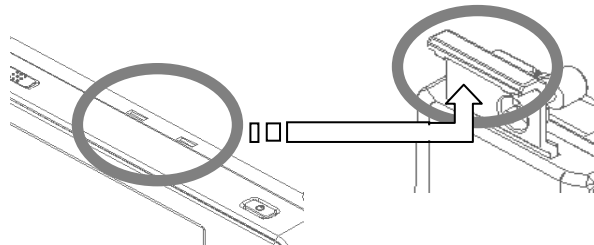


☀ The programs can be executed simultaneously by the Multitasking Function

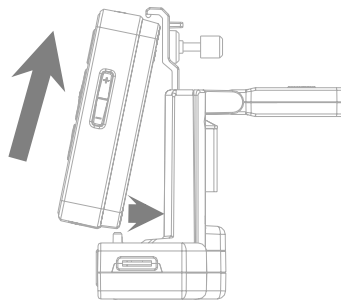
- GPS Navigation & Audio Player
- Photo Album & Text Viewer & Audio Player
- Photo Album & Text Viewer & FM Radio

1. Connecting the Player to the Cradle

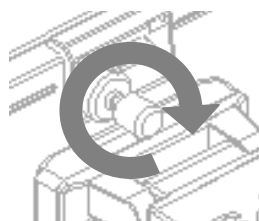
- ❗ Before connecting the Player to the Cradle, take the Cover off on the Cradle Connection Part of the Player. Please cover it again when the Player disconnected from the Cradle.
- ❗ Don't connect the Power Adaptor or USB cables to the Player when it is connected to the Cradle.
- ① Put the rising parts of the Cradle to the grooves on the Player's top side.



- ② Push the Player upward and into the Cradle, and make the connection parts of them are well connected.



- ③ Fasten the Fixing Bolt on the backside of the Cradle.



2. Connecting the Player to a Computer

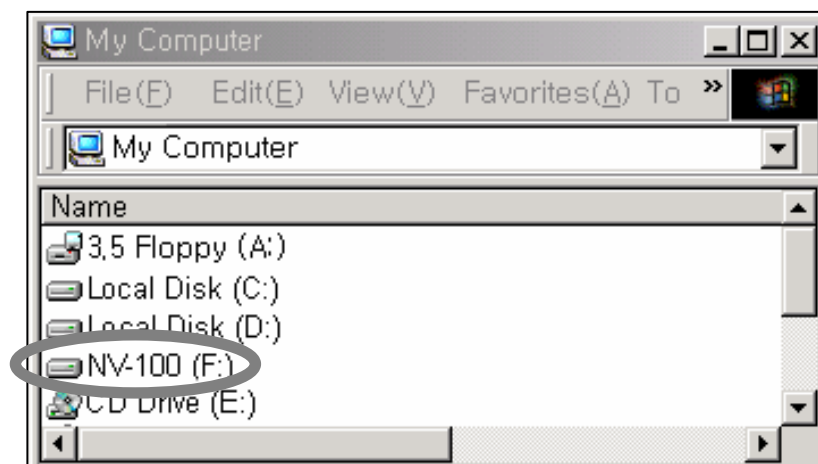
⚙ PC system requirements


The PC system should be the Microsoft Windows XP or 2000 for the NexView connection.

- ① Connect the USB Cable to the USB Device Port (USB S) on the leftside of the Player, and connect the other end to your computer.
- ② "USB Connected..." message appears on the Player's screen.



- ③ NexView appears as a mass storage device, **NV-100** on your computer.



- ❗ Before disconnecting the Player from the computer, click the **Safely Remove Hardware** icon  on the taskbar, then click **Safely Remove USB Mass Storage Device**.
- ❗ If the Player is connected to a computer with the USB cable when it turned off, it can not be turned on by the Power Switch. In this case, please disconnect the USB Cable from the Player, then turn it on.

3. Connecting the Player to a TV

- ① Connect the A/V Cable to the A/V OUT Port on the leftside of the Player, and connect the other end to a TV.
- ② Select the **NTSC OUT** or the **PAL OUT** at the **TV-OUT** menu. See "TV-OUT" on page 32.

4. Connecting the Player with another Mass Storage Device

☀ USB Host function of NexView

NexView has the USB Host function, that makes NexView can be connected with another Mass Storage Device like a Digital Camera and USB Memory without computer.

You can play, manage, and store the files of your Mass Storage Devices with NexView at any where, at any time.

- ① Connect the USB Host Cable to the USB Host Port (USB M) on the leftside of the Player, and connect the other end to another Mass Storage Device.
- ② The connected Mass Storage Device appears as an USB Drive Disk on NexView.



1. General Specifications

| | | |
|---------|------------------|------------------------------|
| General | Product name | NexView NV-100 |
| | Dimension | Player: 136x78x23 (mm) |
| | Weight | Player: 285g Cradle: 190g |
| | HDD | 20 Gbyte |
| | USB | 2.0 Device / 1.1 Host |
| | Internal Speaker | Player: 0.5 W Cradle: 2 W |
| | Battery | Li-Polymer 3,000mAh |

| | | |
|-------|------------------|--|
| Video | LCD | 4" Wide screen TFT LCD 480x272 resolution / 16 million colors Touch-screen |
| | Format supported | WMV(7/8/9), ASF, AVI, DivX(3/4/5), XviD, MPEG(1/2/4) |
| | Caption | SMI |
| | Frame | 30 fps |

| | | |
|-------|------------------|---------------|
| Audio | Format supported | WMA, MP3, WAV |
| | S/N Ratio | Over 90 dB |
| | Lyrics | LRC |

| | | |
|----------------|--------------|-------------------|
| GPS Navigation | GPS Receiver | Trimble Lassen iQ |
| | GPS Antenna | Internal |
| | Channel | 12 channels |

| | | |
|-------------|------------------|------------------|
| Photo Album | Format supported | JPEG, BMP |
| Text Viewer | Format supported | TXT |
| FM Radio | Frequency range | 87.5 – 108 (MHz) |
| | Channel | 24 channels |

| | | |
|--------|--------|---------------------|
| TV-OUT | Types | NTSC / PAL |
| | Format | Composite Video-Out |

2. Contact Information

| | |
|---------|--|
| Website | www.sciontech.co.kr |
| Tel. | +82-2-3422-0490 |
| E-mail | help@sciontech.co.kr |



Others

This device complies with part 15 of the FCC Rules. Operation is subject to the following two conditions:

- (1) This device may not cause harmful interference, and
- (2) this device must accept any interference received, including interference that may cause undesired operation.

Note: This equipment has been tested and found to comply with the limits for a Class B digital device, pursuant to part 15 of the FCC Rules. These limits are designed to provide reasonable protection against harmful interference in a residential installation. This equipment generates, uses and can radiate radio frequency energy and, if not installed and used in accordance with the instructions, may cause harmful interference to radio communications. However, there is no guarantee that interference will not occur in a particular installation.

Changes or modifications not expressly approved by the party responsible for compliance could void the user's authority to operate the equipment.



<http://www.sciotech.co.kr>