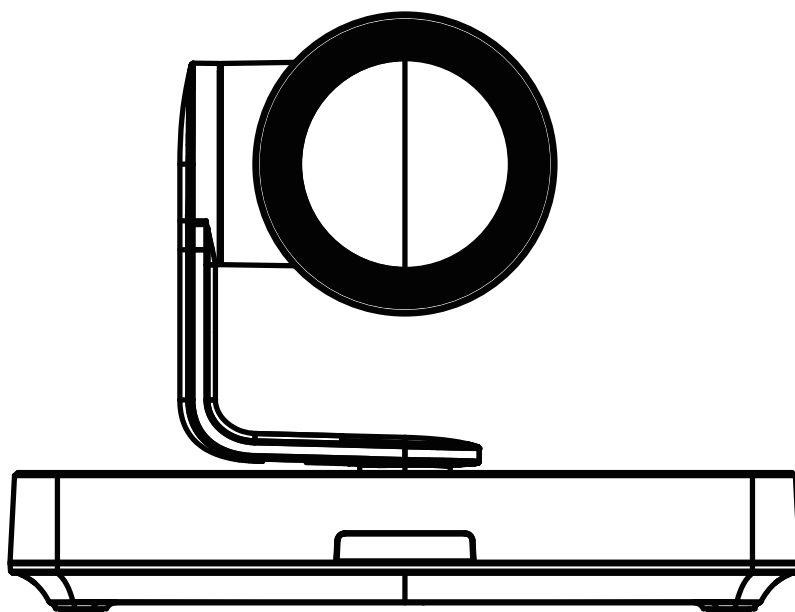


**Yealink**



Yealink Documentation  
support.yealink.com

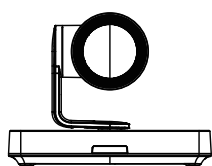
# Video Conferencing Camera UVC85



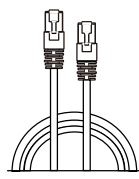
English | 简体中文

**Quick Start Guide V1.0**

# Package Contents

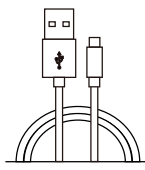


UVC85



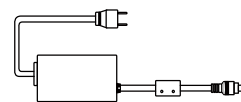
(7.5m, 24.60ft)

CAT5e UTP (RJ45 - RJ45) Cable



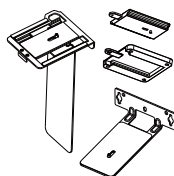
(2.5m, 8.20ft)

USB 2.0 (A - B) Cable



(3.5m, 11.48ft)

Power Adapter (48V/0.7A)



Mounting Bracket



× 4

Φ6 \* 30 mm, white, Polyamide



× 4

4\*30 FAHOZN3+ (+)



× 5

1/4" -20 UNC

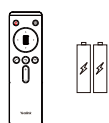


× 2

M3\*5.8KM0ZN3+



Lens Cap



VCR20 Remote Control



× 5

(20 \* 200 mm)  
Cable Ties



Quick Start Guide

💡 1. We recommend that you use the accessories provided or approved by Yealink. The use of unapproved third-party accessories may result in poor performance.

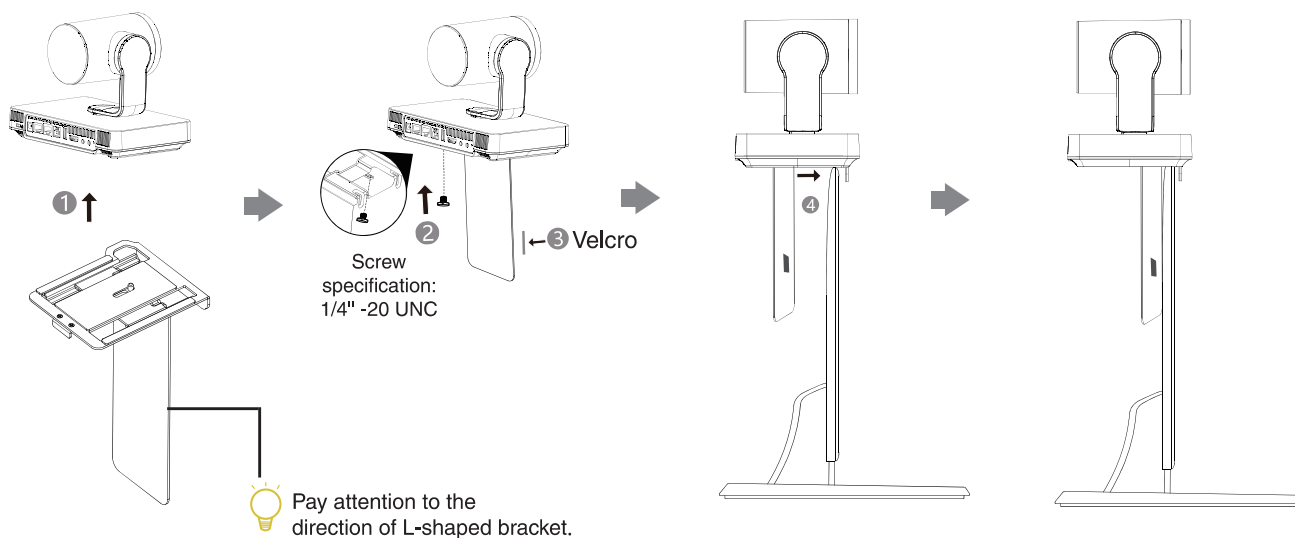
## UVC85 Installation

### • Put on a Flat Surface

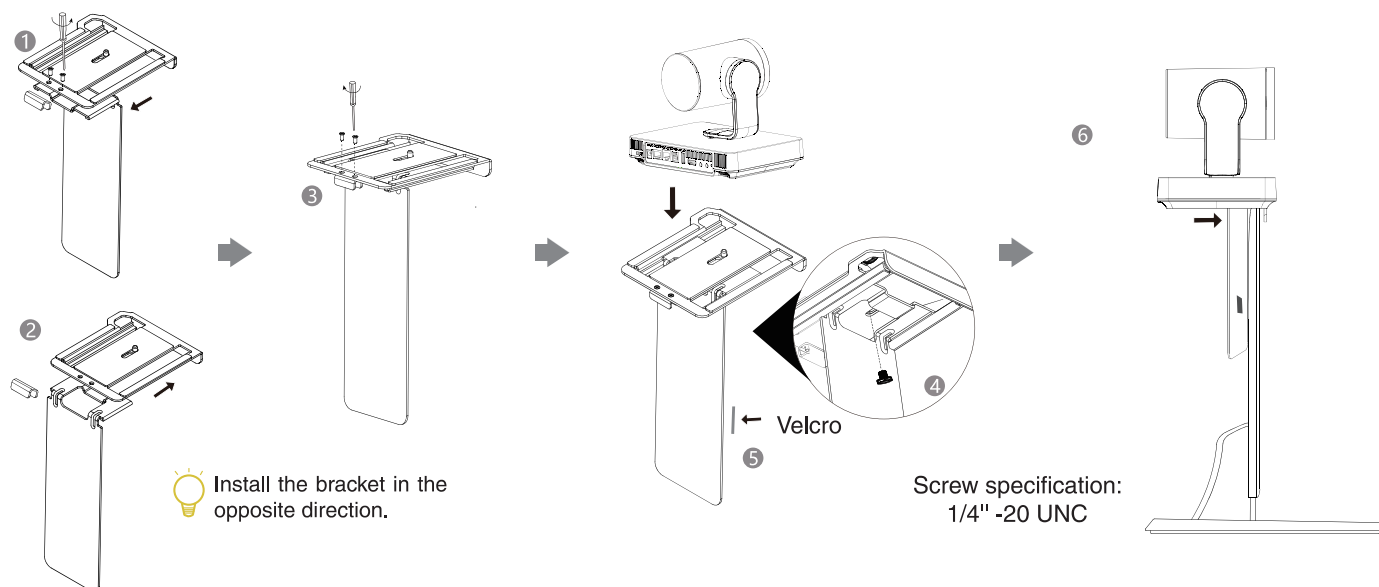
You can put the UVC85 on the conference table, and make sure that the angle of inclination of the UVC85 is not more than 5 degrees to ensure proper operation.

### • Mount on top of a display

Choose the following installation method when the thickness of the TV is between 0 mm and 70 mm.

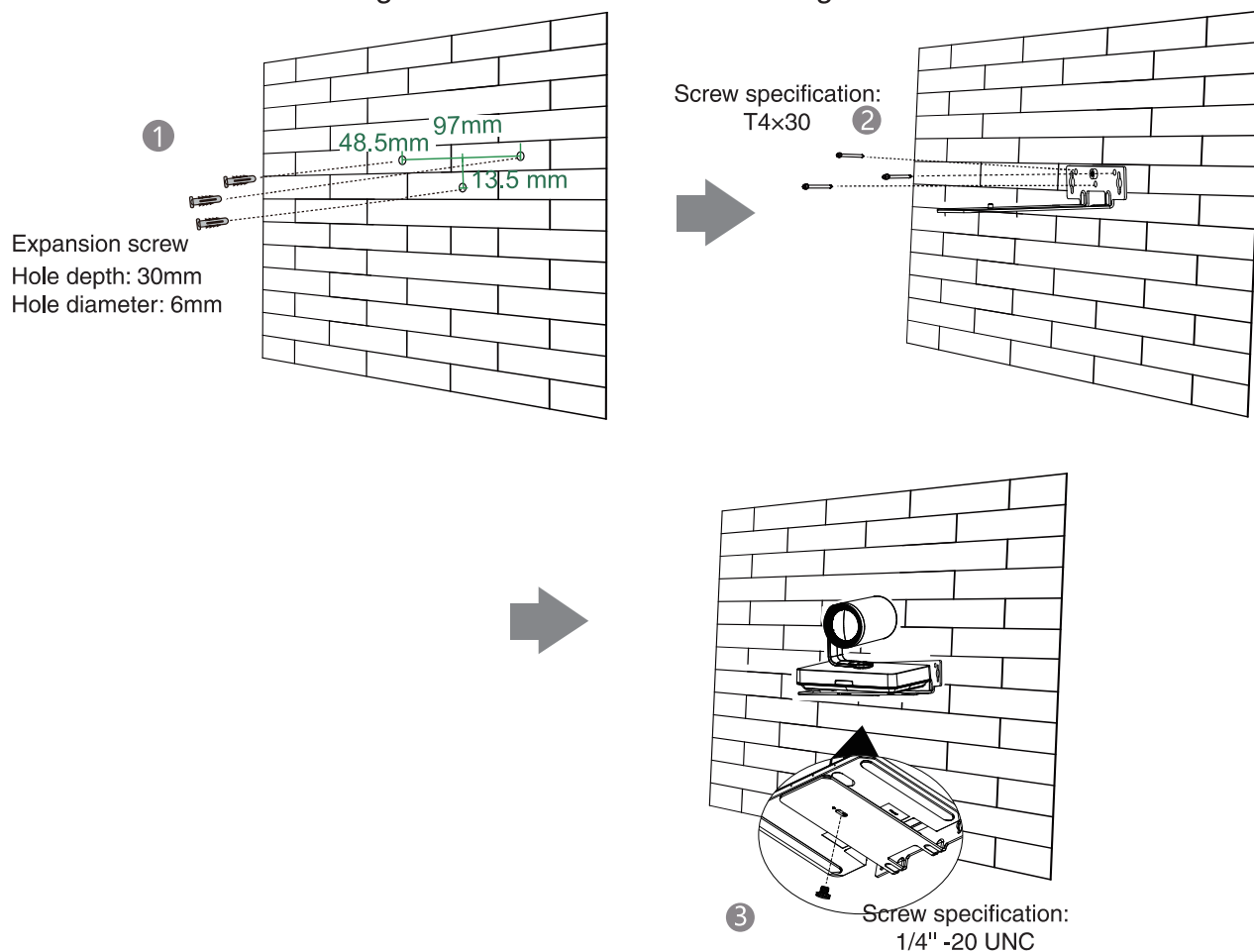


Choose the following installation method when the thickness of the TV is between 46 mm and 146 mm.

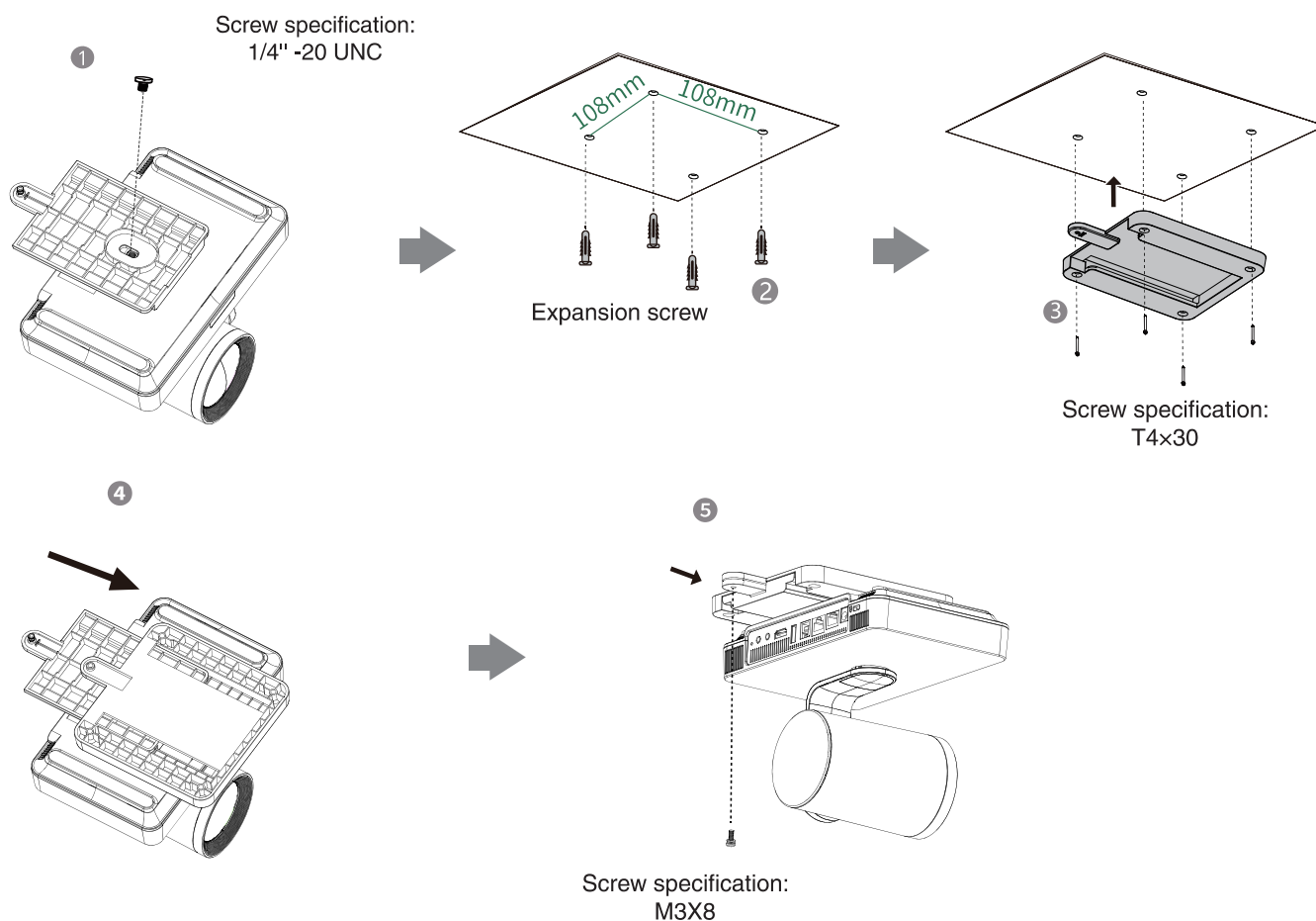



## • Mount on the Wall

The recommended height is 1.55 m-1.85 m above the ground.



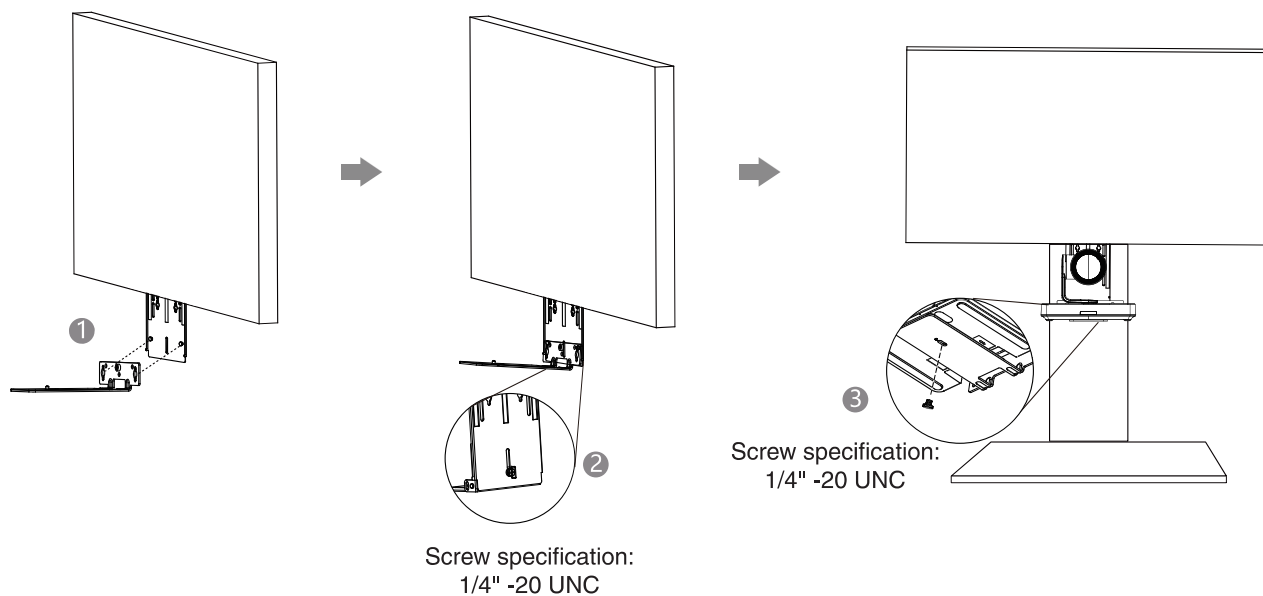
## • Mount on the Ceiling



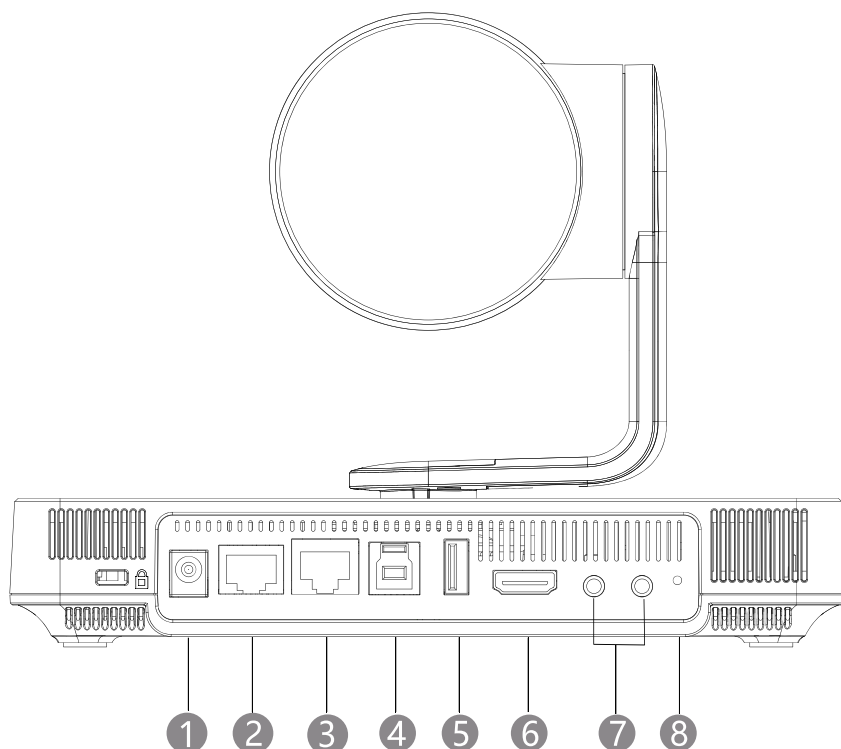
 Please tighten the screws with a screwdriver to prevent the camera from falling off.

## • Mount onto a TV Mount

You need to purchase a TV Mount separately.



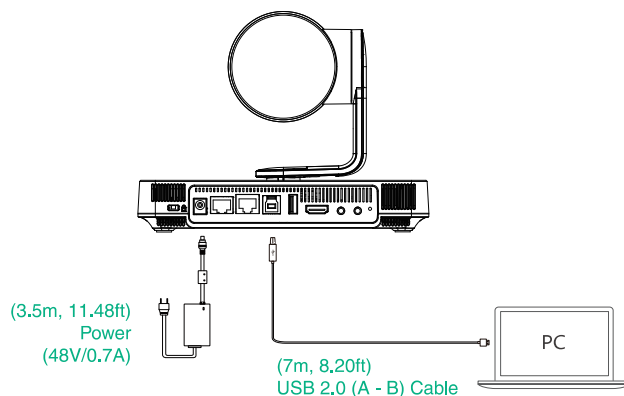
# Hardware Interface Instructions



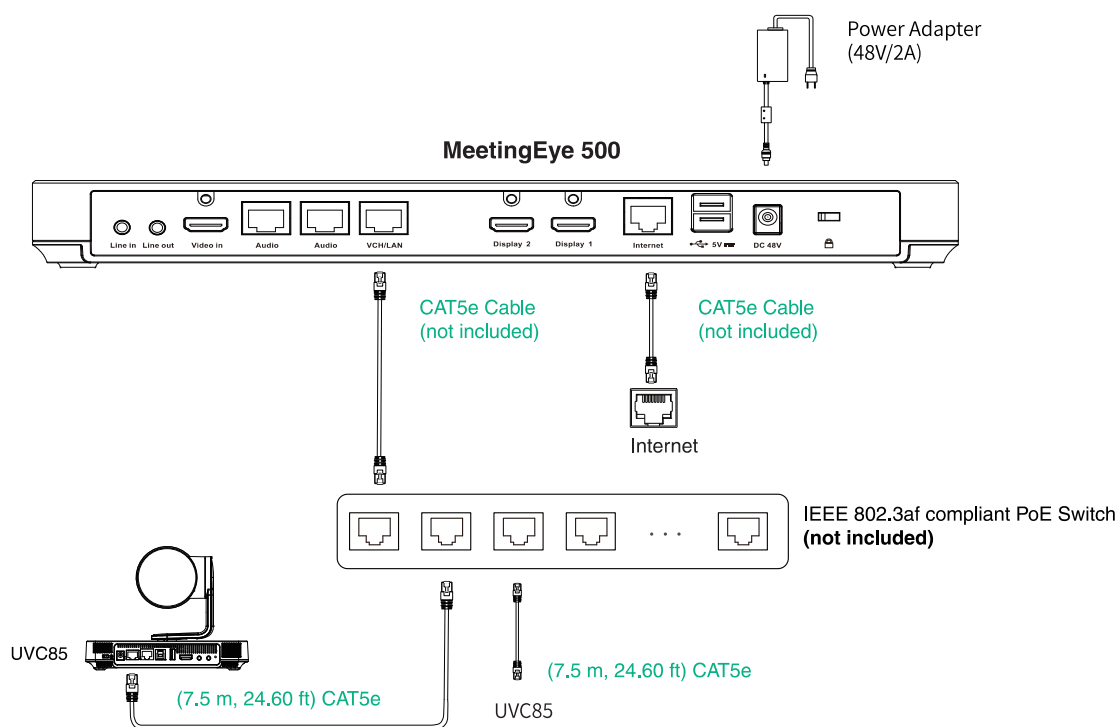
No.	Item	Description
1	DC48V	Connect to the power adapter.
2	VCH Port	In the MVC system, connect to audio device (for example: VCM35, CS10, CM20).
3	Internet Port	In video conference system, connect to the endpoint (for example: MeetingEye 500).
4	PC Port	Connect to a PC as video output.
5	USB-A Port	Connect to DD10 or USB disk.
6	HDMI out	In the VCS system, used for sharing content or camera image (it does not apply to the MVC system).
7	Line in /out	The UVC85 can be connected to a third-party audio input and output devices device via a 3.5mm audio cable.
8	Reset	Reset the UVC85 to factory defaults.

# UVC85 Connection

- Connect to PC:

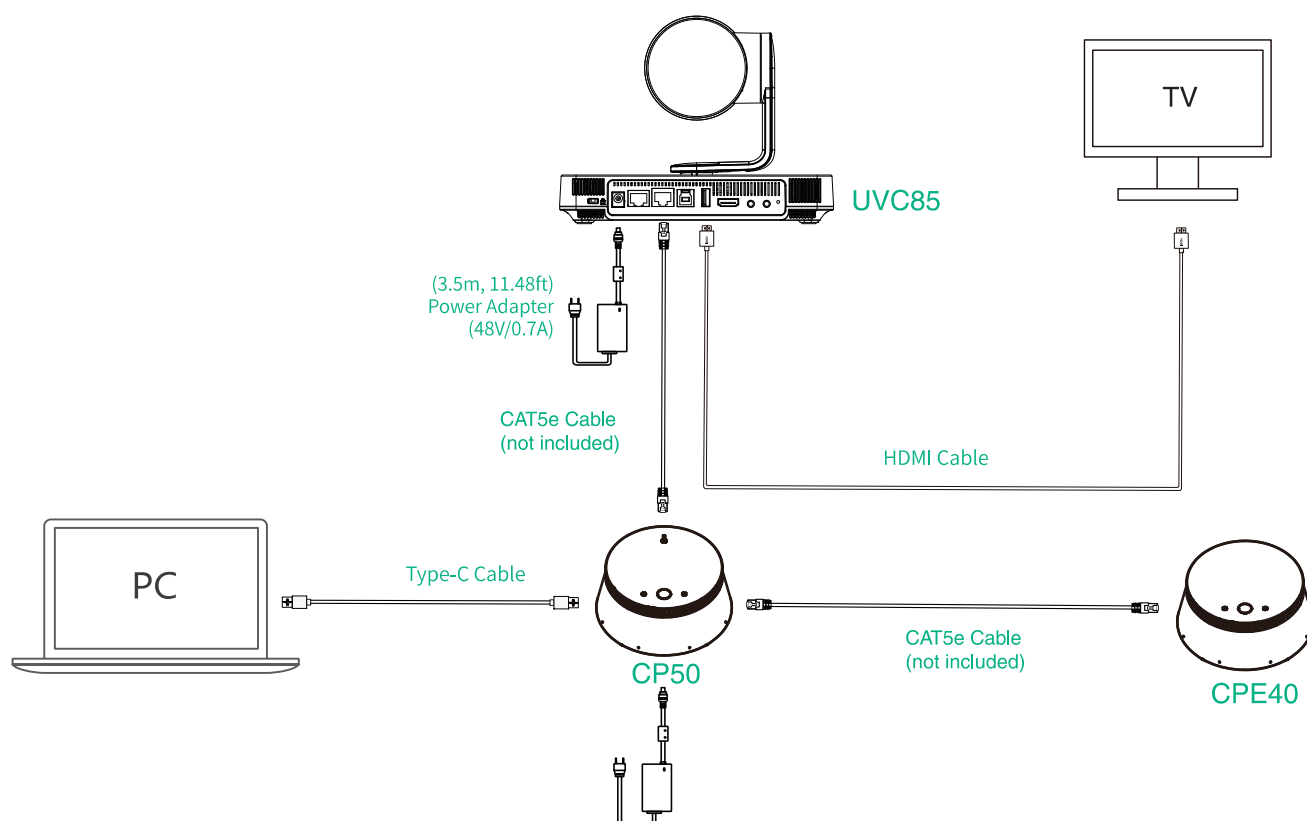


- Connect to the video conference system:



- Supports connecting up to 2 cameras via PoE switch.
- Not included accessories requirements:
  - » Ethernet cable: CAT5e or higher ethernet cable.
  - » PoE switch: If you use PoE to connect cameras, you need to use PoE+.

- USB-BYOD Connection

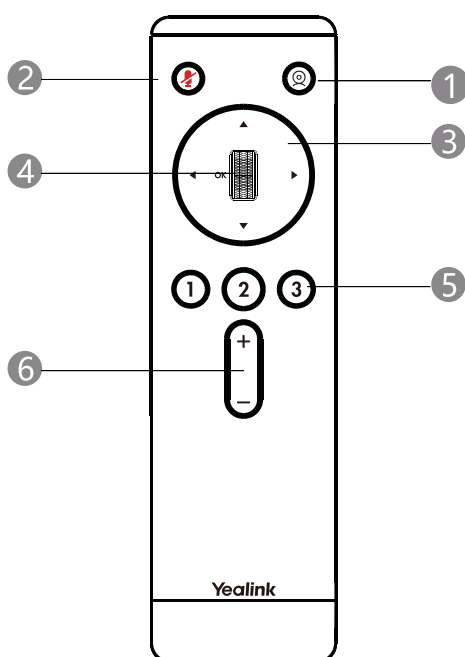


## LED Indicator Instructions

LED indicators on the UVC85:

LED Status	Description
Off	The UVC85 is powered off.
Solid green	The UVC85 is active.
Solid red	The UVC85 is in sleep mode.
Flashing orange	The UVC85 is upgrading firmware.
Flashing red	The UVC85 is in recovery mode.

## VCR20 Remote Control Instructions



No.	Item	Description
1	Tracking Mode Key	Long press the Tracking Mode key to switch among the auto framing, the speaker tracking, or off.
2	Mute Key	Mute or unmute the microphone.
3	Navigation Key	Pan and tilt the camera to adjust the viewing angle.
4	Scroll Wheel	<ul style="list-style-type: none"> <li>• Scroll up to zoom camera in.</li> <li>• Scroll down to zoom camera out.</li> </ul>
5	Preset Key	<ul style="list-style-type: none"> <li>• Long press the number key to add/update the preset position.</li> <li>• Short press the number key to apply the preset position.</li> </ul>
6	Volume Key	Adjust the volume.



# Regulatory Notices

## Operating Ambient Temperatures

- Operating temperature: -10 to +45°C (+14 to 113°F)
- Relative humidity: 5% to 90%, noncondensing
- Storage temperature: -30 to +70°C (-22 to +158°F)

## Warranty

Our product warranty is limited only to the unit itself, when used normally in accordance with the operating instructions and the system environment. We are not liable for damage or loss resulting from the use of this product, or for any claim from a third party. We are not liable for problems with Yealink device arising from the use of this product; we are not liable for financial damages, lost profits, claims from third parties, etc., arising from the use of this product.

## Explanation of the symbols

- DC symbol  
— is the DC voltage symbol.
- WEEE Warning symbol



To avoid the potential effects on the environment and human health as a result of the presence of hazardous substances in electrical and electronic equipment, end users of electrical and electronic equipment should understand the meaning of the crossed-out wheeled bin symbol. Do not dispose of WEEE as unsorted municipal waste and have to collect such WEEE separately.

## Restriction of Hazardous Substances Directive (RoHS)

This device complies with the requirements of the EU RoHS Directive. Statements of compliance can be obtained by contacting support@yealink.com.

## Safety Instructions

Save these instructions. Read these safety instructions before use!



### General Requirements

- Before you install and use the device, read the safety instructions carefully and observe the situation during operation.
- During the process of storage, transportation, and operation, please always keep the device dry and clean, avoid collision and crash.
- Please attempt not to dismantle the device by yourself. In case of any discrepancy, please contact the appointed maintenance center for repair.
- Please refer to the relevant laws and statutes while using the device. Legal rights of others should be respected as well.



### Environmental Requirements

- Do not cover ventilation openings, this equipment is not intended to be used on soft support.
- The marking information is located at the exterior of the bottom.
- Place the device at a well-ventilated place. Do not expose the device under direct sunlight.
- Keep the device dry and free of dusts.
- Do not place the device on or near any inflammable or fire-vulnerable object, such as rubber-made materials.
- Keep the device away from any heat source or bare fire, such as a candle or an electric heater.



### Operating Requirements

- Do not let a child operate the device without guidance.
- Do not let a child play with the device or any accessory in case of accidental swallowing.
- Please use the accessories provided or authorized by the manufacturer only.
- The power supply of the device shall meet the requirements of the input voltage of the device. Please use the provided surge protection power socket only.
- Before plugging or unplugging any cable, make sure that your hands are completely dry.
- Do not spill liquid of any kind on the product or use the equipment near water, for example, near a bathtub, washbowl, kitchen sink, wet basement or near a swimming pool.
- During a thunderstorm, stop using the device and disconnect it from the power supply. Unplug the power plug and the Asymmetric Digital Subscriber Line (ADSL) twisted pair (the radio frequency cable) to avoid lightning strike.
- If the device is left unused for a rather long time, disconnect it from the power supply and unplug the power plug.
- When there is smoke emitted from the device, or some abnormal noise or smell, disconnect the device from the power supply, and unplug the power plug immediately.
- Contact the specified maintenance center for repair.
- Do not insert any object into equipment slots that is not part of the product or auxiliary product.
- Before connecting a cable, connect the grounding cable of the device first. Do not disconnect the grounding cable until you disconnect all other cables.



### Cleaning Requirements

- Before cleaning the device, disconnect it from the power supply.
- Use a piece of soft, dry and anti-static cloth to clean the device.
- Keep the power plug clean and dry.

## Troubleshooting

The usage environment is out of operating temperature range.

1. Use in the operating temperature range.

The cable between the unit and the Yealink device is connected incorrectly.

1. Connect the cable correctly.

Some dust, etc., may be in the port.

1. Clean the port.

Contact your dealer or authorized service facility for any further questions.

## FCC CAUTION

This device complies with part 15 of the FCC Rules. Operation is subject to the following two conditions: (1) This device may not cause harmful interference, and (2) this device must accept any interference received, including interference that may cause undesired operation. Any changes or modifications not expressly approved by the party responsible for compliance could void the user's authority to operate the equipment.

Note: This equipment has been tested and found to comply with the limits for a Class B digital device, pursuant to part 15 of the FCC Rules. These limits are designed to provide reasonable protection against harmful interference in a residential installation. This equipment generates, uses and can radiate radio frequency energy and, if not installed and used in accordance with the instructions, may cause harmful interference to radio communications. However, there is no guarantee that interference will not occur in a particular installation. If this equipment does cause harmful interference to radio or television reception, which can be determined by turning the equipment off and on, the user is encouraged to try to correct the interference by one or more of the following measures:

- Reorient or relocate the receiving antenna.
- Increase the separation between the equipment and receiver.
- Connect the equipment into an outlet on a circuit different from that to which the receiver is connected.
- Consult the dealer or an experienced radio/TV technician for help.

The equipment complies with FCC radiation exposure limits set forth for an uncontrolled environment. The equipment should be installed and operated with minimum distance 20cm between the radiator and your body.

This transmitter must not be co-located or operating in conjunction with any other antenna or transmitter.

## ISED WARNING

This device complies with Innovation, Science and Economic Development Canada licence-exempt RSS standard(s). Operation is subject to the following two conditions: (1) this device may not cause interference, and (2) this device must accept any interference, including interference that may cause undesired operation of the device.

Le présent appareil est conforme aux CNR d'Industrie Canada applicables aux appareils radio exempts de licence. L'exploitation est autorisée aux deux conditions suivantes : (1) l'appareil ne doit pas produire de brouillage, et (2) l'utilisateur de l'appareil doit accepter tout brouillage radioélectrique subi, même si le brouillage est susceptible d'en compromettre le fonctionnement.

This Class B digital apparatus complies with Canadian ICES-003. Cet appareil numérique de la classe B est conforme à la norme NMB-003 du Canada.

Les communications effectuées au moyen de cet appareil ne sont pas nécessairement protégées des indiscrétions.

The equipment complies with ISED radiation exposure limits set forth for an uncontrolled environment. The equipment should be installed and operated with minimum distance 20cm between the radiator and your body.

Déclaration d'exposition aux radiations: Cet équipement est conforme aux limites d'exposition aux rayonnements ISED Canada établies pour un environnement non contrôlé. Cet équipement doit être installé et utilisé avec un minimum de 20cm de distance entre la source de rayonnement et votre corps.

The device for operation in the band 5 150-5 350 MHz is only for indoor use to reduce the potential for harmful interference to co-channel mobile satellite systems.

les dispositifs fonctionnant dans la bande 5 150-5 350 MHz sont réservés uniquement pour une utilisation à l'intérieur afin de réduire les risques de brouillage préjudiciable aux systèmes de satellites mobiles utilisant les mêmes canaux.

This device meets HAC and CS03 Part V.

"This device meets the applicable Innovation, Science and Economic Development Canada technical specifications. / Ce produit répond à la innovation, des sciences et de Développement économique Canada spécifications techniques applicables."

## EU Regulatory Information

Support Frequency Bands and Power:

- Bluetooth 2.4 GHz < 20 dBm;
- WLAN 2.4 GHz < 20 dBm;
- WLAN 5150-5250 MHz < 23 dBm;
- WLAN 5250-5350 MHz < 20 dBm;
- WLAN 5470-5725 MHz < 27 dBm;
- WLAN 5745-5825 MHz < 14 dBm;



BE	BG	CZ	DK	DE	EE	IE	EL
ES	FR	HR	IT	CY	LV	LT	LU
HU	MT	NL	AT	PL	PT	RO	SI
SK	FI	SE	NO	IS	LI	CH	TR

In all EU member states, operation of 5150-5350 MHz is restricted to indoor use only.

## Contact Information

YEALINK NETWORK TECHNOLOGY CO.,LTD.

No.666 Hu'an Rd,Huli District Xiamen City, Fujian, P.R.C

YEALINK (EUROPE) NETWORK TECHNOLOGY B.V.

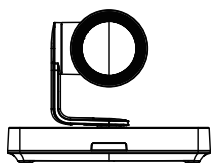
Sir Winston ChurchillIn 299 k, 2288DC Rijswijk

YEALINK (USA) NETWORK TECHNOLOGY CO., LTD.

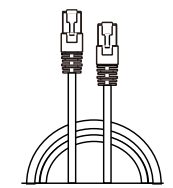
999 Peachtree Street Suite 2300, Fulton, Atlanta, GA, 30309, USA

Made in China

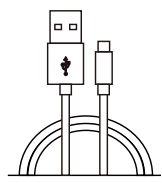
# 包装清单



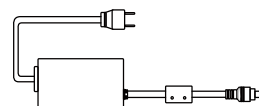
UVC85



(7.5m, 24.60ft)

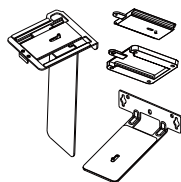


(2.5m, 8.20ft)



(3.5m, 11.48ft)

电源适配器  
(48V/0.7A)

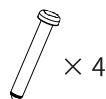


挂墙架



× 4

φ6 \* 30 mm, 白色, 聚酰胺



× 4

4\*30 FAHOZN3+ (+)



× 5

1/4" -20 UNC

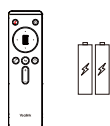


× 2

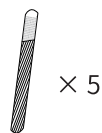
M3\*5.8KM0ZN3+



镜头保护盖



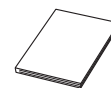
VCR20 遥控器



× 5

(20 \* 200 mm)

束线带



快速入门指南



1. 我们推荐使用由亿联提供或经亿联认可的配件。使用未经认可的第三方配件可能会导致性能的下降。

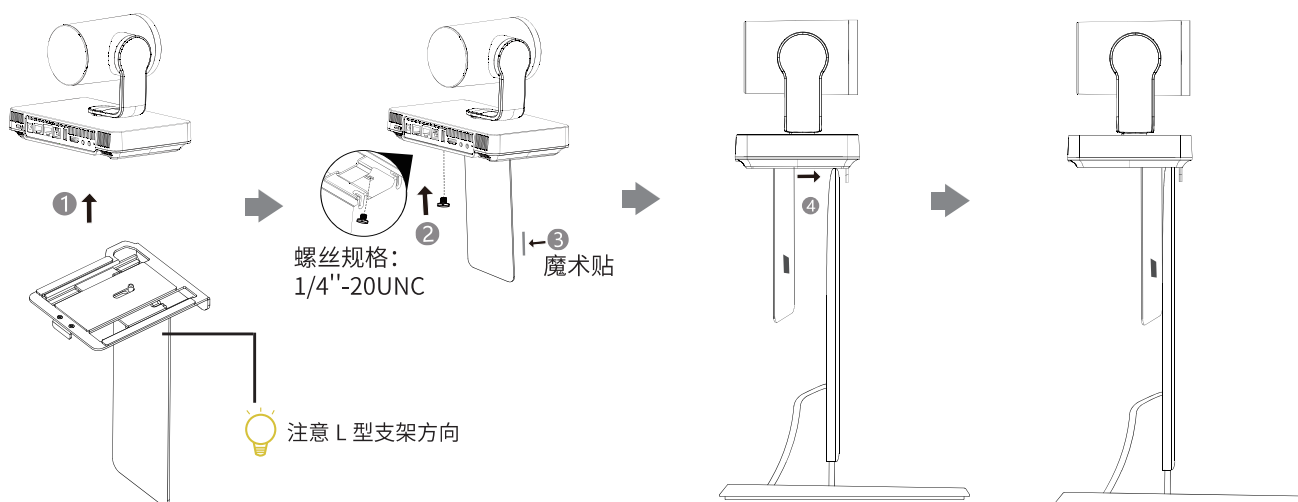
## 安装 UVC85

### • 平放安装

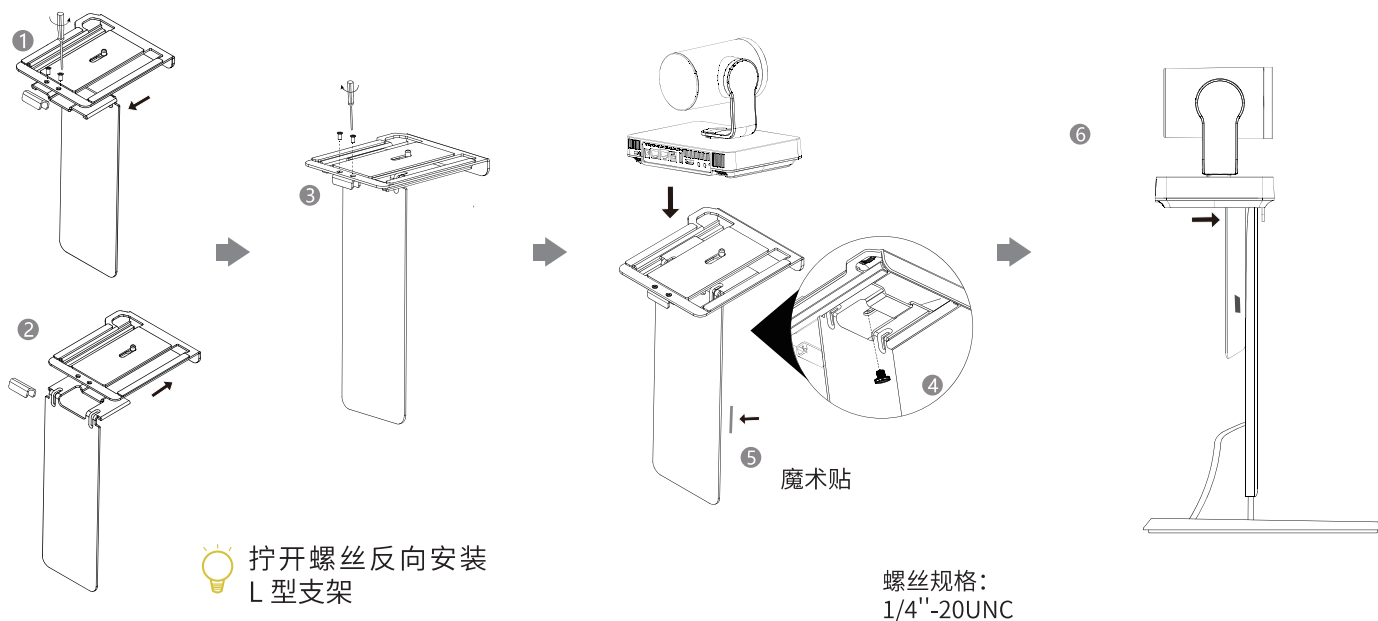
将终端摆放在水平桌面。如果桌面略有倾斜, 请保证倾斜角小于 5°, 以保证终端的摄像机云台正常运转。

### • 挂装

当电视厚度范围为 0-70mm 时, 进行以下步骤:

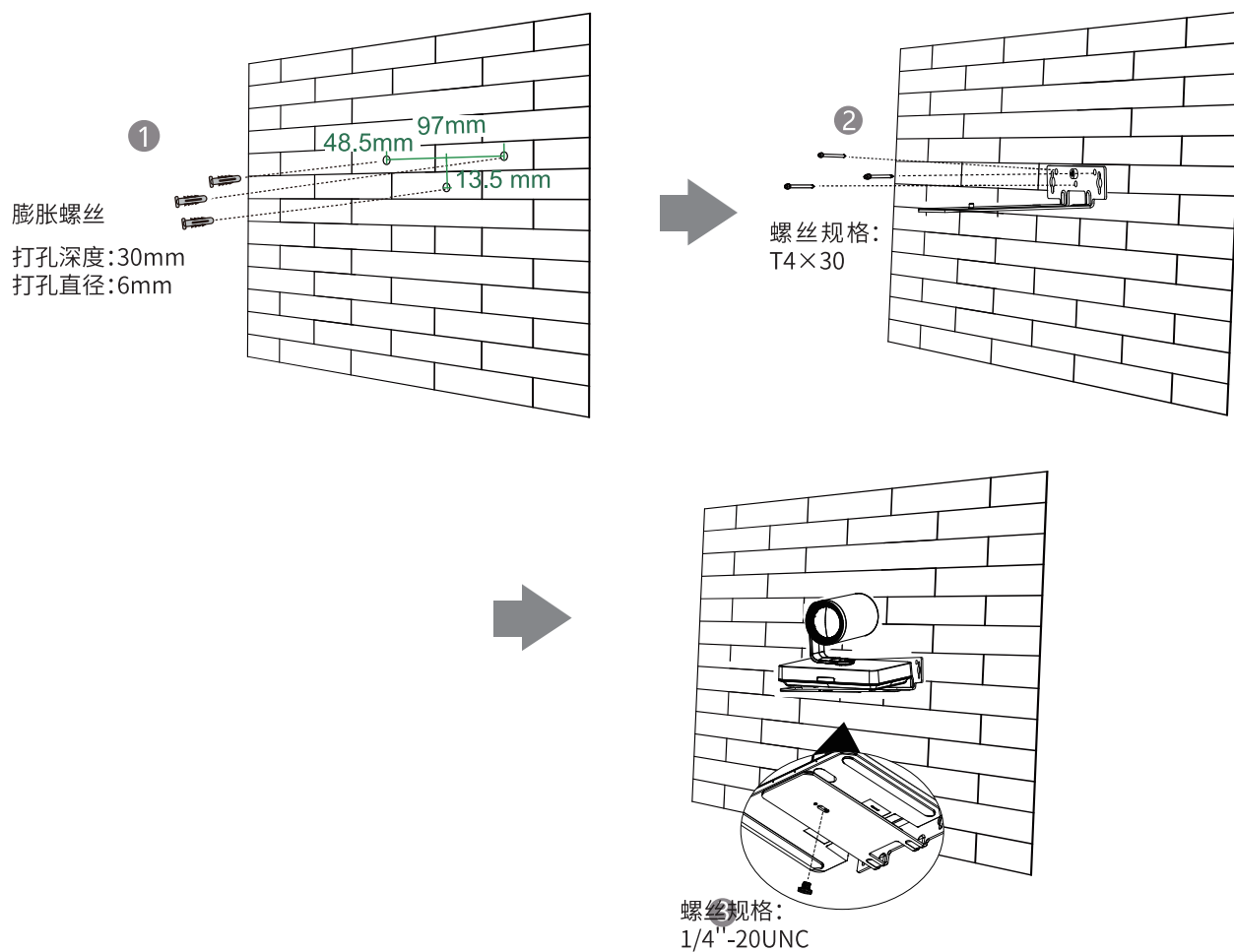


当电视厚度范围为 46-146mm 时, 进行以下步骤:



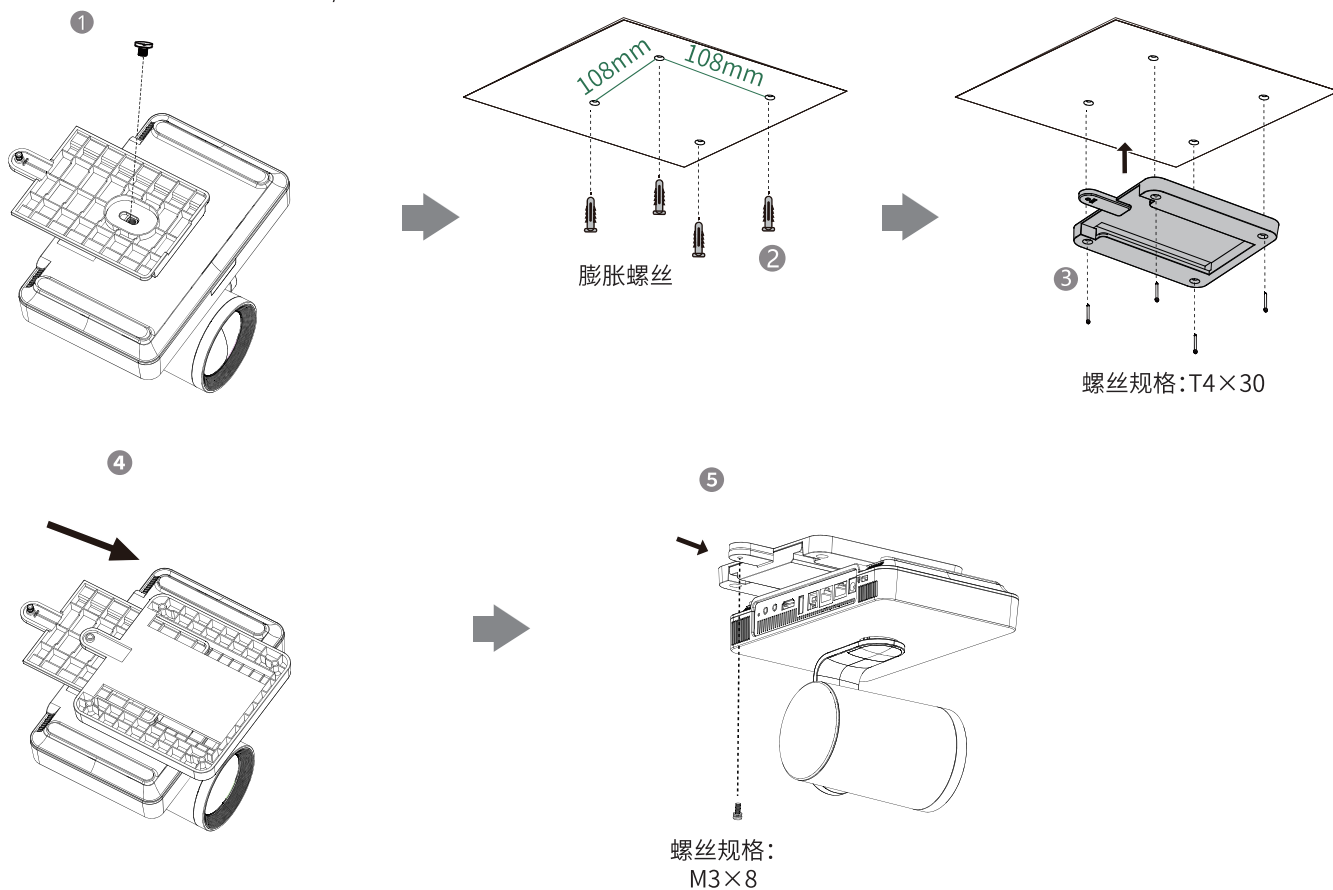
## • 墙装

建议安装高度为距地面 1.55 米 -1.85 米。



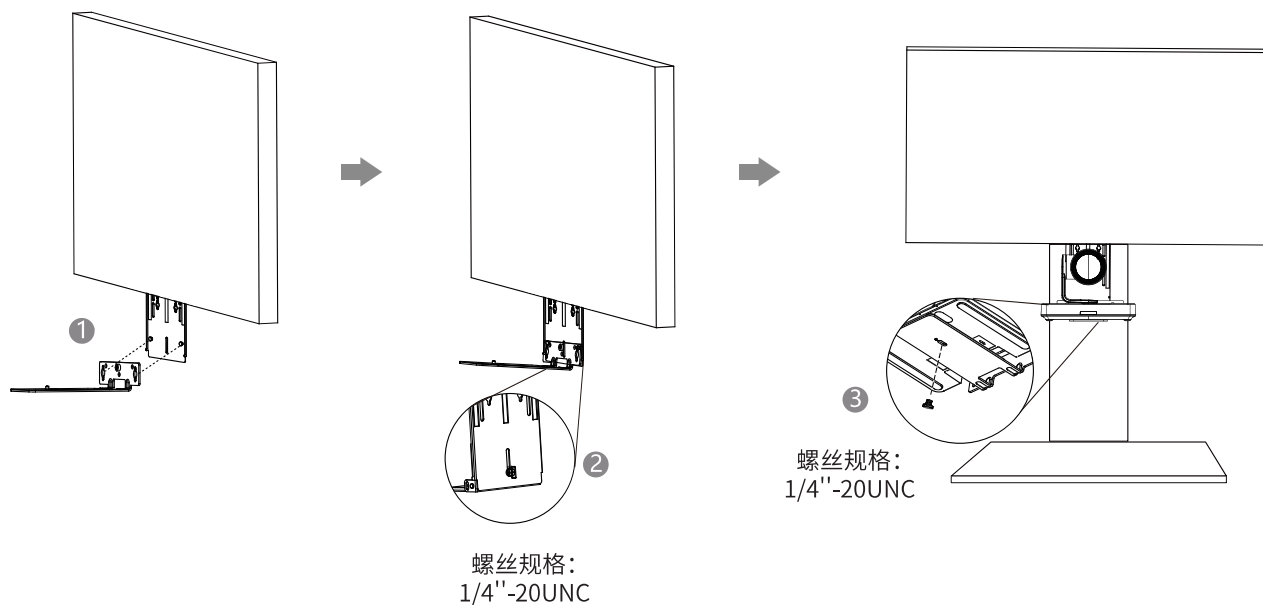
## • 吊装

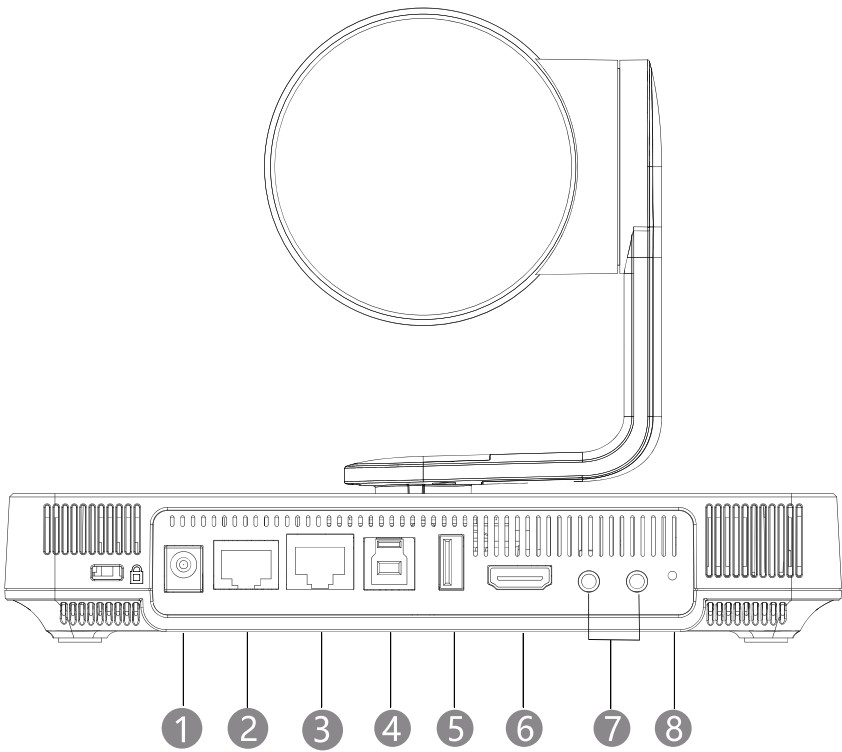
螺丝规格:1/4"-20UNC



## • 电视架安装

用户可以自行选购电视架。

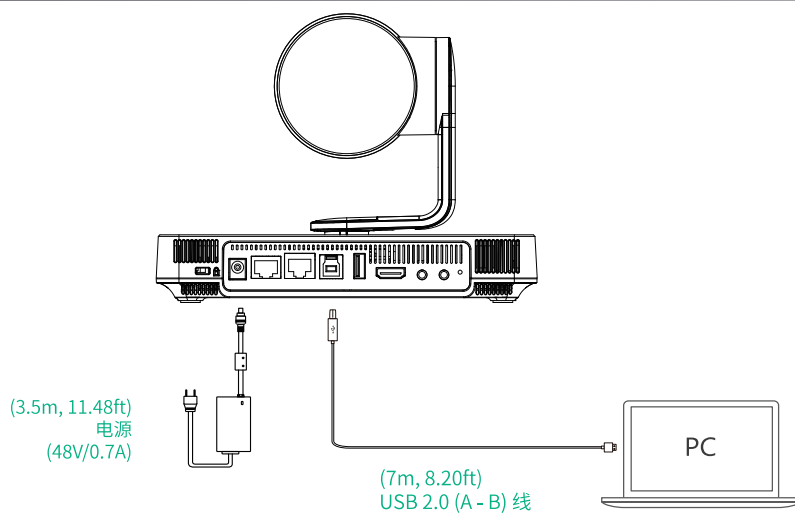




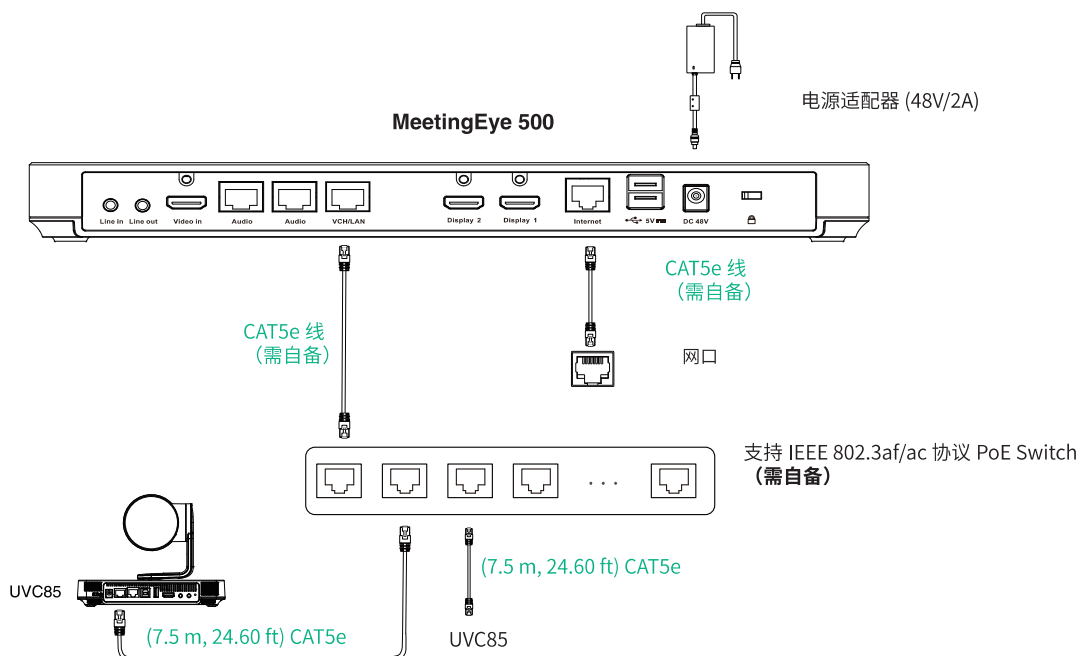
编号	项	功能说明
1	电源接口	连接电源适配器。
2	VCH 口	在 MVC 会议室系统中,连接音频设备 (例如:VCM35、CS10、CM20)。
3	网口	在视频会议系统中,连接终端 (例如:MeetingEye 500)。
4	PC 口	连接电脑作为视频输出。
5	USB-A 接口	用于连接 DD10 或 U 盘
6	HDMI 输出	处于 VCS 设备时,用于输出内容分享或摄像机画面 (不适用于 MVC 设备)。
7	音频线性输入 / 输出	通过 3.5mm 音频线接到第三方音频播放设备。
8	重置	重置设备到出厂设置。

# UVC85 连接

## • 连接电脑

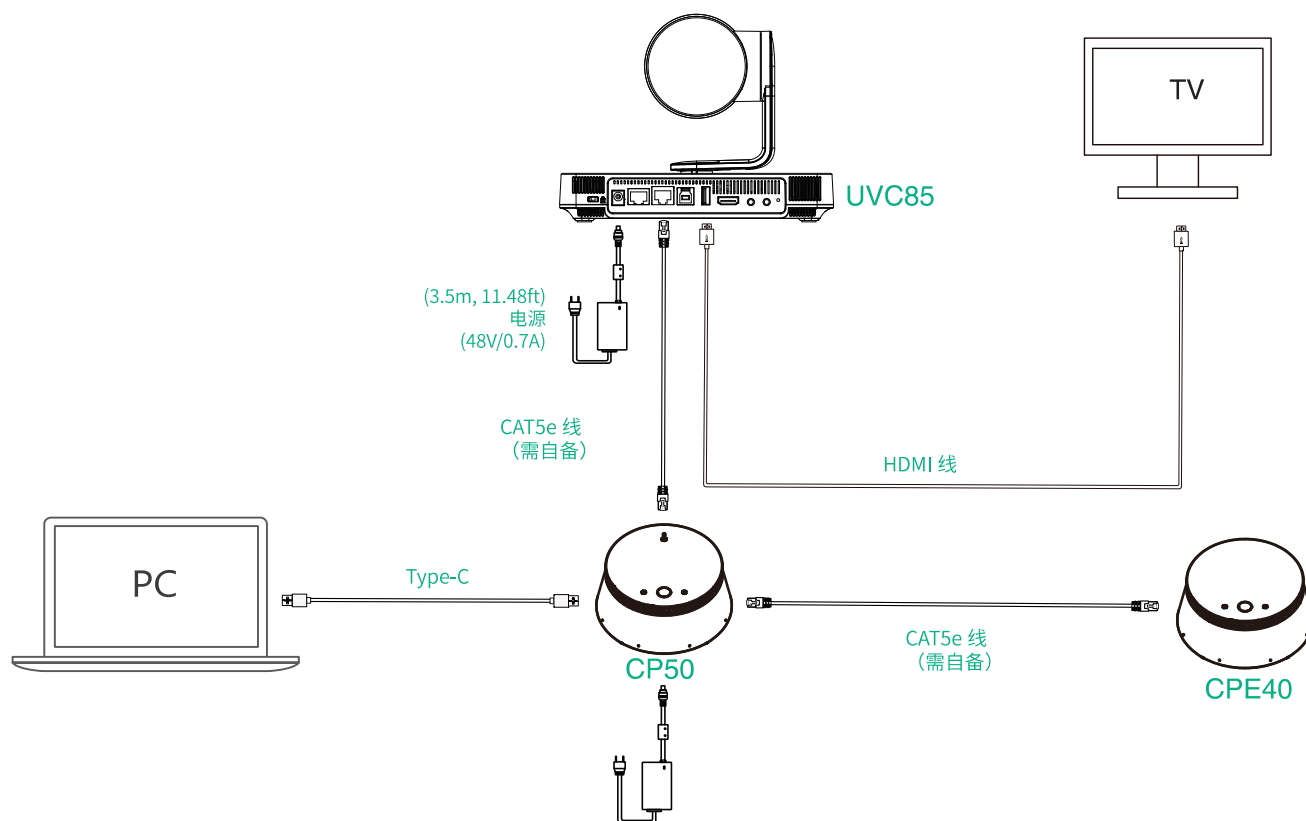


## • 连接会议电视终端



- 通过 PoE 交换机最多支持连接 2 个摄像头。
- 需自备配件要求：
  - » 以太网线：CAT5e 及以上规格网线。
  - » PoE 交换机：如果使用 PoE 连接摄像头，需使用 PoE+。

- USB-BYOD 连接

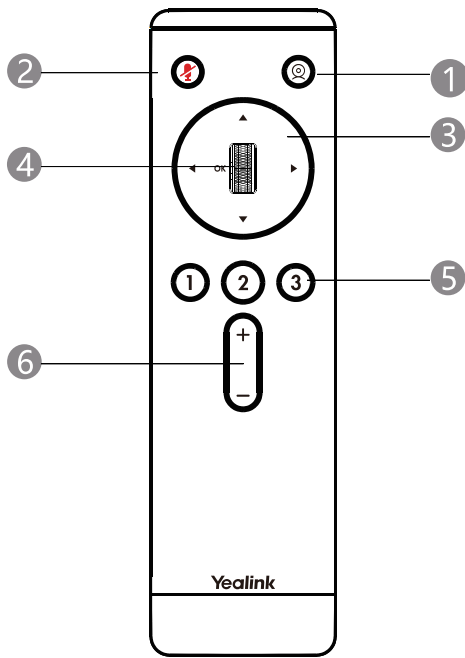


# 指示灯介绍

UVC85 指示灯介绍如下：

指示灯状态	功能说明
灭	UVC85 没有正确连接到 PC 上或未处于正常工作状态。
绿色常亮	UVC85 处于正常工作状态。
红色常亮	UVC85 处于休眠状态。
橙色闪烁	UVC85 固件更新中。
红色闪烁	UVC85 处于恢复模式。

# VCR20 遥控器



编号	项	功能说明
1	智能取景键	长按智能取景按键时,可切换智能取景模式(在自动框人像,语音追踪与关闭之间依次切换)。
2	静音键	将麦克风静音或取消静音。
3	导航键	调节摄像机的取景范围。
4	滚轮	向上滑动放大摄像机画面。 向下滑动放大摄像机画面。
5	预置位	长按数字键,新增 / 更新预设置位。 短按数字键,应用预设置位。
6	音量调节键	调节音量。



### **About Yealink**

Yealink (Stock Code: 300628) is a global-leading provider of Unified Communication & Collaboration Solutions specialized in video conferencing, voice communications, and collaboration, dedicated to helping every person and organization embrace the power of "Easy Collaboration, High Productivity".

With best-in-class quality, innovative technology, and user-friendly experiences, Yealink is one of the best providers in more than 140 countries and regions, ranks No.1 in the global market share of IP Phone, and is the Top 5 leader in the video conferencing market (Frost & Sullivan, 2021).

### **Technical Support**

Visit Yealink WIKI (<http://support.yealink.com/>) for firmware downloads, product documents, FAQ, and more. For better service, we sincerely recommend you to use Yealink Ticketing system (<https://ticket.yealink.com>) to submit all your technical issues.



YEALINK(XIAMEN) NETWORK TECHNOLOGY CO., LTD.  
Web: [www.yealink.com](http://www.yealink.com)  
Copyright©2024YEALINK(XIAMEN) NETWORK  
TECHNOLOGY CO., LTD.All rights reserved.