



MeetingBoard 65/75/86 Pro

Quick Start Guide V1.0



Please read this guide before installation to avoid unnecessary personal injury and damage to the endpoint.

1 Package Contents

The pictures of the endpoint and accessories in this guide are for reference only. Please use the accessories in the package, and follow the guide for installation. Yealink assumes no responsibility for any damage caused by improper installation methods.

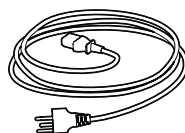
Standard Accessories



MeetingBoard 65/75/86 Pro

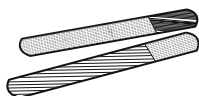


Pen x 4



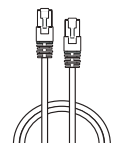
(3m, 9.84ft)

Power Cable (220V)



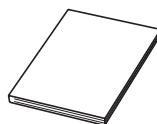
(20*200mm)

Cable Ties



(3m, 9.84ft)

CAT5e UTP (RJ45 - RJ45) Cable



Quick Start Guide

2 Endpoint Installation



To install the MeetingBoard, you need to purchase an additional wall-mounted bracket, floor-standing bracket, or wall-mounted bracket. Please refer to the **Quick Start Guide** of the corresponding accessory. For example, if you are using a floor stand for installation, please refer to **Quick Start Guide (Floor-Mounted)**.



Take and place all components gently to avoid damage.



MeetingBoard 65 Pro



MeetingBoard 75 Pro



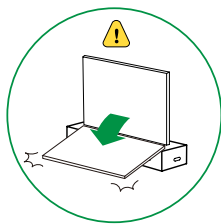
MeetingBoard 86 Pro

We recommend 2 people working together to mount MeetingBoard 65/75 Pro, 4 people working together to mount MeetingBoard 86 Pro.



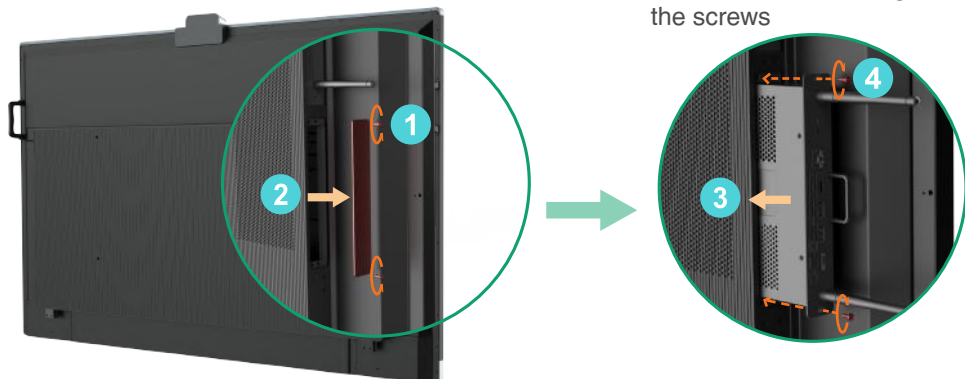
1 Install Windows OPS (Optional)

1. The endpoint has a built-in Android OS and supports installing OPS modules to use both Windows and Android OS.
2. Windows OPS is optional. If you have not purchased, skip this step.
3. When installing or uninstalling OPS, make sure that the endpoint is powered off. Otherwise, OPS may be abnormal.



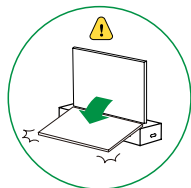
Remove the OPS cover

Insert the OPS and tighten the screws



2 Install MB-CAM Pro (Optional)

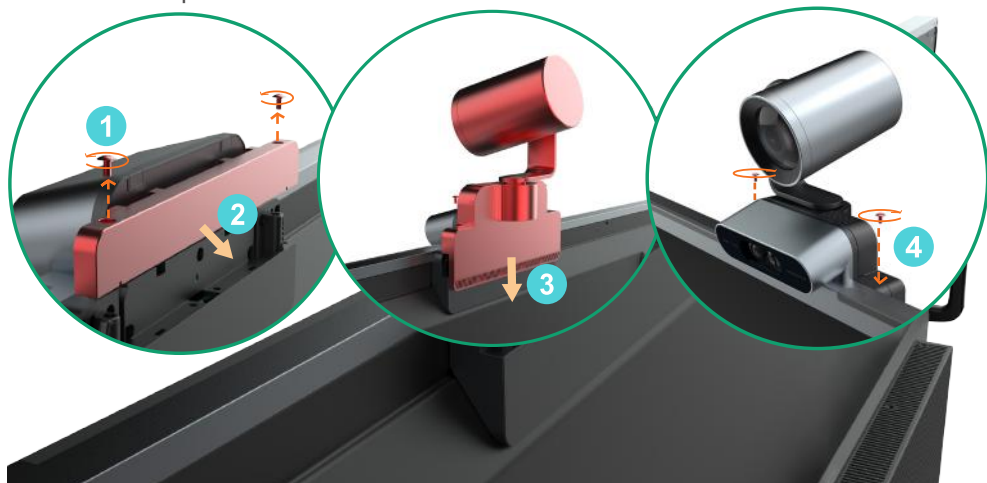
1. MB-CAM Pro is optional. If you have not purchased, skip this step.



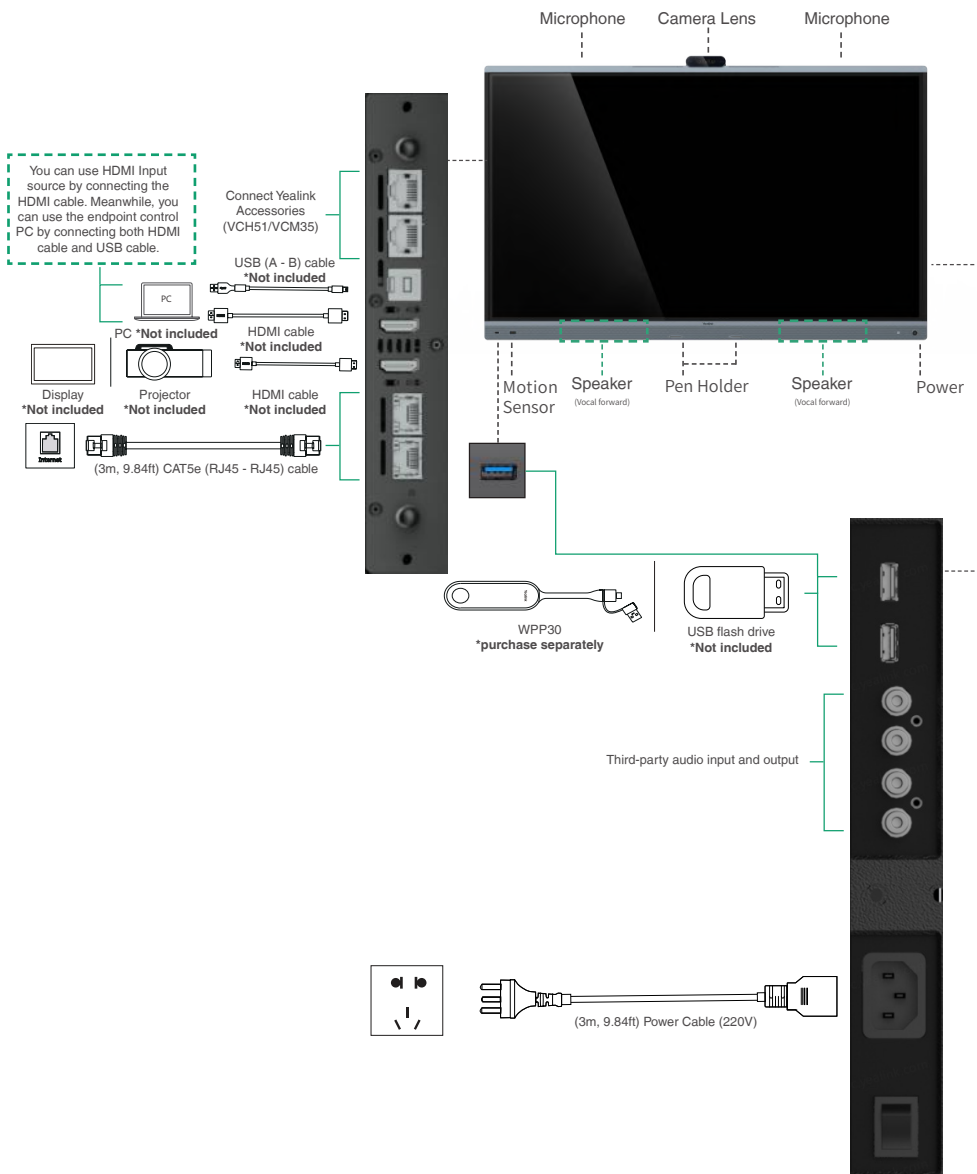
Remove the top cover of the endpoint

Insert camera

Mount screws



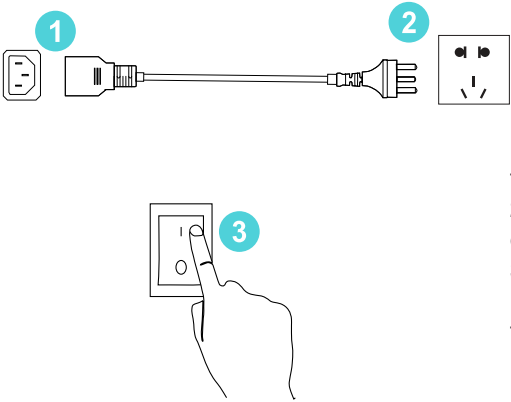
Hardware Component Instructions



Not included accessories requirements:

- Display: Resolution of 1080p or higher and with an HDMI port.
- PC: Equipped with HDMI or USB-C (support DP protocol) Port.
- USB flash drive: With USB-A port.
- HDMI: Standard HDMI cable.
- USB-B cable: USB 2.0 (A - B) cable.

4 Power on




1. Insert the end of the power cable into the power port of the endpoint.

2. Insert the power cord plug into the outlet.

3. Turn the rocker switch button on the right rear of the endpoint to "I" to turn on the endpoint.

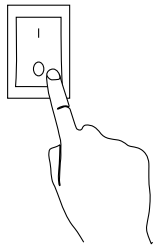
Upon first power-on of the endpoint, follow the on-screen setup wizard to configure language, time, network, etc., to initialize the configuration. The initialization operations vary with software versions.

 After the endpoint is started for the first time or restored to factory settings, go to settings on the touchscreen to configure the admin password (default password:0000).

5 LED Status

Status	Off	Solid red
Description	<ul style="list-style-type: none">• Power off• Unmute	Mute

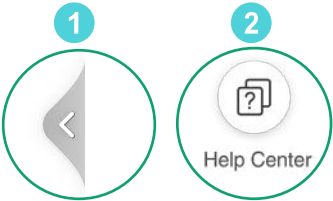
6 Power outage



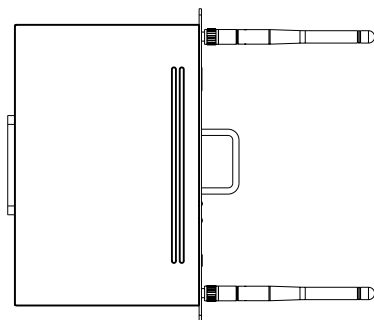
Turn the rocker switch button on the right rear of the endpoint to "O" to turn off the endpoint.

7 Help Center

On the MeetingBoard homepage, tap **Sidebar > Help Center** to view more function documents.



We recommended placement of the OPS antenna is as follows, with the highest signal strength:



HDMI, the HDMI logo, and High-Definition Multimedia Interface are trademarks or registered trademarks of HDMI Licensing LLC.

About Yealink

Yealink (Stock Code: 300628) is a global-leading provider of Unified Communication & Collaboration Solutions specialized in video conferencing, voice communications, and collaboration, dedicated to helping every person and organization embrace the power of "Easy Collaboration, High Productivity".

With best-in-class quality, innovative technology, and user-friendly experiences, Yealink is one of the best providers in more than 140 countries and regions, ranks No.1 in the global market share of IP Phone, and is the Top 5 leader in the video conferencing market (Frost & Sullivan, 2021).

Technical Support

Visit Yealink WIKI (<http://support.yealink.com/>) for firmware downloads, product documents, FAQ, and more. For better service, we sincerely recommend you to use Yealink Ticketing system (<https://ticket.yealink.com>) to submit all your technical issues.

Regulatory Notices

Operating Ambient Temperatures

- Operating temperature: +14 to 113°F (-10 to 45°C)
- Relative humidity: 5% to 90%, noncondensing
- Storage temperature: -22 to +158°F (-30 to +70°C)

Warranty

Our product warranty is limited only to the unit itself, when used normally in accordance with the operating instructions and the system environment. We are not liable for damage or loss resulting from the use of this product, or for any claim from a third party. We are not liable for problems with Yealink device arising from the use of this product; we are not liable for financial damages, lost profits, claims from third parties, etc., arising from the use of this product.

Explanation of the symbols

DC symbol

— is the DC voltage symbol.

WEEE Warning symbol



To avoid the potential effects on the environment and human health as a result of the presence of hazardous substances in electrical and electronic equipment, end users of electrical and electronic equipment should understand the meaning of the crossed-out wheeled bin symbol. Do not dispose of WEEE as unsorted municipal waste and have to collect such WEEE separately.

Restriction of Hazardous Substances Directive (RoHS)

This device complies with the requirements of the EU RoHS Directive. Statements of compliance can be obtained by contacting support@yealink.com.

Safety Instructions

Save these instructions. Read these safety instructions before use!

The following basic safety precautions should always be followed to reduce risk of fire, electrical shock, and other personal injury.



General Requirements

- Before you install and use the device, read the safety instructions carefully and observe the situation during operation.
- The main plug is used as disconnect device, the socket-outlet should be near the Switching Adapter and it should be easily accessible.
- During the process of storage, transportation, and operation, please always keep the device dry and clean, avoid collision and crash.
- Please attempt not to dismantle the device by yourself. In case of any discrepancy, please contact the appointed maintenance center for repair.
- Please refer to the relevant laws and statutes while using the device. Legal rights of others should be respected as well.



Environmental Requirements

- Do not cover ventilation openings, this equipment is not intended to be used on soft support.
- The marking information is located at the exterior of the bottom.
- Place the device at a well-ventilated place. Do not expose the device under direct sunlight.
- Keep the device dry and free of dusts.
- Do not place the device on or near any inflammable or fire-vulnerable object, such as rubber-made materials.
- Keep the device away from any heat source or bare fire, such as a candle or an electric heater.



Operating Requirements

- Do not let a child operate the device without guidance.
- Do not let a child play with the device or any accessory in case of accidental swallowing.
- Please use the accessories provided or authorized by the manufacturer only.
- Do not spill liquid of any kind on the product or use the equipment near water, for example, near a bathtub, washbowl, kitchen sink, wet basement or near a swimming pool.
- When there is smoke emitted from the device, or some abnormal noise or smell, disconnect the device immediately.
- Contact the specified maintenance center for repair.
- Do not insert any object into equipment slots that is not part of the product or auxiliary product.

This product qualifies for ENERGY STAR® in the default mode setting and this is the setting in which power savings will be achieved. Changing the default mode picture settings or enabling other features will increase power consumption that could exceed the limits necessary to qualify for ENERGY STAR® rating. Refer to EnergyStar.gov for more information on ENERGY STAR® program.

This product qualifies for ENERGY STAR® in the default mode setting and this is the setting in which power savings will be achieved. Changing the default mode picture settings or enabling other features will increase power consumption that could exceed the limits necessary to qualify for ENERGY STAR® rating. Refer to EnergyStar.gov for more information on ENERGY STAR® program.



Contact Information

YEALINK NETWORK TECHNOLOGY CO., LTD.

No.66 Hu'an Rd. Huli District Xiamen City, Fujian, P.R. C

YEALINK (EUROPE) NETWORK TECHNOLOGY B.V.

Strawinskylaan 3127, Arium Building, 8th floor, 1077ZX Amsterdam, The Netherlands

YEALINK (USA) NETWORK TECHNOLOGY CO., LTD.

999 Peachtree Street Suite 2300, Fulton, Atlanta, GA, 30309, USA

Made in China



Cleaning Requirements

- Use a piece of soft, dry and anti-static cloth to clean the device.

Troubleshooting

The usage environment is out of operating temperature range.

1. Use in the operating temperature range.

The cable between the unit and the Yealink device is connected incorrectly.

1. Connect the cable correctly.

Some dust, etc., may be in the port.

1. Clean the port.

Contact your dealer or authorized service facility for any further questions.

FCC CAUTION

This device complies with part 15 of the FCC Rules. Operation is subject to the following two conditions: (1) This device may not cause harmful interference, and (2) this device must accept any interference received, including interference that may cause undesired operation. Any changes or modifications not expressly approved by the party responsible for compliance could void the user's authority to operate the equipment.

Note: This equipment has been tested and found to comply with the limits for a Class B digital device, pursuant to part 15 of the FCC Rules. These limits are designed to provide reasonable protection against harmful interference in a residential installation. This equipment generates, uses and can radiate radio frequency energy and, if not installed and used in accordance with the instructions, may cause harmful interference to radio communications. However, there is no guarantee that interference will not occur in a particular installation. If this equipment does cause harmful interference to radio or television reception, which can be determined by turning the equipment off and on, the user is encouraged to try to correct the interference by one or more of the following measures:

-Reorient or relocate the receiving antenna.

-Increase the separation between the equipment and receiver.

-Connect the equipment into an outlet on a circuit different from that to which the receiver is connected.

-Consult the dealer or an experienced radio/TV technician for help.

This equipment complies with FCC radiation exposure limits set forth for an uncontrolled environment. This equipment should be installed and operated with minimum distance 20cm between the radiator your body.

The emissions of U-NII bands are maintained within the band of operation under all conditions of normal operation.

ISED WARNING

This device complies with Innovation, Science and Economic Development Canada licence-exempt RSS standard(s). Operation is subject to the following two conditions: (1) this device may not cause interference, and (2) this device must accept any interference, including interference that may cause undesired operation of the device.

Le présent appareil est conforme aux CNR d'Innovation, Sciences et Développement économique Canada applicables aux appareils radio exempts de licence. L'exploitation est autorisée aux deux conditions suivantes: (1) l'appareil ne doit pas produire de brouillage, et (2) l'utilisateur de l'appareil doit accepter tout brouillage radioélectrique subi, même si le brouillage est susceptible d'en compromettre le fonctionnement.

The device is compliance with RF exposure guidelines, users can obtain Canadian information on RF exposure and compliance. The minimum distance from body to use the device is 150mm.

Le présent appareil est conforme aux normes d'examen de ce matériel aux conformités ou aux limites d'intensité de champ RF, les utilisateurs peuvent sur l'exposition aux radiofréquences et la conformité et compliance d'acquiescer les informations correspondantes. La distance minimale du corps à utiliser le dispositif est de 20cm.

The device for operation in the band 5150-5250MHz is only for indoor use to reduce the potential for harmful interference to co-channel mobile satellite systems.

Operation of 5250-5350 MHz is restricted to indoor use only.

L'appareil destiné à fonctionner dans la bande 5150-5250MHz est uniquement destiné à une utilisation en intérieur afin de réduire le risque d'interférence nuisible aux systèmes mobiles par satellite utilisant le même canal.

Le fonctionnement de la bande 5250-5350MHz est limité à une utilisation en intérieur uniquement.

This radio transmitter (IC: 10741A-MB86PRO) has been approved by Innovation, Science and Economic Development Canada to operate with the antenna types listed below, with the maximum permissible gain indicated. Antenna types not included in this list have a gain greater than the maximum gain indicated for any type listed are strictly prohibited for use with this device.

Cet émetteur radio (IC: 10741A-MB86PRO) a été approuvé par Innovation, Sciences et Développement économique Canada pour fonctionner avec les types d'antennes répertoriés ci-dessous, avec le gain maximum autorisé indiqué. Les types d'antennes non inclus dans cette liste qui ont un gain maximum indiqué pour tout type répertorié sont strictement interdits pour une utilisation avec cet appareil.

Antenna/Antenne	Type/Taper	Antenna Gain Gain de l'antenne	Impedance/ Impédance	Frequency range/ Gamme de fréquences
Antenna 1	External antenna	2.4G:3.18dBi 5G:4.61dBi	50Ohm	2402-2484MHz/ 5150-5800MHz
Antenna 2	External antenna	2.4G:2.77dBi 5G:5.57dBi	50Ohm	2402-2484MHz / 5150-5800MHz

This Class B digital apparatus complies with Canadian ICES-003. Cet appareil numérique de la classe B est conforme à la norme NMB-003 du Canada.

Les communications effectuées au moyen de cet appareil ne sont pas nécessairement protégées des indiscretions.