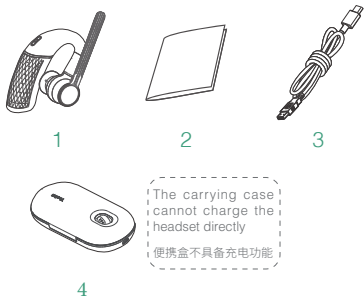


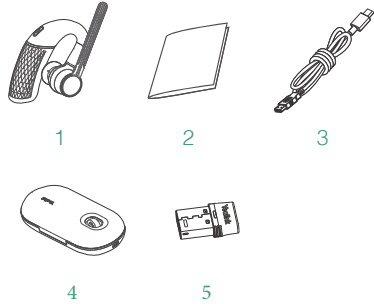
BH71
BH71 Pro

1 BH71 Package List
BH71 开箱清单



- 1 BHM711 Headset | BHM711 耳机
- 2 Quick Start Guide | 快速入门指南
- 3 USB 2.0 Cable (Type-C to Type-A) | USB 2.0 线 (Type-C 转 Type-A)
- 4 BHC71 Carrying Case | BHC71 便携盒

2 BH71 Pro Package List
BH71 Pro 开箱清单

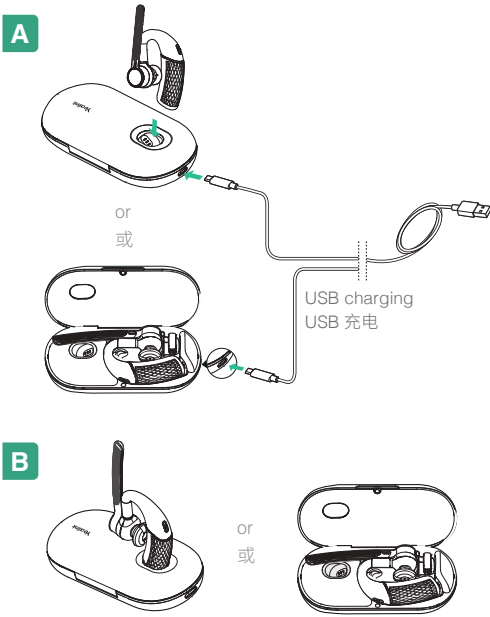


- 1 BHM711 Headset | BHM711 耳机
- 2 Quick Start Guide | 快速入门指南
- 3 USB 2.0 Cable (Type-C to Type-A) | USB 2.0 线 (Type-C 转 Type-A)
- 5 BHC71P Charging Case | BHC71P 充电盒
- 6 BT51A Dongle | BT51A 蓝牙适配器

Note: Some third-party accessories may be incompatible with the headset, so we strongly recommend that you use the Yealink accessories only.
注意: 部分第三方配件可能与耳机不兼容, 建议仅使用亿联自带的配件。

3 Charge Headset | 耳机充电

It takes approximately 90 minutes to fully charge the headset.
耳机充满电大约需要 90 分钟。



Note: The carrying case of BH71 cannot directly charge the headset and requires an external USB cable.
注意: BH71 的便携盒不具备充电功能, 需要外接 USB 线。

4 Charging Indicator - 充电指示灯

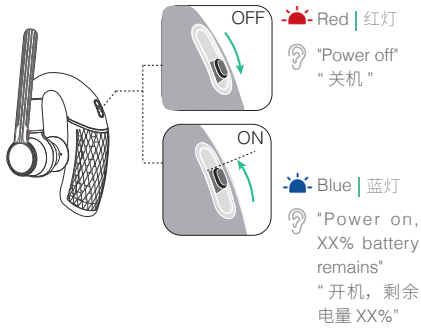


Safety Guide - 安全须知

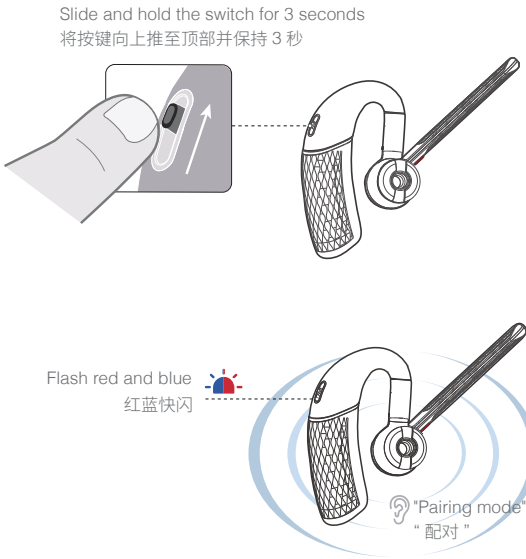
- 1. Do not disassemble the product by yourself or bring it near fire and water to avoid short circuit leakage or damage to the product.
- 2. Do not use the product in high temperature, humidity, and corrosive environment to avoid damaging the circuit and causing failure to charge or other failures.
- 3. Do not expose the product to corrosive liquids. Otherwise, it will cause severe damage.
- 4. Do not disassemble or re-equip the product for any reason to avoid secondary failure and burnout.
- 5. Do not place the product in an environment below -10°C or above 60°C.
- 6. Do not knock, throw or shake the product because rough methods will damage the internal circuit board structure. If your headset needs warranty service, the process is quick and easy. Please go to <https://ticket.yealink.com/page/headset/warranty-service.html> and submit RMA Claim to Yealink.

- 1. 请勿将本产品自行拆卸或投入火中、水中, 避免造成短路漏电或损坏产品。
 - 2. 请勿在高温、潮湿或腐蚀性环境下使用本产品, 避免损坏电路导致不能充电或其它故障。
 - 3. 请勿将产品接触腐蚀性液体, 否则会造成严重损坏。
 - 4. 请勿以任何理由拆卸或改装本产品, 避免造成二级故障及烧毁。
 - 5. 请勿将产品置于小于 -10°C 或者大于 60°C 的环境中。
 - 6. 请勿敲打、扔掷或强烈震动本产品, 粗暴方式会损坏内部电路板结构。
- 如果您需要进行 RMA 替换货服务, 您可以到 <https://ticket.yealink.com/page/headset/warranty-service.html> 提交硬件问题, 我们的技术支持团队会尽快为您受理。

5 Power on/off | 开关机



6 Pair and Connect | 配对和连接

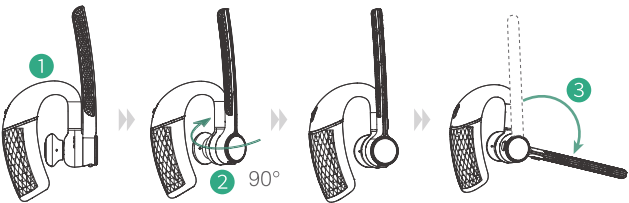


Note: The BT51A Bluetooth Dongle of BH71 Pro is pre-paired to the headset and ready for use. One headset can only connect to two devices at a time. The BT51A can only connect to one headset at a time.
注意: BH71 Pro 的 BT51A 蓝牙适配器跟耳机已预配对, 即插即用。一个耳机同时只能连接两个设备。一个 BT51A 一次只能连接一个耳机。

7 Fit the Headset | 佩戴

Right ear wearing | 右耳佩戴

- 1 Take out the headset, as shown in figure ❶. Twist the speaker to the left, and then rotate microphone boom down. 将耳机取出，如图❶所示。向左转动喇叭 90°，再向下旋转麦杆。

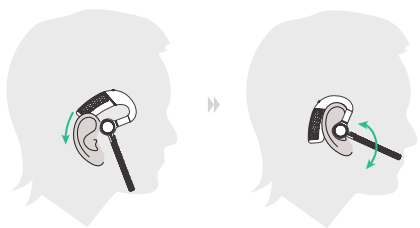


- 2 Before wearing, you can adjust the height of the speaker up or down to get the perfect fit for your ear. 在佩戴前，你可以调节伸缩杆高度，让耳机能更好地适应你的耳朵。



- 3 Put the eartip in your ear and slide headset over and behind your ear, then press gently toward your ear. Fine-tune the headset according to your own situation. 先将耳塞放入耳内，然后将耳机滑到耳后再轻轻按压，以稳定佩戴到耳朵上。最后再根据个人情况微调。

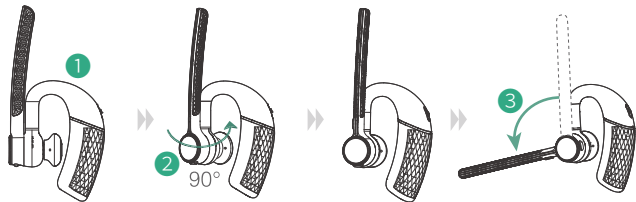
Note: Remove your eyeglasses before donning the headset for best fit.
注意：为了更好的适配，佩戴时建议将眼镜先摘下。



Note: Change the eartip for a better fit. Eartips with three size options — S/M/L (medium pre-installed).
注意：耳机配备了不同尺寸的耳塞，你可以选择一种合适的尺寸佩戴（耳机上预装了中号）。

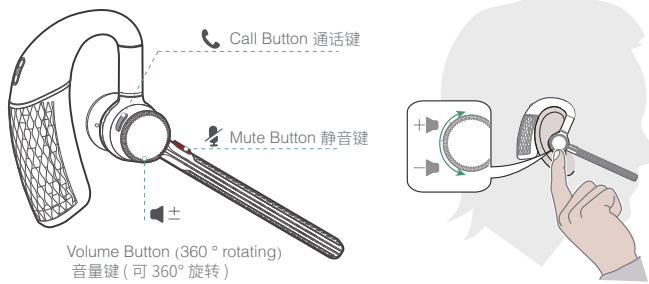
Left ear wearing | 左耳佩戴

- 1 Take out the headset, as shown in figure ❶. Twist the speaker to the right, and then rotate microphone boom down. 将耳机取出，如图❶所示。向右边转动喇叭 90°，再向下旋转麦杆。



- 2 For wearing methods, please refer to steps 2 and 3 of the right ear wearing. 佩戴方式请参考右耳佩戴的步骤 2 和步骤 3。

8 Call Control | 通话控制

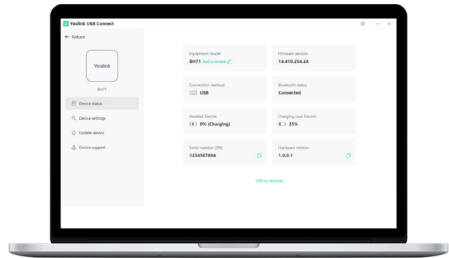


- Accept 接听 (X 1)
- Reject 拒接 (It is not applicable to Teams | Teams 版本不支持) (X 2)
- End 挂断 (X 1)
- In the idle status, invoke the Teams client 空闲状态，调出 Teams 客户端 (X 1)
- In the idle status, activate Cortana (requires Microsoft's support) 空闲状态，激活 Cortana (需要微软支持) (X 2s)

9 Software Management | 软件管理

A Yealink USB Connect (电脑端)

Download it from the Yealink website <https://www.yealink.com/product/yuc>.
从亿联网站 <https://www.yealink.com/product/yuc> 下载。



Note: It needs to be used with Yealink USB Connect of version 0.35.x.x or later.
注意：需要配合 Yealink USB Connect 0.35.x.x 或更高版本使用。

B Yealink Connect App (移动端)

Download the Yealink Connect App from IOS App Store or Android App Store.
从 IOS 系统 或 Android 系统的应用商店下载 Yealink Connect App。



Apple and the Apple logo are trademarks of Apple Inc.
Apple 和 Apple 标志是 Apple Inc. 的商标。

Regulatory Notices

Operating Ambient Temperatures

- Operating temperature: 0 °C to +40 °C (+32 °F to +104 °F)
- Relative humidity: 5% to 90%, noncondensing
- Storage temperature: -30 °C to +70 °C (-22 to +158 °F)

Warranty

Our product warranty is limited only to the unit itself, when used normally in accordance with the operating instructions and the system environment. We are not liable for damage or loss resulting from the use of this product, or for any claim from a third party. We are not liable for problems with Yealink device arising from the use of this product; we are not liable for financial damages, lost profits, claims from third parties, etc., arising from the use of this product.

Explanation of the symbols

- DC symbol
- is the DC voltage symbol.
- WEEE Warning symbol

To avoid the potential effects on the environment and human health as a result of the presence of hazardous substances in electrical and electronic equipment, end users of electrical and electronic equipment should understand the meaning of the crossed-out wheeled bin symbol. Do not dispose of WEEE as unsorted municipal waste and have to collect such WEEE separately. Restriction of Hazardous Substances Directive (RoHS) This device complies with the requirements of the EU RoHS Directive. Statements of compliance can be obtained by contacting support@yealink.com.

Safety Instructions

Save these instructions. Read these safety instructions before use!

General Requirements

- Before you install and use the device, read the safety instructions carefully and observe the situation during operation.
- During the process of storage, transportation, and operation, please always keep the device dry and clean, avoid collision and crash.
- Please attempt not to dismantle the device by yourself. In case of any discrepancy, please contact the appointed maintenance center for repair.
- Please refer to the relevant laws and statutes while using the device. Legal rights of others should be respected as well.

Environmental Requirements

- Place the device at a well-ventilated place. Do not expose the device under direct sunlight.
- Keep the device dry and free of dust.
- Do not place the device on or near any inflammable or fire-vulnerable object, such as rubber-made materials.
- Keep the device away from any heat source or bare fire, such as a candle or an electric heater.

Operating Requirements

- Do not let a child operate the device without guidance.
- Do not let a child play with the device or any accessory in case of accidental swallowing.
- Please use the accessories provided or authorized by the manufacturer only.
- The power supply of the device shall meet the requirements of the input voltage of the device. Please use the provided surge protection power socket only.
- Before plugging or unplugging any cable, make sure that your hands are completely dry.
- Do not spill liquid of any kind on the product or use the equipment near water, for example, near a bathtub, washbowl, kitchen sink, wet station or near a swimming pool.
- During a thunderstorm, stop using the device and disconnect it from the power supply. Unplug the power plug and the Asymmetric Digital Subscriber Line (ADSL) twisted pair (the radio frequency cable) to avoid lightning strike.
- If the device is left unused for a rather long time, disconnect it from the power supply and unplug the power plug.
- When there is smoke emitted from the device, or some abnormal noise or smell, disconnect the device from the power supply, and unplug the power plug immediately.
- Contact the specified maintenance center for repair.
- Do not insert any object into equipment slots that is not part of the product or auxiliary product.
- Before connecting a cable, connect the grounding cable of the device first. Do not disconnect the grounding cable until you disconnect all other cables.

Battery Requirements

- Do not immerse the battery into water, which could short-circuit and damage the battery.
- Do not expose the battery to an open flame or leave the battery where it could be subjected to extremely high temperatures, which could cause the battery to explode.
- Do power the handset off before removing the battery.
- Do not try to use the battery for the power supply of any device other than this handset.
- Do not open or mutilate the battery, released electrolyte is corrosive and may cause damage to your eyes or skin.
- Use only the rechargeable battery pack delivered with the handset or those rechargeable battery packs expressly recommended by Yealink.

- Defective or exhausted battery should never be disposed of as municipal waste. Return old battery to the battery supplier, a licensed battery dealer or a designated collection facility.

Cleaning Requirements

- Before cleaning the device, disconnect it from the power supply.
- Use a piece of soft, dry and anti-static cloth to clean the device.
- Keep the power plug clean and dry.

Troubleshooting

The unit cannot supply power to Yealink device.

There is a bad connection with the plug.

- Clean the plug with a dry cloth.
- Connect it to another wall outlet.

The usage environment is out of operating temperature range.

The cable between the unit and the Yealink device is connected incorrectly.

- Connect the cable correctly.
- You cannot connect the cable properly.
- You may have connected a wrong Yealink device.
- Use the correct power supply.
- Some dust, etc., may be in the port.
- Clean the port.
- Contact your dealer or authorized service facility for any further questions.

FCC CAUTION

This device complies with part 15 of the FCC Rules. Operation is subject to the following two conditions: (1) This device may not cause harmful interference, and (2) this device must accept any interference received, including interference that may cause undesired operation. Any changes or modifications not expressly approved by the party responsible for compliance could void the user's authority to operate the equipment.

Note: This equipment has been tested and found to comply with the limits for a Class B digital device, pursuant to part 15 of the FCC Rules. These limits are designed to provide reasonable protection against harmful interference in a residential installation. This equipment generates, uses and can radiate radio frequency energy and, if not installed and used in accordance with the instructions, may cause harmful interference to radio communications. However, there is no guarantee that interference will not occur in a particular installation. If this equipment does cause harmful interference to radio or television reception, which can be determined by turning the equipment off and on, the user is encouraged to try to correct the interference by one or more of the following measures:

- Reorient or relocate the receiving antenna.
- Increase the separation between the equipment and receiver.
- Connect the equipment into an outlet on a circuit different from that to which the receiver is connected.
- Consult the dealer or an experienced radio/TV technician for help.

The equipment complies with FCC radiation exposure limits set forth for an uncontrolled environment. This transmitter must not be co-located or operating in conjunction with any other antenna or transmitter.

ISED WARNING

This device complies with Innovation, Science and Economic Development Canada licence-exempt RSS standard(s). Operation is subject to the following two conditions: (1) this device may not cause interference, and (2) this device must accept any interference, including interference that may cause undesired operation of the device.

Le présent appareil est conforme aux CNR d'Industrie Canada applicables aux appareils radio exempts de licence. L'exploitation est autorisée aux deux conditions suivantes : (1) l'appareil ne doit pas produire de brouillage, et (2) l'utilisateur de l'appareil doit accepter tout brouillage radioélectrique subi, même si le brouillage est susceptible d'en compromettre le fonctionnement.

This Class B digital apparatus complies with Canadian ICES-003. Cet appareil numérique de la classe B est conforme à la norme NMB-003 du Canada.

The device is compliance with RF exposure guidelines, users can obtain Canadian information on RF exposure and compliance.

L'appareil est conforme aux directives d'exposition aux RF, les utilisateurs peuvent obtenir des informations canadiennes sur l'exposition aux RF et la conformité.

Les communications effectuées au moyen de cet appareil ne sont pas nécessairement protégées des indiscretions.

EU Regulatory Information

Support Frequency Bands and Power:

Bluetooth 2.4GHz<20dBm

Contact Information

YEALINK NETWORK TECHNOLOGY CO., LTD.
No.666 Hu'an Rd. Huli District Xiamen City, Fujian, P.R. China
YEALINK (EUROPE) NETWORK TECHNOLOGY B.V.
Strawinskylaan 3127, Atrium Building, 8th floor, 1077ZX
Amsterdam, The Netherlands
YEALINK (USA) NETWORK TECHNOLOGY CO., LTD.
999 Peachtree Street Suite 2300, Fulton, Atlanta, GA, 30309, USA
Made in China

NEED MORE HEIP?

Technical support
<https://ticket.yealink.com>

FAQ & User manual
<http://support.yealink.com>

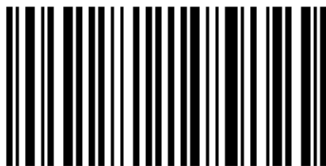
Yealink Bluetooth Headset

Model: BHM711
Input: 5V=0.2A

FCC ID: T2C-BHM711V1
IC: 10741A-BHM711V1
HVIN: BHM711V1

20

FC CE UK CA



430104002184