


TEXT COLOR: BLACK  
BACKGROUND COLOR: WHITE

SCALE: 1/1

25.4 mm

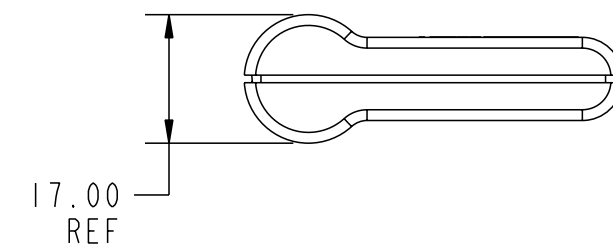
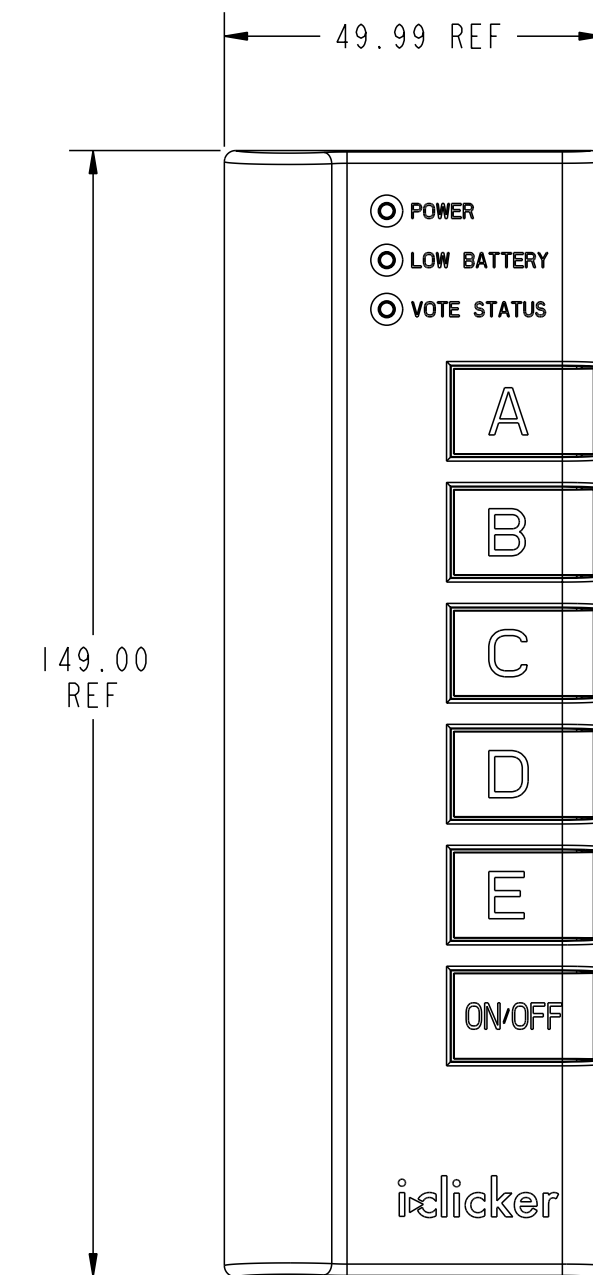
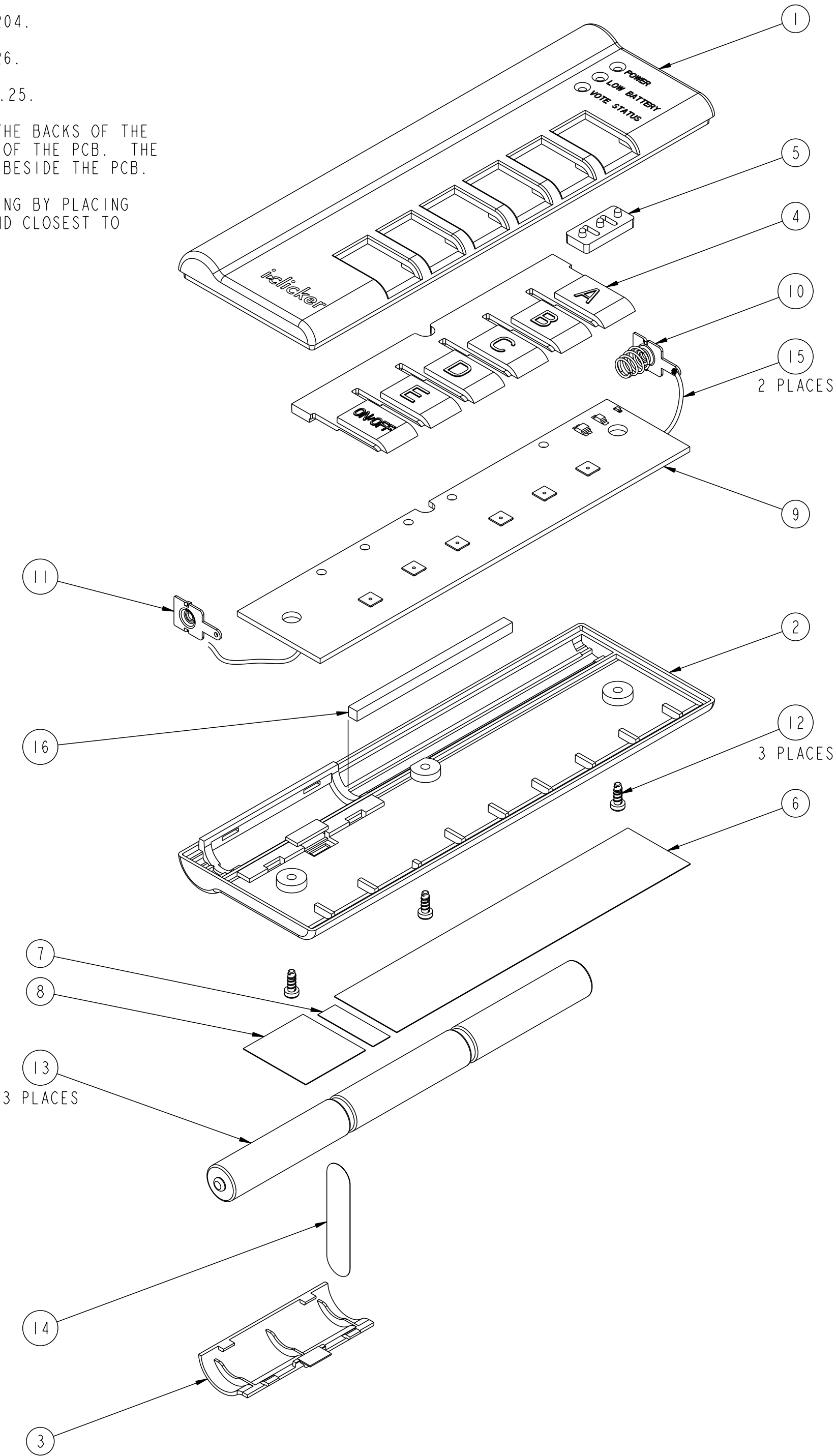


NOTE: OUTLINE BORDERS ARE FOR ALIGNMENT/REGISTRATION ONLY AND SHOULD NOT BE PRINTED.

 © ALL RIGHTS RESERVED			PROPRIETARY USE PURSUANT TO COMPANY INSTRUCTIONS
TITLE: INSTRUCTION LABEL GRAPHICS			SCALE: AS SHOWN
DATE: 5/10/06	SHEET: 1 OF 1	REVISION: 2b	ARTMASTER NO. 103M31

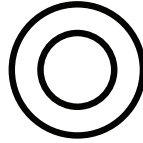
NOTES:

1. DIMENSIONS ARE IN MILLIMETERS.
2. KEYSTONE: ELECTRONICS, PART NO. 5204.
3. KEYSTONE ELECTRONICS, PART NO. 5226.
3. SCREWS TORQUE SHALL BE 3 IN-LBS  $\pm$ .25.
4. BATTERY LEADS SHALL BE SOLDER TO THE BACKS OF THE BATTERY SPRINGS AND TO THE BOTTOM OF THE PCB. THE LEADS SHALL ALSO BE DRESSED ALONG BESIDE THE PCB.
5. ADHERE BATTERY FOAM TO LOWER HOUSING BY PLACING BETWEEN 2 RIBS AND ALIGNING THE END CLOSEST TO BATTERY COMPARTMENT.



16	103M34	BATTERY FOAM	1	6
15	103M33	BATTERY LEAD	2	5
14	103M32	BATTERY SEPARATOR	1	
13		BATTERY (AAA-SIZE)	3	
12		SCREW, #2 x 1/4" THREAD FORMING	3	4
11		BATTERY CONTACT	1	3
10		BATTERY SPRING	1	2
9	103E08	PCB ASSEMBLY, REMOTE	1	
8	103M35	FCC LABEL	1	
7	103M28	SERIAL NUMBER LABEL	1	
6	103M27	INSTRUCTION LABEL	1	
5	103M26	LIGHTPIPE	1	
4	103M25	BUTTON ARRAY	1	
3	103M24	BATTERY DOOR	1	
2	103M23	LOWER HOUSING	1	
1	103M22	UPPER HOUSING	1	
ITEM	NUMBER	DESCRIPTION	QTY	NOTE
THIRD ANGLE PROJECTION		Indesign		
FEATURES AND DIMENSIONS NOT SHOWN SHALL BE VERIFIED IN THE DATABASE. DRAWING SHOULD NOT BE SCALED.		PROPRIETARY USE PURSUANT TO COMPANY INSTRUCTIONS		
DRAWING TITLE: REMOTE ASSEMBLY		PROJECT NAME:		
ENGR: INDESIGN	SIZE C	DATE 5/10/06	DRAWING NO. 103M21	REV 4
DRAWN: INDESIGN	SCALE: 1/1 & AS SHOWN SHEET 1 OF 1			

IC: 6495A-RLR13  
FCC ID: T24-RLR13



This device complies with part 15 of the FCC rules. Operation is subject to the following two conditions: (1) This device may not cause harmful interference, and (2) This device must accept any interference received, including interference that may cause undesired operation.

SCALE: 4/1




SCALE: 1/1

25.4 mm



NOTE: OUTLINE BORDERS ARE FOR ALIGNMENT/REGISTRATION ONLY AND SHOULD NOT BE PRINTED.

 © ALL RIGHTS RESERVED			PROPRIETARY USE PURSUANT TO COMPANY INSTRUCTIONS
TITLE: FCC GRAPHICS			SCALE: AS SHOWN
DATE: 5/15/06	SHEET: 1 OF 1	REVISION: 3	ARTMASTER NO. 103M36