

TABLE OF CONTENTS

PAGE 1: Table of Contents, Chrysler 300C SRT 8 Features.

PAGE 2: Chrysler 300C SRT 8 Checklist.

PAGES 3-4: Charging & Installing the 9.6V 'C' size Ni-Cd Battery Pack.

PAGE 5: Controller Battery, Controller Antenna & Vehicle Antenna Installation.

PAGE 6: Power On/Off Switch, Band A, B, C, D & Alignment Control.

PAGE 7: Operating the Vehicle, Proper Use, Precautions & Care.

PAGE 8: Please Note and Troubleshooting.

PAGE 9: Caution, Warning & Attention Parents.

300C SRT8 FEATURES



Chrysler 300C SRT 8 1:5 Scale



Comes in 2 Different Styles
Which Are Detachable

300C SRT8 CHECKLIST

IMPORTANT: THE INCLUDED 9.6V Ni-Cd BATTERY PACK IS NOT CHARGED PRIOR TO SHIPMENT AND MUST BE CHARGED BEFORE USE.

To prevent damage, the contents of the package that are listed below have been packed in the tray and may be out of plain sight. Please remove all contents from the tray.

VEHICLE



9.6V Ni-Cd BATTERY PACK



CONTROLLER



TRANSFORMER



9V BATTERY (1 9V battery included)



1 VEHICLE ANTENNA TUBE



CONTROLLER ANTENNA

CHARGING THE BATTERY PACK

IMPORTANT: The included 9.6V Ni-Cd Battery is not charged, please charge prior to use.



1. First, plug the Transformer into a Standard 110/120V Household electrical outlet. Then, insert the connecting plug into the opening located on the side of the Charger.

2. Plug the battery wire connector and transformer wire connector together.

3. Charge the battery pack for 5 hours. The battery pack will feel warm. In this condition, the battery is fully charged.

NOTE: Leaving the Battery in the Charger will not increase the life of your battery.

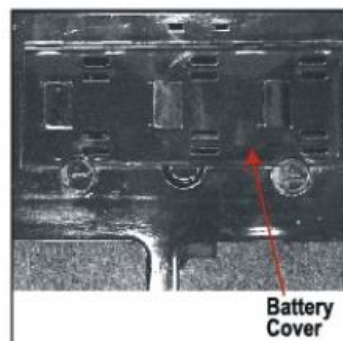
4. After charging and during use, the Battery Pack will become warm.

IMPORTANT: Please allow the Battery Pack to cool prior to recharging. Charging before doing so will greatly reduce the life of the Battery.

INSTALLING THE BATTERY PACK

1. Carefully turn the vehicle on its side and locate the battery compartment found on the bottom of the vehicle chassis.

2. Rotate the Battery Compartment Lock so that it is in the "open" position.



Open the Battery Compartment cover



Rotate the Lock to the "Open" Position

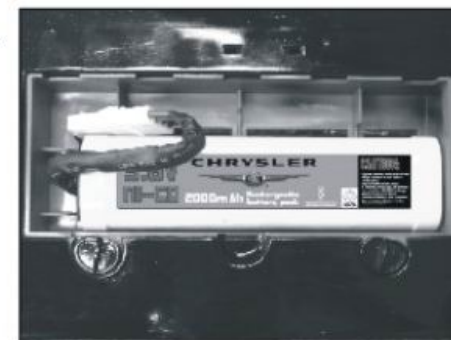


3. Connect the wire plug on the battery to the wire plug on the vehicle.

4. Place the wire plug into the gap in the battery compartment.

5. Insert the 9.6V Ni-Cd battery to the compartment.

6. Replace the battery compartment cover and rotate the battery compartment lock so that it is in the locked position.



5 **CONTROLLER BATTERY INSTALLATION**

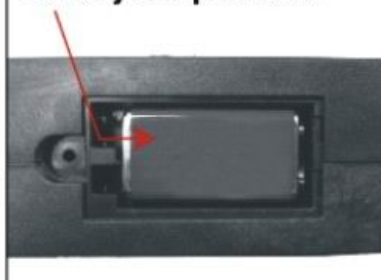
1. On the bottom of the Controller, locate the Battery Compartment.
2. Pull off the Battery Compartment Cover.
3. Insert 1 "9V" size batteries.
Make sure the plus (+) and minus (-) markings on the battery match up with the plus (+) and minus (-) markings inside the Battery Compartment.
4. Replace the Battery Compartment Cover

CAUTIONS

1. Do not mix old and new batteries.
2. Do not mix alkaline, standard or rechargeable batteries.
3. Use Alkaline batteries only.

NOTE: Replace with Alkaline Batteries for longest life and best performance. Remember to take out all the batteries from the vehicle and the controller if the vehicle will not be used for a long time.

Battery Compartment



6 **POWER ON/OFF BAND A,B,C,D**

Power On/Off



Band A,B,C,D

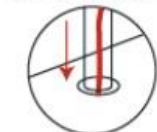
Ensure that the band selector switch on remote & car are set to the same alphabet letter.
(The car has 4 selectable bandwidths)

VEHICLE ANTENNA CONTROLLER ANTENNA INSTALLATION

1. On the top of the vehicle, you will find an opening where the vehicle antenna wire is located.

2. Slide the vehicle antenna wire through the vehicle antenna tube. The tube will fit inside the opening found on the top of the car.

4. Insert the transmitter antenna into the transmitter and screw in tightly (clockwise).

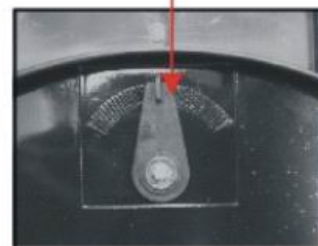


3. Tying a simple knot in the antenna wire will hold the vehicle antenna tube in place.



ALIGNMENT CONTROL SWITCH

Alignment Control Dial



Alignment Control

The Alignment Control Dial is located between the front wheels. If the vehicle begins to pull to the left, adjust the trim control towards the "R" marking. If the vehicle pulls to the right while driving, adjust the trim control towards the "L" markings.

OPERATING THE VEHICLE



PROPER USE, PRECAUTIONS & CARE

1.The Toy can perform better on a vinyl floor. Thick carpets are not recommended since carpet does not provide suitable traction and lint from the carpet may damage vehicle.

2.Operating multiple vehicles with the same frequency in close proximity will cause interference and poor performance.

FCC CAUTION:

The manufacturer is not responsible for the radio interference caused by unauthorized frequency modification to this equipment. Such modifications could void the user's authority to operate the equipment.

3.Works best away from high voltage power lines, large buildings and walls.

4.Hold the controller antenna up for the best performance.

5.When the product does not respond, slows down, or loses range, replace the batteries.

6.This product is not recommended for use on loose dirt or wet surface.

7.Do not immerse in water.

PLEASE NOTE & TROUBLESHOOTING

PLEASE NOTE:

This equipment has been tested and found to comply with the limits for a Class B digital device, pursuant to Part 15 of the FCC Rules. These limits are designed to provide reasonable protection against harmful interference in a residential installation. This equipment generates, uses and can radiate radio frequency energy and, if not installed and used in accordance with the instructions, may cause harmful interference to radio communications. However, there is no guarantee that interference will not occur in a particular installation. If this equipment does cause harmful interference to radio or television reception, which can be determined by turning the equipment off and on, the user is encouraged to try to correct the interference by one or more of the following measures

- Reorient or relocate the receiving antenna
- Increase the separation between the equipment and receiver
- Connect the equipment into an outlet on a circuit different from that to which the receiver is needed.
- Consult the dealer or an experienced radio/TV technician for help

TROUBLE SHOOTING

Problems	Reasons	Solutions
Running problems	The batteries inside the radio control are too weak.	Replace with new alkaline batteries inside the control unit.
	There is a weak or low reception for the radio control.	
	The rechargeable battery inside the vehicle is too weak.	Recharge the 9.6V Ni-Cd Battery Pack.
Operation problems	A small object obstructs movement of the tire or axle.	Use tweezers or a paper clip to remove obstruction.
	The vehicle was driven on the carpet and has fabric threads caught in the axle.	Playing on the carpet is not recommended.
Other	The vehicle does not respond to the radio control.	Try playing at another location.
	The radio control's frequency is disrupted by something around the environment.	Some other equipment using the same radio wave could disrupt the radio control. Either play in another location or turn off other equipment. If you are planning to race your vehicles with another friend, purchase vehicles with 2 different frequencies (49MHz and 27MHz) to avoid disruption

6"

CAUTIONS & WARNINGS

11

Do not recharge the Battery Pack if it is warm to the touch. Allow the Battery Pack to cool before recharging. Recharging a warm Battery Pack will shorten the life of the Pack.

Recharging batteries should be done by an adult.

Do not charge a damaged, leaking, hot or wet Battery Pack.

When not in use, remove Battery from its compartment.

When not in use, Transformer should be unplugged from the electrical outlet.

Under no circumstance should the Battery Pack be disposed of in fire. This may cause injury, leakage or explosion.

Please dispose of Ni-Cd Battery cells properly.

Do not break open or disassemble the Battery Pack.

Do not use the Battery Pack or Charger for any other reason than charging and running a Chrysler 300C SRT 8 Radio Control Vehicle.

Do not stall the motor during use.

WARNING:

Changes or modifications to this unit not expressly approved by the party responsible for compliance could void the user's authority to operate the equipment.

This device complies with part 15 of the FCC rules. Operation is subject to the following two conditions:

1. This device may not cause harmful interference, and
2. This device must accept any interference received, including interference that may cause undesired operation of the device.

ATTENTION PARENTS: The Battery Charger & Battery Pack need to be periodically examined for potential hazards and any potential hazardous parts be repaired or replaced.

ITEM NO. 3701

Chrysler®. Ram®. 300C® SRT8 and their trade dresses are trademarks of DaimlerChrysler Corporation and are used under license. ©DaimlerChrysler Corporation 2006.



Full-Function 9.6V Ni-Cd Radio Control Vehicle

OPERATING INSTRUCTIONS

***IMPORTANT: IF VEHICLE DOES NOT RESPOND PROPERLY, PLEASE REPLACE THE 9.6V NI-CD BATTERY PACK.**

CAUTION: THE MANUFACTURER IS NOT RESPONSIBLE FOR ANY RADIO OR TV INTERFERENCE CAUSED BY UNAUTHORIZED MODIFICATIONS TO THIS EQUIPMENT. SUCH MODIFICATIONS COULD VOID THE USER'S AUTHORITY TO OPERATE THE EQUIPMENT.



PLEASE DO NOT RETURN TO STORE
For more information or questions, please call Consumer Services:
1-877-FUN-TOYS
(1-877-386-8697)

Colors and decorations may vary.
Keep content details for future reference.



Manufactured & Distributed by
© 2006 Planet Toys Inc.
NY, NY 10010
All Rights Reserved
MADE IN CHINA

www.planettoysitd.com

CAUTION-ELECTRICALLY OPERATED PRODUCT:
NOT RECOMMENDED FOR CHILDREN UNDER 16 YEARS OF AGE. AS WITH ALL ELECTRIC PRODUCTS, PRECAUTIONS SHOULD BE OBSERVED DURING HANDLING AND USE TO PREVENT ELECTRIC SHOCK.
INPUT: 120V AC 60Hz/2.2VA, OUTPUT: 12V DC 500 MA.

05/10/05

8.5"