

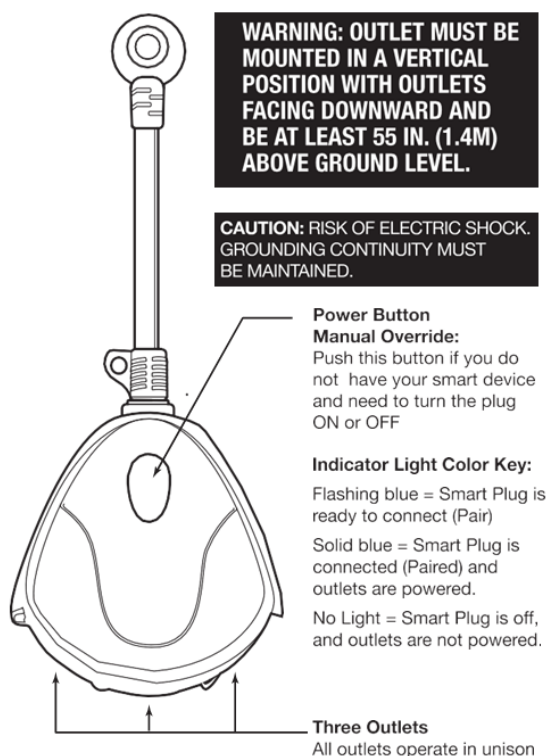
# IMPORTANT, RETAIN FOR FUTURE REFERENCE: READ CAREFULLY IMPORTANT SAFETY INSTRUCTIONS

When using electrical products, basic precautions should always be followed.

THIS OUTDOOR SMART PLUG IS A "GROUNDED" DEVICE

The male plug contains a ground pin and is only intended for use with a three-pronged grounded outlet.

DO NOT ATTACH A DEVICE THAT EXCEEDS THE UNIT RATINGS



This device complies with Innovation, Science and Economic Development Canada (ISED) licence-exempt RSS standard(s). Operation is subject to the following two conditions: (1) This device may not cause harmful interference, and (2) this device must accept any interference received, including interference that may cause undesired operation.

Cet appareil est conforme à la ou aux normes RSS exemptées de licence pour Innovation, Science et développement économique Canada. Le fonctionnement est soumis aux deux conditions suivantes: (1) ce dispositif ne peut pas causer d'interférence nocive, et (2) ce dispositif doit accepter toute interférence reçue, y compris les interférences pouvant causer un fonctionnement indésirable.

## TROUBLESHOOTING TIPS

If you are having difficulty connecting:

- Make sure the Wi-Fi network is a 2.4 GHz network. Outdoor Smart Plug will not connect to a 5 GHz network.
- Test your Wi-Fi network with other devices such as your phone to make sure it is operating properly.
- The Wi-Fi connection may not have good coverage during set up. Try moving the Outdoor Smart Plug closer to your Wi-Fi router.
- Your Wi-Fi network password is case sensitive, make sure you are entering correctly.

Devices plugged into your Outdoor Smart Plug must be ON in order to be controlled via the mobile app.

Please also check the App User Guide for more information

## Radiation Exposure Statement

This device complies with FCC radiation exposure limits set forth for an uncontrolled environment. This device should be installed and operated with a minimum distance of 20cm between the radiator and your body.

This device complies with Part 15 of the FCC Rules.

Operation is subject to the following two conditions:

- (1) This device may not cause harmful interference, and
- (2) this device must accept any interference received, including interference that may cause undesired operation.

NOTE: This equipment has been tested and found to comply with the limits for a Class B digital device, pursuant to part 15 of the FCC Rules.

These limits are designed to provide reasonable protection against harmful interference in a residential installation. This equipment generates, uses and can radiate radio frequency energy and, if not installed and used in accordance with the instructions, may cause harmful interference to radio communications. However, there is no guarantee that interference will not occur in a particular installation. If this equipment does cause harmful interference to radio or television reception, which can be determined by turning the equipment off and on, the user is encouraged to try to correct the interference by one or more of the following measures:

- Reorient or relocate the receiving antenna.
- Increase the separation between the equipment and receiver.
- Connect the equipment into an outlet on a circuit different from that to which the receiver is connected.
- Consult the dealer or an experienced radio/TV technician for help.

**LIMITED WARRANTY.** This product is warranted to be free from defects in workmanship and materials for up to 2 years from date of purchase. If the product fails within the warranty period, please contact Feit Electric at [info@feit.com](mailto:info@feit.com), visit [feit.com/contact-us](http://feit.com/contact-us) or call 1-866-326-BULB (2852) for instructions on replacement or refund. REPLACEMENT OR REFUND IS YOUR SOLE REMEDY. EXCEPT TO THE EXTENT PROHIBITED BY APPLICABLE LAW, ANY IMPLIED WARRANTIES ARE LIMITED IN DURATION TO THE DURATION OF THIS WARRANTY. LIABILITY FOR INCIDENTAL OR CONSEQUENTIAL DAMAGES IS HEREBY EXPRESSLY EXCLUDED. Some states and provinces do not allow the exclusion of incidental or consequential damages, so the above limitation or exclusion may not apply to you. This warranty gives you specific legal rights, and you may also have other rights which vary from state to state or province to province. Feit Electric Co. 4901 Gregg Road Pico Rivera, CA 90660 [www.feit.com](http://www.feit.com)

This equipment complies with ISED radiation exposure limits set forth for an uncontrolled environment. This equipment should be installed and operated with minimum distance 20cm between the radiator and your body. This transmitter must not be co-located or operating in conjunction with any other antenna or transmitter.

Cet équipement respecte les limites d'exposition aux rayonnements ionisants fixées pour un environnement non contrôlé. Cet équipement doit être installé et utilisé avec une distance minimale de 20cm entre le radiateur et votre corps. Cet émetteur ne doit pas être localisé ou fonctionner en conjonction avec une autre antenne ou un autre émetteur.

Any changes or modifications not expressly approved by the party responsible for compliance could void the user's authority to operate the equipment.

# Getting Started:

## 1 Download the Feit Electric app on your smart device



Feit Electric app



## 3 Turn on Bluetooth and open the Feit Electric app to complete the set up.

Tap **Add Device** or the + sign. The device name(s) will pop up on the Feit app. Tap on **Go to add**, then select the device to add.

You will be prompted to enter your Wi-Fi network name and password.

Multiple devices can be added using Simple pairing. Alternative set up options and help instructions are available in the Feit Electric app.

Be sure to connect to a 2.4 GHz Wi-Fi network that covers your installation location.

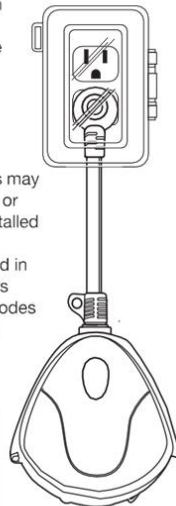


## 2 Plug in your Outdoor Smart Plug

Plug the Smart Plug into an outdoor rated GFCI receptacle with appropriate outdoor cover.

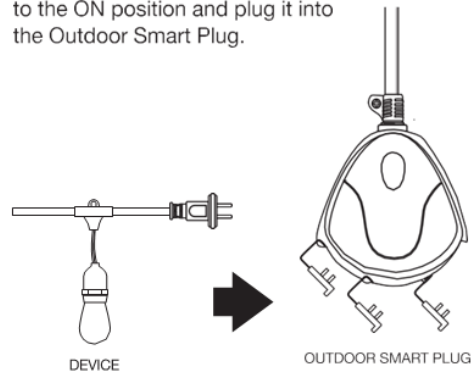
**WARNING:** These products may represent a possible shock or fire hazard if improperly installed or attached in any way. Products should be installed in accordance with the owners manual, current electrical codes and/or the current National Electric Code (NEC).

Indicator light must be rapidly blinking to connect. If not already blinking, press and hold the power button for five seconds.



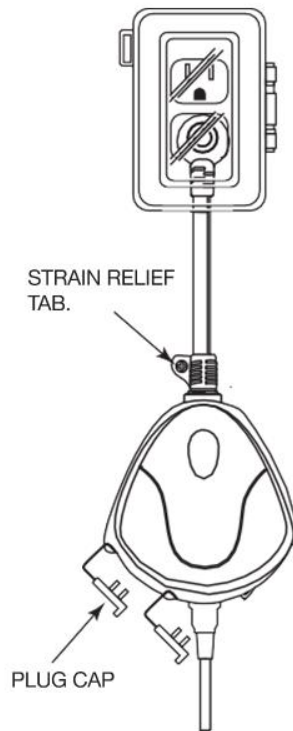
## 4 Plug your device into the Outdoor Smart Plug

Ensure your device is switched to the ON position and plug it into the Outdoor Smart Plug.

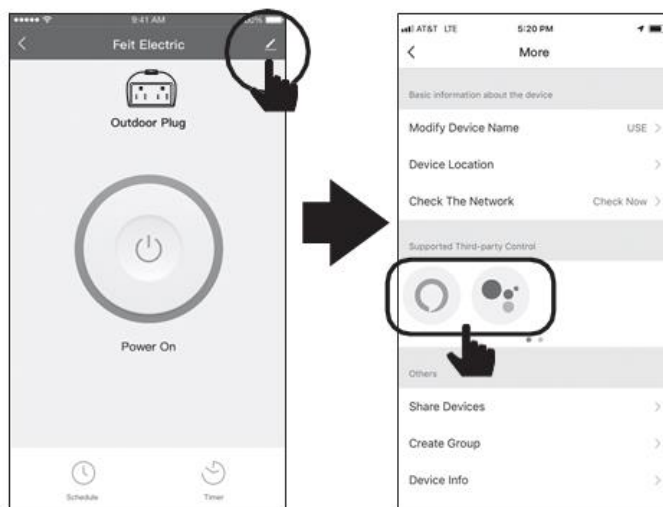


## FINISHING INSTALLATION

Once you're up and running, secure the Outdoor Smart Plug to wall by inserting a screw (not included) through the strain relief tab. Make sure to tightly cap the Outdoor Smart Plugs when not in use.



## (Optional) Connect to Google Assistant or Alexa using the in App guide



Tap **Pen** icon

Choose **Alexa**  
or **Google**

## Need Help?

Thank you for your purchase  
Questions, comments or feedback?  
We'd love to hear from you.

Visit [feit.com/help](https://feit.com/help) for support or connect with us:



# Triple Outlet Outdoor Smart Plug

## Quick Install Guide



Works with  
**Feit Electric app**



Only supports  
**2.4GHz Wi-Fi**  
networks

**Supplier's Declaration  
of Conformity:**

47 CFR § 2.1077

Compliance Information

**Responsible Party:**

Feit Electric Company  
4901 Gregg Road,  
Pico Rivera, CA 90660, USA  
562-463-2852

**Unique Identifier:**

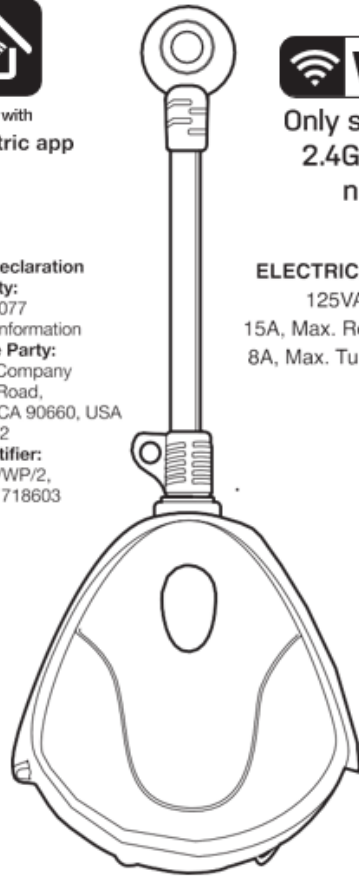
PLUG3/WIFI/WP/2,  
ITM. / ART. 1718603

**ELECTRICAL RATINGS:**

125VAC, 60Hz

15A, Max. Resistive: 1875W

8A, Max. Tungsten: 1000W



**FEIT ELECTRIC COMPANY**

Pico Rivera, CA, USA

1-866-326-2852 | FAX (562) 908-6360

[www.feit.com](http://www.feit.com)