

+ Copyright Notice

Thank you for purchasing a COWON product.

We do our utmost to deliver DIGITAL PRIDE to our customers.

This manual contains information on how to use the product and the precautions to take during use.

If you familiarize yourself with this manual, you will have a more enjoyable digital experience.

Introduction to website

+ The address of the product-related website is <http://www.COWON.com>.

+ You can download the latest information on our products and the most recent firmware updates from our website.

+ For first-time users, we provide an FAQ section and a user guide.

+ Become a member of the website by using the serial number on the back of the product to register the product. You will then be a registered member.

+ Once you become a registered member, you can use the one-to-one enquiry service to receive online customer advice. You can also receive information on new products and events by e-mail.

+ Copyright Notice

General

+ COWON is a registered trademark of COWON SYSTEMS, INC.

+ COWON SYSTEMS, INC. owns the copyright to this manual, and any unauthorized distribution of its contents, whether in part or in its entirety, is strictly prohibited.

+ COWON SYSTEMS, INC. complies with laws and regulations related to records, disks, videos and games. Users are also encouraged to comply with the relevant laws and regulations.

+ As soon as you purchase the product, visit the website (<http://www.COWON.com>), and become a registered member. You will benefit from various member services.

+ This manual is based on product specifications, and various exemplary texts, illustrations, pictures, detailed functions and H/W and S/W specifications contained herein can be altered without any prior notice by the copyright owner.

BBE information

- BBE Sound, Inc. owns the license to the BBE name and information as applied to this product, in compliance with USP4638258, 5510752 and 5736897.

- BBE and the BBE symbol are registered trademarks of BBE Sound Inc.

+ CONTENTS

Before you start!

- Precautions
- Package Components
- Names of Parts and Functions
- Power Connection and Charging
- Connecting and Disconnecting the PC
- Firmware Upgrade

Basic Use

- Buttons
- Main Screen
- Music
- Videos
- Radio
- Browser
 - Pictures
 - Documents
 - Browser
- Applications
 - Recorder
 - Flash
- Utilities
 - Calculator
 - Notepad
 - Typist
 - Comix
- Settings
 - JetEffect 3.0
 - Display
 - Time
 - Music
 - Video
 - Recording
 - Bluetooth
 - System

Additional

- Product Specification
- Converting Files Using COWON MediaCenter. JetAudio

Troubleshooting

Before you start!

+ Precaution

As these precautions are provided for the correct use of the product as well as user safety, be sure to familiarize yourself with them. The company will not be held responsible for any accident that may occur due to the failure to heed these precautions. The following information applies commonly to all products manufactured and produced by COWON SYSTEMS, INC.

- + Do not use this product for other purposes than those described in this manual.
- + Handle manual, product package materials, accessories, etc. with care to prevent cuts and injuries to your body.
- + Do not view videos, pictures and texts stored in your player while driving a vehicle for your safety. Operating other features of the player is also dangerous and may cause fatal accidents while driving.
- + The wearing of earphones while operating a vehicle, exercising, or walking may impair driving, mask or prevent recognition of emergency signals, alarms, announcements, the approach of vehicles and human speech. Doing so may also be unlawful depending on the region.
- + Do not use detergent or other chemicals on the product surface as it may cause fading. In this case, wipe the polluted area carefully with a soft cloth.
- + Do not expose the player in either cold weather of under **0 °C or hot temperature over 40 °C** such as inside automobiles. This may cause fatal damages to your player.
- + Do not expose the player to water or keep it in a damp or humid location for an extended period of time. If the player is damaged from moisture as described above, product failure is then classified as a user's misuse.
- + Take extra care not to apply external shock or pressure when using products with displays (LCD, AMOLED, or Touch Pad). Warranty may be voided if damage occurs due the aforementioned circumstances.

Before you start!

+ Precaution

- + Do not attempt to disassemble the player. Disassembly will void the warranty and the unit will be permanently disqualified from any warranty services.
- + Do not mix directions when connecting USB cables or AC adapters to your player or PC. Connecting USB cables incorrectly may damage your player or PC. Also, do not bend or press connection cables with heavy objects.
- + If you smell something burning or feel excessive heat while using the product, press the RESET button to stop operation and contact the place of purchase.
- + Touching the player with wet hands may cause damages and malfunctions. Handle the power plug only with dry hands (otherwise an electric shock may occur).
- + Listening at high volume (85 dB and above) for an extended period of time may harm your hearing.
- + For your protection, use the player in a well lit area where LCD screen will not overly strain your eyes.
- + Using the player in places with high occurrences of static electricity may cause malfunctions.
- + In case of using this device primarily for a storage device, it is recommended to back up all data before use. COWON SYSTEMS Inc. is not responsible for any data loss due to hardware failure.
- + All data stored in the player may become deleted when being serviced. Our Service Center does not back up files while repairing players. Please note that COWON SYSTEMS, Inc. is not responsible for any data loss from products entrusted to us for service.
- + Keep the player in cool and ventilated places, away from direct sunlight as it may cause deformation and damages to internal circuitry or LCD screen.
- + For your own safety, it is recommended that customers use the USB power adaptor and USB cable approved by COWON SYSTEMS, Inc.
- + If you are using a product that comes with an AC power adaptor, please use the genuine charger offered by COWON.

Before you start!

+ Precaution

- + When connecting to a PC, use only USB ports on the mother board or a USB Host card. Using an external USB hub may not guarantee proper operation (e.g. USB ports on a keyboard or an external USB hub).
- + When formatting the built-in memory, select the file system specified in the manual.
- + Be sure to disconnect the power supply to the PC and USB power adaptor during lightning or thunder storm, to prevent danger to the user or the risk of fire hazards.
- + Keep the player away from magnets and direct magnetic fields, as they can cause malfunctions.
- + Do not drop or expose the product to hard impact. This may result in malfunctions and/or unit failure, voiding the warranty.
- + If you find any abnormalities with the battery such as swelling, press the RESET button immediately to stop the operation and contact the place of purchase.
- + The price of the product may fluctuate due to unexpected commercial conditions. COWON SYSTEMS, Inc. accepts no liability to compensate for any price fluctuation.
- + <For MAC OS users>
'EJECT' procedure must be performed when removing the product from the PC.

Before you start!

+ Package Components

COWON X7

Earphones

Manual CD, Quick Guide

USB Cable

AV Cable (Composite, SPDIF)(Optional)

Line-in Cable(Optional)

* Actual package contents may differ from the above images.

Before you start!

+ Names of Parts and Functions

Power / Hold
Volume buttons
Earphone
USB/TV-Out Port
Home Button
Speaker
AC Adaptor Jack
MIC
Touchscreen
Strap Hole
Reset

* RESET will just disconnect the power and does not damage the product or delete any files stored on the device.

Before you start!

+ Charging

1. Connect between PC and USB/TV-Out port using USB cable.

The battery will be fully charged in about 3.5 hours.

2. Charging by COWON approved AC adapter :

The battery will be fully charged in about 3 hours.

3. + image will be displayed when power is turned on during charging.

- COWON X7 will be charged quicker through AC adaptor if the product is turned off. Display will remain blank in this case.
- When charging the player for the first time or the player has not been charged for an extended time, fully charge the battery before use.
- COWON X7 has a built-in Lithium Polymer battery. To prolong the life of the battery, it is recommended that you charge the device frequently, as opposed to fully discharging and then charging the device.
- When connected to a USB hub, the player may not charge properly. Please try connecting the player directly to a USB port on the PC.
- For safety during charging, use USB cable or AC adapter approved by COWON SYSTEMS, Inc.

Before you start!

+ Connecting and Disconnecting the PC

Drag

1. Use the USB cable to connect COWON X7 to the PC.
2. COWON X7 displays the following image if properly connected to the PC.
3. Also make sure to check My Computer or Windows Explorer to see if COWON X7 is properly connected to the PC.
4. Copy desired video, music, or other files to COWON X7.
5. When done, click the icon on the system tray to safely remove COWON X7 from the PC.
6. Click the popup message.
7. Safely remove the hardware and disconnect the USB cable.



- Disconnect the product after performing "Safely remove hardware" function.
- The following message may appear randomly, but it does not indicate that the product is malfunctioning. Please try again.
- If your operating system does not display the 'Safe To Remove Hardware' window, disconnect the player after all transfer operations are completed.
- Only simple file transfer operation is available for Linux and Mac OS.
- When you disconnect the player from Mac, make sure to perform "safely remove hardware" function to avoid fatal damage to your player.

Before you start!

+ Firmware Upgrade

Firmware is the software that is embedded within the hardware.

Upgrading it can enhance system stability and provide additional features.

Please be advised that Beta (unofficial) firmware versions may cause system malfunction.

How to upgrade the firmware

1. Download the latest firmware from the SUPPORT section of the website (<http://www.COWON.com>).

2. Use the USB cable to connect COWON X7 to the PC.

3. Unzip the downloaded firmware and copy it to the root folder of COWON X7.

4. Perform "Safely remove the hardware" function on your PC and disconnect the USB cable.

* COWON X7 firmware can only be updated if the power adaptor is connected.

5. When you turn on the product, the firmware upgrade process will start.

6. Successful firmware upgrade can be confirmed by turning on the product, the version of firmware will be shown at start up.

7. The current firmware version can be checked in Settings - System - Information.

- Fully charge the player before upgrading the firmware.

- Do not turn the player off before the firmware update has been completed. It may damage the product, and will void any warranty.

- Back up any important data before the firmware upgrade as any data stored on the device may be deleted during the process. COWON accepts no liability for any loss of data.

Basic Use

+ Buttons

1. Press and Hold: Power On/Off

2. Briefly Press: Hold On/Off

- Touchscreen and buttons are disabled in Hold mode.
- Setting the product in Hold can prevent unwanted operations.

3. Briefly Press Twice: Display Off

- Press the button once more to switch back to Display On.

Basic Use
+ main screen

Play Status Indicator

Earphone/Speaker Usage Indicator

Battery Indicator

Volume

Basic Use

+ music

1	PLAY / PAUSE	Play/pause the music file.	Skip Interval and Scan Speed can be set from [SETTINGS]–[MUSIC].	
2	PREV	Select the previous track or rewind.		
3	NEXT	Select the next track or fast forward.		
4	OPEN	Display the list of songs in the current music folder.		
5	A–B	Set a segment to repeat during the playback.		
6	FAV.	Add a file to Favorites during the playback.		
7	B.MARK	Add Bookmarks during the playback. When a bookmark is added at a specific point while a piece of music is being played, the music can be started at the specified position. * Up to 256 bookmarks can be added.		
8	PRESET	Set JetEffect 3.0 – Desired sound presets can be selected. – In the User mode, it can be customized by using various parameters of JetEffect. – If the value of each JetEffect parameter is extremely large, a little background noise can occur. – Please see p.xx or BBE introduction at www.COWON.com for further information on JetEffect.		
9	MODE	Repeat	ON	Tracks in the designated boundary will be played repeatedly.
			OFF	Tracks in the designated boundary will be played only once.
		Shuffle	ON	Music files will be played in random order.
			OFF	Music files will be played in normal order shown in browser.
		Boundary	ALL	All music files in COWON X7 will be played.
			1	Only currently playing music file will be played.
			FOLDER	Only files within the currently playing folder will be played. * Sub folders will be included automatically.
		Speed	Playback speed can be set (50%~150%).	
Pitch Correction	Compensate for the change of intonation of an audio signal when adjusting the playback speed in Music mode.			

* COWON X7's basic album art image is displayed for a file without an album art image.

Basic Use

+ videos

1	OPEN	Display the list of video files in the current video folder.			
2	REW	Select the previous file or rewind.			
3	PLAY / PAUSE	Play or pause the video file.			
4	FF	Select the next file or fast forward.			
5	A-B	Set the playback boundary to repeat.			
6	THUMB	Displays the preview thumbnails of currently playing video.			
7	MORE	PRESET	Set JetEffect 3.0 (See p.xx)		
		DISPLAY	BRIGHTNESS	1~6	
			SCREEN	16:9 / 4:3 / Original Size / Original Ratio	
		SUBTITLE	SUBTITLE	Set subtitle On/Off.	
			LANGUAGE	Select Subtitle language 1/ 2/ All.	
			ADJUST	Adjust sync between the subtitle and video file by 0.5 sec.	
			SUBTITLE POSITION	Set the subtitle height.	
			COLOR	Select the subtitle color.	
			FONT SIZE	Set the subtitle size.	
			SPEED	SPEED	Set the playback speed. * It can be set within the range between 50%~150%.
		PITCH CORRECTION		Compensate for the change of intonation of an audio signal when adjusting the playback speed in Music mode.	
		PLAYBACK	REPEAT	Turn Repeat On / Off.	
			BOUNDARY	Set playback boundary by ALL / 1 / FOLDER.	
		CAPTURE	Capture and save video screen images. * The captured screen images are saved as jpg files and stored in [Browser]-[Recordings]-[Video Capture] folder.		
		TV OUT	Turn TV-Out On/Off. * TV-out cable is optional.		
		BOOKMARK	Add Bookmarks during the playback. When a bookmark is added at a specific position of video during the playback, the video can be started at the specified position. * Up to 256 bookmarks can be added.		

Basic Use

+ radio

1	MANUAL	CHANNEL	Turn preset mode On / Off
		SCAN	Search the receivable FM frequency and automatically register them in Preset.
		REC	Record the radio signal being received.
2	PRESET	SAVE	Register the channel you are listening as a preset.
		DELETE	Delete the channel you are listening from the presets.
3	SETTING	Sound	Select Stereo/Mono.
		Region	Select a country.

* Frequency gap is set to 0.1MHz or 0.05MHz depending on the selected country.

Basic Use

+ browser

1	Pictures	ZOOM	Zoom in/out the current image.	
		ROTATE	Rotate images by 90 degrees (clockwise).	
		WALLPAPER	Set the current image as wallpaper.	
		SLIDESHOW	Slide show the image files in the specified folder.	
		SETTINGS	Slideshow	Set the slide show type (Slide/Fade In).
			Shuffle	Set the slide show as shuffle mode.
			Speed	Set the slide show rate (5~20 sec).
2	Documents	OPEN	Display the list of text files in the current folder.	
		BOOKMARKS	Add a bookmark at the current position.	
		ON / OFF	Turn auto scroll On / Off.	
		SETTINGS	Text Color	Set the text color.
			Background Color	Set the background color.
			Font Size	Set the font size.
			Scrolling Speeds	Set the auto scroll interval.
3	Browser	UP	Move to the upper list.	
		TOP	Move to the root folder.	
		DEL	Deleted the selected Favorite file.	
		FAV	Add the selected file to Favorite.	
		SEARCH	Aa A /a	The Case Sensitive/Insensitive option can be used when searching in English.
			Current / Sub folders	Search files in the current folder / files including subfolders.

Basic Use
+ applications

1	Recorder	RECORDING	RECORD	Start recording.
			STOP	Stop recording.
		PLAYING	PLAY	Play a recorded file.
			STOP	Stop the playback.
		SETTING	Input	Line-in / MIC
			Quality	32k / 64k / 80k / 96k / 128k / 256k
			Volume	Auto / 1 / 2 / 3 / 4 / 5
2	Flash	Execute Flash files (extension: swf) stored in COWON X7. A simple Flash game or animation can be played. The button allocation is applicable only when using flash files created in compliance with COWON X7 buttons.		

Basic Use

+ utilities

1	Calculator	Touch based calculator.
2	Notepad	Write a simple memo or draw a picture. Various writing tool effects such as a highlighter and background screens are supported.
3	Typist	Create memos using the keyboard.
4	Comix	Comics images files can be viewed.
5	Stopwatch	Stop watch and countdown features can be used.

Basic Use
+ settings

1	JetEffect 3.0	Select your sound effect from 39 JetEffect presets.	Normal / BBE / BBE VIVA / BBE VIVA 2 / BBE Mach3Bass / BBE MP / BBE Headphone / BBE Headphone 2 / BBE Headphone 3 / Rock / Jazz / Classic / Ballad / Pop / Club / Funk / Hip Hop / Techno / Blues / Metal / Dance / Rap / Wide / X-Bass / Hall / Vocal / Maestro / Feel the Wind / Mild Shore / Crystal Clear / Reverb Room / Reverb Club / Reverb Stage / Reverb Hall / Reverb Stadium / User 1 / User 2 / User 3 / User 4
		4 user-defined presets with equalizer, BBE+, Stereo Enhance, Reverb, etc.	User 1 / User 2 / User 3 / User 4
		BBE+ is the most sophisticated and powerful sound technology available for MP3 and PMP devices. Optimized for headphone playback of compressed audio material, BBE+ brings listeners closer to the natural presence and impact of a “live performance” than ever before.	EQ Filter: Each band of the equalizer can be adjusted in detail.. BBE: Sound effect that refines the sound quality. Mach3Bass: Provides deeper, tighter, and more musically accurate bass frequency. 3D Surround: Provides the three-dimensional surround sound effect. MP Enhance: Restores and enhances the harmonics lost through compression.. Stereo Enhance: Enriches the stereo sound. Reverb: Maximizes the natural and live presence of the sound.
		* You may hear distortion or noise when using extreme settings of JetEffect 3.0. For more information about JetEffect 3.0, visit us at www.COWON.com	
	Display	Language	Select a preferred language for COWON X7.
2		Font	Set a preferred font type for COWON X7. A TTF font file can be used as a user font by changing the file name into a USER.TTF file and copying in the SYSTEM folder. When the user font is applied, device operation may be a little delayed or characters may be truncated. Characters may be destroyed where multi-language data is not available for the user font.
		Playback time	Set playback time as Elapsed / Remaining.
		Wallpaper	Set wallpaper as basic / designated.
		Auto display off	Set a time to hold display on. The display will be automatically turned off if no action is taken during the specified time.
		Brightness	Set the display brightness.

		TV-Out	Select TV-out standard (NTSC/PAL).	
3	Time	TIME & DATE	Set the current time and date. Please set the correct time to make the best use of the Alarm and Scheduled Recording functions.	
		ALARM	Repeat	Once / Daily
			Duration	Select from Always on /20 min /40 min /60 min /80 min /100 min /120 min.
			Mode	Select from Off /Music alarm /FM alarm /FM recording.
		TIMER	Sleep Timer	Select from Off / 10 min / 20 min / 30 min / 40 min / 50 min / 60 min / 70 min / 80 min / 90 min / 100 min / 110 min / 120 min
			Auto Off	Select from Off / 1 min / 2 min / 3 min / 4 min / 5 min / 10 min / 20 min / 30 min
4	Music	SKIP INTERVAL	Track / 2 sec / 3 sec / 4 sec / 5 sec / 10 sec / 20 sec / 30 sec	
		SEEK INTERVAL	3 sec / 5 sec / 10 sec / 20 sec / 30 sec	
		RESUME	On / Off	
		PLAY SPEED	50%~150%	
		PITCH CORRECTION	On / Off	
		FADE IN	Off / 1 sec / 2 sec / 3 sec / 4 sec / 5 sec	
		LYRICS	On / Off	
5	Video	SKIP INTERVAL	1~5	
		RESUME	On / Off	
		PLAY SPEED	50%~150%	
		PITCH CORRECTION	On / Off	
		SUBTITLE	On / Off	
		SUBTITLE LANGUAGE	All / 1 / 2	
		REGION	Korea / Band-III / China	
6	Recording	LINE-IN QUALITY	32k / 64k / 80k / 96k / 128k / 256k	
		MIC QUALITY	32k / 64k / 80k / 96k / 128k / 256k	
		FM RADIO QUALITY	32k / 64k / 80k / 96k / 128k / 256k	
		LINE-IN VOLUME	1~5	
		MIC VOLUME	Auto / 1	
7	Bluetooth	OFF	Turn On/Off the Bluetooth mode.	
		SCAN	Search for Bluetooth headsets in COWON X7's proximity. Be sure to have the Bluetooth headset in pairing mode. Pair the COWON X7 with the discovered Bluetooth headset to use. Please refer to headset's manual for its pairing instructions.	
		PAIRING	Enter the PIN number for pairing with the device. After pairing, you can select a specified service item.	
		DEL	Delete the selected Bluetooth headset. Deleted headset must be re-searched and re-paired in order to use it again with COWON X7.	
8	System	HOLD MODE	Hold all / hold touchscreen only	
		SLEEP MODE	On / Off	
		BEEP	Off / Water drop / Balloon / Bell 1 / Bell 2	
		AUDIL L/R	-10 ~ +10 / Off	
		SPEAKER	On / Off / Auto	

		DB UPDATE	Update the file list of the device.
		LOAD DEFAULTS	Restore all settings to the factory default.
		INFORMATION	Version: Current firmware version. Total space: Total capacity of internal memory. Free space: Remaining memory of internal memory.

**Additional
+ Product Specification**

Capacity	Flash Memory	4GB
	HDD	80GB / 120GB / 160GB (FAT32 file system) 1)
Display	16,000,000 colors, Resistive Touchscreen, 4.3" TFT LCD (480X272)	
Size and Weight	78.5(W) x 127.0(H) x 15.7(T) mm / 213g	
Button	Power/Hold, Menu, VOL+, VOL -	
Color	Black, White	
Power	Battery	Built-in rechargeable lithium polymer battery
	Playback time	Music Max 30 hours / Video Max 9 hours 2)
	Battery charging	AC Adapter : 3.5 hours(5V/3A or higher)
System Requirement	CPU	Pentium III 500MHz or higher
	OS	Windows 7 / Vista / XP / 2000 / ME : Support all functions MAC OS 10.x / Linux v2.4 or higher : File transfer only
	USB Port	2.0 High Speed
ETC	Built-in speaker	

**Additional
+ Product Specification**

Audio	Frequency Range	20Hz~20,000Hz	
	Max Output	Stereo, 29mW + 29mW (16Ω earphones)	
	S/N Ratio	95dB	
	File Format	MP3, WMA, FLAC, OGG, APE, WAV	
	Audio Codec	MP3 : MPEG 1/2/2.5 Layer 3, ~320kbps, ~48kHz, mono/stereo WMA : ~320kbps, ~48kHz, mono/stereo OGG : ~Q10, ~44.1kHz, mono/stereo FLAC : Compression Level 0 ~ 8, ~44.1kHz, mono/stereo WAV : ~48kHz, 16bit, mono/stereo APE : Fast, Normal, High, 16bit, v3.97 ~ 3.99	
	Meta Tag	ID3 V1, ID3 V2.2 / V2.3 / V2.4, Vorbis Comment	
	Playback speed	50% ~ 150%, Pitch correction	
	JetEffect 3.0	39 Presets (35 Presets + 4 User Presets)	
		BBE+	BBE, Mach3Bass, 3D Surround, MP Enhance
		Special Effect	Stereo Enhance, Reverb
		EQ	5 Band Equalizer (EQ Filter)
	Lyrics	LDB 1.0, 2.0	
Video	File format	AVI, WMV, ASF	
	Video codec	DivX 3/4/5, Xvid SP/ASP, WMV 7/8/9 (Some files may not be played properly depending on the video resolution, frame, bit rate and encoding option).	
	Video resolution	480 x 272, 30 fps	
	Audio codec	MP3, WMA	
	Playback speed	50% ~ 150%, Pitch correction	
	Subtitle	SMI	

**Additional
+ Product Specification**

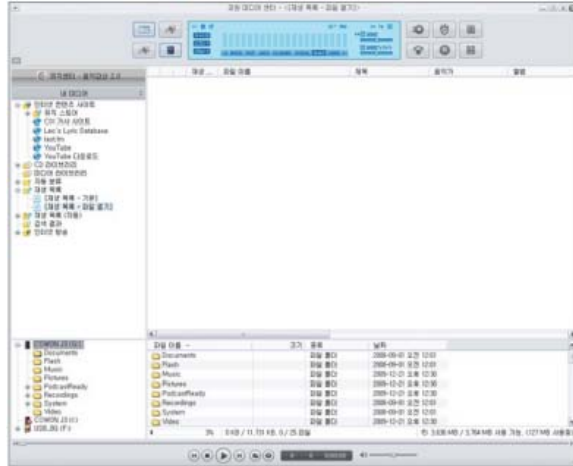
AV Out	Method	Video : Composite Audio : S/PDIF, Stereo
	Format	NTSC / PAL
Photo	JPG, No limits.(Progressive format: less than 1M pixel)	
Document Viewer	TXT, No limits.(Exception : UTF-8 Unicode (big endian))	
FM Radio	Frequency Range	87.5~108 MHz (KR, US, EU), 76~108 MHz (JP)
Recording	Mic / Line-in / FM Radio	
Bluetooth	Bluetooth 2.0 Stereo Headset, A2DP / AVRCP 3)	

- 1) The storage capacity may be different from the actual capacity due to the space of the system used for the product.
- 2) The play time based on the test environment of the company may be different from the actual play time.
- 3) FM radio does not support Bluetooth. Uncertified Bluetooth headsets, receivers, etc. may not be compatible with the product.

Additional

+ Converting Video Files Using COWON MediaCenter - JetAudio

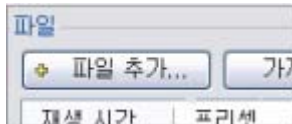
1. Install and run the COWON MediaCenter - JetAudio.



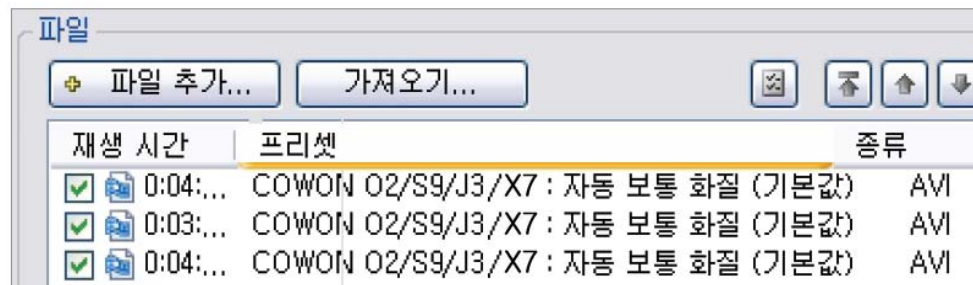
2. Click “Convert” button on the top right hand side.
From drop-down menu, select “Convert Video”.



3. From the Convert Video window, click “Add File” to select the files to convert.



4. Check the selected video files in the list.



Additional
+ Converting Video Files Using COWON MediaCenter - JetAudio

5. After checking the target folder location to save the converted files and other settings, click on “Start” to start the video conversion process.



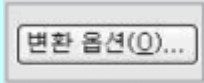
- Movie files that do not play properly on the product may need to be converted by COWON MediaCenter - JetAudio. Before doing so, please make sure that the movie files play properly on the PC first.

- Files already damaged before conversion may not work on COWON device even if the conversion process is successful.

- Conversion time may vary depending on PC performance, source file size and codec types.

- “Preview” allows checking the converted video before starting conversion.

- To convert a file with subtitles or to change settings on subtitles, click on “Convert Options”.



- SMI files for subtitles must have the same file name as its video file.
(e.g. COWON.avi / COWON.smi)

+ Troubleshooting

+ I am still confused even after reading the manual.

COWON website(www.COWON.com) provides support for users of COWON products with FAQ (Frequently Asked Questions). Users are strongly encouraged to check out the website for further information regarding product usages and firmware upgrades. For individual inquiries, please contact us on-line as we will try to help you as best as we can.

+ I would like to set the device as factory default.

There are two choices when setting the device as factory default.

1. Connect the device to PC and format as FAT32 file system. Note that this procedure will erase the data in the device.
2. Delete the PARAM.CFG file in the System folder.

+ The player does not turn on.

If the battery is completely discharged, charge the battery before you start the player. The charging time may vary depending on the battery's discharge status. If the player does not work at all, press the RESET button on the rear side. For your information, RESET will just disconnect the power and does not damage the product or delete any files stored on the device.

+ The touchscreen/touch pad/buttons do not work properly.

Check if the power switch is positioned to HOLD.

+ I can't hear any sound.

Check if the volume is set to "0". Check if there is any file available in the player. If there is no file in the player, you will not hear any sound. Please note that corrupted files will result in a noise or discontinued playback. Make sure

the earphones are connected properly. Impurities in the earphone jack can cause a noise.

+ Files that I have stored do not appear in the list.

Each mode shows you a list of playable files only. To view all files that you have stored, select the Browser mode. Please note that System folder will not appear in the Browser.

+ Album image is not displayed in Music Mode.

In order to display album image, the image has to be stored in the ID3 tag of the music file. You can edit the ID3 tags using COWON MediaCenter - JetAudio. A JPG image file with the same name as the relevant music file should be stored in the player. Alternatively, a JPG image file named "cover.jpg" can be stored in the relevant folder.

+ Video won't play.

Movie files that do not play properly on the product may need to be converted by COWON MediaCenter - JetAudio.

+ FM Radio does not work.

The product's earphones work as the FM Radio antenna. Straightening the earphone cable will result in better radio reception. FM Radio reception may be poor at locations where FM Radio transmissions are shielded. If FM Radio does not work where reception should be possible, please contact our service center.

+ There is too much noise in my recordings.

The product uses ultra-small internal microphone, so it may be more susceptible to noise during recordings. The microphone should not be covered with anything during recording.

+ Characters on the display are corrupted.

Set your preferred language again in Settings > Display > Language. If the problem persists, set the current font to the system font. COWON products are developed based on the Korean Windows OS, and this may cause corruption of some special fonts or languages on the display.

+ Computer cannot recognize the player when connected.

Try the RESET button in the back. If you experience a frequent disconnection or unstable connectivity, connect the player directly to the USB port of the PC, rather than a separate USB hub. As COWON products use the USB connection for the main power system, unstable power supply can cause a connection failure.

+ Memory capacity of the player is different or smaller than specified.

The memory capacity indicated by Windows may be different from that indicated by the memory manufacturer. The actual capacity will be reduced from the original size because some space of the memory should be used as the system area for normal operation.

+ The player does not play properly when memory is full.

For the player to function properly, it requires at least 5 MB of space for saving settings and other system files.
charging with a genuine COWON adapter.

+ FCC Information to User

This equipment has been tested and found to comply with the limits for a Class B digital device, pursuant to Part 15 of the FCC Rules. These limits are designed to provide reasonable protection against harmful interference in a residential installation. This equipment generates, uses and can radiate radio frequency energy and, if not installed and used in accordance with the instructions, may cause harmful interference to radio communications. However, there is no guarantee that interference will not occur in a particular installation. If this equipment does cause harmful interference to radio or television reception, which can be determined by turning the equipment off and on, the user is encouraged to try to correct the interference by one of the following measures:

- Reorient or relocate the receiving antenna.
- Increase the separation between the equipment and receiver.
- Connect the equipment into an outlet on a circuit different from that to which the receiver is connected.
- Consult the dealer or an experienced radio/TV technician for help.

Caution

Modifications not expressly approved by the party responsible for compliance could void the user's authority to operate the equipment.

FCC Compliance Information:

This device complies with Part 15 of the FCC Rules. Operation is subject to the following two conditions: (1) This device may not cause harmful interference, and (2) this device must accept any interference received, including interference that may cause undesired operation.

IMPORTANT NOTE:

FCC RF Radiation Exposure Statement:

This equipment complies with FCC RF radiation exposure limits set forth for an uncontrolled environment. This equipment should be installed and operated with a minimum distance of 20 centimeters between the radiator and your body. This transmitter must not be co-located or operating in conjunction with any other antenna or transmitter.

+ Battery Replacement

The rechargeable batteries have limited number of charge cycles, and it will require a replacement as capacity to hold power will eventually diminish.

The rechargeable batteries in COWON products should be replaced only by official COWON service centers. Please contact batteryreplace@cowon.com for more information on official COWON service centers.

+ Product Disposal

COWON products contain built-in rechargeable batteries, and must be separately disposed from household waste. Disposing the products with regular waste may cause pollution of environment due to the waste batteries inside. Contact your local authorities for specified locations/guidance of E-waste and waste batteries, and dispose them in compliance with local regulation/guidance.